

Dominion

Block E
The Kurne
2 bed apartment

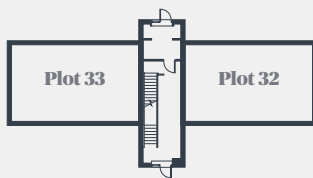
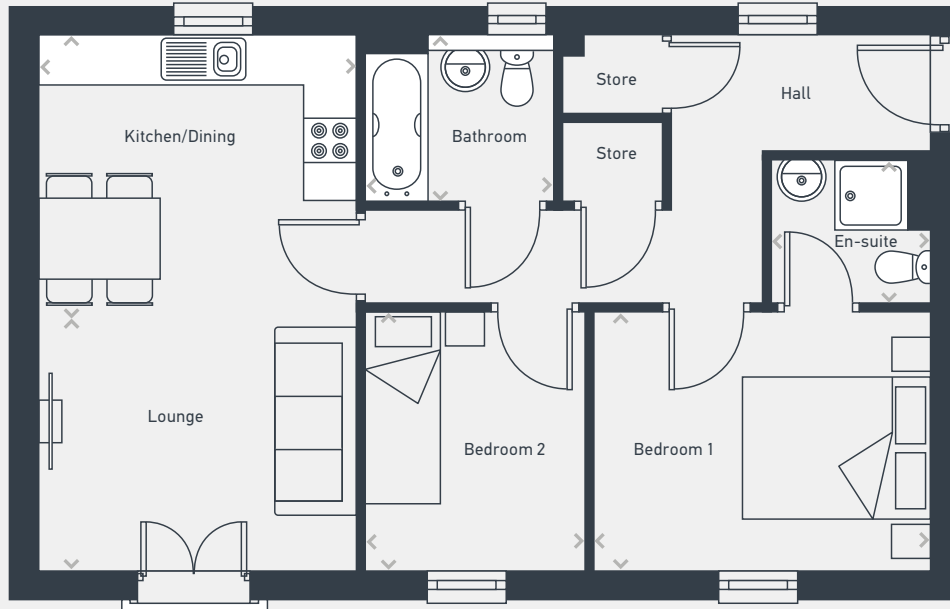


Dominion

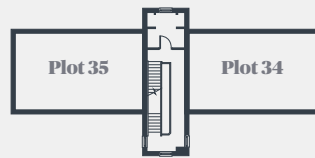
Block E The Kurne 2 bed apartment

Plots 32, 34, 36 and 38 are handed

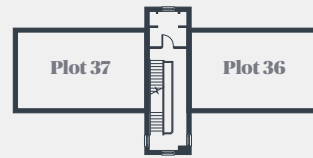
64.06sq m / 690 sq ft



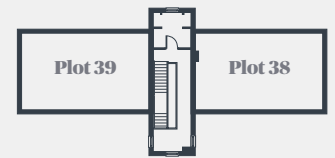
GROUND FLOOR



FIRST FLOOR



SECOND FLOOR



THIRD FLOOR

DIMENSIONS	m	ft
Kitchen/Dining	3.68m x 3.16m	12'1" x 10'4"
Lounge	3.78m x 3.14m	12'5" x 10'4"

DIMENSIONS	m	ft
Bedroom 1	4.87m x 3.64m	16'0" x 11'11"
Bedroom 2	3.14m x 2.68m	10'4" x 8'10"
Bathroom	2.15m x 1.91m	7'1" x 6'3"
En-suite	1.90m x 1.70m	6'3" x 5'7"



07812 623 454 | northernnewhomes@lslnewhomes.co.uk

Dominion, Woodfield Way, Doncaster DN4 8SJ

Please note: Plots at Dominion comprise a range of homes and external finishes may vary. Purchasers should check the detail of specific plots with our selling agents. All layouts and floor plans, configurations, maps and information are intended for guidance only and accuracy of this information cannot be relied upon by prospective purchasers who must make their own enquiries to satisfy themselves by inspection or otherwise as to the correct detail. Sizes and dimensions approximate and subject to change.

Dominion

Block F
The Kurne
2 bed apartment

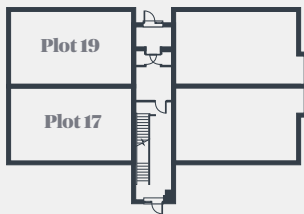
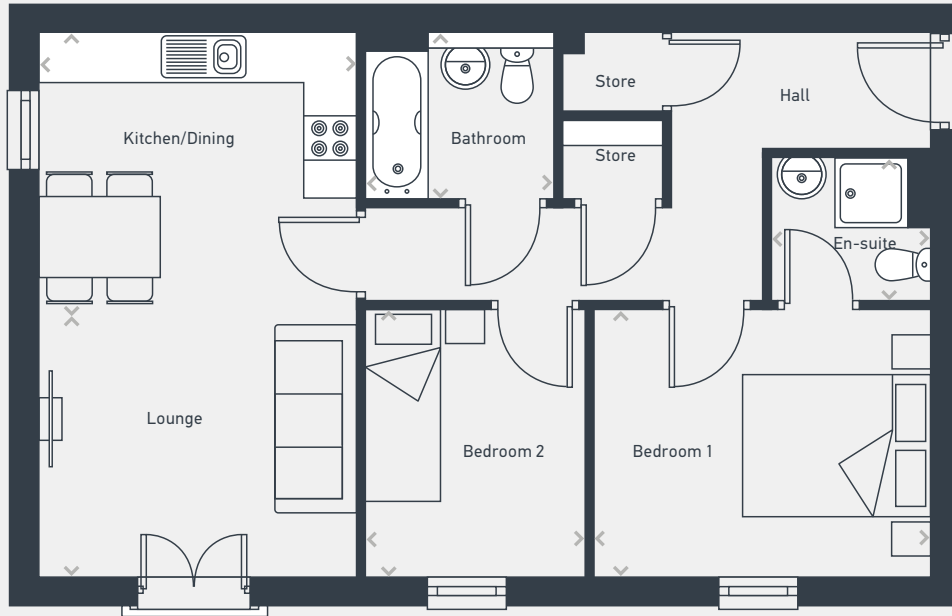


Dominion

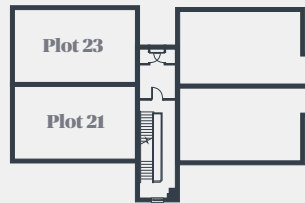
Plots 19, 23, 27 and 31 are handed

Block F The Kurne 2 bed apartment

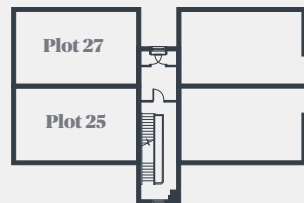
64.06sq m / 690 sq ft



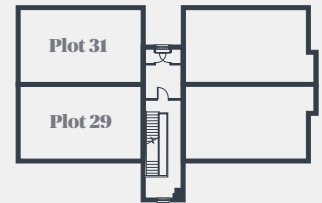
GROUND FLOOR



FIRST FLOOR



SECOND FLOOR



THIRD FLOOR

DIMENSIONS	m	ft
Kitchen/Dining	3.68m x 3.16m	12'1" x 10'4"
Lounge	3.78m x 3.14m	12'5" x 10'4"

DIMENSIONS	m	ft
Bedroom 1	4.87m x 3.64m	16'0" x 11'11"
Bedroom 2	3.14m x 2.68m	10'4" x 8'10"
Bathroom	2.15m x 1.91m	7'1" x 6'3"
En-suite	1.90m x 1.70m	6'3" x 5'7"



07812 623 454 | northernnewhomes@lslnewhomes.co.uk

Dominion, Woodfield Way, Doncaster DN4 8SJ

Please note: Plots at Dominion comprise a range of homes and external finishes may vary. Purchasers should check the detail of specific plots with our selling agents. All layouts and floor plans, configurations, maps and information are intended for guidance only and accuracy of this information cannot be relied upon by prospective purchasers who must make their own enquiries to satisfy themselves by inspection or otherwise as to the correct detail. Sizes and dimensions approximate and subject to change.

Dominion

Block F
The Kurne Special
2 bed apartment

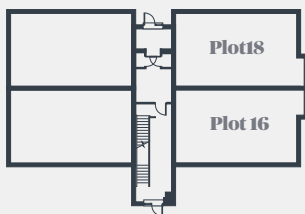
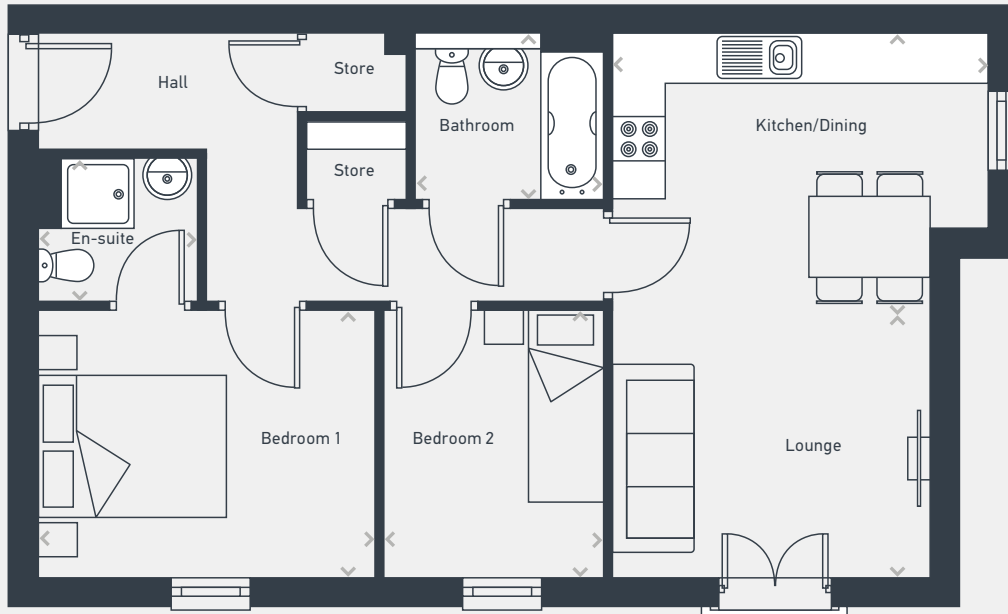


Dominion

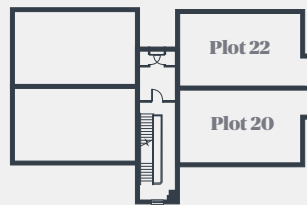
Block F The Kurne Special 2 bed apartment

Plots 18, 22, 26 and 30 are handed

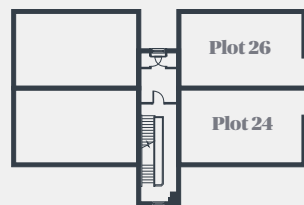
66.43sq m / 715 sq ft



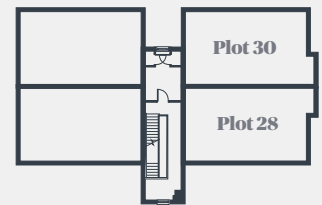
GROUND FLOOR



FIRST FLOOR



SECOND FLOOR



THIRD FLOOR

DIMENSIONS	m	ft
Kitchen/Dining	4.35m x 3.16m	14'3" x 10'4"
Lounge	3.78m x 3.14m	12'5" x 10'4"

DIMENSIONS	m	ft
Bedroom 1	4.87m x 3.64m	16'0" x 11'11"
Bedroom 2	3.14m x 2.68m	10'4" x 8'10"
Bathroom	2.15m x 1.91m	7'1" x 6'3"
En-suite	1.90m x 1.70m	6'3" x 5'7"



07812 623 454 | northernnewhomes@lslnewhomes.co.uk

Dominion, Woodfield Way, Doncaster DN4 8SJ

Please note: Plots at Dominion comprise a range of homes and external finishes may vary. Purchasers should check the detail of specific plots with our selling agents. All layouts and floor plans, configurations, maps and information are intended for guidance only and accuracy of this information cannot be relied upon by prospective purchasers who must make their own enquiries to satisfy themselves by inspection or otherwise as to the correct detail. Sizes and dimensions approximate and subject to change.

Dominion

Block K
The Kurne
2 bed apartment

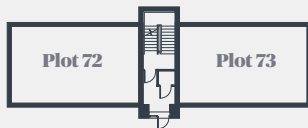
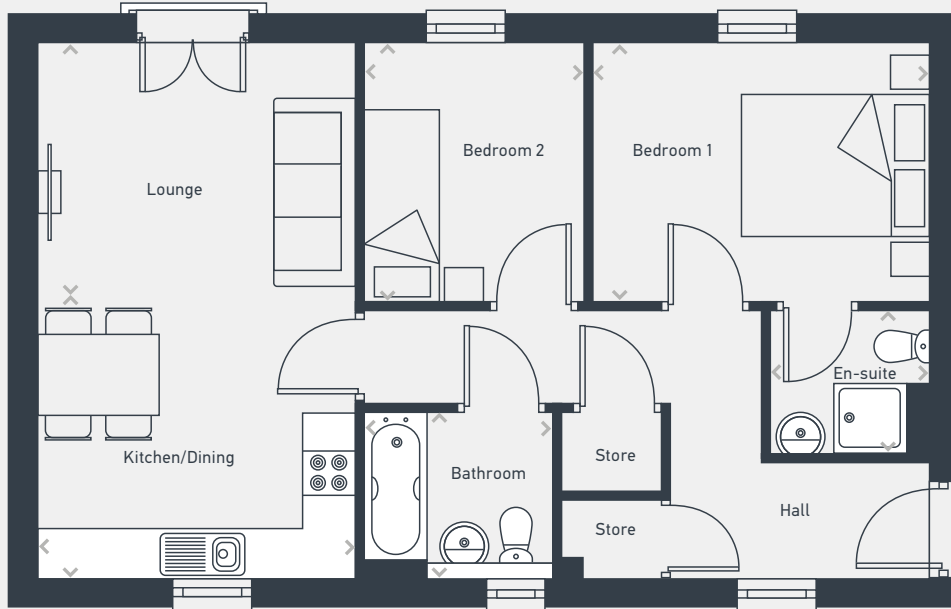


Dominion

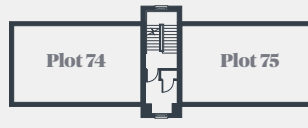
Plots 73, 75 and 77 are handed

Block K The Kurne 2 bed apartment

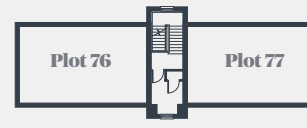
64.06sq m / 690 sq ft



GROUND FLOOR



FIRST FLOOR



SECOND FLOOR

DIMENSIONS	m	ft
Kitchen/Dining	3.68m x 3.16m	12'1" x 10'4"
Lounge	3.78m x 3.14m	12'5" x 10'4"

DIMENSIONS	m	ft
Bedroom 1	4.87m x 3.64m	16'0" x 11'11"
Bedroom 2	3.14m x 2.68m	10'4" x 8'10"
Bathroom	2.15m x 1.91m	7'1" x 6'3"
En-suite	1.90m x 1.70m	6'3" x 5'7"



07812 623 454 | northernnewhomes@lslnewhomes.co.uk

Dominion, Woodfield Way, Doncaster DN4 8SJ

Please note: Plots at Dominion comprise a range of homes and external finishes may vary. Purchasers should check the detail of specific plots with our selling agents. All layouts and floor plans, configurations, maps and information are intended for guidance only and accuracy of this information cannot be relied upon by prospective purchasers who must make their own enquiries to satisfy themselves by inspection or otherwise as to the correct detail. Sizes and dimensions are approximate and subject to change.