



Persona Homes

by Home Group

WOOLNER BROOK

WIGTON

Florence

The two-bedroom Florence is the perfect choice for stepping onto the property ladder and comes with more than expected.

Downstairs features a separate modern kitchen and a lovely open living/dining area. Upstairs there are two generous bedrooms and ample storage.



Contact us:

T: 0800 030 8888

E: contactus@yourpersonahome.com

W: yourpersonahome.com

Proctor's Square, Wigton, CA7 9EG

Ground floor

Kitchen 3.86m x 3.40m

Living/Dining 4.52m x 3.51m



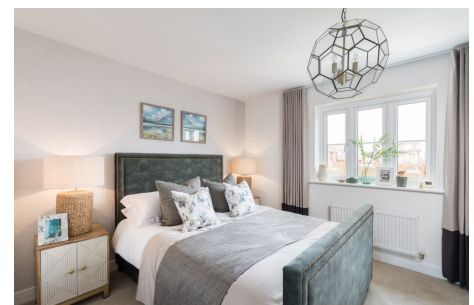
First floor

Master bedroom 4.52m x 2.56m

Bedroom 2 4.52m x 2.49m

Bathroom 2.23m x 2.20m

Total Area 67 sq m



Any floor plans are a general outline of the layout of the property for guidance only. All measurements are approximate and may vary and any intending purchasers should not rely on them as statements of fact or representations of fact but must satisfy themselves by inspection or otherwise as to their accuracy. Dimensions shown are not intended to be relied upon for installation of appliances or items of furniture or otherwise. Cgi's and images are for illustrative purposes only and do not constitute nor constitute part of an offer or contract.