

# THE SANKEY WHITEFIELD BROOK



## KEY FEATURES:

- Set over three storeys
- Three double bedrooms
- En-suite from master bedroom
- Spacious kitchen/diner
- Integrated kitchen appliances
- Separate lounge



### The Sankey

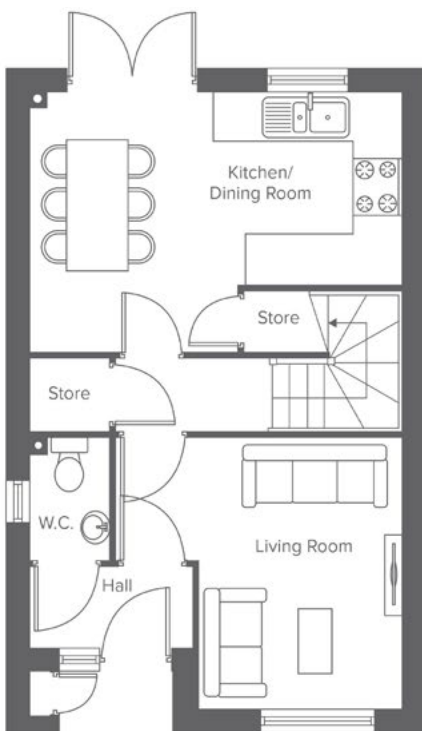
Shared Ownership plots

10-15, 18-20, 48-50,  
251-254, 256, 257, 259-  
261

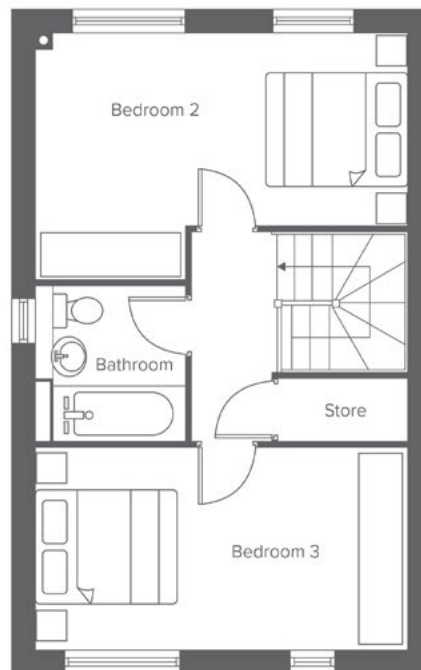
WHITEFIELD DRIVE, KIRKBY, LIVERPOOL L32 4TD

A range of bespoke two, three and four-bedroom homes.

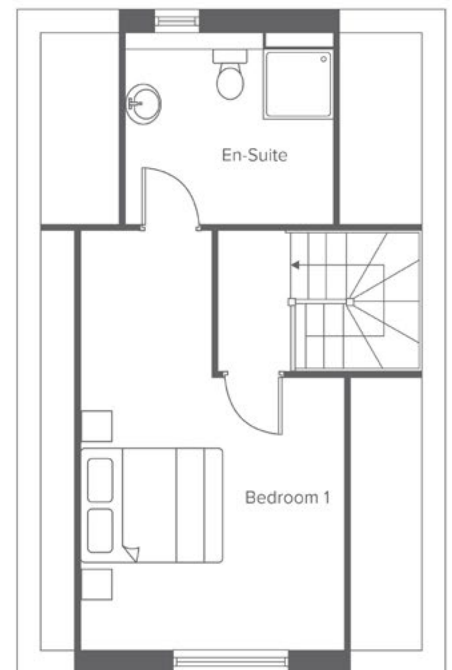
# THE SANKEY WHITEFIELD BROOK



Ground Floor	Metric	Imperial
Kitchen / Dining	4.3 x 4.7	14'1" x 15'5"
Living Room	3.5 x 2.6	11'5" x 8'6"
W.C.	1.0 x 1.5	3'3" x 4'11"




First Floor	Metric	Imperial
Bedroom 2	3.1 x 4.7	10'2" x 15'5"
Bedroom 3	2.6 x 4.7	8'6" x 15'5"
Bathroom	2.0 x 1.9	6'6" x 5'6"





Second Floor	Metric	Imperial
Bedroom 1	2.4 x 2.6	7'10" x 8'6"
En-Suite	5.3 x 3.2	17'4" x 10'5"


CONTACT OUR TEAM

 0151 601 8934

 [yourhousinggroup.co.uk](http://yourhousinggroup.co.uk)

 @yourhousinggroup

 @Your\_Housing

 @yourhousing