



Persona Homes

by Home Group

KINGSFIELD PARK

HULL

ADLINGTON

2 bedroom house

A collection of two-bedroom homes available with shared ownership in Kingswood, Hull.

These homes are perfectly placed with a wide range of amenities nearby and Hull city centre less than 20-minutes' away. At Kingsfield Park, we have homes to suit all tastes. Whether you are a first-time buyer, a growing family, or looking to upsize or downsize, you're sure to find a home that is right for you.



Contact us:

T: 0800 030 8888

E: contactus@yourpersonahome.com

W: yourpersonahome.com

Kingsfield Park, Hull, HU7 3LH

Ground floor

Kitchen/dining 4.1m x 4.2m

Lounge 4.2m x 3.2m

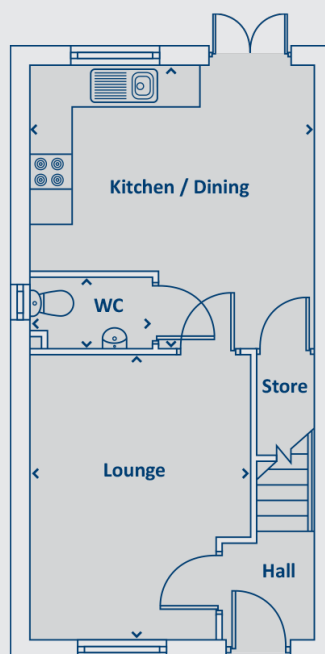
First floor

Master bedroom 3.1m x 4.1m

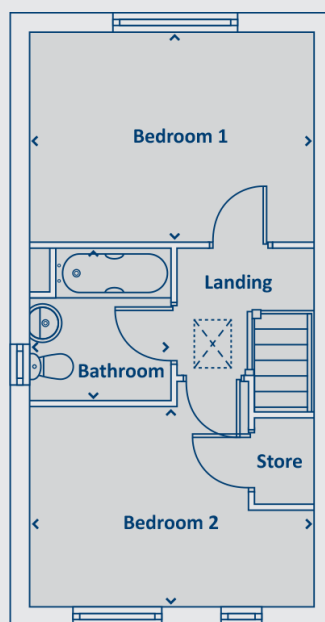
Bedroom 2 2.9m x 4.2m

Bathroom 2.2m x 2m

Total floor area 71.54m²



Ground floor



First floor



Any floor plans are a general outline of the layout of the property for guidance only. All measurements are approximate and may vary and any intending purchasers should not rely on them as statements of fact or representations of fact but must satisfy themselves by inspection or otherwise as to their accuracy. Dimensions shown are not intended to be relied upon for installation of appliances or items of furniture or otherwise. CGI's and images are for illustrative purposes only. Specifications are subject to change. Images are indicative only and may be of previous developments.*Journey times and distances taken from [google.com/maps](https://www.google.com/maps) and are correct before going to print. All times and distances listed are approximate and may vary depending on time of travel.



Persona Homes

by Home Group

KINGSFIELD PARK

HULL

SOWERBY

3 bedroom house

A collection of three-bedroom homes available with shared ownership in Kingswood, Hull.

These homes are perfectly placed with a wide range of amenities nearby and Hull city centre less than 20-minutes' away. At Kingsfield Park, we have homes to suit all tastes. Whether you are a first-time buyer, a growing family, or looking to upsize or downsize, you're sure to find a home that is right for you.



Contact us:

T: 0800 030 8888

E: contactus@yourpersonahome.com

W: yourpersonahome.com

Kingsfield Park, Hull, HU7 3LH

Ground floor

Kitchen/dining 5m x 3.5m

Lounge 4.1m x 3.8m

First floor

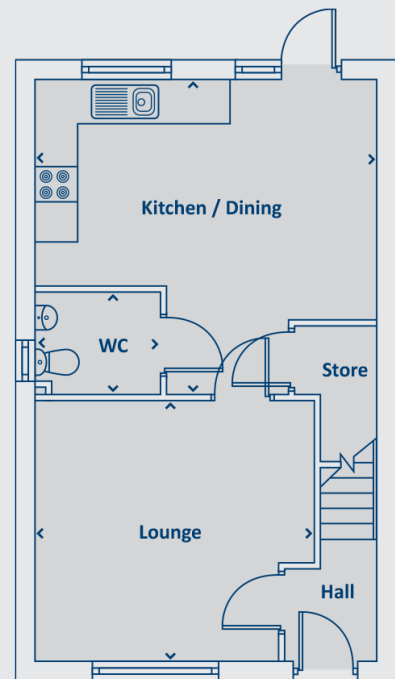
Master bedroom 5m x 2.8m

Bedroom 2 2.2m x 3.8m

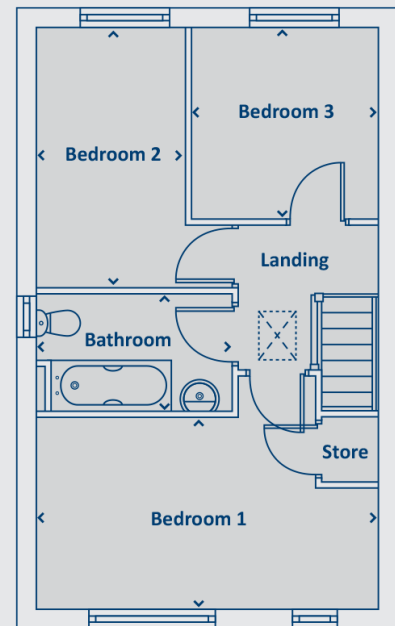
Bedroom 3 2.8m x 4.2m

Bathroom 2.8m x 1.7m

Total floor area 85.94m²



Ground floor



First floor



Any floor plans are a general outline of the layout of the property for guidance only. All measurements are approximate and may vary and any intending purchasers should not rely on them as statements of fact or representations of fact but must satisfy themselves by inspection or otherwise as to their accuracy. Dimensions shown are not intended to be relied upon for installation of appliances or items of furniture or otherwise. CGI's and images are for illustrative purposes only. Specifications are subject to change. Images are indicative only and may be of previous developments.*Journey times and distances taken from [google.com/maps](https://www.google.com/maps) and are correct before going to print. All times and distances listed are approximate and may vary depending on time of travel.



Persona Homes

by Home Group

KINGSFIELD PARK

HULL

THE EMBLETON

3 bedroom house

A lovely home that has enough space for the whole family!

The Embleton has a great open-plan kitchen and dining space that will be the real heart to the home. Add to this three bedrooms, an en-suite to the main bedroom, a modern bathroom and a handy downstairs cloakroom, there is enough room for the whole family.



Contact us:

T: 0800 030 8888

E: contactus@yourpersonahome.com

W: yourpersonahome.com

Kingsfield Park, Hull, HU7 3LH

Ground floor

Kitchen/dining 5.3m x 3.01m

Living room 5.3m x 3.95m

First floor

Main bedroom 3.96m x 3.06m

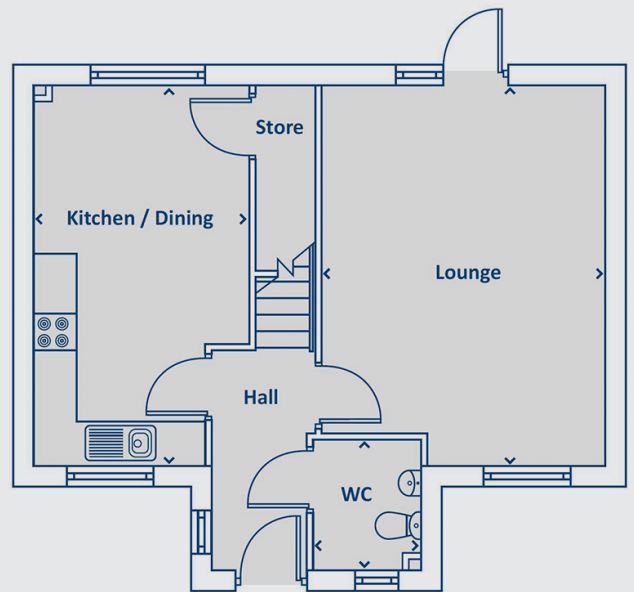
Main bedroom en-suite 2.93m x 1.37m

Bedroom 2 3.95m x 2.62m

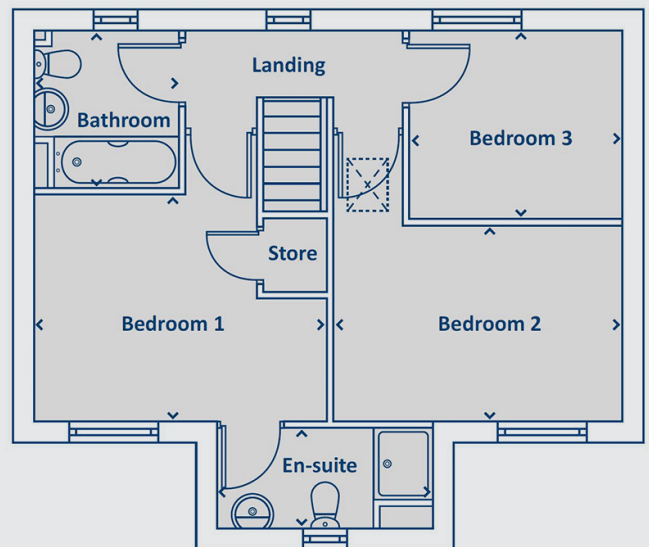
Bedroom 3 2.9m x 2.59m

Bathroom 2.15m x 1.95m

Total floor area 94.76m²



Ground floor



First floor



Any floor plans are a general outline of the layout of the property for guidance only. All measurements are approximate and may vary and any intending purchasers should not rely on them as statements of fact or representations of fact but must satisfy themselves by inspection or otherwise as to their accuracy. Dimensions shown are not intended to be relied upon for installation of appliances or items of furniture or otherwise. CGI's and images are for illustrative purposes only. Specifications are subject to change. Images are indicative only and may be of previous developments.*Journey times and distances taken from google.com/ maps and are correct before going to print. All times and distances listed are approximate and may vary depending on time of travel.



Persona Homes

by Home Group

KINGSFIELD PARK

HULL

THE FOXHILL

3 bedroom house

A great choice for a growing family.

The open-plan kitchen and dining room comes with French doors and windows, making this a really bright and airy space. The separate living room with a bay window is the perfect place to relax after a busy day. With three bedrooms, including an en-suite in the main bedroom, and a well-appointed family bathroom, you'll find ample space for everyone to relax and unwind.



Contact us:

T: 0800 030 8888

E: contactus@yourpersonahome.com

W: yourpersonahome.com

Kingsfield Park, Hull, HU7 3LH

Ground floor

Kitchen/dining 5.3m x 3.01m

Living room 5.3m x 3.4m

First floor

Main bedroom 3.96m x 3.06m

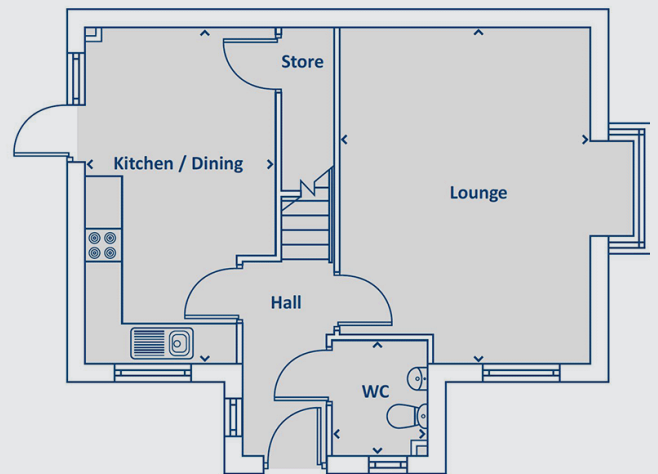
Main bedroom en-suite 2.93m x 1.37m

Bedroom 2 3.95m x 2.62m

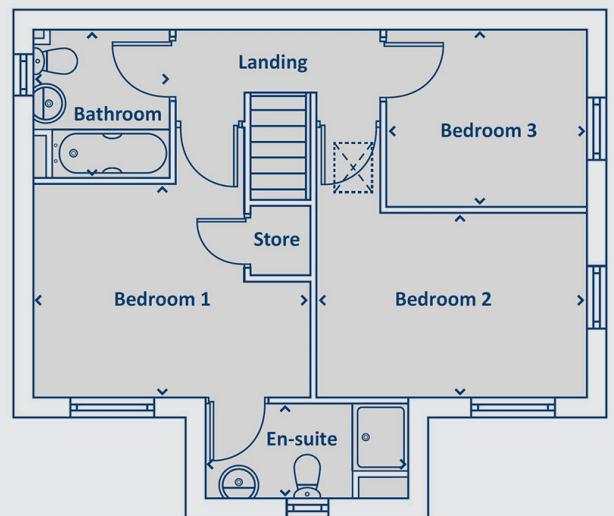
Bedroom 3 2.9m x 2.59m

Bathroom 2.15m x 1.95m

Total floor area 95.78m²



Ground floor



First floor



Any floor plans are a general outline of the layout of the property for guidance only. All measurements are approximate and may vary and any intending purchasers should not rely on them as statements of fact or representations of fact but must satisfy themselves by inspection or otherwise as to their accuracy. Dimensions shown are not intended to be relied upon for installation of appliances or items of furniture or otherwise. CGI's and images are for illustrative purposes only. Specifications are subject to change. Images are indicative only and may be of previous developments.*Journey times and distances taken from [google.com/maps](https://www.google.com/maps) and are correct before going to print. All times and distances listed are approximate and may vary depending on time of travel.



Persona Homes

by Home Group

KINGSFIELD PARK

HULL

THE LAMBETH

4 bedroom house

A collection of four-bedroom homes available with shared ownership in Kingswood, Hull.

The modern kitchen and dining area with breakfast bar is the perfect place to bring the family together and will be a real heart to the home. The Lambeth also comes with plenty of storage space throughout the home. Whilst the separate living room will give you the chance to escape the hustle and bustle of a busy household at the end of the day.



Contact us:

T: 0800 030 8888

E: contactus@yourpersonahome.com

W: yourpersonahome.com

Kingsfield Park, Hull, HU7 3LH

Ground floor

Kitchen/dining 6.13m x 3.46m

Living room 5.06m x 3.15m

First floor

Bedroom 1 3.36m x 3.02m

Bedroom 1 en-suite 2.21m x 1.19m

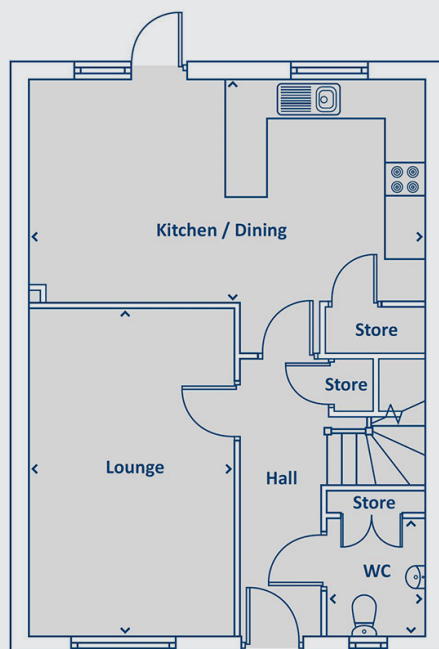
Bedroom 2 4.3m x 2.68m

Bedroom 3 3.18m x 2m

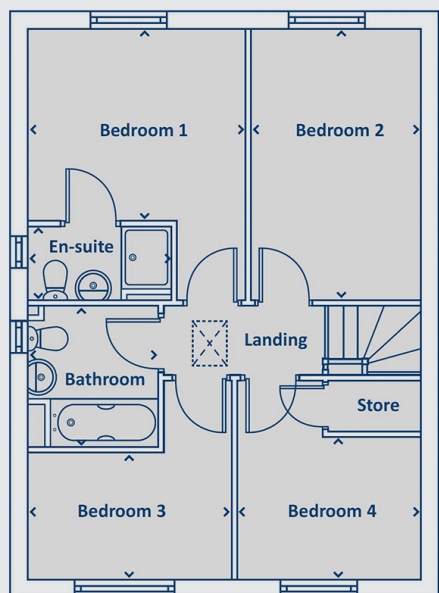
Bedroom 4 2.87m x 2.23m

Bathroom 2.15m x 2m

Total floor area 107.77m²



Ground floor



First floor



Any floor plans are a general outline of the layout of the property for guidance only. All measurements are approximate and may vary and any intending purchasers should not rely on them as statements of fact or representations of fact but must satisfy themselves by inspection or otherwise as to their accuracy. Dimensions shown are not intended to be relied upon for installation of appliances or items of furniture or otherwise. CGI's and images are for illustrative purposes only. Specifications are subject to change. Images are indicative only and may be of previous developments.*Journey times and distances taken from [google.com/maps](https://www.google.com/maps) and are correct before going to print. All times and distances listed are approximate and may vary depending on time of travel.



Persona Homes

by Home Group

KINGSFIELD PARK

HULL

THE STRATFORD

3 bedroom house

This lovely 3-storey home is perfect for stepping onto the property ladder.

The Stratford has an open-plan kitchen/dining area and a separate living room – the perfect escape from a busy household. As well as an impressive main bedroom with a dressing area and en-suite, this home comes with driveway parking for 2 cars.



Contact us:

T: 0800 030 8888

E: contactus@yourpersonahome.com

W: yourpersonahome.com

Kingsfield Park, Hull, HU7 3LH

Ground floor

Kitchen/dining	4.51m x 3.01m
Living room	4.04m x 3.56m

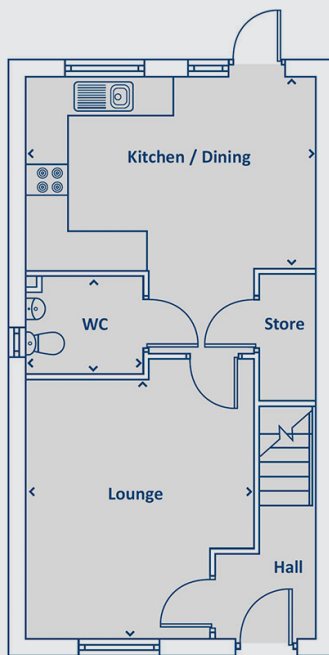
Second floor

Bedroom 2	5.95m x 4.51m
Bedroom 2 en-suite	2.35m x 1.8m

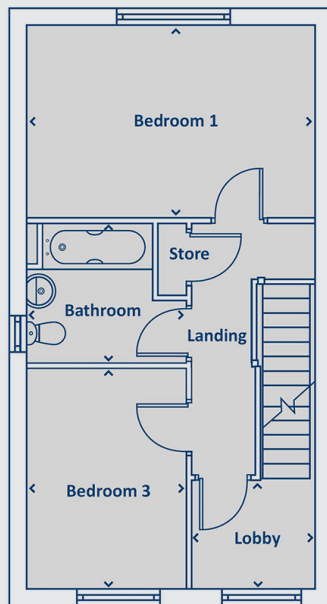
First floor

Bedroom 1	4.51m x 3m
Bedroom 3	3.4m x 2.47m
Bathroom	2.47m x 2.15m

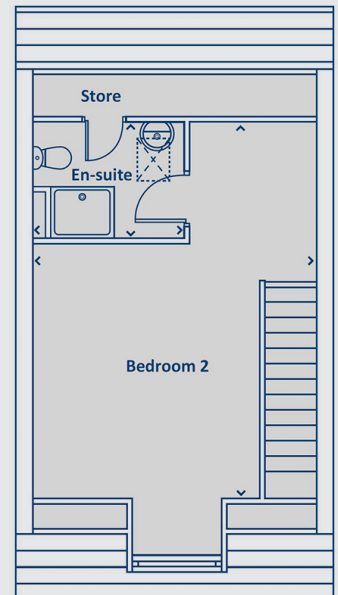
Total floor area 109.16m²



Ground floor



First floor



Second floor



Any floor plans are a general outline of the layout of the property for guidance only. All measurements are approximate and may vary and any intending purchasers should not rely on them as statements of fact or representations of fact but must satisfy themselves by inspection or otherwise as to their accuracy. Dimensions shown are not intended to be relied upon for installation of appliances or items of furniture or otherwise. CGI's and images are for illustrative purposes only. Specifications are subject to change. Images are indicative only and may be of previous developments.*Journey times and distances taken from [google.com/maps](https://www.google.com/maps) and are correct before going to print. All times and distances listed are approximate and may vary depending on time of travel.



Persona Homes

by Home Group

KINGSFIELD PARK

HULL

THE TURTON

4 bedroom house

Perfect for modern-day family living.

The Turton has a similar downstairs layout to Lambeth, however with the added bonus of a utility room! This gives you extra storage space in the kitchen. Four bedrooms, a modern family bathroom and a garage completes this lovely home.



Contact us:

T: 0800 030 8888

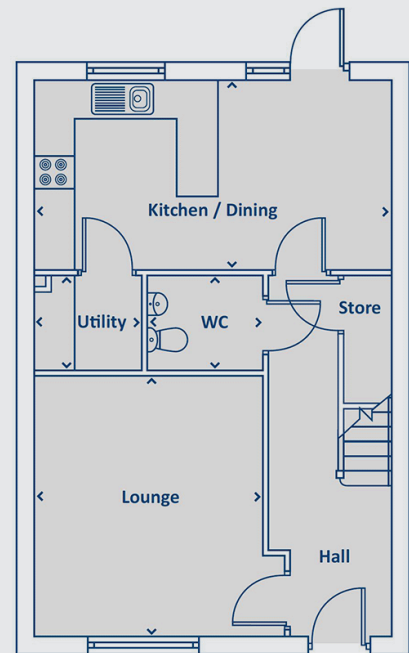
E: contactus@yourpersonahome.com

W: yourpersonahome.com

Kingsfield Park, Hull, HU7 3LH

Ground floor

Kitchen/dining	5.57m x 3m
Living room	4.11m x 3.58m
Utility	1.64m x 1.46m

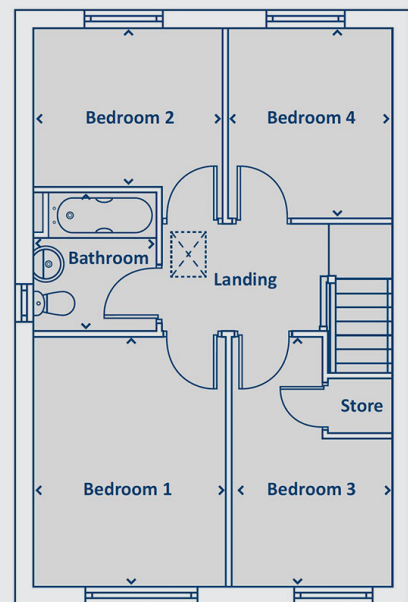


Ground floor

First floor

Bedroom 1	3.9m x 3.03m
Bedroom 2	2.98m x 2.5m
Bedroom 3	3.9m x 2.45m
Bedroom 4	3m x 2.5m
Bathroom	2.15m x 1.93m

Total floor area 99.22m²



First floor



Any floor plans are a general outline of the layout of the property for guidance only. All measurements are approximate and may vary and any intending purchasers should not rely on them as statements of fact or representations of fact but must satisfy themselves by inspection or otherwise as to their accuracy. Dimensions shown are not intended to be relied upon for installation of appliances or items of furniture or otherwise. CGI's and images are for illustrative purposes only. Specifications are subject to change. Images are indicative only and may be of previous developments.*Journey times and distances taken from google.com/ maps and are correct before going to print. All times and distances listed are approximate and may vary depending on time of travel.