



Ermine Way | Bacton | IP14 4GD

Brand New two bedroom property available with Havebury Housing Partnership. This beautiful home benefits from spacious living, modern kitchen, ground floor cloakroom and off road parking. Price is based on 40% share. Share options available from 25%-75%. Local Connection To Mid Suffolk Required.

Shared Ownership £108,000

- Brand New
- Shared Ownership
- 2 Bedrooms
- Ground Floor Cloakroom
- Garden
- Off Road Parking
- Local Connection To Mid Suffolk Required

Approximate Room Sizes

ENTRANCE HALL Cupboard to left hand side.

KITCHEN Range of wall and base units with stainless steel sink with drainer, oven with gas hob and extractor over, spaces for appliances.

GROUND FLOOR CLOAKROOM W/C, wash hand basin

LIVING ROOM Double glazed windows to rear and french door leading to the garden

FIRST FLOOR LANDING

BEDROOM ONE Double glazed window to rear

BEDROOM TWO Two double glazed windows to front, built in cupboard

BATHROOM W/C, pedestal wash hand basin, panelled bath

AGENTS NOTE FULL PRICE: £270,000

40% SHARE: £108,000

60% RENT: £371.25 pcm

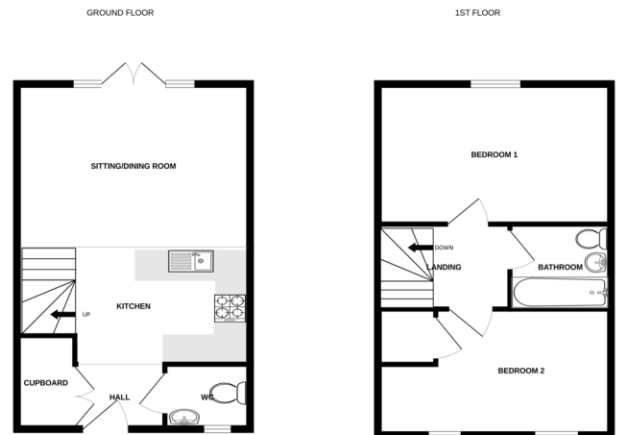
SERVICE CHARGE: £43.82

990 YEAR LEASE

Local Authority – Mid Suffolk District Council

Tenure – Leasehold

Post Code – IP14 4GD



Whilst every attempt has been made to ensure the accuracy of the floorplan contained herein, measurements of doors, windows, rooms and any other parts are approximate and no responsibility is taken for any error, omission or mis-statement. This plan is to be regarded as a guide only and should be used as such for the prospective purchaser. The vendor, licensors and applicants shall have no liability for the floor plan and the plan shall be void if any error is found.



Contact Details

6 The Traverse, Bury St Edmunds, IP33 1BJ

Tel: 01284 769598

Email: burystedmunds@bychoice.co.uk

Agents Note: Whilst every care has been taken to prepare these sales particulars, they are for guidance purposes only. All measurements are approximate and for general guidance purposes only and whilst every care has been taken to ensure their accuracy, they should not be relied upon and potential buyers are advised to check the measurements.

