



THE FILEY

Generously sized bedrooms make The Filey a popular choice with families. The downstairs features a flexible open-plan kitchen-dining area, in addition to a separate living room. On the first floor, each of the three bedrooms are well proportioned and share a family bathroom. While the entire second floor hosts the main bedroom suite. The house also benefits from a downstairs cloakroom, ample storage and generous quantities of natural light.

4 BEDROOM HOME

GARDEN VILLAGE

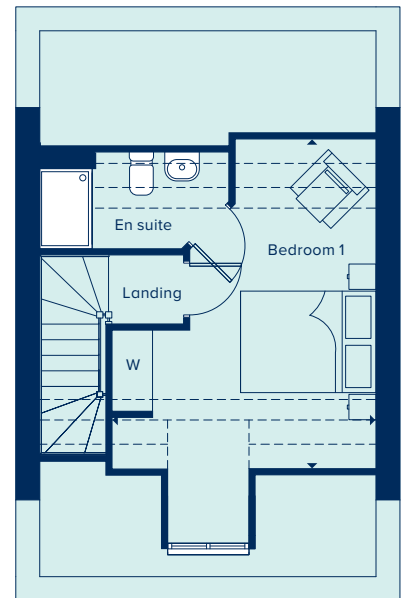
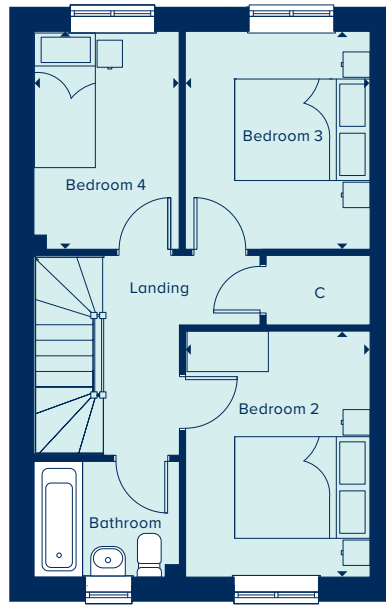
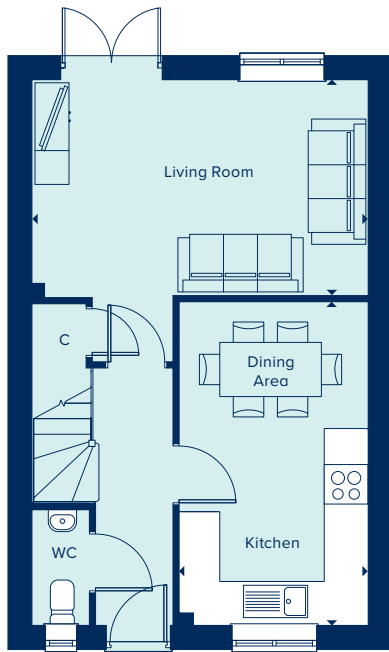




**CREST
NICHOLSON**

THE FILEY
4 Bedroom Home

crestnicholson.com



GROUND FLOOR

LIVING ROOM

4.96m x 3.19m 16'3" x 10'5"

KITCHEN / DINING AREA

4.78m x 2.79m 15'8" x 9'2"

FIRST FLOOR

BEDROOM 2

3.63 x 2.72m 11'11" x 8'11"

BEDROOM 3

3.21 x 2.73m 10'6" x 8'11"

BEDROOM 4

3.21m x 2.14m 10'6" x 7'0"

SECOND FLOOR

BEDROOM 1

4.87m x 3.85m 15'11" x 12'7"

C Cupboard W Wardrobe ● Specification -- Reduced ceiling height

Please note, the digital illustrations are for illustration purposes only and any may not accurately depict elevation materials, gradients, landscaping or street furniture and may be subject to change. Whilst every effort has been made to ensure that the measurements and dimensions referred to in this brochure are an accurate reflection of the dimensions and measurements of the plots when built, the dimensions may vary from the measurements shown in the brochure save that any such variation shall be no greater than +/- 50mm of the measurements referred to in the brochure. You are strongly advised, therefore, not to order any carpets, appliances or any other goods which depend on precise dimensions before carrying out an actual measurement within your reserved plot. Whilst every reasonable effort has been made to ensure that the information contained in this brochure is correct, it is designed specifically as a guide only and does not constitute or form any part of a contract of sale transfer or lease unless any point that you specifically want to rely on is confirmed in writing by Crest Nicholson and is referred to in the contract. Please ask a sales executive for further details. Crest Nicholson is a registered developer with the New Homes Quality Code. Please speak to a sales executive if you need further help with any marketing material including provision in another format. STU9135/January 2023.

