

Lucas Place

ACOCKS GREEN, BIRMINGHAM

Two and three bedroom houses
available through **Shared Ownership**



Contents

Tap or click the buttons to jump to the section you are interested in...

[About Lucas Place >](#)

[Transport Links >](#)

[Site Plan & Floor Plans >](#)

[Specification >](#)

[Shared Ownership Explained >](#)





Welcome to
Lucas Place

BIRMINGHAM

St Paul's Square,
Birmingham

Life on the edge of the city

**An exciting new community,
on the outskirts of Birmingham.**

Lucas Place is a new community of Shared Ownership homes with a range of excellent nearby amenities and transport options.



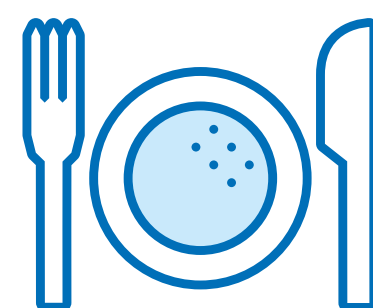


Living at Lucas Place



Established community

With shops, GP, dental practice, and leisure facilities.



Local dining

An excellent selection of pubs, restaurants and takeaways nearby.



Schools

A choice of well regarded primary and secondary schools within a mile.



Great location

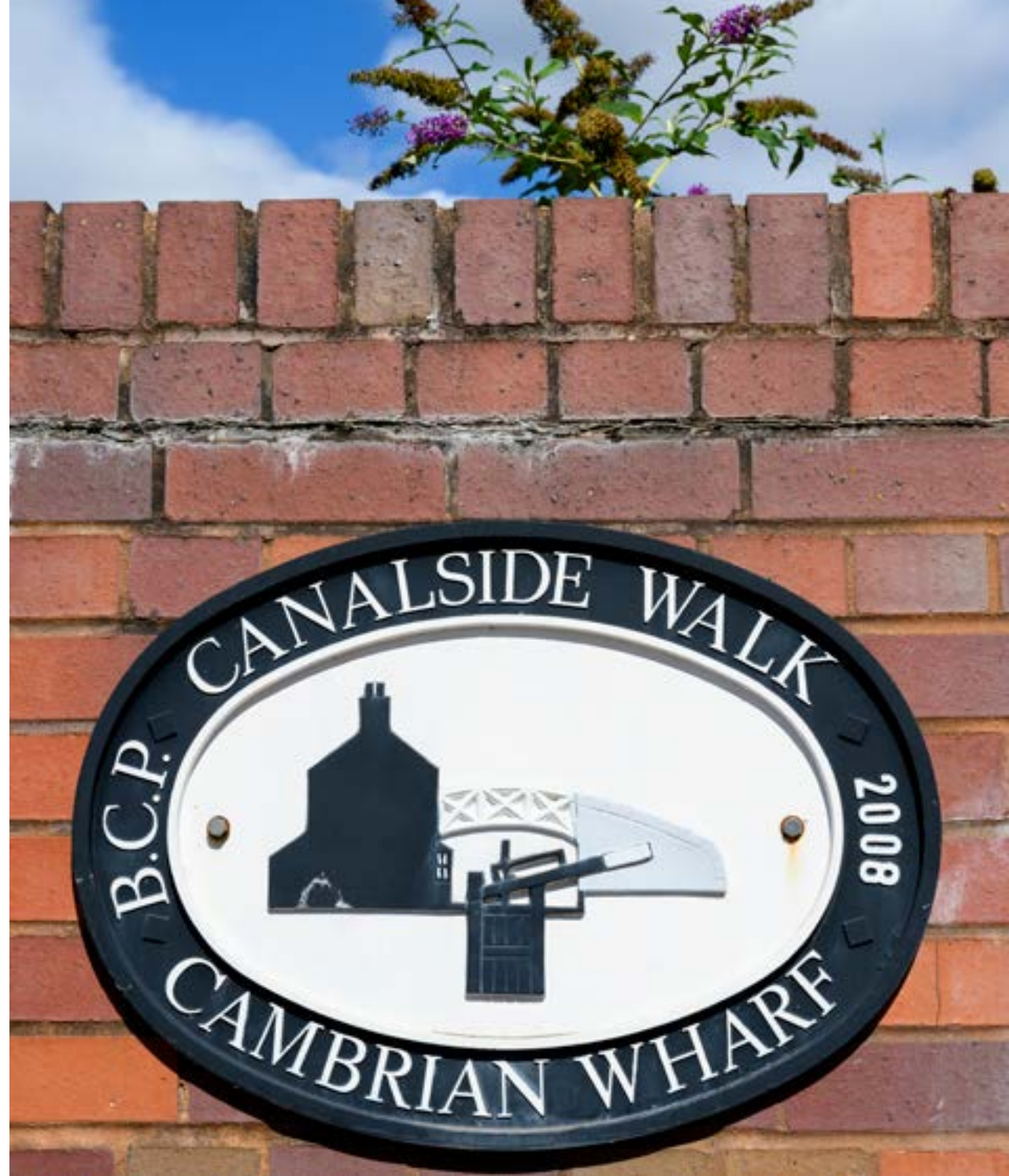
The nearest rail line and bus stop are just minutes away.

Interior images are computer generated and indicative only





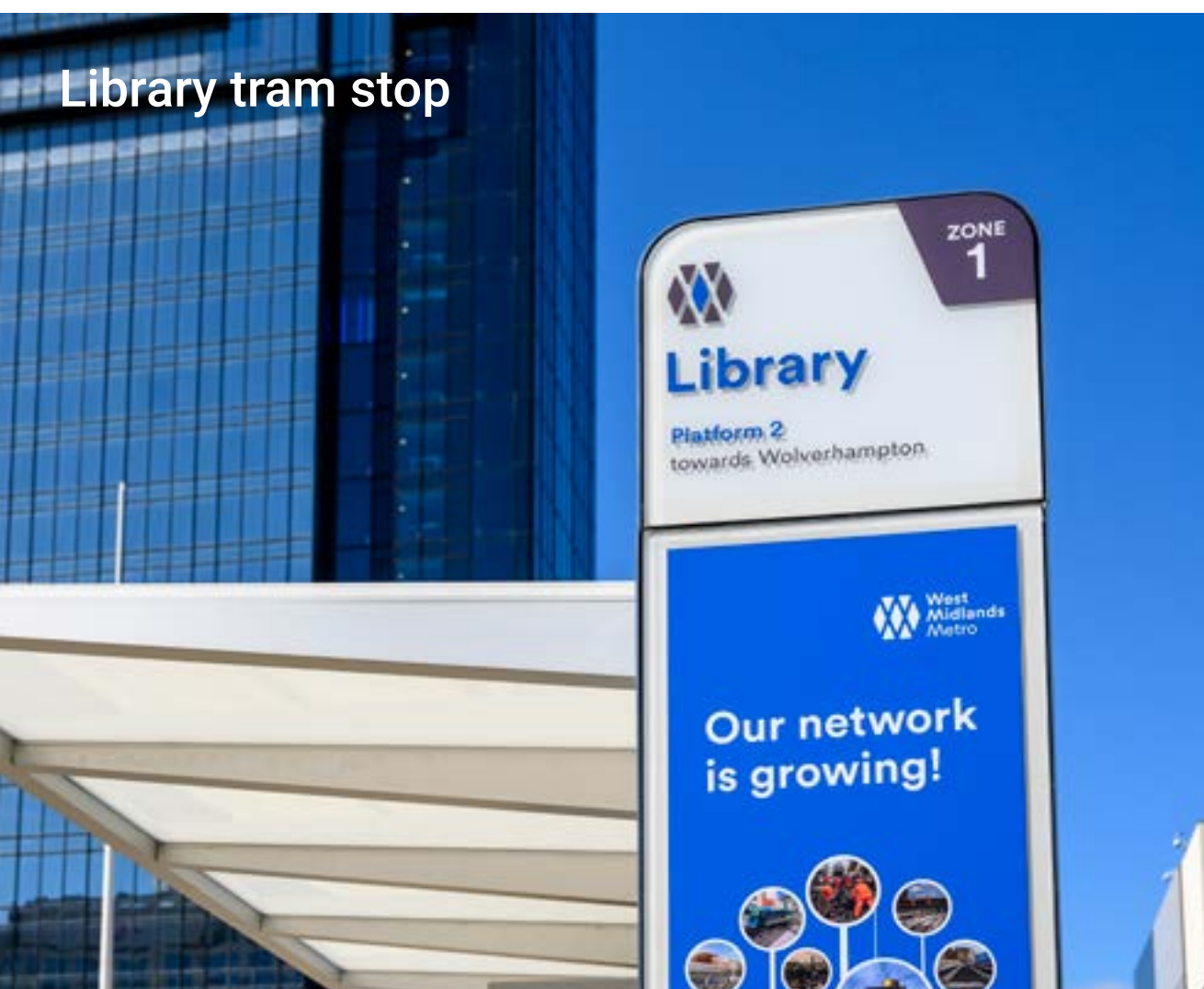
The River Cole



Endless possibilities on your doorstep



City Centre



Library tram stop



Birmingham Canal



Pioneers of the Industrial Revolution



The best of both worlds

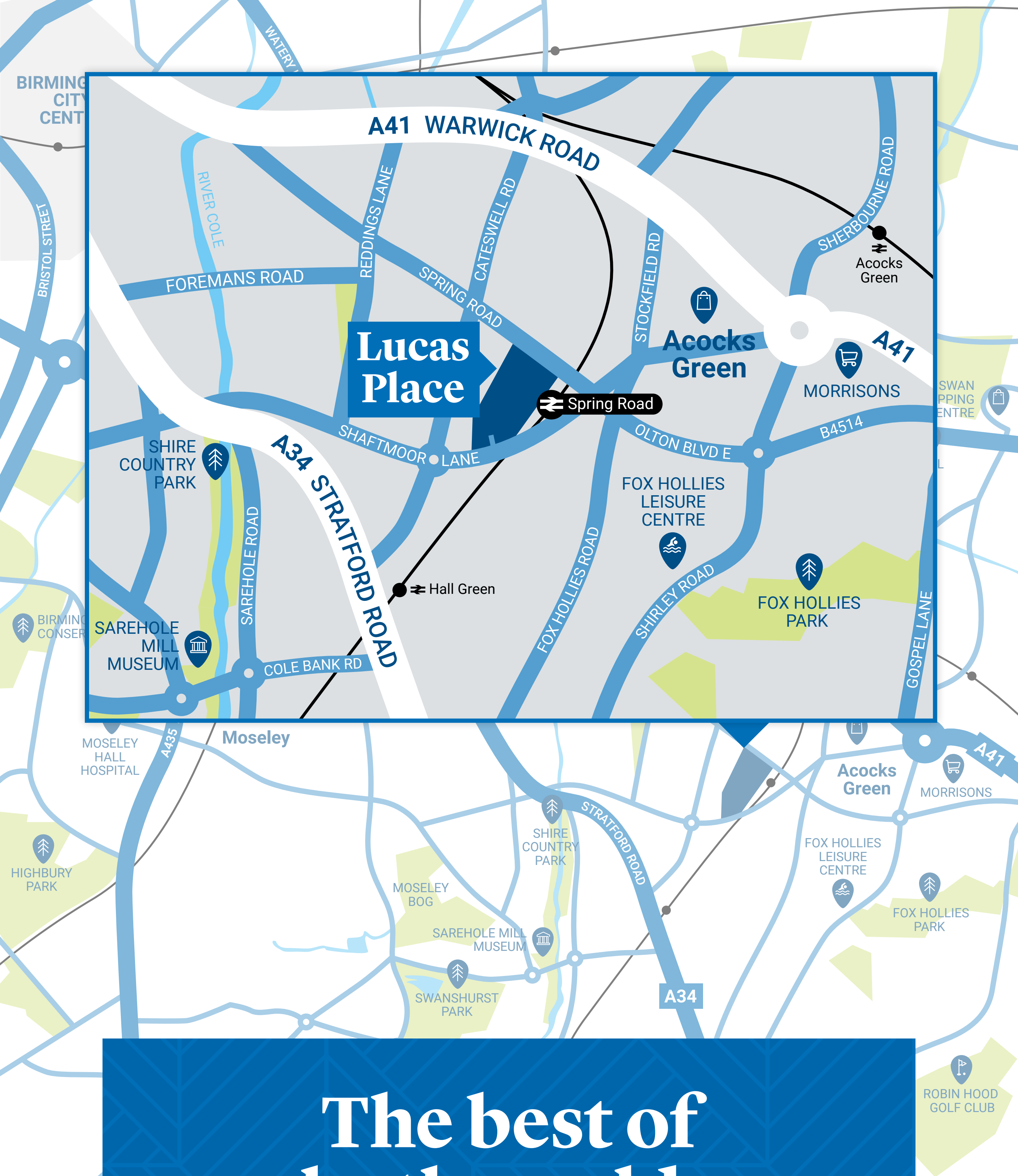
Lucas Place is close to the city centre, but far enough away for a quieter way of life.

Get Directions

[Google Maps](#)

zeal.brand.door





The best of both worlds

Lucas Place is close to the city centre, but far enough away for a quieter way of life.

Get Directions

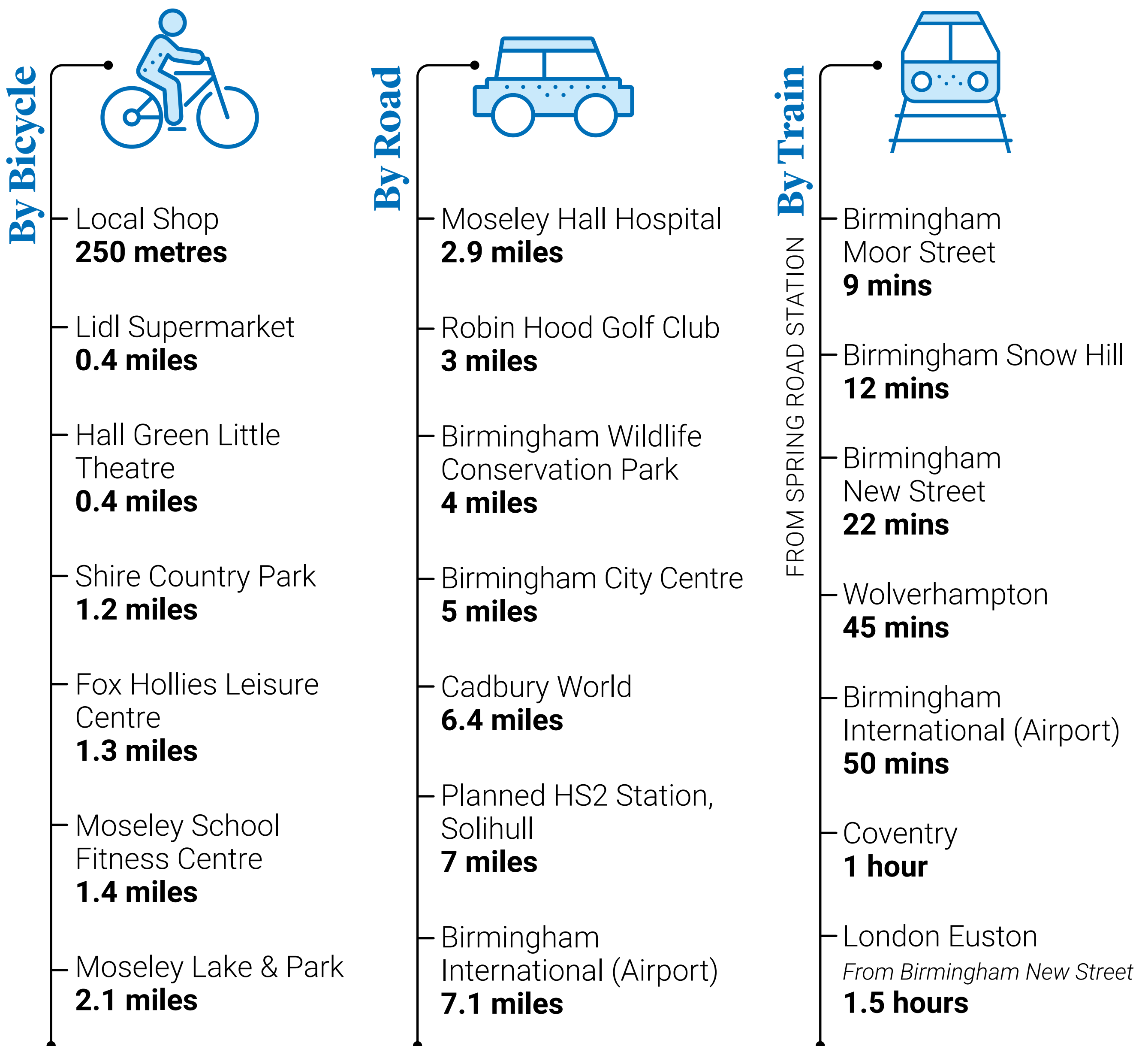
[Google Maps](#)

zeal.brand.door



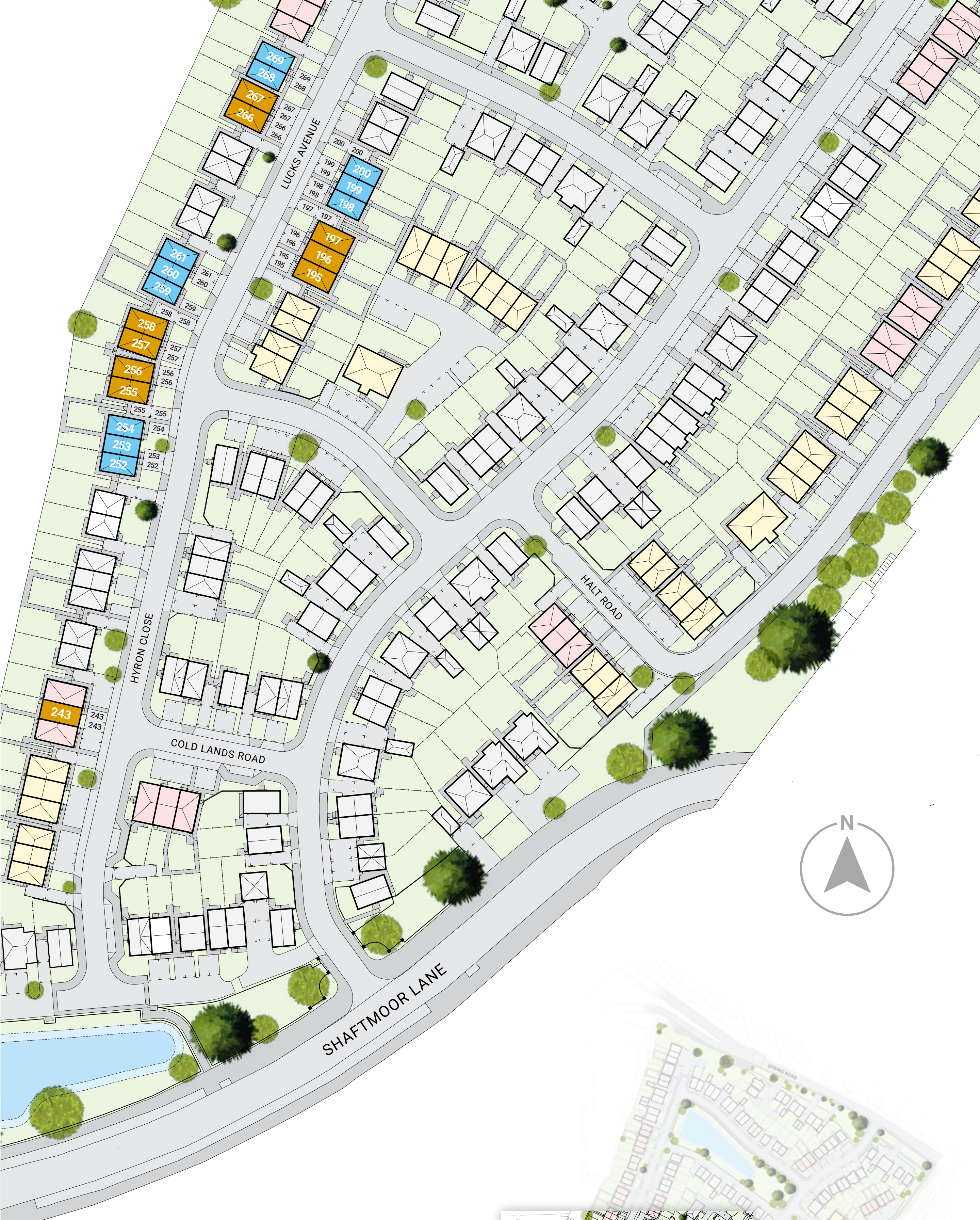
Well connected

The buzz of the city is just ten minutes away by train. Major roads including the A34 and A41, plus Birmingham's excellent bus network mean that whether by bike, car or public transport, you are easily connected.



Times supplied by Google Maps and Mid Western Railway and are approx only.





Key

- Two Bedroom Houses
- Three Bedroom Houses
- Shared Ownership Homes
- LGAH Rented Homes
- Barratt & David Wilson Homes

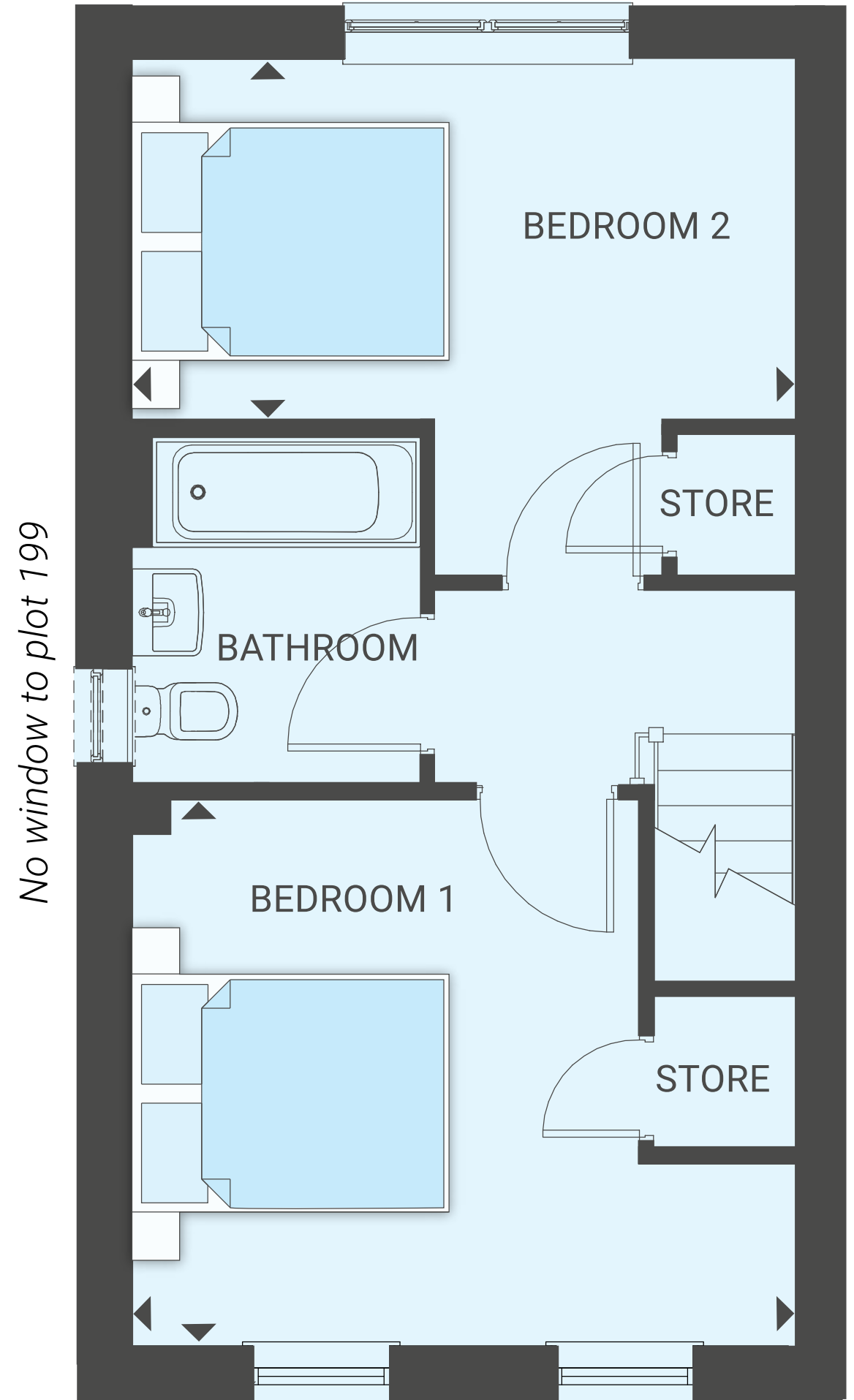
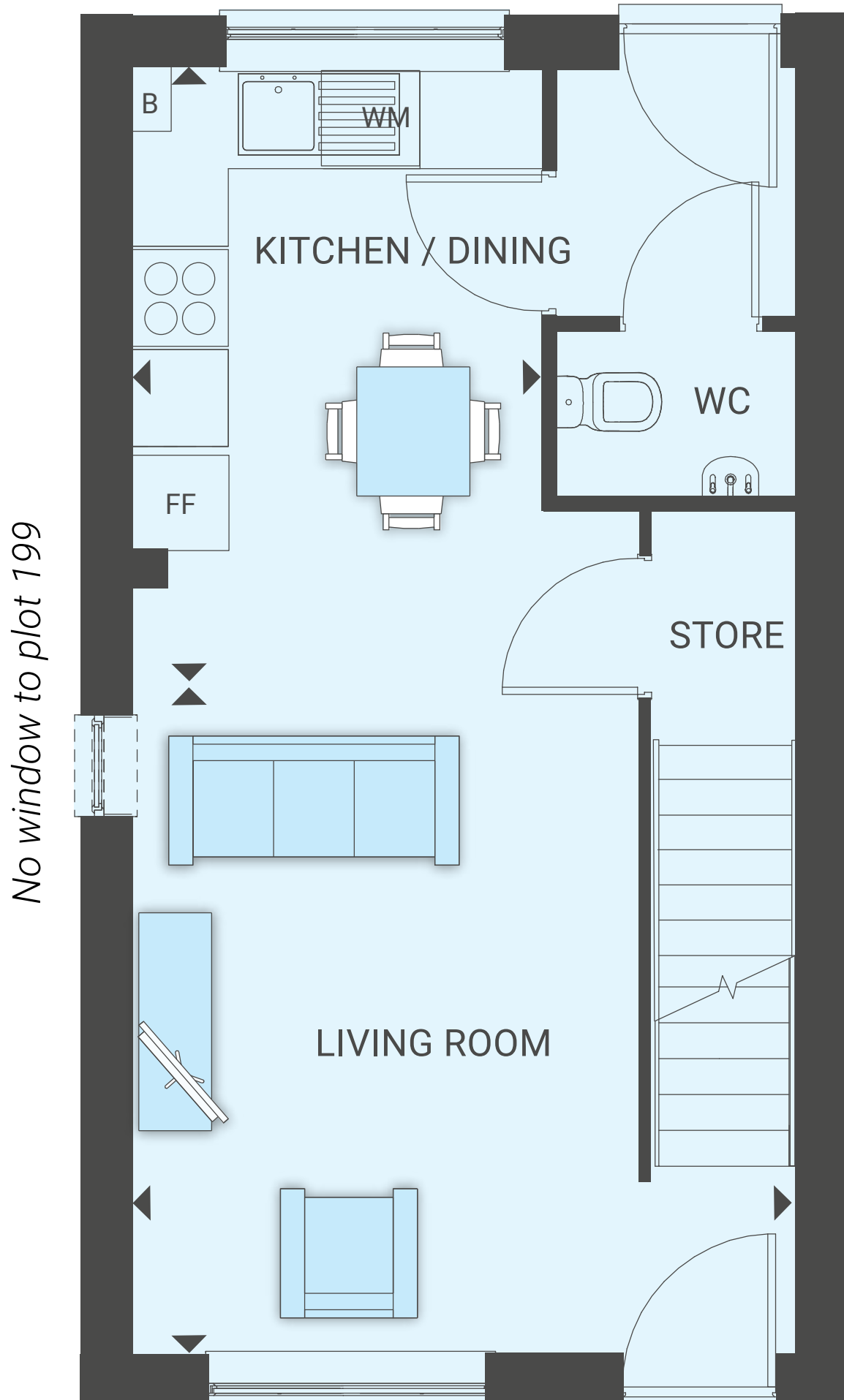
Layout is indicative only and subject to change by the developer (and subject to detailed design). The developer reserves the right to alter the layout, building style, landscaping and specification at any time.



Two Bedroom House

PLOTS 198*, 199 & 200

**plot is handed to plan drawn*



Dimensions

Total Area: 69.7 sq m / 750 sq ft

All measurements are length x width

KITCHEN/DINING

4.20m x 2.58m 13'7" x 8'4"

LIVING ROOM

4.60m x 4.24m 15'0" x 13'9"

BEDROOM 1

3.48m x 4.24m 11'4" x 13'9"

BEDROOM 2

2.33m x 4.24m 7'6" x 13'9"



Key FF Space for fridge/freezer B Boiler WM Space for washing machine

The floorplans shown are for approximate measurements only.

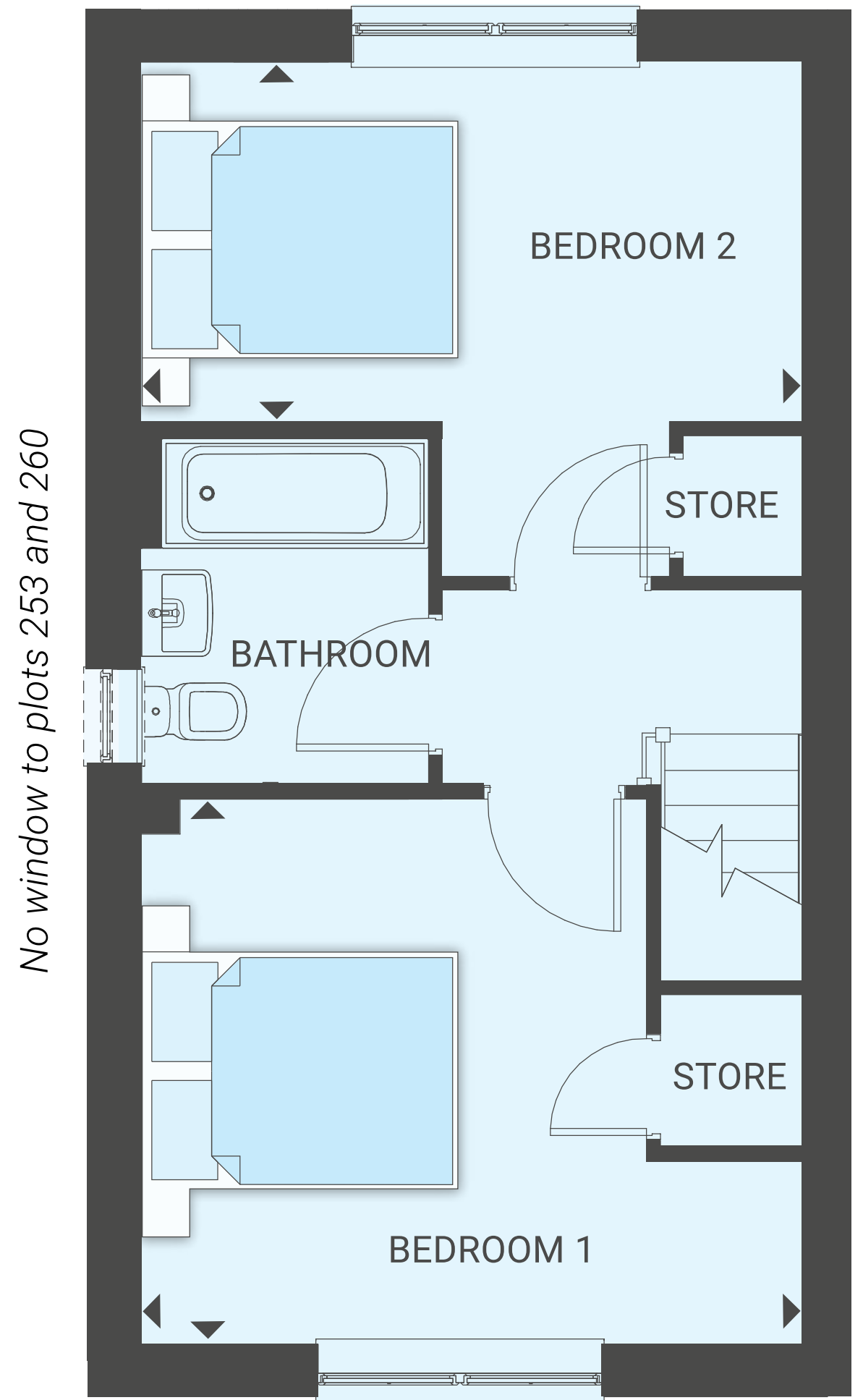
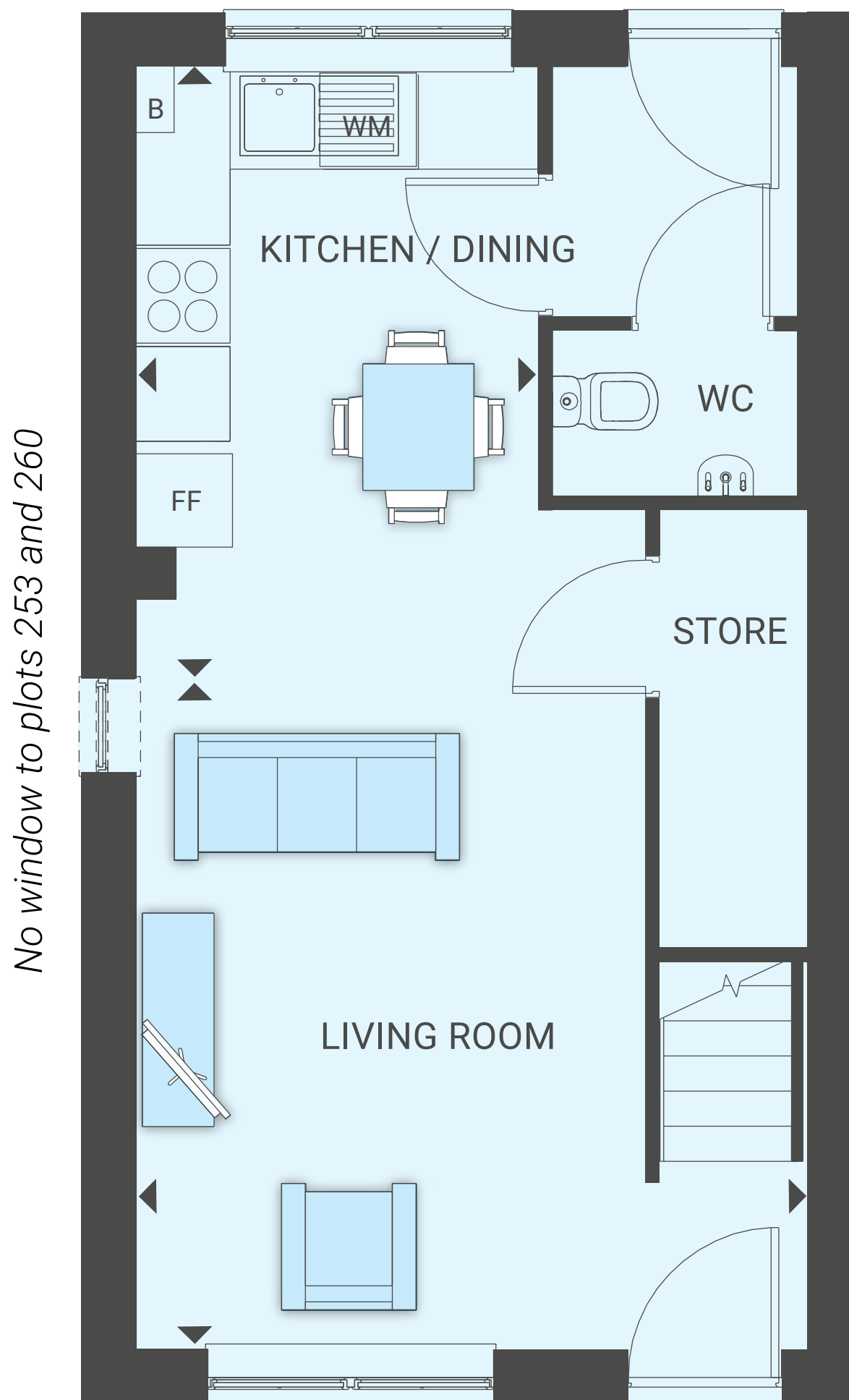
Read more >



Two Bedroom House

PLOTS 252, 253*, 254*, 259, 260, 261*, 268, 269*

*plot is handed to plan drawn



Dimensions

Total Area: 69.6 sq m / 749 sq ft

All measurements are length x width

KITCHEN/DINING

3.87m x 2.57m 12'8" x 8'4"

LIVING ROOM

4.27m x 3.24m 14'0" x 10'6"

BEDROOM 1

4.25m x 3.48m 13'9" x 11'4"

BEDROOM 2

4.25m x 2.31m 13'9" x 7'7"

Elevation reflective of plots 252, 254, 259, 261, 268 and 269.



Key FF Space for fridge/freezer B Boiler WM Space for washing machine

The floorplans shown are for approximate measurements only.

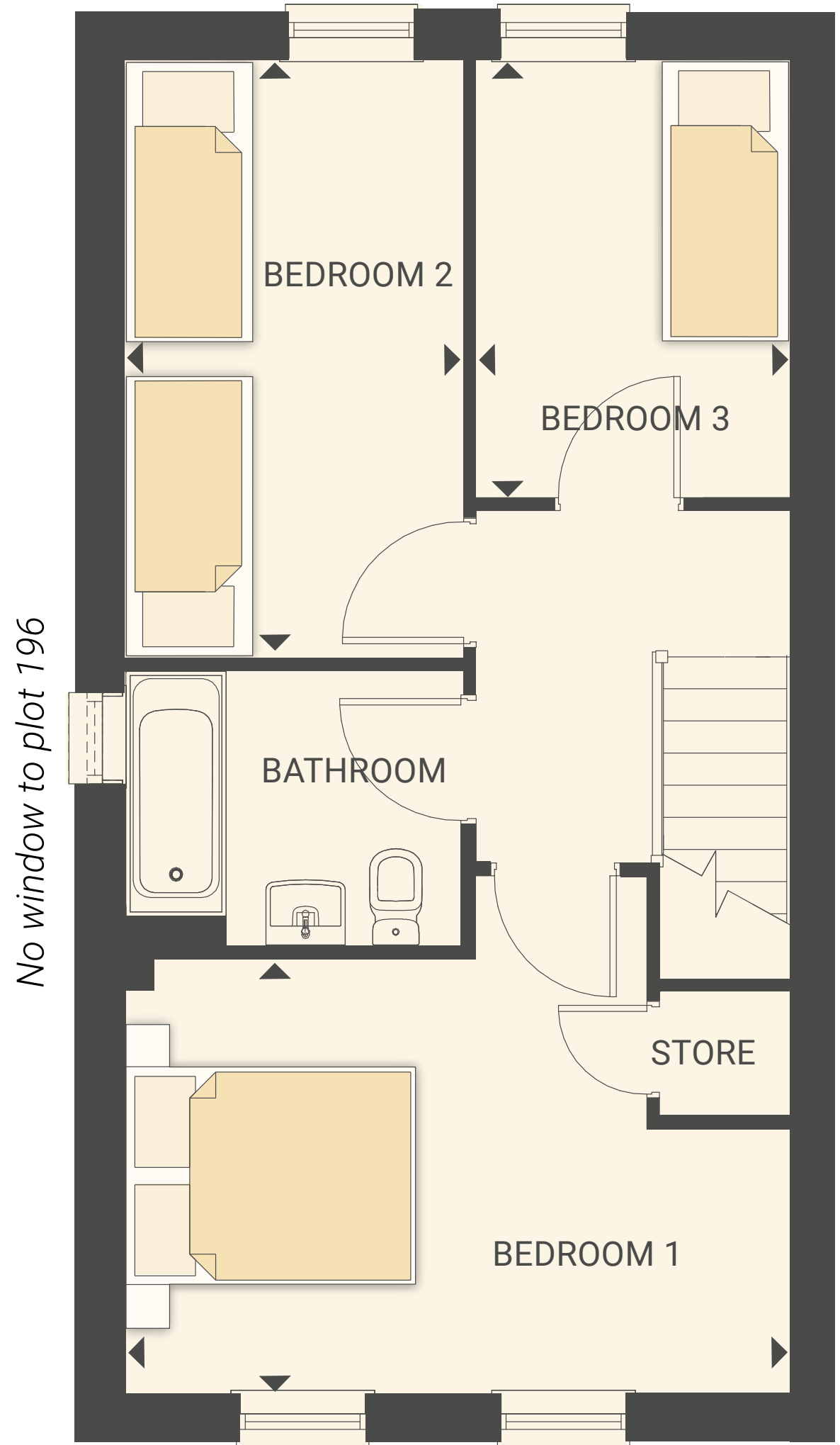
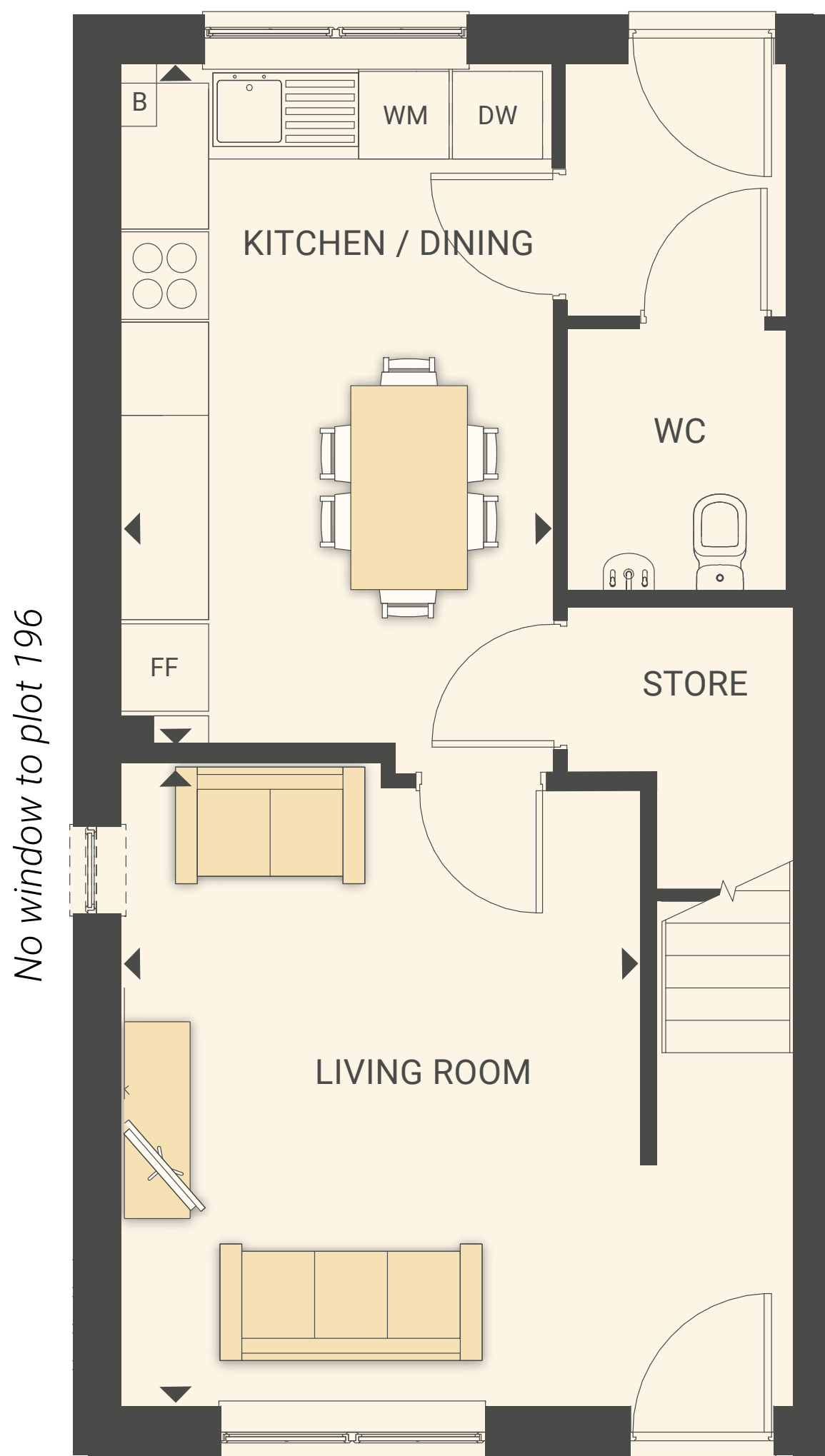
Read more >



Three Bedroom House

PLOTS 195*, 196*, 197

*plot is handed to plan drawn



Dimensions

Total Area: 86.4 sq m | 930 sq ft

All measurements are length x width

KITCHEN/DINING

4.27m x 3.02m 14'0" x 9'9"

LIVING ROOM

4.47m x 3.63m 14'6" x 11'9"

BEDROOM 1

4.64m x 3.01m 15'2" x 9'8"

BEDROOM 2

4.19m x 2.37m 13'7" x 7'7"

BEDROOM 3

3.07m x 2.21m 10'0" x 7'2"



Key FF Space for fridge/freezer B Boiler WM Space for washing machine
DW Space for dishwasher

The floorplans shown are for approximate measurements only.

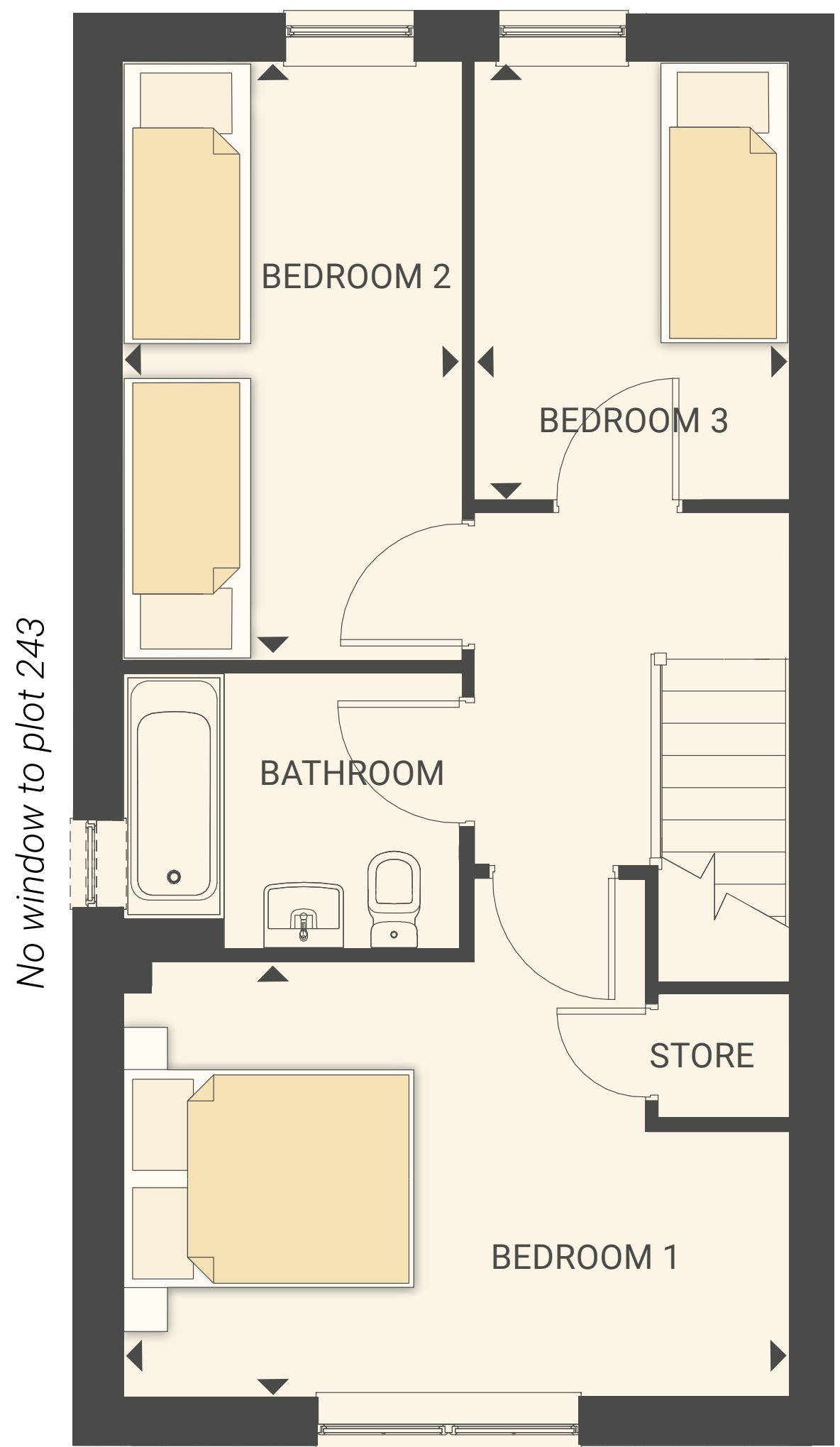
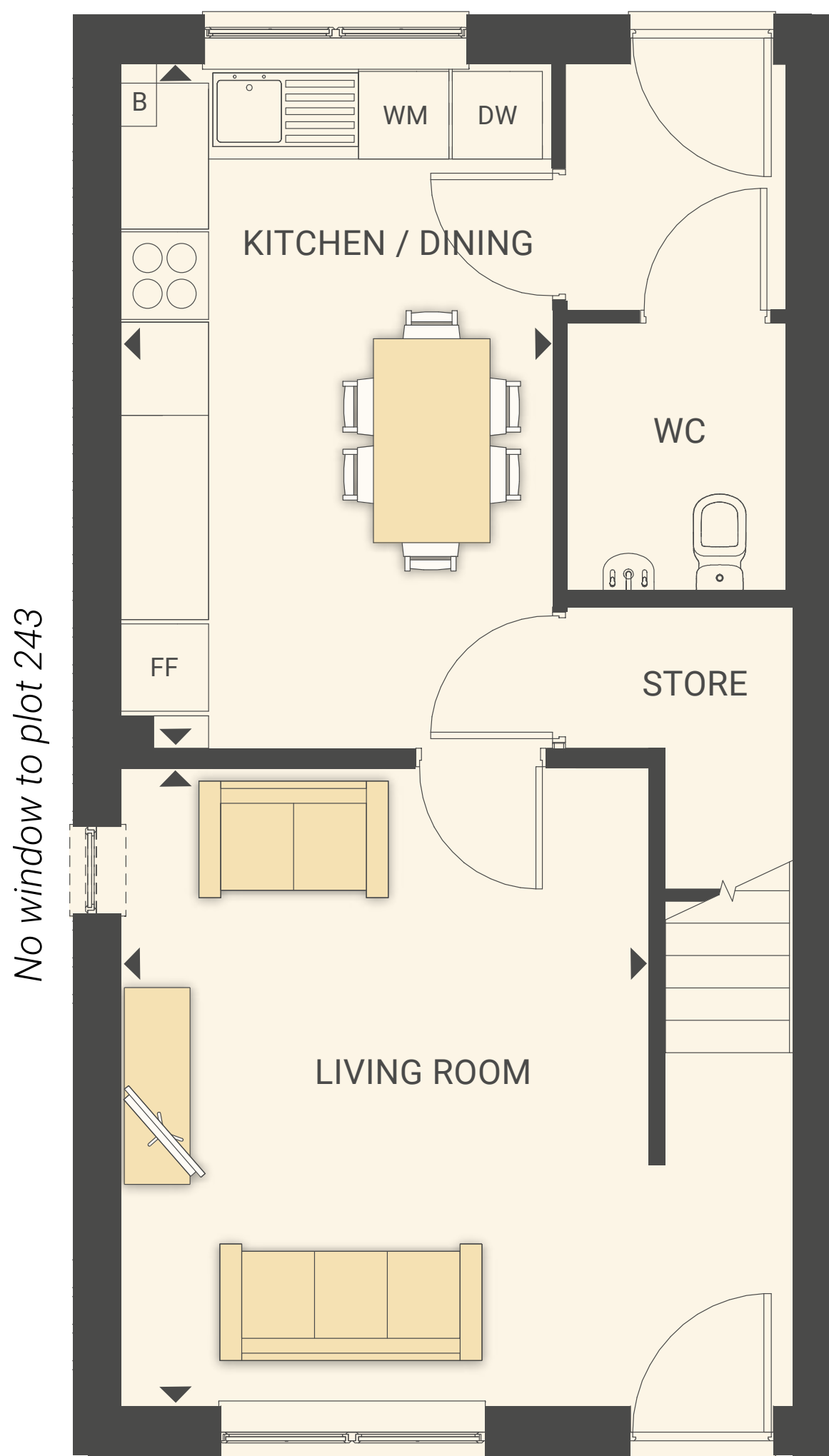
[Read more >](#)



Three Bedroom House

PLOTS 243, 255, 256*, 257, 258*, 266 & 267*

*plot is handed to plan drawn



Dimensions

Total Area: 86.4 sq m | 930 sq ft

All measurements are length x width

KITCHEN/DINING

4.27m x 2.99m 14'0" x 9'9"

LIVING ROOM

4.41m x 3.64m 14'5" x 11'11"

BEDROOM 1

3.02m x 4.65m 9'10" x 15'3"

BEDROOM 2

4.16m x 2.38m 13'7" x 7'9"

BEDROOM 3

3.05m x 2.21m 10'0" x 7'3"

Elevation reflective of plots 255, 256, 257, 258, 266 and 267.



Key FF Space for fridge/freezer B Boiler WM Space for washing machine
DW Space for dishwasher

The floorplans shown are for approximate measurements only.

Read more >



Interior images are computer generated and indicative only



Specification

Kitchen

- Contemporary kitchen with chrome handles and soft close cupboards
- Wood-effect laminate worktop with matching upstand
- Stainless steel splashback to hob
- Stainless steel 1½ bowl sink with chrome mixer tap
- Zanussi electric single oven, hob and stainless-steel chimney hood
- Space for fridge/freezer
- Space for washing machine
- Removable base unit for future installation of dishwasher to 3 bedroom houses

Cloakroom

- Contemporary white sanitaryware comprising close-coupled toilet and basin
- Chrome mixer tap with clicker waste
- Splashback tiling to basin
- Mirror

Bathroom

- Contemporary white bathroom suite comprising bath, close-coupled WC and pedestal basin
- Chrome mixer tap with clicker waste
- Glass shower screen to bath
- Thermostatic bath/shower mixer over bath
- Large format wall tiling to bath and splashback tiling to basin area
- Mirror
- Chrome heated towel rail

Flooring

- 2 bedroom homes have wood effect vinyl flooring throughout the ground floor and carpet to stairs, landing and bedrooms
- 3 bedroom homes have wood effect vinyl flooring to kitchen or kitchen/diner, cloakroom and bathroom and carpet to living room or living room/diner, stairs, landing and bedrooms



Specification

General

- White PVCu double-glazed windows
- Walls and ceilings painted in 'Almond White'
- Architraves and skirtings painted in white satinwood
- White panelled internal doors with chrome ironmongery
- Gas central heating via Combi boiler and white contemporary radiators
- NHBC 12-year build warranty

External

- Parking bay to all homes. Please check site plan for number of bays per plot
- Paved patio area
- Turf to rear garden
- Outside tap
- 1.8m high timber fencing to rear garden

Electrical

- Track light to kitchen
- Light fitting to cloakroom and bathroom
- Pendant lighting to all other areas
- White sockets and switches
- Telephone point to hall and living room
- TV point to living room
- Smoke and carbon monoxide detectors
- Extractor fan to bathroom, cloakroom and kitchen
- Shaver socket to bathroom
- Light to front and rear elevation



Interior images are computer generated and indicative only





Shared Ownership explained

Your essential guide to all things Shared Ownership with Legal & General

How does Shared Ownership work?

At Lucas Place, you can buy an initial share between 40% and 75% of the home's full value and pay a subsidised rent on the remainder. You can purchase further shares (up to 100%) as your circumstances change. Your annual rent is charged at 2.75% of the residual value of your home, which is reviewed annually each April. This is capped at RPI (Retail Price Index) from September of the previous year + 0.5%.

Am I eligible for Shared Ownership?

If you earn or have a household income up to a maximum of £80,000 per annum, you could be eligible. You can also use Shared Ownership to buy alone or with another person as long as your joint incomes don't exceed the maximum

earnings bracket. Some developments have eligibility or prioritisation requirements around where you live and/or work. Please speak to our Sales Consultant for further information.

What other charges will be payable?

Your home will be subject to a management fee - this is a fee payable monthly to cover the administrative costs of Legal & General Affordable Homes and our Management Provider. You will also be charged for the Buildings Insurance required to cover your home. Finally, all homes pay an Estate Charge which contributes to the maintenance of the wider estate, play areas or unadopted roads etc.



Shared Ownership explained

Can I buy additional shares in the property?

Yes, you can. This is known as 'staircasing'. When you buy more shares in your home, your home is re-valued and you buy the shares at the current market value, at the time you are buying the shares. You can staircase up to 100%.

Is it cheaper than renting?

Shared Ownership can be cheaper than renting privately as the mortgage cost and low rent usually add up to less than the equivalent rental payments to a landlord.

What if I already have a home?

If you already own a property you would need to have confirmed the sale of your home when you apply

to buy via Shared Ownership. Your application would be assessed based on your housing need for you to be considered for Shared Ownership.

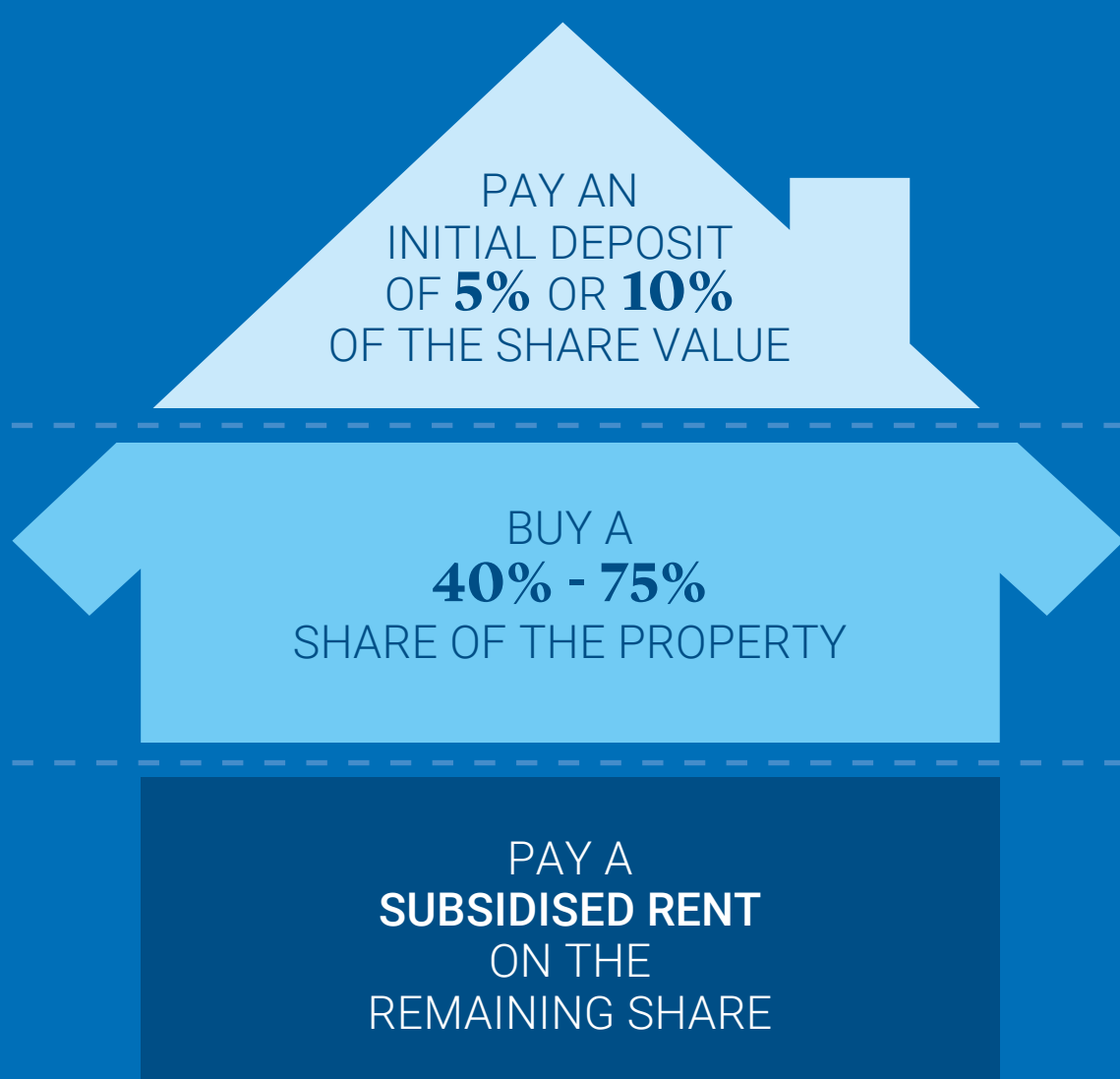
Will I need a deposit?

Yes, you still need a deposit, but only on the percentage of the property you are buying. Mortgage deposits are typically 5% or 10% of the share value.

We're here to help

If you're interested in viewing or applying for a property, or if you simply have some more questions around Shared Ownership, visit www.landgah.com

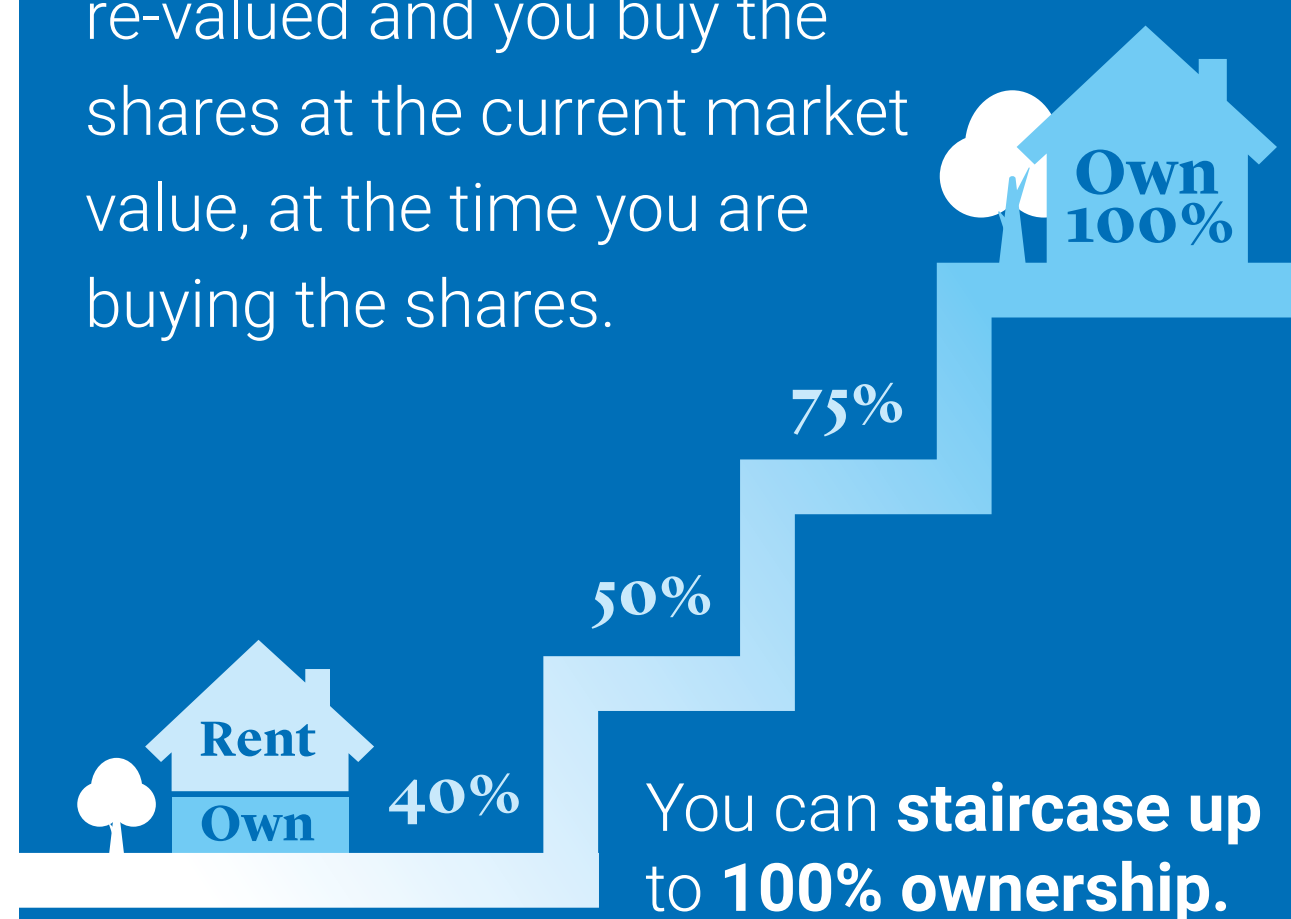
Breakdown example of buying a new home at Lucas Place



Buying more shares

Staircase your way to owning **100%**

When you buy more shares in your home, your home is re-valued and you buy the shares at the current market value, at the time you are buying the shares.



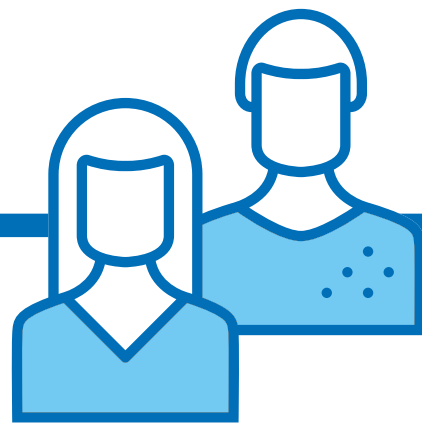
[READ MORE](#)

A step by step guide to owning your own home

Find a Legal & General Shared Ownership property you'd like to buy and follow our step by step guide to turn your home-buying dreams into reality.

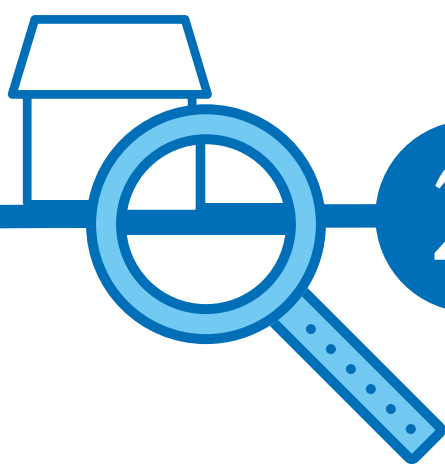


1



Book an appointment and **come and see us** in person or online

2



Find your dream home

3



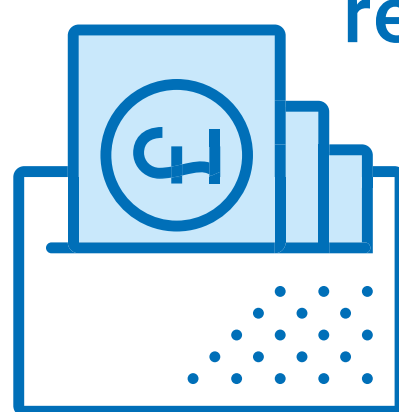
Speak to our recommended **qualified independent financial advisor** to see how much of the home you can buy

4

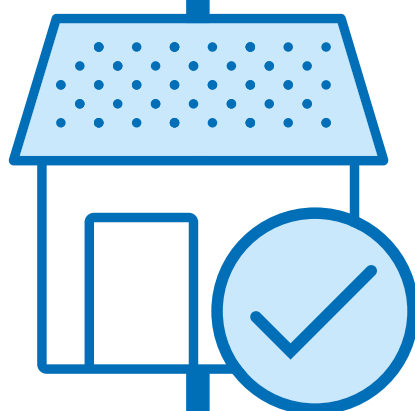


Complete your application and reservation paperwork

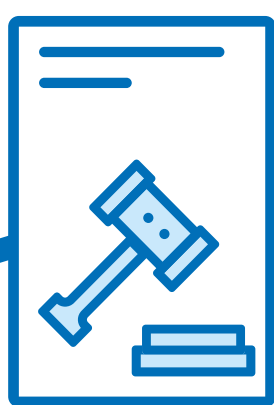
5



Pay your reservation fee

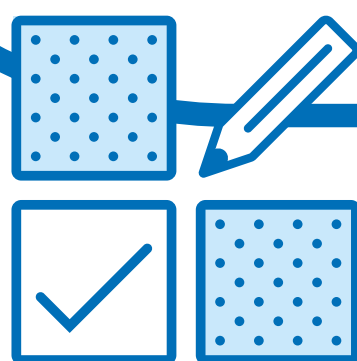


6 Reserve your home



7 Instruct a solicitor and begin your legal paperwork

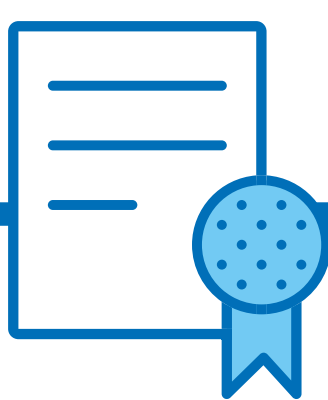
8 Complete your mortgage application



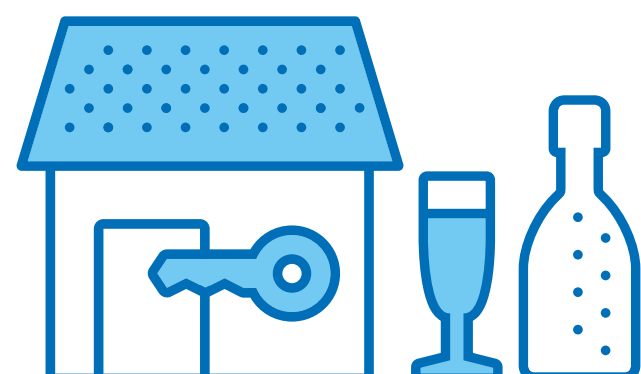
9 Once your valuation is done, receive your mortgage offer



10 Sign the Contract lease and pay your deposit



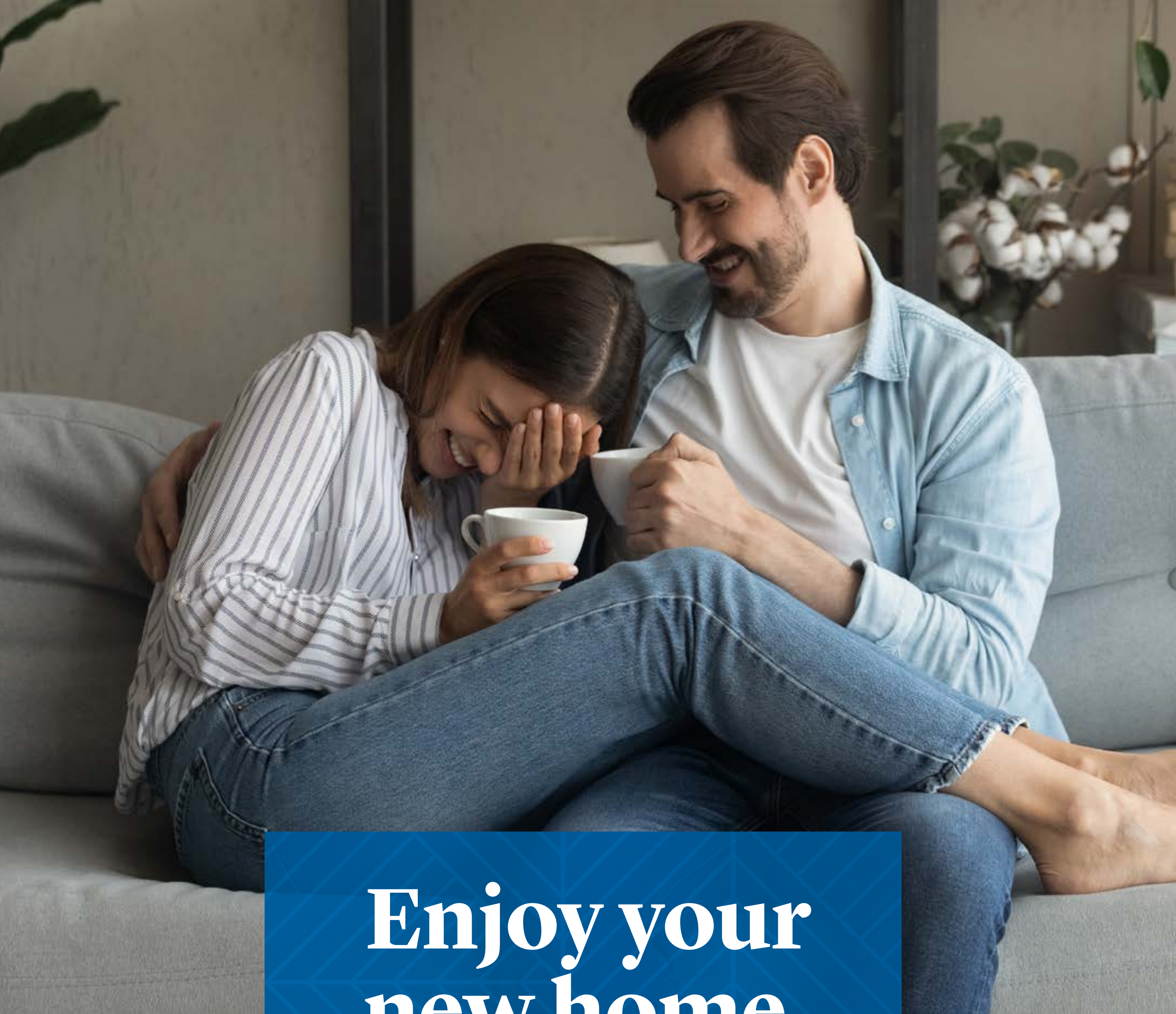
11 Exchange Contracts



12

Congratulations Complete and receive your keys and celebrate!





Enjoy your new home, your way

People come first. It's been the Legal & General way for almost 200 years.

Legal & General began in a coffee house on London's Chancery Lane back in 1836. Almost 200 years later we are investing in new homes for all ages, social groups and housing tenures.

The shortage of housing in the UK, and high deposits required to buy a property outright, mean many people can't afford a new home. That's why our aim is to better people's lives by offering opportunities to those who need a helping hand. Whether it's a first-time buyer, young

couple or growing family, it's important that everyone has a safe and secure space to call their own.

Our mission is to become the leading private affordable housing provider in the UK and to make a positive difference to the affordable housing sector. As a company, we have never stopped moving forward, but our position of being a byword for reliability, integrity and trust. is one we will never move from. That's why our key principles underpin everything we do...



Our key principles



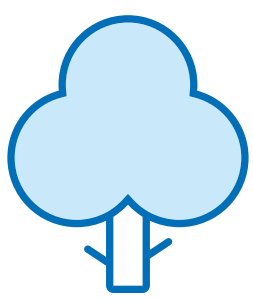
Quality

We aim to bring you the best possible experience in every aspect of your new home. That's in location, design, finishes, environment and, above all, value.



Customer Service

We're committed to providing first-class customer service, from the moment you arrive to when you open the door of your new home.



Sustainability

We work to minimise the environmental impact of what we do. That means reducing carbon emissions, using renewable materials and following sustainable design and building processes.





Lucas Place

SHAFTMOOR LANE, BIRMINGHAM B28 8SW

/// zeal.brand.door

0121 756 9136

landgah.com/lucas-place

GET MOVING TODAY

Whilst every effort has been made to ensure that the information contained in this brochure is correct, it is designed specifically as a guide.

We take every care to ensure that the correct information is provided. The company employs a policy of continuous improvement and reserves the right to alter or amend the specification at any time and is subject to change. Details are correct at the time of going to print.

The floorplans shown are for approximate measurements only. Exact layouts, dimensions, entrance and position of windows and doors may vary between plots. All measurements may vary within a tolerance of 5%. Furniture, kitchen and electrical layouts are indicative only and subject to change. Please ask your Sales Consultant for further information. Computer generated images are for illustrative purposes only – plot specific elevations may vary. LGAH-LP-030523