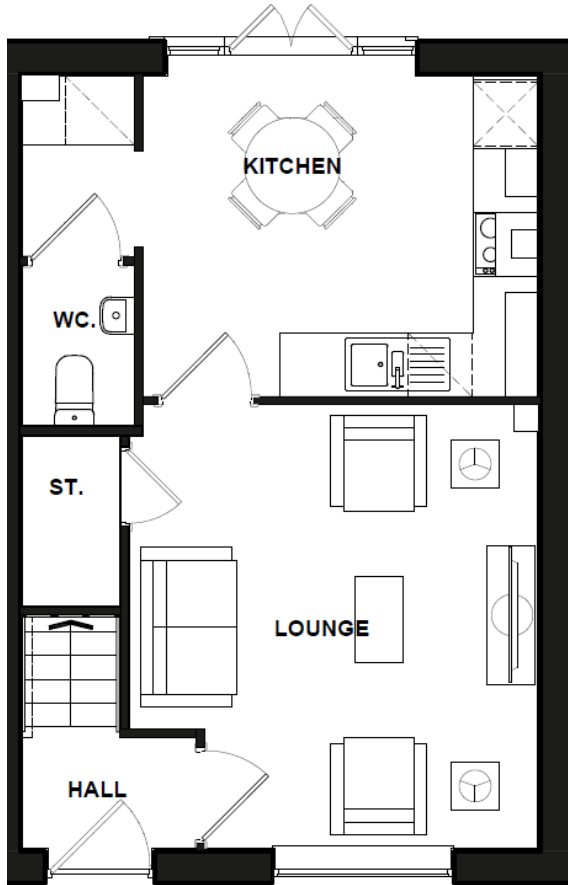


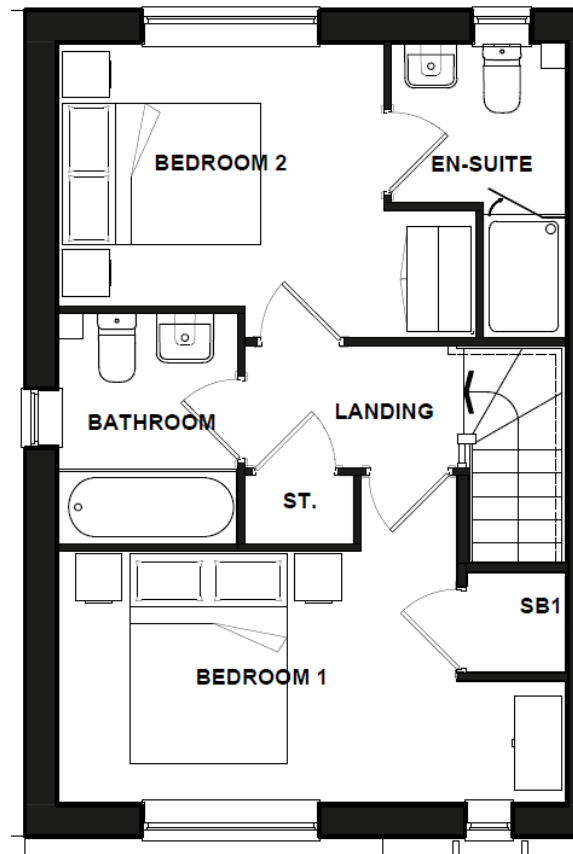
# The Poplar

## 2 Bedroom home

Mid terrace plots 155, 165 (AS)



Ground floor



First floor

### Ground floor

#### Lounge

4.16 x 3.12 m

#### Kitchen / Dining

3.70 x 3.00 m

#### WC

1.50 x 1.05 m

### First floor

#### Bedroom 1

4.82 x 3.09 m

#### En-Suite

2.88 x 1.68 m

#### Bedroom 2

3.95 x 2.50 m

#### Bathroom

2.19 x 1.72 m

Total floor area 71m<sup>2</sup>

(Approximate dimensions)

\*Window may be omitted on certain plots. Speak to sales officer for details.

Abbreviations: AS - As shown on floor plan / OPP - opposite hand to floor plan. All images used are for illustration purposes.

**Disclaimer:** These and the dimensions given for this house type and individual properties may differ. Please check with your sales officer in respect of individual properties. We give maximum dimensions within each room which includes areas of fixtures and fittings. These dimensions should not be used for carpet or flooring sizes, appliances spaces or items of furniture. All images, photographs are not intended to be relied upon to form part of, any contract unless specifically incorporated in writing into the contract.