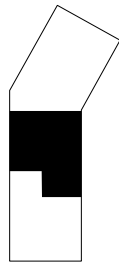




APARTMENT 10

LAWRIE PARK PLACE



THIRD FLOOR THREE BEDROOMS

LIVING ROOM
4.6M X 3.7M

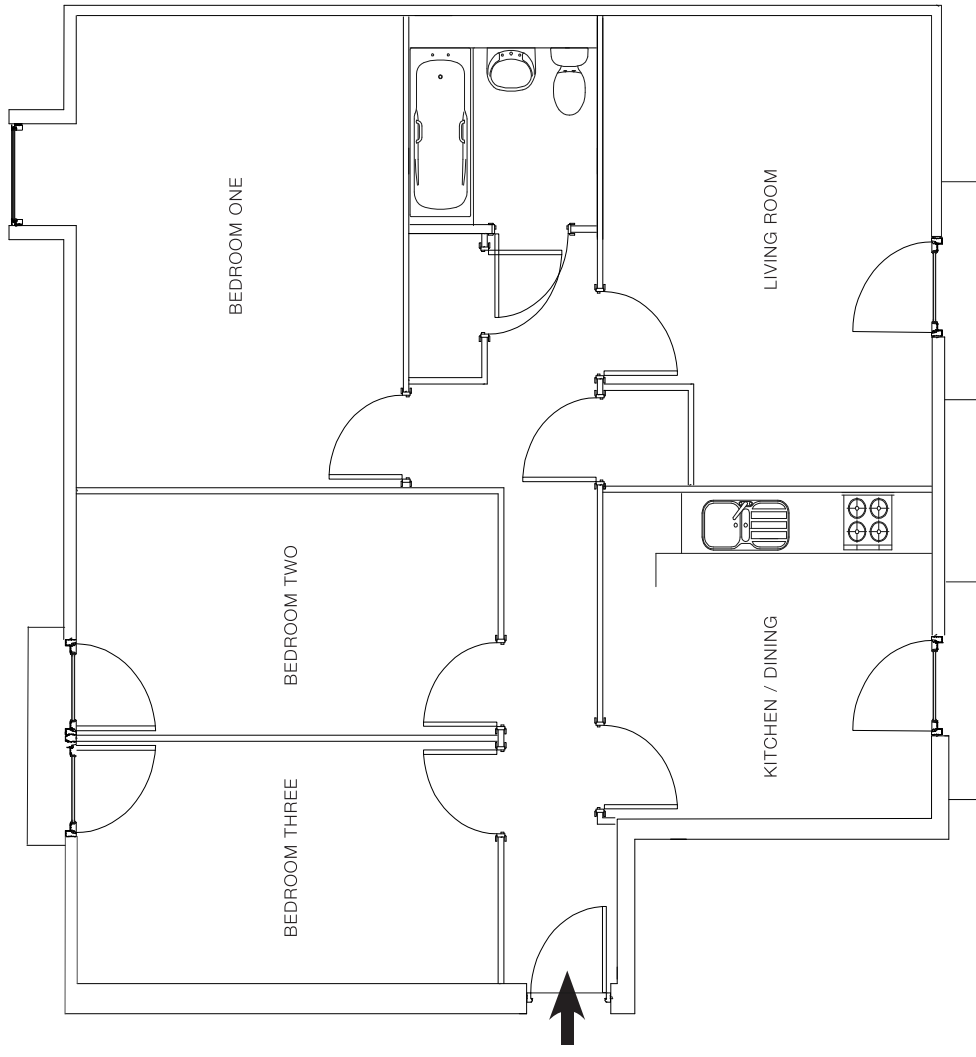
KITCHEN / DINING
3.7M X 3.2M

BEDROOM ONE
4.6M X 3.7M

BEDROOM TWO
4.8M X 2.4M

BEDROOM THREE
4.8M X 2.4M

TOTAL 76M²



Floorplans shown are indicative only. All room sizes are approximate with maximum dimensions of finished measurements. Measurements have been taken into the kitchen units and are not intended for carpet sizes or items of furniture. Measurement at widest point.

Room layouts may be subject to minor modifications. Furniture, kitchen and bathroom layouts shown are indicative only.

Moat supports the development of mixed tenure communities and is proud to provide homes for shared ownership at Lawrie Park Place. We may change the tenure of some properties subject to demand.

Moat Homes Limited is a charitable housing association.