

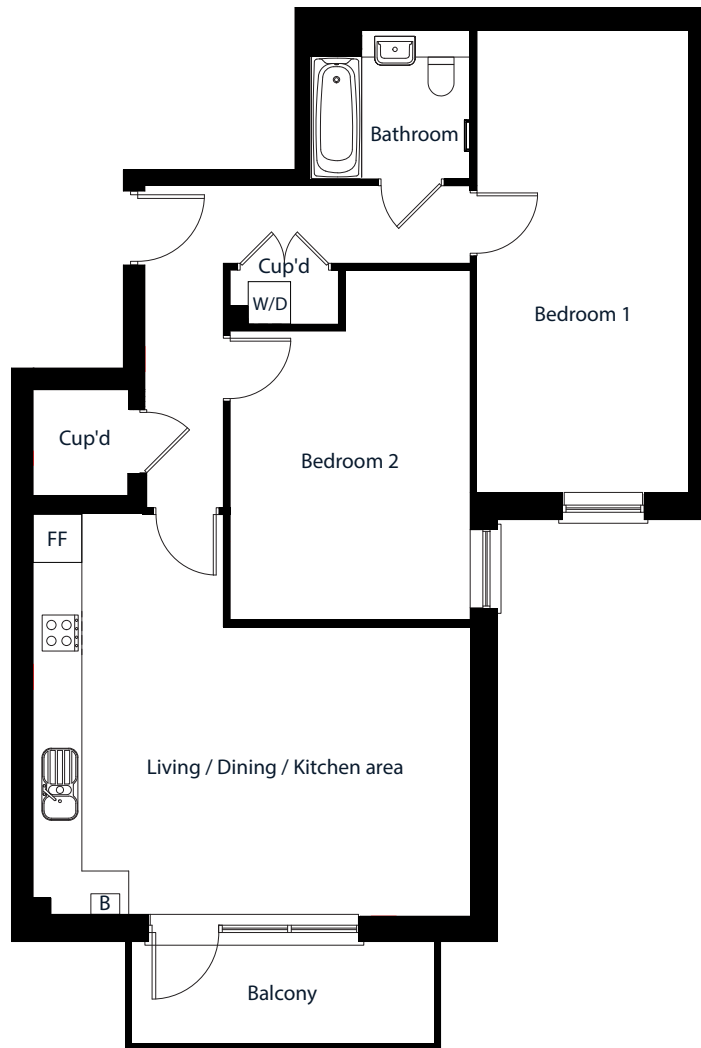
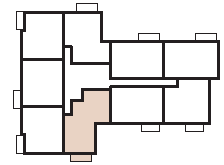
Plot
192

MOAT AT
CROSSWAYS
DARTFORD

Two bedroom apartment

55 LIBERTY COURT, STONE, DARTFORD

First Floor

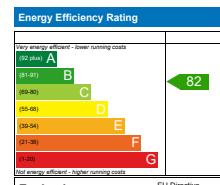


Total Internal Area 80 sq m

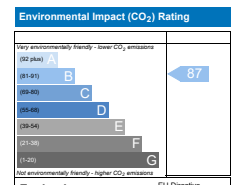
Living / Dining / Kitchen area 4.0m x 6.0m

Bedroom 1 6.4m x 2.9m

Bedroom 2 4.8m x 3.3m



The energy efficiency rating is a measure of the overall efficiency of a home. The higher the rating the more energy efficient the home is and the lower the fuel bills are likely to be.



The environmental impact rating is a measure of a home's impact on the environment in terms of carbon dioxide (CO₂) emissions. The higher the rating the less impact it has on the environment.

Cup'd = Cupboard, B = Boiler, FF = Fridge Freezer, W/D = Washer Dryer

Floor plans shown are indicative only. All room sizes are approximate with maximum dimensions of finished items of furniture. Room layouts may be subject to minor modifications. Furniture, kitchen and bathroom layouts shown are indicative only*. Measurement at widest point.

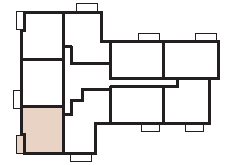
Plot
193

MOAT AT
CROSSWAYS
DARTFORD

Two bedroom apartment

56 LIBERTY COURT, STONE, DARTFORD

First Floor

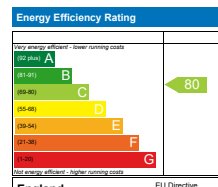


Total Internal Area 68 sq m

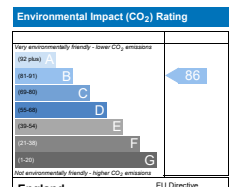
Living / Dining / Kitchen area 7.9m x 3.4m

Bedroom 1 4.4m x 2.8m

Bedroom 2 4.4m x 2.3m



The energy efficiency rating is a measure of the overall efficiency of a home. The higher the rating the more energy efficient the home is and the lower the fuel bills are likely to be.



The environmental impact rating is a measure of a home's impact on the environment in terms of carbon dioxide (CO₂) emissions. The higher the rating the less impact it has on the environment.

Cup'd = Cupboard, B = Boiler, FF = Fridge Freezer, W/D = Washer Dryer

Floor plans shown are indicative only. All room sizes are approximate with maximum dimensions of finished items of furniture. Room layouts may be subject to minor modifications. Furniture, kitchen and bathroom layouts shown are indicative only*. Measurement at widest point.

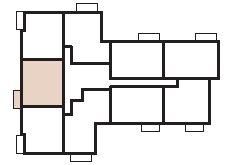
Plot
194

MOAT AT
CROSSWAYS
DARTFORD

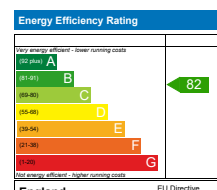
Two bedroom apartment

57 LIBERTY COURT, STONE, DARTFORD

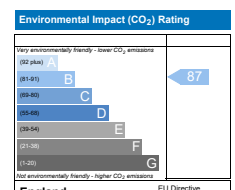
First Floor



Total Internal Area	71 sq m
Living / Dining / Kitchen area	7.9m x 3.4m
Bedroom 1	4.4m x 2.8m
Bedroom 2	4.4m x 2.3m



The energy efficiency rating is a measure of the overall efficiency of a home. The higher the rating the more energy efficient the home is and the lower the fuel bills are likely to be.



The environmental impact rating is a measure of a home's impact on the environment in terms of carbon dioxide (CO₂) emissions. The higher the rating the less impact it has on the environment.

Cup'd = Cupboard, B = Boiler, FF = Fridge Freezer, W/D = Washer Dryer

Floor plans shown are indicative only. All room sizes are approximate with maximum dimensions of finished items of furniture. Room layouts may be subject to minor modifications. Furniture, kitchen and bathroom layouts shown are indicative only*. Measurement at widest point.

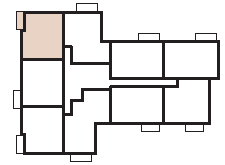
Plot
195

MOAT AT
CROSSWAYS
DARTFORD

Two bedroom apartment

58 LIBERTY COURT, STONE, DARTFORD

First Floor

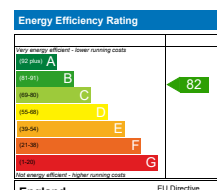


Total Internal Area 68 sq m

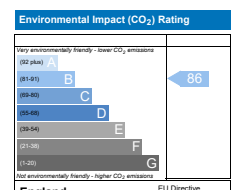
Living / Dining / Kitchen area 7.3m x 3.9m

Bedroom 1 4.4m x 2.8m

Bedroom 2 4.4m x 2.3m



England EU Directive 2002/91/EC
The energy efficiency rating is a measure of the overall efficiency of a home. The higher the rating the more energy efficient the home is and the lower the fuel bills are likely to be.



England EU Directive 2002/91/EC
The environmental impact rating is a measure of a home's impact on the environment in terms of carbon dioxide (CO₂) emissions. The higher the rating the less impact it has on the environment.

Cup'd = Cupboard, B = Boiler, FF = Fridge Freezer, W/D = Washer Dryer

Floor plans shown are indicative only. All room sizes are approximate with maximum dimensions of finished items of furniture. Room layouts may be subject to minor modifications. Furniture, kitchen and bathroom layouts shown are indicative only*. Measurement at widest point.

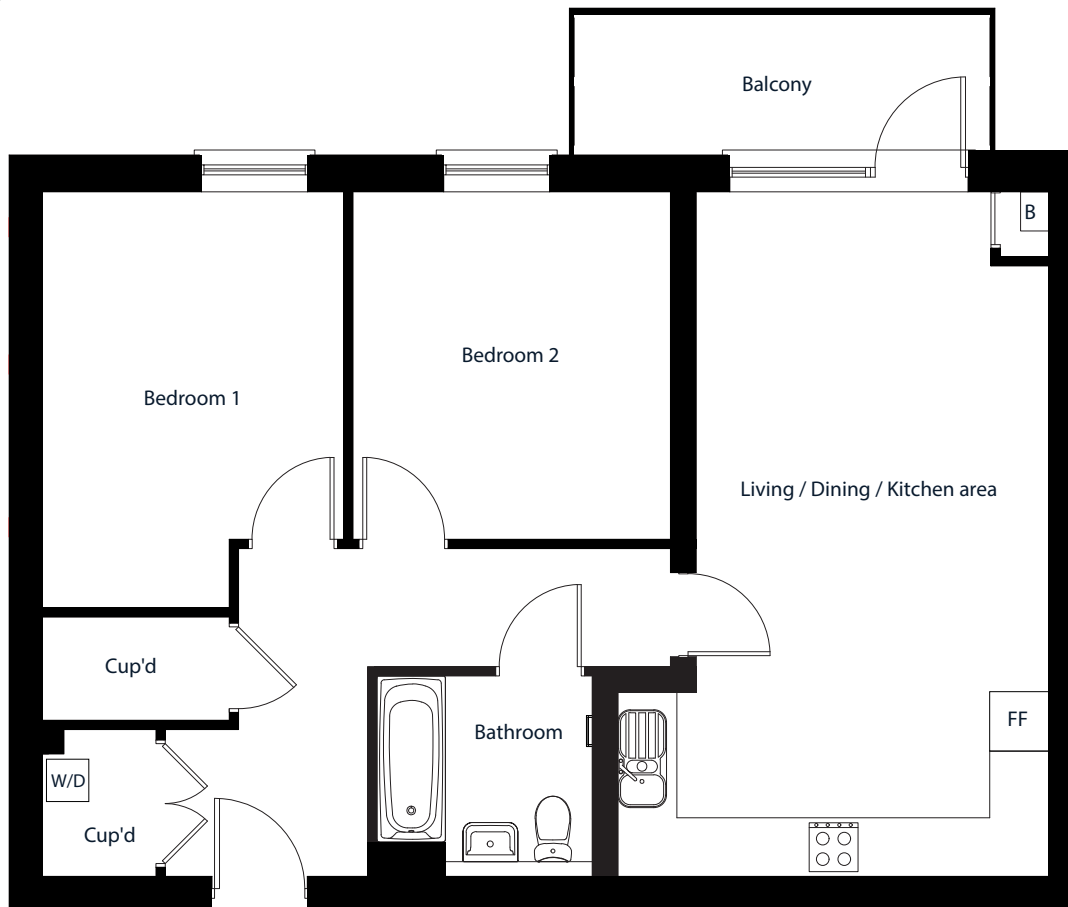
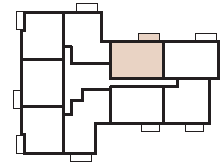
Plot
206

MOAT AT
CROSSWAYS
DARTFORD

Two bedroom apartment

60 LIBERTY COURT, STONE, DARTFORD

Second Floor

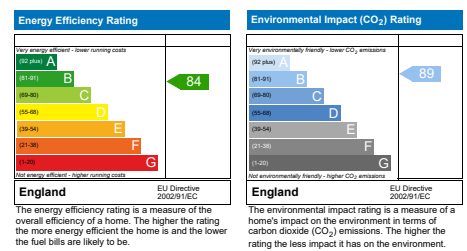


Total Internal Area 72 sq m

Living / Dining / Kitchen area 7.0m x 4.4m

Bedroom 1 3.1m x 3.5m

Bedroom 2 3.2m x 3.5m



Cup'd = Cupboard, B = Boiler, FF = Fridge Freezer, W/D = Washer Dryer

Floor plans shown are indicative only. All room sizes are approximate with maximum dimensions of finished items of furniture. Room layouts may be subject to minor modifications. Furniture, kitchen and bathroom layouts shown are indicative only*. Measurement at widest point.

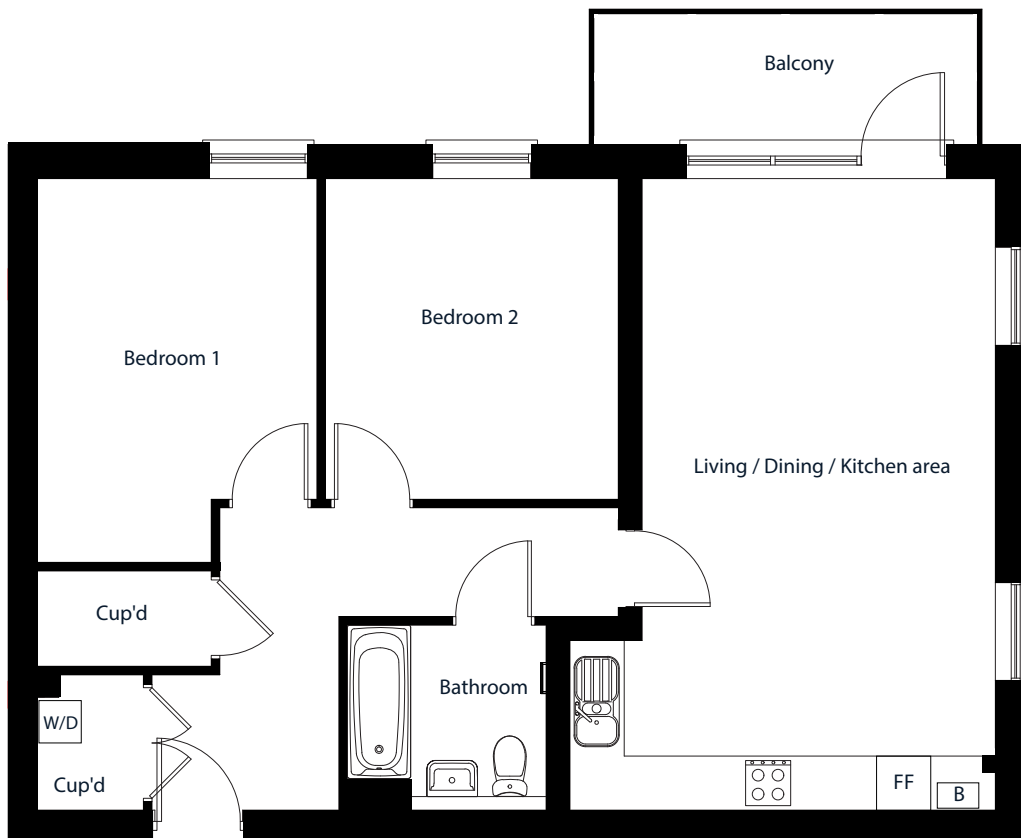
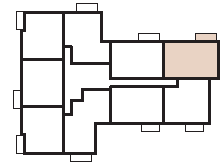
Plot
207

MOAT AT
CROSSWAYS
DARTFORD

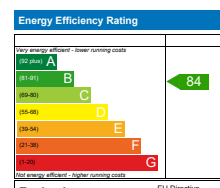
Two bedroom apartment

61 LIBERTY COURT, STONE, DARTFORD

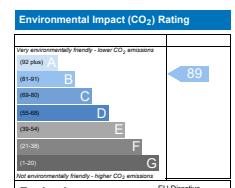
Second Floor



Total Internal Area	74 sq m
Living / Dining / Kitchen area	7.0m x 4.4m
Bedroom 1	3.1m x 3.5m
Bedroom 2	3.2m x 3.5m



The energy efficiency rating is a measure of the overall efficiency of a home. The higher the rating the more energy efficient the home is and the lower the fuel bills are likely to be.



The environmental impact rating is a measure of a home's impact on the environment in terms of carbon dioxide (CO₂) emissions. The higher the rating the less impact it has on the environment.

Cup'd = Cupboard, B = Boiler, FF = Fridge Freezer, W/D = Washer Dryer

Floor plans shown are indicative only. All room sizes are approximate with maximum dimensions of finished items of furniture. Room layouts may be subject to minor modifications. Furniture, kitchen and bathroom layouts shown are indicative only*. Measurement at widest point.

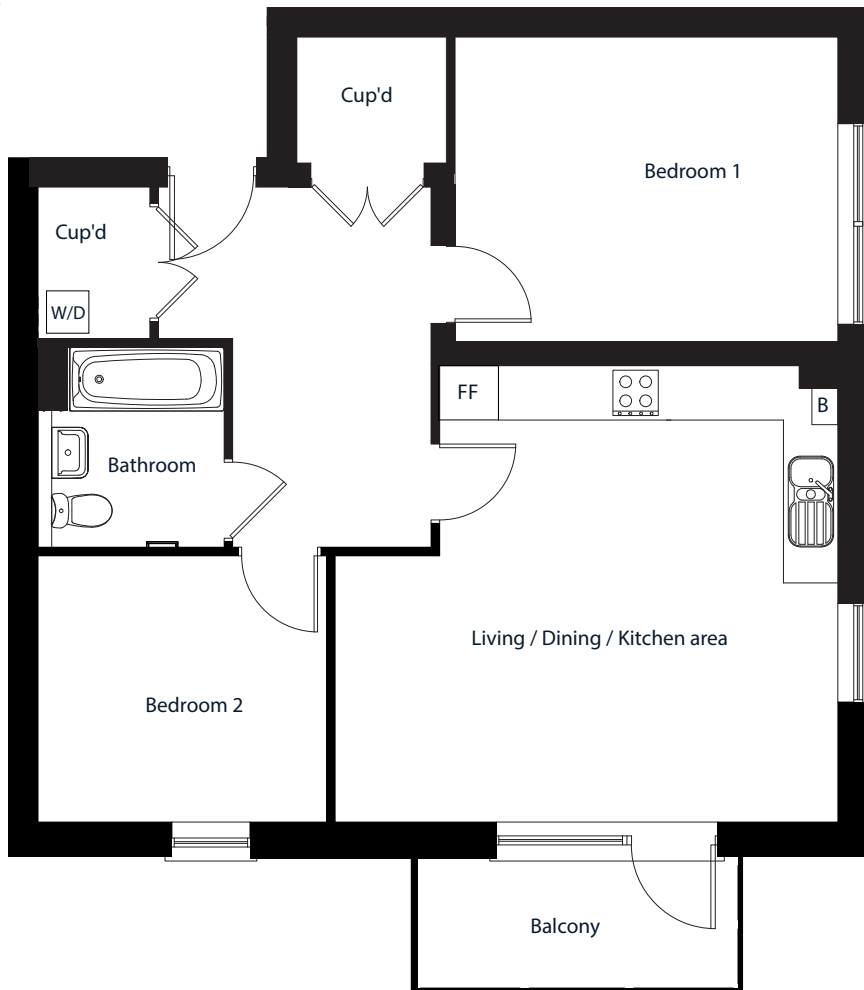
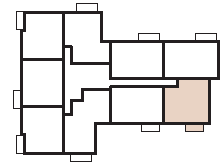
Plot
208

MOAT AT
CROSSWAYS
DARTFORD

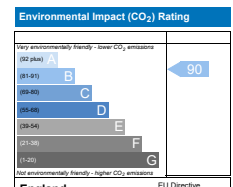
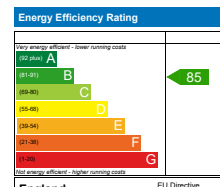
Two bedroom apartment

62 LIBERTY COURT, STONE, DARTFORD

Second Floor



Total Internal Area	71 sq m
Living / Dining / Kitchen area	5.5m x 5.0m
Bedroom 1	3.4m x 4.2m
Bedroom 2	3.2m x 2.9m



The energy efficiency rating is a measure of the overall efficiency of a home. The higher the rating the more energy efficient the home is and the lower the fuel bills are likely to be.

The environmental impact rating is a measure of a home's impact on the environment in terms of carbon dioxide (CO₂) emissions. The higher the rating the less impact it has on the environment.

Cup'd = Cupboard, B = Boiler, FF = Fridge Freezer, W/D = Washer Dryer

Floor plans shown are indicative only. All room sizes are approximate with maximum dimensions of finished items of furniture. Room layouts may be subject to minor modifications. Furniture, kitchen and bathroom layouts shown are indicative only*. Measurement at widest point.

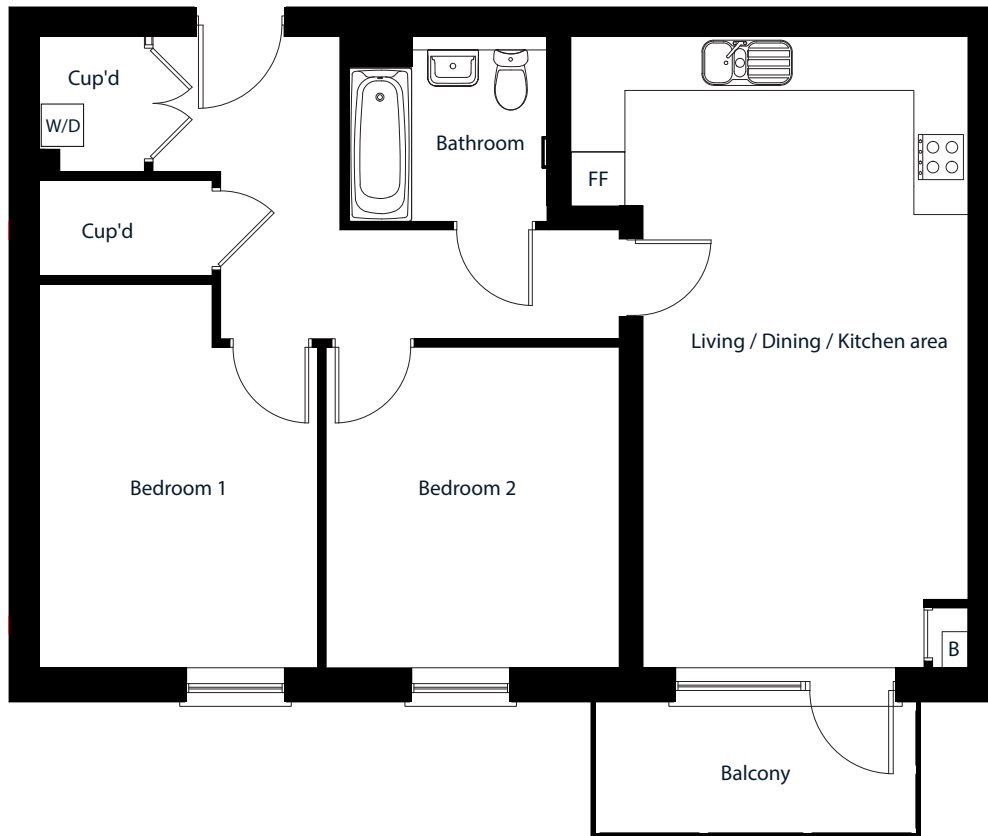
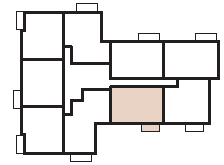
Plot
209

MOAT AT
CROSSWAYS
DARTFORD

Two bedroom apartment

63 LIBERTY COURT, STONE, DARTFORD

Second Floor

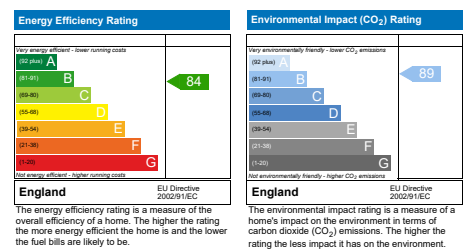


Total Internal Area 72 sq m

Living / Dining / Kitchen area 7.0m x 4.4m

Bedroom 1 3.1m x 3.5m

Bedroom 2 3.2m x 3.5m



Cup'd = Cupboard, B = Boiler, FF = Fridge Freezer, W/D = Washer Dryer

Floor plans shown are indicative only. All room sizes are approximate with maximum dimensions of finished items of furniture. Room layouts may be subject to minor modifications. Furniture, kitchen and bathroom layouts shown are indicative only*. Measurement at widest point.

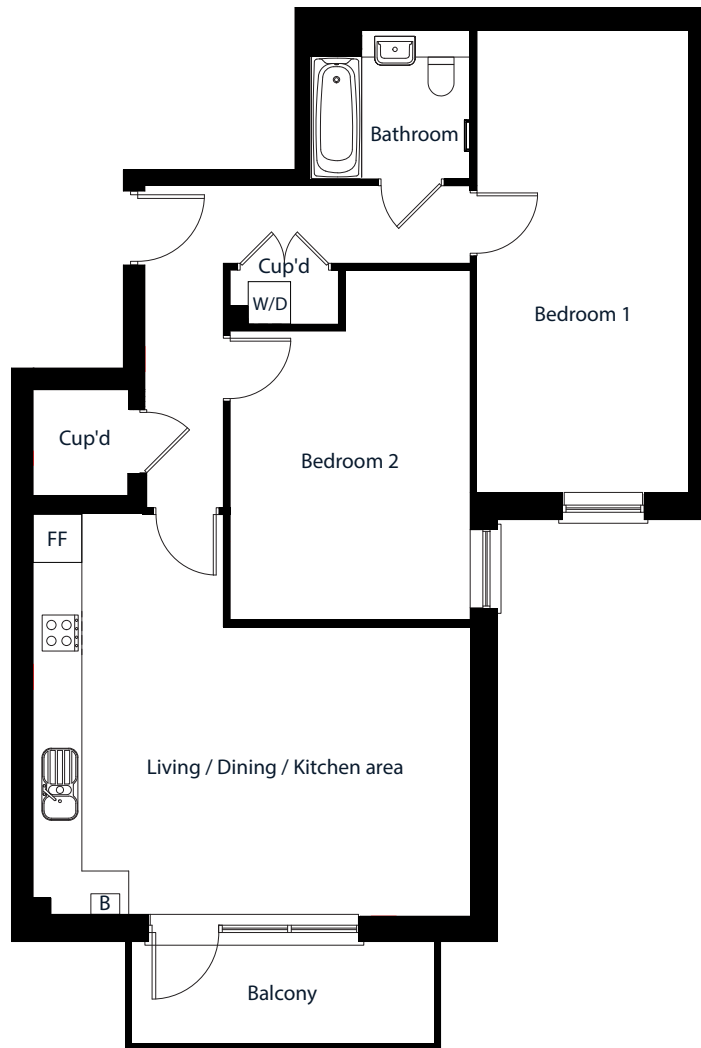
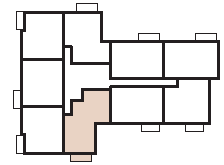
Plot
201

MOAT AT
CROSSWAYS
DARTFORD

Two bedroom apartment

64 LIBERTY COURT, STONE, DARTFORD

Second Floor

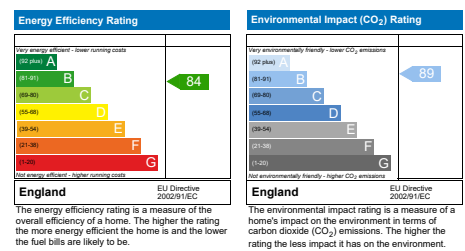


Total Internal Area 80 sq m

Living / Dining / Kitchen area 4.0m x 6.0m

Bedroom 1 6.4m x 2.9m

Bedroom 2 4.8m x 3.3m



Cup'd = Cupboard, B = Boiler, FF = Fridge Freezer, W/D = Washer Dryer

Floor plans shown are indicative only. All room sizes are approximate with maximum dimensions of finished items of furniture. Room layouts may be subject to minor modifications. Furniture, kitchen and bathroom layouts shown are indicative only*. Measurement at widest point.

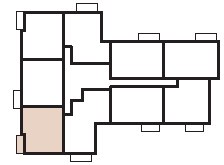
Plot
202

MOAT AT
CROSSWAYS
DARTFORD

Two bedroom apartment

65 LIBERTY COURT, STONE, DARTFORD

Second Floor

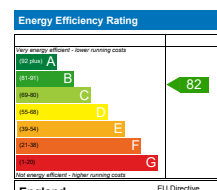


Total Internal Area 68 sq m

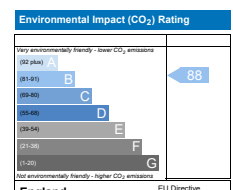
Living / Dining / Kitchen area 7.9m x 3.4m

Bedroom 1 4.4m x 2.8m

Bedroom 2 4.4m x 2.3m



The energy efficiency rating is a measure of the overall efficiency of a home. The higher the rating the more energy efficient the home is and the lower the fuel bills are likely to be.



The environmental impact rating is a measure of a home's impact on the environment in terms of carbon dioxide (CO₂) emissions. The higher the rating the less impact it has on the environment.

Cup'd = Cupboard, B = Boiler, FF = Fridge Freezer, W/D = Washer Dryer

Floor plans shown are indicative only. All room sizes are approximate with maximum dimensions of finished items of furniture. Room layouts may be subject to minor modifications. Furniture, kitchen and bathroom layouts shown are indicative only*. Measurement at widest point.

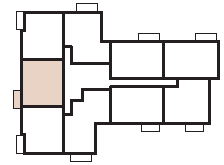
Plot
203

MOAT AT
CROSSWAYS
DARTFORD

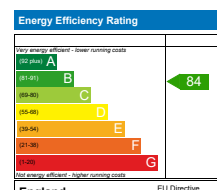
Two bedroom apartment

66 LIBERTY COURT, STONE, DARTFORD

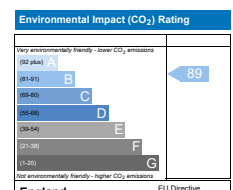
Second Floor



Total Internal Area	71 sq m
Living / Dining / Kitchen area	7.9m x 3.4m
Bedroom 1	4.4m x 2.8m
Bedroom 2	4.4m x 2.3m



The energy efficiency rating is a measure of the overall efficiency of a home. The higher the rating the more energy efficient the home is and the lower the fuel bills are likely to be.



The environmental impact rating is a measure of a home's impact on the environment in terms of carbon dioxide (CO₂) emissions. The higher the rating the less impact it has on the environment.

Cup'd = Cupboard, B = Boiler, FF = Fridge Freezer, W/D = Washer Dryer

Floor plans shown are indicative only. All room sizes are approximate with maximum dimensions of finished items of furniture. Room layouts may be subject to minor modifications. Furniture, kitchen and bathroom layouts shown are indicative only*. Measurement at widest point.

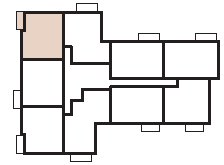
Plot
204

MOAT AT
CROSSWAYS
DARTFORD

Two bedroom apartment

67 LIBERTY COURT, STONE, DARTFORD

Second Floor

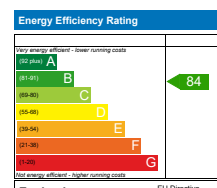


Total Internal Area 68 sq m

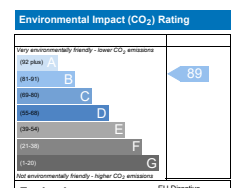
Living / Dining / Kitchen area 7.3m x 3.9m

Bedroom 1 4.4m x 2.8m

Bedroom 2 4.4m x 2.3m



The energy efficiency rating is a measure of the overall efficiency of a home. The higher the rating the more energy efficient the home is and the lower the fuel bills are likely to be.



The environmental impact rating is a measure of a home's impact on the environment in terms of carbon dioxide (CO₂) emissions. The higher the rating the less impact it has on the environment.

Cup'd = Cupboard, B = Boiler, FF = Fridge Freezer, W/D = Washer Dryer

Floor plans shown are indicative only. All room sizes are approximate with maximum dimensions of finished items of furniture. Room layouts may be subject to minor modifications. Furniture, kitchen and bathroom layouts shown are indicative only*. Measurement at widest point.

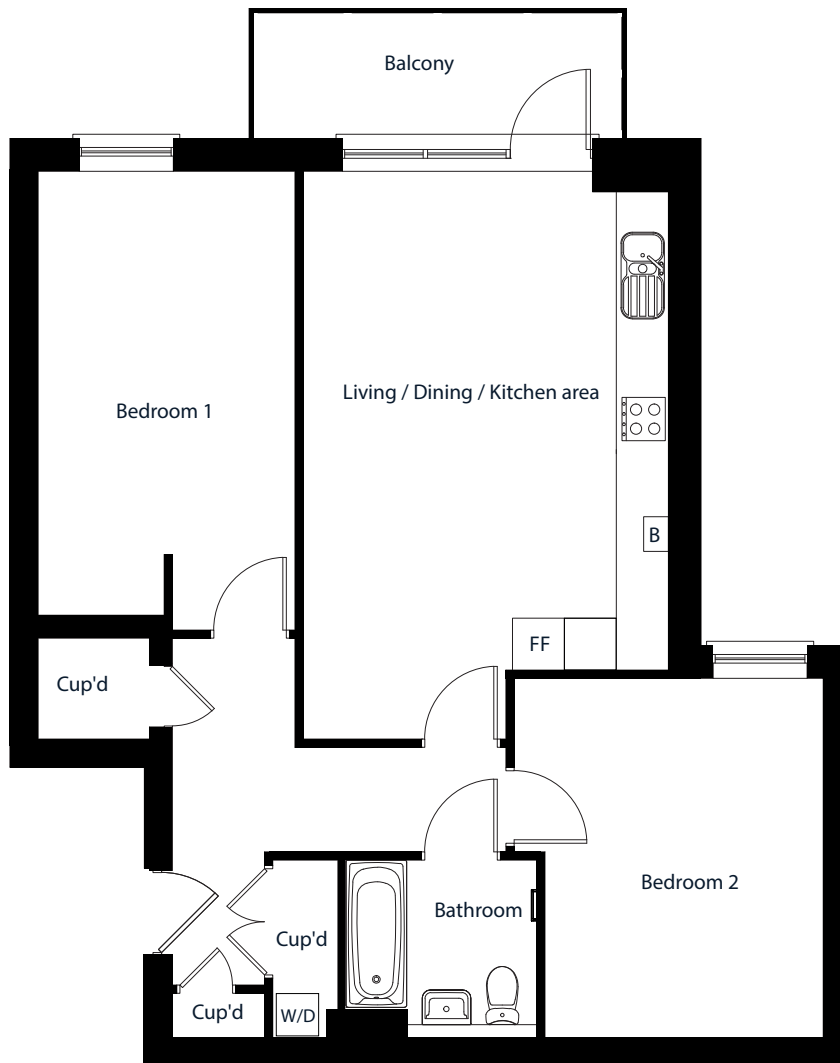
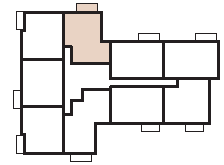
Plot
205

MOAT AT
CROSSWAYS
DARTFORD

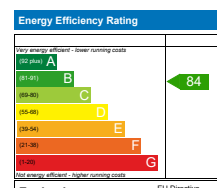
Two bedroom apartment

68 LIBERTY COURT, STONE, DARTFORD

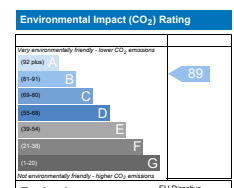
Second Floor



Total Internal Area	74 sq m
Living / Dining / Kitchen area	6.5m x 4.2m
Bedroom 1	5.1m x 3.0m
Bedroom 2	3.6m x 4.1m



The energy efficiency rating is a measure of the overall efficiency of a home. The higher the rating the more energy efficient the home is and the lower the fuel bills are likely to be.



The environmental impact rating is a measure of a home's impact on the environment in terms of carbon dioxide (CO₂) emissions. The higher the rating the less impact it has on the environment.

Cup'd = Cupboard, B = Boiler, FF = Fridge Freezer, W/D = Washer Dryer

Floor plans shown are indicative only. All room sizes are approximate with maximum dimensions of finished items of furniture. Room layouts may be subject to minor modifications. Furniture, kitchen and bathroom layouts shown are indicative only*. Measurement at widest point.

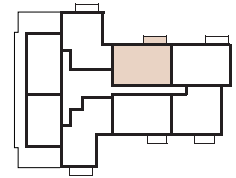
Plot
214

MOAT AT
CROSSWAYS
DARTFORD

Two bedroom apartment

69 LIBERTY COURT, STONE, DARTFORD

Third Floor

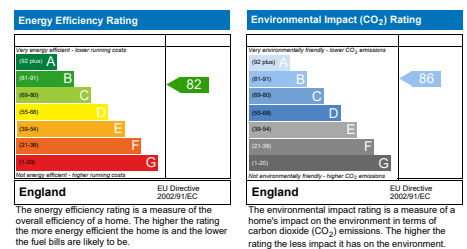


Total Internal Area 72 sq m

Living / Dining / Kitchen area 7.0m x 4.4m

Bedroom 1 3.1m x 3.5m

Bedroom 2 3.2m x 3.5m



Cup'd = Cupboard, B = Boiler, FF = Fridge Freezer, W/D = Washer Dryer

Floor plans shown are indicative only. All room sizes are approximate with maximum dimensions of finished items of furniture. Room layouts may be subject to minor modifications. Furniture, kitchen and bathroom layouts shown are indicative only*. Measurement at widest point.

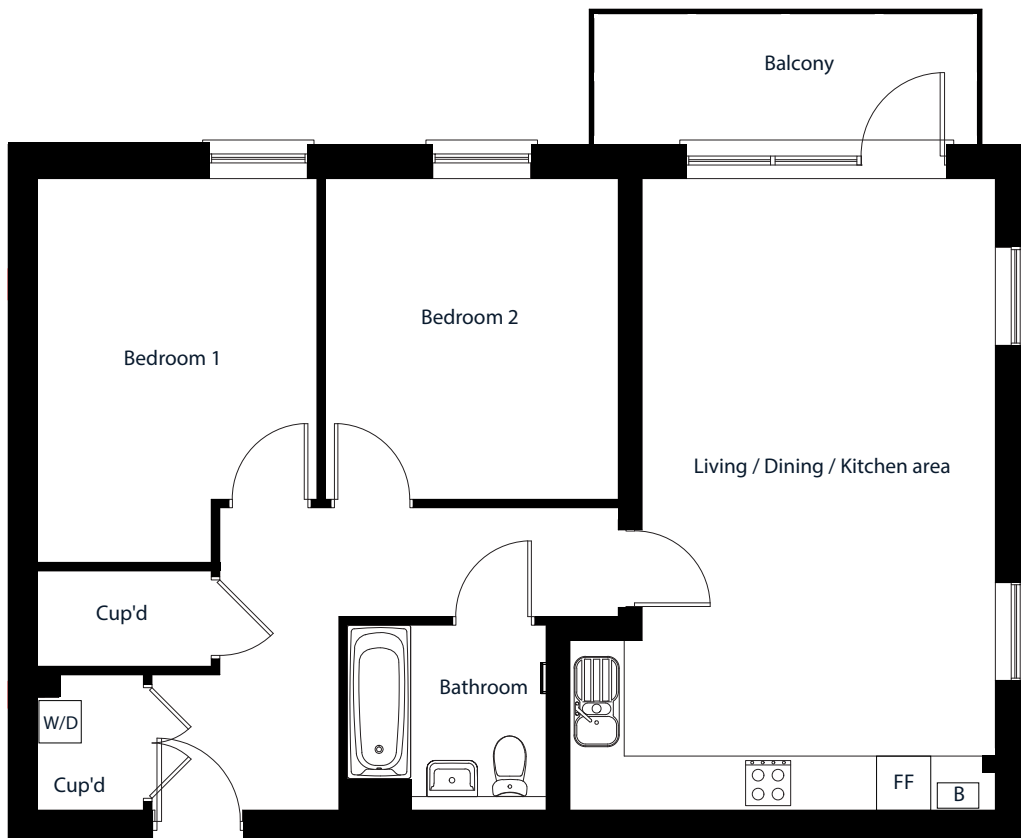
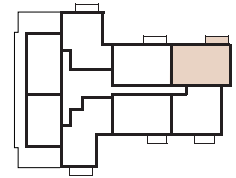
Plot
215

MOAT AT
CROSSWAYS
DARTFORD

Two bedroom apartment

70 LIBERTY COURT, STONE, DARTFORD

Third Floor

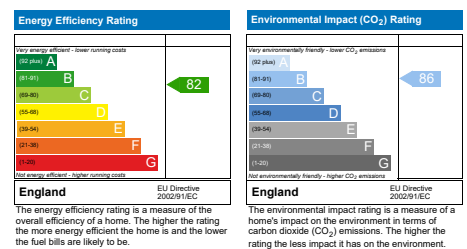


Total Internal Area 74 sq m

Living / Dining / Kitchen area 7.0m x 4.4m

Bedroom 1 3.1m x 3.5m

Bedroom 2 3.2m x 3.5m



Cup'd = Cupboard, B = Boiler, FF = Fridge Freezer, W/D = Washer Dryer

Floor plans shown are indicative only. All room sizes are approximate with maximum dimensions of finished items of furniture. Room layouts may be subject to minor modifications. Furniture, kitchen and bathroom layouts shown are indicative only*. Measurement at widest point.

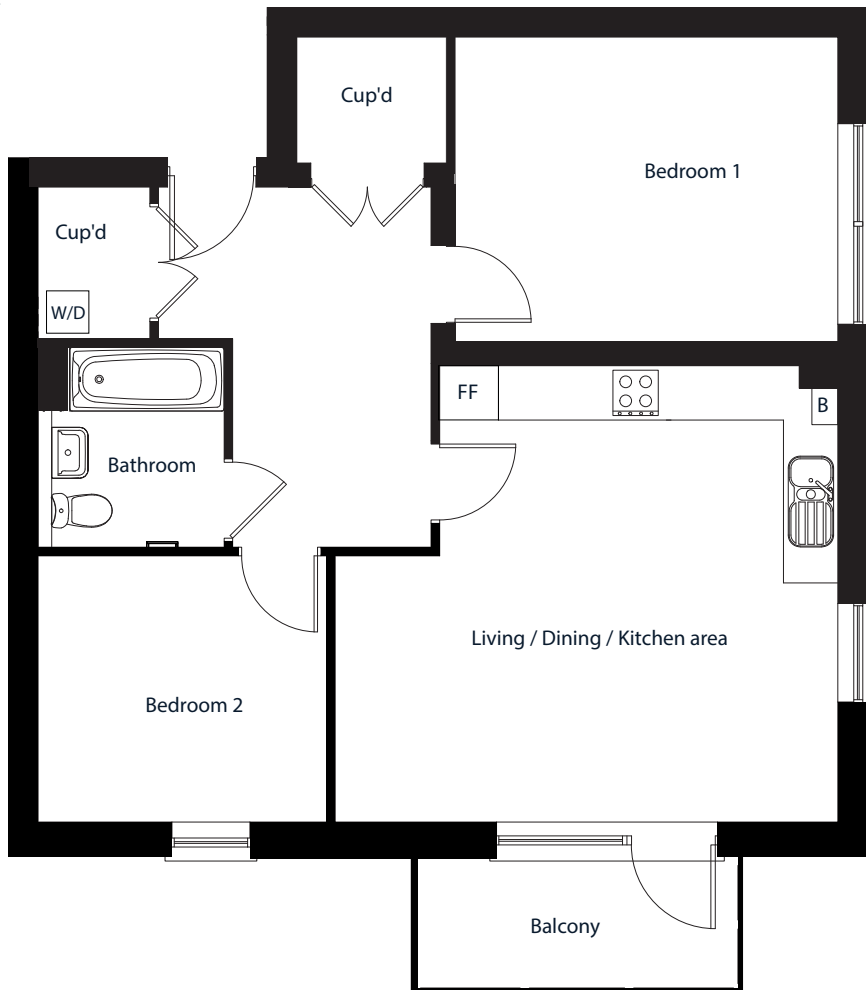
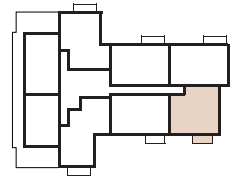
Plot
216

MOAT AT
CROSSWAYS
DARTFORD

Two bedroom apartment

71 LIBERTY COURT, STONE, DARTFORD

Third Floor

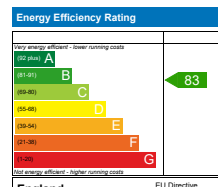


Total Internal Area 71 sq m

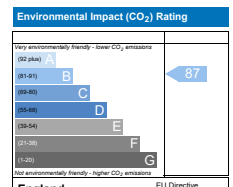
Living / Dining / Kitchen area 5.5m x 5.0m

Bedroom 1 3.4m x 4.2m

Bedroom 2 3.2m x 2.9m



The energy efficiency rating is a measure of the overall efficiency of a home. The higher the rating the more energy efficient the home is and the lower the fuel bills are likely to be.



The environmental impact rating is a measure of a home's impact on the environment in terms of carbon dioxide (CO₂) emissions. The higher the rating the less impact it has on the environment.

Cup'd = Cupboard, B = Boiler, FF = Fridge Freezer, W/D = Washer Dryer

Floor plans shown are indicative only. All room sizes are approximate with maximum dimensions of finished items of furniture. Room layouts may be subject to minor modifications. Furniture, kitchen and bathroom layouts shown are indicative only*. Measurement at widest point.

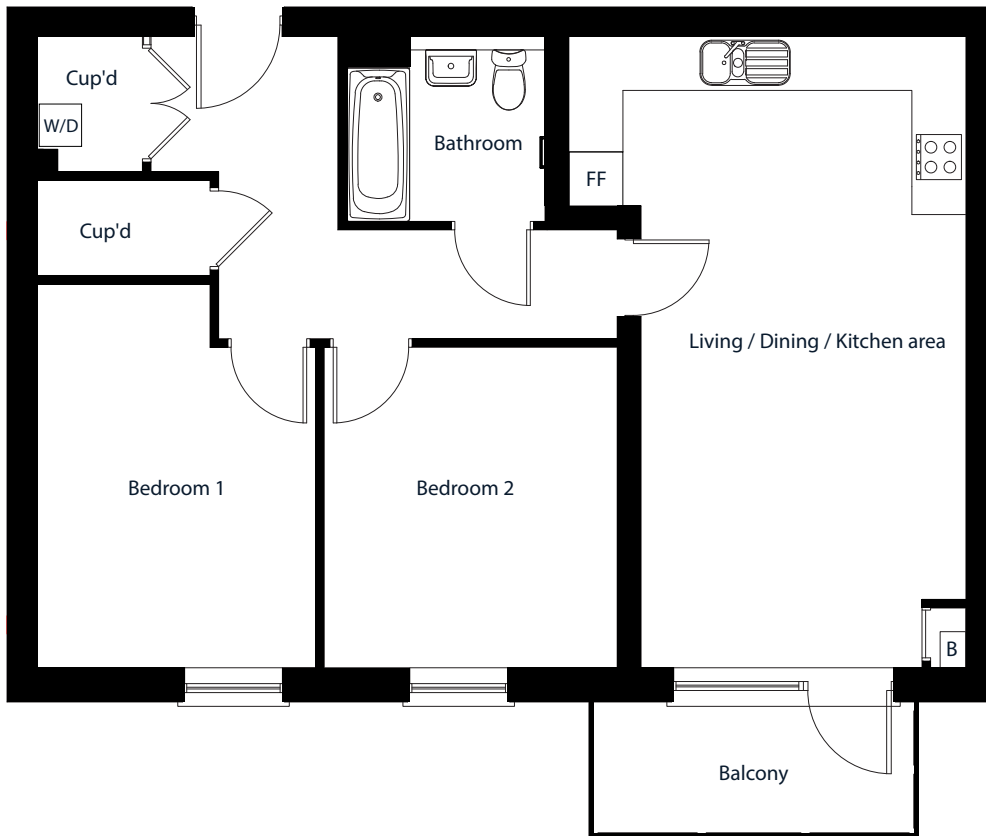
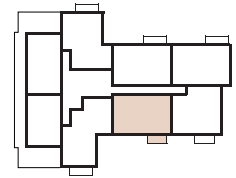
Plot
217

MOAT AT
CROSSWAYS
DARTFORD

Two bedroom apartment

72 LIBERTY COURT, STONE, DARTFORD

Third Floor

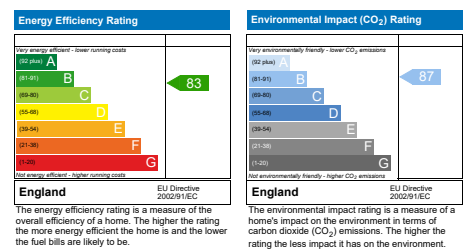


Total Internal Area 72 sq m

Living / Dining / Kitchen area 7.0m x 4.4m

Bedroom 1 3.1m x 3.5m

Bedroom 2 3.2m x 3.5m



Cup'd = Cupboard, B = Boiler, FF = Fridge Freezer, W/D = Washer Dryer

Floor plans shown are indicative only. All room sizes are approximate with maximum dimensions of finished items of furniture. Room layouts may be subject to minor modifications. Furniture, kitchen and bathroom layouts shown are indicative only*. Measurement at widest point.

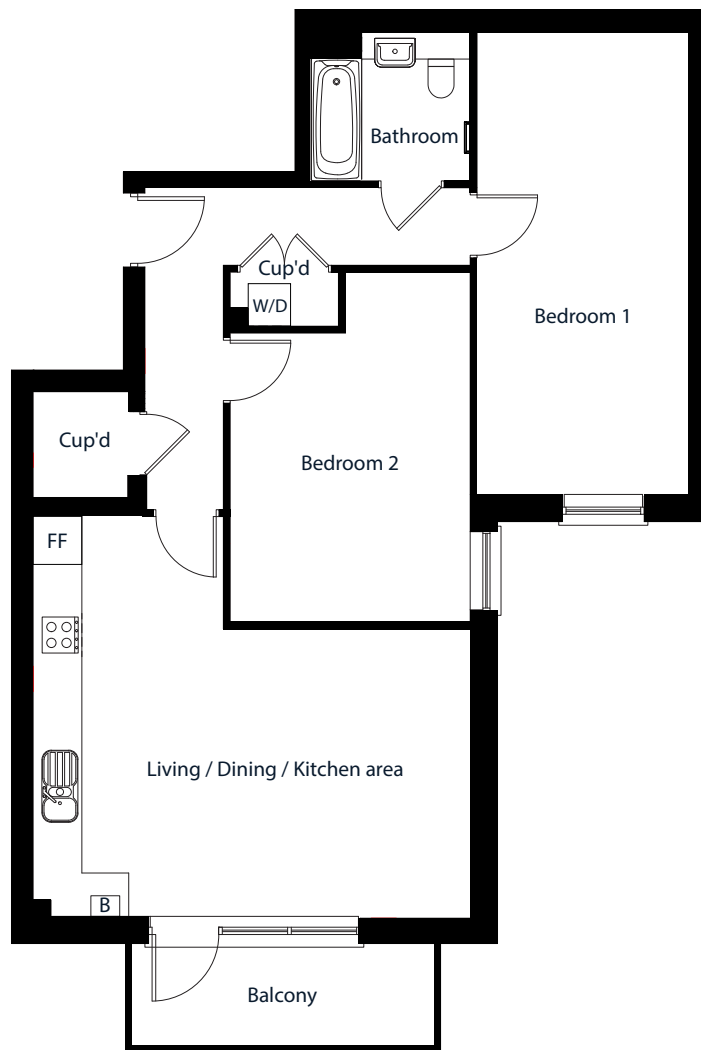
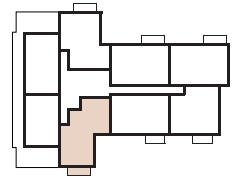
Plot
210

MOAT AT
CROSSWAYS
DARTFORD

Two bedroom apartment

73 LIBERTY COURT, STONE, DARTFORD

Third Floor

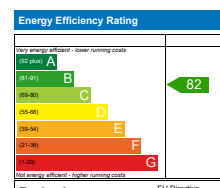


Total Internal Area 80 sq m

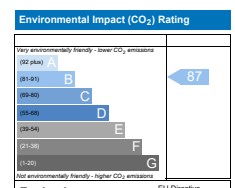
Living / Dining / Kitchen area 4.0m x 6.0m

Bedroom 1 6.4m x 2.9m

Bedroom 2 4.8m x 3.3m



The energy efficiency rating is a measure of the overall efficiency of a home. The higher the rating the more energy efficient the home is and the lower the fuel bills are likely to be.



The environmental impact rating is a measure of a home's impact on the environment in terms of carbon dioxide (CO₂) emissions. The higher the rating the less impact it has on the environment.

Cup'd = Cupboard, B = Boiler, FF = Fridge Freezer, W/D = Washer Dryer

Floor plans shown are indicative only. All room sizes are approximate with maximum dimensions of finished items of furniture. Room layouts may be subject to minor modifications. Furniture, kitchen and bathroom layouts shown are indicative only*. Measurement at widest point.

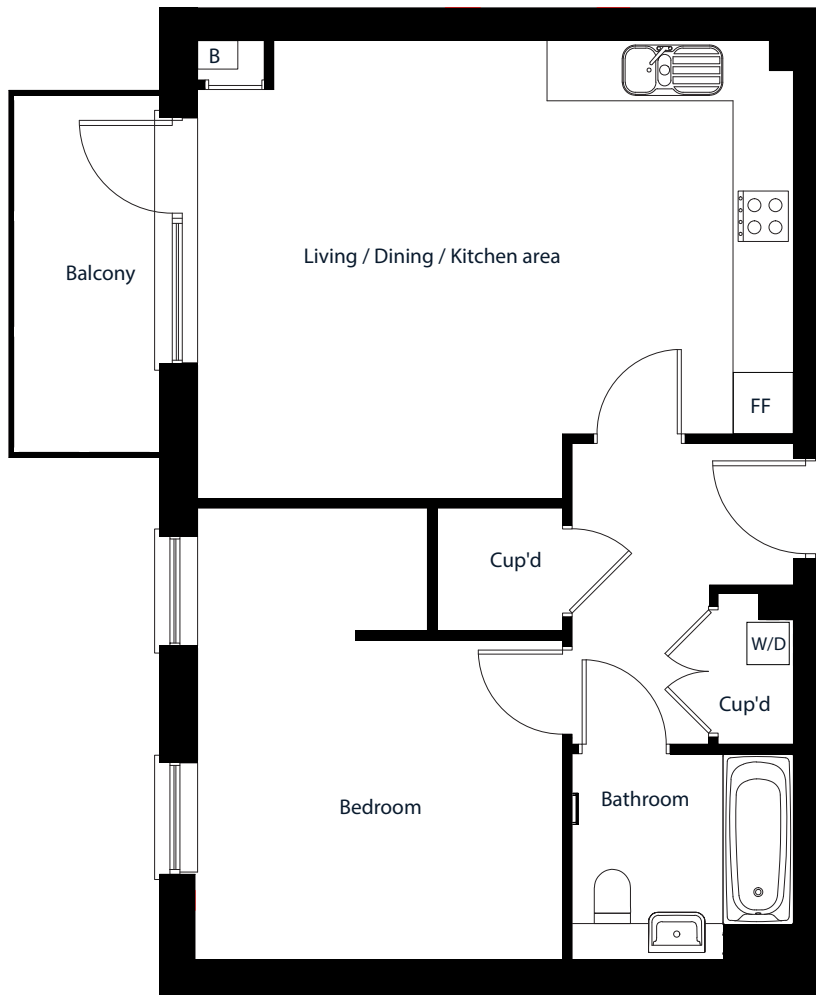
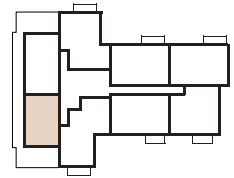
Plot
211

MOAT AT
CROSSWAYS
DARTFORD

One bedroom apartment

74 LIBERTY COURT, STONE, DARTFORD

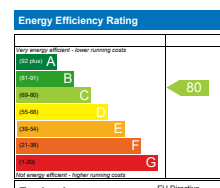
Third Floor



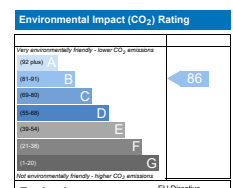
Total Internal Area 54 sq m

Living / Dining / Kitchen area 5.9m x 4.5m

Bedroom 4.5m x 3.6m



The energy efficiency rating is a measure of the overall efficiency of a home. The higher the rating the more energy efficient the home is and the lower the fuel bills are likely to be.



The environmental impact rating is a measure of a home's impact on the environment in terms of carbon dioxide (CO₂) emissions. The higher the rating the less impact it has on the environment.

Cup'd = Cupboard, B = Boiler, FF = Fridge Freezer, W/D = Washer Dryer

Floor plans shown are indicative only. All room sizes are approximate with maximum dimensions of finished items of furniture. Room layouts may be subject to minor modifications. Furniture, kitchen and bathroom layouts shown are indicative only*. Measurement at widest point.

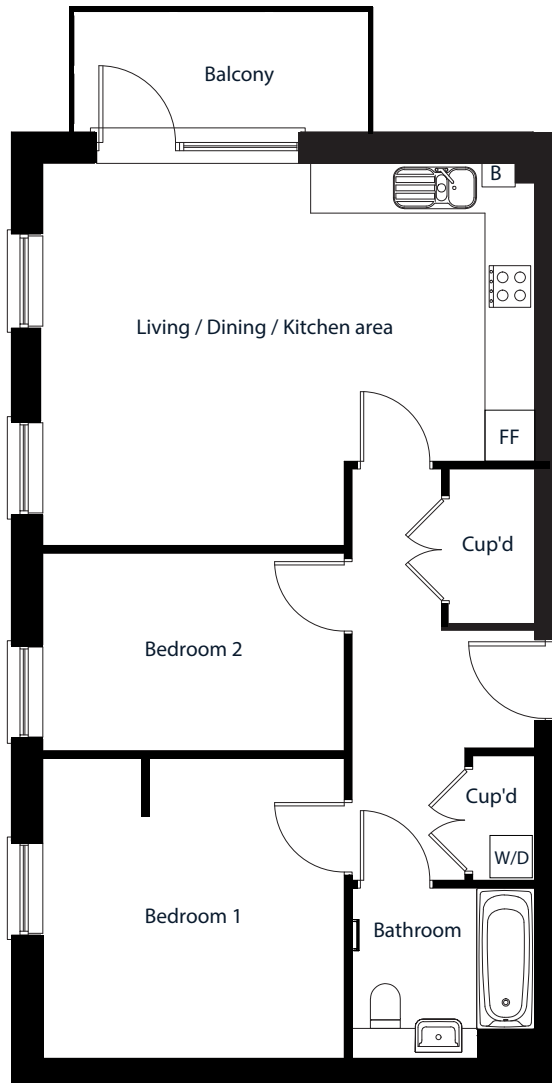
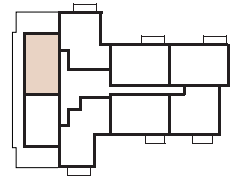
Plot
212

MOAT AT
CROSSWAYS
DARTFORD

Two bedroom apartment

75 LIBERTY COURT, STONE, DARTFORD

Third Floor

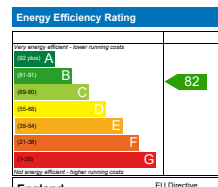


Total Internal Area 63 sq m

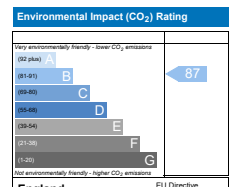
Living / Dining / Kitchen area 5.9m x 4.6m

Bedroom 1 3.6m x 3.6m

Bedroom 2 3.6m x 2.4m



England
The energy efficiency rating is a measure of the overall efficiency of a home. The higher the rating the more energy efficient the home is and the lower the fuel bills are likely to be.



England
The environmental impact rating is a measure of a home's impact on the environment in terms of carbon dioxide (CO₂) emissions. The higher the rating the less impact it has on the environment.

Cup'd = Cupboard, B = Boiler, FF = Fridge Freezer, W/D = Washer Dryer

Floor plans shown are indicative only. All room sizes are approximate with maximum dimensions of finished items of furniture. Room layouts may be subject to minor modifications. Furniture, kitchen and bathroom layouts shown are indicative only*. Measurement at widest point.

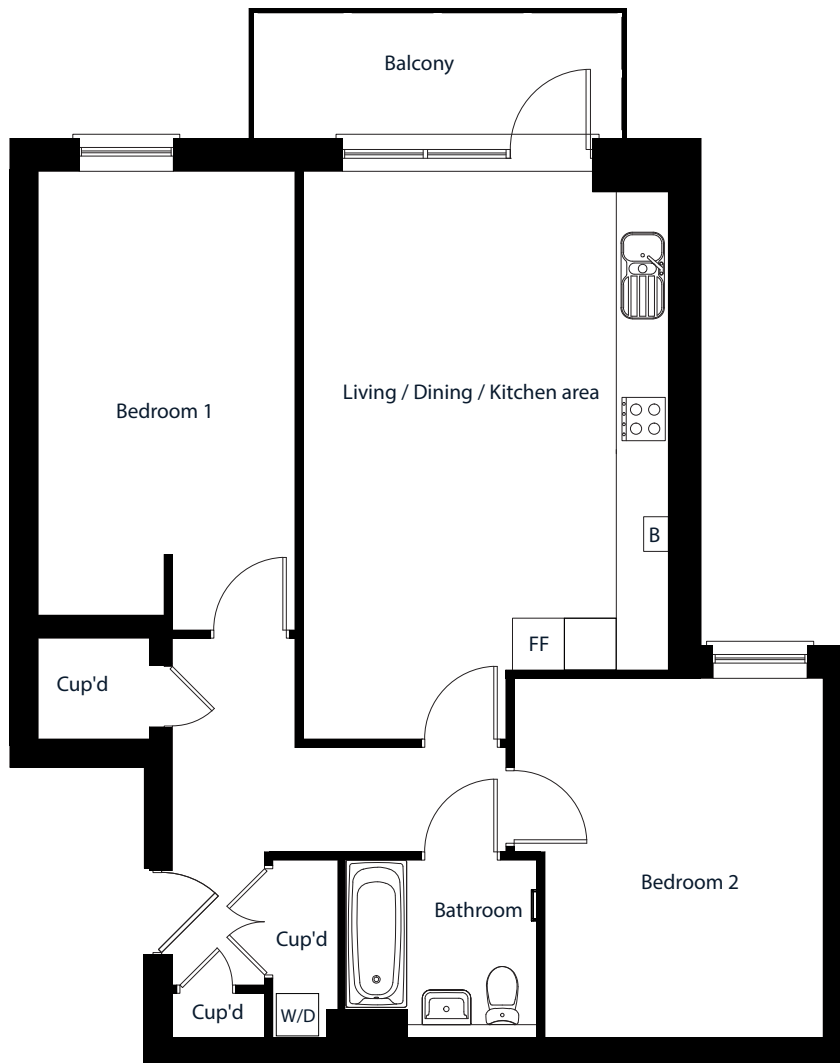
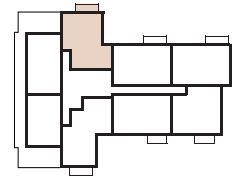
Plot
213

MOAT AT
CROSSWAYS
DARTFORD

Two bedroom apartment

76 LIBERTY COURT, STONE, DARTFORD

Third Floor

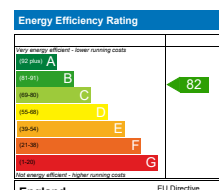


Total Internal Area 74 sq m

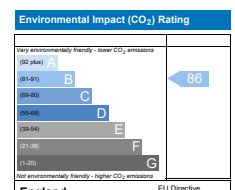
Living / Dining / Kitchen area 6.5m x 4.2m

Bedroom 1 5.1m x 3.0m

Bedroom 2 3.6m x 4.1m



England
The energy efficiency rating is a measure of the overall efficiency of a home. The higher the rating the more energy efficient the home is and the lower the fuel bills are likely to be.



England
The environmental impact rating is a measure of a home's impact on the environment in terms of carbon dioxide (CO₂) emissions. The higher the rating the less impact it has on the environment.

Cup'd = Cupboard, B = Boiler, FF = Fridge Freezer, W/D = Washer Dryer

Floor plans shown are indicative only. All room sizes are approximate with maximum dimensions of finished items of furniture. Room layouts may be subject to minor modifications. Furniture, kitchen and bathroom layouts shown are indicative only*. Measurement at widest point.