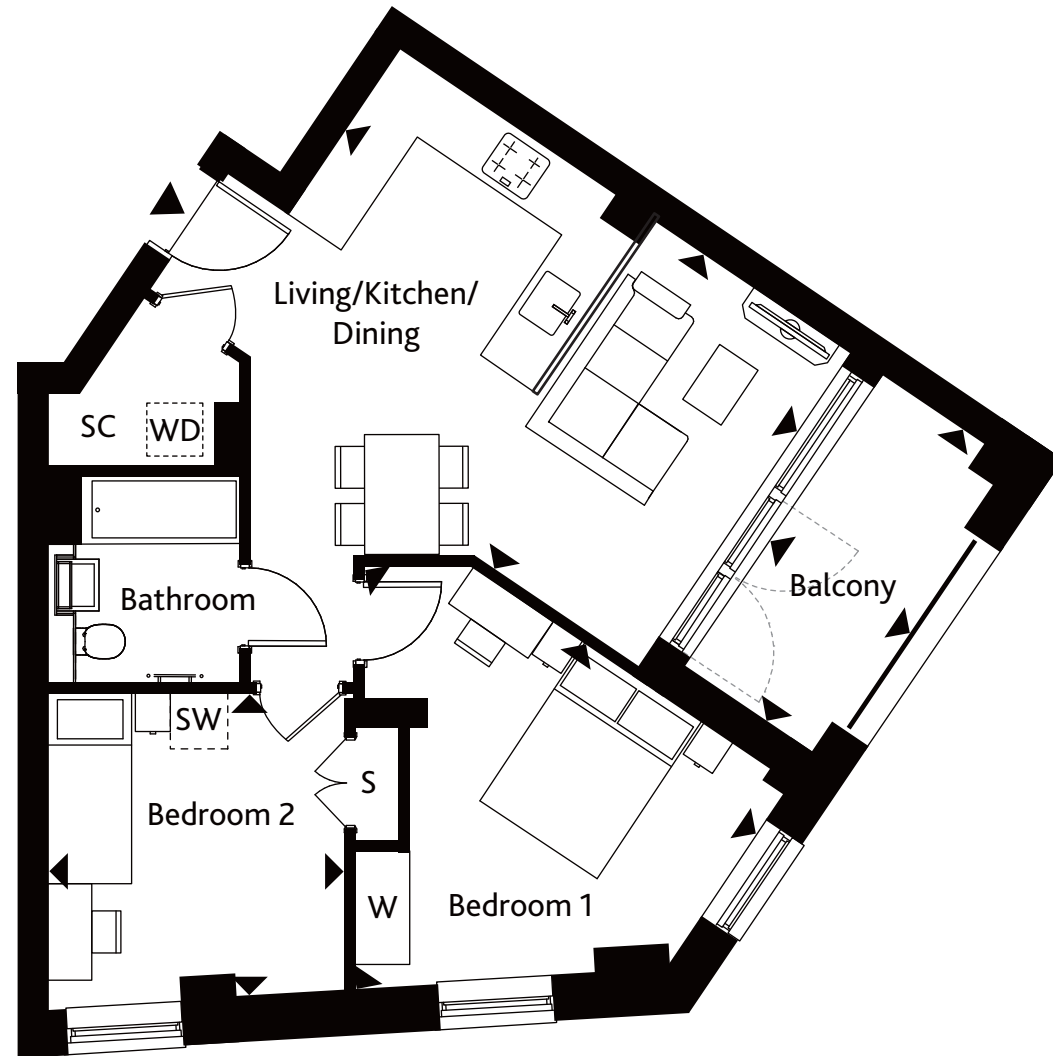
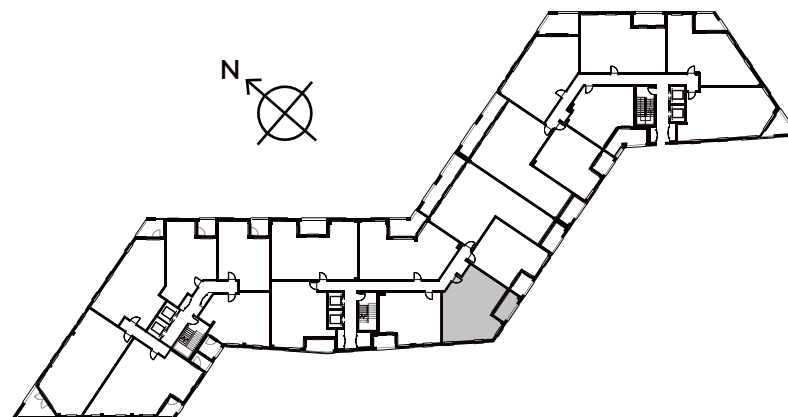


APARTMENT 206

BANKSIDE 2ND FLOOR



| | | |
|-----------------------|---------------|----------------|
| Living/Kitchen/Dining | 5.78m x 4.02m | 18'11" x 13'2" |
| Bedroom 1 | 4.99m x 4.39m | 16'4" x 14'5" |
| Bedroom 2 | 3.20m x 3.16m | 10'6" x 10'4" |
| Balcony | 3.67m x 1.78m | 12'0" x 5'10" |



Ceiling heights may vary with areas below 2.3 meters, please speak to a member of the sales team for more information.

Floorplans shown for Square Roots Lewisham are for approximate measurements only. Exact layouts and sizes may vary. All measurements may vary within a tolerance of +/-50mm. The dimensions are not intended to be used for carpet sizes, appliance sizes or items of furniture. Furniture layouts are indicative only. Kitchen layout indicative only. Please ask Sales Consultant for further information.