



21 Roman Fields

Chilton, OX11 0UF

50% Shared ownership £ 155,000

Located on the edge of the highly regarded Chilton Dene development, is this well presented two bedroom end terrace home offering open plan living and with excellent country walks on the doorstep up on to the Ridgeway.

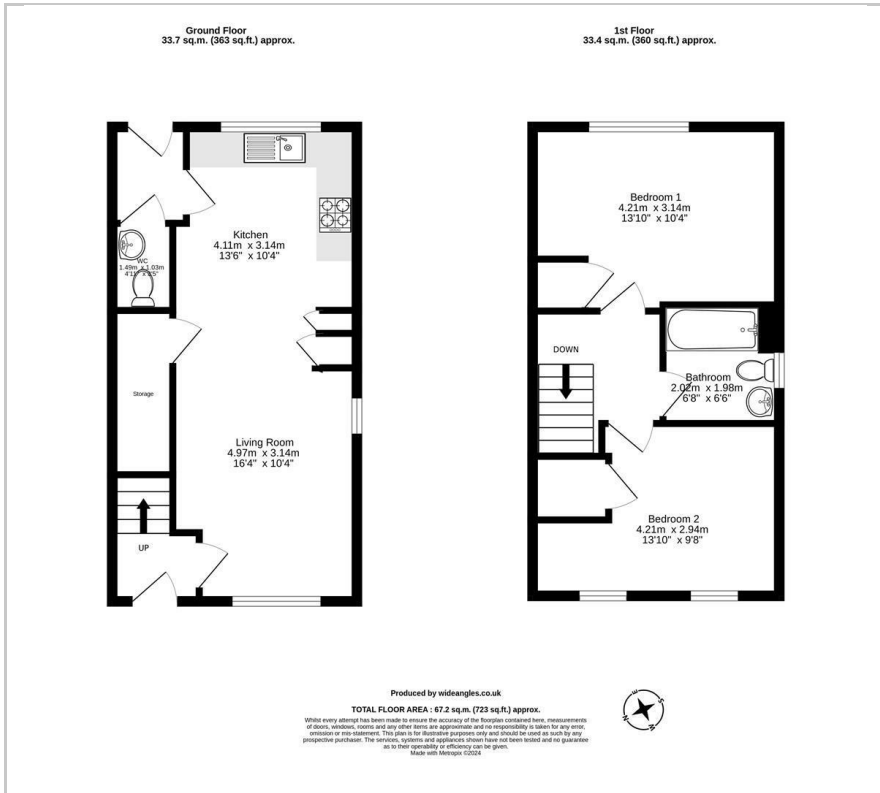
21 Roman Fields comprises of entrance hall leading through to the open plan living space with living room to the front of the property and kitchen/diner to the rear along with a downstairs cloakroom. Upstairs there is two double bedrooms and a family bathroom. Outside there is a fully enclosed rear garden 10.3 x 7.6m and allocated parking.

Chilton is a charming South Oxfordshire village offering a highly rated primary school village inn and superb access to the A34 which offers excellent links to the M4 and M40. The nearby town of Didcot offers more comprehensive shopping and leisure facilities together with an excellent rail connection to London Paddington in approx. 40 minutes.

- Rent £448.16 pcm approximately
- Service charge £13.44 pcm approximately
- 2 double bedrooms
- Open plan kitchen, diner living space
- Downstairs cloakroom
- Fully enclosed rear garden 10.3 x 7.6m
- Allocated parking
- Double glazed windows



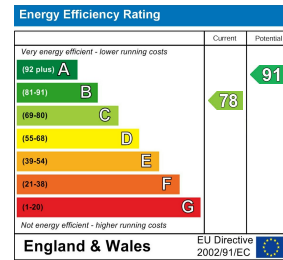
Floor Plan



Area Map



Energy Efficiency Graph



These particulars, whilst believed to be accurate are set out as a general outline only for guidance and do not constitute any part of an offer or contract. Intending purchasers should not rely on them as statements of representation of fact, but must satisfy themselves by inspection or otherwise as to their accuracy. No person in this firm's employment has the authority to make or give any representation or warranty in respect of the property.