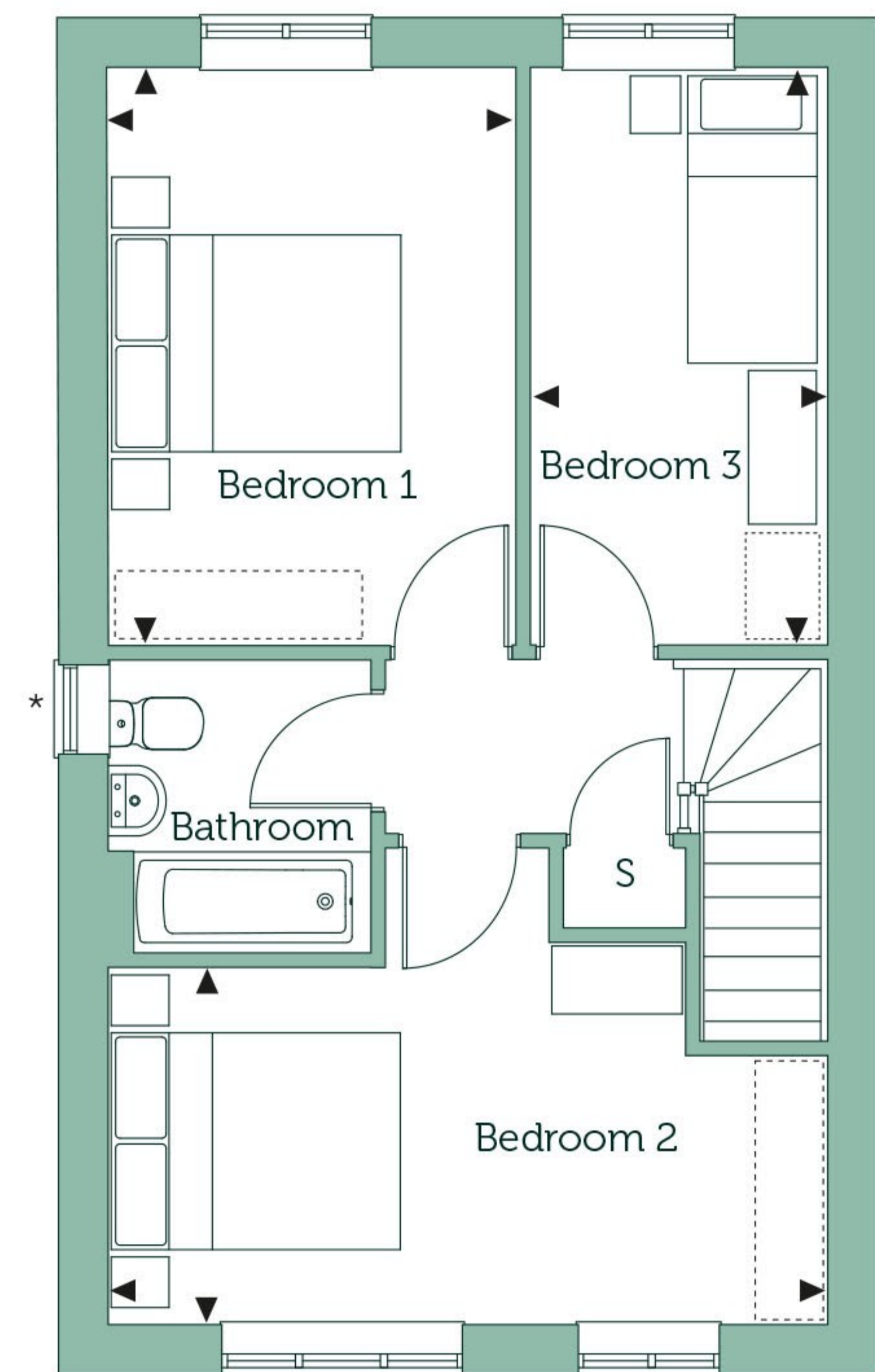
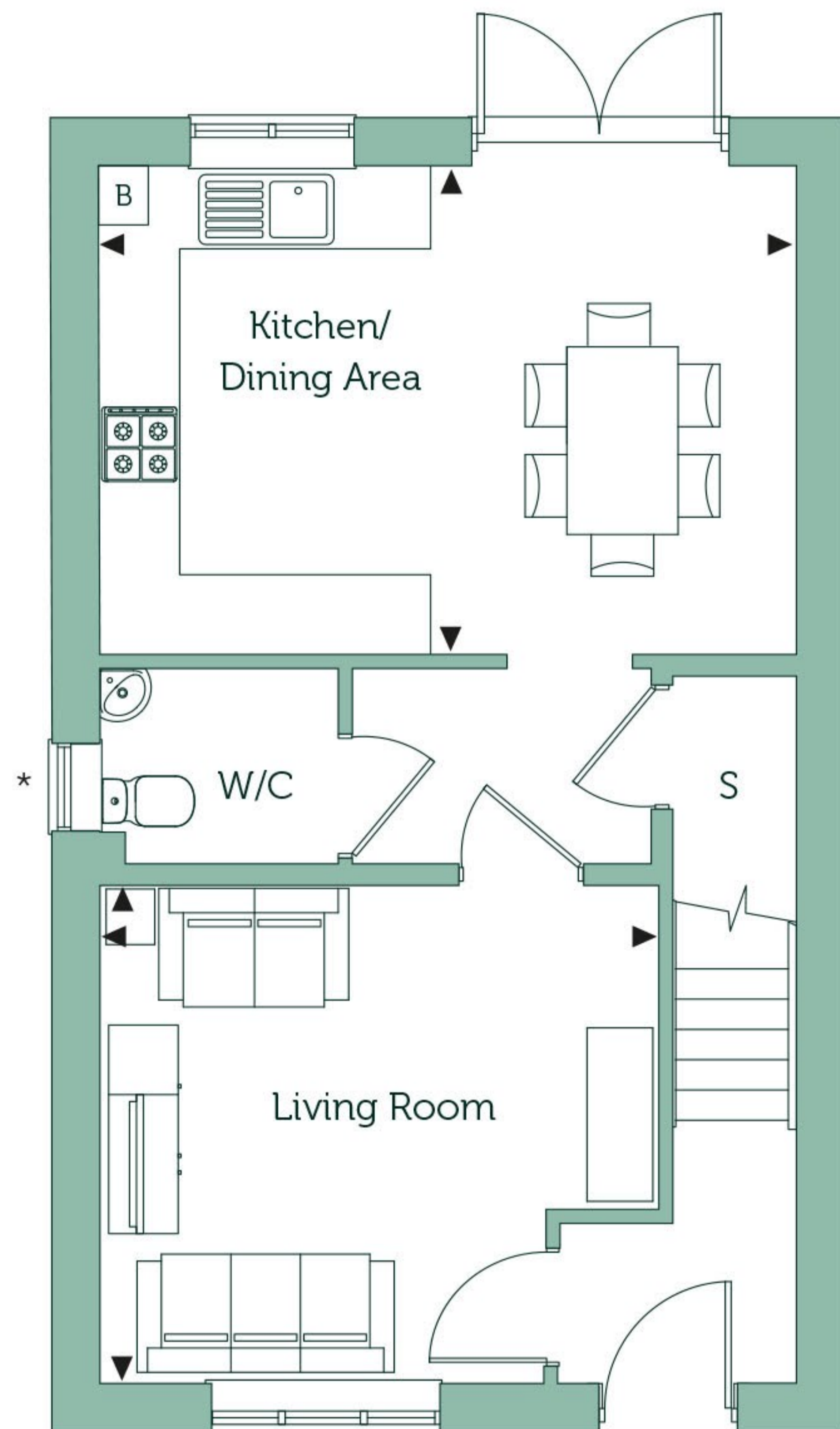


The Holly

Westwood Point, Margate (Phase 5b)

Three Bedroom Home

Plots: 211(h), 212(h), 213, 214, 217(h), 218[†], 221[†], 226[†], 228(h)[†], 229[†], 230(h)[†], 231[†], 233(h), 235[†], 241(h), 242, 243, 245(h)[†], 246[†], 269, 271[†], 272(h), 273, 274(h), 275, 276(h), 277, 278(h), 279(h) & 280[†]



*window omitted to plots 211, 214, 217, 218, 226, 233, 243, 269, 271, 272, 279

Ground Floor

Kitchen/Dining Area

11'10" x 17'0" 3.63m x 5.19m

Living Room

12'1" x 13'8" 3.69m x 4.16m

First Floor

Bedroom 1

13'7" x 9'8" 4.15m x 2.95m

Bedroom 2

8'4" x 17'0" 2.55m x 5.19m

Bedroom 3

13'7" x 7'0" 4.15m x 2.14m

Gross internal area

1007 sq ft 93.5 sq m

Key

B Boiler S Store Cupboard Wardrobe space

(h) handed plots. [†]Plots are wheelchair accessible and capable of being adapted. Floorplans are not drawn to scale. Measurements are taken from areas marked with an arrow. They are maximum approximate dimensions and given as a guide only. These should not be used as a basis for purchasing flooring or furniture. Orbit reserve the right to alter plans, specifications, position of doors and windows and change tenure subject to demand without prior notice. External elevations vary from plot to plot. Please ask your Sales Consultant for current information when reserving your new home. Information correct at time of going to print. Computer generated image overleaf.