

Kitchen / Dining Room

6.04m x 4.39m

19'10 x 14'5

Living Room

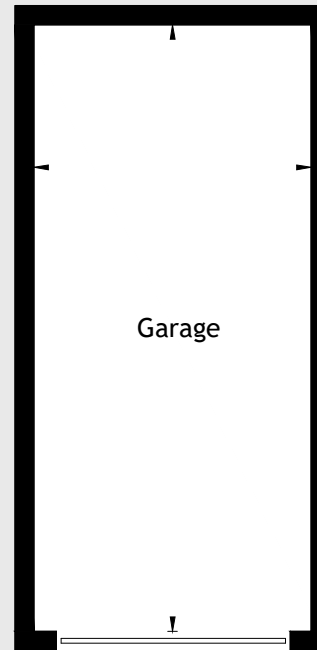
3.28m x 4.82m

10'9 x 15'10

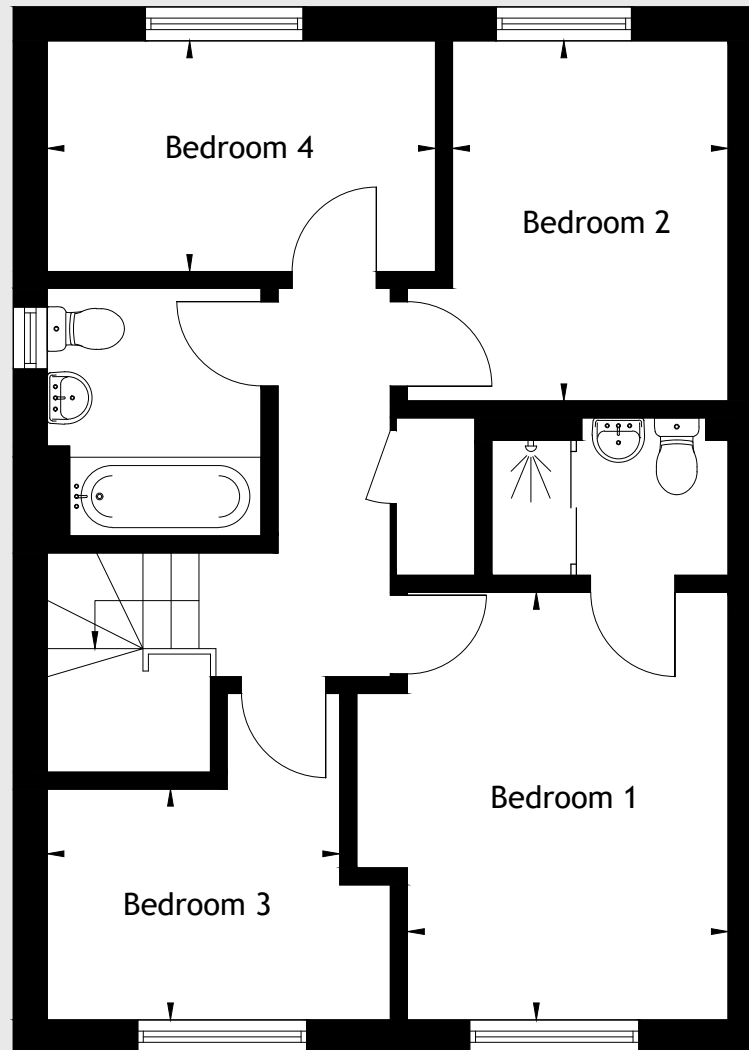
Garage

2.89m x 6.36m

9'6 x 20'10



(Not Shown In Actual
Location / Orientation)



Bedroom 1
2.85m x 3.83m
9'4 x 12'7

Bedroom 2
2.46m x 3.19m
8'1 x 10'6

Bedroom 3
2.51m x 2.07m
8'3 x 6'9

Bedroom 4
3.50m x 2.09m
11'6 x 6'10