



45 Priory Mill Lane

Witney, OX28 1YG

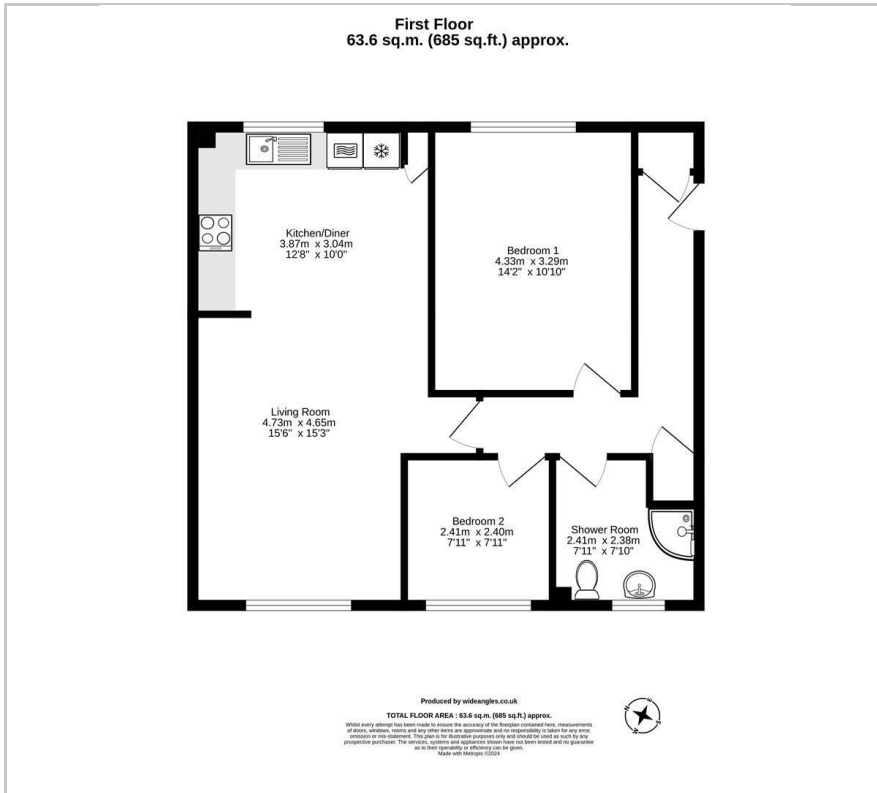
50% Shared ownership £115,000

A beautifully presented 2 bedroom first floor apartment set in a quiet location comprising of hall leading to spacious open plan kitchen and living space, with two bedrooms and a stunning shower room and allocated parking.

Priory Mill Lane is situated in Witney the largest market town in the Cotswolds. Witney has a charming bustling atmosphere with its unique blend of shops, antique centres and cafés including 5 mins walk to Staple Hall bus stop - a pick up and drop off point for destinations including Oxford City Centre (S1) and London (Oxford Tube).

- Rent £449.55 pcm approximately
- Service charge £69.54 pcm approximately
- Ground rent £8.33 pcm approximately
- Two bedrooms
- Stunning open plan kitchen living space
- Shower room
- Allocated parking
- 5-10 mins walk to Witney High Street (including Waitrose, Marks & Spencer and Boots)
- 6 mins drive to the A40

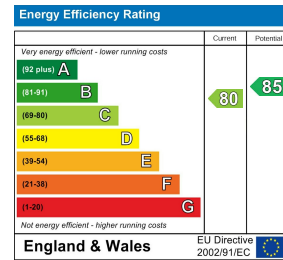
Floor Plan



Area Map



Energy Efficiency Graph



These particulars, whilst believed to be accurate are set out as a general outline only for guidance and do not constitute any part of an offer or contract. Intending purchasers should not rely on them as statements of representation of fact, but must satisfy themselves by inspection or otherwise as to their accuracy. No person in this firm's employment has the authority to make or give any representation or warranty in respect of the property.