



1 Charlesby Drive

Watchfield, SN6 8RT

75% Shared ownership £187,500

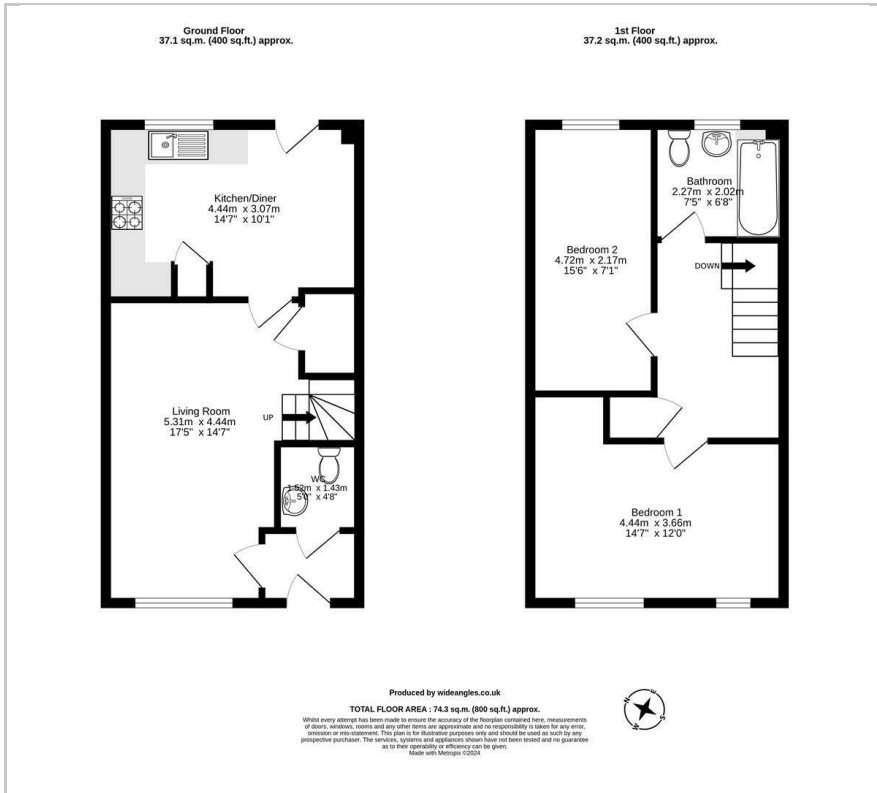
An attractive Cotswold stone two double bedroom semi-detached home. Offering entrance hall with downstairs cloakroom, good sized living room and kitchen/ dining room leading out to the fully enclosed rear garden. Upstairs there is two double bedrooms and a family bathroom. The property also has the added advantage of two allocated parking spaces, gas central heating and double glazed windows.

Watchfield is a very pleasant village southwest of Oxfordshire. You can find more comprehensive shopping and leisure facilities in Swindon.

- Rent £151.70 pcm approximately
- Service charge £13.44 pcm approximately
- Two double bedrooms
- Semi-detached
- Family bathroom
- Kitchen/diner
- Good sized lounge
- Downstairs cloakroom
- Two allocated parking spaces
- Fully enclosed rear garden



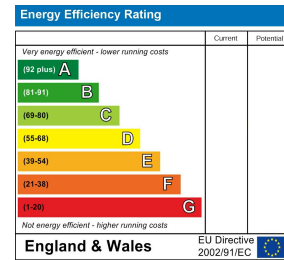
Floor Plan



Area Map



Energy Efficiency Graph



These particulars, whilst believed to be accurate are set out as a general outline only for guidance and do not constitute any part of an offer or contract. Intending purchasers should not rely on them as statements of representation of fact, but must satisfy themselves by inspection or otherwise as to their accuracy. No person in this firm's employment has the authority to make or give any representation or warranty in respect of the property.

Royal Scot House 99 Station Road, Didcot, Oxfordshire, OX11 7NN
 Tel: 01235 515900 Email: Sales@soha.co.uk