

Sflexi Acton

Rent and save before you buy



Rent and save before you buy

Spend less on rent – and save for your Shared Ownership home

Saving for a deposit can be hard when you're renting. But with SO Flexi it's much easier. Just choose a great place to live and pay a lower-than-market rent, while you save up to buy your home with Shared Ownership.

How does it work?

- Choose a high quality home from the wide range on offer
- Check you're eligible and apply – our team will help
- Live in your new home for at least two years, paying a lower-than-market rent
- Save up the deposit to buy your home with Shared Ownership

Who can benefit?

SO Flexi is helping as many people as possible save up for their first home. Talk to us today if you can't afford to buy in your local area, even with Shared Ownership, and you:

- Have a formal rental tenancy or an informal arrangement with family or friends
- Are in full or part time employment and able to save whilst paying rent
- Have a household income below £60,000
- Don't own any other residential home

Why wait any longer to live the way you want to?

Get in touch with our friendly team today to check you're eligible and apply.

Search [SO Flexi](#)

Visit [soflexi.co.uk](#)

A great place to call home

SO Flexi Acton is a collection of 52 one, two and three-bedroom apartments in thriving West London, within minutes of superb travel connections. This stylish development is located in the north of the desirable Acton Park Conservation Area – a vibrant urban village known for its historic architecture, leafy streets and open green spaces.

The attractive modern development is surrounded by inviting mature tree-lined landscaping, and each high-quality apartment benefits from its own balcony or terrace. Contemporary interiors are carefully designed to maximise space and natural light.

The development also benefits from covered secure cycle stores with key fob access for all residents.

52 stylish
one, two and
three-bedroom
apartments

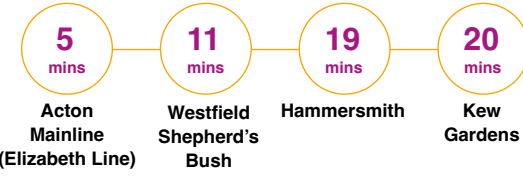


The ideal location

SO Flexi Acton is conveniently located within a few minutes walk from both Acton Park and Acton High Street offering amenities close to hand, and also benefits from its proximity to excellent transport connections. The Great Western Rail main line runs east-west to the north of the site, connecting Bristol Temple Meads with London Paddington, through Hanwell, Ealing Broadway and Acton Main Line (Elizabeth Line). To the north-east of the site is East Acton Station on the Central line taking you directly to Westfield London, Bond Street, the West End and the city.



By Bike



On Foot



By Train From Acton Main Line



By Car



Approximate travel times are taken from National Rail and Google and can vary depending on the time of day.



Development overview



73 Friars Place Lane,
London
W3 7SS

- SO Flexi / Commercial
- Affordable Rent / SO Flexi
- Bin store
- Cycle store
- Commercial use
- Plant / Service



These are computer generated images and are for illustrative purposes only. Customers should not rely on these images.



These are computer generated images and are for illustrative purposes only. Customers should not rely on these images.

Specification

General

- White vinyl matt walls
- Chrome hanging rail in cupboard
- Metal blinds
- Low energy pendant lighting
- Carpet to bedrooms

Kitchen

- LED spotlights
- LED striplights to underside of wall units
- Vinyl flooring
- Laminate worktop
- Gloss finish kitchen cupboards
- Stainless steel splashback to hob
- Integrated kitchen appliances
- Kitchen sink mixer

Bathroom

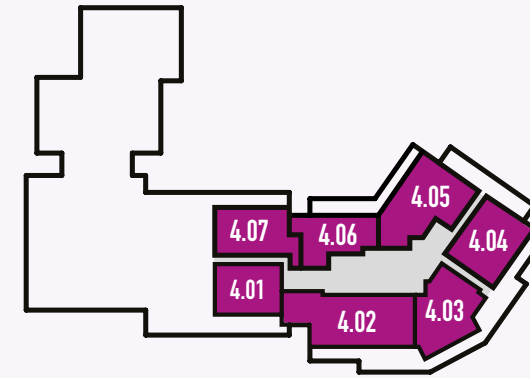
- Tiles to all bathrooms
- LED spotlights
- Ideal sanitary ware

Security and peace of mind

- Smoke alarm and carbon monoxide detector
- Sprinklers
- Audio visual intercom system to communal entrance doors
- Cycle storage

Plot locator

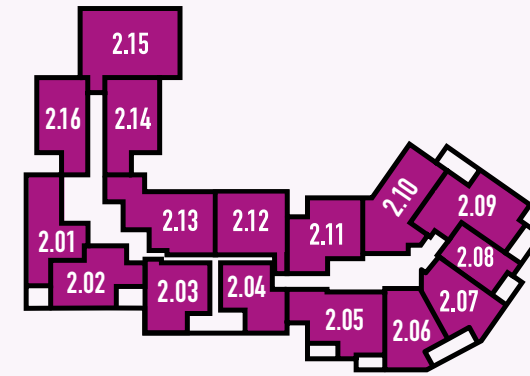
Click on a plot to view the plan



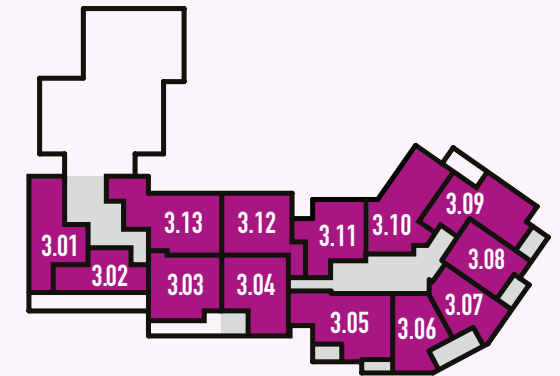
Fourth floor



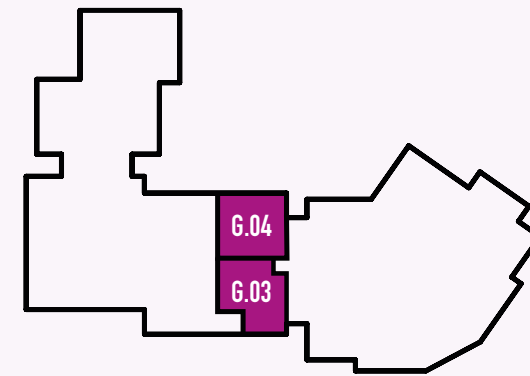
Fifth floor



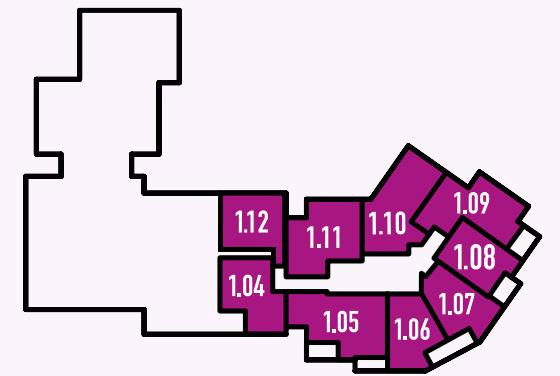
Second floor



Third floor

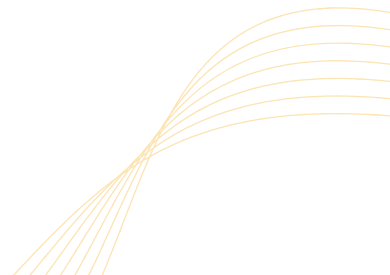


Ground



First floor

Specifications stated in this brochure are for guidance only. These particulars do not constitute any part of an offer or contract and are subject to change.



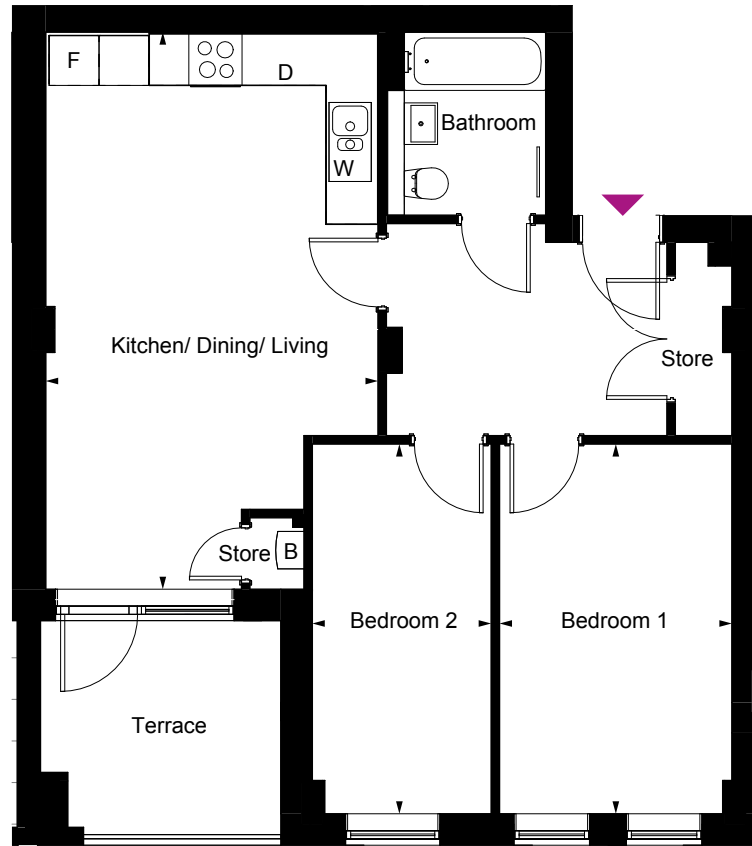
Type 3

Two bedroom apartment

Plot G.03
Floor Ground

Kitchen/Living/Dining	3.99m x 6.69m	13' x 22'
Bedroom 1	2.79m x 4.44m	9' x 15'
Bedroom 2	2.15m x 4.44m	7' x 15'
Total living space	64 sq m	688 sq ft

B - Boiler D - Dishwasher F - Fridge freezer W - Washer / Dryer



Ground floor

All floor plans in this brochure are for general guidance only. All room dimensions are subject to plus/minus 5% tolerance. Measurement are taken from plans representing the largest crosssection of each room - actual build may vary. Any dimensions shown are not intended to be used for carpet sizes, appliances, spaces or items of furniture. These particulars do not constitute any part of an offer or contract with regard to the specifications.

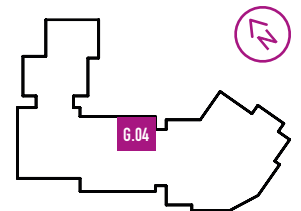
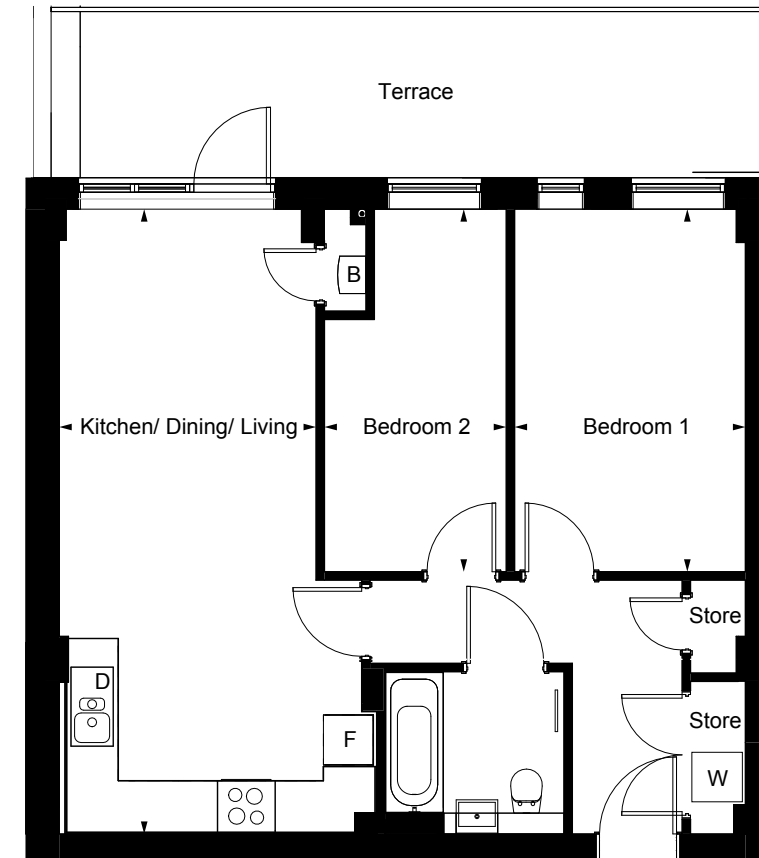
Type 4

Two bedroom apartment

Plot G.04
Floor Ground

Kitchen/Living/Dining	3.08m x 7.51m	10' x 25'
Bedroom 1	2.77m x 4.35m	7' x 14'
Bedroom 2	2.18m x 4.35m	9' x 14'
Total living space	63 sq m	674 sq ft

B - Boiler D - Dishwasher F - Fridge freezer W - Washer / Dryer



Ground floor

All floor plans in this brochure are for general guidance only. All room dimensions are subject to plus/minus 5% tolerance. Measurement are taken from plans representing the largest crosssection of each room - actual build may vary. Any dimensions shown are not intended to be used for carpet sizes, appliances, spaces or items of furniture. These particulars do not constitute any part of an offer or contract with regard to the specifications.

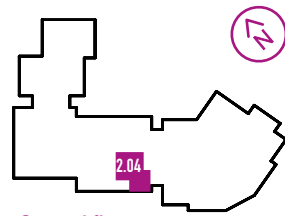
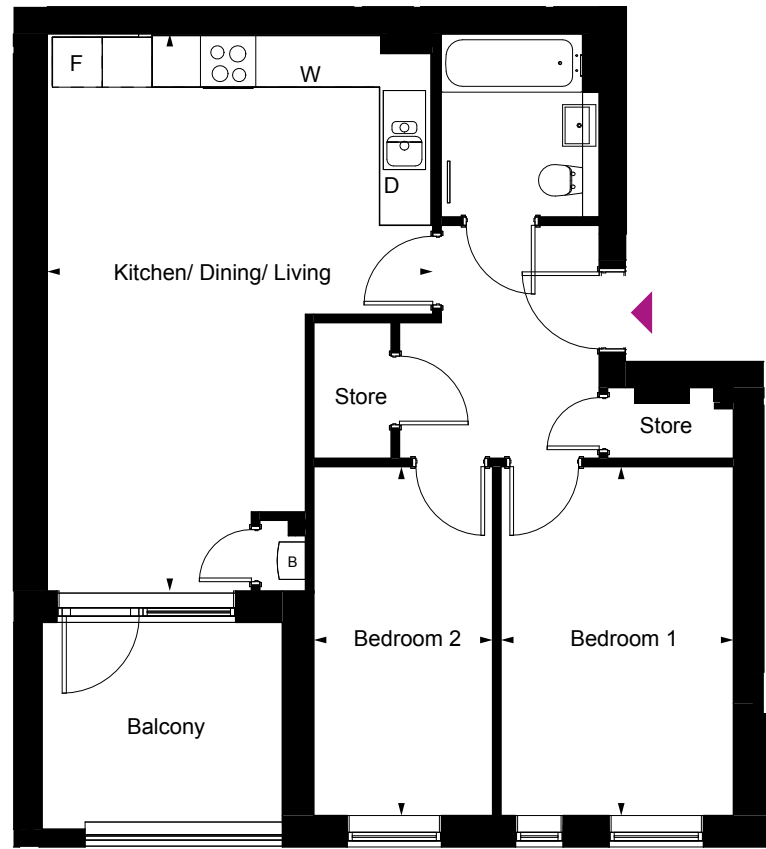
Type 12

Two bedroom apartment

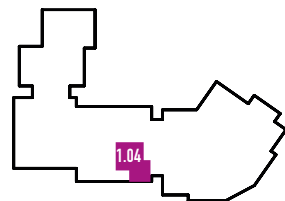
Plots	Floor
1.04	First
2.04	Second

Kitchen/Living/Dining	4.63m x 6.69m	15' x 27'
Bedroom 1	2.79m x 4.19m	9' x 14'
Bedroom 2	2.15m x 4.19m	7' x 14'
Total living space	62 sq m	664 sq ft

B - Boiler D - Dishwasher F - Fridge freezer W - Washer / Dryer



Second floor



First floor

All floor plans in this brochure are for general guidance only. All room dimensions are subject to plus/minus 5% tolerance. Measurement are taken from plans representing the largest crosssection of each room - actual build may vary. Any dimensions shown are not intended to be used for carpet sizes, appliances, spaces or items of furniture. These particulars do not constitute any part of an offer or contract with regard to the specifications.

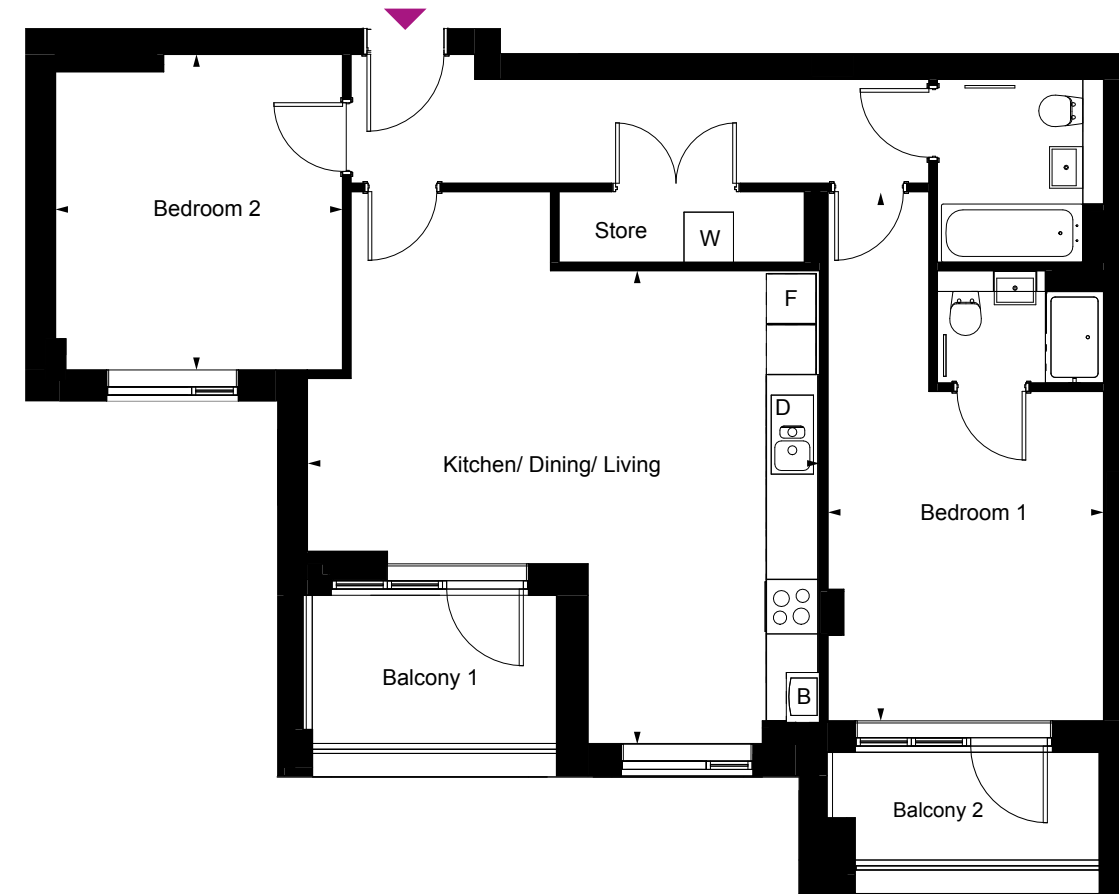
Type 13

Two bedroom apartment

Plots	Floor
1.05	First
2.05	Second
3.05	Third

Kitchen/Living/Dining	6.63m x 5.69m	18' x 19'
Bedroom 1	3.30m x 3.96m	11' x 13'
Bedroom 2	3.45m x 3.79m	11' x 12'
Total living space	80 sq m	862 sq ft

B - Boiler D - Dishwasher F - Fridge freezer W - Washer / Dryer



Third floor



Second floor



First floor

All floor plans in this brochure are for general guidance only. All room dimensions are subject to plus/minus 5% tolerance. Measurement are taken from plans representing the largest crosssection of each room - actual build may vary. Any dimensions shown are not intended to be used for carpet sizes, appliances, spaces or items of furniture. These particulars do not constitute any part of an offer or contract with regard to the specifications.

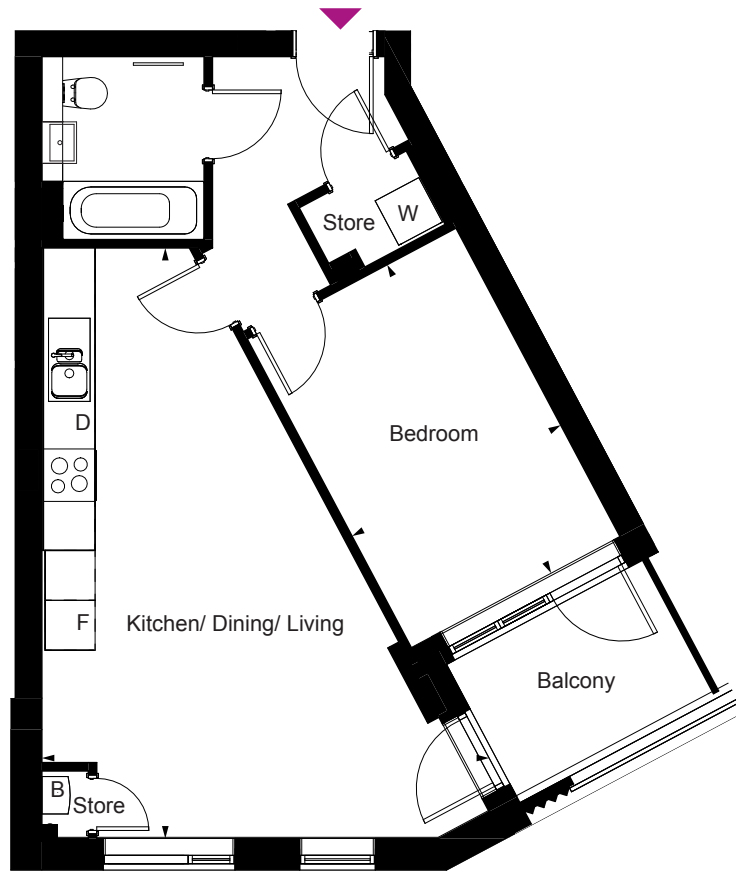
Type 14

One bedroom apartment

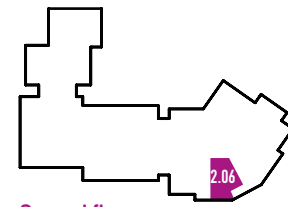
Plots	Floor
1.06	First
2.06	Second
3.06	Third

Kitchen/Living/Dining	7.10m x 5.37m	23' x 18'
Bedroom	2.81m x 4.20m	9' x 14'
Total living space	51 sq m	549 sq ft

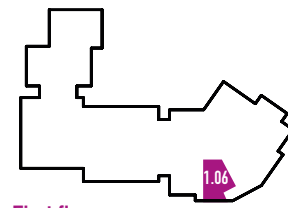
B - Boiler D - Dishwasher F - Fridge freezer W - Washer / Dryer



Third floor



Second floor



First floor

All floor plans in this brochure are for general guidance only. All room dimensions are subject to plus/minus 5% tolerance. Measurement are taken from plans representing the largest crosssection of each room - actual build may vary. Any dimensions shown are not intended to be used for carpet sizes, appliances, spaces or items of furniture. These particulars do not constitute any part of an offer or contract with regard to the specifications.

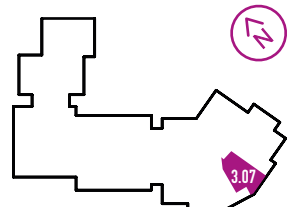
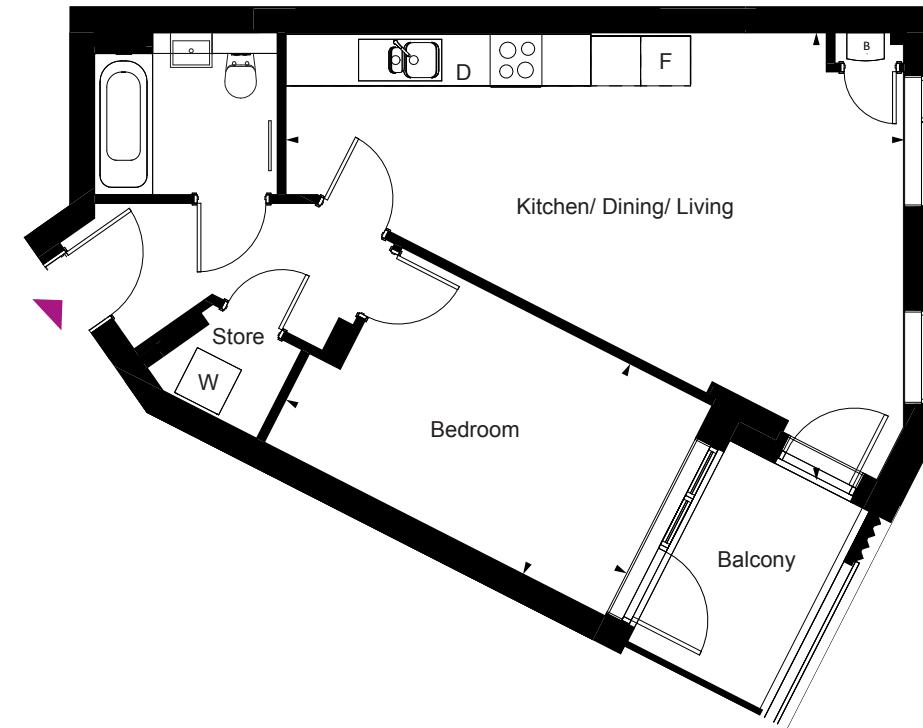
Type 15

One bedroom apartment

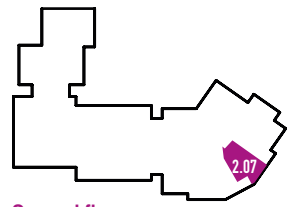
Plots	Floor
1.07	First
2.07	Second
3.07	Third

Kitchen/Living/Dining	7.44m x 5.38m	24' x 18'
Bedroom	4.60m x 2.84m	15' x 9'
Total living space	53 sq m	570 sq ft

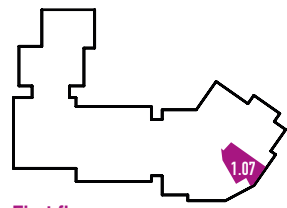
B - Boiler D - Dishwasher F - Fridge freezer W - Washer / Dryer



Third floor



Second floor



First floor

All floor plans in this brochure are for general guidance only. All room dimensions are subject to plus/minus 5% tolerance. Measurement are taken from plans representing the largest crosssection of each room - actual build may vary. Any dimensions shown are not intended to be used for carpet sizes, appliances, spaces or items of furniture. These particulars do not constitute any part of an offer or contract with regard to the specifications.

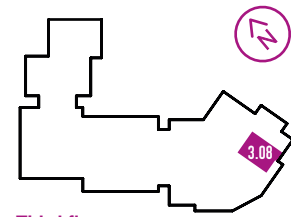
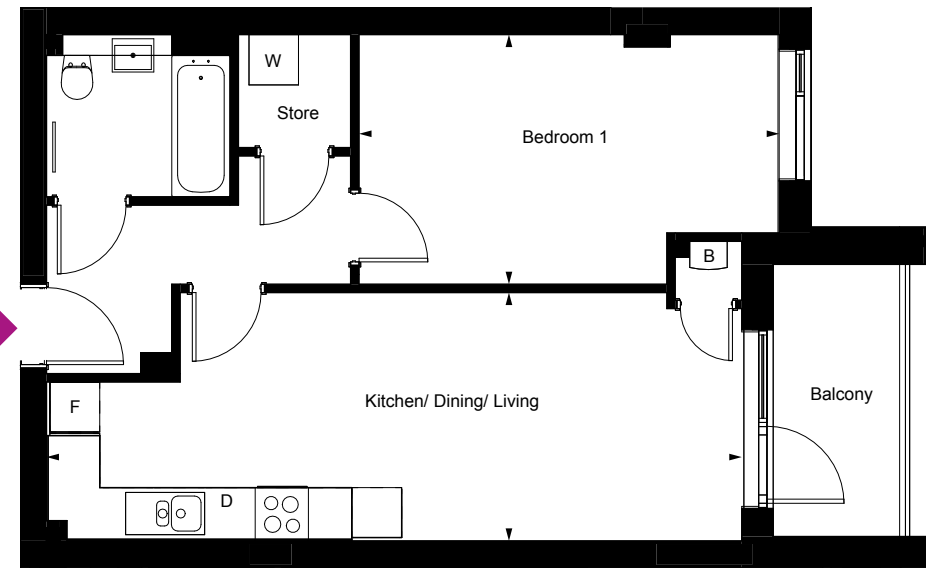
Type 16

One bedroom apartment

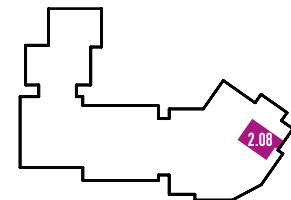
Plots	Floor
1.08	First
2.08	Second
3.08	Third

Kitchen/Living/Dining	8.35m x 2.98m	27' x 10'
Bedroom	5.05m x 3.00m	17' x 10'
Total living space	52 sq m	558 sq ft

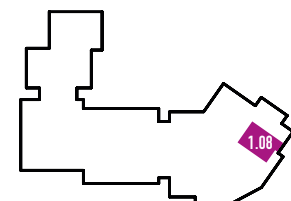
B - Boiler D - Dishwasher F - Fridge freezer W - Washer / Dryer



Third floor



Second floor



First floor

All floor plans in this brochure are for general guidance only. All room dimensions are subject to plus/minus 5% tolerance. Measurement are taken from plans representing the largest crosssection of each room - actual build may vary. Any dimensions shown are not intended to be used for carpet sizes, appliances, spaces or items of furniture. These particulars do not constitute any part of an offer or contract with regard to the specifications.

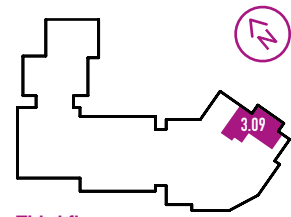
Type 17

Two bedroom apartment

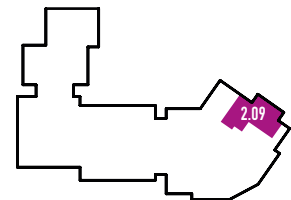
Plots	Floor
1.09	First
2.09	Second
3.09	Third

Kitchen/Living/Dining	5.25m x 5.74m	17' x 19'
Bedroom 1	3.69m x 3.30m	12' x 11'
Bedroom 2	2.75m x 4.40m	9' x 14'
Total living space	73 sq m	786 sq ft

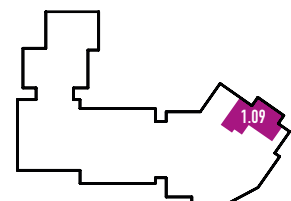
B - Boiler D - Dishwasher F - Fridge freezer W - Washer / Dryer



Third floor



Second floor



First floor

All floor plans in this brochure are for general guidance only. All room dimensions are subject to plus/minus 5% tolerance. Measurement are taken from plans representing the largest crosssection of each room - actual build may vary. Any dimensions shown are not intended to be used for carpet sizes, appliances, spaces or items of furniture. These particulars do not constitute any part of an offer or contract with regard to the specifications.

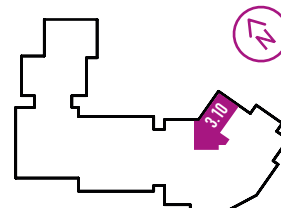
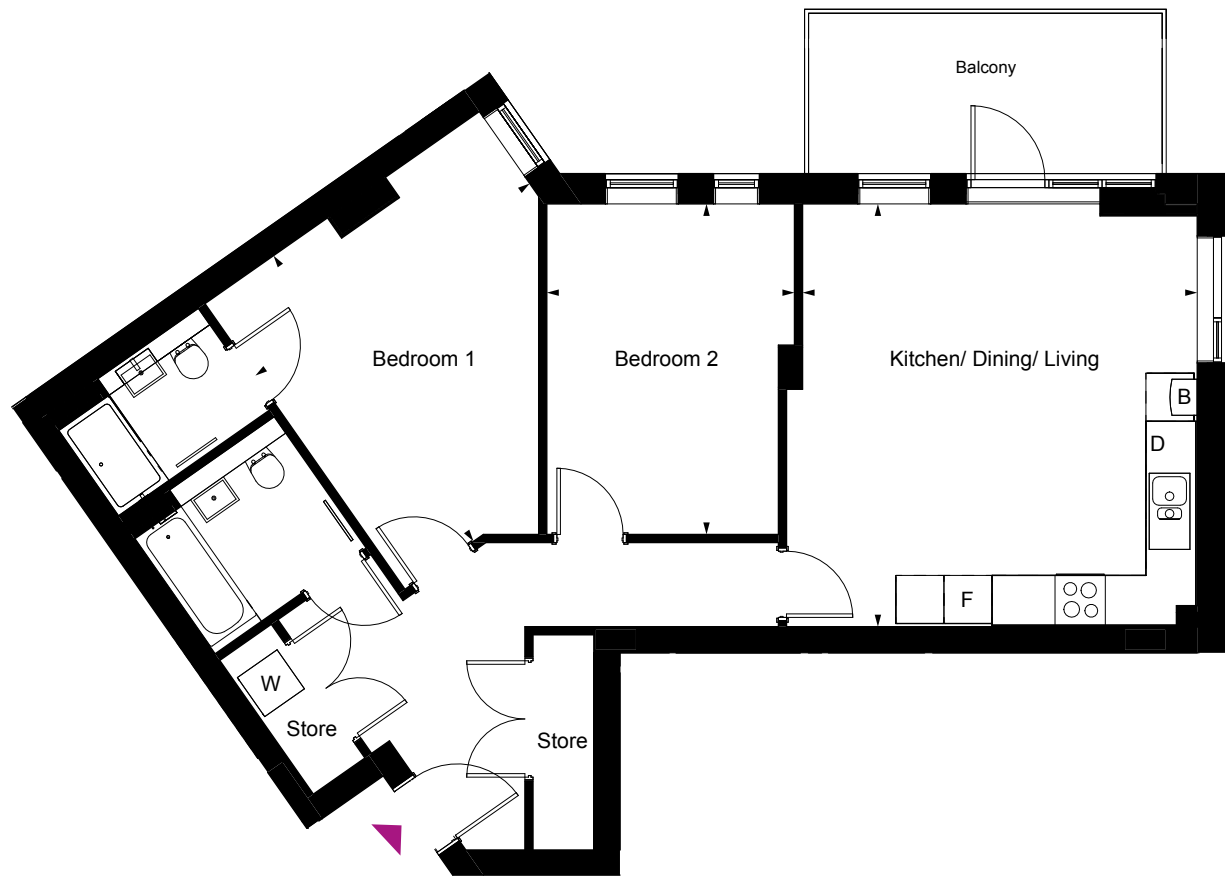
Type 18

Two bedroom apartment

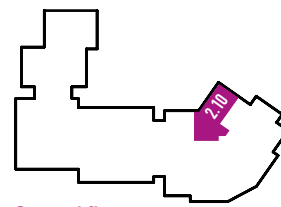
Plots	Floor
1.10	First
2.10	Second
3.10	Third

Kitchen/Living/Dining	4.92m x 5.27m	16' x 17'
Bedroom 1	4.17m x 4.35m	14' x 14'
Bedroom 2	3.09m x 4.12m	10' x 14'
Total living space	78 sq m	838 sq ft

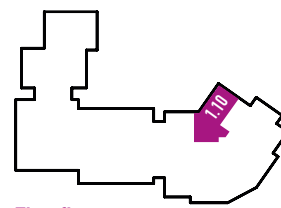
B - Boiler D - Dishwasher F - Fridge freezer W - Washer / Dryer



Third floor



Second floor



First floor

All floor plans in this brochure are for general guidance only. All room dimensions are subject to plus/minus 5% tolerance. Measurement are taken from plans representing the largest crosssection of each room - actual build may vary. Any dimensions shown are not intended to be used for carpet sizes, appliances, spaces or items of furniture. These particulars do not constitute any part of an offer or contract with regard to the specifications.

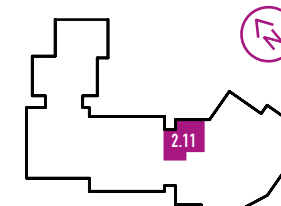
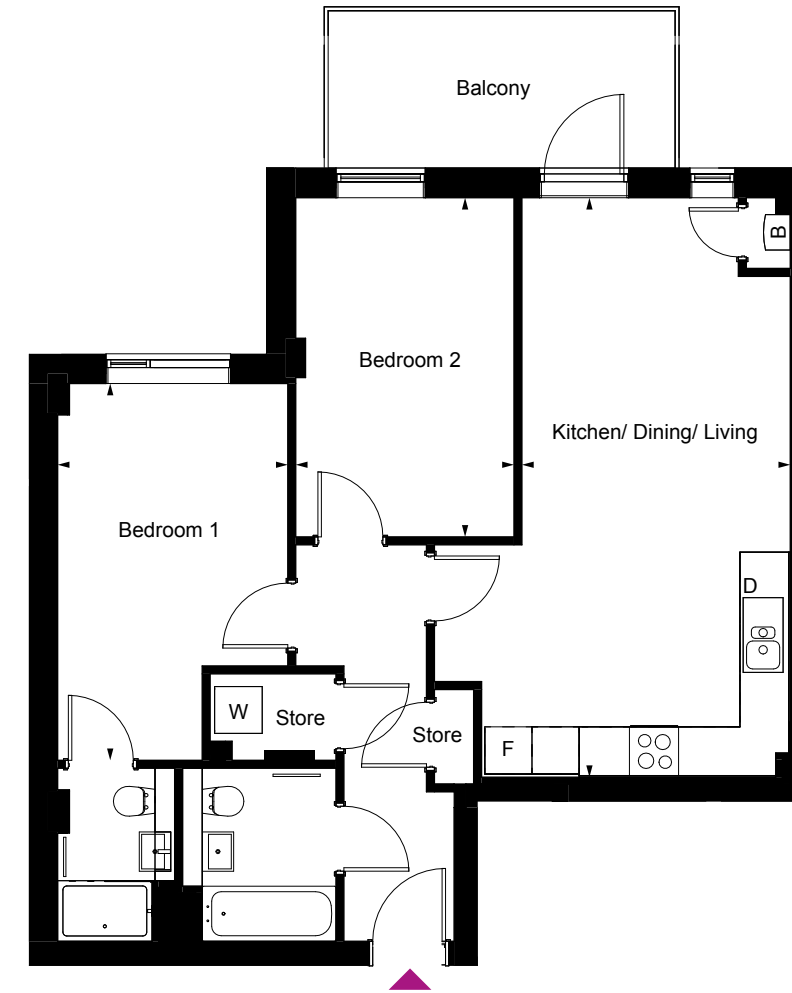
Type 19

Two bedroom apartment

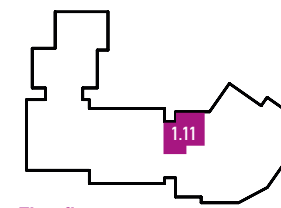
Plots	Floor
1.11	First
2.11	Second

Kitchen/Living/Dining	3.41m x 7.37m	11' x 24'
Bedroom one	2.93m x 4.79m	10' x 16'
Bedroom two	2.78m x 4.31m	9' x 14'
Total living space	73 sq m	780 sq ft

B - Boiler D - Dishwasher F - Fridge freezer W - Washer / Dryer



Second floor



First floor

All floor plans in this brochure are for general guidance only. All room dimensions are subject to plus/minus 5% tolerance. Measurement are taken from plans representing the largest crosssection of each room - actual build may vary. Any dimensions shown are not intended to be used for carpet sizes, appliances, spaces or items of furniture. These particulars do not constitute any part of an offer or contract with regard to the specifications.

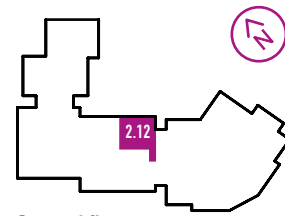
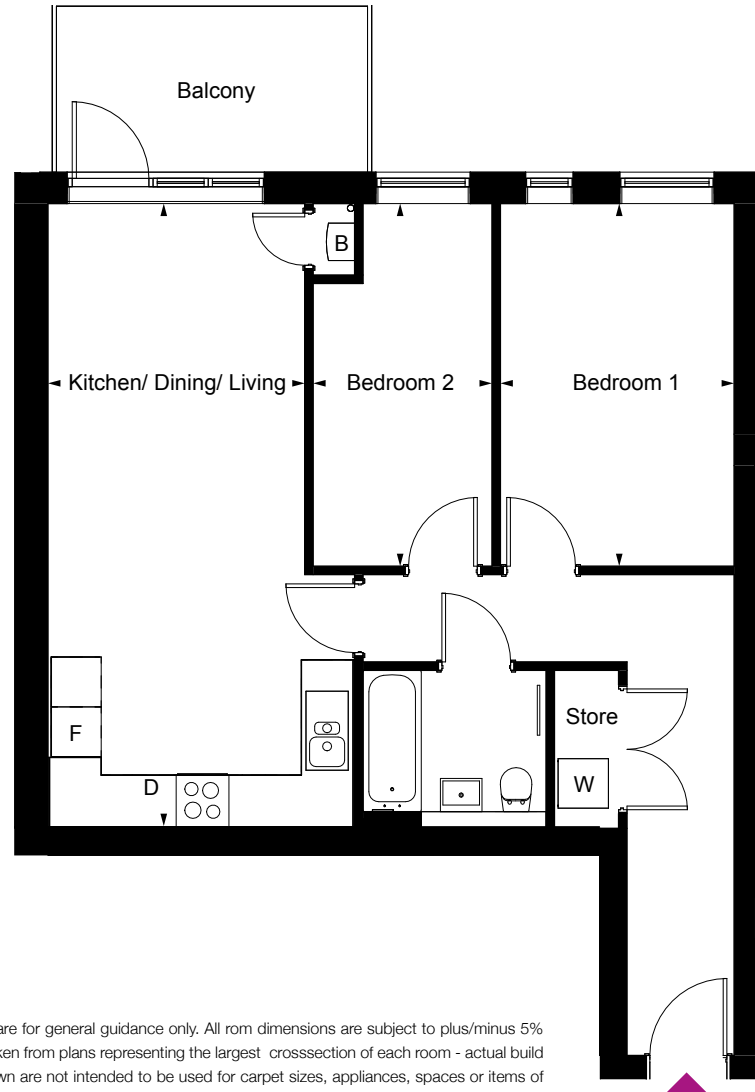
Type 20

Two bedroom apartment

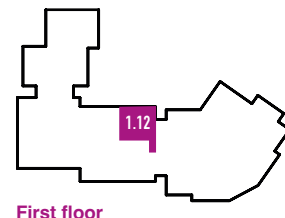
Plots	Floor
1.12	First
2.12	Second

Kitchen/Living/Dining	3.09m x 7.5m	10' x 25'
Bedroom 1	2.81m x 4.36m	9' x 14'
Bedroom 2	2.15m x 4.36m	7' x 14'
Total living space	66 sq m	712 sq ft

B - Boiler D - Dishwasher F - Fridge freezer W - Washer / Dryer



Second floor



First floor

All floor plans in this brochure are for general guidance only. All room dimensions are subject to plus/minus 5% tolerance. Measurement are taken from plans representing the largest crosssection of each room - actual build may vary. Any dimensions shown are not intended to be used for carpet sizes, appliances, spaces or items of furniture. These particulars do not constitute any part of an offer or contract with regard to the specifications.

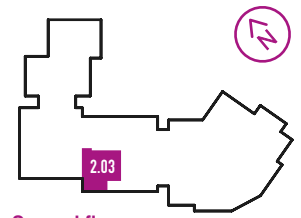
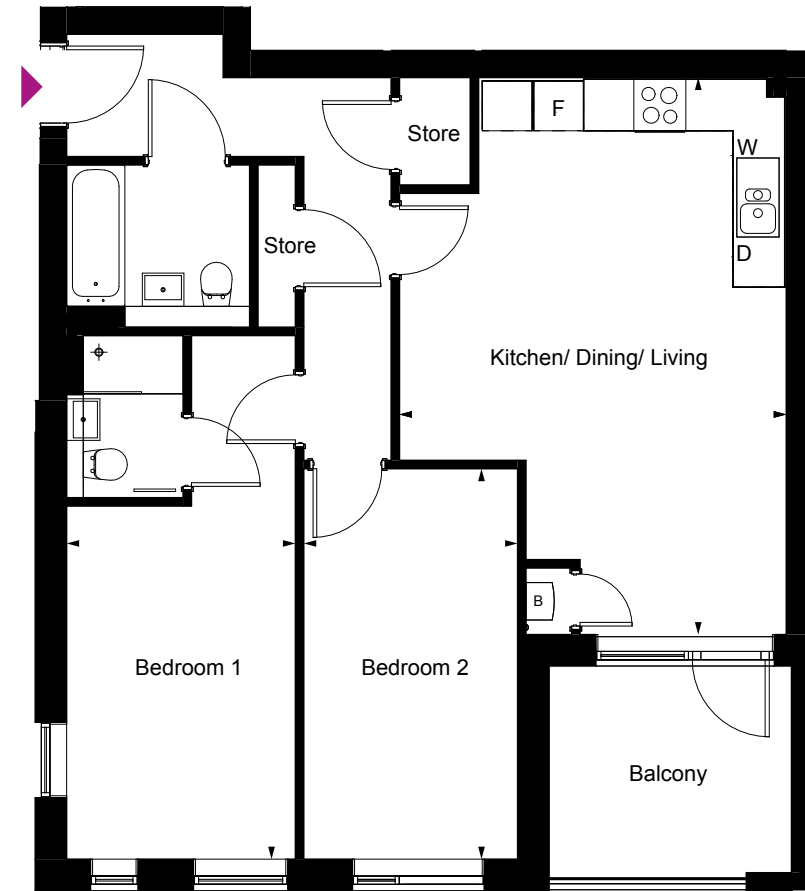
Type 46

Two bedroom apartment

Plot	Floor
2.03	Second

Kitchen/Living/Dining	4.65m x 6.70m	15' x 22'
Bedroom 1	2.75m x 6.30m	9' x 21'
Bedroom 2	2.57m x 4.49m	8' x 15'
Total living space	75 sq m	803 sq ft

B - Boiler D - Dishwasher F - Fridge freezer W - Washer / Dryer



Second floor

All floor plans in this brochure are for general guidance only. All room dimensions are subject to plus/minus 5% tolerance. Measurement are taken from plans representing the largest crosssection of each room - actual build may vary. Any dimensions shown are not intended to be used for carpet sizes, appliances, spaces or items of furniture. These particulars do not constitute any part of an offer or contract with regard to the specifications.

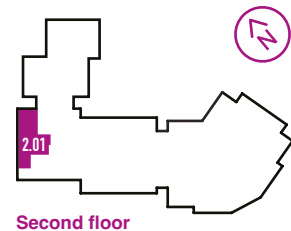
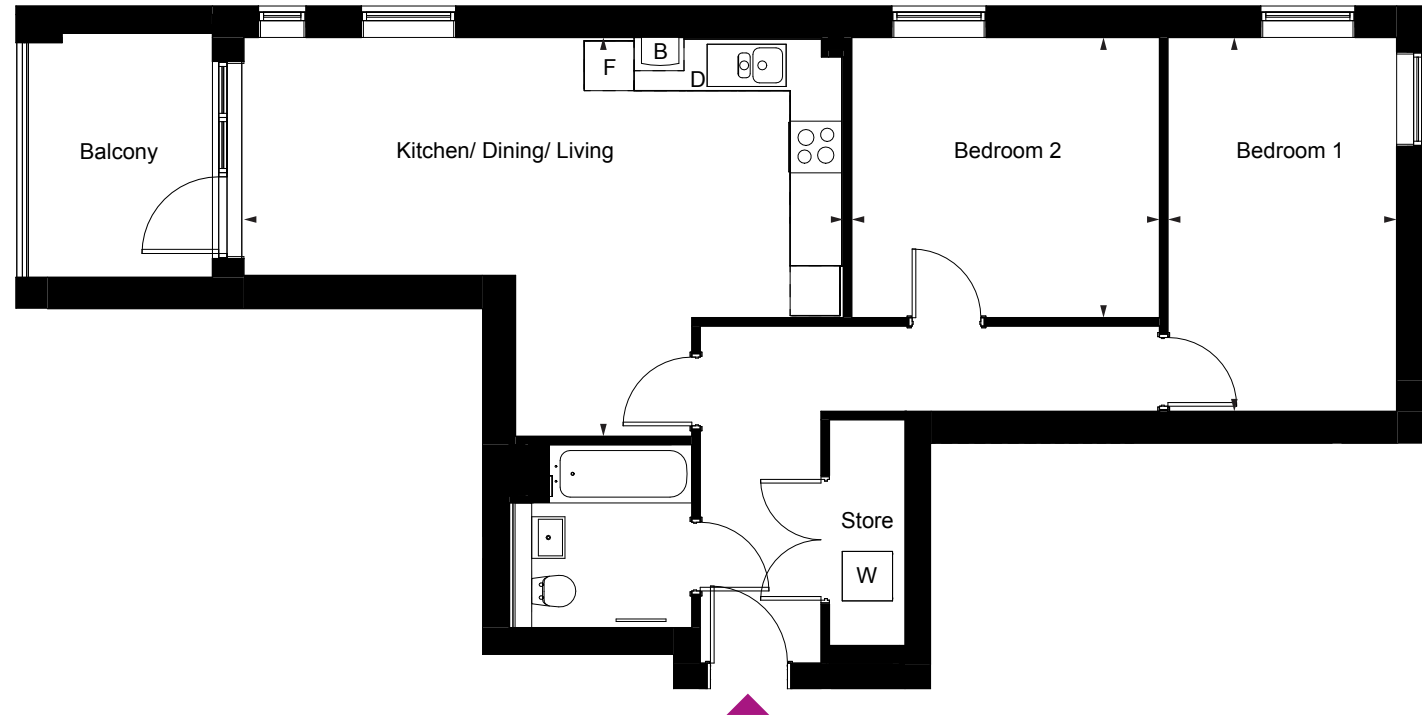
Type 44

Two bedroom apartment

Plot 2.01
Floor Second

Kitchen/Living/Dining	7.20m x 4.79m	24' x 16'
Bedroom 1	2.75m x 4.49m	9' x 15'
Bedroom 2	3.70m x 3.37m	12' x 11'
Total living space	71 sq m	764 sq ft

B - Boiler D - Dishwasher F - Fridge freezer W - Washer / Dryer



All floor plans in this brochure are for general guidance only. All room dimensions are subject to plus/minus 5% tolerance. Measurement are taken from plans representing the largest crosssection of each room - actual build may vary. Any dimensions shown are not intended to be used for carpet sizes, appliances, spaces or items of furniture. These particulars do not constitute any part of an offer or contract with regard to the specifications.

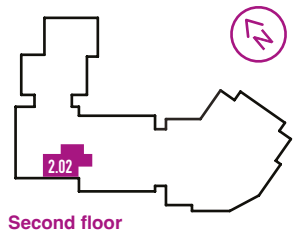
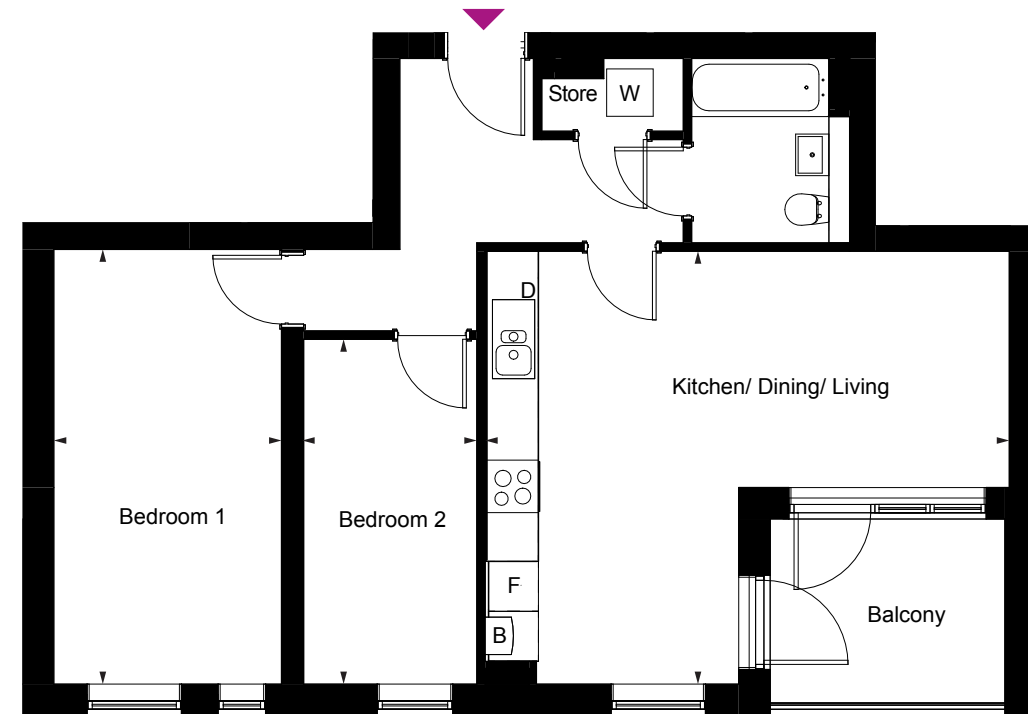
Type 45

Two bedroom apartment

Plot 2.02
Floor Second

Kitchen/Living/Dining	6.30m x 5.20m	21' x 17'
Bedroom 1	2.73m x 5.22m	9' x 17'
Bedroom 2	2.10m x 4.14m	7' x 14'
Total living space	65 sq m	699 sq ft

B - Boiler D - Dishwasher F - Fridge freezer W - Washer / Dryer



All floor plans in this brochure are for general guidance only. All room dimensions are subject to plus/minus 5% tolerance. Measurement are taken from plans representing the largest crosssection of each room - actual build may vary. Any dimensions shown are not intended to be used for carpet sizes, appliances, spaces or items of furniture. These particulars do not constitute any part of an offer or contract with regard to the specifications.

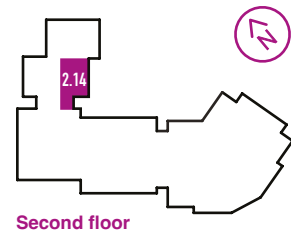
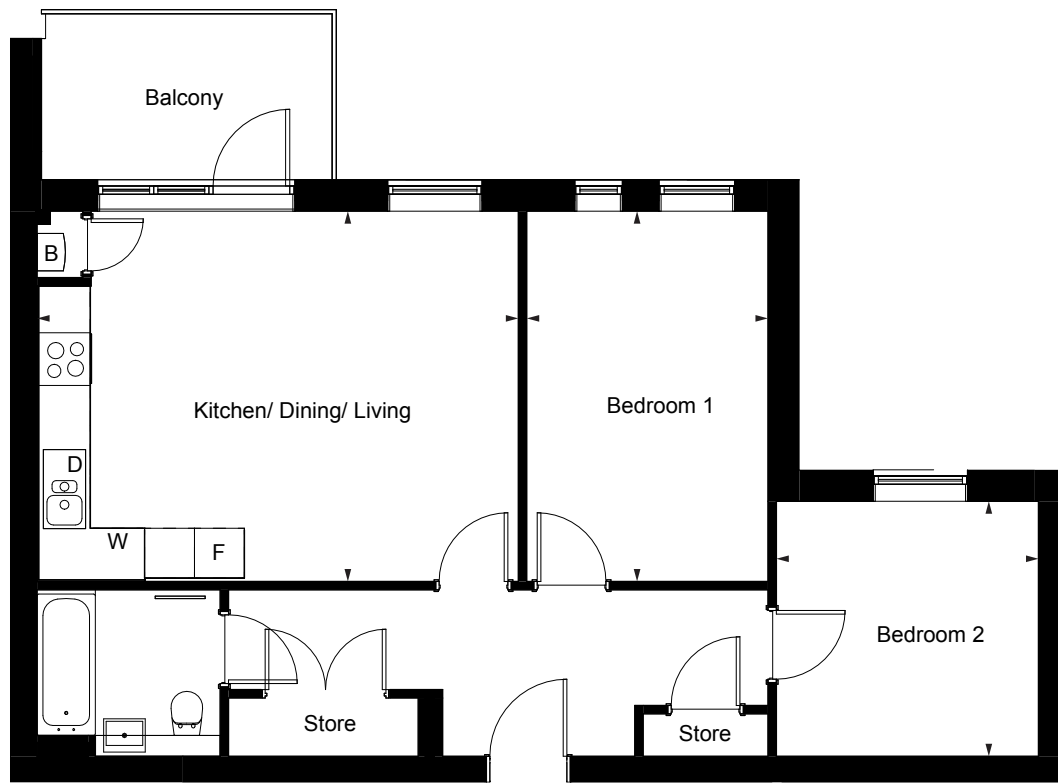
Type 25

Two bedroom apartment

Plot 2.14
Floor Second

Kitchen/Living/Dining	5.78m x 4.45m	19' x 15'
Bedroom 1	2.90m x 4.45m	10' x 15'
Bedroom 2	3.15m x 3.06m	10' x 10'
Total living space	68 sq m	726 sq ft

B - Boiler D - Dishwasher F - Fridge freezer W - Washer / Dryer



All floor plans in this brochure are for general guidance only. All room dimensions are subject to plus/minus 5% tolerance. Measurement are taken from plans representing the largest crosssection of each room - actual build may vary. Any dimensions shown are not intended to be used for carpet sizes, appliances, spaces or items of furniture. These particulars do not constitute any part of an offer or contract with regard to the specifications.

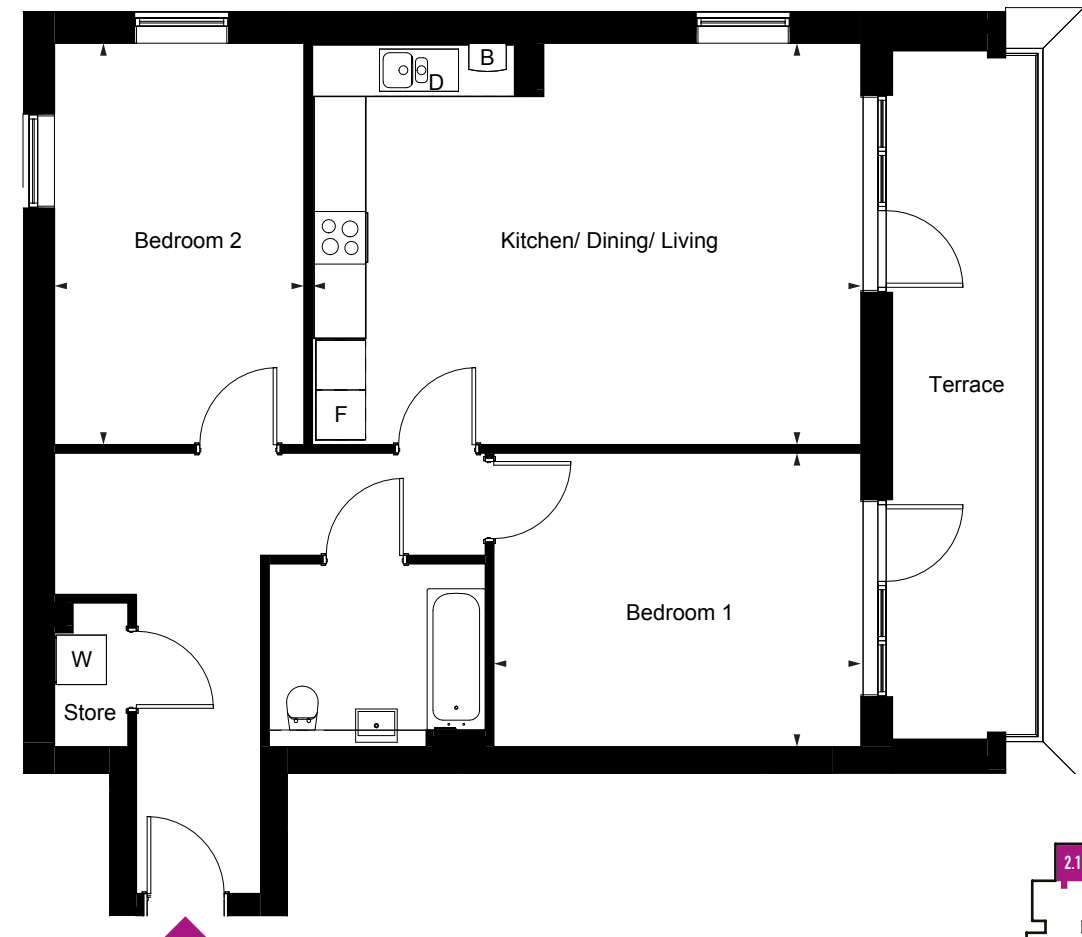
Type 26

Two bedroom apartment

Plot 2.15
Floor Second

Kitchen/Living/Dining	6.95m x 4.82m	22' x 16'
Bedroom 1	4.41m x 3.53m	14' x 12'
Bedroom 2	3.00m x 4.82m	10' x 16'
Total living space	85 sq m	911 sq ft

B - Boiler D - Dishwasher F - Fridge freezer W - Washer / Dryer



All floor plans in this brochure are for general guidance only. All room dimensions are subject to plus/minus 5% tolerance. Measurement are taken from plans representing the largest crosssection of each room - actual build may vary. Any dimensions shown are not intended to be used for carpet sizes, appliances, spaces or items of furniture. These particulars do not constitute any part of an offer or contract with regard to the specifications.

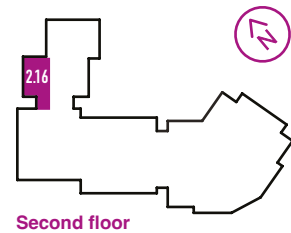
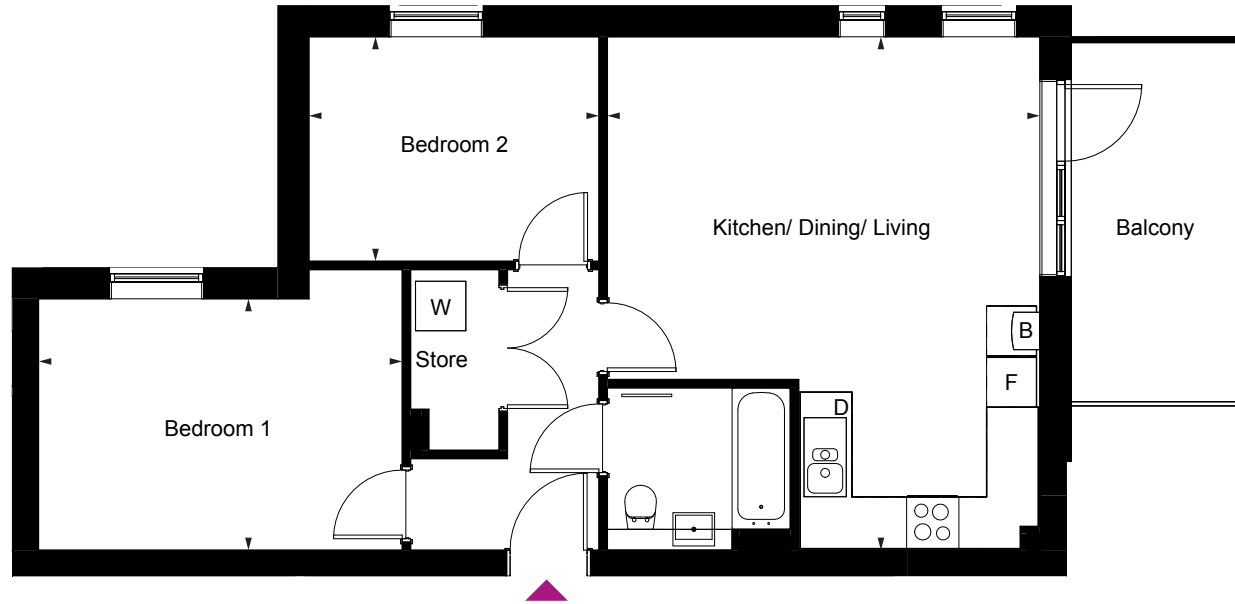
Type 48

Two bedroom apartment

Plot 2.16
Floor Second

Kitchen/Living/Dining	5.20m x 6.17m	17' x 20'
Bedroom 1	4.36m x 3.02m	14' x 10'
Bedroom 2	2.69m x 3.48m	11' x 9'
Total living space	63 sq m	679 sq ft

B - Boiler D - Dishwasher F - Fridge freezer W - Washer / Dryer



All floor plans in this brochure are for general guidance only. All room dimensions are subject to plus/minus 5% tolerance. Measurement are taken from plans representing the largest crosssection of each room - actual build may vary. Any dimensions shown are not intended to be used for carpet sizes, appliances, spaces or items of furniture. These particulars do not constitute any part of an offer or contract with regard to the specifications.

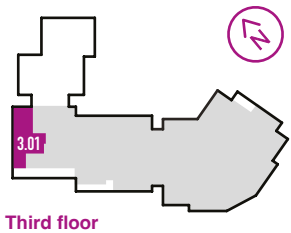
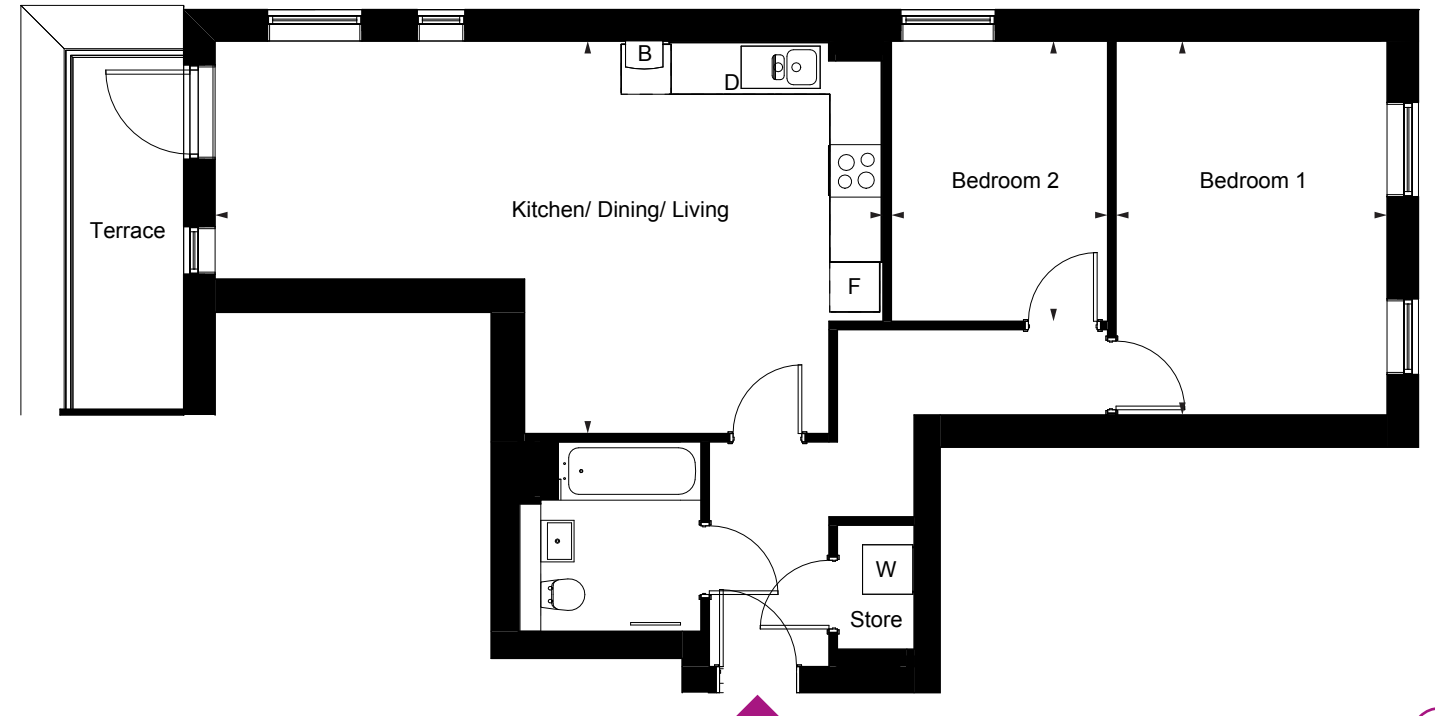
Type 47

Two bedroom apartment

Plot 3.01
Floor Third

Kitchen/Living/Dining	8.02m x 4.72m	26' x 15'
Bedroom 1	3.25m x 4.49m	9' x 11'
Bedroom 2	2.60m x 3.37m	11' x 15'
Total living space	69 sq m	740 sq ft

B - Boiler D - Dishwasher F - Fridge freezer W - Washer / Dryer



All floor plans in this brochure are for general guidance only. All room dimensions are subject to plus/minus 5% tolerance. Measurement are taken from plans representing the largest crosssection of each room - actual build may vary. Any dimensions shown are not intended to be used for carpet sizes, appliances, spaces or items of furniture. These particulars do not constitute any part of an offer or contract with regard to the specifications.

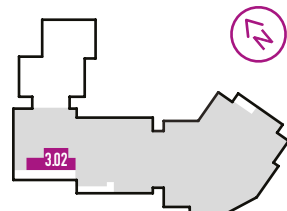
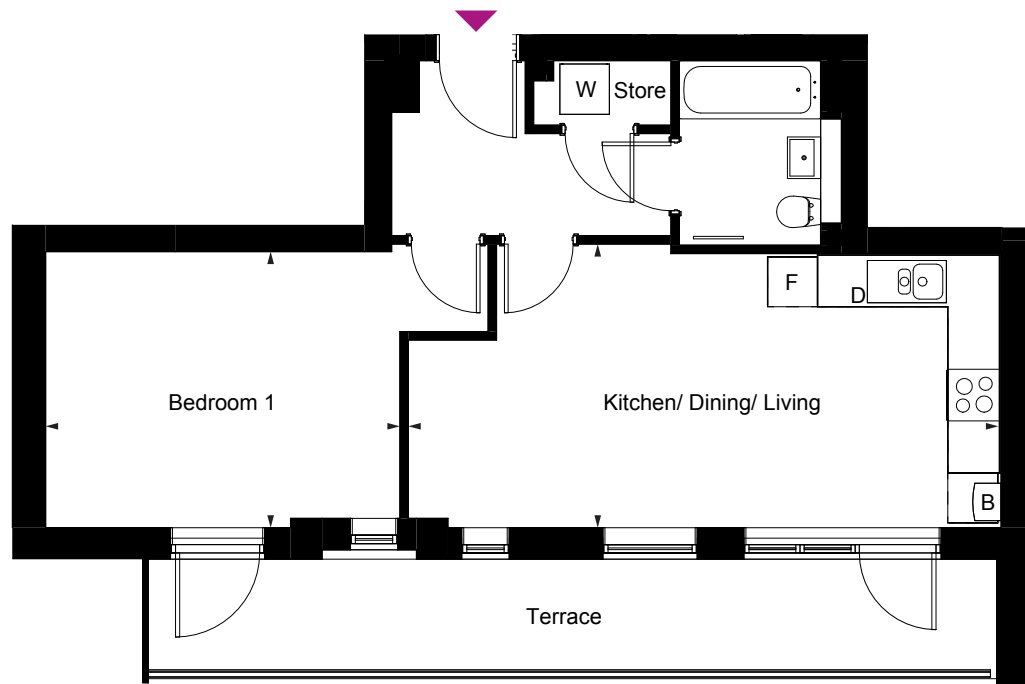
Type 27

One bedroom apartment

Plot 3.02
Floor Third

Kitchen/Living/Dining	7.12m x 3.41m	23' x 11'
Bedroom 1	4.25m x 3.32m	14' x 11"
Total living space	50 sq m	538 sq ft

B - Boiler D - Dishwasher F - Fridge freezer W - Washer / Dryer



Third floor

All floor plans in this brochure are for general guidance only. All room dimensions are subject to plus/minus 5% tolerance. Measurement are taken from plans representing the largest crosssection of each room - actual build may vary. Any dimensions shown are not intended to be used for carpet sizes, appliances, spaces or items of furniture. These particulars do not constitute any part of an offer or contract with regard to the specifications.

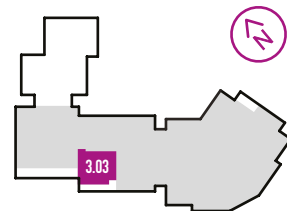
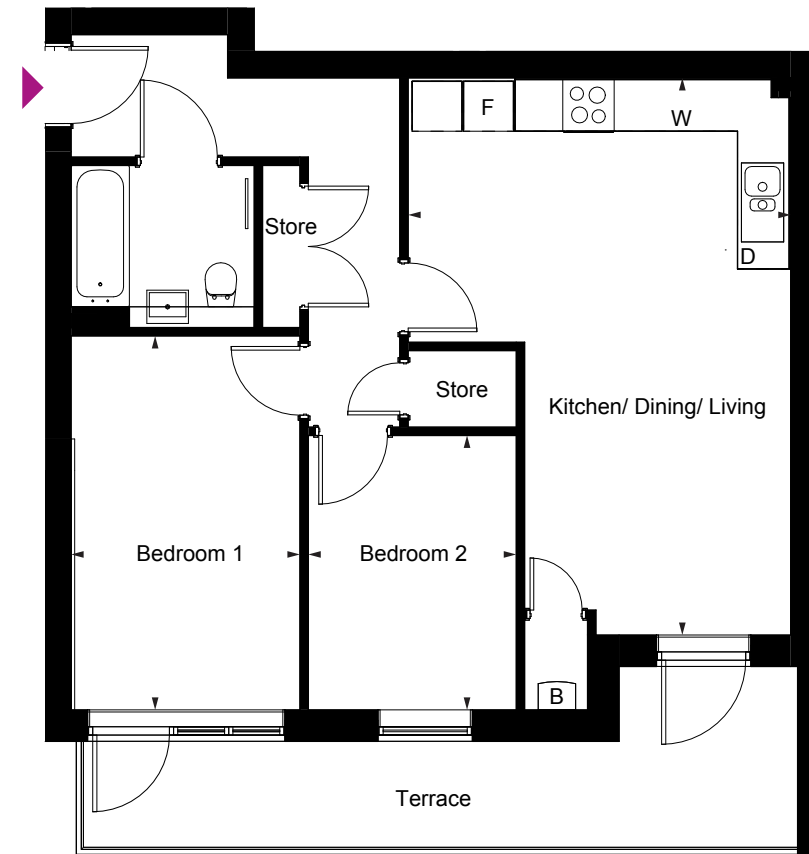
Type 28

Two bedroom apartment

Plot 3.03
Floor Third

Kitchen/Living/Dining	4.59m x 6.69m	15' x 22'
Bedroom 1	2.75m x 4.49m	9' x 15'
Bedroom 2	2.50m x 3.29m	8' x 11'
Total living space	65 sq m	695 sq ft

B - Boiler D - Dishwasher F - Fridge freezer W - Washer / Dryer



Third floor

All floor plans in this brochure are for general guidance only. All room dimensions are subject to plus/minus 5% tolerance. Measurement are taken from plans representing the largest crosssection of each room - actual build may vary. Any dimensions shown are not intended to be used for carpet sizes, appliances, spaces or items of furniture. These particulars do not constitute any part of an offer or contract with regard to the specifications.

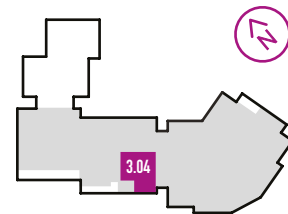
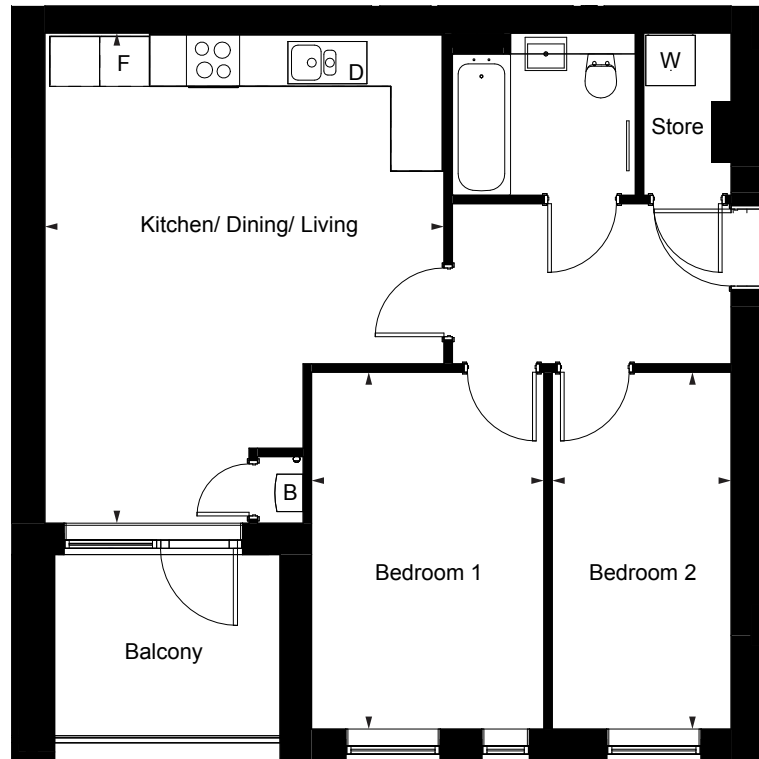
Type 29

Two bedroom apartment

Plot 3.04
Floor Third

Kitchen/Living/Dining	4.79m x 5.89m	16' x 19'
Bedroom 1	2.79m x 4.29m	9' x 14'
Bedroom 2	2.15m x 4.29m	7' x 14'
Total living space	61 sq m	657 sq ft

B - Boiler D - Dishwasher F - Fridge freezer W - Washer / Dryer



Third floor

All floor plans in this brochure are for general guidance only. All room dimensions are subject to plus/minus 5% tolerance. Measurement are taken from plans representing the largest crosssection of each room - actual build may vary. Any dimensions shown are not intended to be used for carpet sizes, appliances, spaces or items of furniture. These particulars do not constitute any part of an offer or contract with regard to the specifications.

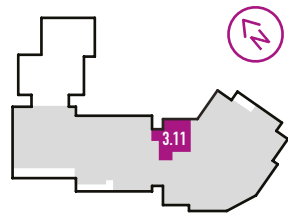
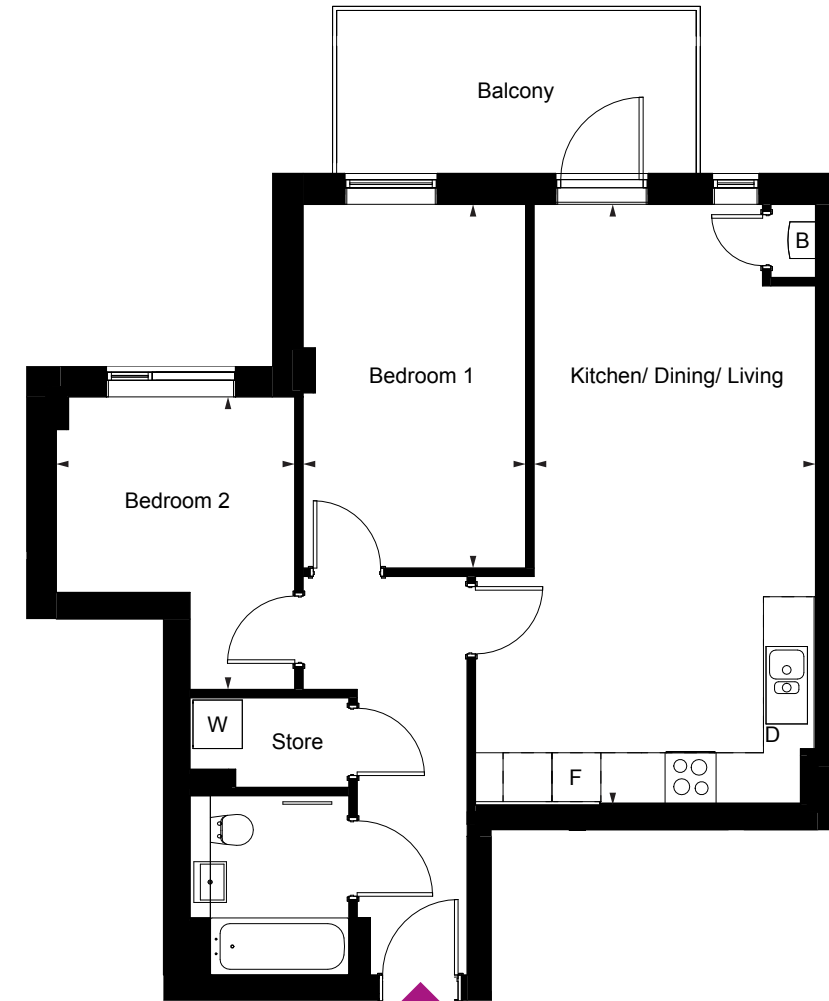
Type 30

Two bedroom apartment

Plot 3.11
Floor Third

Kitchen/Living/Dining	3.45m x 7.36m	11' x 22'
Bedroom 1	2.73m x 4.46m	9' x 15'
Bedroom 2	2.92m x 3.59m	10' x 12'
Total living space	65 sq m	694 sq ft

B - Boiler D - Dishwasher F - Fridge freezer W - Washer / Dryer



Third floor

All floor plans in this brochure are for general guidance only. All room dimensions are subject to plus/minus 5% tolerance. Measurement are taken from plans representing the largest crosssection of each room - actual build may vary. Any dimensions shown are not intended to be used for carpet sizes, appliances, spaces or items of furniture. These particulars do not constitute any part of an offer or contract with regard to the specifications.

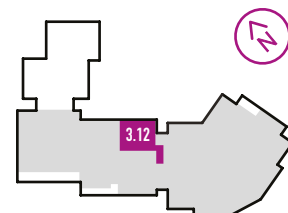
Type 31

Two bedroom apartment

Plot 3.12
Floor Third

Kitchen/Living/Dining	3.92m x 5.95m	10' x 25'
Bedroom 1	2.75m x 4.82m	7' x 14'
Bedroom 2	2.19m x 4.82m	9' x 14'
Total living space	65 sq m	703 sq ft

B - Boiler D - Dishwasher F - Fridge freezer W - Washer / Dryer



Third floor

All floor plans in this brochure are for general guidance only. All room dimensions are subject to plus/minus 5% tolerance. Measurement are taken from plans representing the largest crosssection of each room - actual build may vary. Any dimensions shown are not intended to be used for carpet sizes, appliances, spaces or items of furniture. These particulars do not constitute any part of an offer or contract with regard to the specifications.

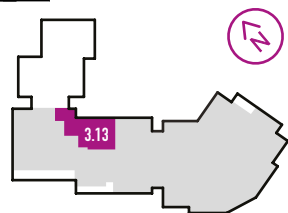
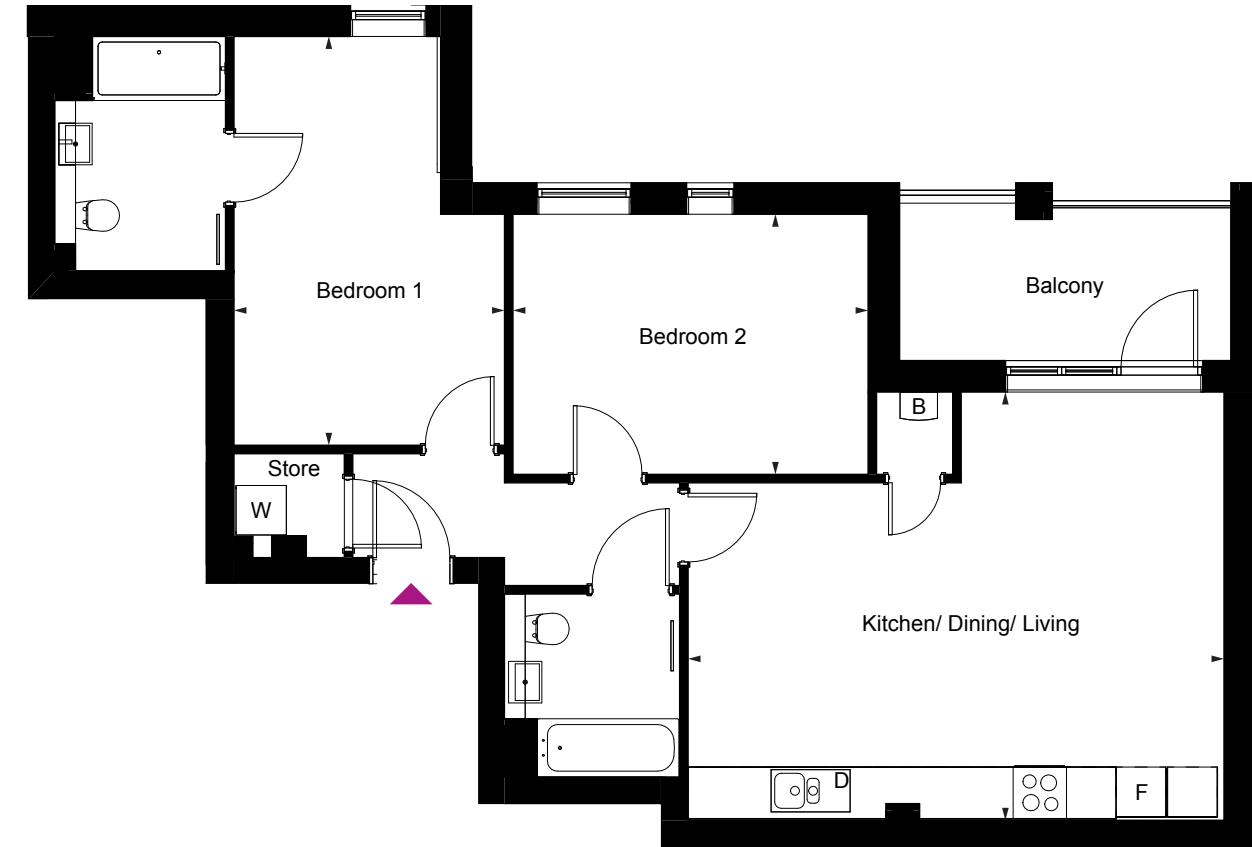
Type 32

Two bedroom apartment

Plot 3.13
Floor Third

Kitchen/Living/Dining	6.44m x 5.14m	21' x 17'
Bedroom 1	3.25m x 4.91m	11' x 16'
Bedroom 2	4.27m x 3.12m	14' x 10'
Total living space	73 sq m	790 sq ft

B - Boiler D - Dishwasher F - Fridge freezer W - Washer / Dryer



Third floor

All floor plans in this brochure are for general guidance only. All room dimensions are subject to plus/minus 5% tolerance. Measurement are taken from plans representing the largest crosssection of each room - actual build may vary. Any dimensions shown are not intended to be used for carpet sizes, appliances, spaces or items of furniture. These particulars do not constitute any part of an offer or contract with regard to the specifications.

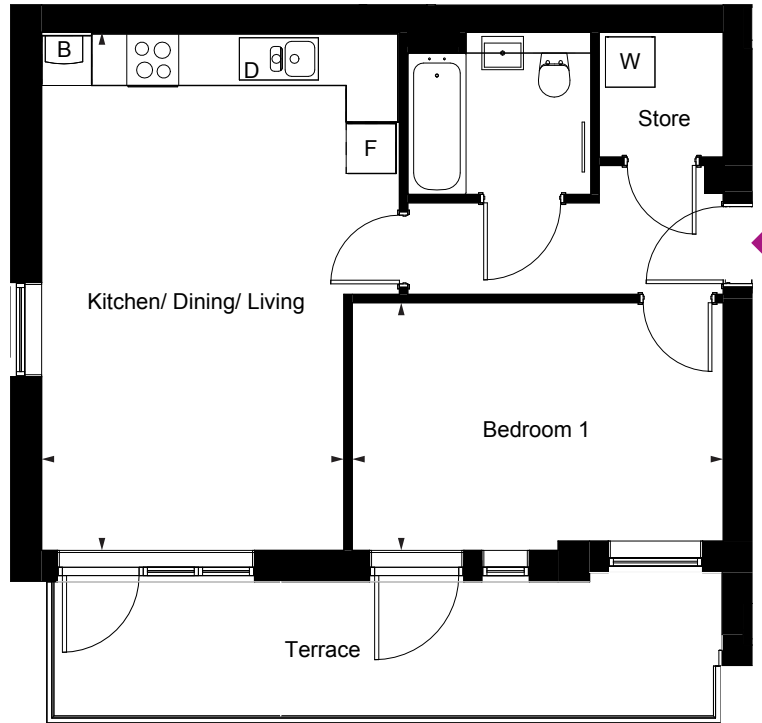
Type 33

One bedroom apartment

Plot 4.01
Floor Fourth

Kitchen/Living/Dining	3.63m x 6.22m	12' x 20'
Bedroom 1	4.46m x 2.97m	15' x 10'
Bedroom 2	8.03m x 1.66m	26' x 5'
Total living space	50 sq m	537 sq ft

B - Boiler D - Dishwasher F - Fridge freezer W - Washer / Dryer



Fourth floor

All floor plans in this brochure are for general guidance only. All room dimensions are subject to plus/minus 5% tolerance. Measurement are taken from plans representing the largest crosssection of each room - actual build may vary. Any dimensions shown are not intended to be used for carpet sizes, appliances, spaces or items of furniture. These particulars do not constitute any part of an offer or contract with regard to the specifications.

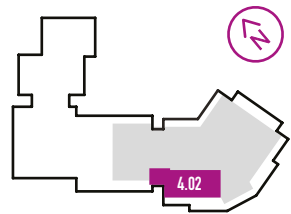
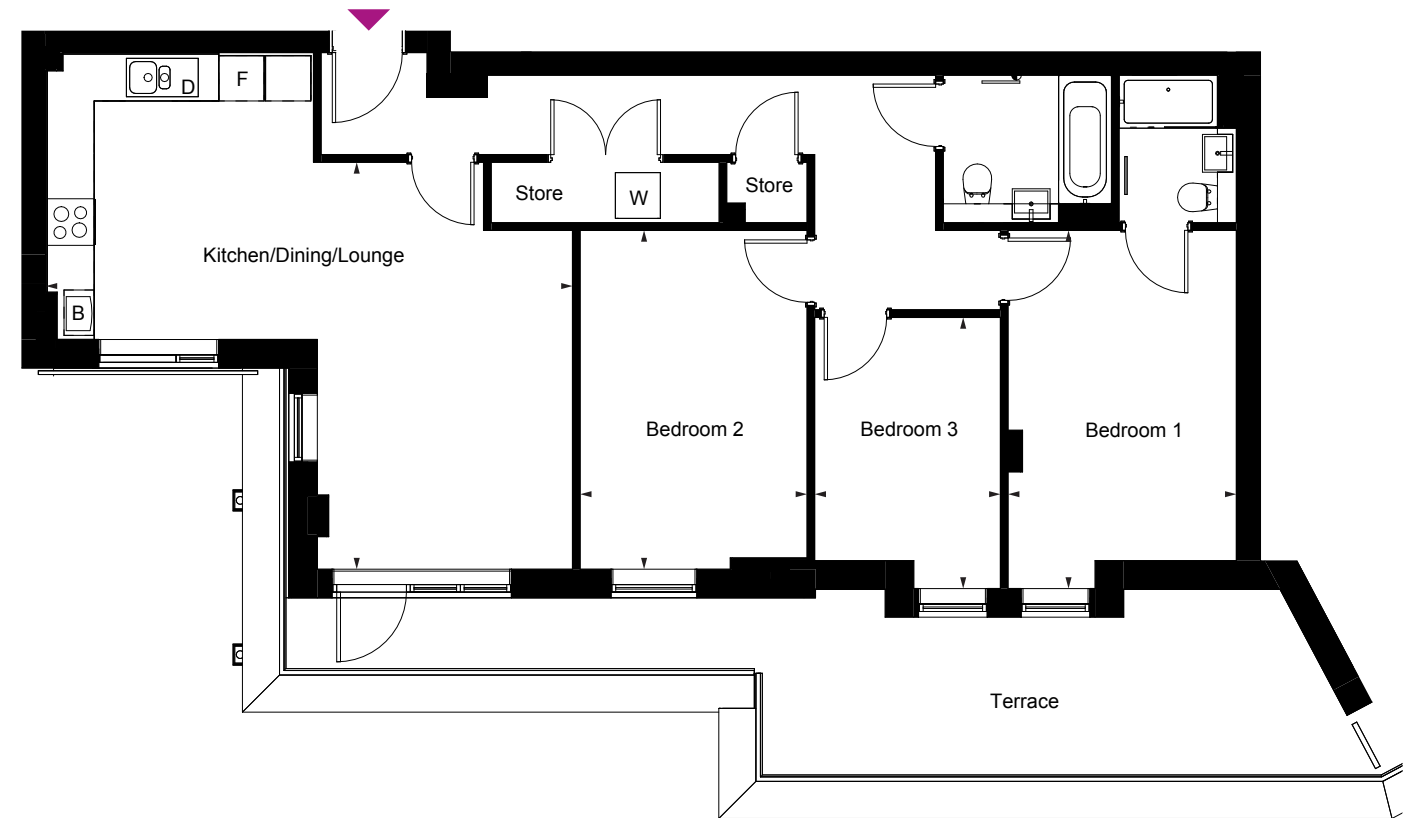
Type 34

Three bedroom apartment

Plot 4.02
Floor Fourth

Kitchen/Living/Dining	6.96m x 6.83m	23' x 22'
Bedroom 1	3.01m x 4.73m	10' x 16'
Bedroom 2	3.00m x 4.48m	10' x 15'
Bedroom 3	2.45m x 3.58m	8' x 12'
Total living space	91 sq m	979 sq ft

B - Boiler D - Dishwasher F - Fridge freezer W - Washer / Dryer



Fourth floor

All floor plans in this brochure are for general guidance only. All room dimensions are subject to plus/minus 5% tolerance. Measurement are taken from plans representing the largest crosssection of each room - actual build may vary. Any dimensions shown are not intended to be used for carpet sizes, appliances, spaces or items of furniture. These particulars do not constitute any part of an offer or contract with regard to the specifications.

Type 35

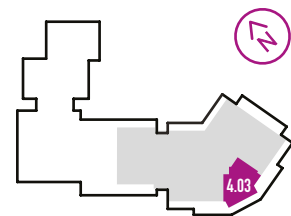
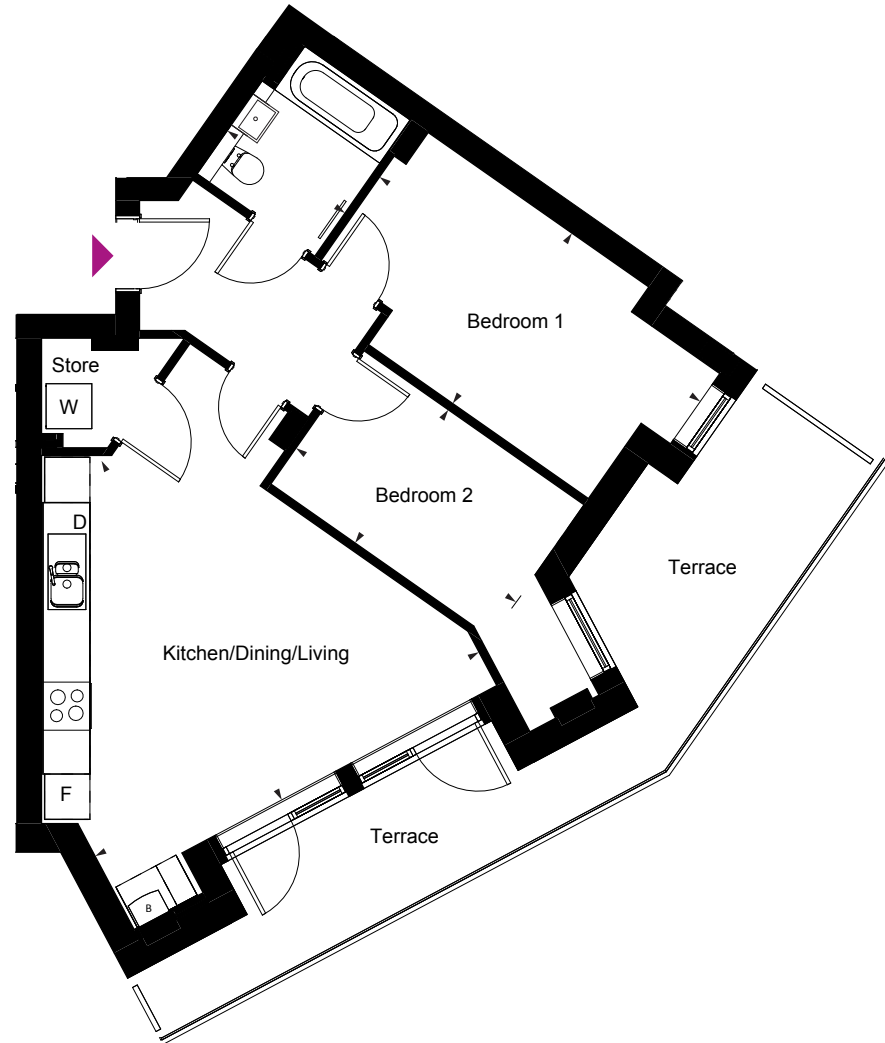
Two bedroom apartment

Plots
4.03

Floor
Fourth

Kitchen/Living/Dining	5.74m x 5.07m	19' x 17'
Bedroom 1	2.75m x 5.17m	9' x 74'
Bedroom 2	2.15m x 3.55m	7' x 12'
Total living space	61.5 sq m	662 sq ft

B - Boiler D - Dishwasher F - Fridge freezer W - Washer / Dryer



Fourth floor

All floor plans in this brochure are for general guidance only. All room dimensions are subject to plus/minus 5% tolerance. Measurement are taken from plans representing the largest crosssection of each room - actual build may vary. Any dimensions shown are not intended to be used for carpet sizes, appliances, spaces or items of furniture. These particulars do not constitute any part of an offer or contract with regard to the specifications.

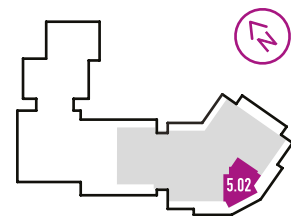
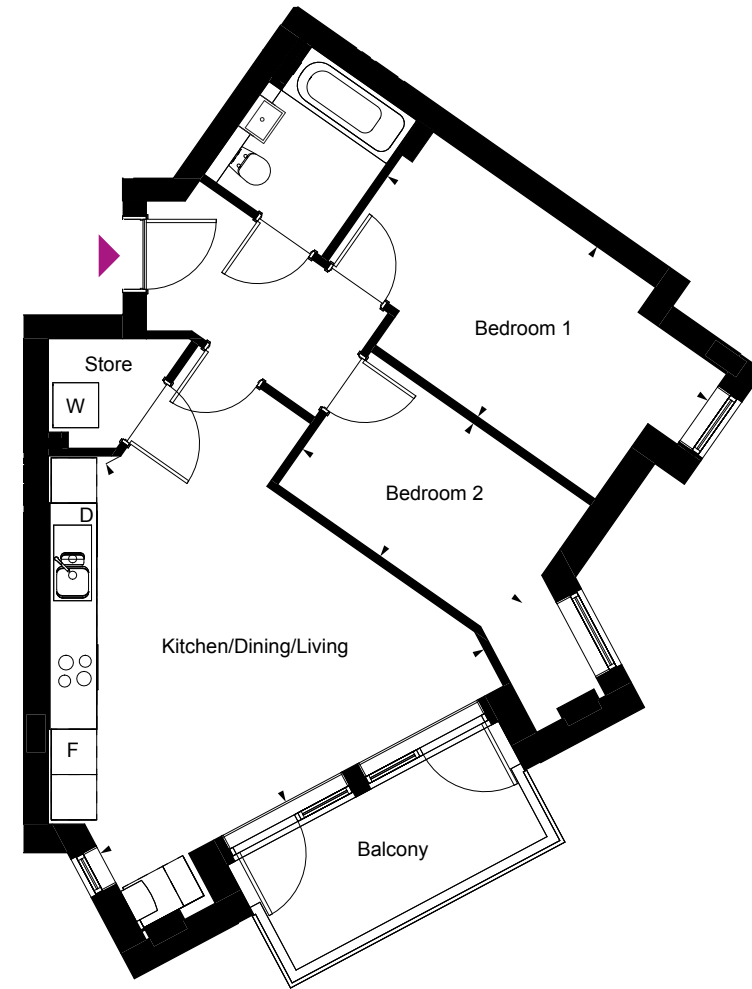
Type 35A

Two bedroom apartment

Plot 5.02
Floor Fifth

Kitchen/Living/Dining	5.74m x 5.07m	19' x 17'
Bedroom 1	2.75m x 5.17m	9' x 74'
Bedroom 2	2.15m x 3.55m	7' x 12'
Total living space	61.5 sq m	662 sq ft

B - Boiler D - Dishwasher F - Fridge freezer W - Washer / Dryer



Fifth floor

All floor plans in this brochure are for general guidance only. All room dimensions are subject to plus/minus 5% tolerance. Measurement are taken from plans representing the largest crosssection of each room - actual build may vary. Any dimensions shown are not intended to be used for carpet sizes, appliances, spaces or items of furniture. These particulars do not constitute any part of an offer or contract with regard to the specifications.

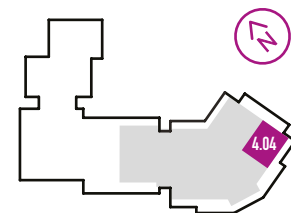
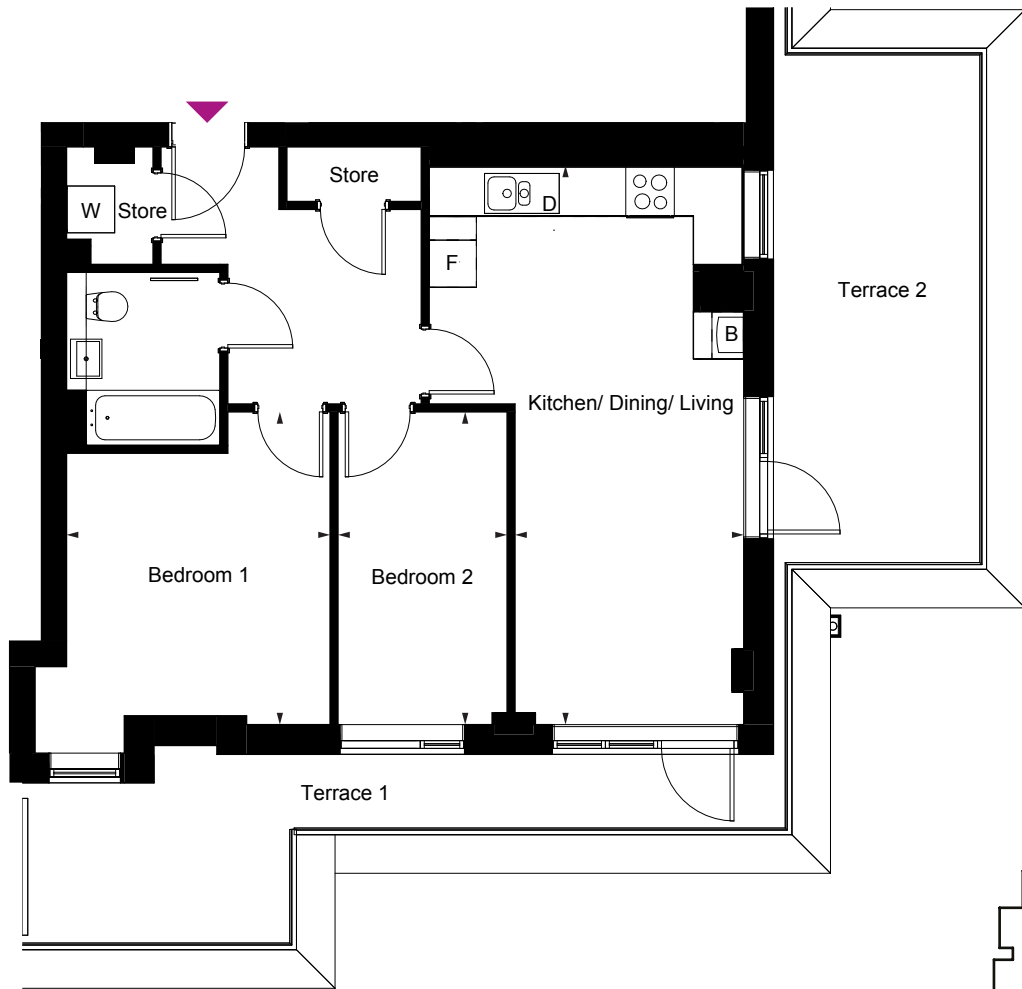
Type 36

Two bedroom apartment

Plot 4.04
Floor Fourth

Kitchen/Living/Dining	2.90m x 7.11m	10' x 23'
Bedroom 1	3.35m x 3.97m	11' x 13'
Bedroom 2	2.15m x 3.97m	7' x 13'
Total living space	63 sq m	677 sq ft

B - Boiler D - Dishwasher F - Fridge freezer W - Washer / Dryer



Fourth floor

All floor plans in this brochure are for general guidance only. All room dimensions are subject to plus/minus 5% tolerance. Measurement are taken from plans representing the largest crosssection of each room - actual build may vary. Any dimensions shown are not intended to be used for carpet sizes, appliances, spaces or items of furniture. These particulars do not constitute any part of an offer or contract with regard to the specifications.

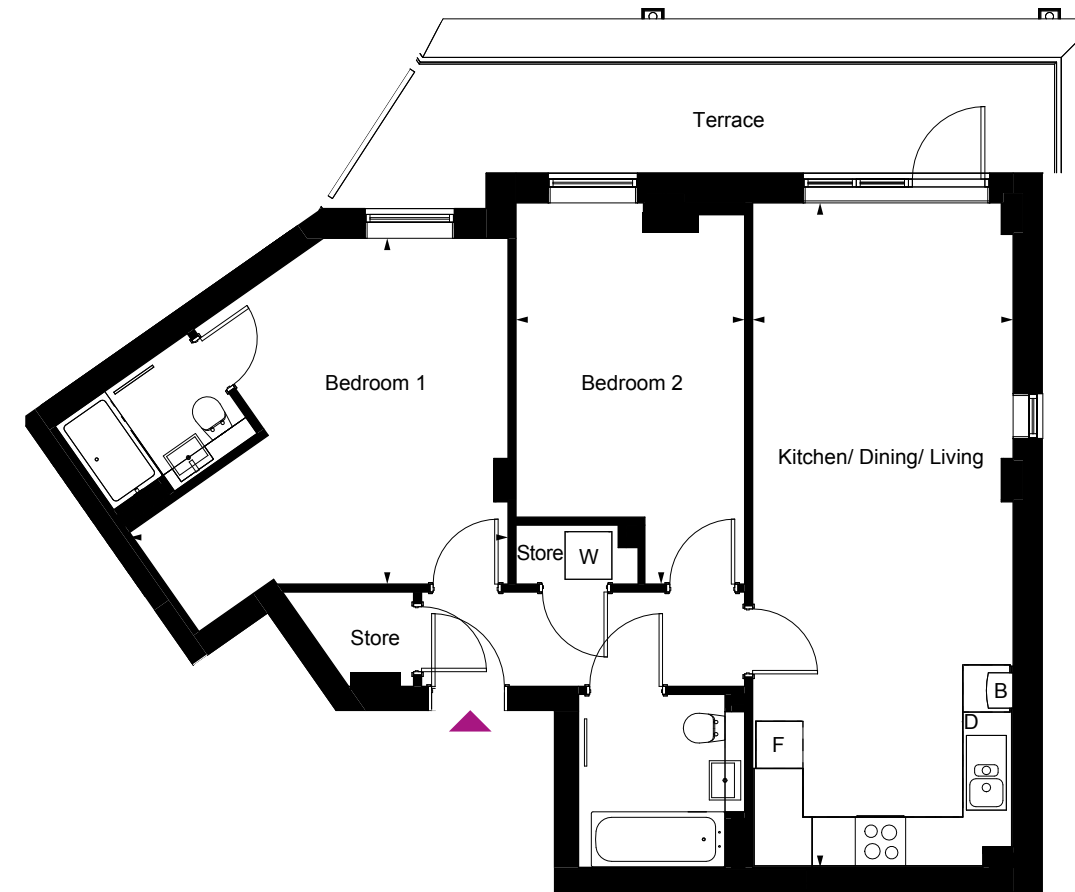
Type 37

Two bedroom apartment

Plot 4.05
Floor Fourth

Kitchen/Living/Dining	3.31m x 8.44m	11' x 28'
Bedroom 1	4.81m x 4.39m	16' x 14'
Bedroom 2	2.90m x 4.84m	10' x 16'
Total living space	74 sq m	795 sq ft

B - Boiler D - Dishwasher F - Fridge freezer W - Washer / Dryer



Fourth floor

All floor plans in this brochure are for general guidance only. All room dimensions are subject to plus/minus 5% tolerance. Measurement are taken from plans representing the largest crosssection of each room - actual build may vary. Any dimensions shown are not intended to be used for carpet sizes, appliances, spaces or items of furniture. These particulars do not constitute any part of an offer or contract with regard to the specifications.

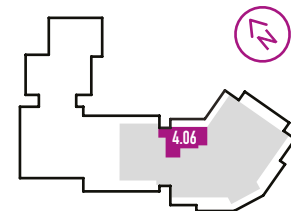
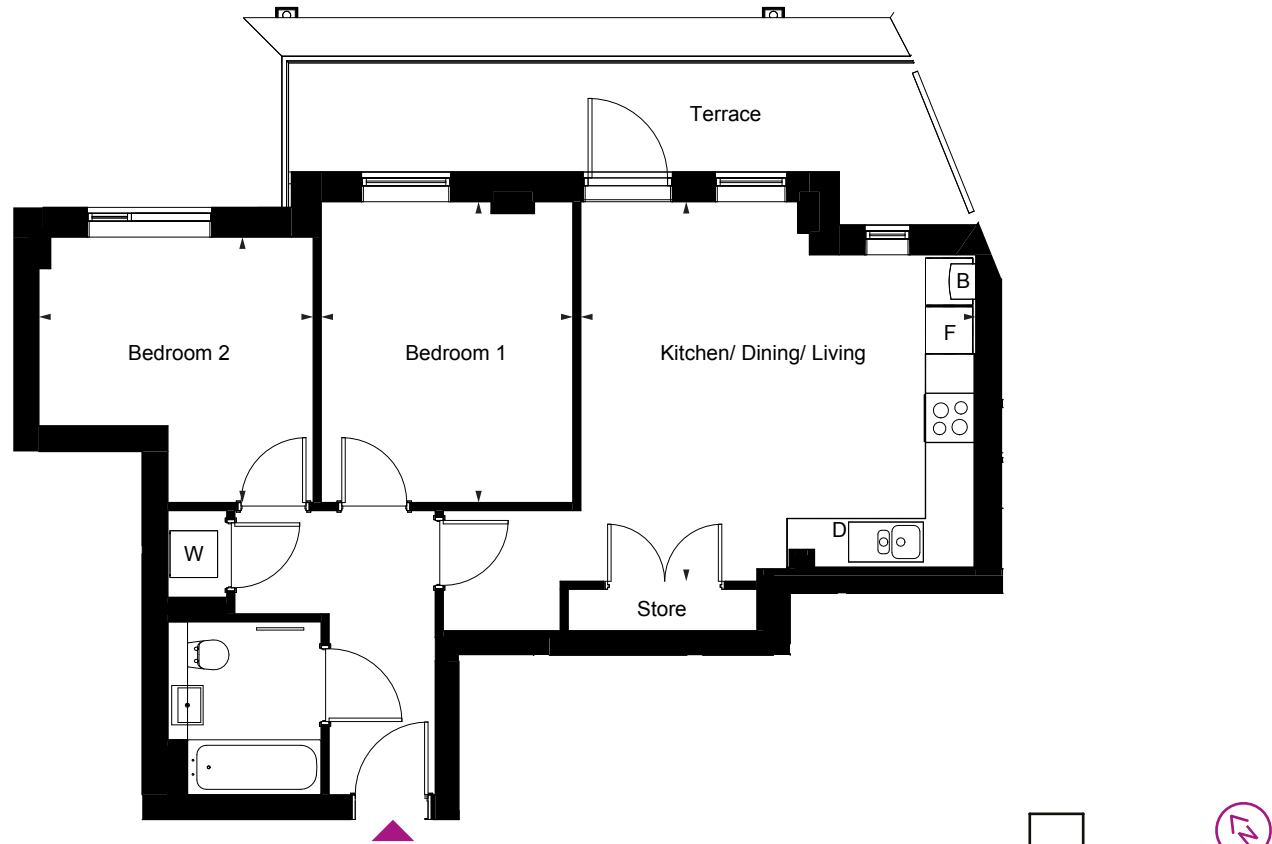
Type 38

Two bedroom apartment

Plot 4.06
Floor Fourth

Kitchen/Living/Dining	5.02m x 5.45m	16' x 18'
Bedroom 1	3.20m x 3.82m	10' x 13'
Bedroom 2	3.48m x 3.37m	11' x 11'
Total living space	62 sq m	666 sq ft

B - Boiler D - Dishwasher F - Fridge freezer W - Washer / Dryer



Fourth floor

All floor plans in this brochure are for general guidance only. All room dimensions are subject to plus/minus 5% tolerance. Measurement are taken from plans representing the largest crosssection of each room - actual build may vary. Any dimensions shown are not intended to be used for carpet sizes, appliances, spaces or items of furniture. These particulars do not constitute any part of an offer or contract with regard to the specifications.

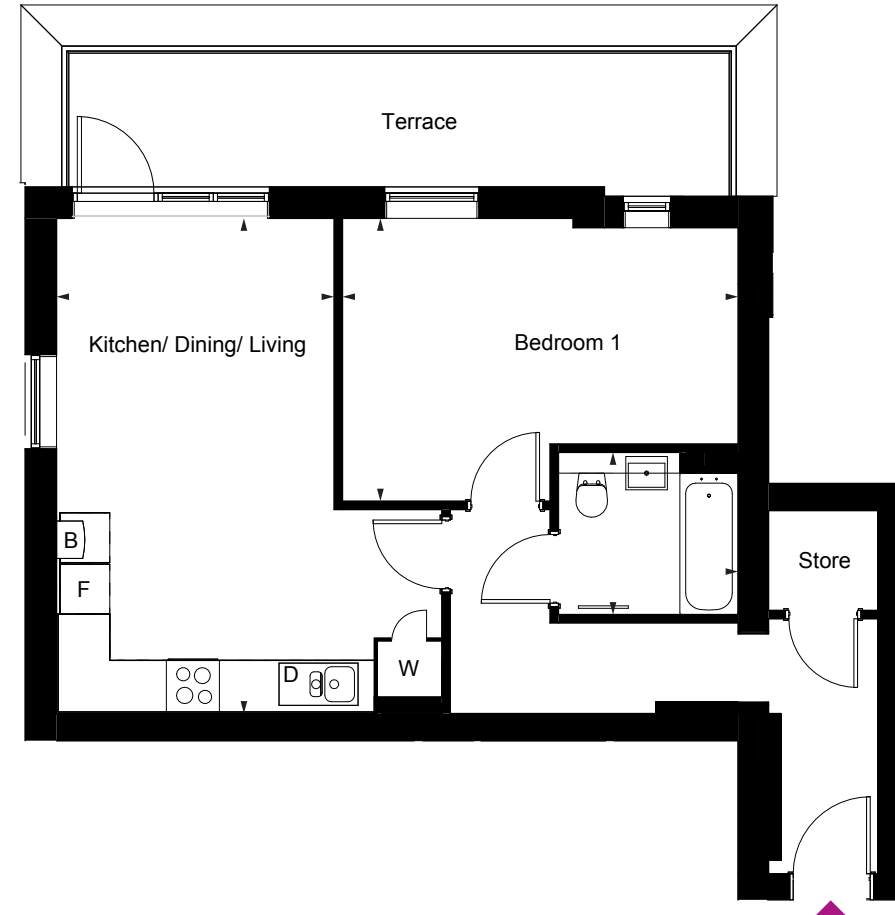
Type 39

One bedroom apartment

Plot 4.07
Floor Fourth

Kitchen/Living/Dining	3.33m x 5.95m	11' x 20'
Bedroom 1	4.75m x 3.40m	16' x 11'
Total living space	53 sq m	568 sq ft

B - Boiler D - Dishwasher F - Fridge freezer W - Washer / Dryer



Fourth floor

All floor plans in this brochure are for general guidance only. All room dimensions are subject to plus/minus 5% tolerance. Measurement are taken from plans representing the largest crosssection of each room - actual build may vary. Any dimensions shown are not intended to be used for carpet sizes, appliances, spaces or items of furniture. These particulars do not constitute any part of an offer or contract with regard to the specifications.

Type 40

Two bedroom apartment

Plot 5.01
Floor Fifth

Kitchen/Living/Dining	5.74m x 6.53m	19' x 21'
Bedroom 1	3.15m x 4.48m	10' x 15'
Bedroom 2	3.06m x 4.48m	10' x 15'
Total living space	70 sq m	758 sq ft

B - Boiler D - Dishwasher F - Fridge freezer W - Washer / Dryer



Fifth floor

All floor plans in this brochure are for general guidance only. All room dimensions are subject to plus/minus 5% tolerance. Measurement are taken from plans representing the largest crosssection of each room - actual build may vary. Any dimensions shown are not intended to be used for carpet sizes, appliances, spaces or items of furniture. These particulars do not constitute any part of an offer or contract with regard to the specifications.

Type 41

One bedroom apartment

Plot 5.03
Floor Fifth

Kitchen/Living/Dining	5.35m x 5.76m	18' x 19'
Bedroom 1	5.71m x 2.75m	19' x 9'
Total living space	51 sq m	547 sq ft

B - Boiler D - Dishwasher F - Fridge freezer W - Washer / Dryer



Fifth floor

All floor plans in this brochure are for general guidance only. All room dimensions are subject to plus/minus 5% tolerance. Measurement are taken from plans representing the largest crosssection of each room - actual build may vary. Any dimensions shown are not intended to be used for carpet sizes, appliances, spaces or items of furniture. These particulars do not constitute any part of an offer or contract with regard to the specifications.

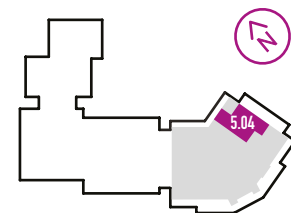
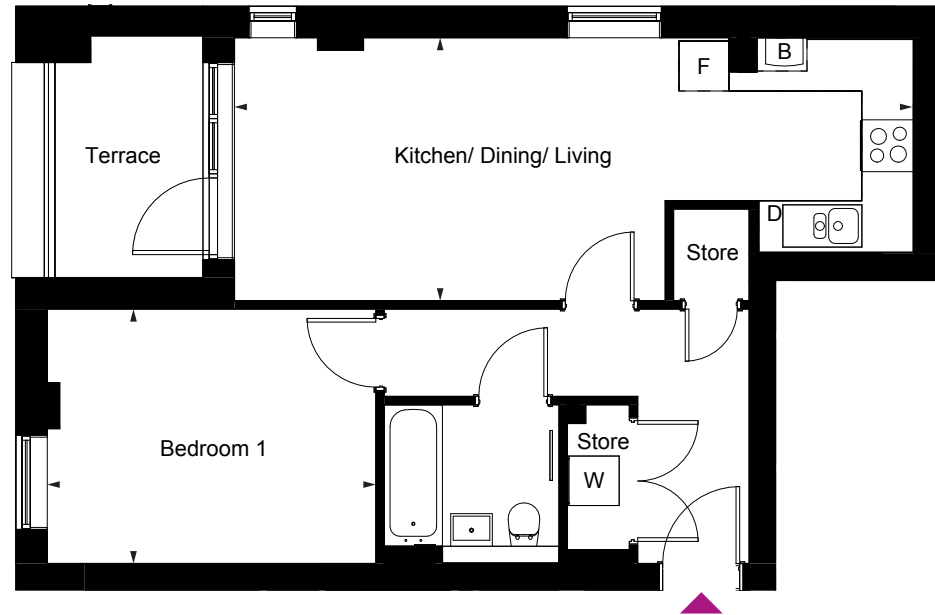
Type 42

One bedroom apartment

Plot 5.04
Floor Fifth

Kitchen/Living/Dining	8.18m x 3.16m	27' x 10'
Bedroom 1	3.95m x 3.05m	13' x 10'
Total living space	51 sq m	544 sq ft

B - Boiler D - Dishwasher F - Fridge freezer W - Washer / Dryer



Fifth floor

All floor plans in this brochure are for general guidance only. All room dimensions are subject to plus/minus 5% tolerance. Measurement are taken from plans representing the largest crosssection of each room - actual build may vary. Any dimensions shown are not intended to be used for carpet sizes, appliances, spaces or items of furniture. These particulars do not constitute any part of an offer or contract with regard to the specifications.

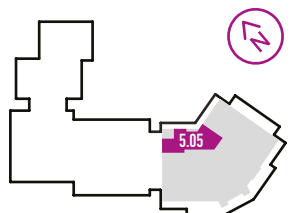
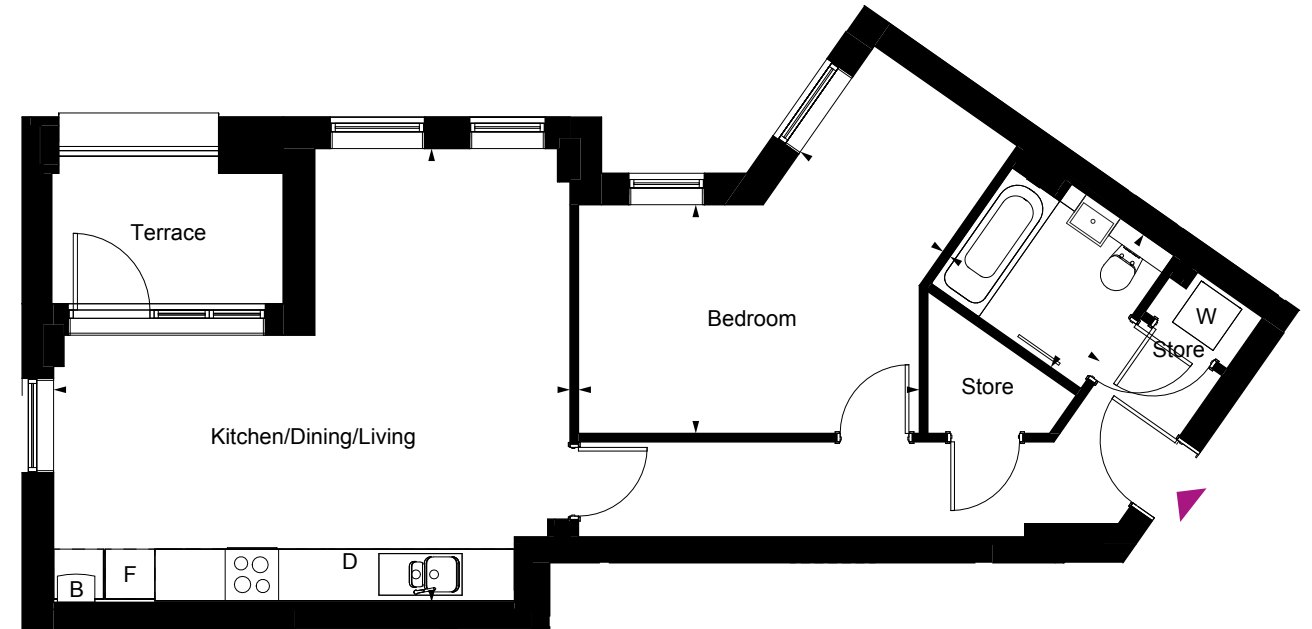
Type 43

One bedroom apartment

Plot 5.05
Floor Fifth

Kitchen/Living/Dining	6.20m x 5.45m	20' x 18'
Bedroom 1	4.09m x 2.75m	13' x 9'
Total living space	62 sq m	667 sq ft

B - Boiler D - Dishwasher F - Fridge freezer W - Washer / Dryer



Fifth floor

All floor plans in this brochure are for general guidance only. All room dimensions are subject to plus/minus 5% tolerance. Measurement are taken from plans representing the largest crosssection of each room - actual build may vary. Any dimensions shown are not intended to be used for carpet sizes, appliances, spaces or items of furniture. These particulars do not constitute any part of an offer or contract with regard to the specifications.

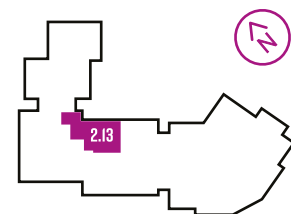
Type 21A

Three bedroom apartment

Plot 2.13
Floor Second

Kitchen/Living/Dining	3.20m x 7.51m	10' x 25'
Bedroom 1	3.29m x 4.99m	11' x 16'
Bedroom 2	3.51m x 3.35m	12' x 11'
Bedroom 3	2.40m x 3.35m	8' x 11'
Total living space	90 sq m	972 sq ft

B - Boiler D - Dishwasher F - Fridge freezer W - Washer / Dryer



Second floor

All floor plans in this brochure are for general guidance only. All room dimensions are subject to plus/minus 5% tolerance. Measurement are taken from plans representing the largest crosssection of each room - actual build may vary. Any dimensions shown are not intended to be used for carpet sizes, appliances, spaces or items of furniture. These particulars do not constitute any part of an offer or contract with regard to the specifications.



Rent and save before you buy

A simple step towards home ownership

With SO Flexi you pay less rent while you save to buy your home with Shared Ownership. It's secure and simple, so you can relax and get on with life. Here's how it works...

- Choose a great home at the exciting new SO Flexi Acton development, or find out about other SO Flexi homes in great locations at soflexi.co.uk
- Check you're eligible and apply online at soflexi.co.uk – our team are on hand to help
- Live in your new home for at least two years, paying a lower-than-market rent to help you save. There are the other usual costs too, like household utility bills
- Build up the deposit to buy your home with Shared Ownership. We'll help you work out how much you'll need, so you have a goal to work towards
- When you're ready to buy your Shared Ownership home, the friendly SO Resi team will help you apply and guide you at every step

MTVH has taken all reasonable care in the preparation of the information given in this brochure. However, this information is subject to change and has been prepared solely for the purpose of providing general guidance. MTVH does not warrant the accuracy or completeness of this information. Particulars are given for illustrative purposes only. MTVH undertakes continuous product development and any information given relating to our products may vary from time to time. The information and particulars set out within this brochure do not constitute part of a formal offer invitation or contract to acquire the relevant property. For the reasons mentioned above, no information contained in this brochure is to be relied upon. In particular, all plans prospectus, descriptions, dimensions and measurements are approximate and provided for guidance only. Such information is given without responsibility. Such information is given without responsibility on the part of MTVH.

March 2024