

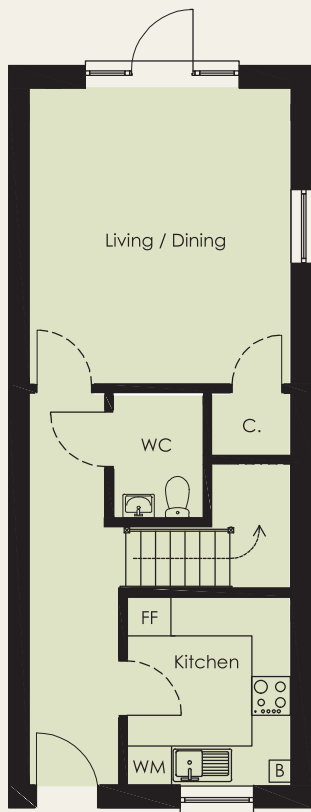
# ROSEWOOD PLACE



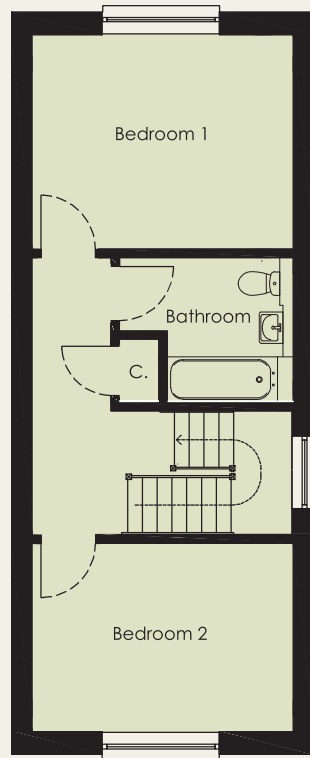
## THREE BEDROOM HOUSE

Plot 6 | Total SQM: 110

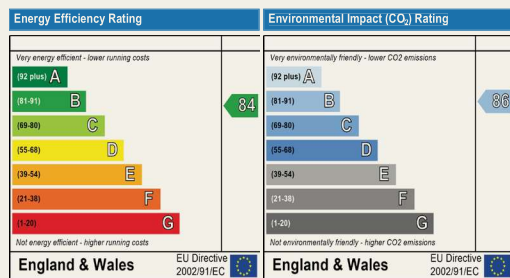
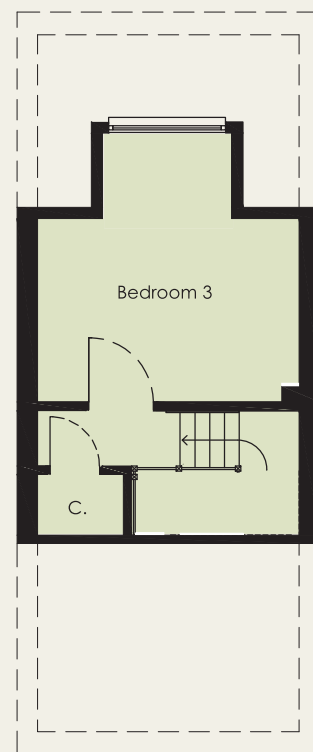
GROUND FLOOR



FIRST FLOOR



SECOND FLOOR



Kitchen 2.5M X 2.9M  
 Living/ Dining 4M X 4.5M  
  
 Bedroom 1 4M X 3.3M  
 Bedroom 2 4M X 2.9M  
 Bedroom 3 4M X 4.1M

Floor plans shown are indicative only. All room sizes are approximate with maximum dimensions of finished measurements. Measurements have been taken into the kitchen units and are not intended for carpet sizes or items of furniture. Room layouts may be subject to minor modifications. Kitchen and bathroom layouts shown are indicative only.