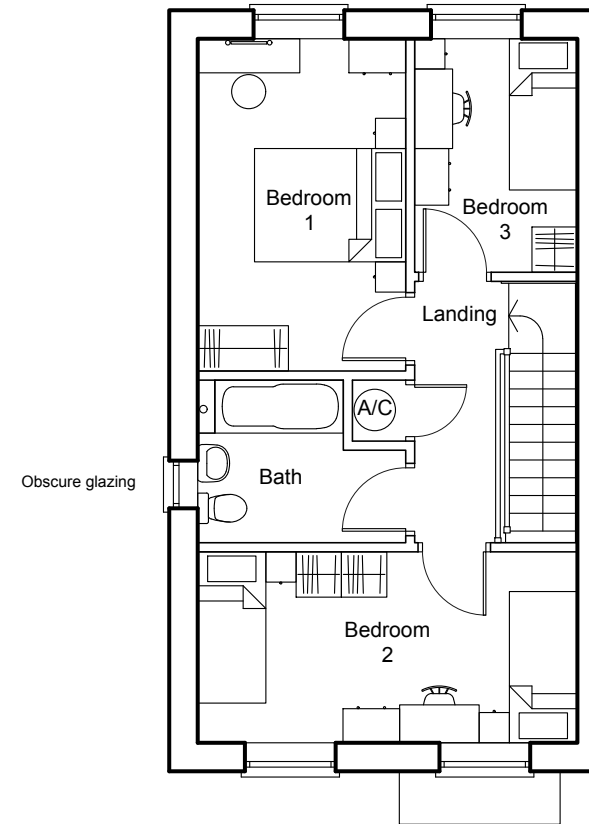


Ground Floor



First Floor

Type AF4
3 Bed / 5 Person House
Affordable

93.48 sq.m.
1006 sq.ft.

Plots: 7 & 29 - As drawn
Plots: 4 & 27 - Handed



Rev. A 27.06.22 Window amended.

 CMYK (Planning & Design) Ltd 6 The Gavel Centre, Porters Wood St Albans, Herts. AL3 6PQ t: 01727 830123 e: email@cmykuk.net www.cmykuk.net	Riverdale <small>DEVELOPMENTS LTD</small>	Job: Phase 3, Crowborough	
	Riverdale Developments Ltd, Riverdale House, Unit 1, Beverley Industrial Estate, 190-192 Garth Road, Morden, Surrey SM4 4LU	Title: Type AF4 - Floor Plans	
	For:	Scale: 1:100 @ A3	Date: Sept '21
	Drg No: 2010 / P / 20.101	Rev: A	