

Prices  
from  
**£159,250**

# TIGER MOTH GARDENS

Spitfire Close, Booker, High Wycombe, Buckinghamshire, SL7 3FN

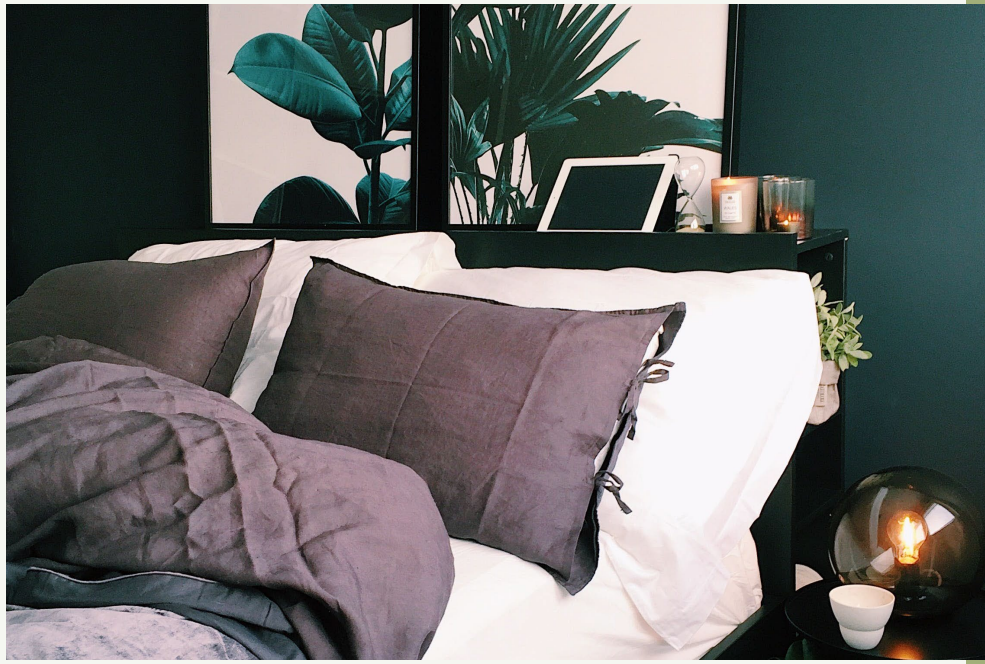
A brand new development of 1 & 2 bedroom apartments and 2 & 3 bedroom houses

Available through Shared Ownership

 **ParadigmLiving**

£ Prices from £159,250 (35% Share) Houses

% Shares available 35%-75% Houses



*Tiger Moth Gardens is a brand new development of 1 & 2-bedroom apartments and 2 & 3-bedroom houses. Located on the outskirts of High Wycombe, the properties are ideally positioned for the M40 Motorway and just a short drive from High Wycombe town centre and Marlow High Street.*



## TIGER MOTH GARDENS KEY FEATURES

Bathroom suite and  
thermostatic shower

Carpet throughout living areas

Vinyl flooring in kitchen,  
bathroom & downstairs toilet, if  
applicable

Gas central heating

Allocated parking

Fitted kitchen with integrated  
oven and gas hob

Freestanding washing machine  
and fridge freezer

These particulars do not constitute any part of an offer or contract. Any intended purchasers must satisfy themselves as to the correctness of each of the statements contained in these particulars. All floor layouts may be subject to changes. The dimensions given on the plan are subject to minor variations intended for guidance only and are not to be used for carpets, appliances or items of furniture.



## 2 Bedroom Semi-Detached House

Plots 34 & 36

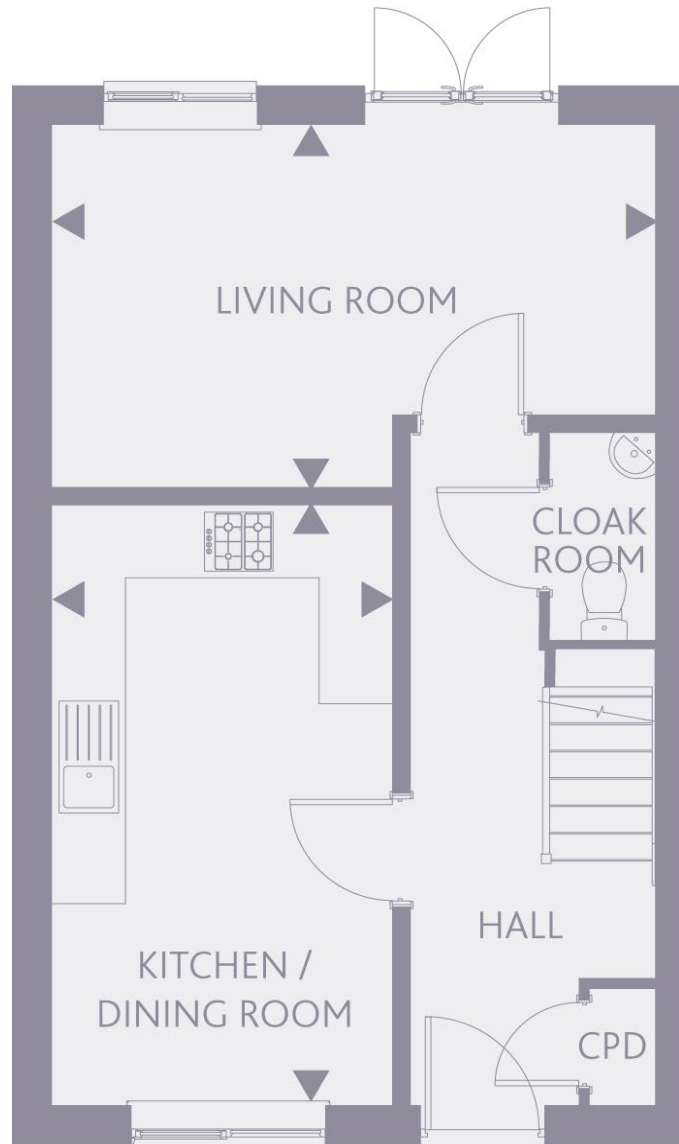
*Plot 36 is handed*

KITCHEN / DINING ROOM  
16'5" x 9'3"      5.01m x 2.83m

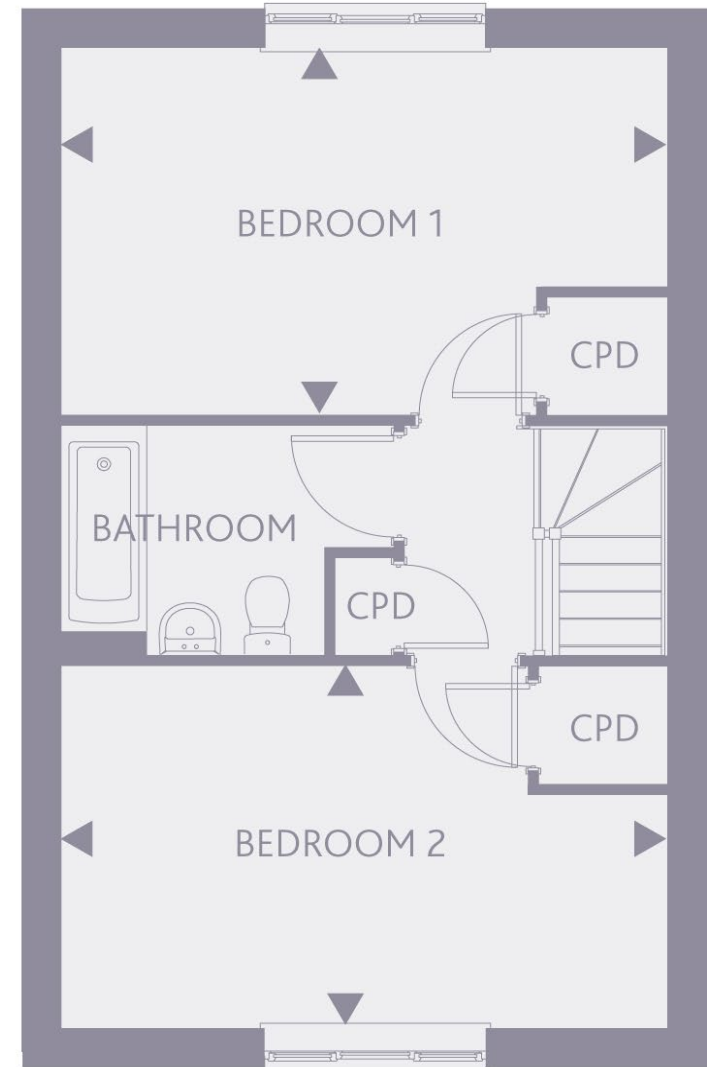
LIVING ROOM  
9'11" x 16'4"      3.04m x 4.98m

BEDROOM 1  
10'1" x 16'4"      3.08m x 4.98m

BEDROOM 2  
9'10" x 16'4"      3.02m x 4.98m



GROUND FLOOR



FIRST FLOOR

## 3 Bedroom Semi-Detached House Plots 32 & 38

*Plot 38 is handed*

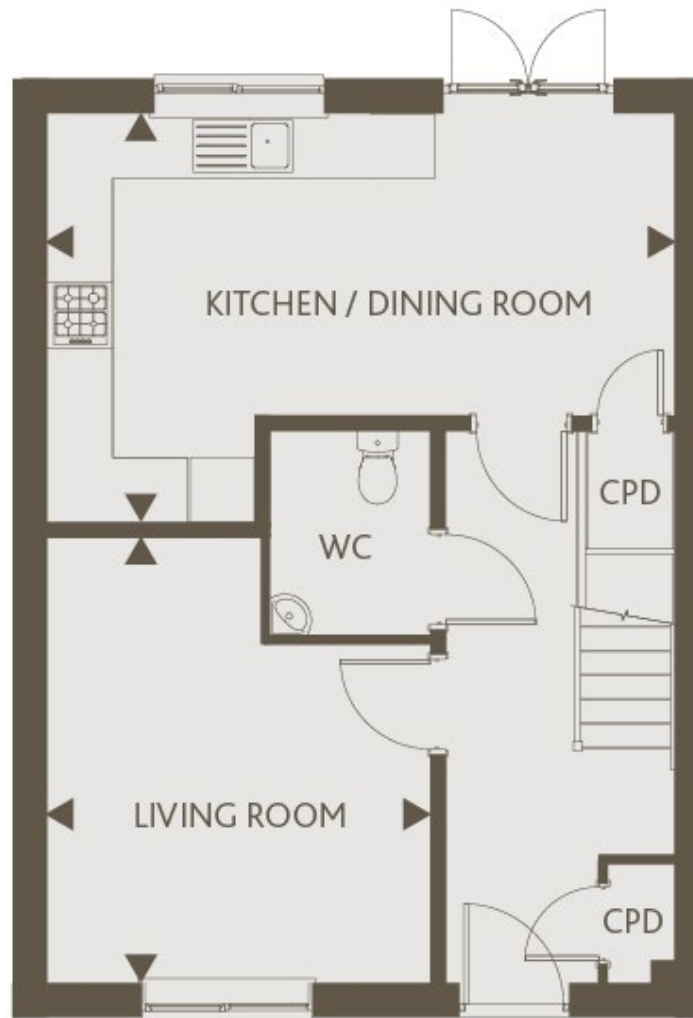
KITCHEN / DINING ROOM  
12'7" x 19'3" 3.86m x 5.88m

LIVING ROOM  
13'9" x 11'10" 4.20m x 3.61m

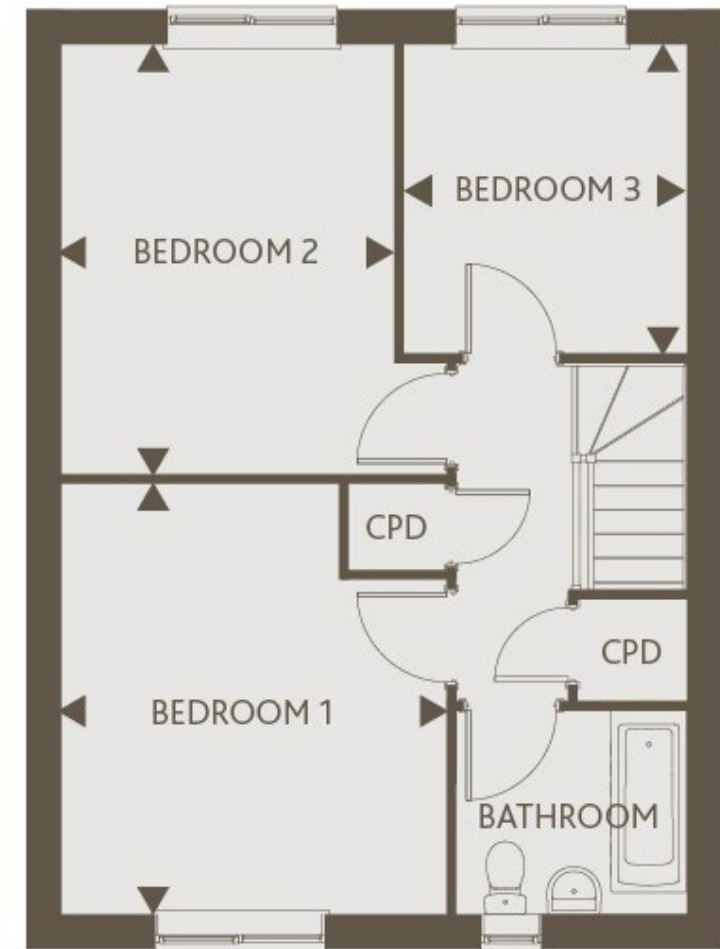
BEDROOM 1  
13'3" x 11'10" 4.05m x 3.63m

BEDROOM 2  
13'3" x 10'3" 4.04m x 3.14m

BEDROOM 3  
9'6" x 8'9" 2.91m x 2.67m



GROUND FLOOR



FIRST FLOOR

## 3 Bedroom Semi-Detached House

Plots 31, 33, 37 & 39

*Plots 37 & 39 are handed*

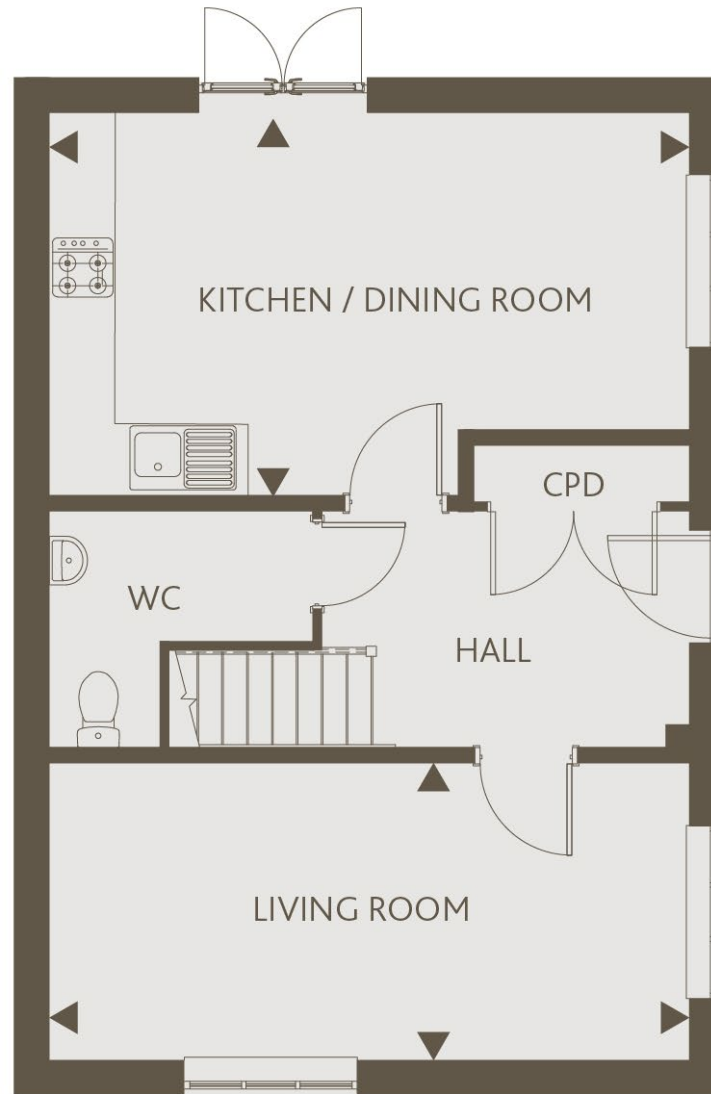
KITCHEN / DINING ROOM  
9'7" x 19'4"    2.94m x 5.91m

LIVING ROOM  
9'0" x 19'4"    2.76m x 5.91m

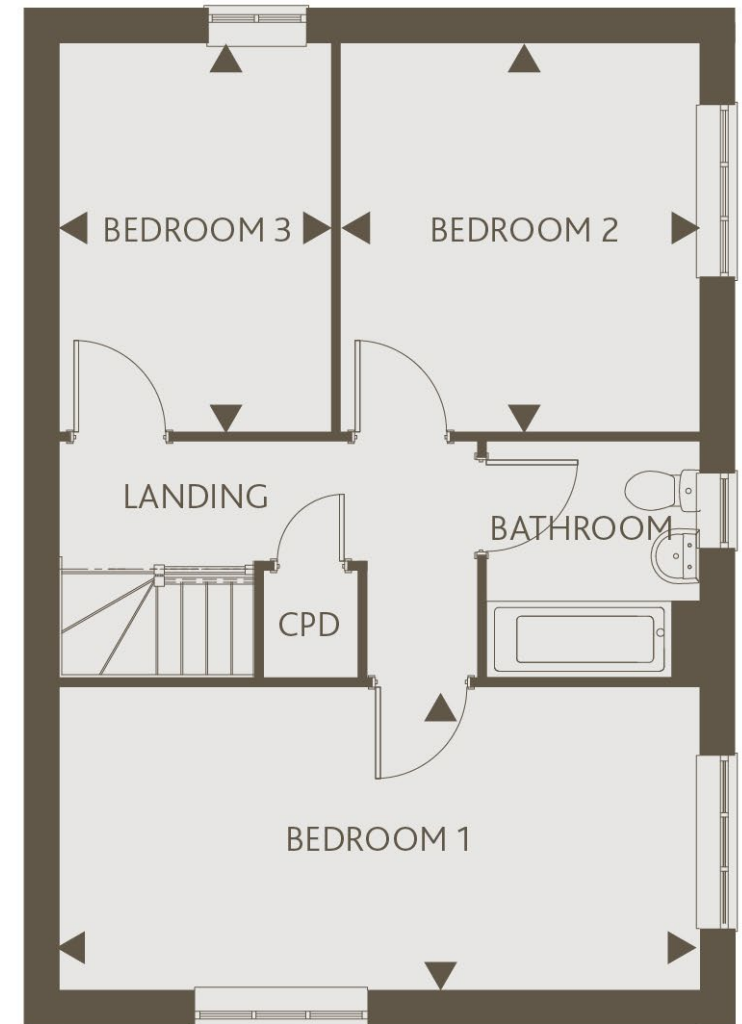
BEDROOM 1  
9'2" x 19'4"    2.81m x 5.91m

BEDROOM 2  
11'9" x 10'10"    3.59m x 3.32m

BEDROOM 3  
11'9" x 8'3"    3.59m x 2.52m



GROUND FLOOR



FIRST FLOOR

# 3 Bedroom Detached House Plot 35

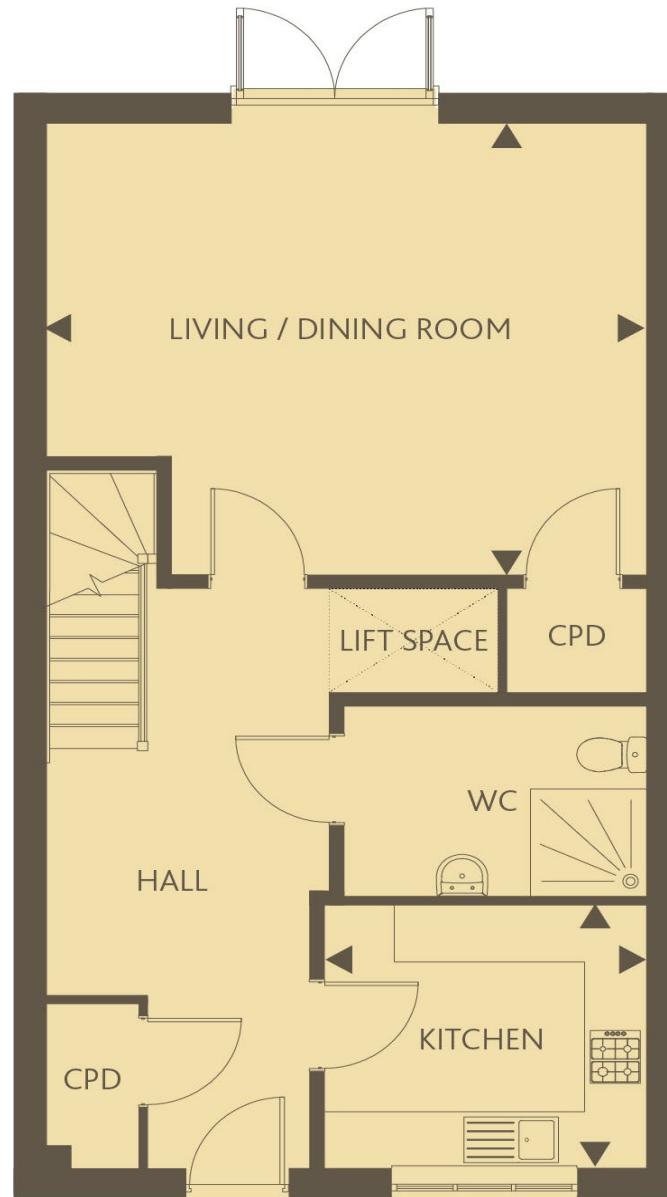
KITCHEN  
9'3" x 10'5"      2.83m x 3.19m

LIVING / DINING ROOM  
15'10" x 19'4"      4.83m x 5.91m

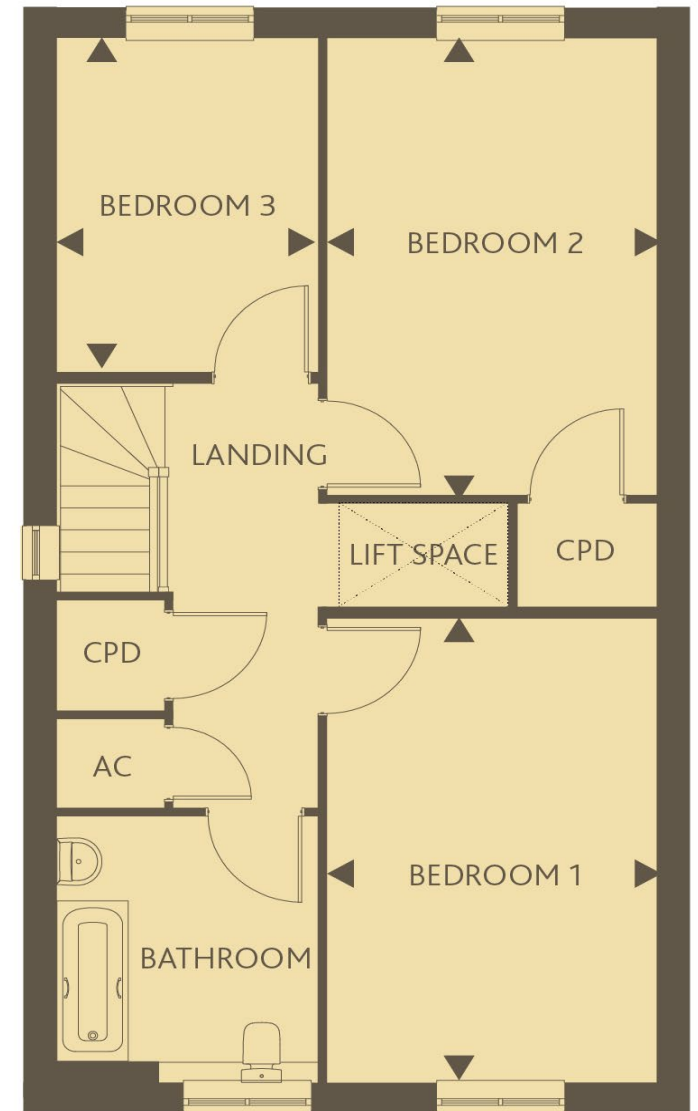
BEDROOM 1  
16'3" x 10'7"      4.97m x 3.25m

BEDROOM 2  
16'0" x 10'7"      4.88m x 3.25m

BEDROOM 3  
11'9" x 8'5"      3.60m x 2.59m



GROUND FLOOR



FIRST FLOOR



# SITE PLAN



These particulars do not constitute any part of an offer or contract. Any intended purchasers must satisfy themselves as to the correctness of each of the statements contained in these particulars. All floor layouts may be subject to changes. The dimensions given on the plan are subject to minor variations intended for guidance only and are not to be used for carpets, appliances or items of furniture.

**////// ParadigmLiving**

**For more information**

**0300 303 8046**

**[www.paradigmliving.co.uk](http://www.paradigmliving.co.uk)**

These particulars do not constitute any part of an offer or contract. Any intended purchasers must satisfy themselves as to the correctness of each of the statements contained in these particulars. All floor layouts maybe subject to changes. The dimensions given on the plan are subject to minor variations intended for guidance only and are not be used for carpets, appliances or items of furniture.

