



# NORTH STONEHAM PARK



FOUR BEDROOMS

## The Knowsley

A stylish, comfortable and spacious four-bedroom family home

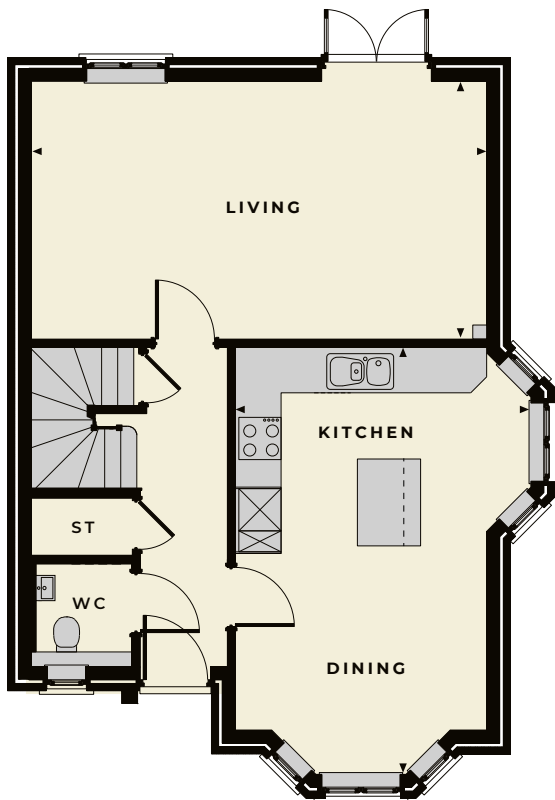
FOUR BEDROOMS

# The Knowsley

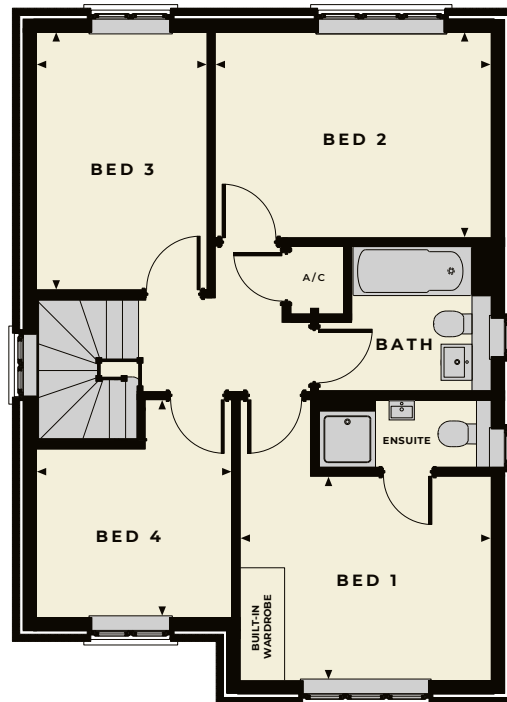


The Knowsley is a spacious and comfortable four-bedroom family home, built in a modern style and set over two floors. The ground floor offers a superb open-plan kitchen and dining room with two feature bay windows and a substantial living room space with French doors that lead out onto the garden. The first floor has four bedrooms and a family bathroom, with the master bedroom featuring an en-suite shower room.

**GROUND FLOOR**



**FIRST FLOOR**



*Knowsley internal room dimensions* – Total sq footage: 115sqm (1237sq)

**GROUND FLOOR**

- Living**  
6.82m x 3.7m (22' 4" x 12' 1")

---

- Kitchen/Dining Room**  
6.10m x 4.00m (20' 0" x 11' 8")

**FIRST FLOOR**

- Bedroom 1**  
3.62m x 2.95m (11' 9" x 9' 7")

---

- Bedroom 2**  
3.95m x 2.95m (13' 0" x 9' 7")

---

- Bedroom 3**  
3.68m x 2.48m (12' 1" x 8' 1")

---

- Bedroom 4**  
3.10m x 2.80m (10' 2" x 9' 2")



**HIGHWOOD HOMES**, THE HAY BARN, UPPER ASHFIELD FARM, HOE LANE, ROMSEY, HAMPSHIRE SO51 9NJ  
 TELEPHONE 023 80 011620  
 EMAIL SALES@NORTHSTONEHAMPARK.CO.UK  
 WEBSITE WWW.NORTHSTONEHAMPARK.CO.UK



**Disclaimer:** Floor plans and dimensions are taken from architectural drawings and are for guidance only. Dimensions stated are within a tolerance of plus or minus 50mm. Overall dimensions are usually stated and there may be projections into these. With our continual improvement policy we constantly review our designs and specifications to ensure we deliver the best product to our customers. Computer Generated Images not to scale. Finishes and materials may vary and landscaping is illustrative only. Kitchen layouts are indicative only and may change. Please speak to our Sales Advisor to confirm any specific details on our homes. March 18. Ty3.1+/03.18