



Persona Homes

by Home Group

## BOWLAND FOLD

LANCASHIRE

### Sedgwick A

*A three-bedroom detached home that has all you need for modern family living.*

If the downstairs kitchen and dining area with breakfast bar and utility doesn't blow you away – check out the separate lounge with dual aspect windows. The wow factor continues upstairs. There are three double bedrooms and the main bedroom comes with an en-suite and dressing area. This home is finished to an exceptionally high standard and also comes with a detached garage.



**Contact us:**

**T:** 0800 030 8888

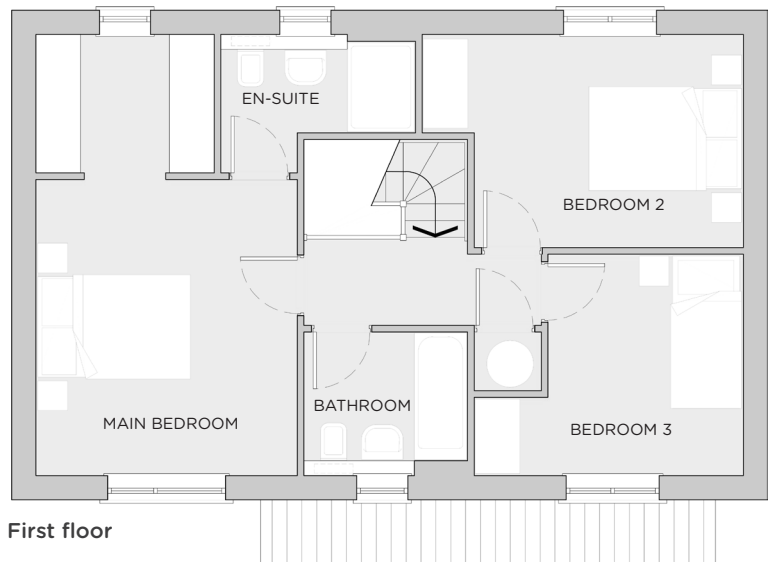
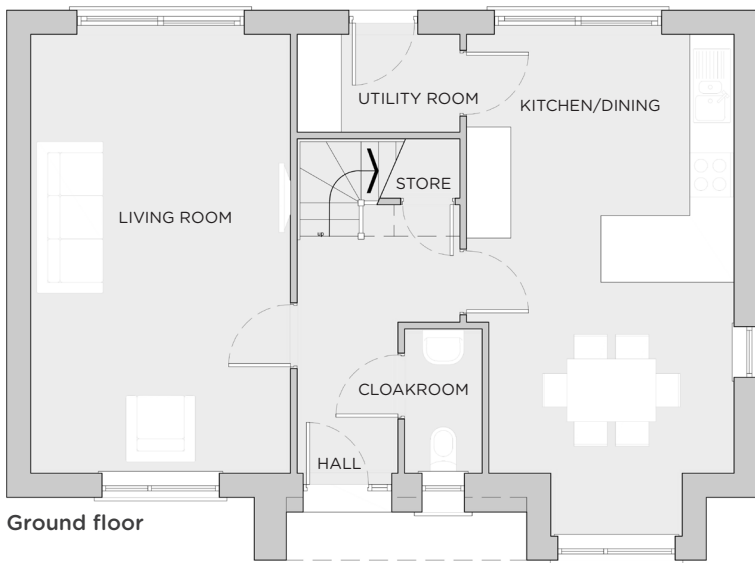
**E:** [contactus@yourpersonahome.com](mailto:contactus@yourpersonahome.com)

**W:** [yourpersonahome.com](http://yourpersonahome.com)

Lonsdale Rd, Halton, Lancaster LA2 6QA

# 3-bedroom house

Kitchen/dining	5.94m x 3.49m
Living room	5.94m x 3.52m
Cloakroom	1.85m x 1.02m
Utility	2.25m x 1.42m
Main bedroom	3.97 x 3.50m
En-suite	2.67m x 1.43m
Bedroom 2	4.31m x 2.86m
Bedroom 3	3.56m x 2.97m
Bathroom	2.22m x 1.92m
<b>Total Area</b>	<b>112.9m<sup>2</sup></b>



Any floor plans are a general outline of the layout of the property for guidance only. All measurements are approximate and may vary and any intending purchasers should not rely on them as statements of fact or representations of fact but must satisfy themselves by inspection or otherwise as to their accuracy. Dimensions shown are not intended to be relied upon for installation of appliances or items of furniture or otherwise. Cgi's and images are for illustrative purposes only.