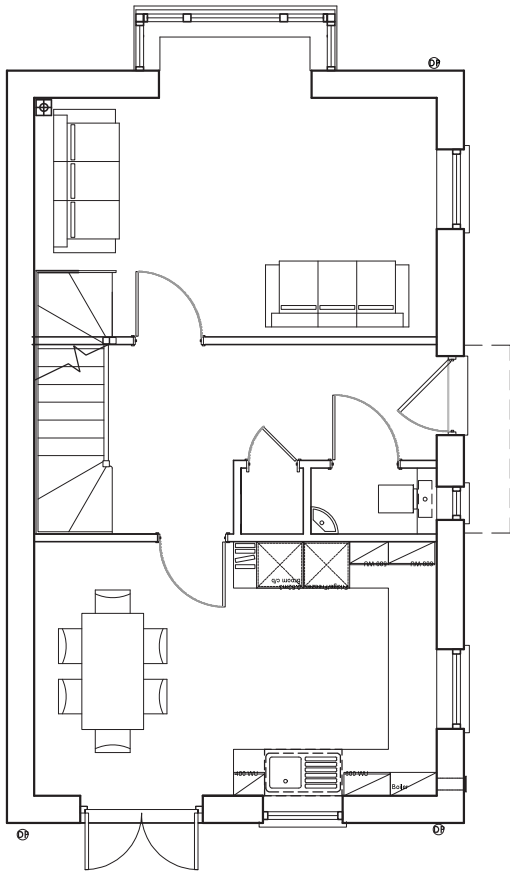


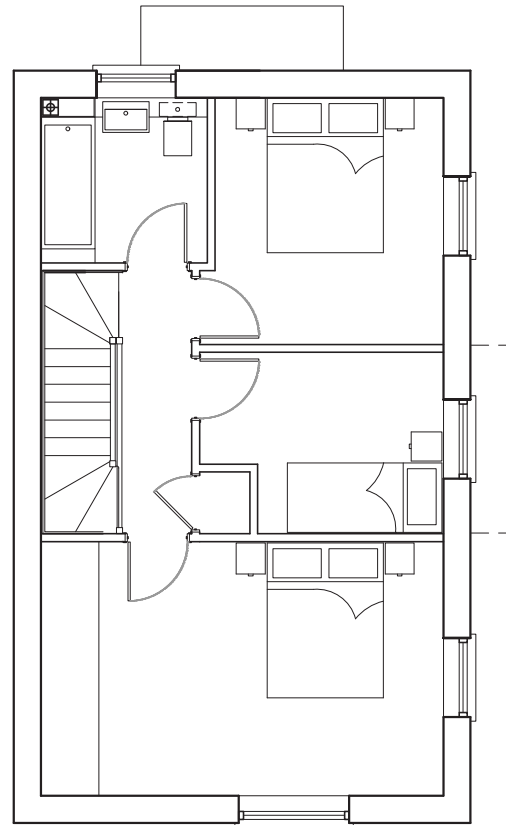
The Atrium

3 Bedroom home

End Terraced Plot 16 - M4(2): Accessible and adaptable dwelling



Ground floor



First floor

Ground floor

Kitchen

3.28 x 5.10 m

Lounge

3.09 x 5.10 m

WC

1.84 x 1.48 m

First floor

Bedroom 1

3.28 x 5.10 m

Bedroom 2

2.95 x 2.23 m

Bedroom 3

2.34 x 2.95 m

Bathroom

2.13 x 2.15 m

Total floor area 94.5m²

(Approximate dimensions)

*Window may be omitted on certain plots. Speak to sales officer for details.
All images used are for illustration purposes.

Disclaimer: These and the dimensions given for this house type and individual properties may differ. Please check with your sales officer in respect of individual properties. We give maximum dimensions within each room which includes areas of fixtures and fittings. These dimension should not be used for carpet or flooring sizes, appliances spaces or items of furniture. All images, photographs are not intended to be relied upon to form part of, any contract unless specifically incorporated in writing into the contract.