

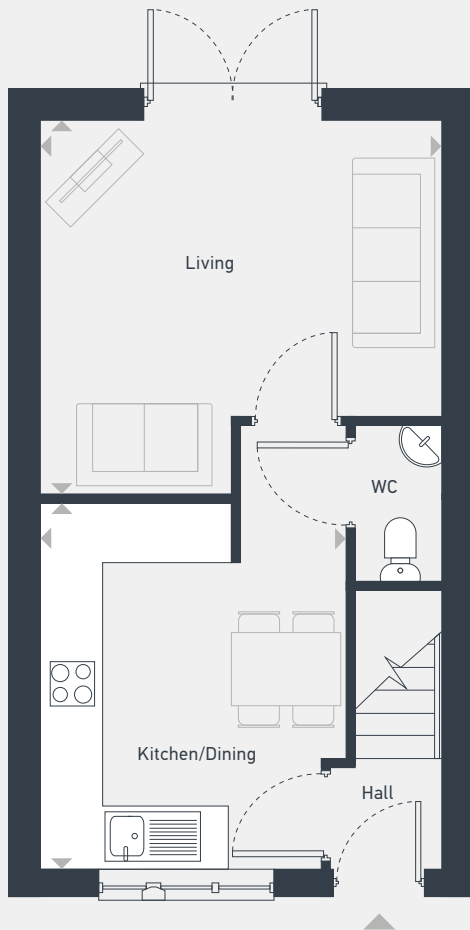


Marble Square

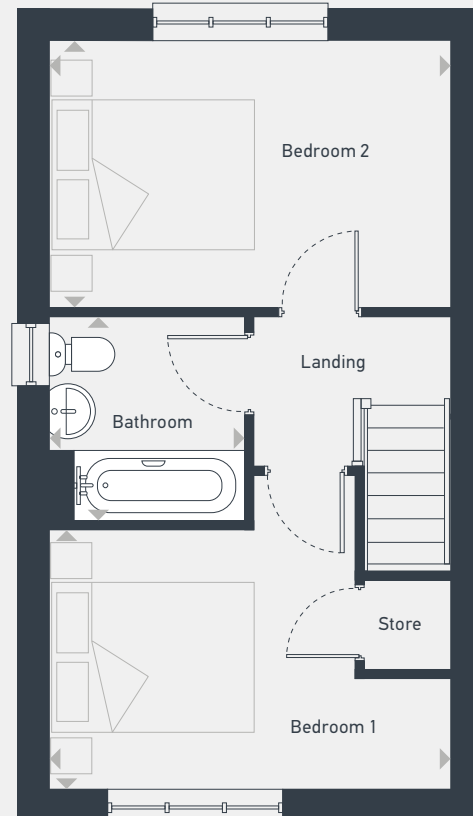
The Buttercup 2 bedroom house

Plots 66 & 77 — end-terrace
 Plots 67, 70, 71 & 76 — mid-terrace
 Plots 67, 71 & 77 — handed

60.48 sq m / 651 sq ft



GROUND FLOOR



FIRST FLOOR

DIMENSIONS	m	ft
Living	3.99m x 3.72m	13'1" x 12'2"
Kitchen/Dining	3.63m x 3.03m	11'11" x 9'11"

DIMENSIONS	m	ft
Bedroom 1	3.99m x 2.67m	13'1" x 8'9"
Bedroom 2	3.99m x 2.56m	13'1" x 8'5"
Bathroom	2.02m x 1.94m	6'7" x 6'4"



07973 813 331 | southyorkshire@slsnewhomes.co.uk | placesforpeople.co.uk/marblesquare

Marble Square, Nightingale Road, Osmaston, Derby DE24 8BF

Please note: All CGIs, layouts and floor plans, configurations, maps and information are intended for guidance only and accuracy of this information cannot be relied upon by prospective purchasers who must make their own enquiries to satisfy themselves by inspection or otherwise as to the correct detail. Sizes and dimensions approximate and subject to change.

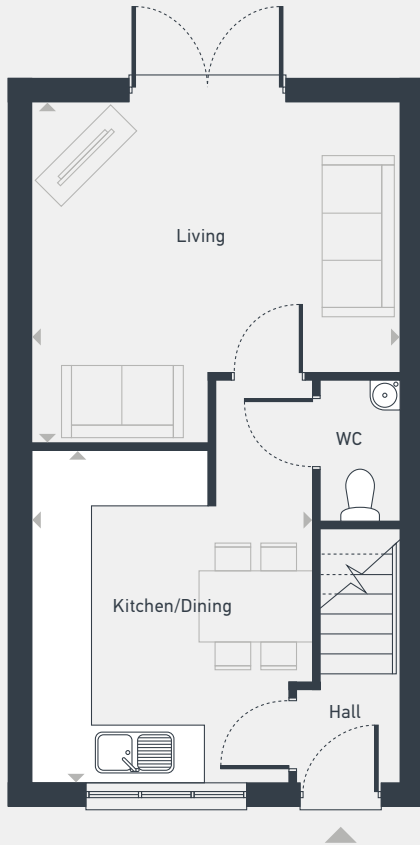


Marble Square

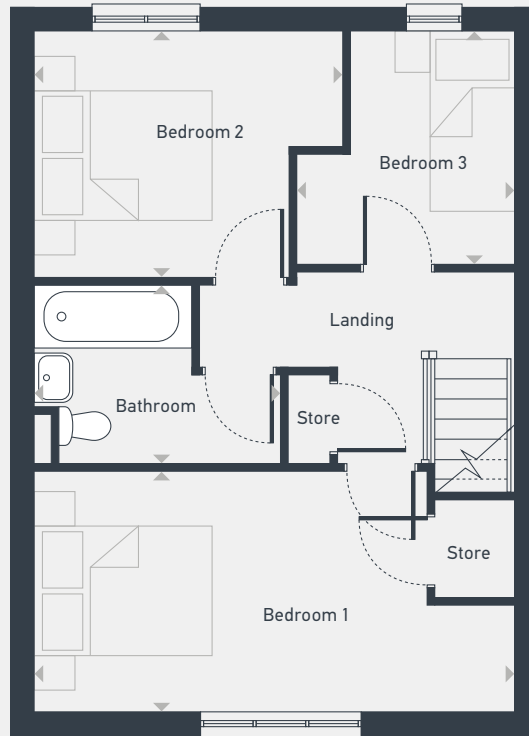
The Laurel 3 bedroom house

Plots 72 & 75 — end-terrace
Plots 68 & 69 — mid-terrace
Plots 69 & 75 — handed

69.86 sq m / 752 sq ft



GROUND FLOOR



FIRST FLOOR

DIMENSIONS	m	ft
Living	3.99m x 3.72m	13'1" x 12'2"
Kitchen/Dining	3.63m x 3.03m	11'11" x 9'11"

DIMENSIONS	m	ft
Bedroom 1	5.25m x 2.64m	17'3" x 8'8"
Bedroom 2	3.37m x 2.64m	11'1" x 8'8"
Bedroom 3	2.49m x 2.39m	8'2" x 7'10"
Bathroom	2.68m x 1.97m	8'9" x 6'6"



07973 813 331 | southyorkshire@lslnewhomes.co.uk | placesforpeople.co.uk/marblesquare

Marble Square, Nightingale Road, Osmaston, Derby DE24 8BF

Please note: All CGIs, layouts and floor plans, configurations, maps and information are intended for guidance only and accuracy of this information cannot be relied upon by prospective purchasers who must make their own enquiries to satisfy themselves by inspection or otherwise as to the correct detail. Sizes and dimensions approximate and subject to change.

Marble Square

The Alder 4 bedroom house

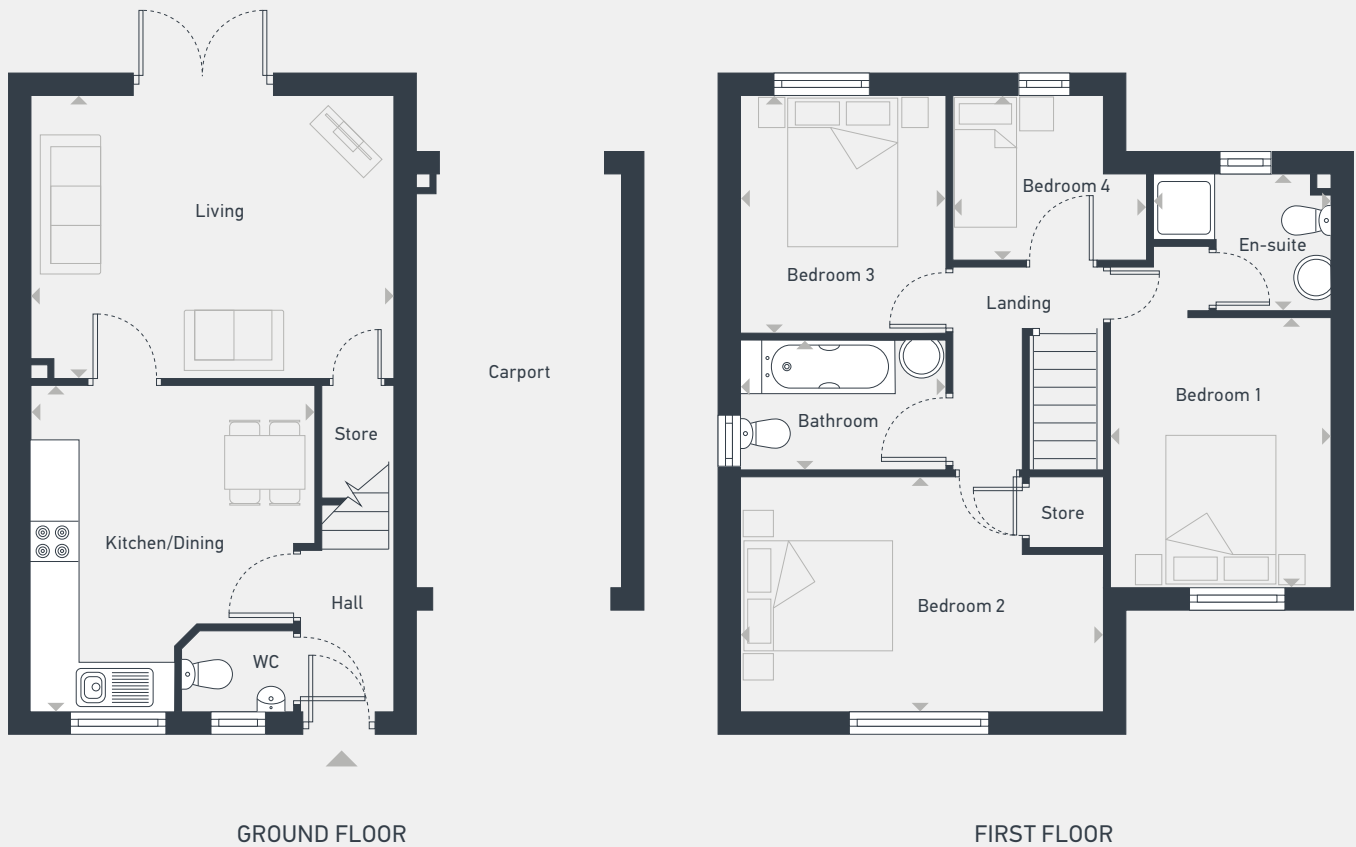


Marble Square

The Alder 4 bedroom house

Plots 61, 62, 64 & 65 — semi-detached
Plots 62 & 64 — handed

86.40 sq m / 930 sq ft



DIMENSIONS	m	ft
Living	4.51m x 3.58m	14'9" x 11'8"
Kitchen/Dining	4.10m x 3.55m	13'5" x 11'7"

DIMENSIONS	m	ft
Bedroom 1	3.38m x 2.82m	11'1" x 9'3"
En-suite	2.24m x 1.71m	7'4" x 5'7"
Bedroom 2	4.51m x 2.94m	14'9" x 9'7"
Bedroom 3	2.99m x 2.57m	9'10" x 8'5"
Bedroom 4	2.45m x 2.05m	8'0" x 6'8"
Bathroom	2.57m x 1.66m	8'5" x 5'5"



07973 813 331 | southyorkshire@lslnewhomes.co.uk | placesforpeople.co.uk/marblesquare

Marble Square, Nightingale Road, Osmaston, Derby DE24 8BF

Please note: All CGIs, layouts and floor plans, configurations, maps and information are intended for guidance only and accuracy of this information cannot be relied upon by prospective purchasers who must make their own enquiries to satisfy themselves by inspection or otherwise as to the correct detail. Sizes and dimensions approximate and subject to change.