



Persona Homes

by Home Group

KINGSWOOD COLLECTION

HULL

Rosas

4-bedroom house

*Looking for a family home that offers plenty of space for you to grow into?
Look no further, the Rosas is the home for you.*

Spread across three floors, the Rosas is a beautifully designed property with spacious living areas downstairs. With four generous bedrooms, a family bathroom and finished to a high specification we can see why this home has proven to be popular!



Contact us:

T: 0800 030 8888

E: contactus@yourpersonahome.com

W: yourpersonahome.com

Kingsfield Park, Hull, HU7 3LH

Ground floor

Kitchen/dining 4.72m x 2.86m

Living room 5m x 3.31m

First floor

Bedroom 2 3.78m x 2.9m

Bedroom 3 4.25m x 2.9m

Bedroom 4 3.3m x 2.16m

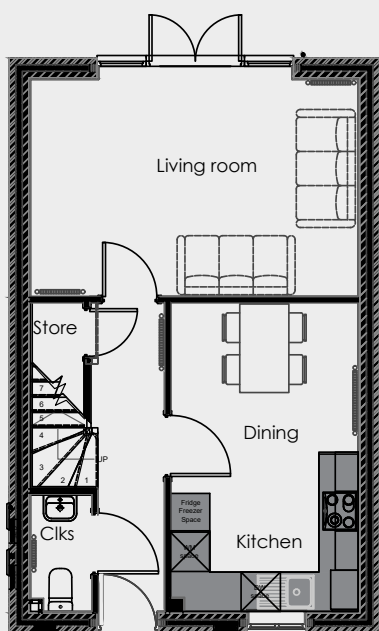
Bathroom 2.39m x 1.83m

Second floor

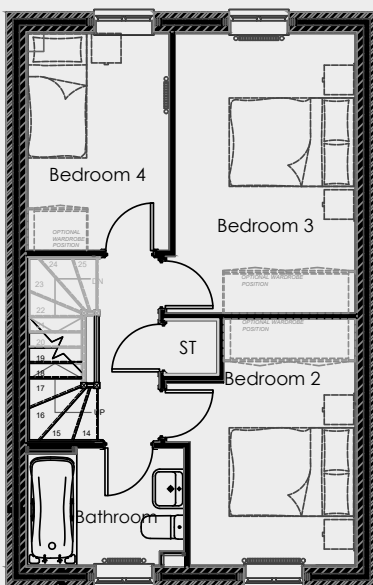
Main bedroom 5.97m x 3.95m

Main bedroom en-suite 2.16m x 1.89m

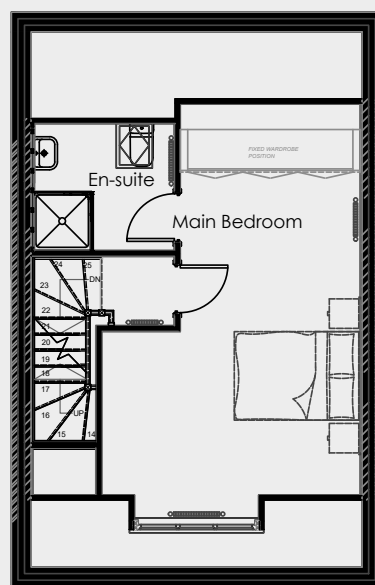
Total floor area 110m²



Ground floor



First floor



Second floor



Any floor plans are a general outline of the layout of the property for guidance only. All measurements are approximate and may vary and any intending purchasers should not rely on them as statements of fact or representations of fact but must satisfy themselves by inspection or otherwise as to their accuracy. Dimensions shown are not intended to be relied upon for installation of appliances or items of furniture or otherwise. CGI's and images are for illustrative purposes only. Specifications are subject to change. Images are indicative only and may be of previous developments.*Journey times and distances taken from google.com/ maps and are correct before going to print. All times and distances listed are approximate and may vary depending on time of travel.



Persona Homes

by Home Group

KINGSWOOD COLLECTION

HULL

Seville

4-bedroom house

One of our larger four-bedroom homes, the Seville comes with a little bit extra.

The Seville is a classic townhouse and is spread across three floors. Designed with large windows throughout, this home is bright and airy. The farmhouse-style kitchen is sure to be the home's heart, whilst everyone upstairs will have space to relax and unwind.



Contact us:

T: 0800 030 8888

E: contactus@yourpersonahome.com

W: yourpersonahome.com

Kingsfield Park, Hull, HU7 3LH

Ground floor

Kitchen/dining 5.29m x 5m

First floor

Living room 5m x 4.24m

Main bedroom 5.29m x 3.49m

En-suite 2.27m x 1.49m

Second floor

Bedroom 2 3.4m x 3.58m

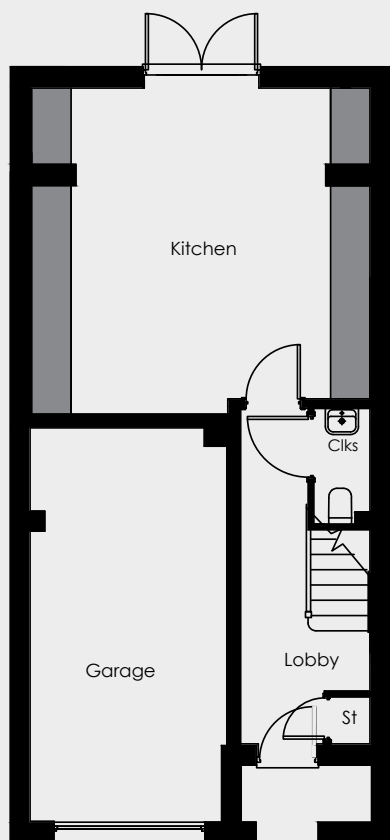
Main bedroom en-suite 2.38m x 2.34m

Bedroom 3 3.48m x 3.09m

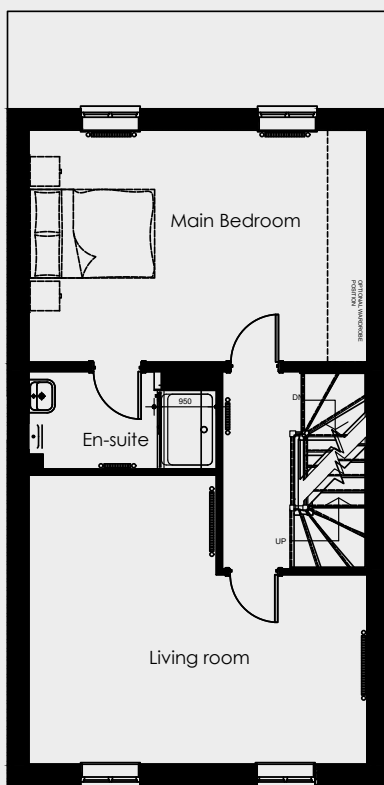
Home office 3.48m x 2.1m

Bathroom 2.37m x 1.7m

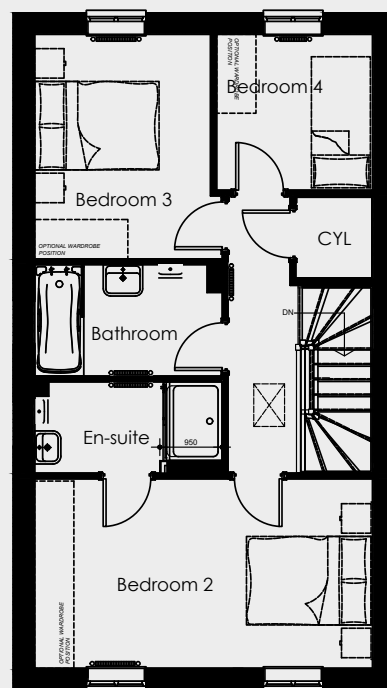
Total floor area 134m²



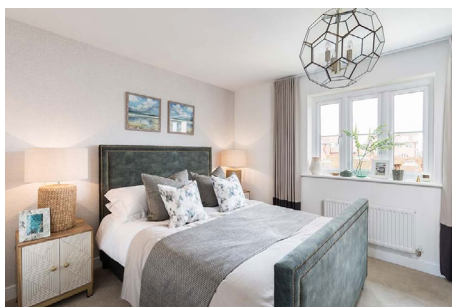
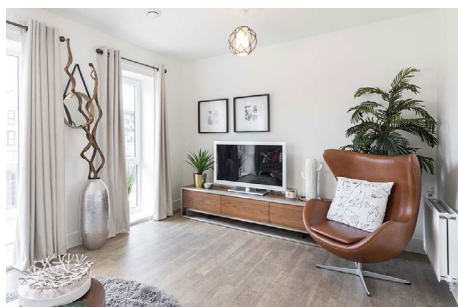
Ground floor



First floor



Second floor



Any floor plans are a general outline of the layout of the property for guidance only. All measurements are approximate and may vary and any intending purchasers should not rely on them as statements of fact or representations of fact but must satisfy themselves by inspection or otherwise as to their accuracy. Dimensions shown are not intended to be relied upon for installation of appliances or items of furniture or otherwise. CGI's and images are for illustrative purposes only. Specifications are subject to change. Images are indicative only and may be of previous developments.*Journey times and distances taken from google.com/ maps and are correct before going to print. All times and distances listed are approximate and may vary depending on time of travel.



Persona Homes

by Home Group

KINGSWOOD COLLECTION

HULL

Barcelona

4-bedroom house

*With lots to offer, the Barcelona is a lovely home
designed for today's modern living.*

The Barcelona is a modern semi-detached home designed with growing families in mind, spread across three floors. The ground floor is all about connecting with your family while the upper floors offer ample personal space for everyone to unwind and relax after a busy day.



Contact us:

T: 0800 030 8888

E: contactus@yourpersonahome.com

W: yourpersonahome.com

Kingsfield Park, Hull, HU7 3LH

Ground floor

Kitchen/dining 4.27m x 3.55m

Living room 5.08m x 3.55m

First floor

Bedroom 3 3.55m x 3.39m

Bedroom 4 3.55m x 3.28m

Bathroom 3.13m x 1.46m

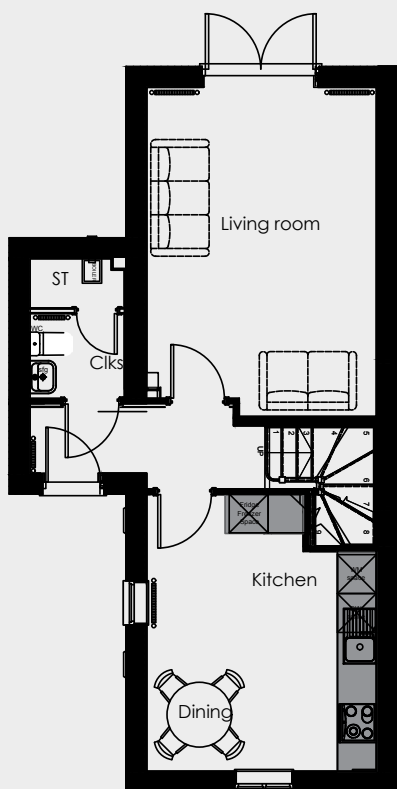
Second floor

Main bedroom 3.57m x 3.28m

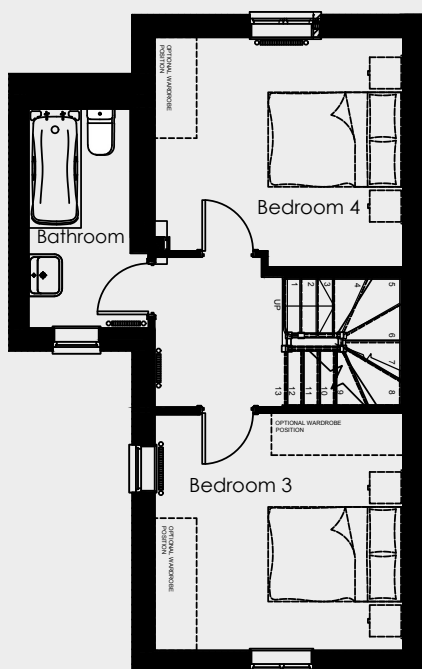
Main bedroom en-suite 2.99m x 0.85m

Bedroom 2 3.54m x 3.39m

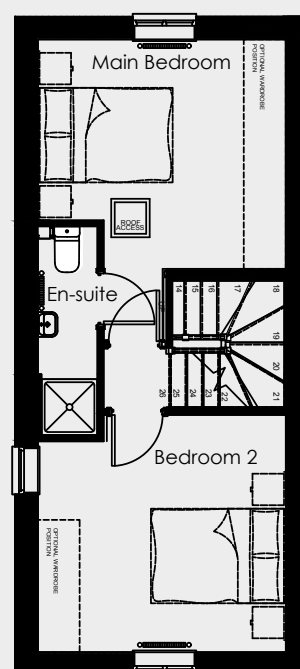
Total floor area 109.8m²



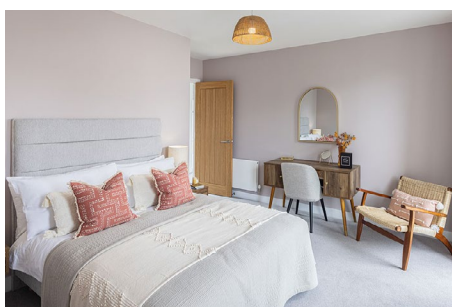
Ground floor



First floor



Second floor



Any floor plans are a general outline of the layout of the property for guidance only. All measurements are approximate and may vary and any intending purchasers should not rely on them as statements of fact or representations of fact but must satisfy themselves by inspection or otherwise as to their accuracy. Dimensions shown are not intended to be relied upon for installation of appliances or items of furniture or otherwise. CGI's and images are for illustrative purposes only. Specifications are subject to change. Images are indicative only and may be of previous developments.*Journey times and distances taken from google.com/ maps and are correct before going to print. All times and distances listed are approximate and may vary depending on time of travel.