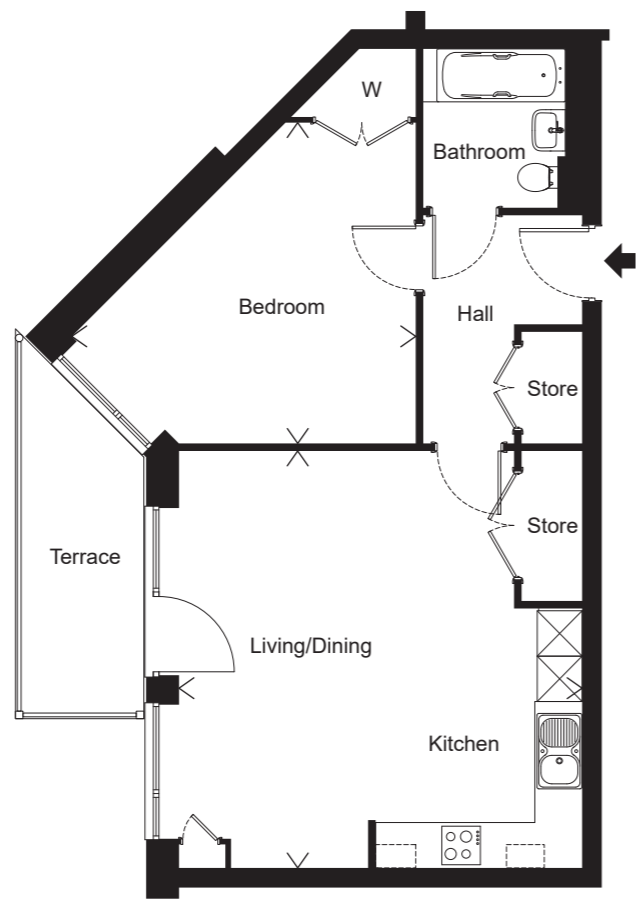


Plot 2.C.02
1 bedroom apartment
Second Floor
54m²/581ft²

Kitchen/Living/Dining
5.34m x 5.23m
17'6" x 17'2"

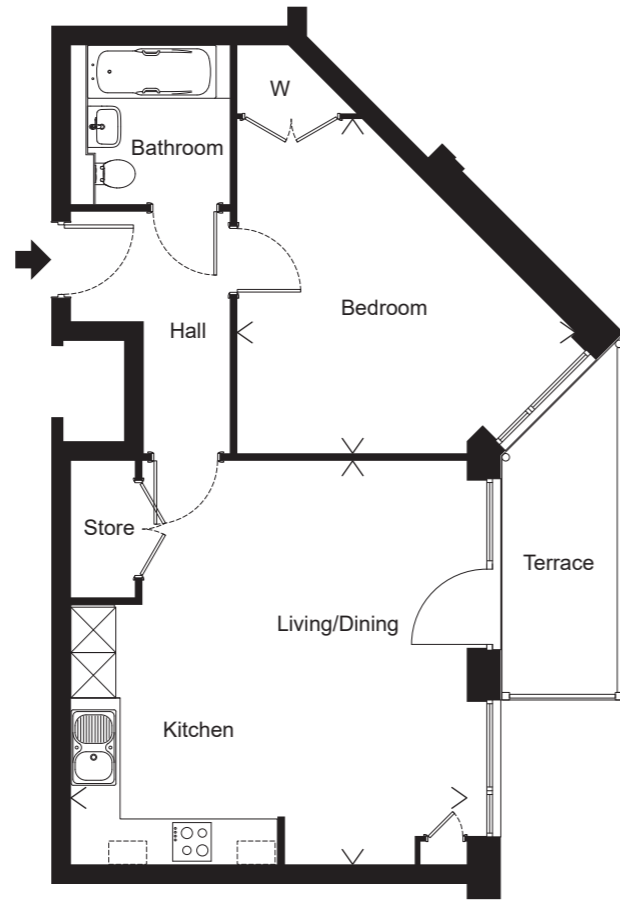
Bedroom
4.47m x 4.42m
14'8" x 14'6"



Plot 2.C.04
1 bedroom apartment
Second Floor
56m²/603ft²

Kitchen/Living/Dining
 5.51m x 5.33m
 18'1" x 17'6"

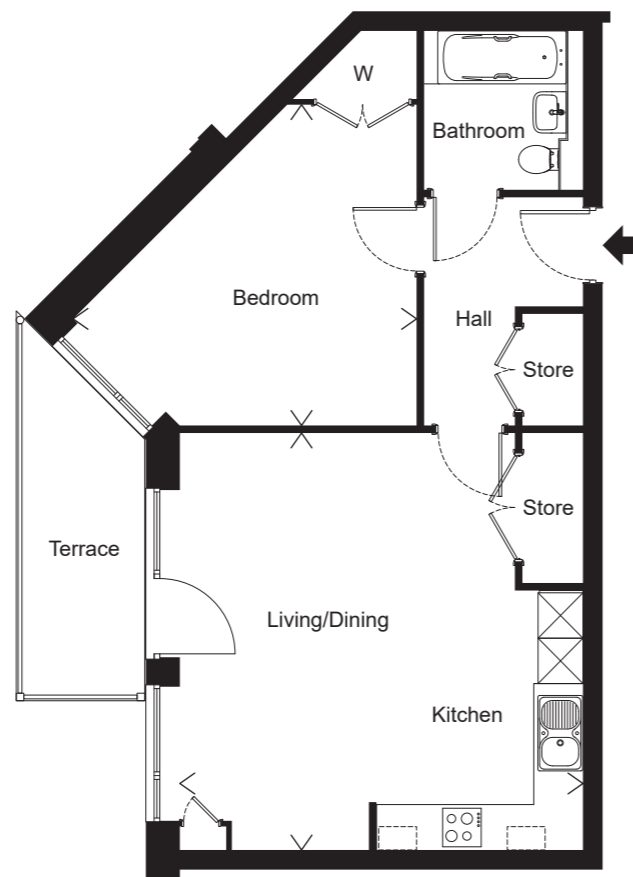
Bedroom
 4.55m x 4.24m
 14'11" x 13'11"



Plot 3.C.02
1 bedroom apartment
Third Floor
54m²/581ft²

Kitchen/Living/Dining
5.34m x 5.23m
17'6" x 17'2"

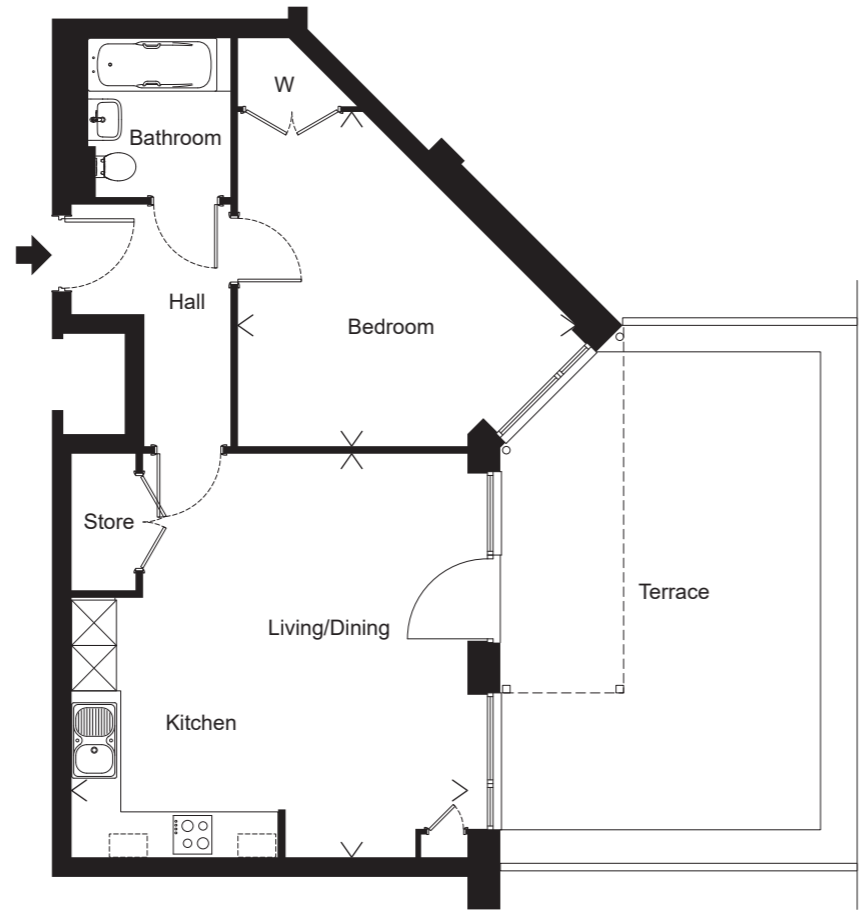
Bedroom
4.47m x 4.42m
14'8" x 14'6"



Plot 3.C.04
1 bedroom apartment
Third Floor
56m²/603ft²

Kitchen/Living/Dining
 5.51m x 5.33m
 18'1" x 17'6"

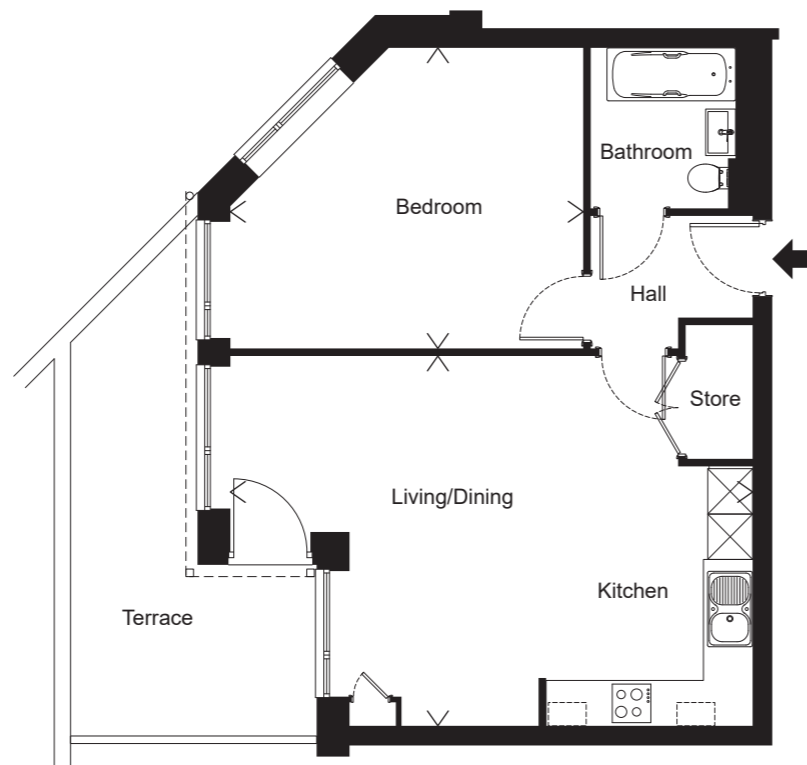
Bedroom
 4.54m x 4.24m
 14'11" x 13'11"



Plot G.C.02
1 bedroom apartment
Ground
54m²/581ft²

Kitchen/Living/Dining
 5.34m x 5.23m
 17'6" x 17'2"

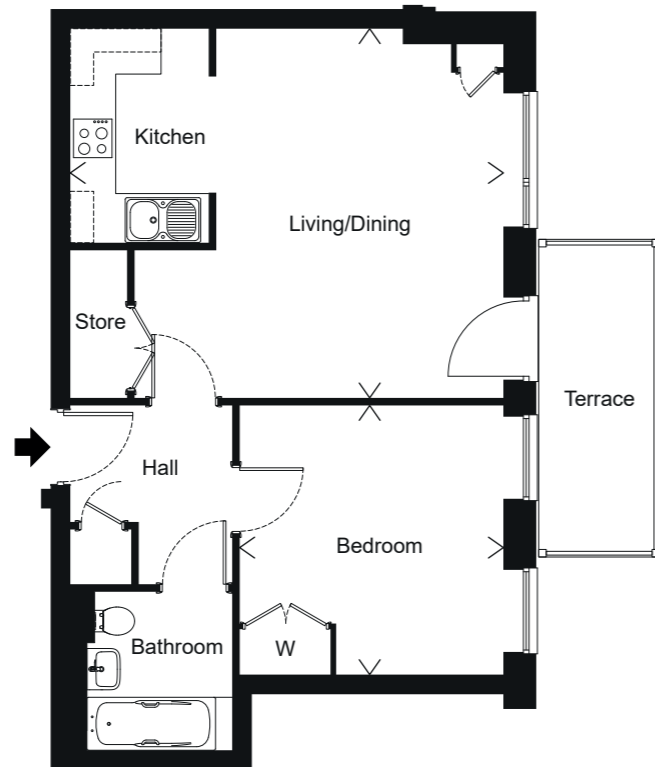
Bedroom
 4.47m x 4.42m
 14'8" x 14'6"



Plot G.C.04
1 bedroom apartment
Ground Floor
55m²/592ft²

Kitchen/Living/Dining
 6.90m x 4.89m
 22'8" x 16'0"

Bedroom
 4.66m x 3.97m
 15'3" x 13'0"



Plot 1.A.01
1 bedroom apartment
First Floor
50m²/538ft²

Kitchen/Living/Dining
5.73m x 4.88m
18'9" x 16'0"

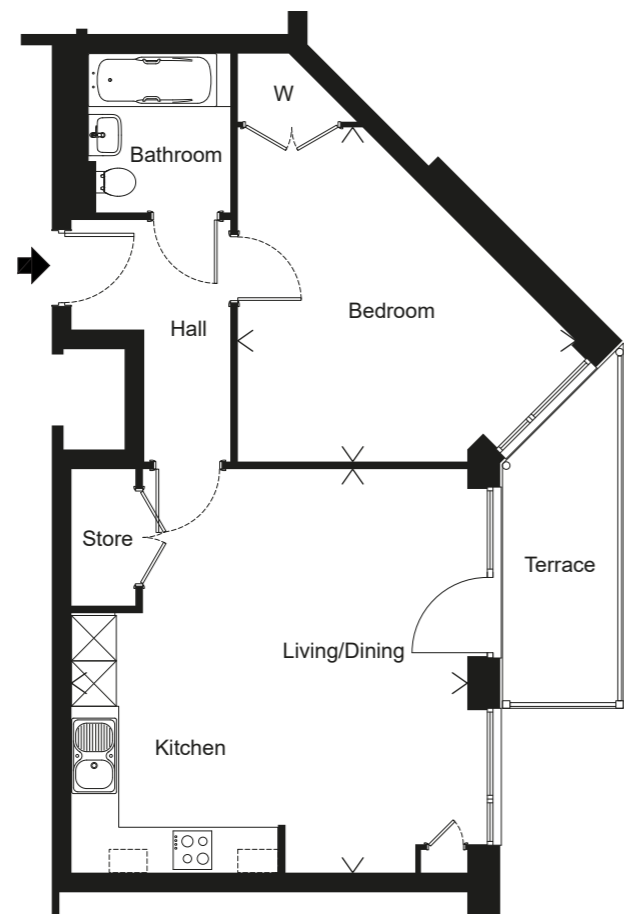
Bedroom
3.56m x 3.49m
11'8" x 11'5"



Plot 1.A.04
1 bedroom apartment
First Floor
51m²/549ft²

Kitchen/Living/Dining
6.94m x 4.76m
22'9" x 15'7"

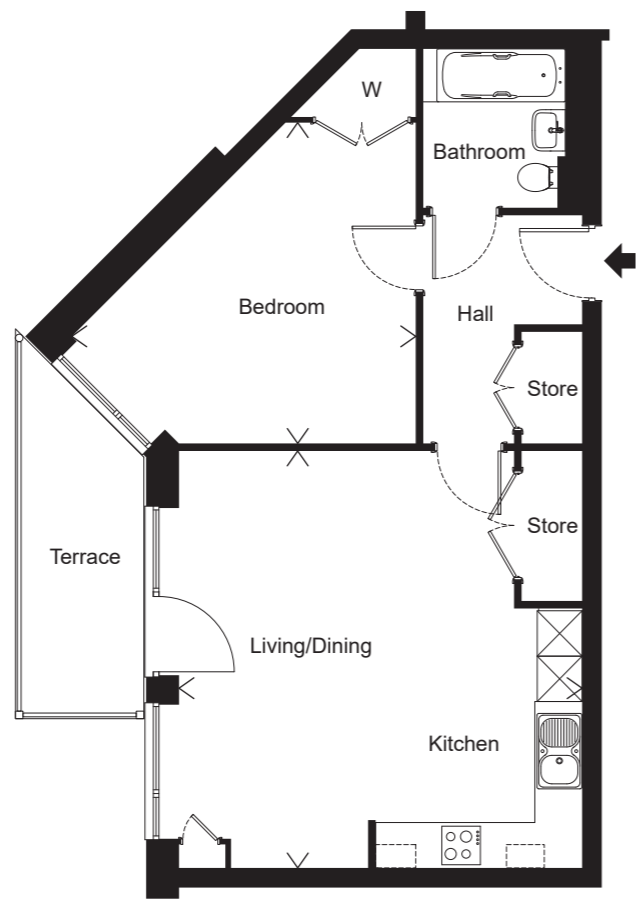
Bedroom
4.24m x 3.26m
13'11" x 10'8"



Plot 1.C.02
1 bedroom apartment
First Floor
54m²/581ft²

Kitchen/Living/Dining
5.34m x 5.23m
17'6" x 17'2"

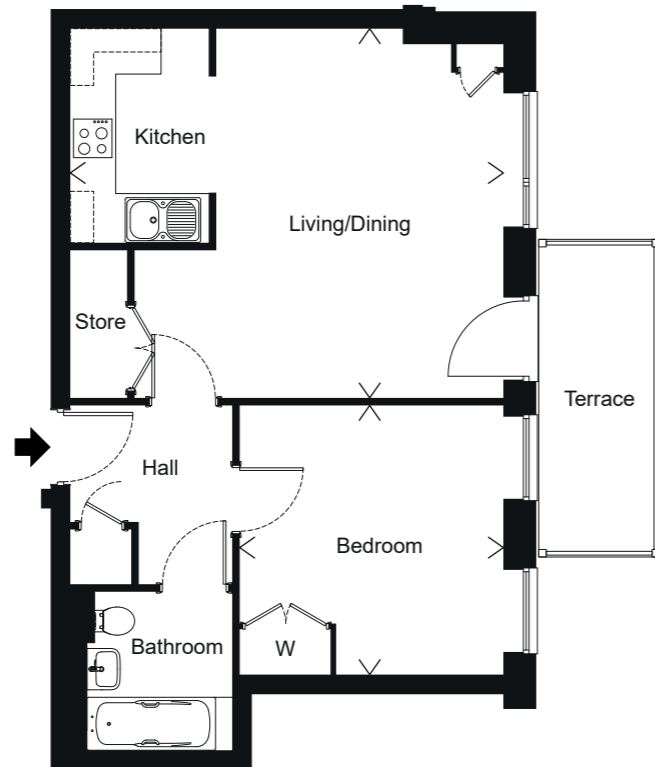
Bedroom
4.47m x 4.42m
14'8" x 14'6"



Plot 1.C.04
1 bedroom apartment
First Floor
56m²/603ft²

Kitchen/Living/Dining
 5.51m x 5.33m
 18'1" x 17'6"

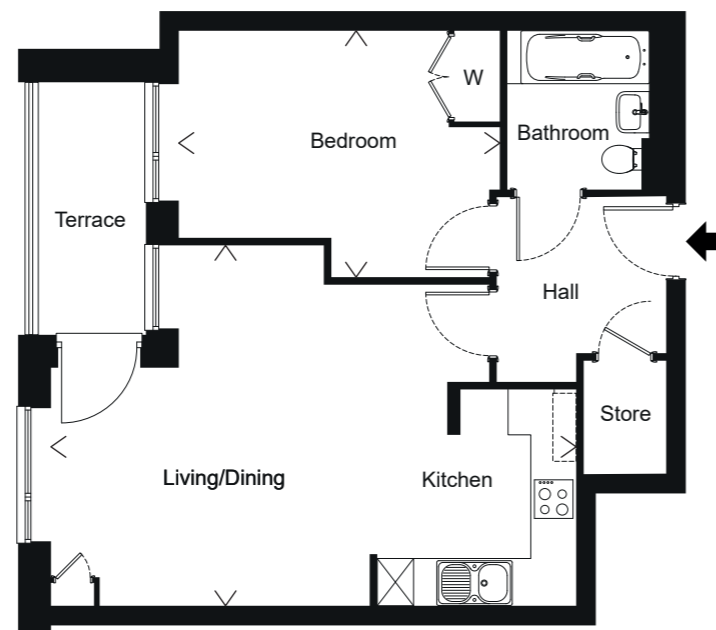
Bedroom
 4.55m x 4.24m
 14'11" x 13'11"



Plot 2.A.01
1 bedroom apartment
Second Floor
50m²/538ft²

Kitchen/Living/Dining
5.73m x 4.88m
18'9" x 16'0"

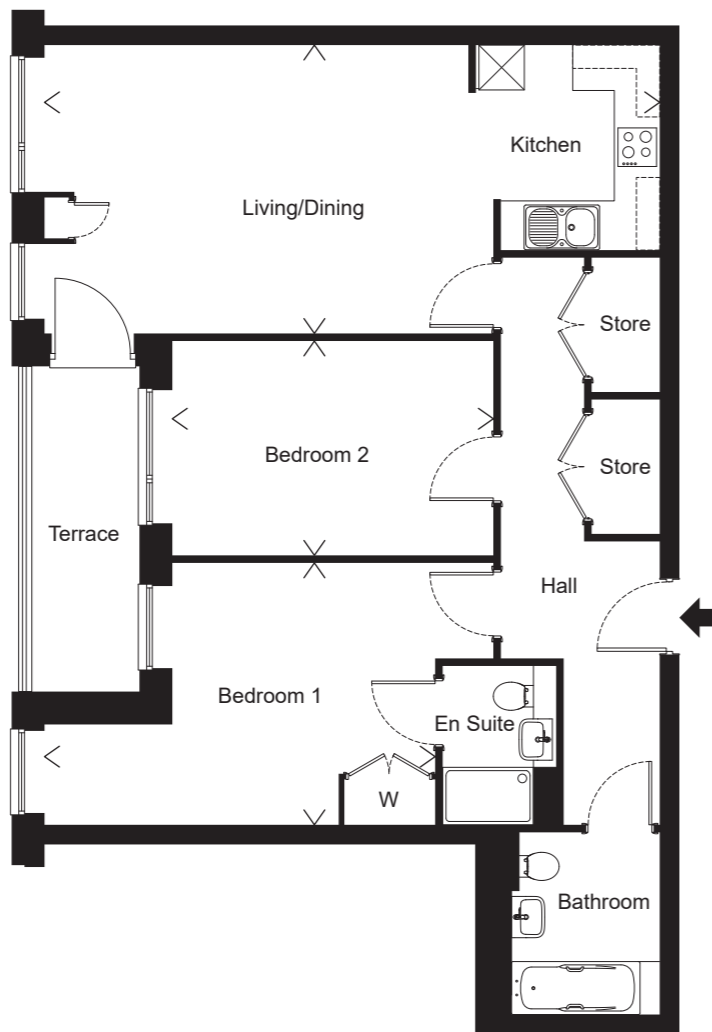
Bedroom
3.56m x 3.49m
11'8" x 11'5"



Plot 2.A.04
1 bedroom apartment
Second Floor
51m²/549ft²

Kitchen/Living/Dining
6.94m x 4.76m
22'9" x 15'7"

Bedroom
4.24m x 3.26m
13'11" x 10'8"

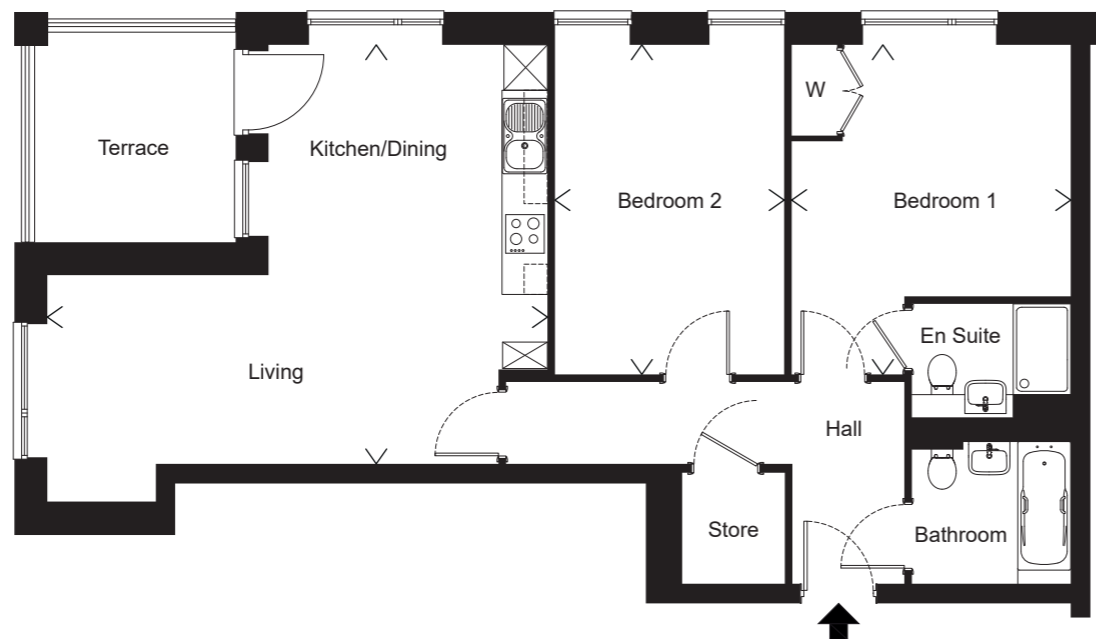


Plot 1.A.03
2 bedroom apartment
First Floor
80m²/861ft²

Kitchen/Living/Dining
 8.13m x 3.81m
 26'8" x 12'6"

Bedroom 1
 5.16m x 3.46m
 16'11" x 11'4"

Bedroom 2
 4.24m x 2.83m
 13'11" x 9'3"

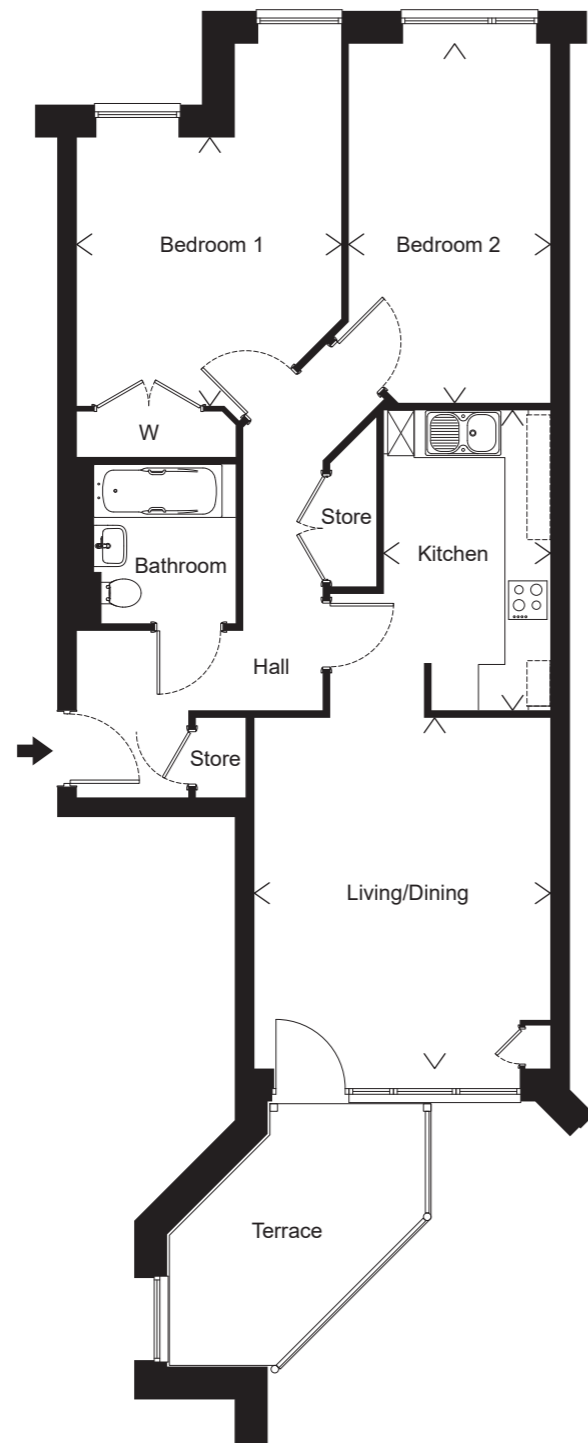


Plot 1.A.05
2 bedroom apartment
First Floor
74m²/797ft²

Kitchen/Living/Dining
 6.61m x 5.54m
 21'8" x 18'2"

Bedroom 1
 4.36m x 3.69m
 14'4" x 12'1"

Bedroom 2
 4.36m x 3.03m
 14'4" x 9'11"



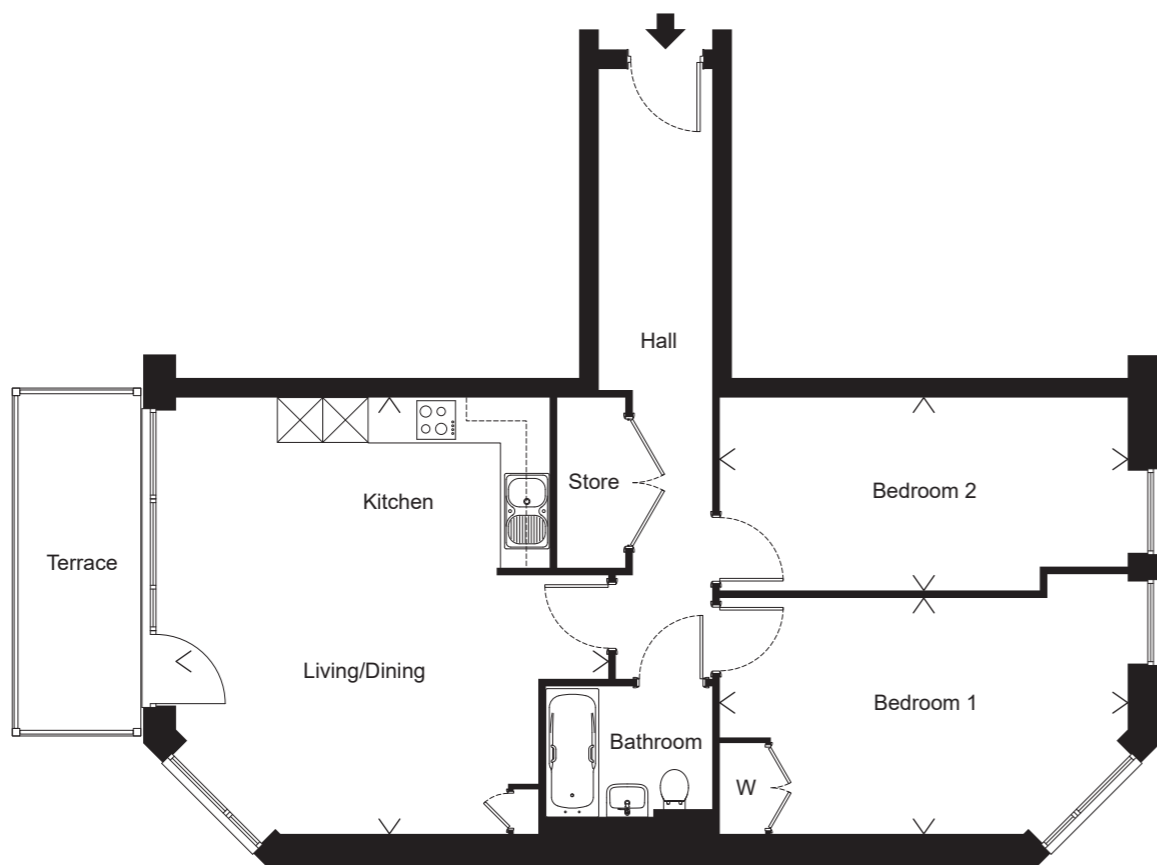
Plot 1.A.06
2 bedroom apartment
First Floor
73m²/786ft²

Living/Dining
 4.64m x 3.91m
 15'3" x 12'10"

Kitchen
 3.97m x 2.20m
 13'0" x 7'2"

Bedroom 1
 3.55m x 3.50m
 11'8" x 11'6"

Bedroom 2
 4.75m x 2.66m
 15'7" x 8'9"

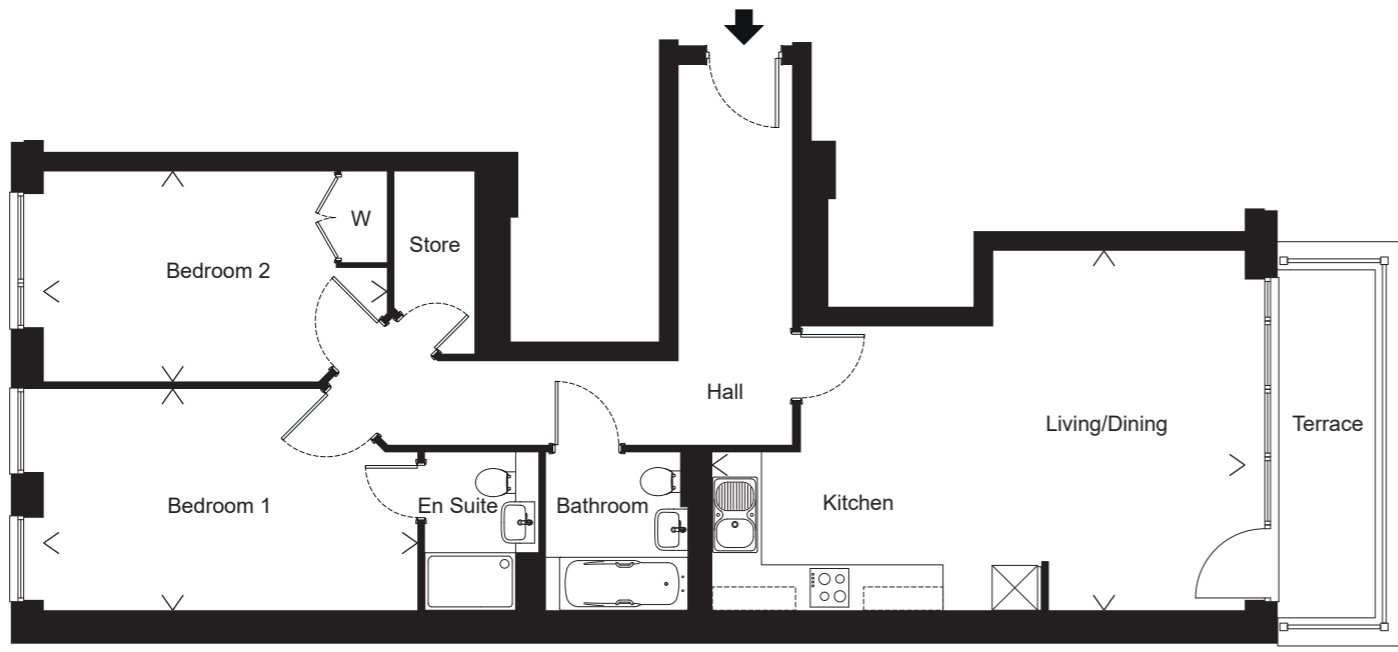


Plot 1.C.03
2 bedroom apartment
First Floor
77m²/829ft²

Kitchen/Living/Dining
 5.77m x 5.71m
 18'11" x 18'9"

Bedroom 1
 5.39m x 3.12m
 17'8" x 10'3"

Bedroom 2
 5.39m x 2.50m
 17'8" x 8'2"

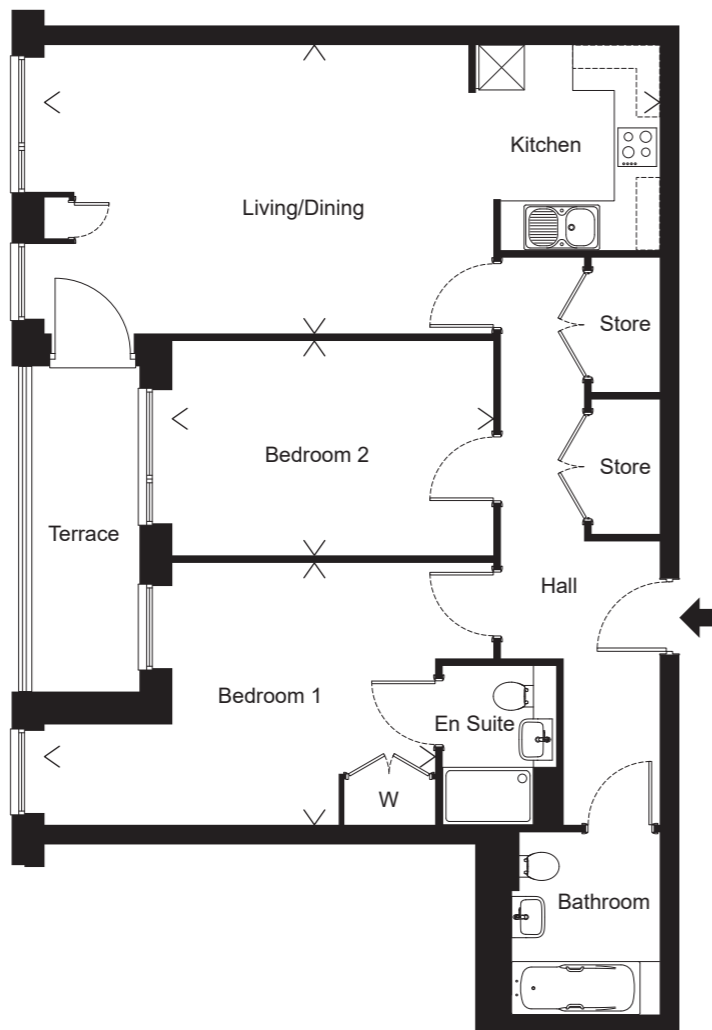


Plot 2.A.02
2 bedroom apartment
Second Floor
79m²/850ft²

Kitchen/Living/Dining
 7.04m x 4.75m
 23'1" x 15'7"

Bedroom 1
 4.94m x 2.93m
 16'3" x 9'7"

Bedroom 2
 4.54m x 2.78m
 14'11" x 9'1"

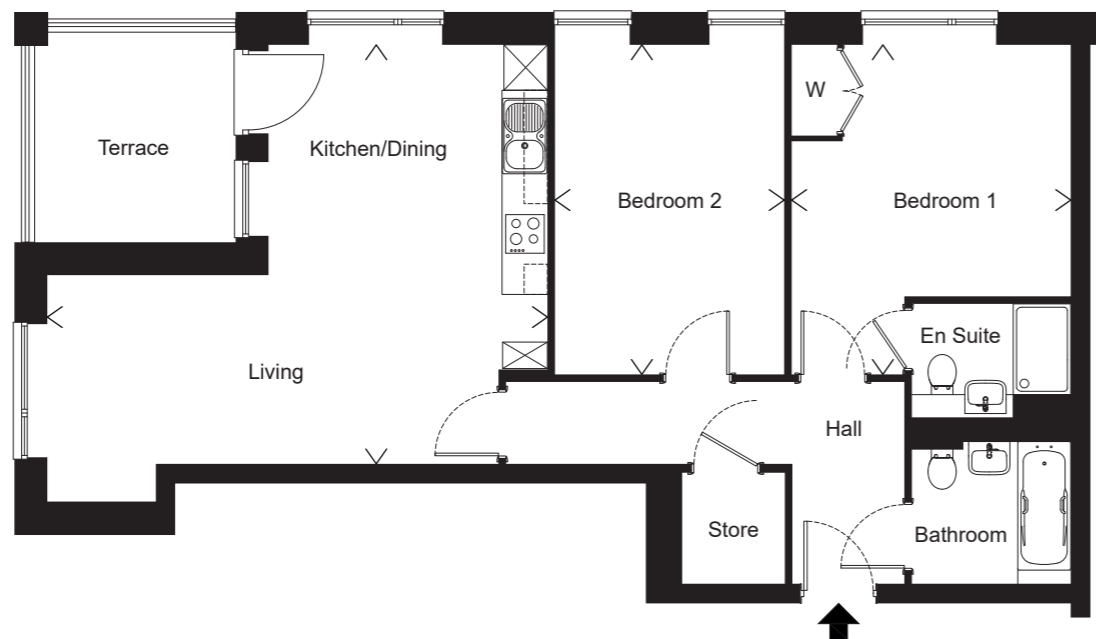


Plot 2.A.03
2 bedroom apartment
Second Floor
80m²/861ft²

Kitchen/Living/Dining
 8.13m x 3.81m
 26'8" x 12'6"

Bedroom 1
 5.16m x 3.46m
 16'11" x 11'4"

Bedroom 2
 4.24m x 2.83m
 13'11" x 9'3"

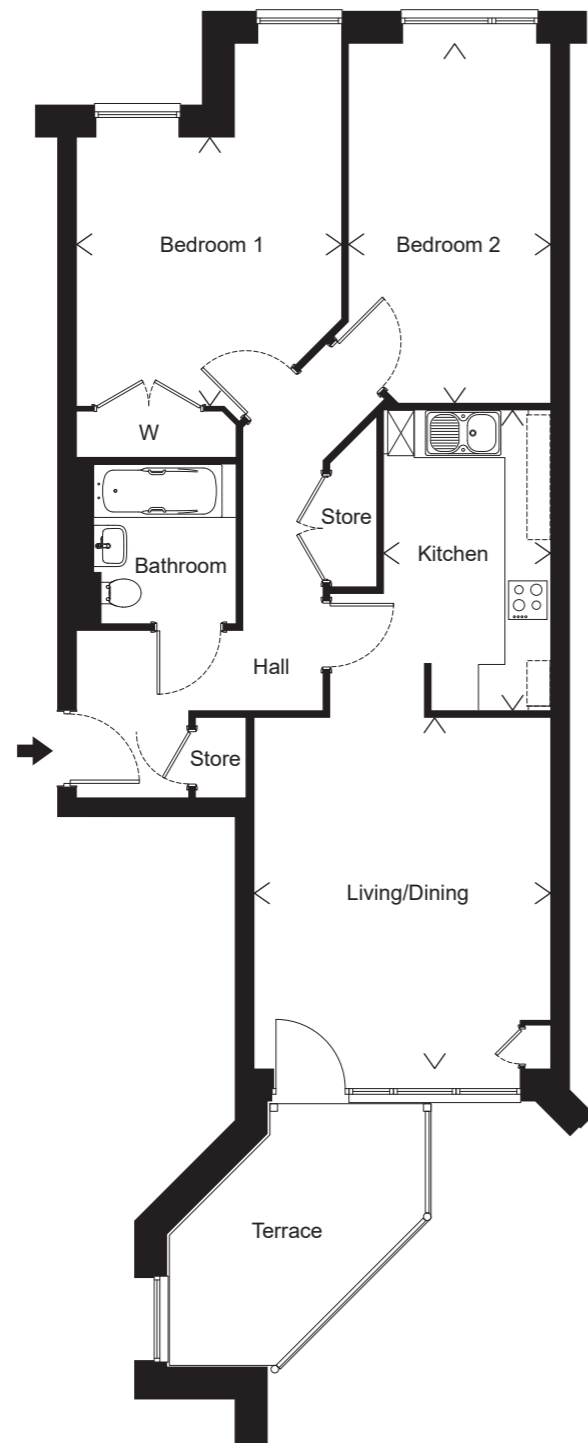


Plot 2.A.05
2 bedroom apartment
Second Floor
74m²/797ft²

Kitchen/Living/Dining
 6.61m x 5.54m
 21'8" x 18'2"

Bedroom 1
 4.36m x 3.69m
 14'4" x 12'1"

Bedroom 2
 4.36m x 3.03m
 14'4" x 9'11"



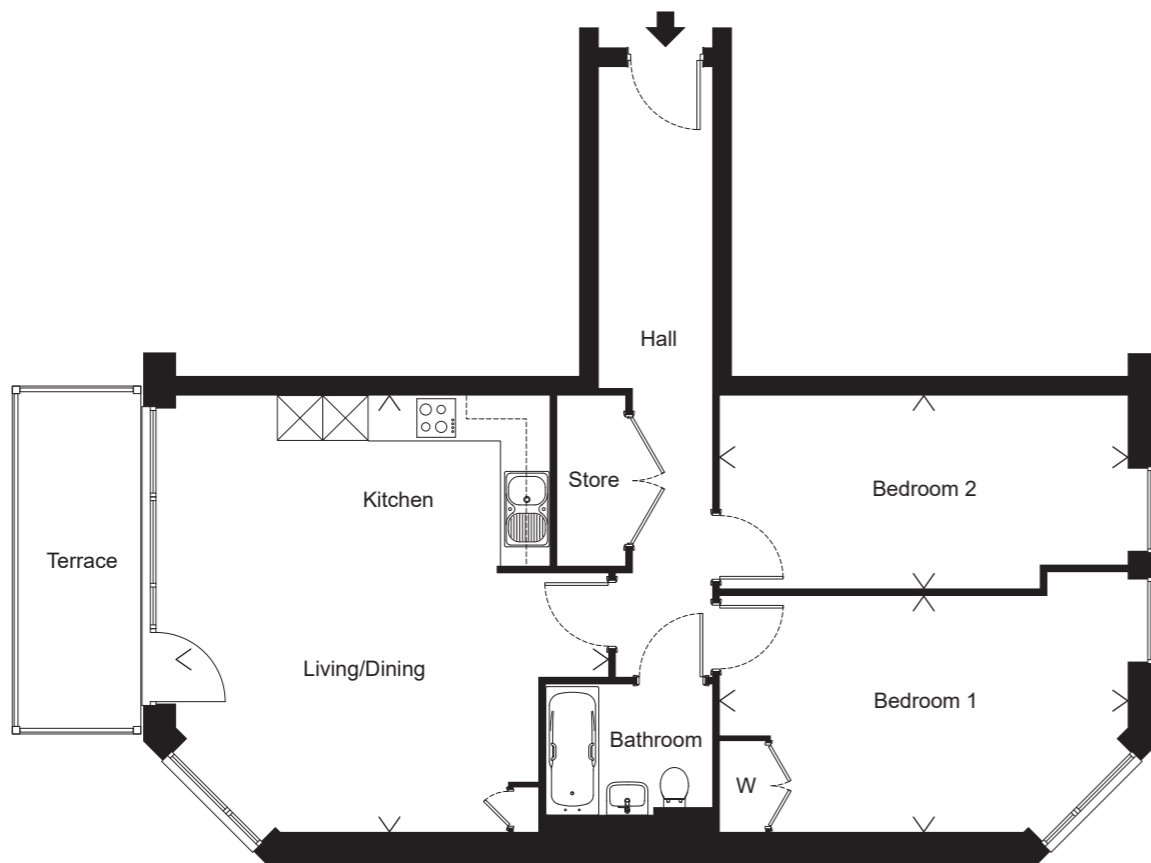
Plot 2.A.06
2 bedroom apartment
Second Floor
73m²/786ft²

Living/Dining
 4.64m x 3.91m
 15'3" x 12'10"

Kitchen
 3.97m x 2.20m
 13'0" x 7'2"

Bedroom 1
 3.55m x 3.50m
 11'8" x 11'6"

Bedroom 2
 4.75m x 2.66m
 15'7" x 8'9"

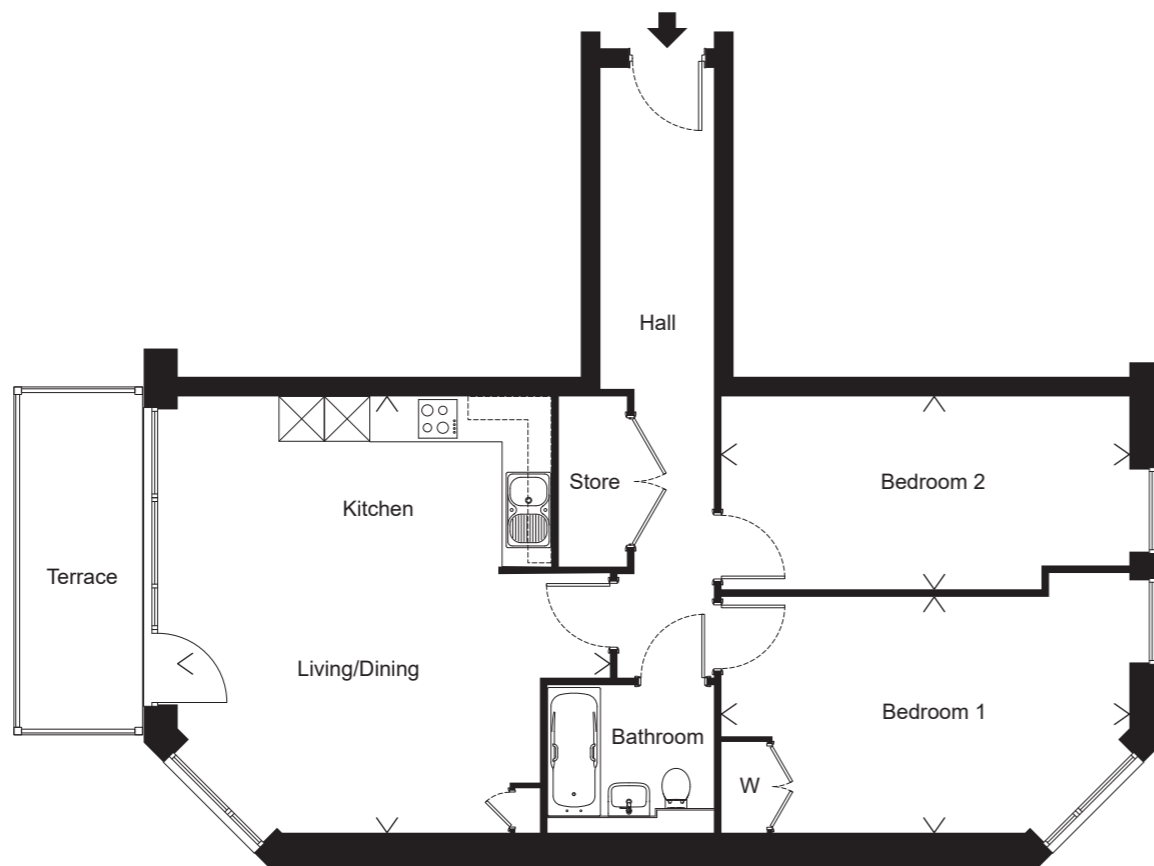


Plot 2.C.03
2 bedroom apartment
Second Floor
77m²/829ft²

Kitchen/Living/Dining
 5.77m x 5.71m
 18'11" x 18'9"

Bedroom 1
 5.39m x 3.12m
 17'8" x 10'3"

Bedroom 2
 5.39m x 2.50m
 17'8" x 8'2"

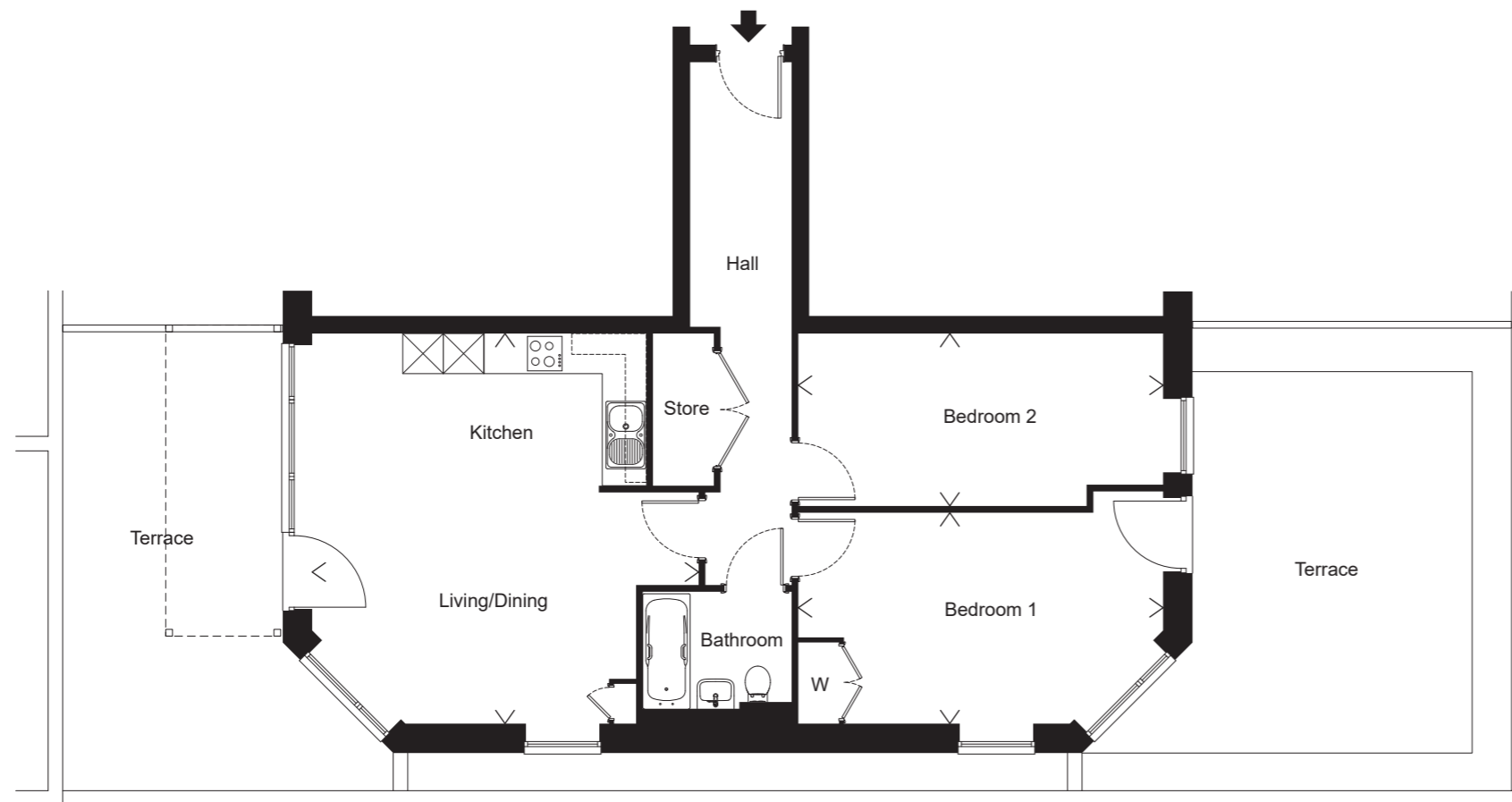


Plot 3.C.03
2 bedroom apartment
Third Floor
77m²/829ft²

Kitchen/Living/Dining
 5.77m x 5.71m
 18'11" x 18'9"

Bedroom 1
 5.39m x 3.12m
 17'8" x 10'3"

Bedroom 2
 5.39m x 3.12m
 17'8" x 10'3"

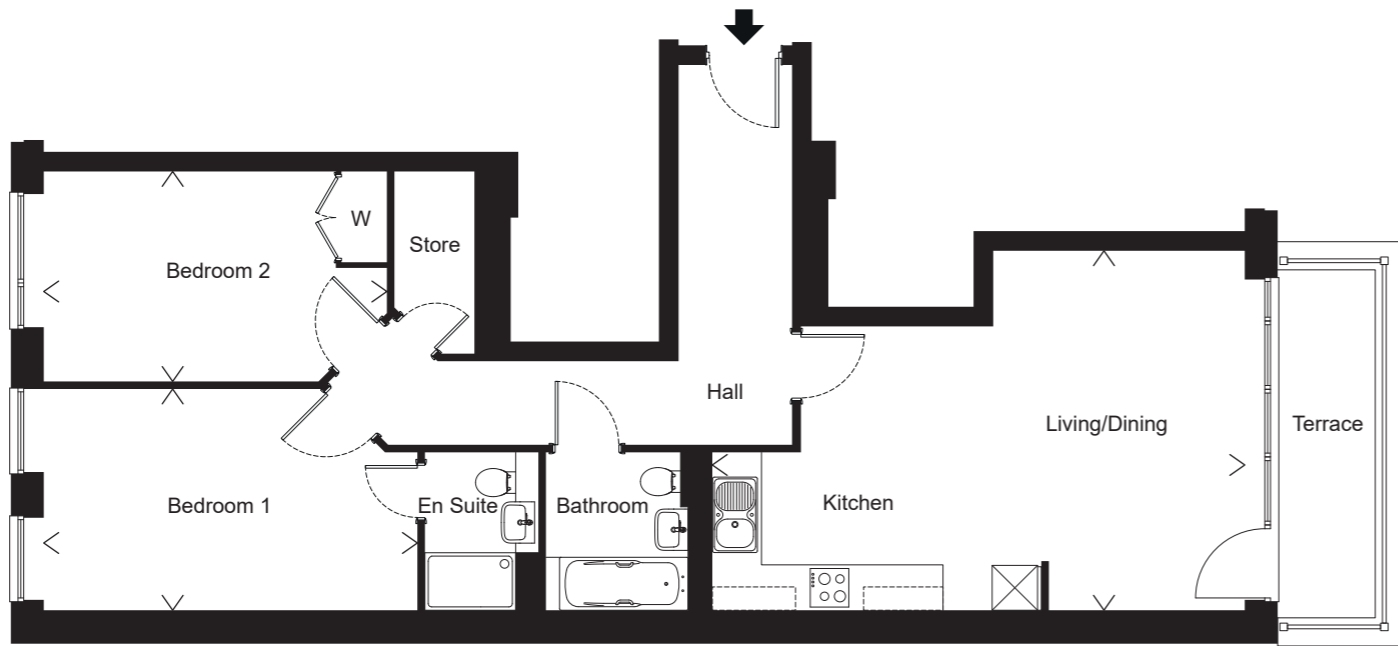


Plot G.C.03
2 bedroom apartment
Ground Floor
76m²/818ft²

Kitchen/Living/Dining
 5.77m x 5.71m
 18'11" x 18'9"

Bedroom 1
 5.39m x 3.12m
 17'8" x 10'3"

Bedroom 2
 5.39m x 2.55m
 17'8" x 8'4"

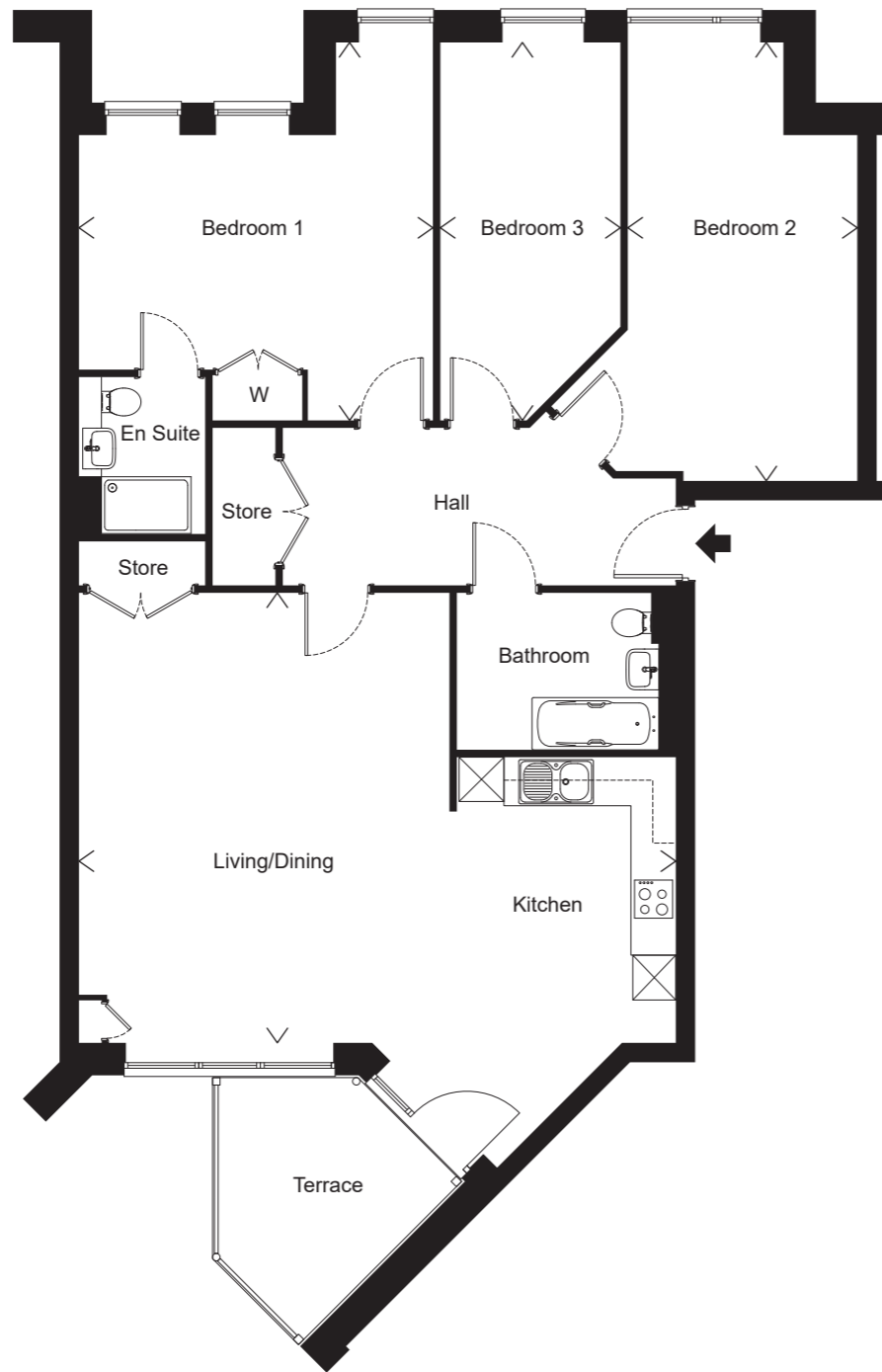


Plot 1.A.02
2 bedroom apartment
First Floor
79m²/850ft²

Kitchen/Living/Dining
 7.04m x 4.75m
 23'1" x 15'7"

Bedroom 1
 4.94m x 2.93m
 16'3" x 9'7"

Bedroom 2
 4.54m x 2.78m
 14'11" x 9'1"



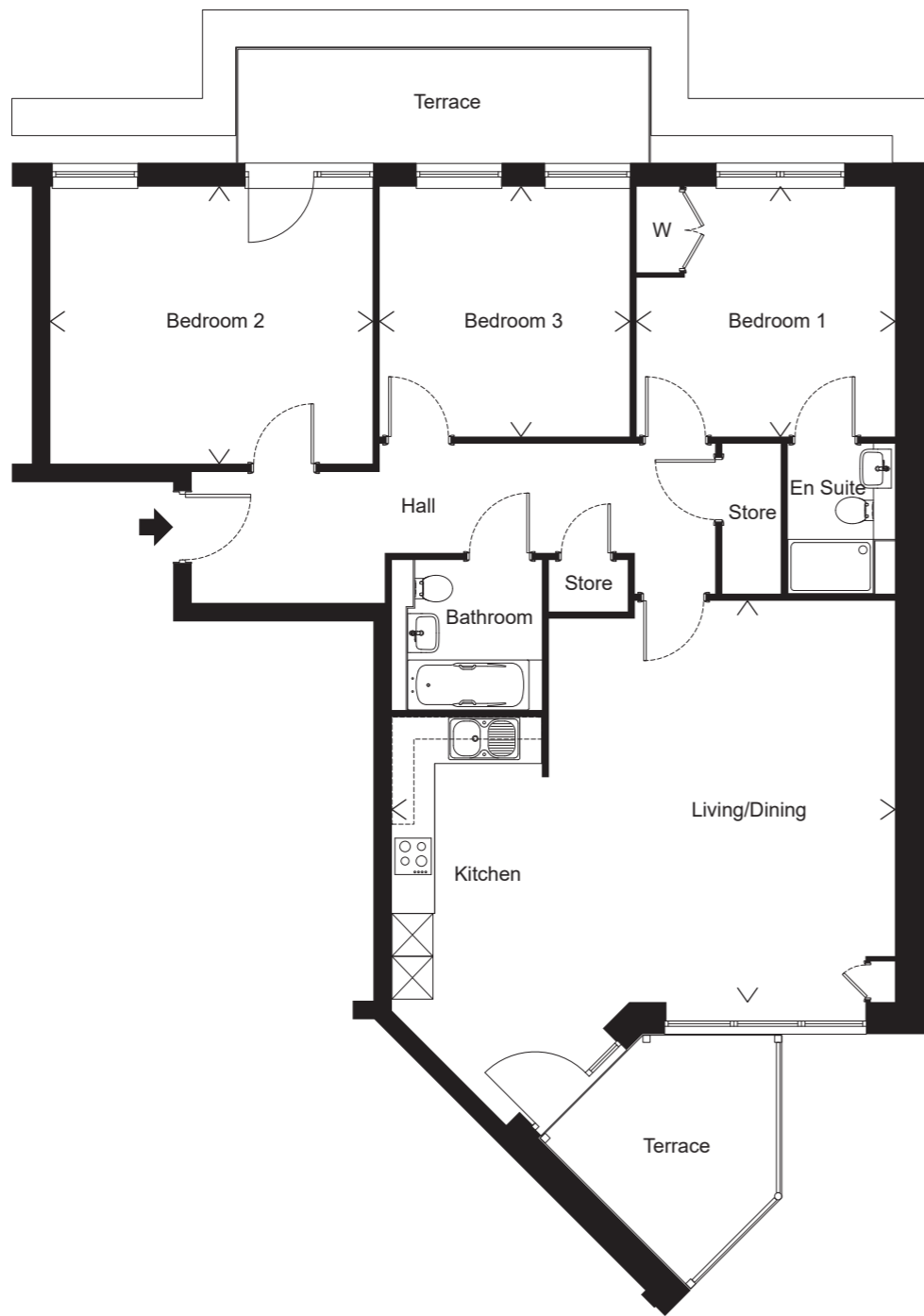
Plot 2.C.05
3 bedroom apartment
Second Floor
112m²/1,206ft²

Kitchen/Living/Dining
 7.99m x 6.02m
 26'2" x 19'9"

Bedroom 1
 5.06m x 4.74m
 16'7" x 15'6"

Bedroom 2
 5.87m x 3.07m
 19'3" x 10'1"

Bedroom 3
 5.06m x 2.41m
 16'7" x 7'11"



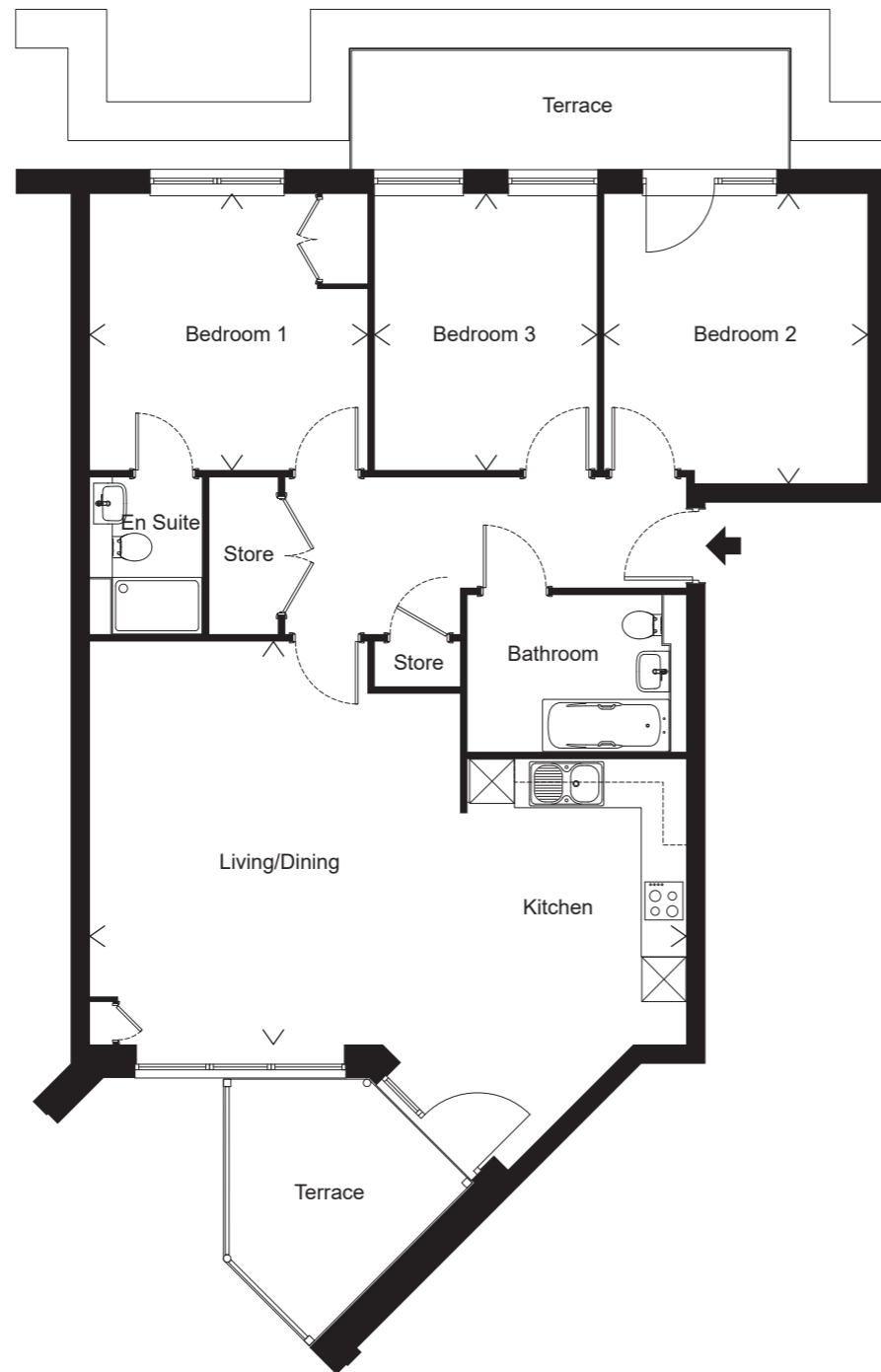
Plot 3.C.01
3 bedroom apartment
Third Floor
107m²/1,152ft²

Kitchen/Living/Dining
 7.05m x 5.62m
 23'1" x 18'5"

Bedroom 1
 3.62m x 3.50m
 11'10" x 11'6"

Bedroom 2
 4.51m x 3.88m
 14'9" x 12'9"

Bedroom 3
 3.50m x 3.50m
 11'6" x 11'6"



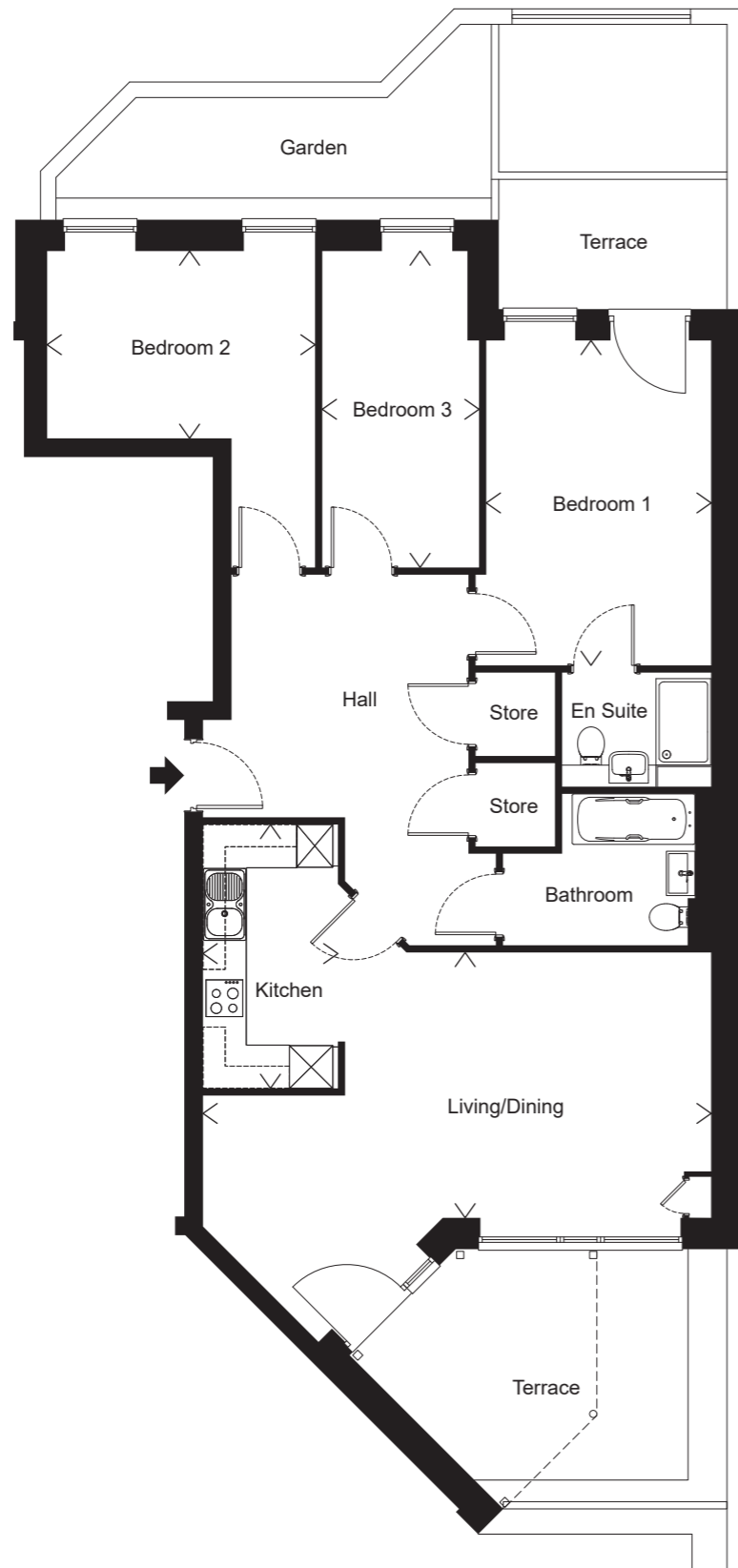
Plot 3.C.05
3 bedroom apartment
Third Floor
97m²/1,044ft²

Kitchen/Living/Dining
 7.99m x 5.40m
 26'2" x 17'8"

Bedroom 1
 3.72m x 3.70m
 12'2" x 12'2"

Bedroom 2
 3.88m x 3.53m
 12'9" x 11'7"

Bedroom 3
 3.70m x 2.98m
 12'2" x 9'9"



Plot G.C.01
3 bedroom apartment
Ground Floor
97m²/1,044ft²

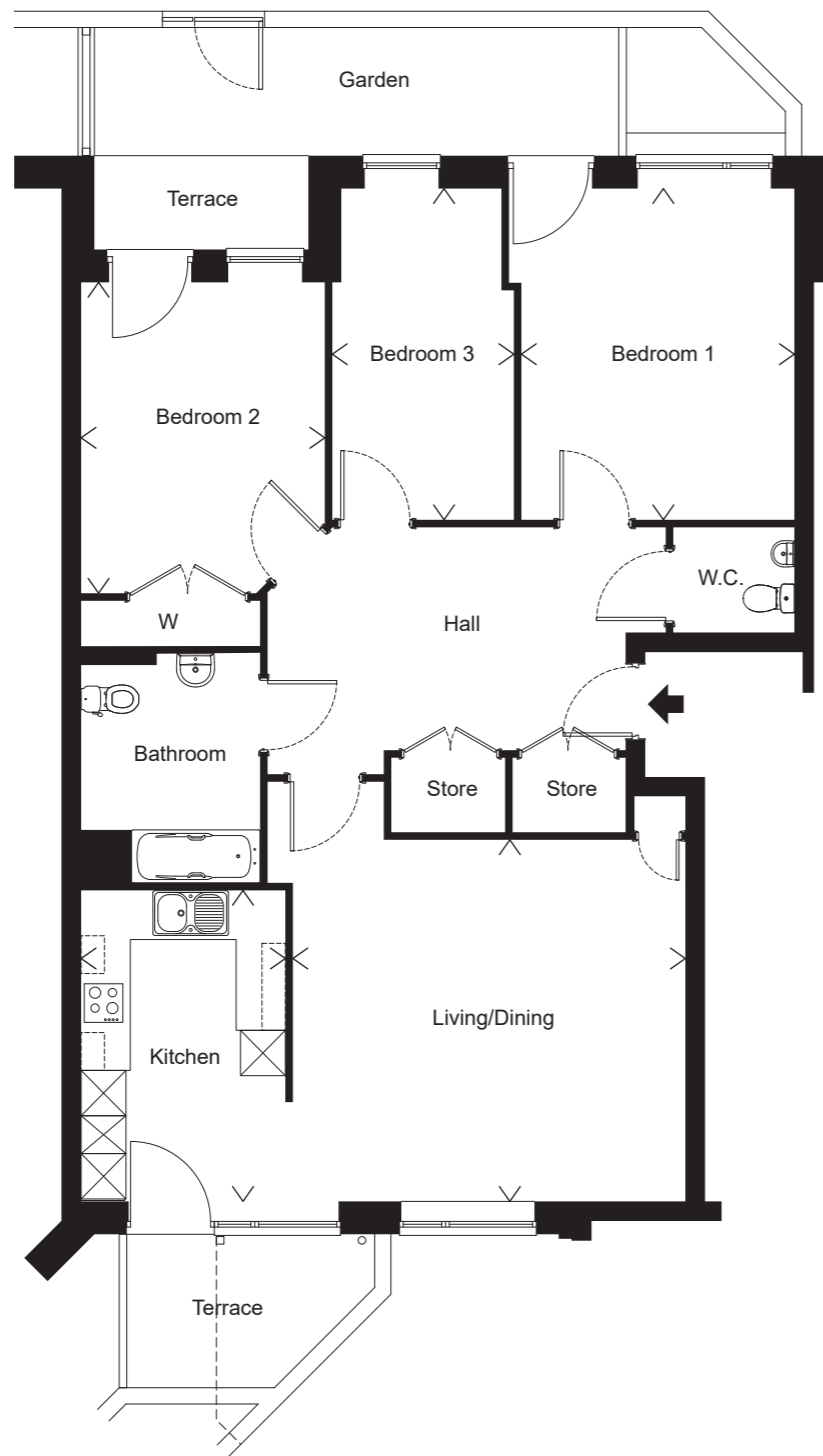
Living/Dining
 7.05m x 3.68m
 23'1" x 12'1"

Kitchen
 3.66m x 1.87m
 12'0" x 6'1"

Bedroom 1
 4.51m x 3.12m
 14'9" x 10'3"

Bedroom 2
 3.72m x 2.60m
 12'2" x 8'6"

Bedroom 3
 4.39m x 2.17m
 14'5" x 7'1"



Plot G.C.05
3 bedroom apartment
Ground Floor
105m²/1,130ft²

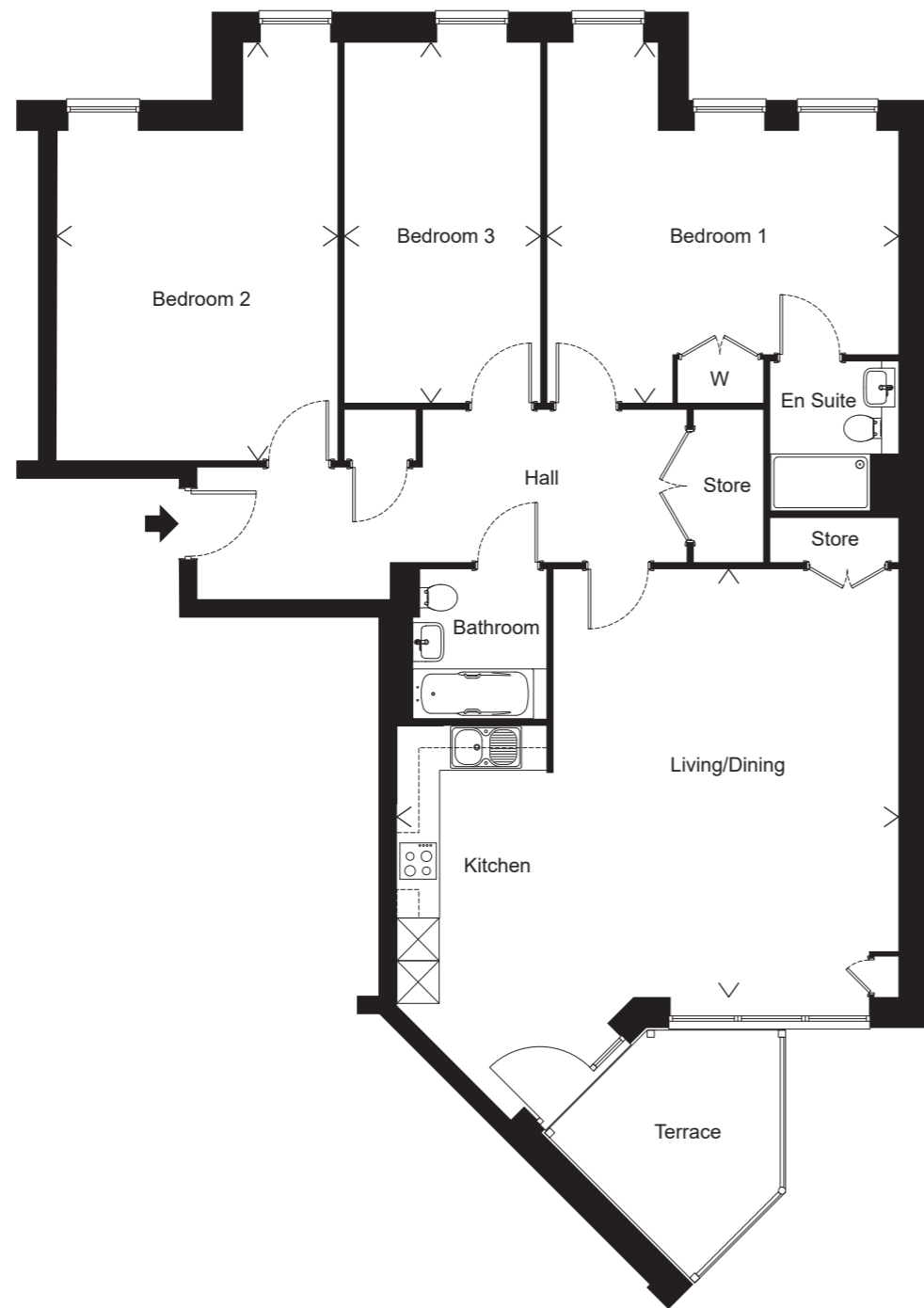
Living/Dining
 5.19m x 4.78m
 17'0" x 15'8"

Kitchen
 4.11m x 2.70m
 13'6" x 8'10"

Bedroom 1
 4.61m x 4.38m
 14'4" x 11'10"

Bedroom 2
 4.11m x 3.22m
 13'6" x 10'7"

Bedroom 3
 4.38m x 2.40m
 14'4" x 7'10"



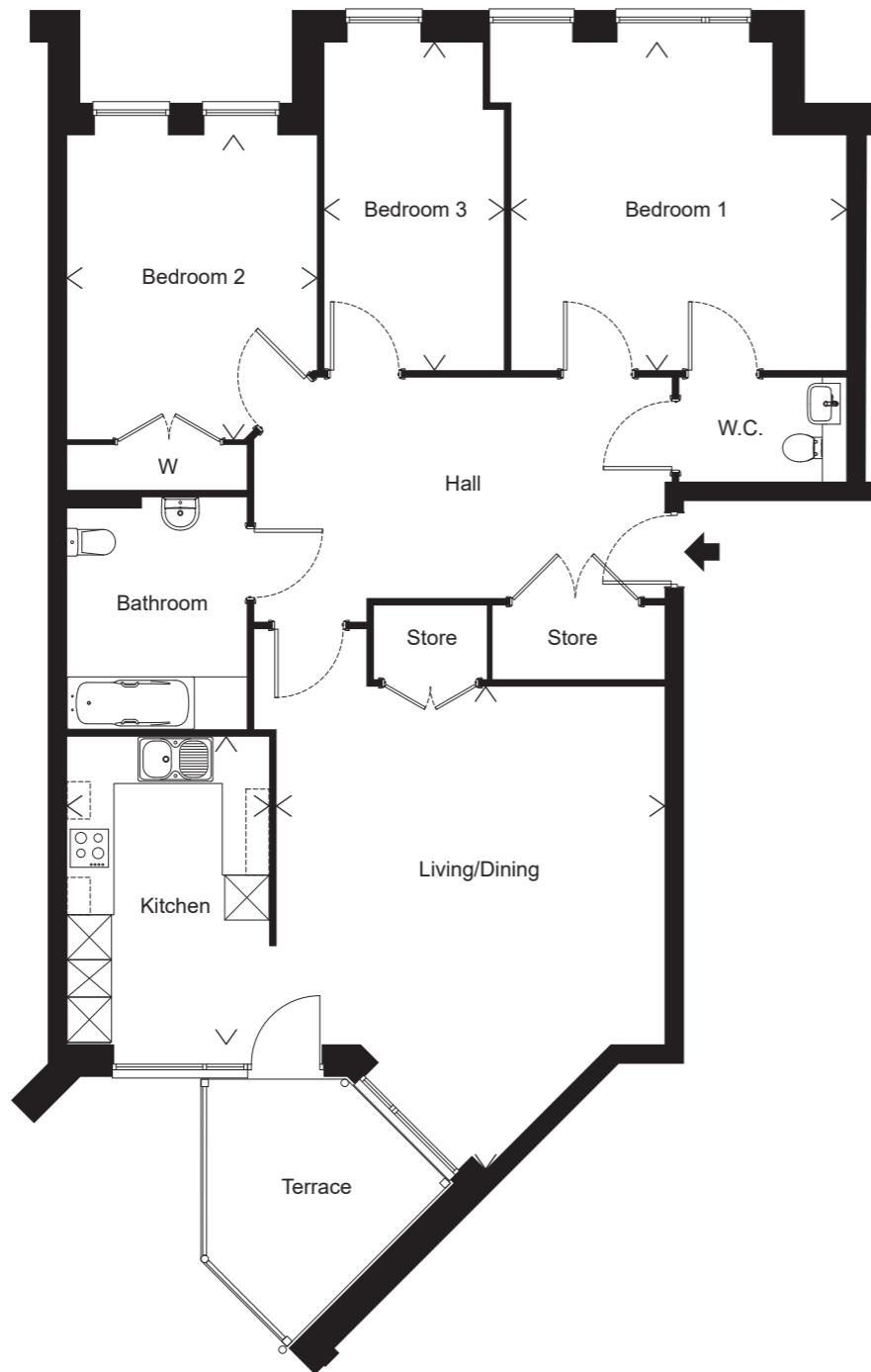
Plot 1.C.01
3 bedroom apartment
First Floor
123m²/1,324ft²

Kitchen/Living/Dining
 7.05m x 6.01m
 23'1" x 19'8"

Bedroom 1
 5.06m x 4.93m
 16'7" x 16'2"

Bedroom 2
 5.87m x 3.94m
 19'3" x 12'11"

Bedroom 3
 5.06m x 2.75m
 16'7" x 9'0"



Plot 1.C.05
3 bedroom apartment
First Floor
112m²/1,206ft²

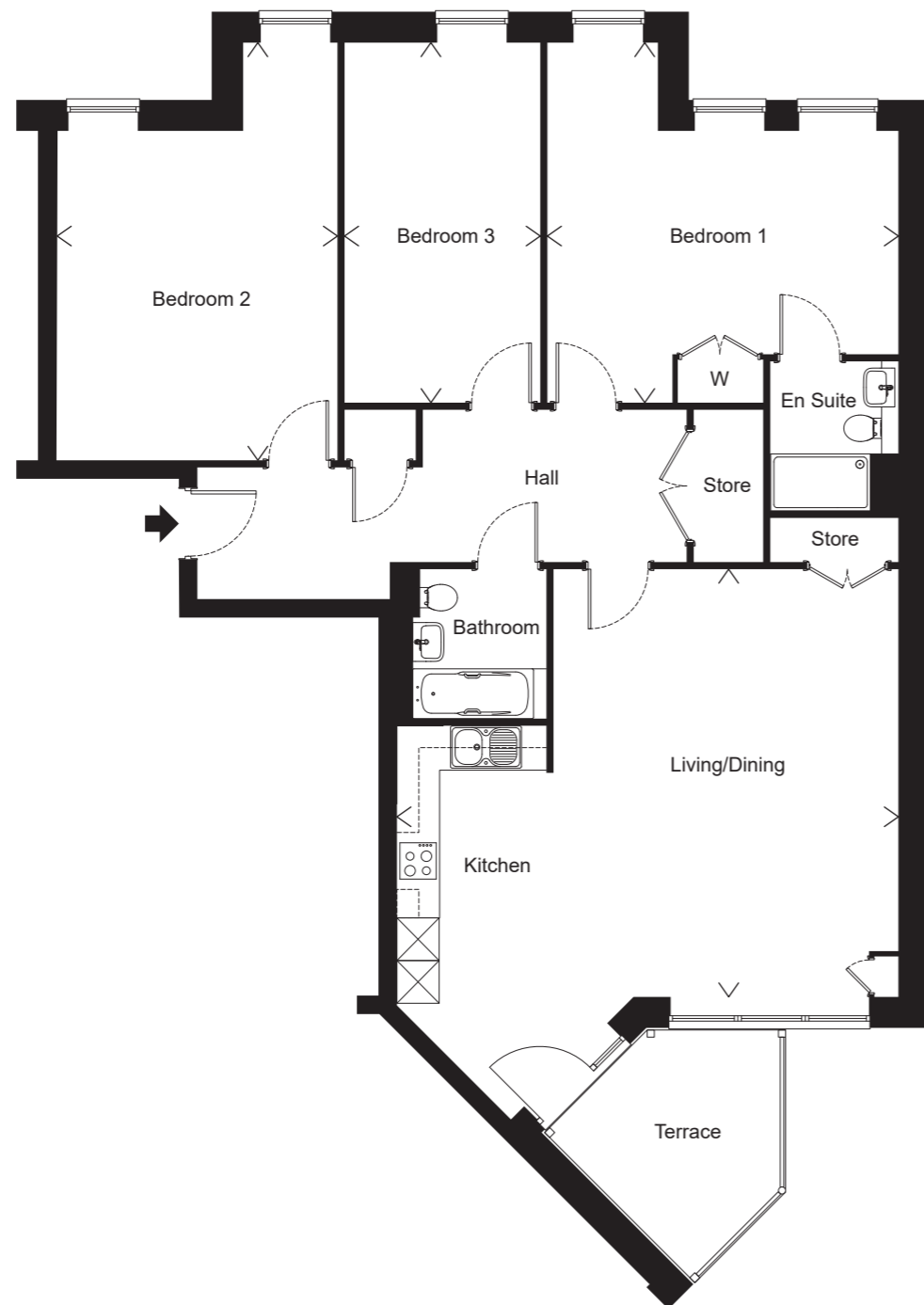
Living/Dining
 6.45m x 5.19m
 21'2" x 17'0"

Kitchen
 4.11m x 2.70m
 13'6" x 8'10"

Bedroom 1
 4.48m x 4.38m
 14'8" x 14'4"

Bedroom 2
 4.06m x 3.34m
 13'4" x 10'11"

Bedroom 3
 4.38m x 2.40m
 14'4" x 7'10"



Plot 2.C.01
3 bedroom apartment
Second Floor
123m²/1,324ft²

Kitchen/Living/Dining
 7.05m x 6.01m
 23'1" x 19'8"

Bedroom 1
 5.06m x 4.93m
 16'7" x 16'2"

Bedroom 2
 5.87m x 3.94m
 19'3" x 12'11"

Bedroom 3
 5.06m x 2.75m
 16'7" x 9'0"