

DRUMMOND PARK

Ludgershall, Wiltshire SP11 9TW

3 bedroom houses with private gardens and parking for **Shared Ownership**

AVAILABLE TO RESERVE OFF PLAN



DRUMMOND PARK

Ludgershall, Wiltshire SP11 9TW

Stonewater in partnership with developer Lovell present a collection of **new homes for shared ownership** at Drummond Park. Drummond Park is an exciting brand-new mixed tenure development in Ludgershall, Wiltshire, built on the site of the former Defence Medical Equipment Depot. There will be 412 homes in total, with 103 affordable homes available for shared ownership and affordable rent with Stonewater. Each house for shared ownership has a useful downstairs cloakroom with WC, off-street parking for two cars and a ready-turfed rear garden. The homes will be built in line with Stonewater's policy on sustainability and will benefit from the installation of Air Source Heat Pumps which may help to reduce energy costs.

As part of the development process Lovell will invest into local community services and facilities. These investments will go towards the construction of a new primary school, the expansion of Wellington Academy, local bus services, highways, and recycling facilities. Alongside the new homes, Drummond Park will also feature community parkland to the north of the site, including a wildflower meadow, walkway, and seating areas.

Ludgershall, a historic town situated on the edge of Salisbury Plain, is surrounded by picturesque rolling countryside. Not far from the centre of the town, the ruins of Ludgershall's Castle, now under the care of English Heritage, stand at the edge of the beautiful Collingbourne Wood. The town has a variety of shops including a butchers, two public houses, a post office and two doctors' surgeries. A Tesco superstore can be found in nearby Tidworth.

Ludgershall is conveniently situated on the A342 road between Devizes and Andover, 16 miles northeast of Salisbury. The nearby A303 and A338 makes commuting easy with connections further afield onto the M3 and M4. There are also half hourly bus services form Ludgershall to nearby towns. The nearest station is at Andover and trains to London take just over an hour and just over two hours to Exeter.



- Tidworth 2.4 miles
- Collingbourne Wood 2.8 miles
- Andover 7.7 miles
- Stonehenge 17 miles
- Salisbury 17.5 miles
- Devizes 19.2 miles
- Swindon 25.5 mile

SITE PLAN



PLOT 39

22 Kent Gardens, Ludgershall, Wiltshire SP11 9WH



3 bedroom end-of-terrace house

Parking space for 2 cars
Turfed rear garden
Downstairs WC

£126,000 for a 40% share

Open Market Value: **£315,000**

Monthly Rent: **£433.13**

Service Charge: **£38.40**

Illustration is indicative only



Please note that all sales particulars and images are for marketing and illustrative purposes only. Plans may contain elements which are not present upon the final completion of the property. All room dimensions are approximate and are for general guidance only.

PLOT 40

24 Kent Gardens, Ludgershall, Wiltshire SP11 9WH



3 bedroom mid-terrace house

Parking space for 2 cars
Turfed rear garden
Downstairs WC

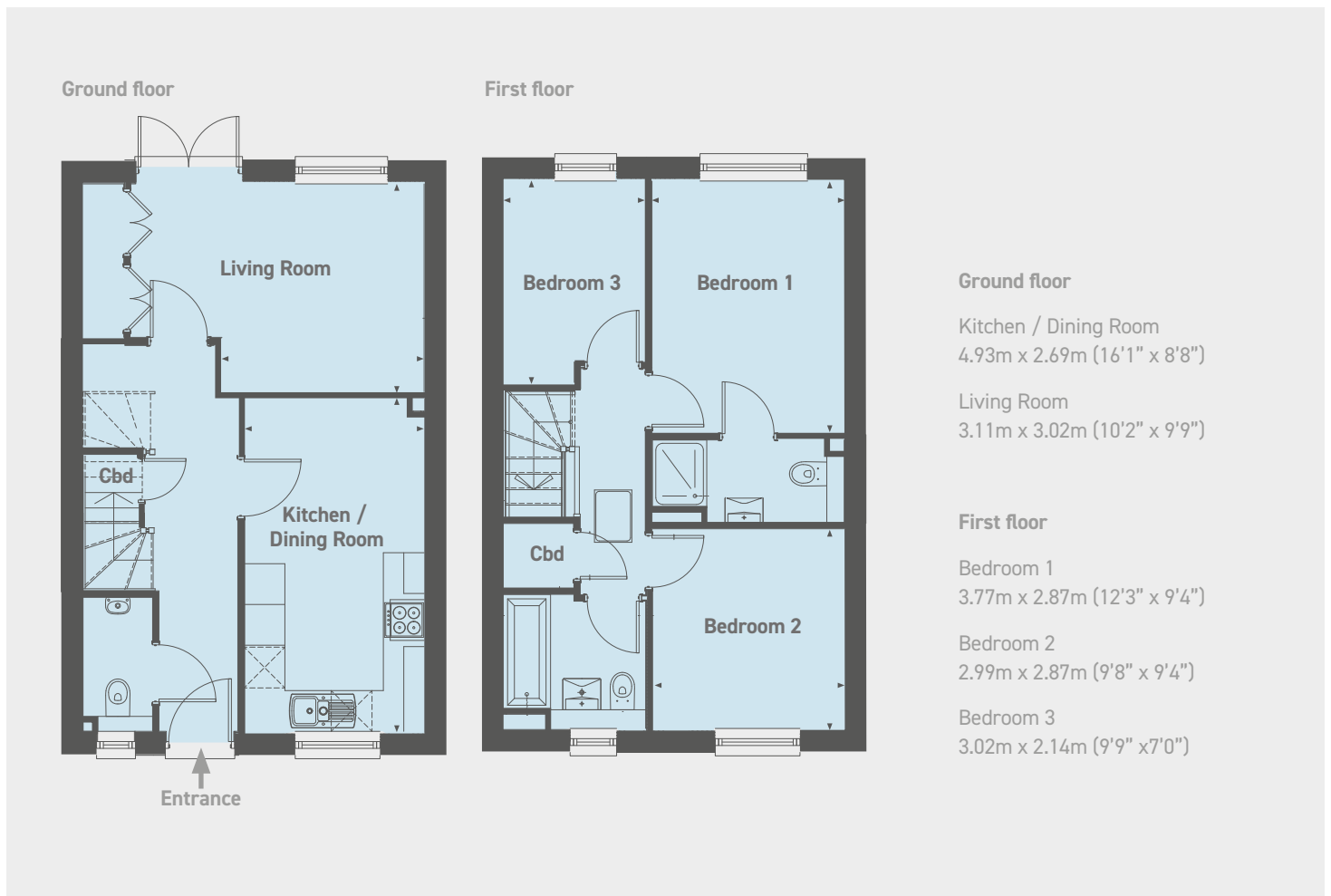
£126,000 for a 40% share

Open Market Value: **£315,000**

Monthly Rent: **£433.13**

Service Charge: **£38.40**

Illustration is indicative only



Please note that all sales particulars and images are for marketing and illustrative purposes only. Plans may contain elements which are not present upon the final completion of the property. All room dimensions are approximate and are for general guidance only.

DRUMMOND PARK

Ludgershall, Wiltshire SP11 9TW

Please note the most up-to-date availability can be found on our website www.stonewaterhomes.co.uk. Alternatively call the New Homes team to find out more on 02380 658 836

Further details are available upon request.

[FIND OUT ABOUT SHARED OWNERSHIP](#)

Please note that all sales particulars and images are for marketing and illustrative purposes only. Plans, computer generated images and photos may contain elements which are not present upon the final completion of the property.

