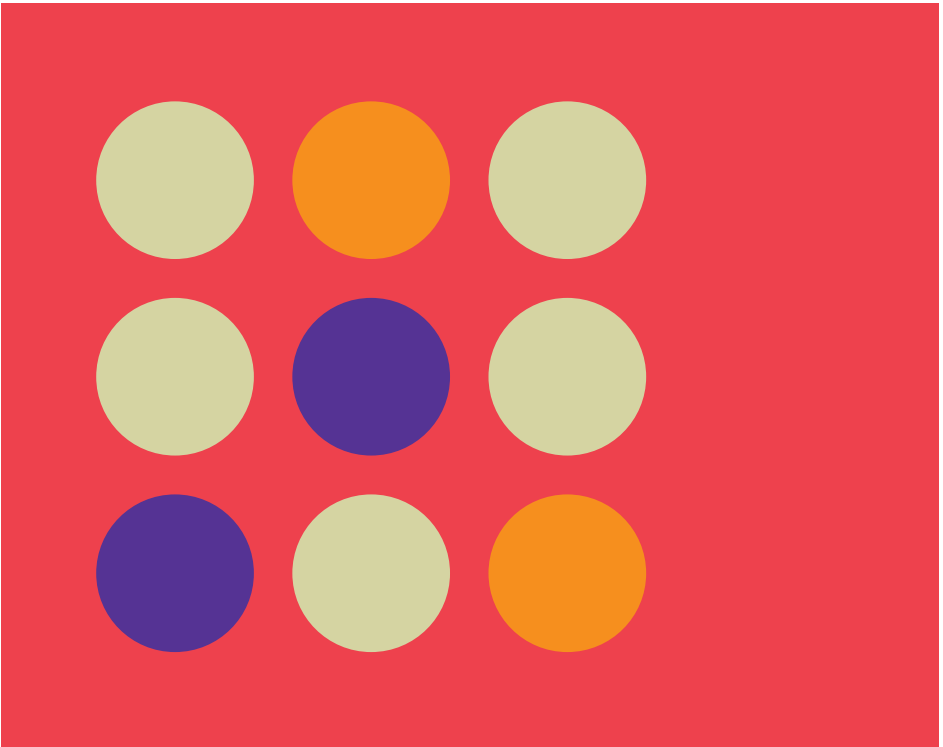


Longhurst Group at Waterbeach by Stonebond Homes Specification





Kitchen

Supplied by Rok Kitchens

All kitchens will benefit from:

- ▶ Sleek cabinet units with matching plinths, joins and decorative panels
- ▶ Laminate worktop with matching upstand
- ▶ Single conventional oven, ceramic hob and extractor
- ▶ Contemporary splashback to all cookers
- ▶ Stainless steel 1.5 bowl kitchen sink with mixer tap
- ▶ Integrated fridge freezer
- ▶ Space for washing machine
- ▶ Sockets sufficient for all appliances
- ▶ Decorative chrome spotlight fitting
- ▶ Vinyl flooring provided to wet areas.

N.B The above image has been used for illustration purposes only.

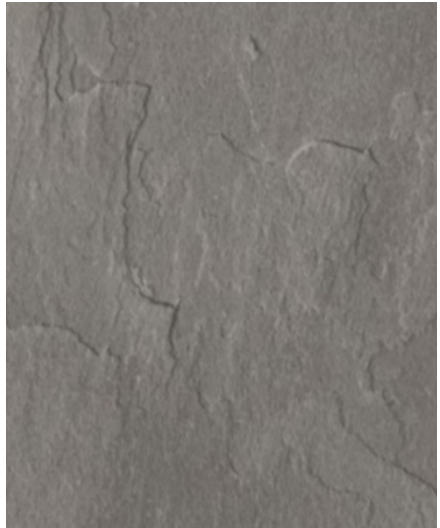
Combination A

ER range in Blanco Soft.

These images are for illustrative purposes only and are not a photograph representative of what has been installed at Longhurst Group at Waterbeach, Cambridgeshire by Stonebond Homes.



Blanco Soft cupboard



Deep Slate worktop



Comfytex deluxe vinyl flooring in San Remo 592



MCAB in nickel handle

Combination B

ER range in Ice.

These images are for illustrative purposes only and are not a photograph representative of what has been installed at Longhurst Group at Waterbeach, Cambridgeshire by Stonebond Homes.



Ice cupboard



Glacial Storm worktop



Comfytex deluxe vinyl flooring in Tavel 535



MCAB in nickel handle

Bathroom

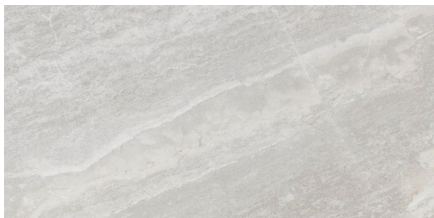
Bath is by Kaldewei Eurowa. Sink by Roca.

All bathrooms will benefit from:

- ▶ Contemporary three-piece white suite comprising of bath, wash basin and WC
- ▶ Sleek shower screen fitted in The Hampden, The Wellington, The Beaufort and The Halifax only
- ▶ Chrome tap
- ▶ Floor to ceiling tiling around bath, tile splashback to wash basin and windowsill.
- ▶ Vinyl flooring.

Combination A

Indic tiles by Porcelanosa

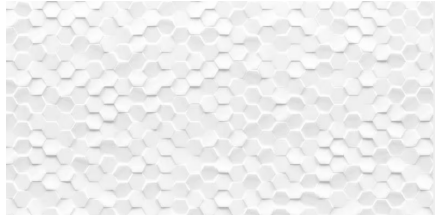


Comfytex deluxe vinyl flooring in Camarque 571

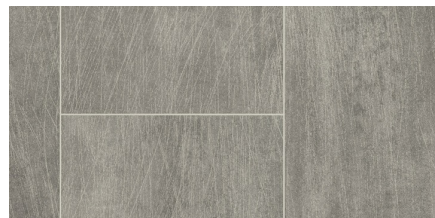


Combination B

Dubai White tiles by Porcelanosa



Comfytex deluxe vinyl flooring in Brighton 594



WC

Supplied by Roca.

All WCs will benefit from:

- ▶ Contemporary two-piece white suite comprising of wash basin and WC
- ▶ Chrome tap
- ▶ Vinyl flooring.

En Suite

Supplied By Roca. En suites available in The Dakota, The Oxford, The Warwick, The Swift and The York only.

All en suites will benefit from:

- ▶ Contemporary two-piece white suite comprising of wash basin and WC
- ▶ Separate shower unit
- ▶ Chrome tap
- ▶ Matching tiles and vinyl flooring to bathroom.

General (Internal and external finishes)

All homes will benefit from:

- ▶ Composite external doors
- ▶ Contemporary external PIR lighting to the front of all houses
- ▶ Voice only entry system to all apartments
- ▶ Smoke alarms fitted as standard
- ▶ Matt white emulsion decoration to ceiling and walls, with gloss white paint to woodwork throughout
- ▶ White glossed interior doors with chrome ironmongery
- ▶ TV points in lounge
- ▶ Fully enclosed rear gardens with timber fencing and lockable gate where applicable.

All images are used for illustrative purposes only and are representative only. They may not be the same as the actual home you purchase and the specification may differ. Images may be of a slightly different model of home, individual features such as windows, brick, carpets, paint and other material colours may vary and also the specification of fittings may vary. Any furnishings and furniture shown are not included in any sale. Please check with a member of our sales team for details of the exact specification for each property type and the associated prices.

Finishes Combinations



Block A

- The Dakota**
2 bedroom apartment
- The Oxford**
2 bedroom apartment
- The Warwick**
2 bedroom apartment

Block D

- The Hampden**
1 bedroom apartment
- The Wellington**
2 bedroom apartment
- The Beaufort**
2 bedroom apartment
- The Halifax**
2 bedroom apartment
- The Swift**
3 bedroom home
- The York**
3 bedroom home

Plot	Combination	Plot	Combination
5	A	44	A
10	B	45	B
12	B	46	A
15	A	53	B
23	B	59	A
24	A	78	B
26	B	79	A