



Persona Homes

by Home Group

LONGRIDGE FARM

Bedlington

Whitton

Discover the Whitton, a great 3-bedroom home that's designed for family living.

The Whitton has a great open-plan kitchen/dining room and a generous living room that will be the real heart to the home. Add to this three bedrooms, a modern bathroom and handy downstairs cloakroom, there is enough room for the whole family.



Contact us:

T: 0800 030 8888

E: contactus@yourpersonahome.com

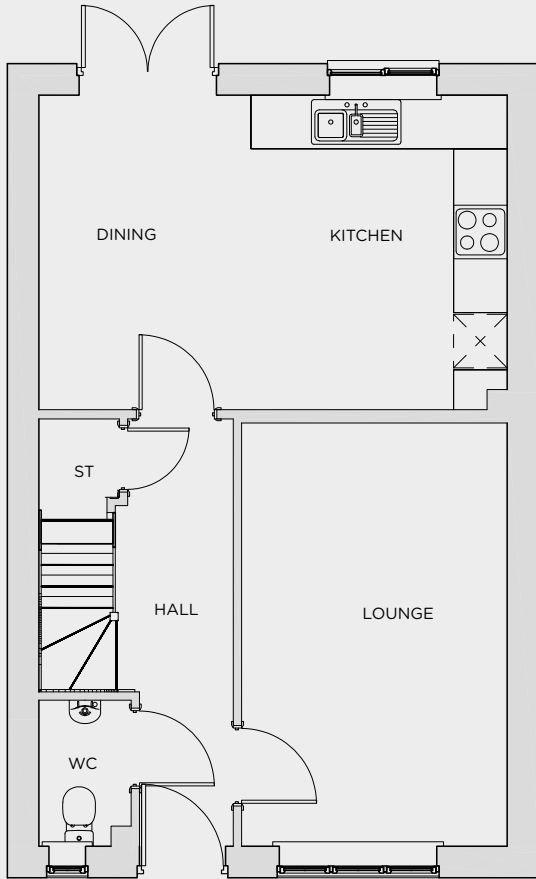
W: yourpersonahome.com

Choppington Road, Bedlington, NE22 6LA



Ground floor

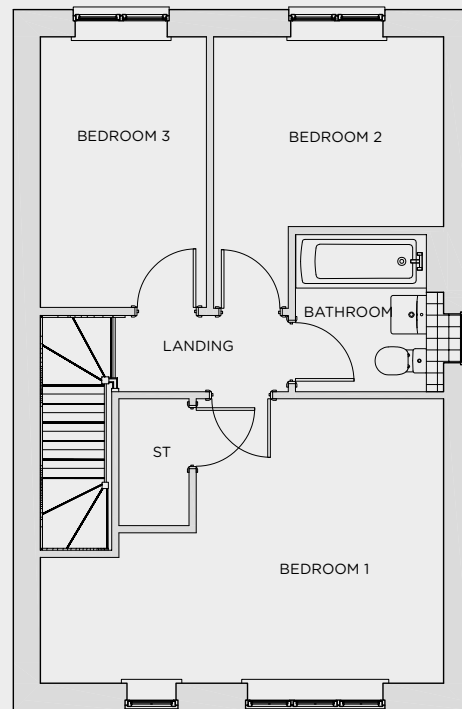
Lounge	2.96m × 4.73m
Kitchen	2.86m × 3.51m
Dining	2.37m × 3.51m



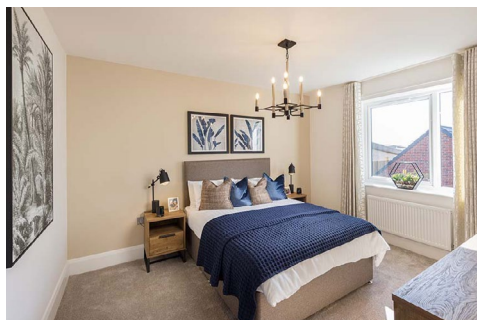
Ground floor

First floor

Main bedroom	3.21m × 3.69m
En-suite	1.92m × 1.95m
Bedroom 2	2.98m × 2.46m
Bedroom 3	2.15m × 3.51m
Bathroom	1.7m × 2.04m
Total Area	87.99m ²



First floor



Any floor plans are a general outline of the layout of the property for guidance only. All measurements are approximate and may vary and any intending purchasers should not rely on them as statements of fact or representations of fact but must satisfy themselves by inspection or otherwise as to their accuracy. Dimensions shown are not intended to be relied upon for installation of appliances or items of furniture or otherwise. CGI's and images are for illustrative purposes only. Specifications are subject to change. Images are indicative only and may be of previous developments.*Journey times and distances taken from google.com/ maps and are correct before going to print. All times and distances listed are approximate and may vary depending on time of travel.