



Persona Homes

by Home Group

MOWBRAY VIEW

YORKSHIRE

Mountford

3-bedroom house

A home designed for today's modern living

With a great open-plan kitchen and dining space that opens out onto the garden, this space will be the real heart to the home. Add to this three bedrooms, an en-suite to the main bedroom, a modern bathroom and handy downstairs cloakroom, there is enough room for the whole family.



Contact us:

T: 0800 030 8888

E: contactus@yourpersonahome.com

W: yourpersonahome.com

Thirsk, YO7 3SH

Ground floor

Kitchen/dining area 5.64m x 2.69m

Living room 5.59m x 3.11m



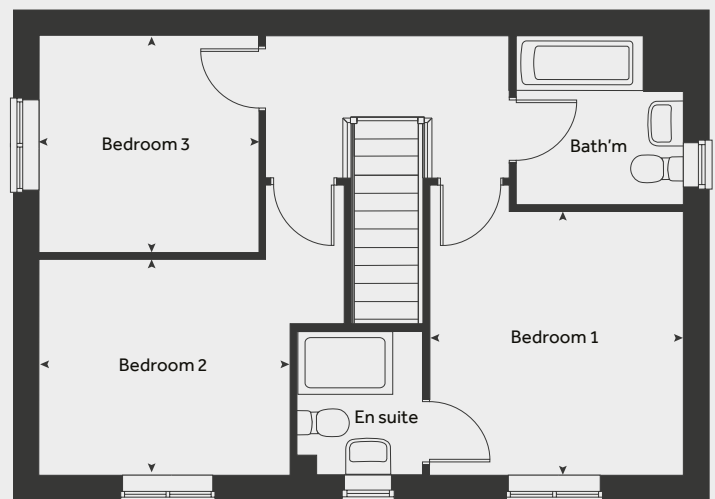
First floor

Bedroom 1 3.35m x 3.12m

Bedroom 2 3.14m x 2.74m

Bedroom 3 2.76m x 2.76m

Total area 90.12 m²



Any floor plans are a general outline of the layout of the property for guidance only. All measurements are approximate and may vary and any intending purchasers should not rely on them as statements of fact or representations of fact but must satisfy themselves by inspection or otherwise as to their accuracy. Dimensions shown are not intended to be relied upon for installation of appliances or items of furniture or otherwise. CGI's and images are for illustrative purposes only. Specifications are subject to change. Images are indicative only and may be of previous developments. *Journey times and distances taken from google.com/ maps and are correct before going to print. All times and distances listed are approximate and may vary depending on time of travel.