

54 Bramshaw Gardens, Watford, WD19 6XP

1 bedroom bungalow for
Shared Ownership from
£106,000 for a 40% share

Property overview This newly refurbished bungalow is ideal for first-time buyers or downsizers. This home comprises one bedroom looking onto the South facing garden, separate shower and toilet, a light and airy living room and a fully fitted modern kitchen.



Specification

- 990-year lease
- Council Tax Band B
- White internal doors
- Walls in Dulux white matt emulsion
- Minoli Foster Light tiling to kitchen
- Amtico Spacia flooring to kitchen, dining and living room
- Fitted carpets in bedrooms
- Howdens Dove Grey kitchen
- Fridge/freezer, washing machine and oven
- Stainless steel splash back
- Stainless steel bowl sink
- Roca bathroom and WC suite
- Glass shower screen & thermostatic mixer tap
- Heated towel rail
- Service charge inclusive of building insurance

Features include:



1 bedroom
bungalow



Off-street
parking



Located in
South Oxhey



Superb
specification

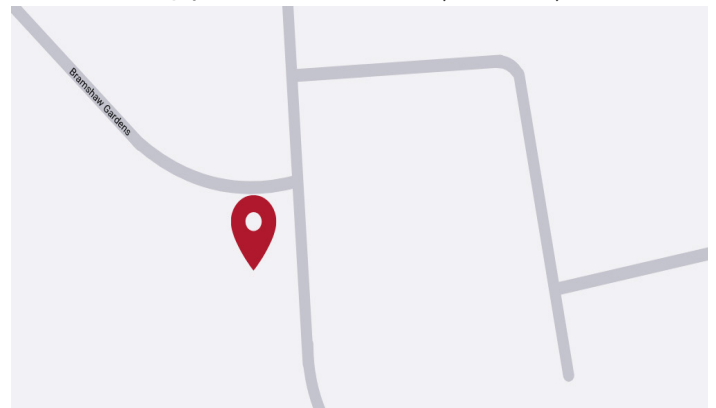


3 minute drive to
Carpenders Park
station



Kitchen with
integrated appliances

Location 54 Bramshaw Gardens, Watford, WD19 6XP



Call: 020 7539 3745 **Email:** thrive@redloft.co.uk

Visit: redloftproperty.co.uk/thrive

Disclaimer: We have made every effort to accurately describe the property in this brochure. However, prospective buyers should treat these details as a general guide, not as definitive representations or facts.

Thrive

SELLING AGENT

redloft

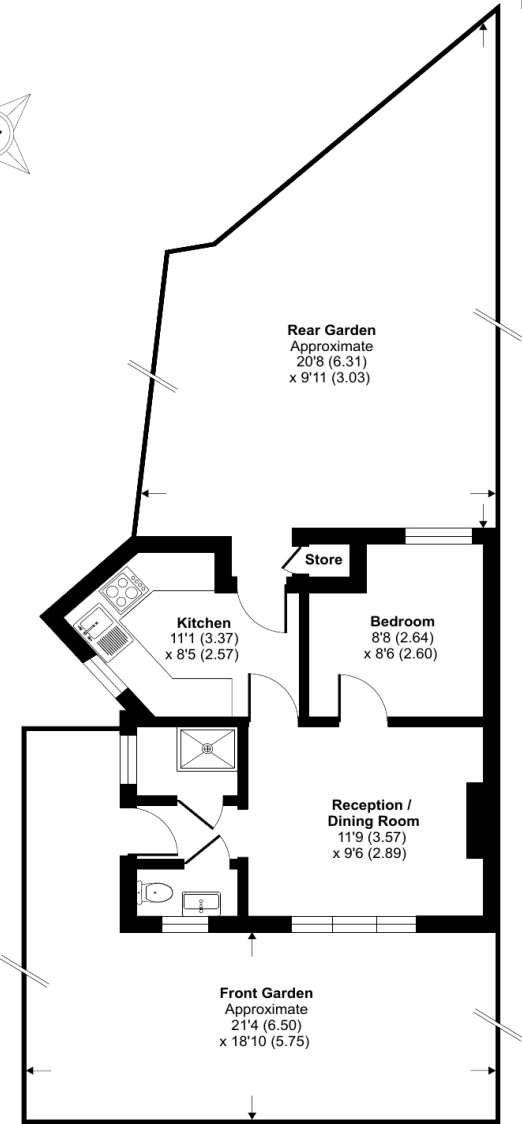
54 Bramshaw Gardens, Watford, WD19 6Xp

Floor Plan

Bramshaw Gardens, Watford, WD19

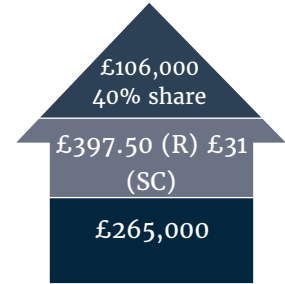
Approximate Area = 320 sq ft / 29.7 sq m (excludes store)

For identification only - Not to scale



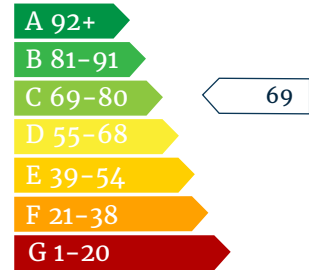
GROUND FLOOR

Shared Ownership Example



Rent & service charges are monthly. Rent charged at 3% on unsold share.

Energy Performance



1 bedroom bungalow

Kitchen	2.61m x 2.95m	8'7" x 9'8"
Living/ Dining Room	2.89m x 3.57m	9'6" x 11'9"
Bedroom	2.61m x 2.65m	8'7" x 8'8"
Total Gross Internal	28.9 m² / 311.5 ft²	

Floor plan produced in accordance with RICS Property Measurement Standards incorporating International Property Measurement Standards (IPMS2 Residential). © nichecom 2024. Produced for Red Loft Limited Liability Partnership. REF: 1133571

redloft

Call: 020 7539 3745 Email: thrive@redloft.co.uk

Visit: redloftproperty.co.uk/thrive

Disclaimer: The floor plans are for reference only and are not to scale. Dimensions and layouts are approximate. Prospective buyers should independently verify all details.

Thrive

SELLING AGENT

redloft