



Thompson Road, PL5 4AL

Available from £92,000

3 Bedroom Shared Ownership Home

Make the dream of home ownership a reality with shared ownership

3 bedrooms

Gas central heating

1 parking space

Council Tax Band C

How much does it cost?

Full market value £230,000

Share 40%

Share price £92,000

Rent charge £329.35 p/m

Service charge £20.72 p/m*

Rent charge and service charges as of April 2024.

*estimated charges

The accommodation comprises....

Ground floor

This well-presented home features a neutral kitchen with modern appliances. The separate, spacious living room is finished with neutral decor and opens onto the private rear garden, laid to lawn with a patio. Completing the ground floor is a downstairs WC and cupboard.

Kitchen 3.20m x 2.83m

Living / Dining Room 5.02m x 4.13m

WC 1.06m x 1.89m





First Floor

On the first floor there are two double bedrooms, one single bedroom, a family bathroom and an added cupboard.

Single bedroom	2.30m x 3.09m
Double bedroom	2.62m x 4.21m
Twin bedroom	2.7m x 4.30m
Bathroom	2.2m x 1.72m



Outside

Front

Allocated parking for two vehicles.

Rear

Externally, the property has a private rear south facing garden laid to lawn with a patio area.



Lease details

The term of the lease for this property is 125 years from 17th January 2019.

Builder Warranty

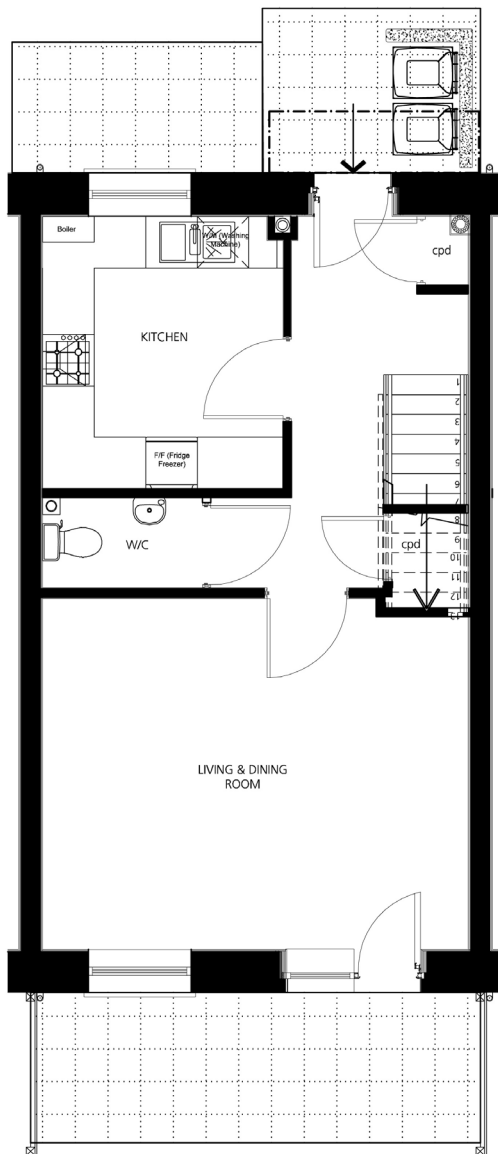
LABC warranty expires 1st May 2030

Energy Efficiency Rating

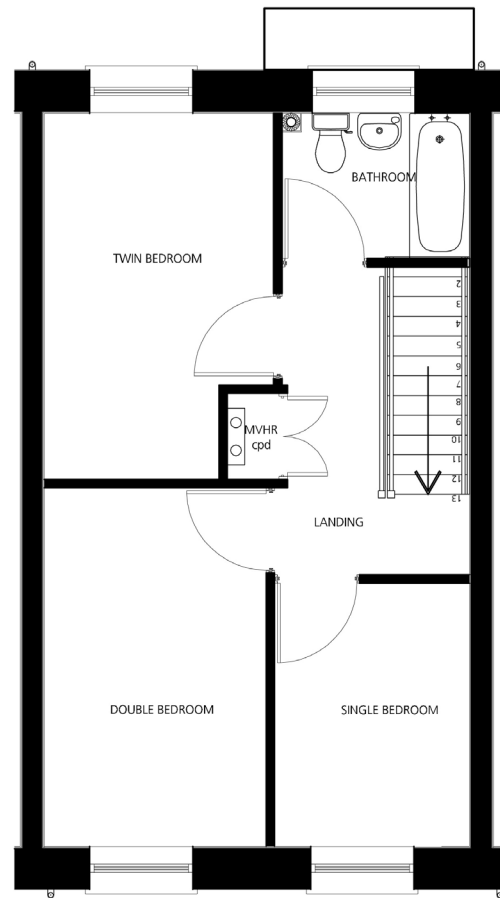
Score	Energy rating	Current	Potential
92+	A		98 A
81-91	B	87 B	
69-80	C		
55-68	D		
39-54	E		
21-38	F		
1-20	G		



Floorplan



Ground floor



First floor

Disclaimer: These particulars are issued in good faith and do not constitute representation or fact or form part of any contract or offer. These particulars should be independently verified by prospective buyers. Neither SO-Living, Plymouth Community Homes or any of its employees or agents has any authority to make or give any representation or warranty whatever in relation to this property, any floor plans are representation floor plans for visual purposes only. Please note that the size and position of objects such as doors and windows have not been measured and are not to scale. SO- Living/Plymouth Community Homes cannot be held responsible for inferences that may be drawn from these.

These particulars have been produced by SO Living on behalf of the vendor 18/06/2024.

Apply now at www.so-living.co.uk

