



CABLE WHARF

by

love livinghomes

Argus Heights

Northfleet, Gravesend DA11 9AA

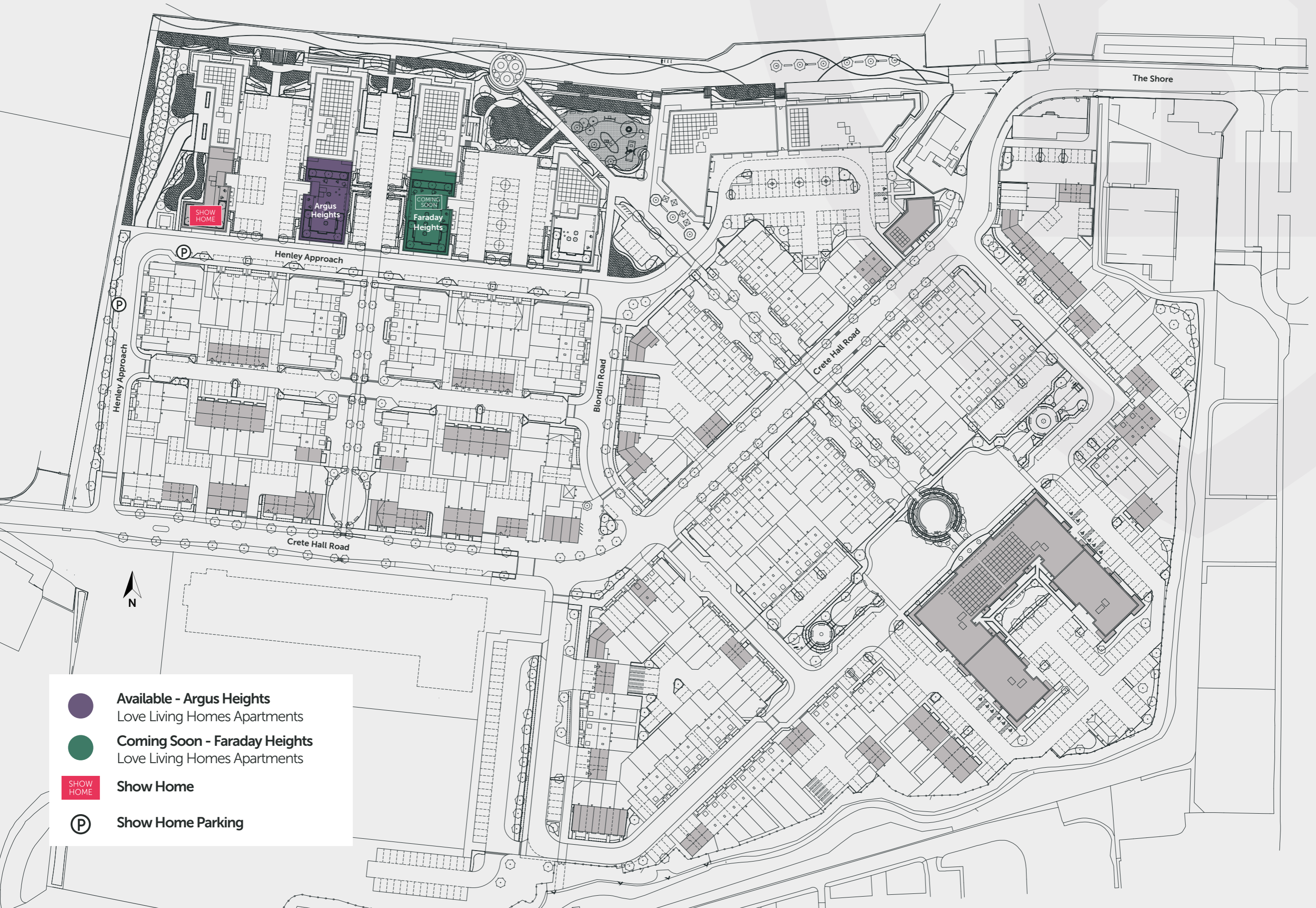


Artistic impression. Elevation treatments are subject to change.

**A highly sought-after key commuter location.
Enjoy fast access into London St Pancras in 23 minutes.**



Cable Wharf site plan



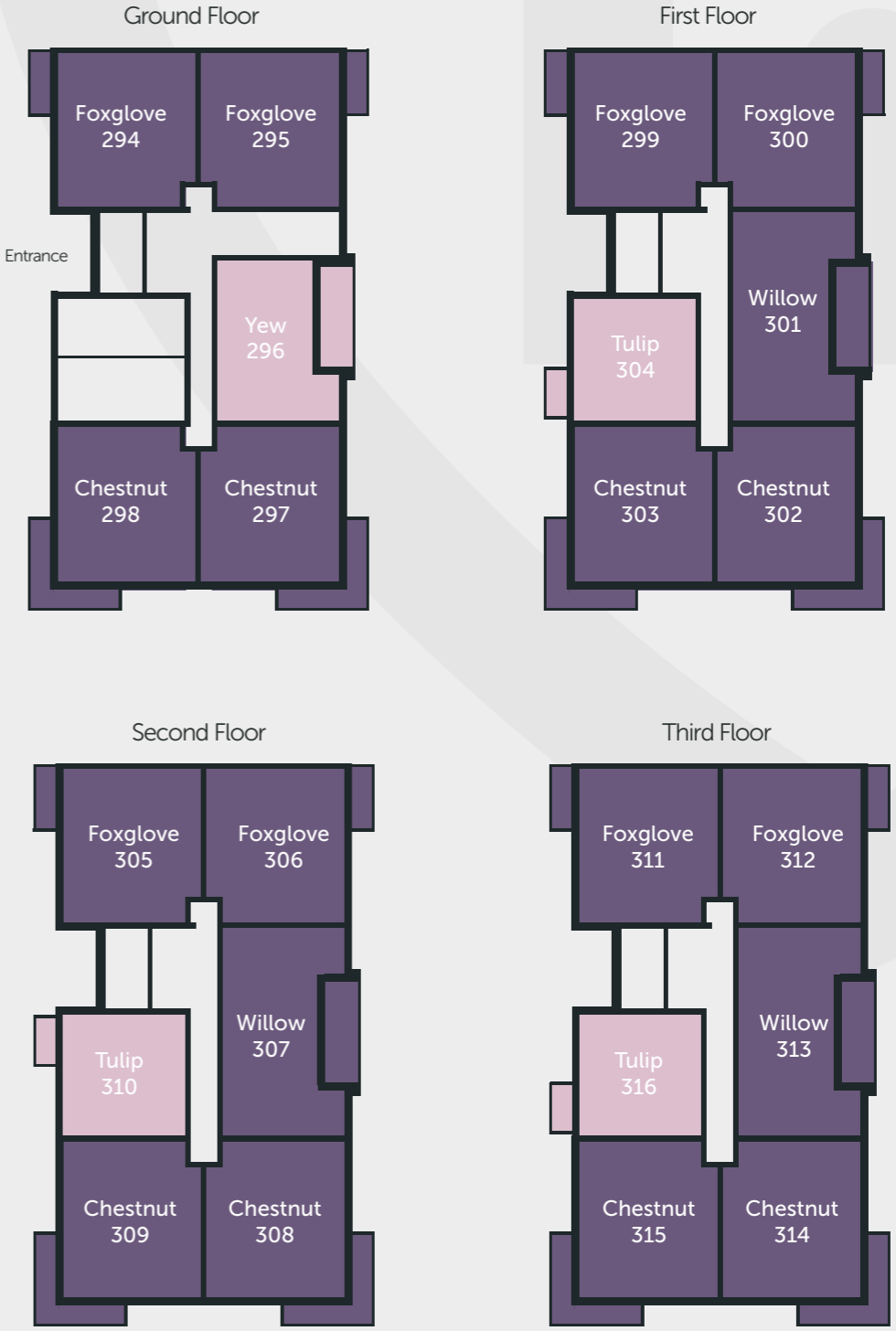
- Available - Argus Heights
Love Living Homes Apartments
- Coming Soon - Faraday Heights
Love Living Homes Apartments
- SHOW HOME Show Home
- Ⓟ Show Home Parking

Argus Heights



Argus Heights is a 4 storey development attached to a taller 6 storey building by the waterfront.

Argus Heights Block Floor Layouts

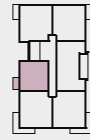


- 1 Bedroom Apartments
- 2 Bedroom Apartments





Tulip



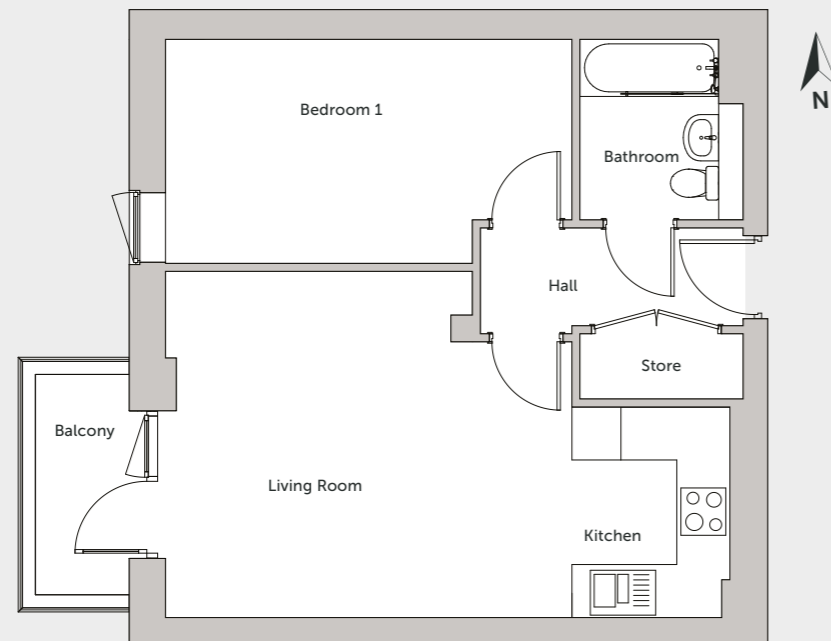
50.0 sqm / 538 sqft



1 Bedroom



1 Bathroom



DIMENSIONS

KITCHEN

2581mm x 1934mm - 8'5" x 6'4"

LIVING ROOM

4978mm x 4242mm - 16'4" x 13'11"

BATHROOM

2212mm x 2000mm - 7'3" x 6'6"

BEDROOM 1

4978mm x 2745mm - 16'4" x 9'0"

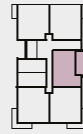
PLOTS

FLOOR PLOT

1F	304
2F	310
3F	316



Yew



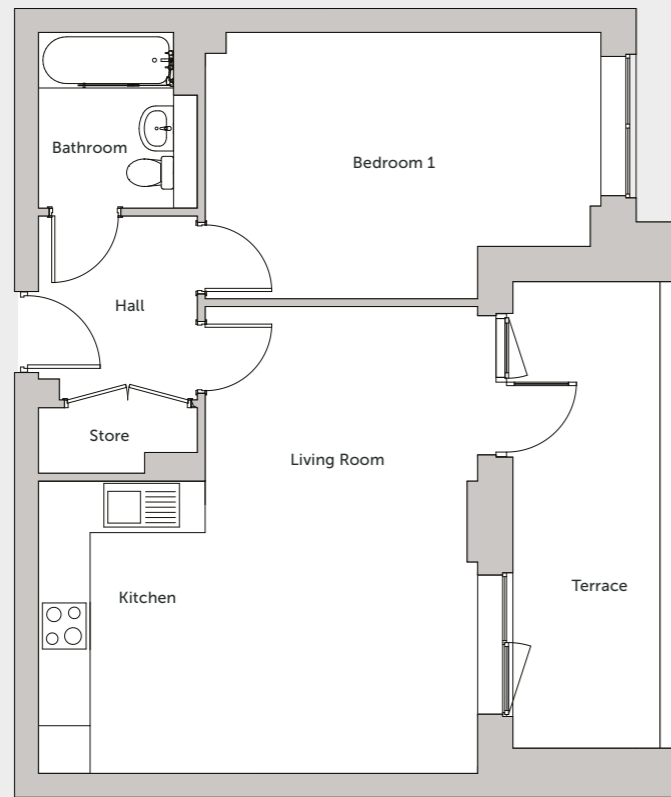
55.5 sqm / 597 sqft



1 Bedroom



1 Bathroom



DIMENSIONS

KITCHEN

3679mm x 2097mm - 12'1" x 6'10"

LIVING ROOM

5874mm x 3428mm - 19'3" x 11' 3"

BATHROOM

2213mm x 2000mm - 7'3" x 6'6"

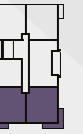
BEDROOM 1

4977mm x 3352mm - 16'4" x 10'11"

PLOTS

FLOOR	PLOT
GF	296

Chestnut



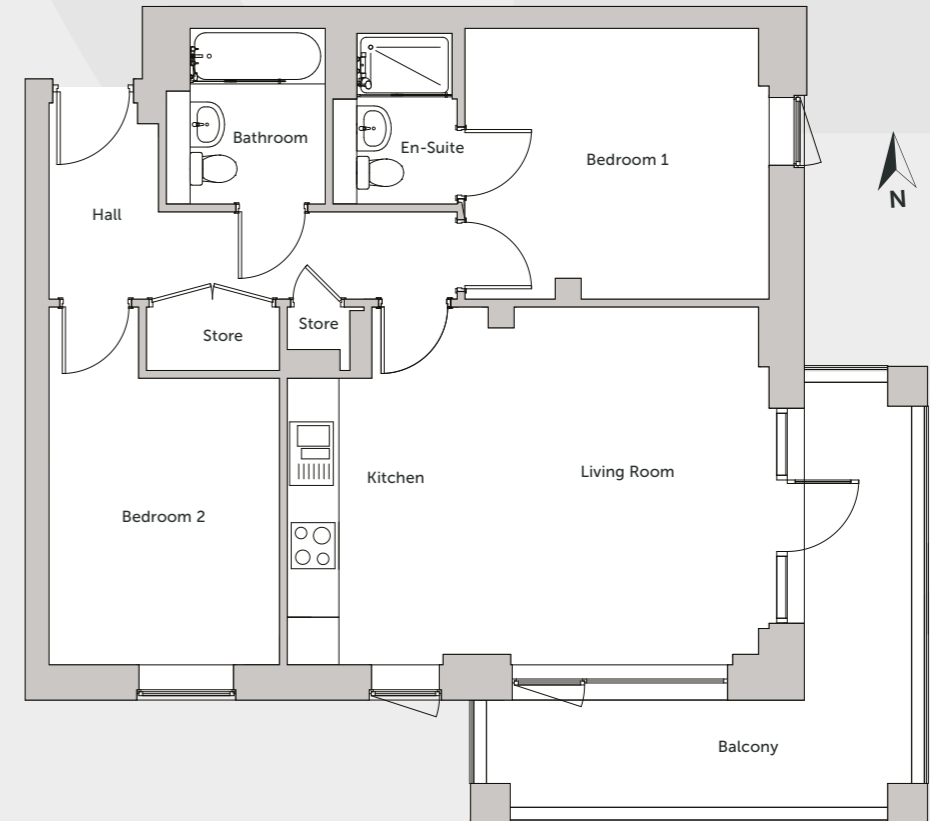
71.1 sqm / 765 sqft



2 Bedrooms



2 Bathroom



DIMENSIONS

KITCHEN

3608mm x 1063mm - 11'10" x 3'6"

LIVING ROOM

4867mm x 4373mm - 15'11" x 14'4"

BATHROOM

2213mm x 2000mm - 7'3" x 6'6"

BEDROOM 1

3695mm x 3410mm - 12'1" x 11'2"

BEDROOM 2

4505mm x 2900mm - 14'9" x 9'6"

PLOTS

FLOOR	PLOTS
GF	297 + 298
1F	302 + 303
2F	308 + 309
3F	314 + 315

Foxglove



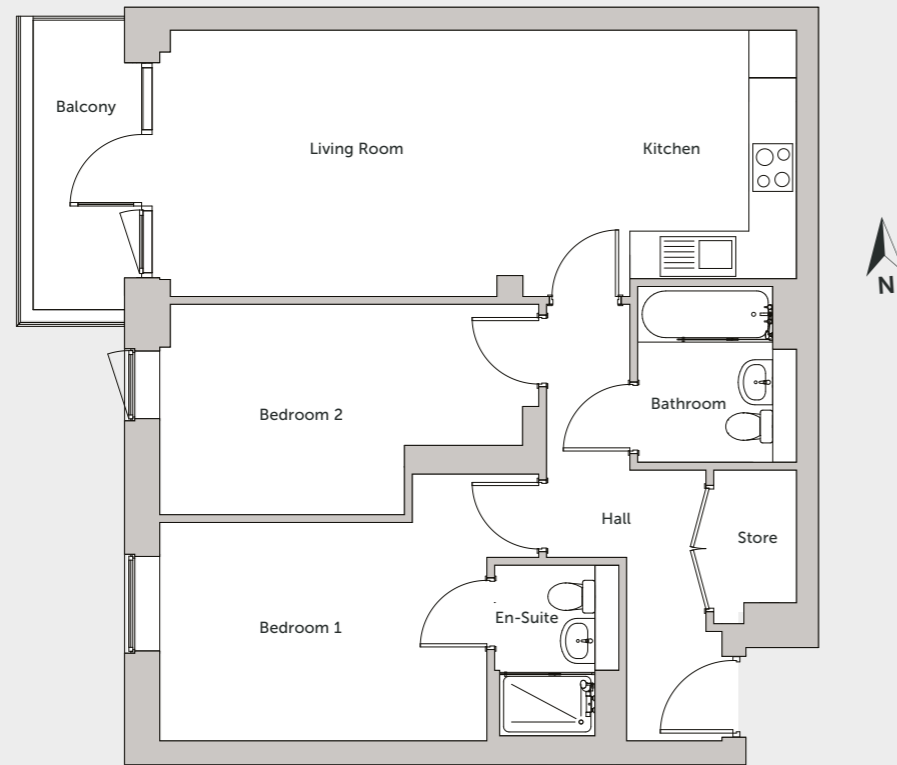
70.1 sqm / 754 sqft



2 Bedrooms



2 Bathroom



DIMENSIONS

KITCHEN

3130mm x 2097mm - 10'3" x 6'10"

LIVING ROOM

5915mm x 3353mm - 19'5" x 11'0"

BATHROOM

2213mm x 2000mm - 7'3" x 6'6"

BEDROOM 1

4768mm x 3360mm - 15'7" x 11'0"

BEDROOM 2

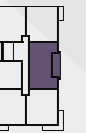
4768mm x 2650mm - 15'7" x 8'8"

PLOTS

FLOOR	PLOT
GF	294
GF	295
1F	299
1F	300
2F	305
2F	306
3F	311
3F	312

Please note that all dimensions shown are for guidance only and maximum measurements are shown where necessary. Plans should not be used for furniture or other fittings. Furniture shown is for illustrative purposes only and not included. Individual units may vary according to location - please consult your sales advisor for more details

Willow



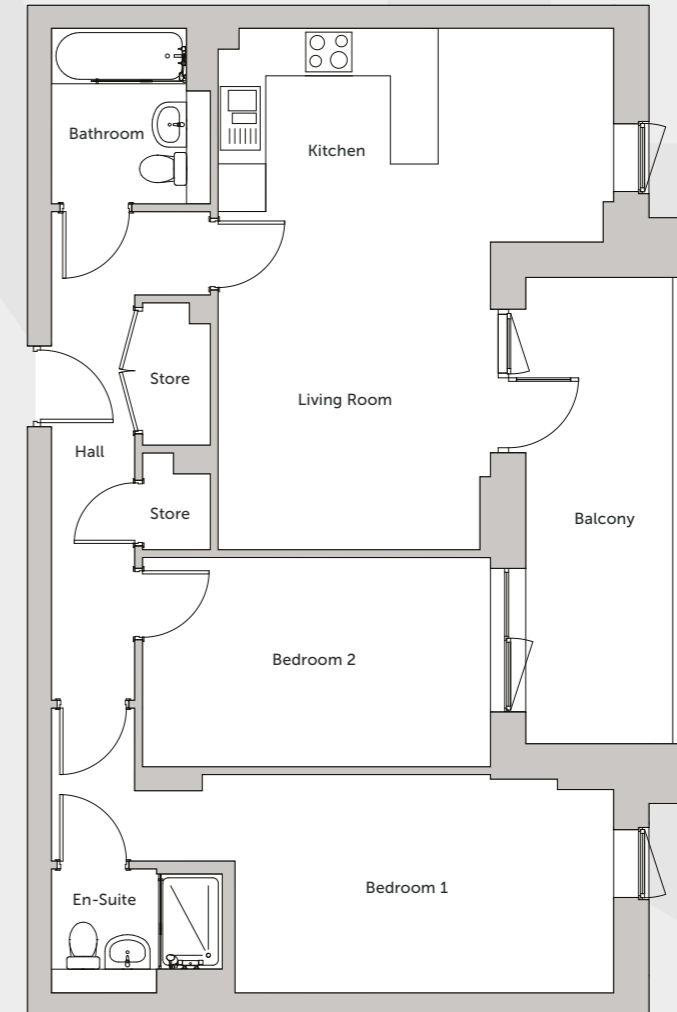
75.2 sqm / 809 sqft



2 Bedrooms



2 Bathroom



DIMENSIONS

KITCHEN

2768mm x 2308mm - 9'1" x 7'7"

LIVING ROOM

4255mm x 3405mm - 13'11" x 11'2"

BATHROOM

2213mm x 2000mm - 7'3" x 6'6"

BEDROOM 1

4765mm x 2749mm - 15'7" x 9'0"

BEDROOM 2

4378mm x 2635mm - 14'4" x 8'7"

PLOTS

FLOOR	PLOTS
1F	301
2F	307
3F	313

Please note that all dimensions shown are for guidance only and maximum measurements are shown where necessary. Plans should not be used for furniture or other fittings. Furniture shown is for illustrative purposes only and not included. Individual units may vary according to location - please consult your sales advisor for more details



Specification

All our homes at Cable Wharf include generous specifications to make life as comfortable and convenient as can be.

KITCHEN

- Contemporary Symphony grey kitchen units with pearl grey granite effect worktops
- Integrated fridge/freezer and dishwasher
- Integrated electric oven and hob
- Stainless steel splash back & canopy extractor fan
- Stainless steel sink and drainer

BATHROOM

- Contemporary white bathroom suite with chrome fittings
- White gloss tiles
- Stone effect light grey vinyl flooring
- Shower over bath with glass screen
- Pedestal washbasin with mixer tap
- Chrome heated towel radiator

INTERIOR & DECORATION

- Textured, light wood effect vinyl floorings to kitchen & hallways
- White emulsion to walls and ceilings and white satin to woodwork
- Durable neutral carpets to all bedrooms and living area
- High efficiency combi boiler
- Automatic room thermostat control
- TV / broadband connection points
- Built in storage solutions

EXTERIOR

- Allocated parking
- Riverfront development

WARRANTY

- All Love Living Homes are backed by a full 10-year NHBC warranty to provide peace of mind, and help you relax knowing that there's help if you need it!



Artistic impression. Elevation treatments are subject to change.

Reserving your chosen plot

There's nothing more exciting than taking that first step onto the home ownership ladder. With generous specifications, make life comfortable and convenient in the beautiful Gravesham area. Love your new home at Cable Wharf with Love Living Homes.

Viewings to the show home are by appointment only. To book yours or find out more information, please contact us:

 buy@lovelivinghomes.co.uk
07340 361424

Monson House, Monson Way,
Tunbridge Wells, Kent TN1 1LQ
lovelivinghomes.co.uk

