

# ST. PETER'S ROAD, WEST LYNN

Housetype 3B5P Semi

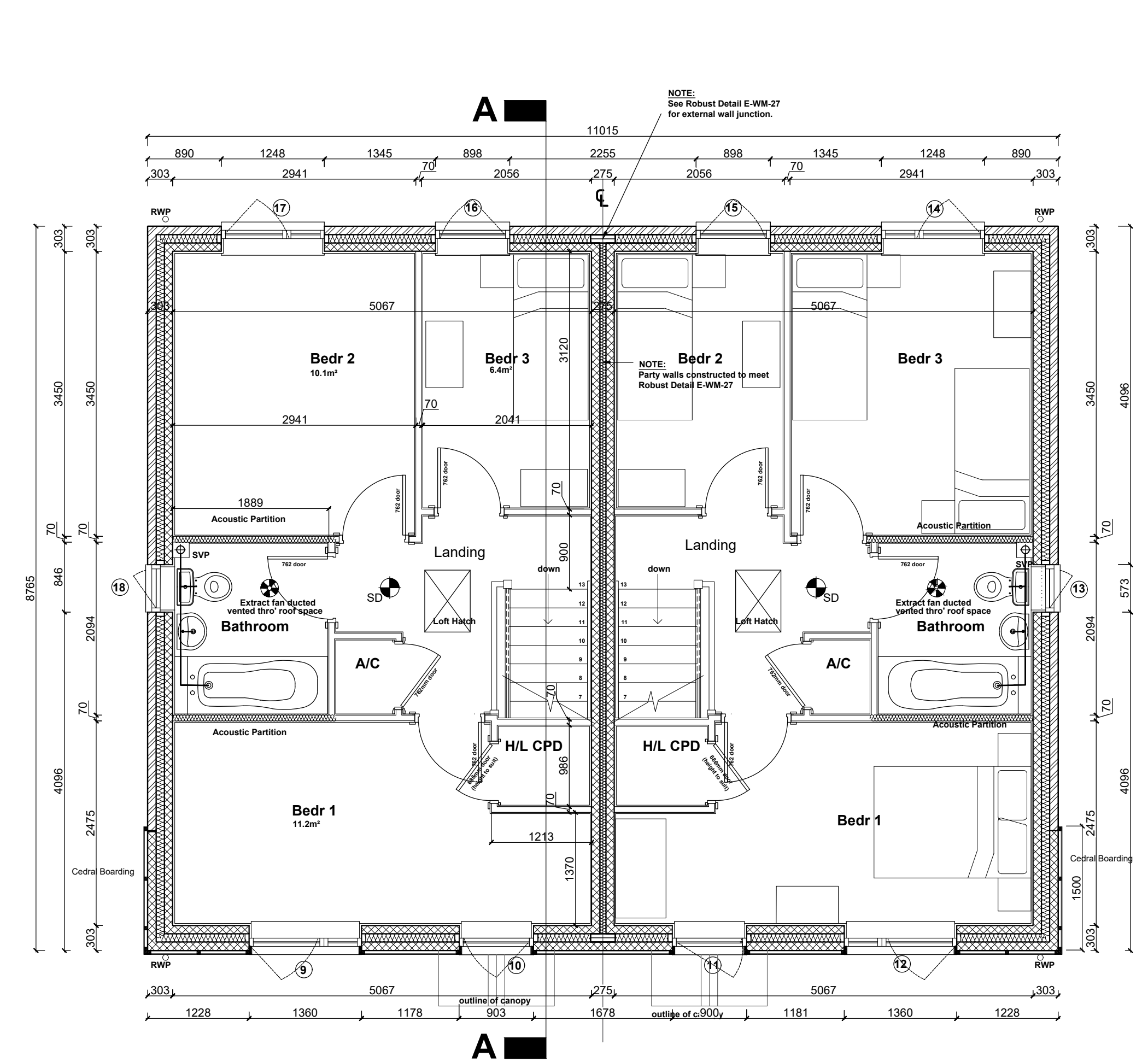
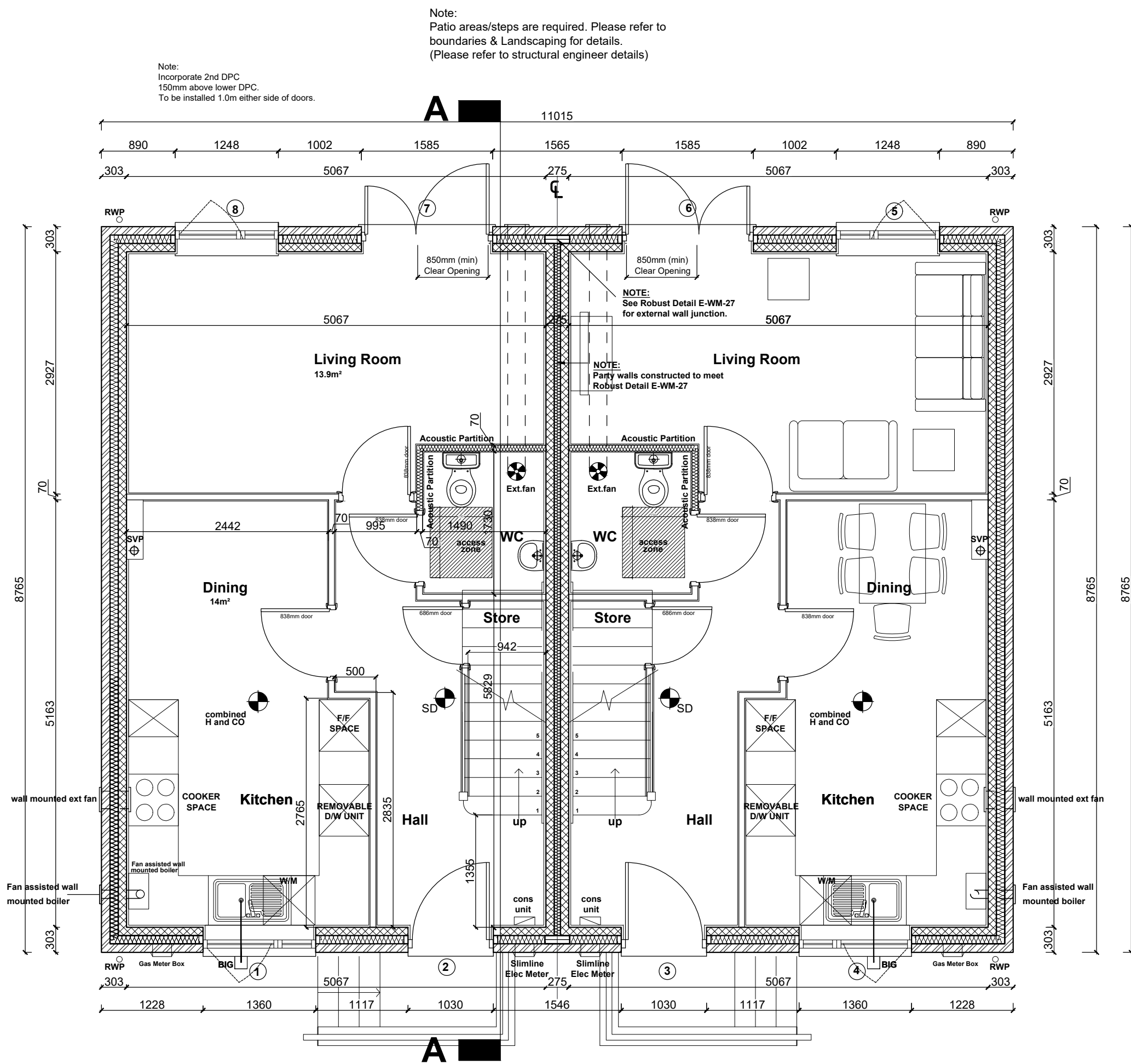
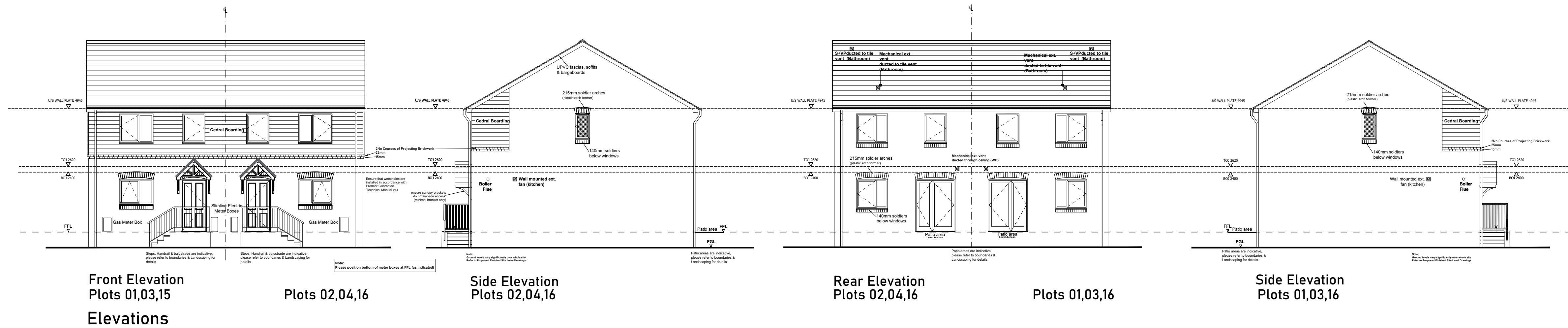
GIA: 82.7m<sup>2</sup>

6 no. TypeCC Plots

LOTS 01-02, 03-04, 15-16

[Affordable Rent & S/O - See Accommodation Schedule]

**NOTES:**  
 The details depicted on this drawing are the copyright of Seagate Homes and may not be reproduced without permission. This drawing must not be re-issued, loaned or copied without the consent. Errors omissions and discrepancies should be reported to the originator immediately.  
 All dimensions to be checked on site prior to construction or off-site fabrication by the Contractor, his Sub-contractor or Supplier.  
 Do not scale plans - use figure or grid dimensions where given.  
 Any deviation from the drawing is to be reported to the originator immediately.  
 IF IN DOUBT ASK!



**Type CC - Structural Opening Schedule**

Ref	Description	Size (width x height)	Notes
1	Window	1360mm x 1050mm	Top Hung
2	Entrance Door	1030mm x 2100mm	
3	Entrance Door	1030mm x 2100mm	
4	Window	1360mm x 1050mm	Top Hung
5	Window	1248mm x 1200mm	
6	French Doors	1585mm x 2100mm	Safety Glazing
7	French Doors	1585mm x 2100mm	Safety Glazing
8	Window	1248mm x 1200mm	
9	Window	1360mm x 1200mm	Escape Window
10	Window	900mm x 1200mm	Escape Window
11	Window	900mm x 1200mm	Escape Window
12	Window	1360mm x 1200mm	Escape Window
13	Window	573mm x 1050mm	Obscured Glass
14	Window	1248mm x 1200mm	Escape Window
15	Window	900mm x 1200mm	Escape Window
16	Window	900mm x 1200mm	Escape Window
17	Window	1248mm x 1200mm	Escape Window
18	Window	573mm x 1050mm	Obscured Glass

All windows and doors to be PVCu in White  
 Front Entrance Doors to be Composite in RAL7016  
 Extended cills required to boarded areas (windows)  
 Escape windows to have minimum opening size of 450mm in each direction and a minimum area of 0.33 sq.m in accordance with Part B of Building Regulations

Rev	Notes	Date	By
E	Drainage point locations and eaves sizes updated. WC access zone added to layout.	20.09.23	FB
D	Movement points omitted. Some opening sizes updated on schedule/elevations. Notes added	15.05.23	MD
C	Wall mounted fans indicated where possible. Plan & notes updated	22.02.23	MD
B	Patio areas omitted from plan and replaced with notes referring to external works	14.02.23	AC
A	Drawings updated for construction	13.12.22	AC



Project: PROPOSED RESIDENTIAL DEVELOPMENT, ST. PETER'S ROAD, WEST LYNN

Drawing: Housetype CC - Floor Plans and Elevations

Drawn: LNA Date: OCT 2022

Status: CONSTRUCTION Scale: 1:100 & 1:50 @A1

Drawing Number: WL-SH-WD-CC-FPEL-AR-2008-E