

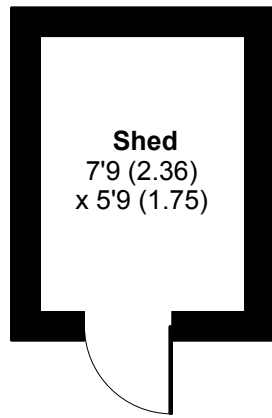
# Barnes Close, Stalbridge, Sturminster Newton, DT10

Approximate Area = 906 sq ft / 84.1 sq m

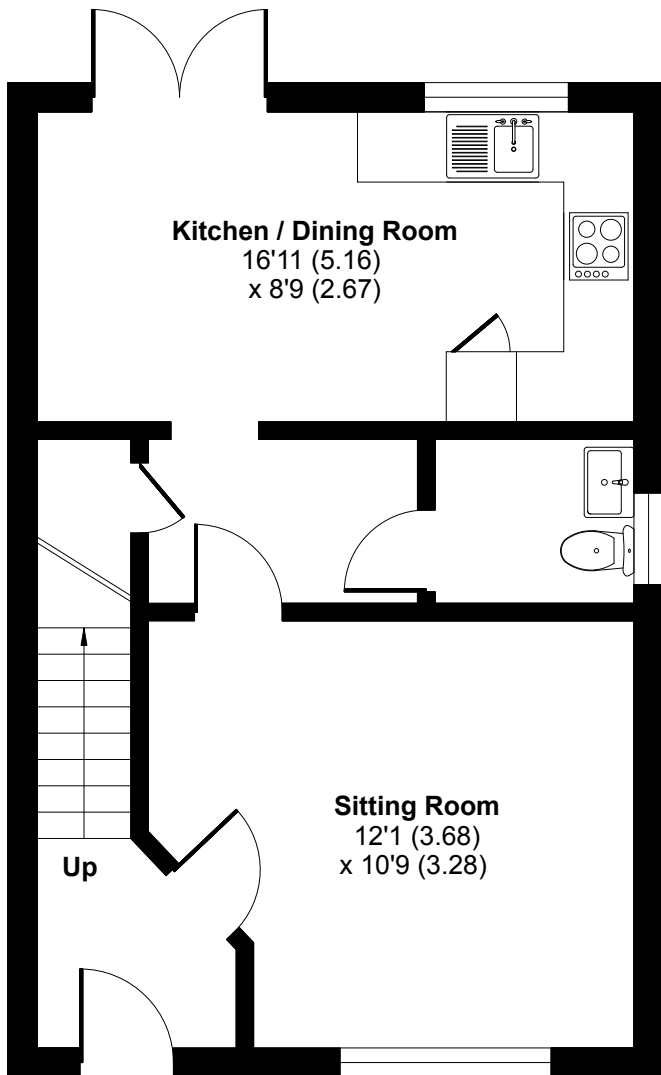
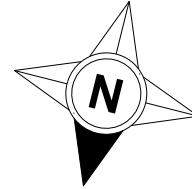
Outbuilding = 46 sq ft / 4.2 sq m

Total = 952 sq ft / 88.3 sq m

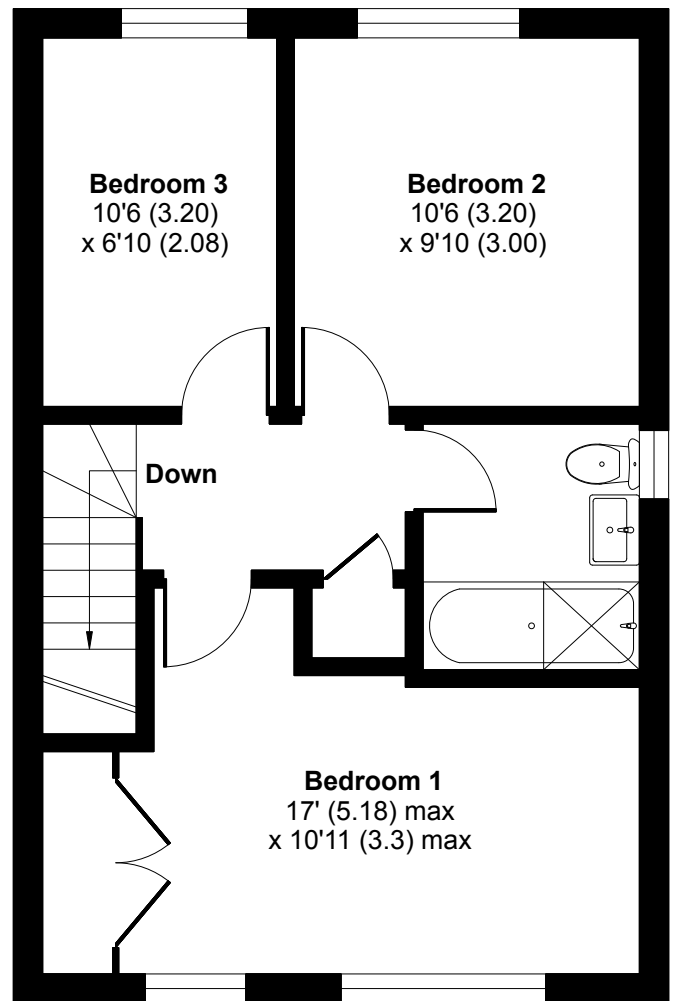
For identification only - Not to scale



**OUTBUILDING**



**GROUND FLOOR**



**FIRST FLOOR**