

# The Newton

## Orbit Homes at Priors Hall Park

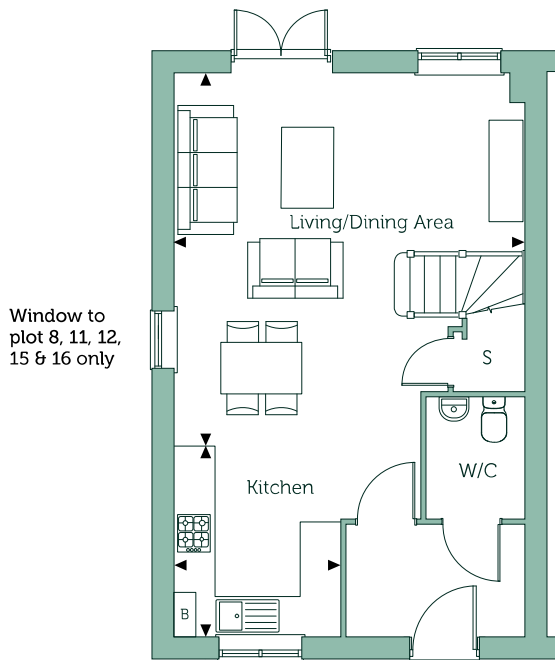
Three Bedroom Home

Plots 5, 6, 7, 8, 11, 12, 15 & 16



# The Newton

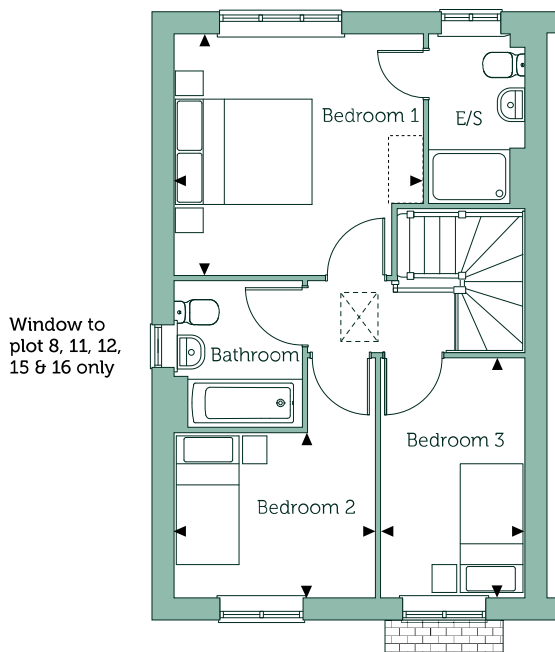
Orbit Homes at Priors Hall Park



## Ground Floor

**Kitchen**  
8'2" x 10'2" 2.50m x 3.11m

**Living/Dining Area**  
16'11" x 17'4" 5.15m x 5.28m



## First Floor

**Bedroom 1**  
12'3" x 11'10" 3.73m x 3.61m

**Bedroom 2**  
9'11" x 8'2" 3.01m x 2.48m

**Bedroom 3**  
7'1" x 11'9" 2.17m x 3.58m

**Gross internal area**  
932 sq ft 86.6 sq m

### Key

B Boiler S Store Cupboard

Floorplans are not drawn to scale. Measurements are taken from areas marked with an arrow. They are maximum approximate dimensions and given as a guide only. These should not be used as a basis for purchasing flooring or furniture. Orbit reserve the right to alter plans, specifications, position of doors and windows and change tenure subject to demand without prior notice. External elevations vary from plot to plot. Please ask your Sales Consultant for current information when reserving your new home. Information correct at time of going to print. Computer generated image overleaf.