



# Persona Homes

by Home Group

## LONGRIDGE FARM

Bedlington

### Calderton

*Looking for a family home that you can grow into? Look no further,  
the Calderton is the home for you.*

Spread across three floors, the Calderton is thoughtfully designed with spacious living areas downstairs and generous bedrooms upstairs. With a main bedroom suite on the top floor, we can see why this home has proven to be popular!



#### Contact us:

T: 0800 030 8888

E: [contactus@yourpersonahome.com](mailto:contactus@yourpersonahome.com)

W: [yourpersonahome.com](http://yourpersonahome.com)

Choppington Road, Bedlington, NE22 6LA



## Ground floor

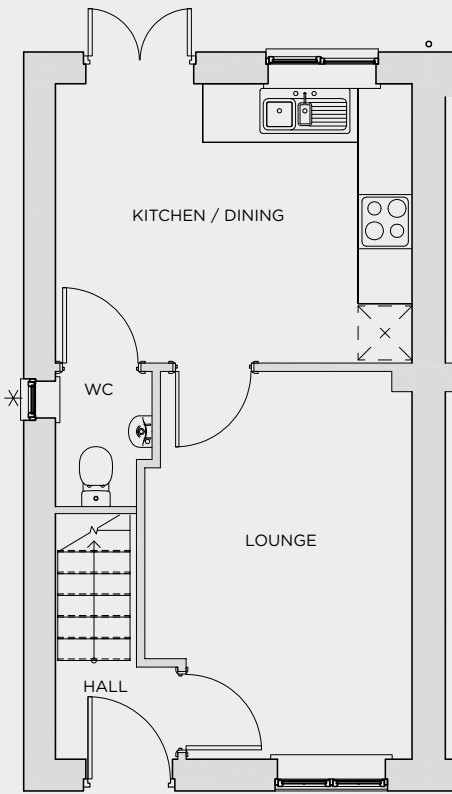
Lounge	2.96m × 4.3m
Kitchen/Dining	3.96m × 3.11m

## First floor

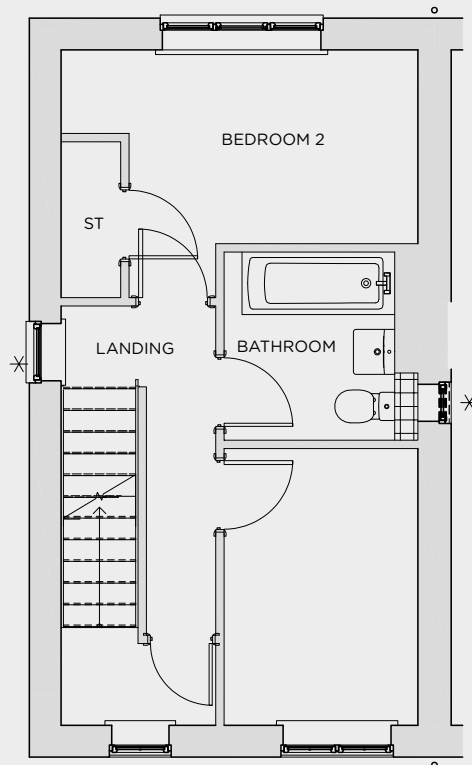
Bedroom 2	3.96m × 2.76m
Bedroom 3	1.95m × 2.52m
Bathroom	1.7m × 2.03m

## Second floor

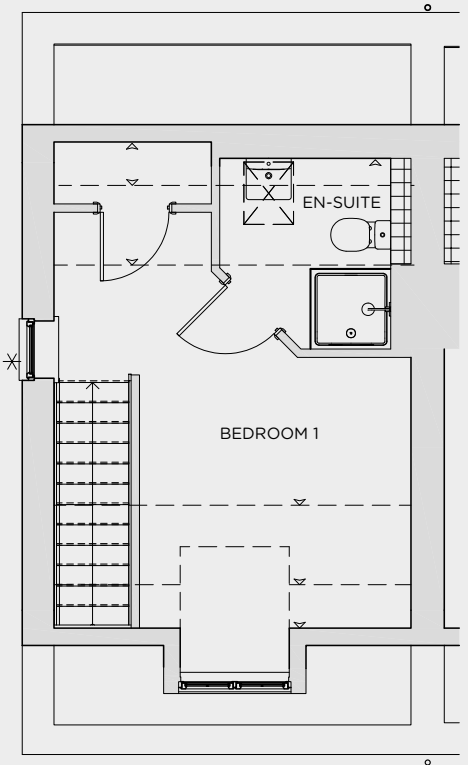
Main bedroom	3.01m × 2.52m
En-suite	1.89m × 1.81m
<b>Total Area</b>	<b>78.22m<sup>2</sup></b>



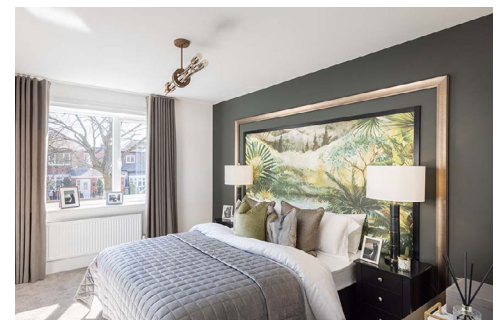
Ground floor



First floor



Second floor



Any floor plans are a general outline of the layout of the property for guidance only. All measurements are approximate and may vary and any intending purchasers should not rely on them as statements of fact or representations of fact but must satisfy themselves by inspection or otherwise as to their accuracy. Dimensions shown are not intended to be relied upon for installation of appliances or items of furniture or otherwise. CGI's and images are for illustrative purposes only. Specifications are subject to change. Images are indicative only and may be of previous developments.\*Journey times and distances taken from google.com/ maps and are correct before going to print. All times and distances listed are approximate and may vary depending on time of travel.