



## 19 Roman Fields

Chilton, OX11 0UF

40% Shared Ownership £120,000

This well presented two bedroom mid terrace home located on the edge of the highly regarded Chilton Dene development, with excellent country walks on the doorstep up on to the Ridgeway.

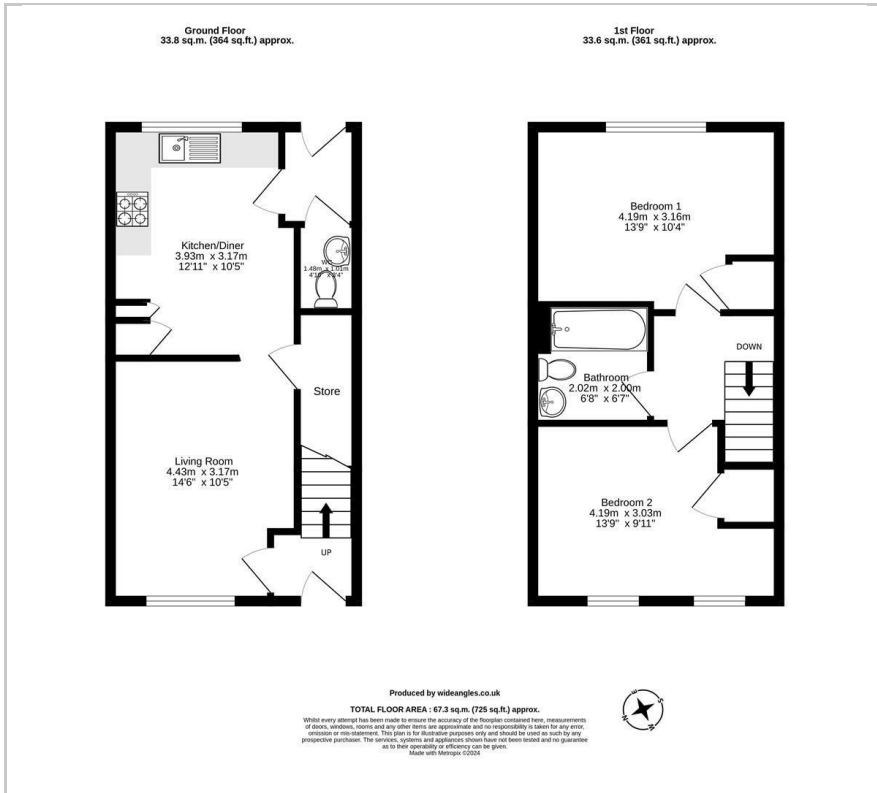
19 Roman Fields comprises of entrance hall leading through to the living room to the front of the property and kitchen/diner to the rear along with a downstairs cloakroom. Upstairs there is two double bedrooms and a family bathroom. Outside there is a fully enclosed rear garden and allocated parking.

Chilton is a charming South Oxfordshire village offering a highly rated primary school village inn and superb access to the A34 which offers excellent links to the M4 and M40. The nearby town of Didcot offers more comprehensive shopping and leisure facilities together with an excellent rail connection to London Paddington in approx. 40 minutes.

- Rent £549.29 pcm approximately
- Service charge £16.17 pcm approximately
- 2 double bedrooms
- Light & spacious sitting room
- Kitchen/diner
- Downstairs cloakroom
- Fully enclosed pretty rear garden
- Gas central heating
- Double glazed windows



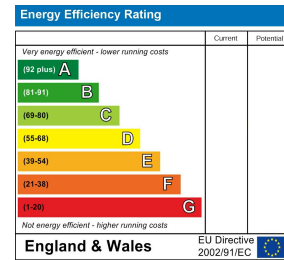
## Floor Plan



## Area Map



## Energy Efficiency Graph



These particulars, whilst believed to be accurate are set out as a general outline only for guidance and do not constitute any part of an offer or contract. Intending purchasers should not rely on them as statements of representation of fact, but must satisfy themselves by inspection or otherwise as to their accuracy. No person in this firm's employment has the authority to make or give any representation or warranty in respect of the property.