



S **resi** Bracknell
Making Home Ownership Possible



SO Resi is a new way of making home ownership possible for more people. You buy a share of your home, with a lower deposit, smaller mortgage and monthly payment on the rest.

SO Resi redefines shared ownership, by making everything clear and uncomplicated, so you understand how it all works at every stage, before and after you buy. Our SO Resi homeowners are important to us and we aim to build strong, lasting relationships by being here to answer your questions in a language that makes sense.

SO Resi by Metropolitan Thames Valley, a not-for profit housing association. For over fifty years we've been building good quality, affordable new homes and managing them well. By doing that, we've been helping to create communities where people are proud and happy to live.

Effortless town centre living

In the heart of Bracknell a new neighbourhood is emerging. Contemporary apartments rise up from lush landscaped gardens, a stone's throw from the thriving centre transformed by multi-million-pound investment. Welcome to SO Resi Bracknell.

Our collection of stylish one and two bedroom homes are perfectly positioned to embrace the best of town centre living. Moments from the train station with fast links to London Waterloo and Reading, this modern development is also a short stroll from fantastic shopping, delicious dining and leafy green spaces.

Each affordable, shared ownership apartment boasts a private balcony or terrace, while thoughtful design maximises space and light – offering sleek interiors tailored to modern living.

A collection of 1 & 2 bed apartments

The area	4
Development overview	10
Connectivity	12
Specification	14
Plans	18





Excellent staff, friendly & helpful. Great food choices & wonderful atmosphere.



Mason & Rye
Trip Advisor

An exciting time to be in Bracknell

Reaping the rewards of regeneration, Bracknell is fast becoming a property hot spot – and it’s easy to see why.

In an ideal location just 30 miles from London, the town has undergone substantial transformation and boasts smart shopping, an eclectic mix of cafes, bars and restaurants, wide ranging leisure facilities and a choice of high performing schools.

Head to The Lexicon for an indoor/outdoor shopping experience with all the big names in fashion featuring more than 100 brands; enjoy lunch al fresco or an indulgent dinner at a variety of vibrant restaurants serving world-cuisine; find a film to suit everyone in the family at the 12-screen Cineworld; or make a splash at Coral Reef Waterworld with its giant pirate ship and exhilarating waterslides.

It’s obvious that Bracknell has plenty to keep you busy – yet if you fancy a change of scene it’s simple to reach the bright lights of London, and you’re never far from the glorious Berkshire countryside when you need to reconnect with nature.



There are plentiful restaurants a short walk from SO Resi Bracknell, or for some fine dining why not opt for a table at The Cricketers, only a 7 minute drive* away.

*Travel times by Google maps.



Windsor Great Park



1



2



3



4



5



6

SO Resi Bracknell | The area

Explore your new neighbourhood

1

South Hill Park Arts Centre

Connect with the creative arts at South Hill Park – an 18th century manor housing two theatres, a cinema, art studios, gallery spaces and a restaurant. With over 300 shows, events and exhibitions to see each year, plus a host of visual and performing arts courses to enrol on, it's easy to immerse yourself in culture.

 12 minutes

2

Blues Smokehouse

They ask you to arrive hungry at Blues Smokehouse, and it's easy to see why – the menu is piled high with American smokehouse favourites, southern specials and burgers galore. BBQ classics are smoked in-house and served in a relaxed, fun and informal atmosphere – perfect for getting a crowd together.

 4 minutes

3

The Lexicon

Whether you want to shop-till-you-drop, dine-out on a date, sip cocktails with friends or catch a film with the family, The Lexicon has it all. More than 100 stores offer top fashion, beauty, homeware and technology brands, while over 30 restaurants, bars and cafes provide plenty of places to eat, drink and relax.

 6 minutes

4

Swinley Forest

Managed by The Crown Estate, Swinley Forest's 3,000 acres of ancient evergreens provides the perfect backdrop to enjoy the great outdoors – whether you prefer the thrill of exhilarating high ropes, want to explore the many mountain bike trails, or would rather unwind on a woodland walk.

 7 minutes

5

Coffee Barker Vino & Cocktails

Inspired by the coffee houses of New York and the bistros of Paris, this welcoming venue not only offers an extensive range of loose-leaf teas and organic coffee, but also boasts a collection of 50 gins and an enticing cocktail list. Open for breakfast, lunch and dinner, with menus focused on simple, fresh produce.

 8 minutes

6

Puzzalogical Escape Rooms

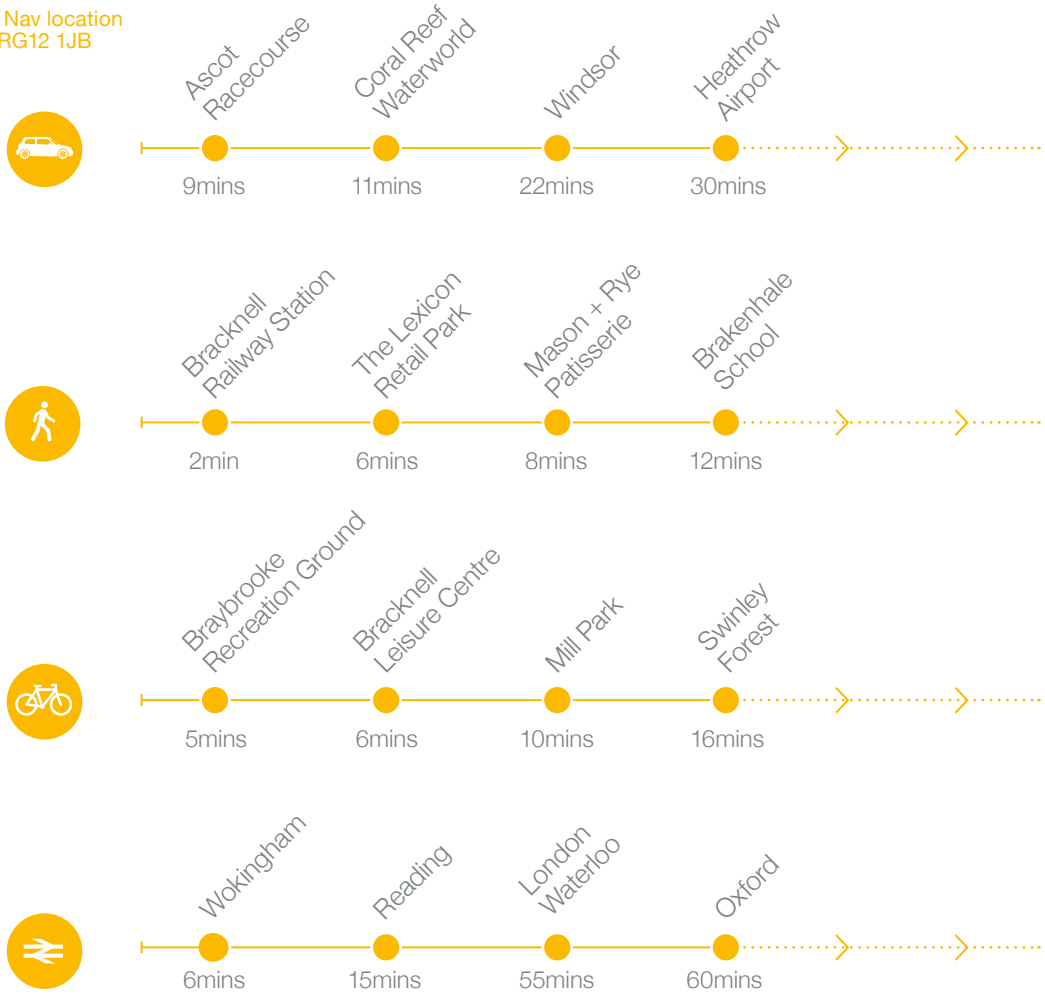
If you're brave enough to be locked up with your friends, family or colleagues for 60 minutes, Puzzalogical guarantees an immersive adventure from the moment you enter. The only way out is by discovering clues and solving puzzles, so you'll need to collaborate, communicate and cooperate with your team.

 11 minutes

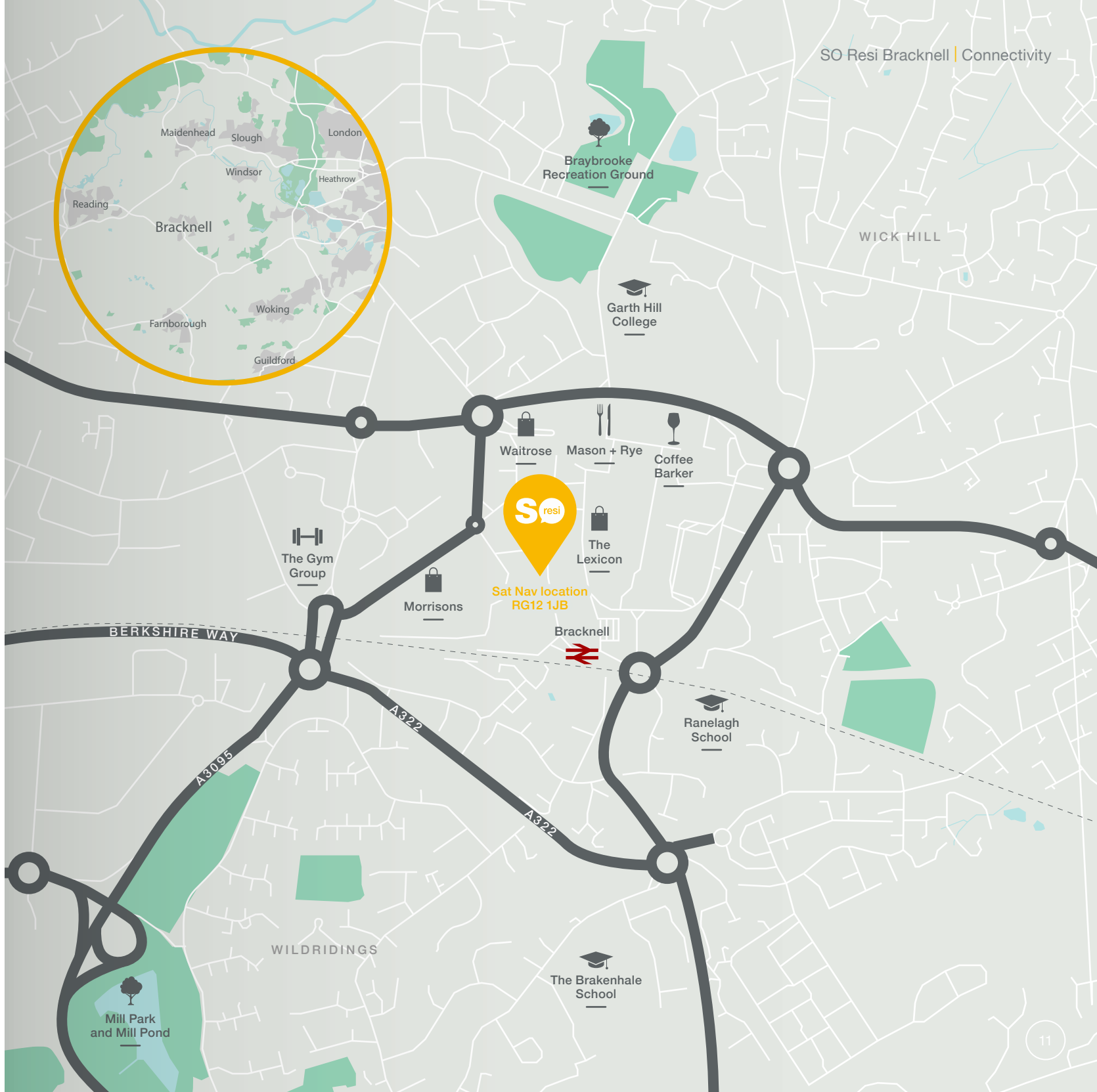
Transport made easy

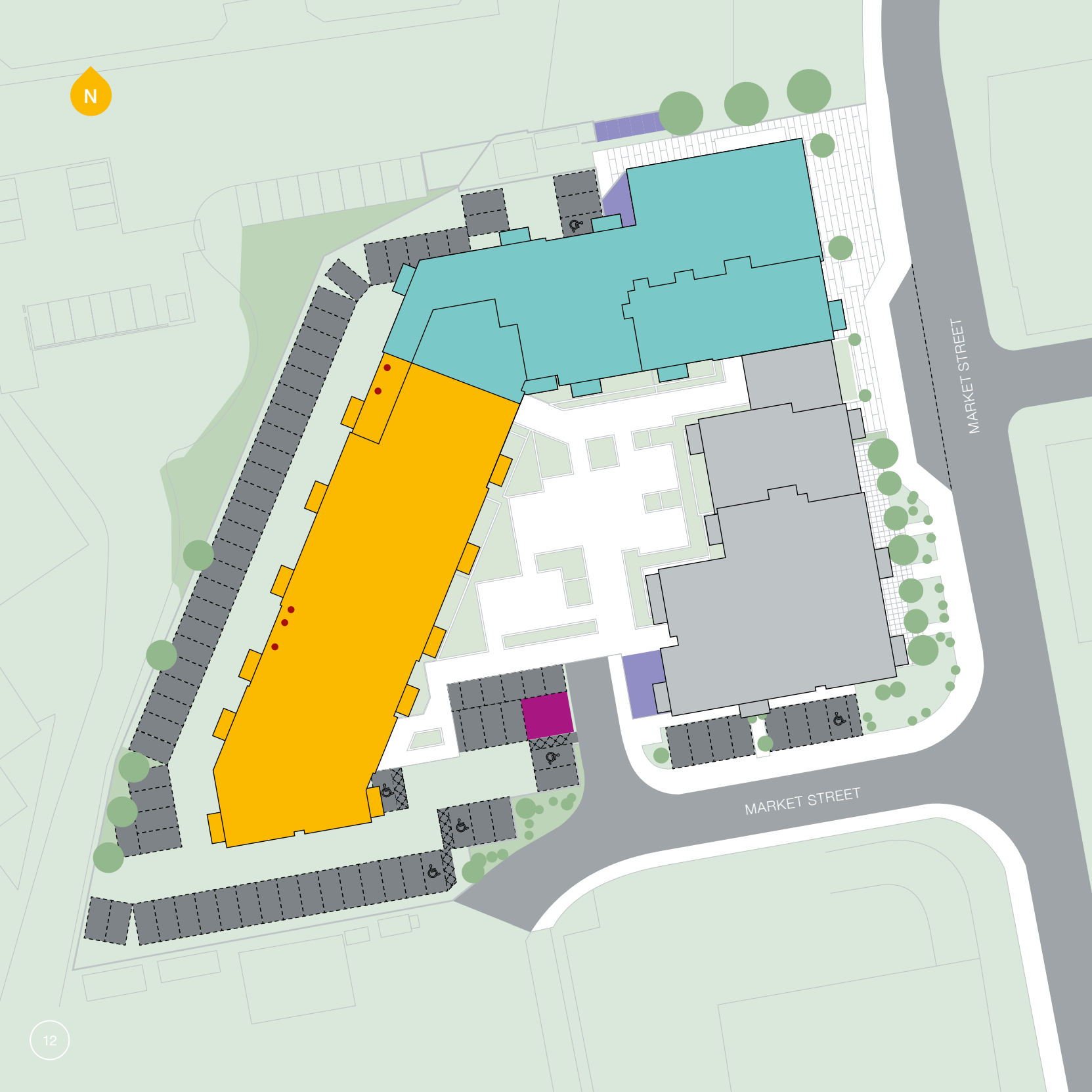
When getting from A to B, Bracknell offers quick and convenient connections. With two train stations – Bracknell and Martin’s Heron – providing fast trains for commuting, you can be in London Waterloo in an hour or travel to Reading in as little as 15 minutes. Bracknell is also perfectly placed for drivers with easy access to both the M4 and M3 motorways, and the town has a wide-reaching bus service and a network of cycle routes.

Sat Nav location
RG12 1JB



Times taken from Google Maps. Train times taken from Bracknell Station.





Be part of the next chapter



Sat Nav location
RG12 1JB

Perfectly positioned to embrace the best of town centre living, SO Resi Bracknell forms part of the wider Amber House development – a landmark scheme encompassed in the £240 million regeneration currently transforming the town.

Bringing the neighbourhood to life, this mixed-use scheme offers 126 shared ownership and 67 affordable rent homes set across the development, as well as commercial space.

Whether you choose a one or two bedroom apartment, these contemporary and comfortable homes each offer private outside space; while a beautifully landscaped central courtyard, softened by lush planting, provides a shared area for relaxation or meeting friends.

Designed to maximise light and space, each apartment is built to a high specification and with sustainability in mind – with every home offering secure cycle storage, and designated parking.

Key

- SO Resi shared ownership
- Social rent first floor only
- Social rent
- Cycle store
- Bin store
- Parking*
- Window cleaning points

The site layout is intended for illustrative purposes only and is subject to change. *Situated under development.



Styled for
your lifestyle

Come home to comfort

Every home here offers carefully considered living areas – designed for convenient, contemporary living.

Sleek kitchens include integrated Zanussi appliances for a streamlined look, while luxe bathrooms boast rainfall showers, inset basins and heated towel rails. The fresh, neutral décor enables you to simply unpack and enjoy your new home, or tailor it to your taste in time.

General

- Zanussi A rated washer/ dryer
- Pennine Twist Birch carpet
- Programmable thermostat
- Smoke, heat and optical alarm
- Karndeane lime washed oak floor finishes
- White vinyl matt emulsion wall and ceilings
- Venetian blinds
- LED dimmable downlights
- Bringme digital concierge parcel box

Bathroom

- Hansgrohe Ecostat Universal bath shower mixer
- Franke 1.5 bowl stainless steel sink
- Under unit LED strip light
- Toughened safety glass bath screen to bath/shower
- Ideal standard Idealrain cube fixed head rainshower
- Heated towel radiators

Kitchen

- Zanussi glass cooker hood – re-circulating air fan
- Zanussi fitted oven & ceramic hob
- Integrated Zanussi fridge freezer
- Integrated Zanussi dishwasher
- Under sink built-in refuse bins
- Stainless steel splash back behind hob

Penthouses

- Instant boiling water kitchen sink tap
- Magnet Minerva worktops in kitchen
- Bosch extractor fan, hob, oven, fridge freezer, dishwasher and microwave
- Karndeane grey limed oak floor finishes
- Carbon natural effect bathroom tiles
- HG Logis 70 Basin Mixer
- Wine cooler



These are computer generated images and are for illustrative purposes only.



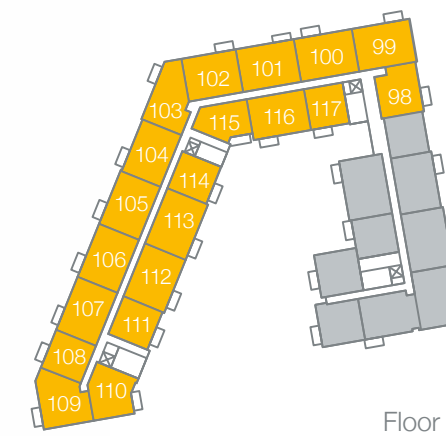
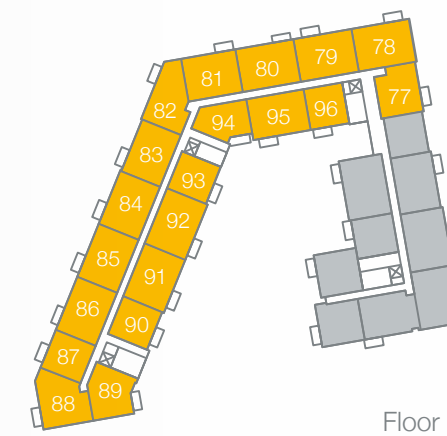
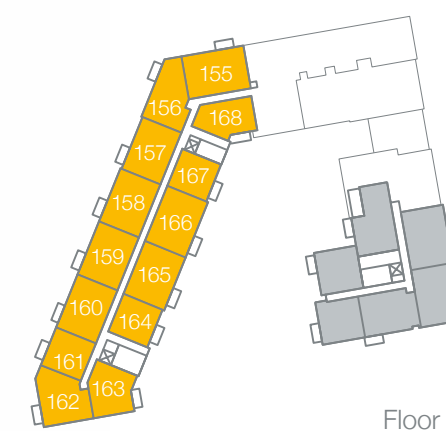
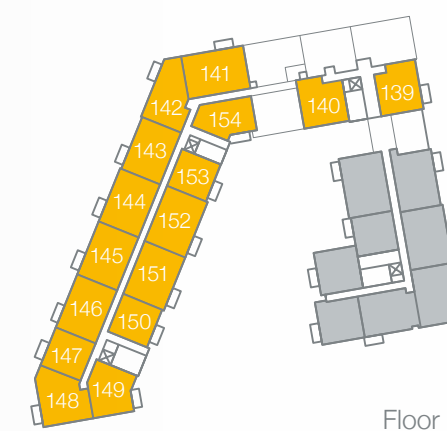
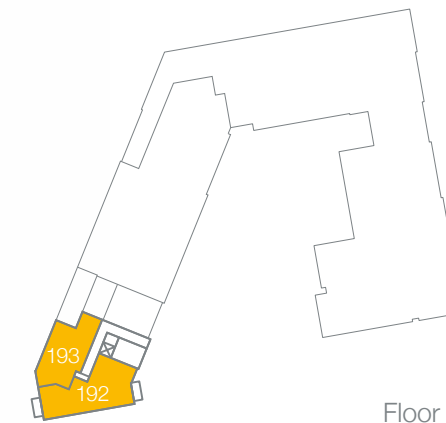
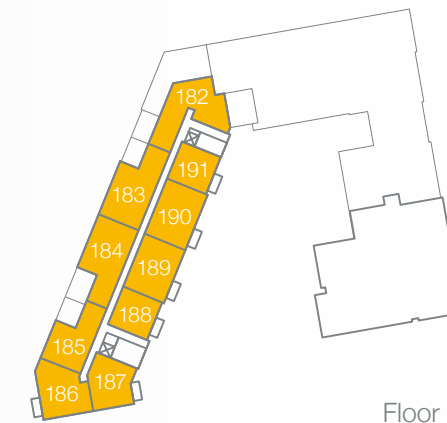
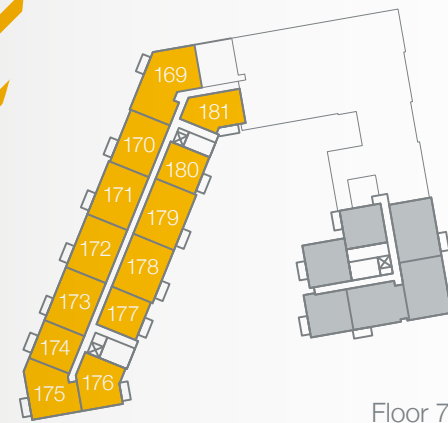
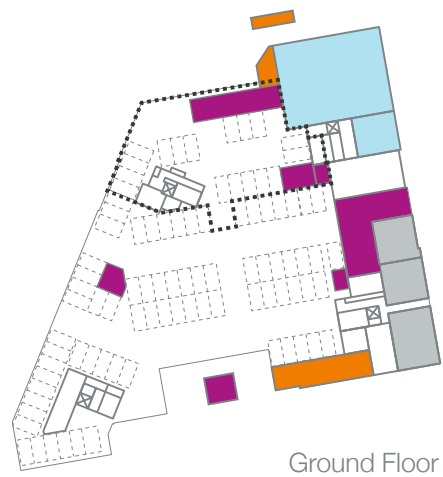
Planned from the ground up

Based in the heart of Bracknell, with a short walk to the train station, the development is in the perfect position to call home.

With homes based over nine floors, SO Resi Bracknell residents will enjoy life in this striking building. The development will benefit from a first floor courtyard garden and a large range of local amenities all a short walk from their doorstep.

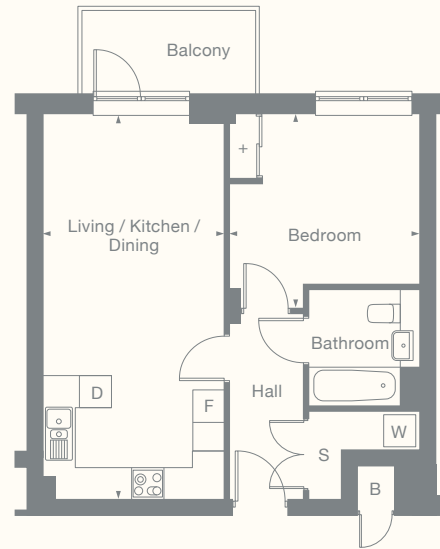
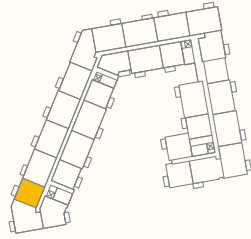
Key

- SO Resi units
- Social rent
- Balcony/terrace
- Communal podium deck
- Commercial space
- Mezzanine
- Parking
- Cycle store
- Bin store
- MTVH office
- X
 Lift



Type 1A

1 Bedroom Apartment



Plots	Floor
66	1
87	2
108	3
129	4
147	5
161	6
174	7

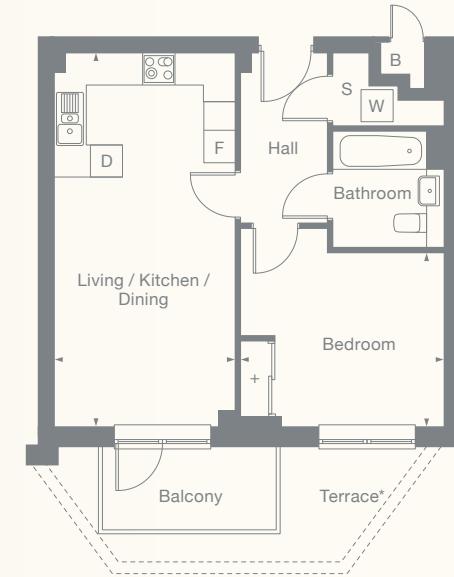
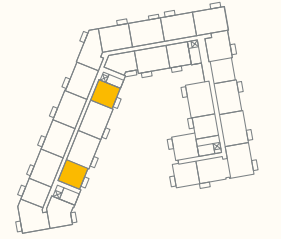
Room	Metric	Imperial
Living / Dining / Kitchen	3.3m x 7.2m	10'8" x 23'6"
Bedroom	3.5m x 3.6m	11'4" x 11'8"
GIA	49.6 m ²	534ft ²

- S Storage
- F Fridge freezer
- D Dishwasher
- W Washer dryer
- + Wardrobe
- B Boiler

All floor plans in this brochure are for general guidance only. All room dimensions are subject to a plus/minus 5% tolerance. Measures are from plans and "as built" dimensions may vary. Any dimensions shown are not intended to be used for carpet sizes, appliances, spaces or items of furniture. These particulars do not constitute any part of an offer or contract. Boiler area not included in GIA. Boiler area 0.5m².

Type 1B

1 Bedroom Apartment

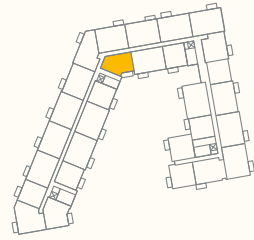


Plots	Floor
69* 72*	1
90 93	2
111 114	3
132 135	4
150 153	5
164 167	6
177 180	7
188 191	8

Room	Metric	Imperial
Living / Dining / Kitchen	3.3m x 6.9m	10'8" x 22'6"
Bedroom	3.7m x 3.2m	12'1" x 10'4"
GIA	49.9 m ²	537ft ²

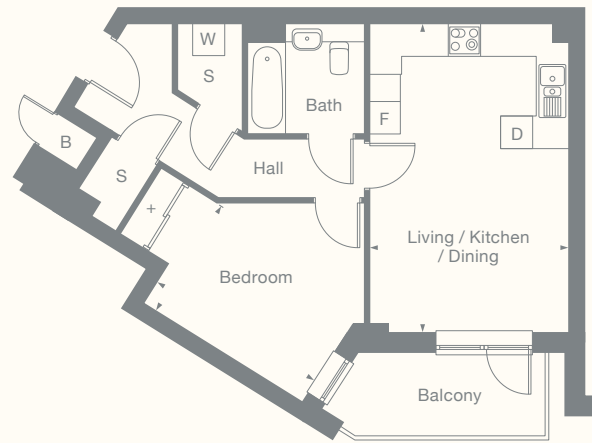
- S Storage
- F Fridge freezer
- D Dishwasher
- W Washer dryer
- + Wardrobe
- B Boiler

*Plots 69 and 72 have a roof terrace, all other plots have balconies. Boiler area not included in GIA. Boiler area 0.45m².



Type 1C

1 Bedroom Apartment



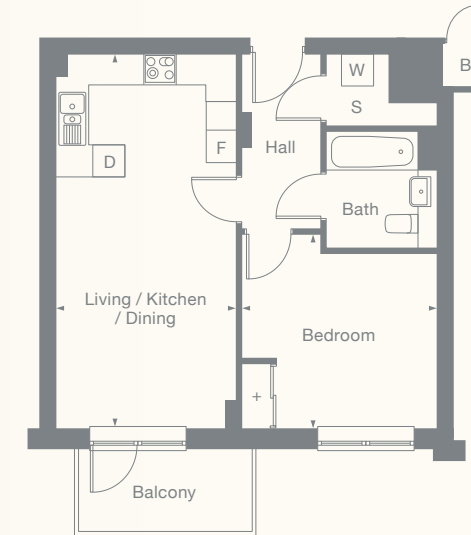
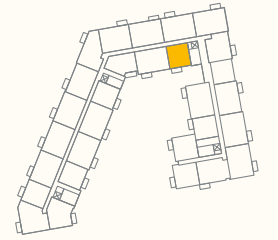
Plots	Floor	Room	Metric	Imperial
94	2	Living / Dining / Kitchen	3.7m x 5.7m	12'1" x 18'7"
115	3	Bedroom	3.5m x 2.2m	11'4" x 7'2"
136	4	GIA	50.7 m ²	546ft ²

- S Storage
- F Fridge freezer
- D Dishwasher
- W Washer dryer
- + Wardrobe
- B Boiler

All floor plans in this brochure are for general guidance only. All room dimensions are subject to a plus/minus 5% tolerance. Measures are from plans and "as built" dimensions may vary. Any dimensions shown are not intended to be used for carpet sizes, appliances, spaces or items of furniture. These particulars do not constitute any part of an offer or contract. Boiler area not included in GIA. Boiler area 0.45m².

Type 1D

1 Bedroom Apartment



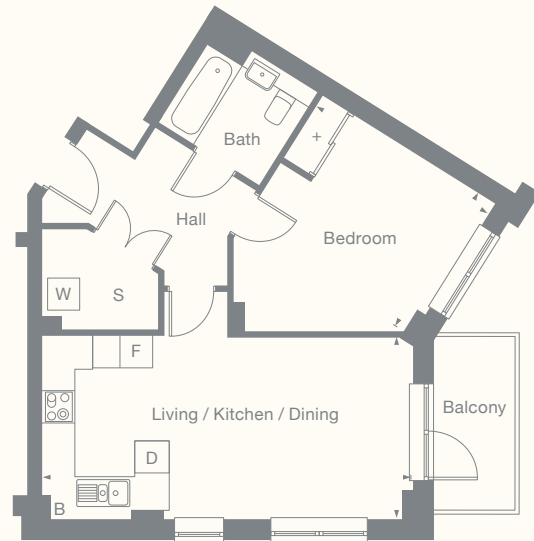
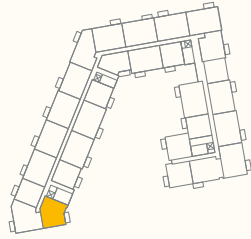
Plots	Floor	Room	Metric	Imperial
96	2	Living / Dining / Kitchen	3.3m x 7.0m	10'8" x 22'9"
117	3	Bedroom	3.6m x 3.6m	11'8" x 11'8"
138	4	GIA	49.3 m ²	531ft ²

- S Storage
- F Fridge freezer
- D Dishwasher
- W Washer dryer
- + Wardrobe
- B Boiler

Boiler area not included in GIA. Boiler area 0.7m².

Type 1I

1 Bedroom Apartment



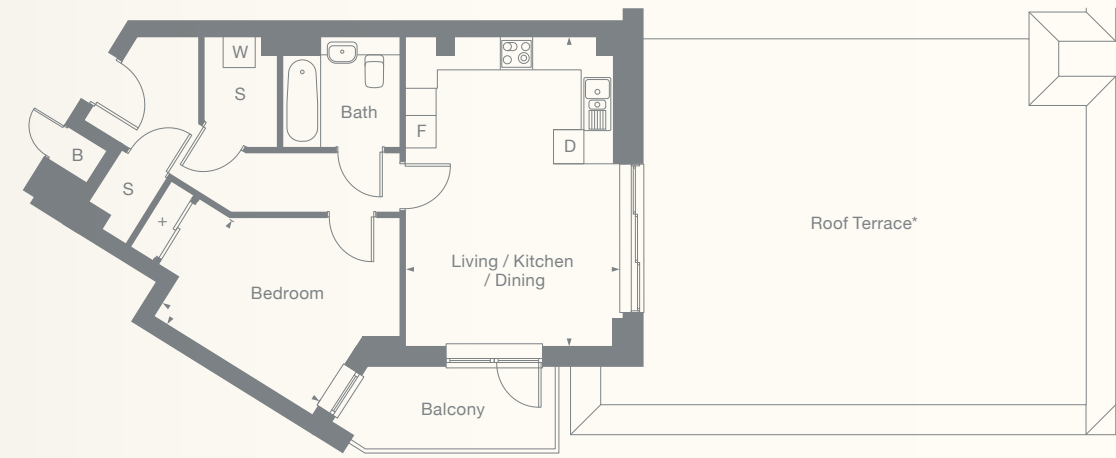
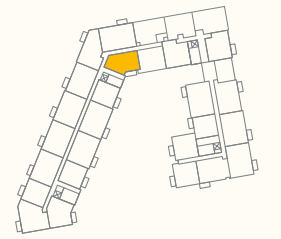
Plots	Floor	Room	Metric	Imperial
68	1	Living / Dining / Kitchen	6.9m x 3.4m	22'7" x 11'1"
89	2	Bedroom	3.8m x 2.9m	12'4" x 9'5"
110	3	GIA	55.94 m ²	602ft ²
131	4			
149	5			
163	6			
176	7			
187	8			

- S Storage
- F Fridge freezer
- D Dishwasher
- W Washer dryer
- + Wardrobe
- B Boiler

All floor plans in this brochure are for general guidance only. All room dimensions are subject to a plus/minus 5% tolerance. Measures are from plans and "as built" dimensions may vary. Any dimensions shown are not intended to be used for carpet sizes, appliances, spaces or items of furniture. These particulars do not constitute any part of an offer or contract.

Type 1J

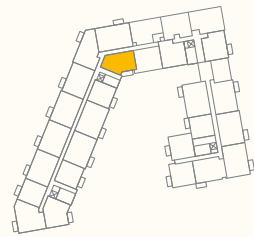
1 Bedroom Apartment



Plots	Floor	Room	Metric	Imperial
154	5	Living / Dining / Kitchen	4.0m x 5.7m	13'1" x 18'7"
		Bedroom	2.2m x 3.4m	7'2" x 11'1"
		GIA	55.3 m ²	595ft ²

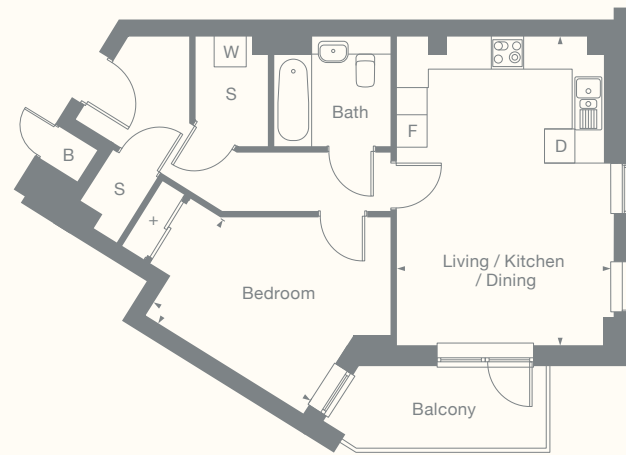
- S Storage
- F Fridge freezer
- D Dishwasher
- W Washer dryer
- + Wardrobe
- B Boiler

*This plot has a 220mm step out onto the terrace. Boiler area not included in GIA. Boiler area 0.5m²



Type 1JB

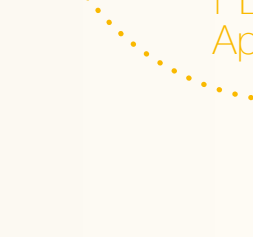
1 Bedroom Apartment



Plots	Floor	Room	Metric	Imperial
168	6	Living / Dining / Kitchen	4.0m x 5.7m	13'1" x 18'7"
		Bedroom	2.2m x 3.4m	7'2" x 11'1"
		GIA	55.3 m ²	595ft ²

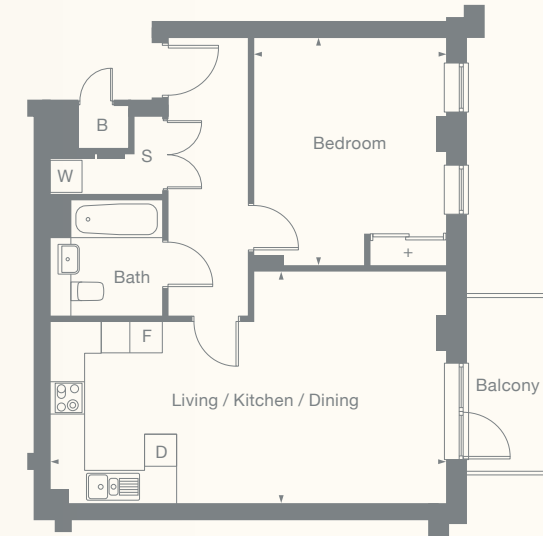
- S Storage
- F Fridge freezer
- D Dishwasher
- W Washer dryer
- + Wardrobe
- B Boiler

All floor plans in this brochure are for general guidance only. All room dimensions are subject to a plus/minus 5% tolerance. Measures are from plans and "as built" dimensions may vary. Any dimensions shown are not intended to be used for carpet sizes, appliances, spaces or items of furniture. These particulars do not constitute any part of an offer or contract. Boiler area not included in GIA. Boiler area 0.5m².



Type 1M

1 Bedroom Apartment



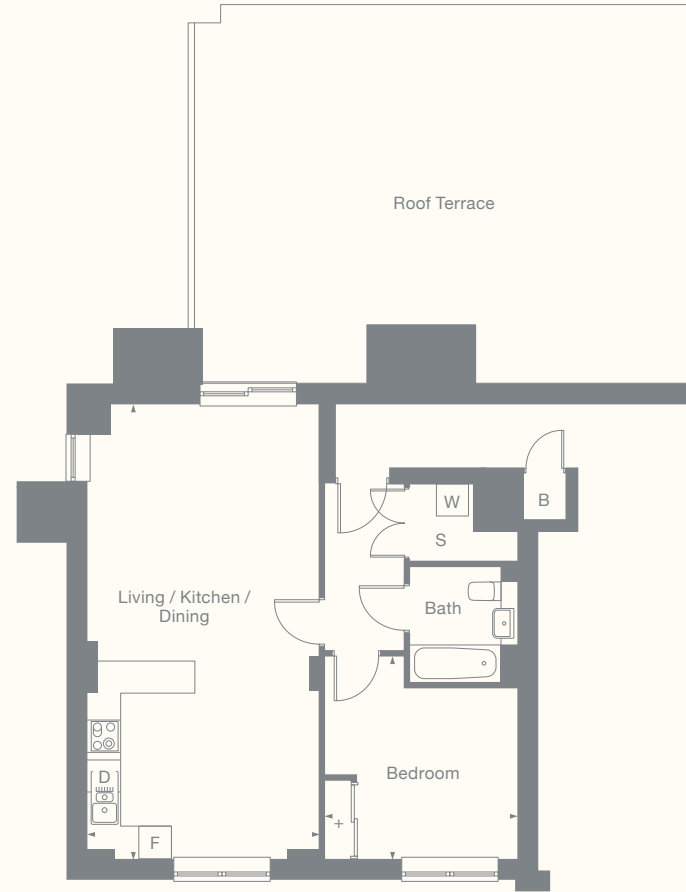
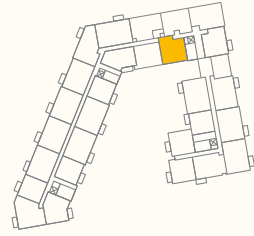
Plots	Floor	Room	Metric	Imperial
77	2	Living / Dining / Kitchen	7.3m x 4.3m	23'9" x 14'1"
98	3	Bedroom	3.5m x 4.2m	11'4" x 13'7"
119	4	GIA	59.56 m ²	641ft ²

- S Storage
- F Fridge freezer
- D Dishwasher
- W Washer dryer
- + Wardrobe
- B Boiler

Boiler area not included in GIA. Boiler area 0.5m².

Type 1N

1 Bedroom Apartment



Plots 140*
Floor 5

Room	Metric	Imperial
Living / Dining / Kitchen	4.3m x 8.4m	14'1" x 27'5"
Bedroom 1	3.6m x 3.7m	11'8" x 12'4"
GIA	62.2 m ²	670ft ²

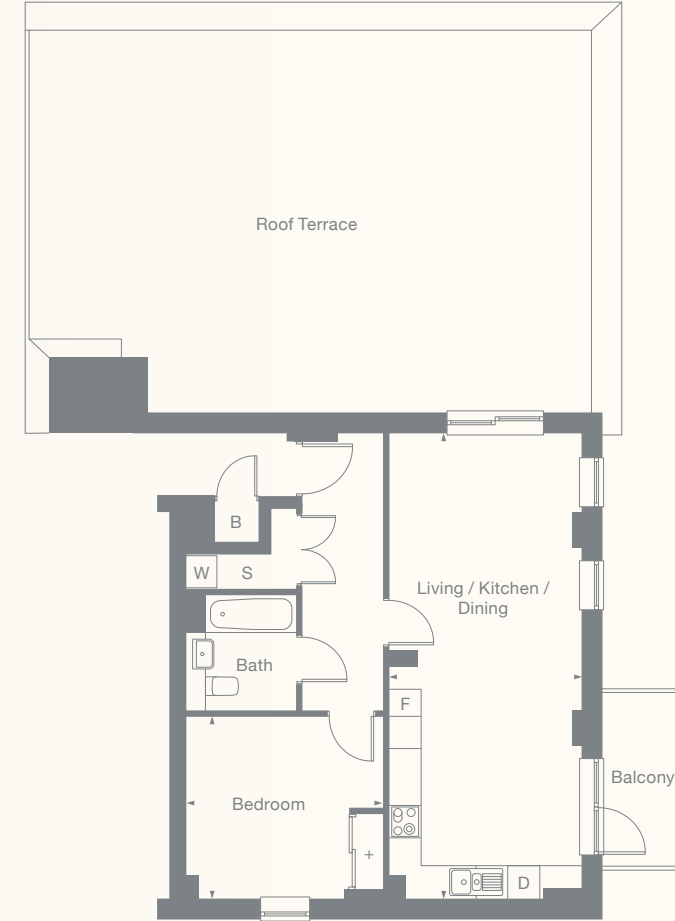
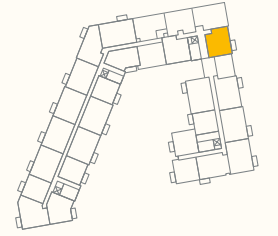
- [S] Storage
- [F] Fridge freezer
- [D] Dishwasher
- [W] Washer dryer
- [+] Wardrobe
- [B] Boiler

*This plot has a 220mm step out onto the terrace.

All floor plans in this brochure are for general guidance only. All room dimensions are subject to a plus/minus 5% tolerance. Measures are from plans and "as built" dimensions may vary. Any dimensions shown are not intended to be used for carpet sizes, appliances, spaces or items of furniture. These particulars do not constitute any part of an offer or contract. Boiler area not included in GIA. Boiler area 0.5m².

Type 1O

1 Bedroom Apartment

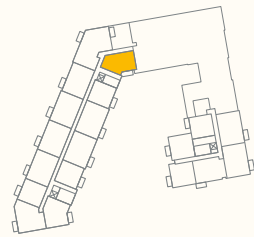


Plots 139*
Floor 5

Room	Metric	Imperial
Living / Dining / Kitchen	3.5m x 8.7m	11'4" x 28'5"
Bedroom 1	3.6m x 3.3m	11'8" x 10'8"
GIA	59.6 m ²	641ft ²

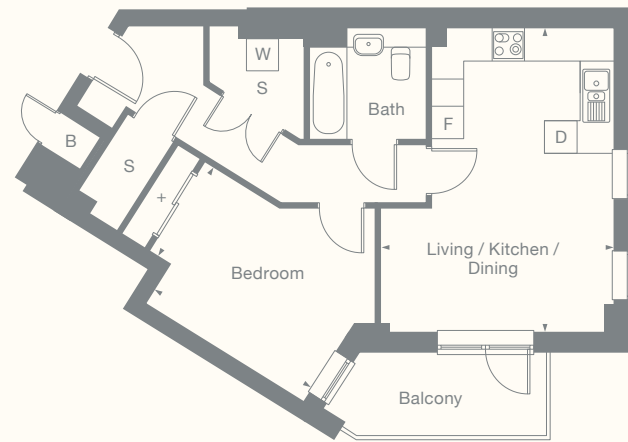
- [S] Storage
- [F] Fridge freezer
- [D] Dishwasher
- [W] Washer dryer
- [+] Wardrobe
- [B] Boiler

*This plot has a 220mm step out onto the terrace. Boiler area not included in GIA. Boiler area 0.5m².



Type 1P

1 Bedroom Apartment



Plots 181
Floor 7

Room	Metric	Imperial
Living / Dining / Kitchen	4.3m x 5.6m	12'4" x 18'3"
Bedroom 1	1.9m x 3.4m	8'10" x 11'1"
GIA	54.8 m ²	589ft ²

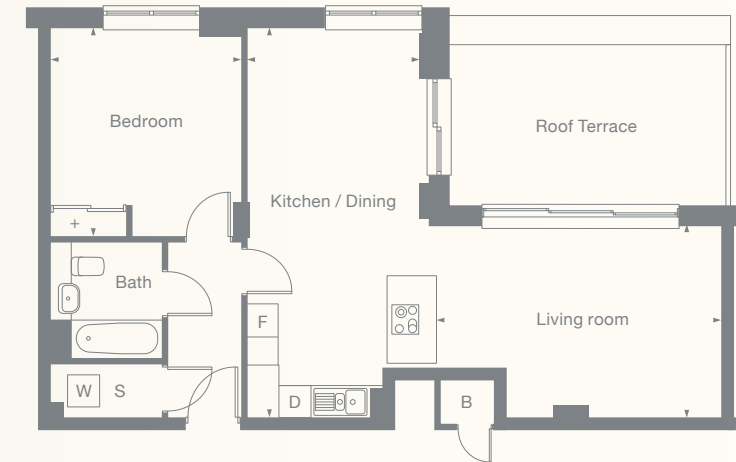
- S Storage
- F Fridge freezer
- D Dishwasher
- W Washer dryer
- + Wardrobe
- B Boiler

All floor plans in this brochure are for general guidance only. All room dimensions are subject to a plus/minus 5% tolerance. Measures are from plans and "as built" dimensions may vary. Any dimensions shown are not intended to be used for carpet sizes, appliances, spaces or items of furniture. These particulars do not constitute any part of an offer or contract. Boiler area not included in GIA. Boiler area 0.5m².



Type 1R

1 Bedroom Apartment



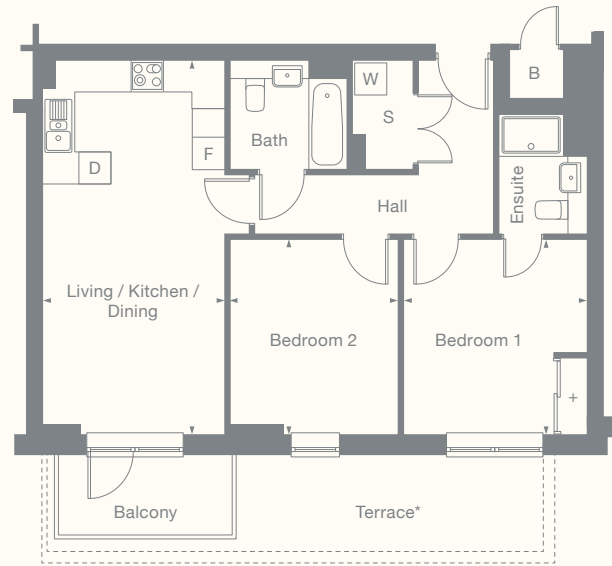
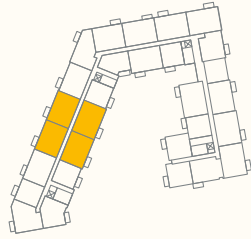
Plots 185
Floor 8

Room	Metric	Imperial
Living room	3.5m x 5.4m	11'5" x 17'8"
Dining / Kitchen	3.4m x 7.2m	11'1" x 23'6"
Bedroom 1	3.4m x 3.8m	11'1" x 12'4"
GIA	67.9 m ²	731ft ²

- S Storage
- F Fridge freezer
- D Dishwasher
- W Washer dryer
- + Wardrobe
- B Boiler

Type 2A

2 Bedroom Apartment



Plots	Floor
63 64 70* 71*	1
84 85 91 92	2
105 106 112 113	3
126 127 133 134	4
144 145 151 152	5
158 159 165 166	6
171 172 178 179	7
189 190	8

Room	Metric	Imperial
Living / Dining / Kitchen	3.3m x 7.0m	10'8" x 22'9"
Bedroom 1	3.4m x 3.6m	11'1" x 11'8"
Bedroom 2	3.1m x 3.6m	10'1" x 11'8"
GIA	69.4 m ²	747ft ²

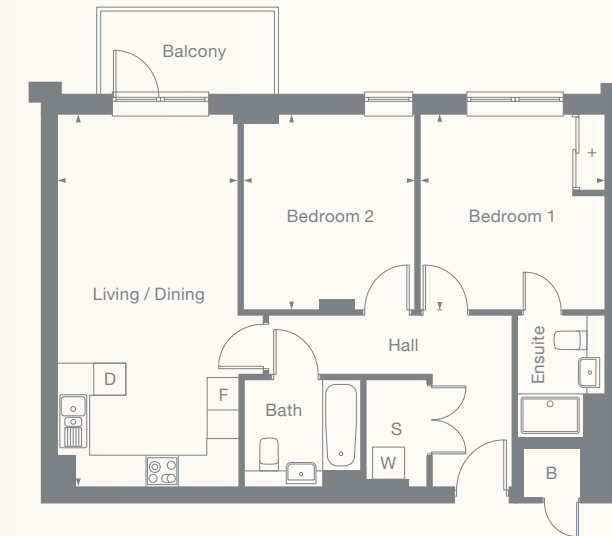
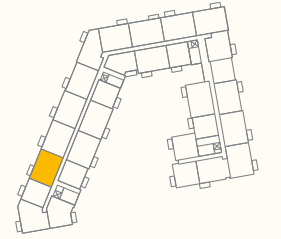
- S Storage
- F Fridge freezer
- D Dishwasher
- W Washer dryer
- + Wardrobe
- B Boiler

*Plots 70 and 71 have a roof terrace, all other plots have balconies.

All floor plans in this brochure are for general guidance only. All room dimensions are subject to a plus/minus 5% tolerance. Measures are from plans and "as built" dimensions may vary. Any dimensions shown are not intended to be used for carpet sizes, appliances, spaces or items of furniture. These particulars do not constitute any part of an offer or contract. Boiler area not included in GIA. Boiler area 0.7m²

Type 2B

2 Bedroom Apartment

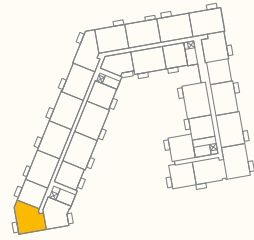


Plots	Floor
65	1
86	2
107	3
128	4
146	5
160	6
173	7

Room	Metric	Imperial
Living / Dining / Kitchen	3.3m x 6.9m	10'8" x 22'6"
Bedroom 1	3.4m x 3.6m	11'1" x 11'8"
Bedroom 2	3.2m x 3.6m	10'4" x 11'8"
GIA	70.1 m ²	755ft ²

- S Storage
- F Fridge freezer
- D Dishwasher
- W Washer dryer
- + Wardrobe
- B Boiler

Boiler area not included in GIA. Boiler area 0.7m²



Type 2C

2 Bedroom Apartment



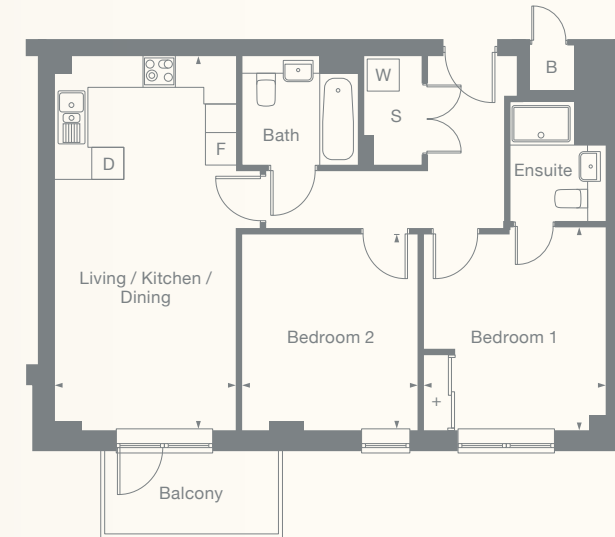
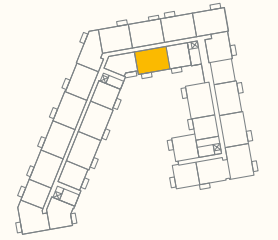
Plots	Floor	Room	Metric	Imperial
67	1	Living / Dining / Kitchen	5.3m x 5.5m	17'4" x 18'0"
88	2	Bedroom 1	3.1m x 3.3m	10'1" x 10'8"
109	3	Bedroom 2	3.3m x 3.6m	10'9" x 11'9"
130	4	GIA	70.2 m ²	755ft ²
148	5			
162	6			
175	7			
186*	8			

*This plot has a 220mm step out onto the terrace.

All floor plans in this brochure are for general guidance only. All room dimensions are subject to a plus/minus 5% tolerance. Measures are from plans and "as built" dimensions may vary. Any dimensions shown are not intended to be used for carpet sizes, appliances, spaces or items of furniture. These particulars do not constitute any part of an offer or contract. Boiler area not included in GIA. Boiler area 0.7m².

Type 2D

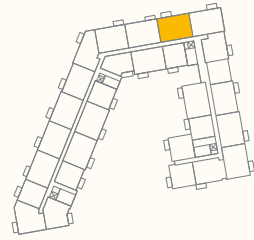
2 Bedroom Apartment



Plots	Floor	Room	Metric	Imperial
95	2	Living / Dining / Kitchen	3.3m x 7.0m	10'8" x 22'9"
116	3	Bedroom 1	3.4m x 3.7m	11'1" x 12'1"
137	4	Bedroom 2	3.3m x 3.6m	10'8" x 11'8"
		GIA	70.9 m ²	763ft ²

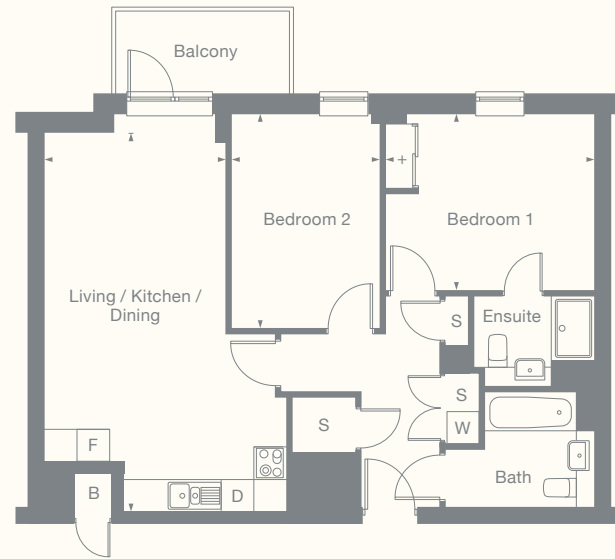
Boiler area not included in GIA. Boiler area 0.5m².

[S]	Storage
[F]	Fridge freezer
[D]	Dishwasher
[W]	Washer dryer
[+]	Wardrobe
[B]	Boiler



Type 2E-A

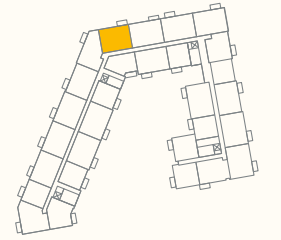
2 Bedroom Apartment



Plots	Floor	Room	Metric	Imperial
79	1	Living / Dining / Kitchen	3.3m x 7.0m	11'1" x 22'9"
100	3	Bedroom 1	3.9m x 3.2m	12'7" x 10'8"
121	4	Bedroom 2	2.7m x 3.9m	9'1" x 13'1"
GIA			72.4 m ²	779ft ²

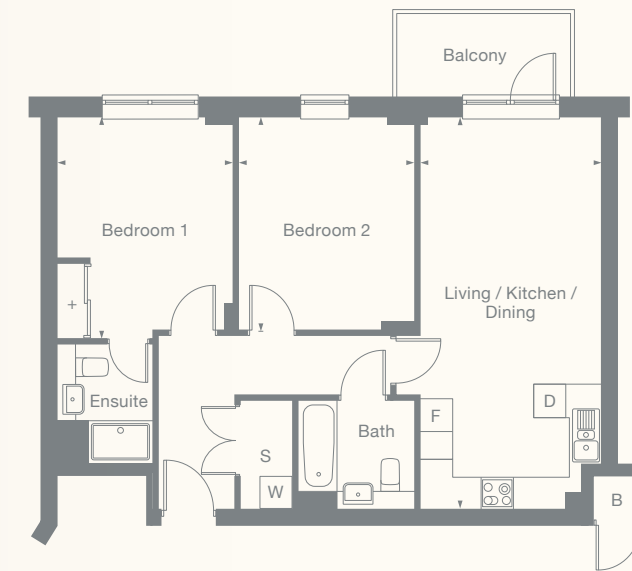
- S Storage
- F Fridge freezer
- D Dishwasher
- W Washer dryer
- + Wardrobe
- B Boiler

All floor plans in this brochure are for general guidance only. All room dimensions are subject to a plus/minus 5% tolerance. Measures are from plans and "as built" dimensions may vary. Any dimensions shown are not intended to be used for carpet sizes, appliances, spaces or items of furniture. These particulars do not constitute any part of an offer or contract. Boiler area not included in GIA. Boiler area 0.5m².



Type 2F

2 Bedroom Apartment



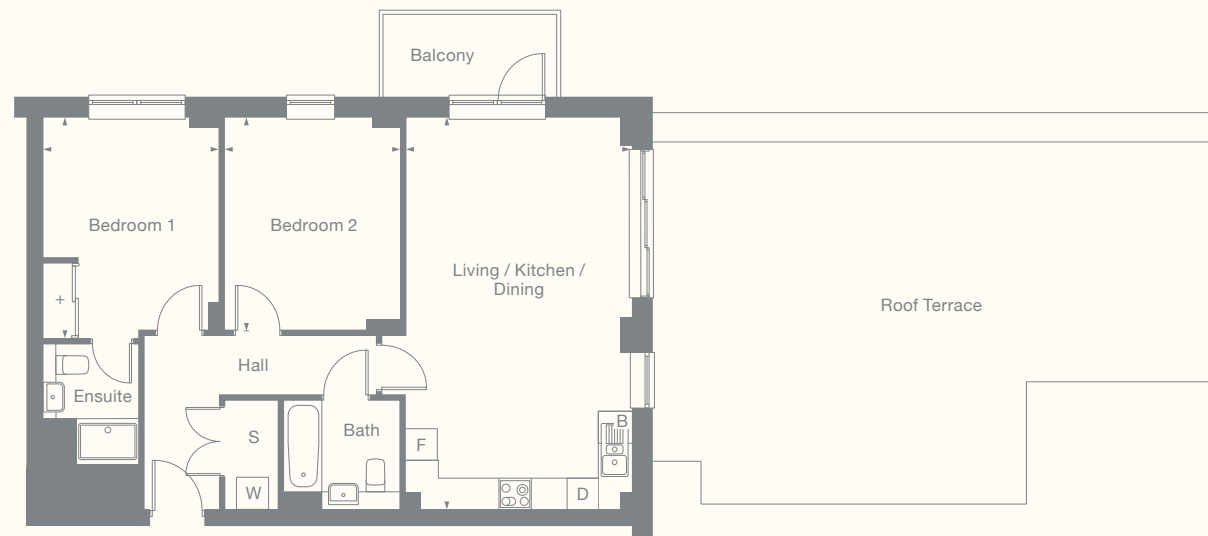
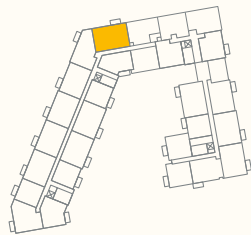
Plots	Floor	Room	Metric	Imperial
81	2	Living / Dining / Kitchen	3.3m x 7.3m	11'1" x 24'1"
102	3	Bedroom 1	3.2m x 4.1m	10'8" x 13'6"
123	4	Bedroom 2	3.3m x 3.9m	10'8" x 13'1"
GIA			72.9 m ²	784ft ²

- S Storage
- F Fridge freezer
- D Dishwasher
- W Washer dryer
- + Wardrobe
- B Boiler

Boiler area not included in GIA. Boiler area 0.7m².

Type 2P

2 Bedroom Apartment



Plots 141*
Floor 5

Room	Metric	Imperial
Living / Dining / Kitchen	4.1m x 7.3m	13'4" x 23'9"
Bedroom 1	3.2m x 4.1m	10'5" x 13'4"
Bedroom 2	3.2m x 3.9m	10'5" x 13'1"
GIA	79.0 m ²	850ft ²

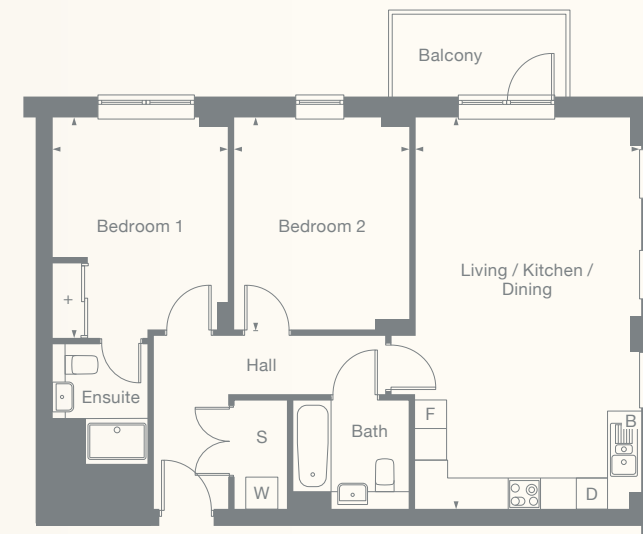
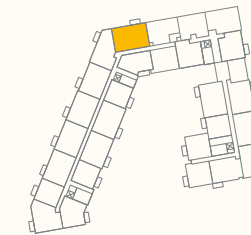
- S Storage
- F Fridge freezer
- D Dishwasher
- W Washer dryer
- + Wardrobe
- B Boiler

*This plot has a 220mm step out onto the terrace.

All floor plans in this brochure are for general guidance only. All room dimensions are subject to a plus/minus 5% tolerance. Measures are from plans and "as built" dimensions may vary. Any dimensions shown are not intended to be used for carpet sizes, appliances, spaces or items of furniture. These particulars do not constitute any part of an offer or contract. Boiler area not included in GIA. Boiler area 0.7m².

Type 2P-2

2 Bedroom Apartment



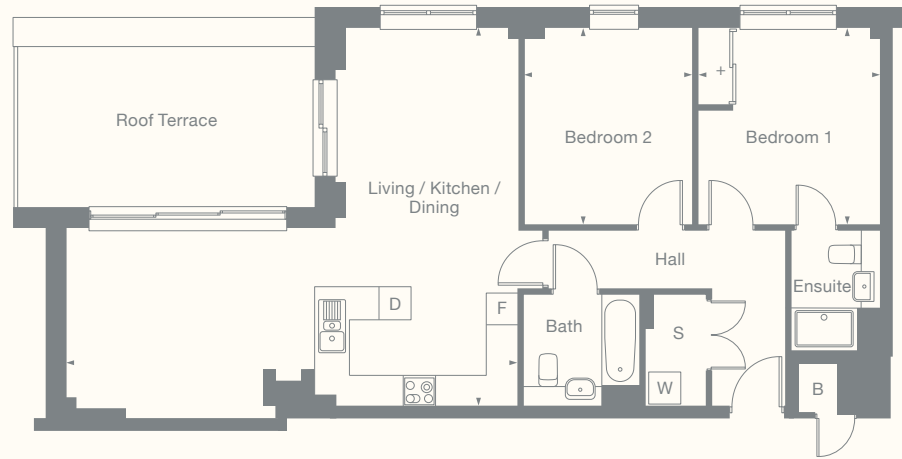
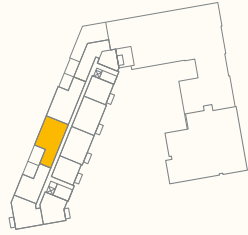
Plots 155
Floor 6

Room	Metric	Imperial
Living / Dining / Kitchen	4.1m x 7.3m	13'4" x 23'9"
Bedroom 1	3.2m x 4.1m	10'5" x 13'4"
Bedroom 2	3.2m x 4.0m	10'5" x 13'1"
GIA	79.0 m ²	850ft ²

- S Storage
- F Fridge freezer
- D Dishwasher
- W Washer dryer
- + Wardrobe
- B Boiler

Type 2Q

2 Bedroom Apartment



Plots 184*
Floor 8

Room	Metric	Imperial
Living / Dining / Kitchen	8.4m x 6.9m	27'5" x 22'6"
Bedroom 1	3.3m x 3.6m	10'8" x 11'8"
Bedroom 2	3.1m x 3.6m	10'1" x 11'8"
GIA	86.3 m ²	928ft ²

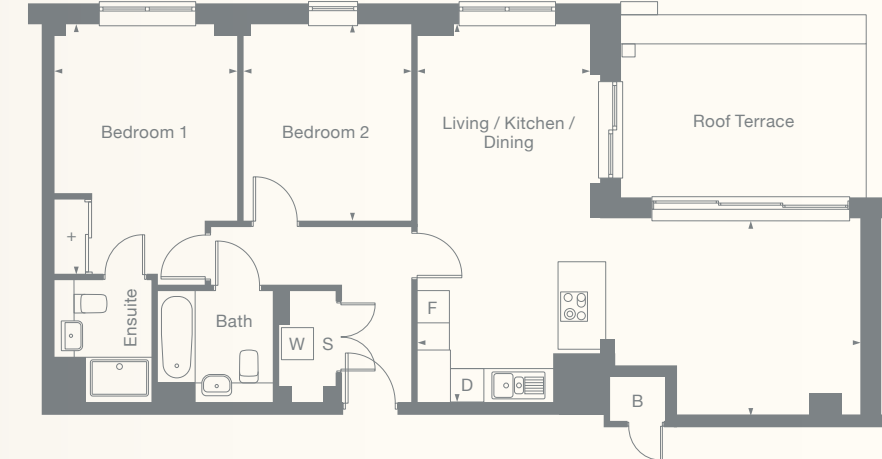
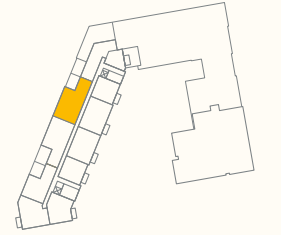
- S Storage
- F Fridge freezer
- D Dishwasher
- W Washer dryer
- + Wardrobe
- B Boiler

*This plot has a 220mm step out onto the terrace.

All floor plans in this brochure are for general guidance only. All room dimensions are subject to a plus/minus 5% tolerance. Measures are from plans and "as built" dimensions may vary. Any dimensions shown are not intended to be used for carpet sizes, appliances, spaces or items of furniture. These particulars do not constitute any part of an offer or contract. Boiler area not included in GIA. Boiler area 0.7m².

Type 2R

2 Bedroom Penthouse

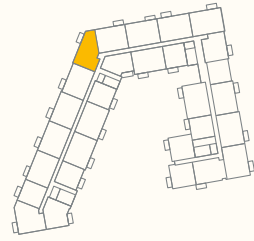


Plots 183*
Floor 8

Room	Metric	Imperial
Living / Dining / Kitchen	8.3m x 6.9m	27'2" x 22'6"
Bedroom 1	3.3m x 4.6m	10'8" x 15'0"
Bedroom 2	3.1m x 3.6m	10'1" x 11'8"
GIA	86.3 m ²	928ft ²

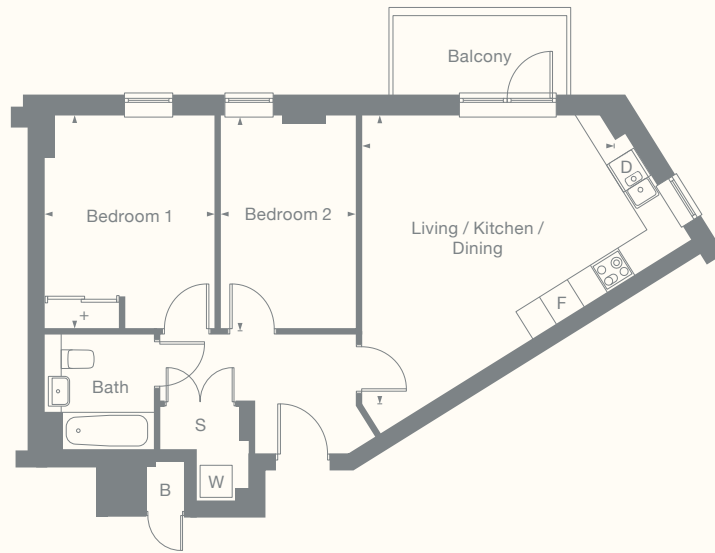
- S Storage
- F Fridge freezer
- D Dishwasher
- W Washer dryer
- + Wardrobe
- B Boiler

*This plot has a 220mm step out onto the terrace. Boiler area not included in GIA. Boiler area 0.5m².



Type 2S

2 Bedroom Apartment



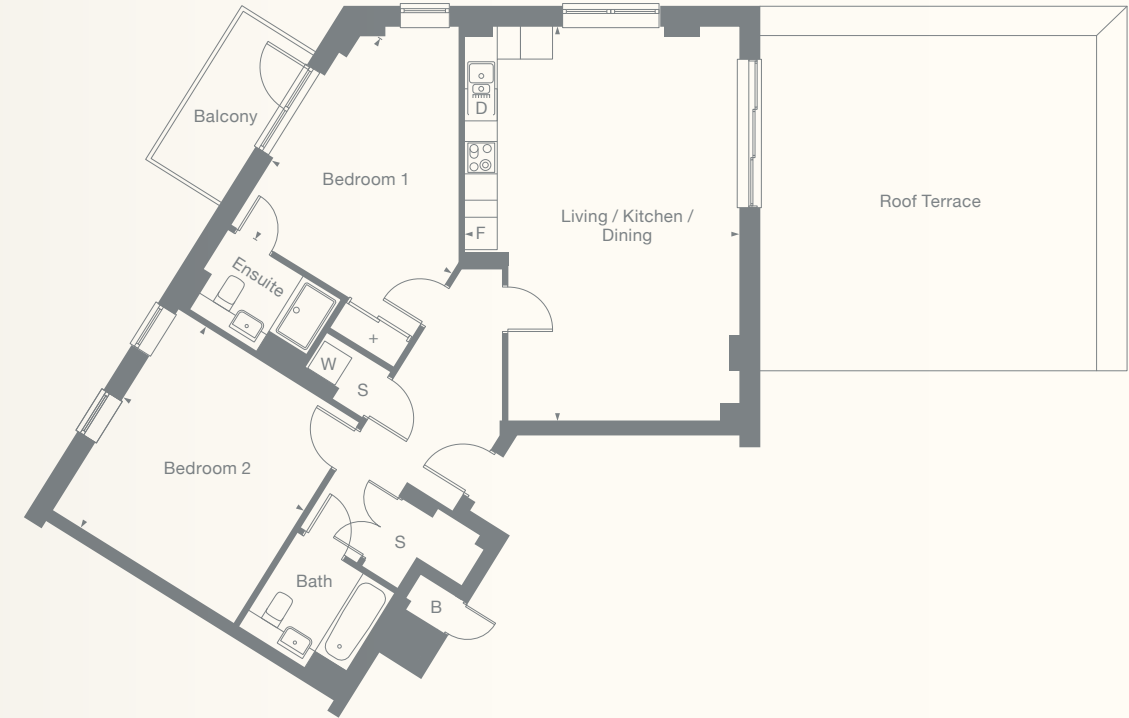
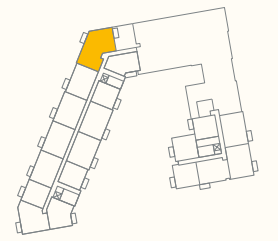
Plots	Floor	Room	Metric	Imperial
82	2	Living / Dining / Kitchen	4.7m x 5.3m	15'4" x 17'3"
103	3	Bedroom 1	3.1m x 3.9m	10'5" x 12'7"
124	4	Bedroom 2	2.5m x 4.0m	8'2" x 13'1"
142	5	GIA	62.7 m ²	674ft ²
156	6			

- S Storage
- F Fridge freezer
- D Dishwasher
- W Washer dryer
- + Wardrobe
- B Boiler

All floor plans in this brochure are for general guidance only. All room dimensions are subject to a plus/minus 5% tolerance. Measures are from plans and "as built" dimensions may vary. Any dimensions shown are not intended to be used for carpet sizes, appliances, spaces or items of furniture. These particulars do not constitute any part of an offer or contract. Boiler area not included in GIA. Boiler area 0.5m².

Type 2T

2 Bedroom Apartment



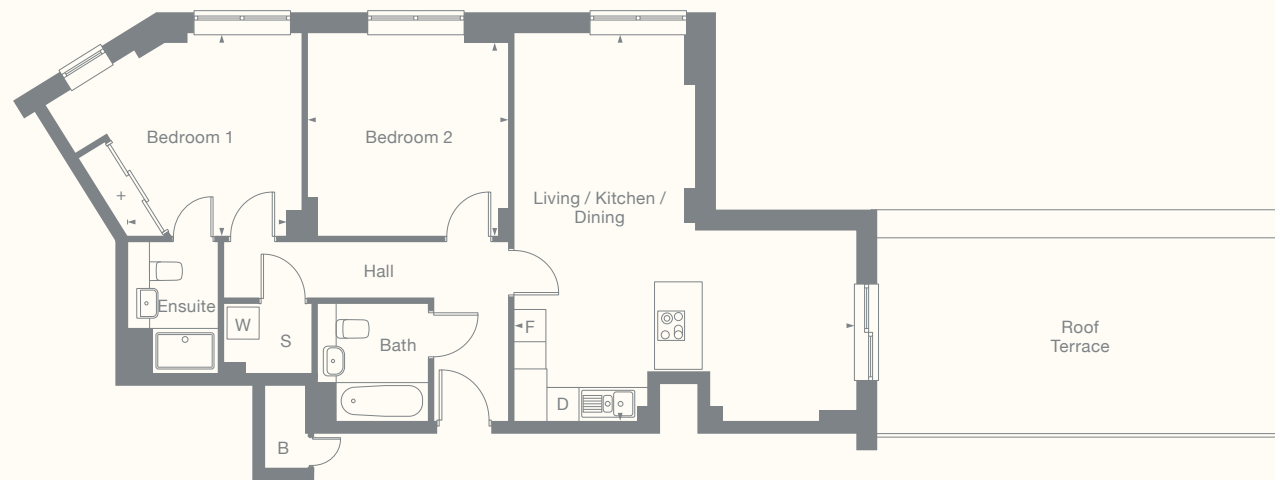
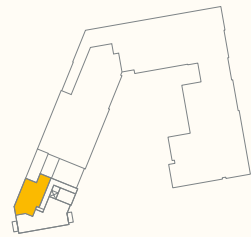
Plots	Floor	Room	Metric	Imperial
169	7	Living / Dining / Kitchen	5.1m x 7.3m	16'7" x 23'9"
		Bedroom 1	4.3m x 3.9m	14'1" x 12'7"
		Bedroom 2	4.4m x 3.9m	14'4" x 12'7"
		GIA	95.4 m ²	1027ft ²

- S Storage
- F Fridge freezer
- D Dishwasher
- W Washer dryer
- + Wardrobe
- B Boiler

Boiler area not included in GIA. Boiler area 0.5m².

Type 2U

2 Bedroom Penthouse



Plot	Floor	Room	Metric	Imperial
192*	9	Living / Dining / Kitchen	8.9m x 5.5m	29'1" x 18'0"
		Bedroom 1	4.5m x 3.3m	14'7" x 10'8"
		Bedroom 2	3.7m x 2.9m	12'1" x 9'5"
		GIA	85.3 m ²	918ft ²

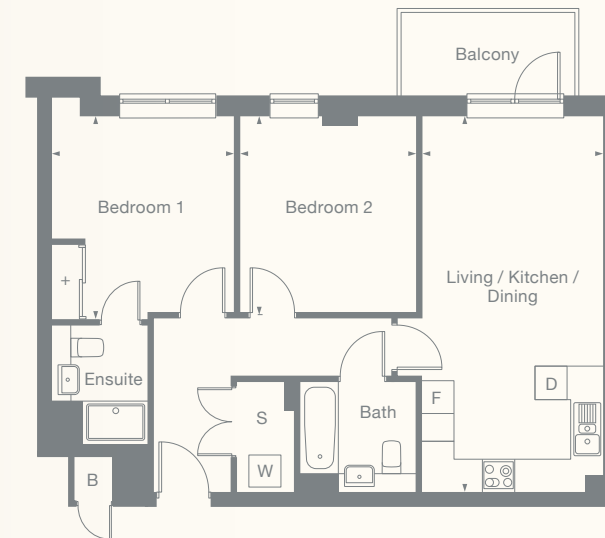
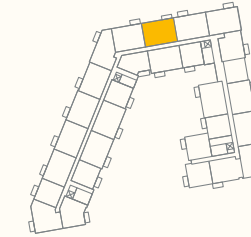
- S Storage
- F Fridge freezer
- D Dishwasher
- W Washer dryer
- + Wardrobe
- B Boiler

*This plot has a 220mm step out onto the terrace.

All floor plans in this brochure are for general guidance only. All room dimensions are subject to a plus/minus 5% tolerance. Measures are from plans and "as built" dimensions may vary. Any dimensions shown are not intended to be used for carpet sizes, appliances, spaces or items of furniture. These particulars do not constitute any part of an offer or contract. Boiler area not included in GIA. Boiler area 0.5m².

Type 2V

2 Bedroom Apartment



Plots	Floor	Room	Metric	Imperial
80	2	Living / Dining / Kitchen	3.3m x 7.0m	10'8" x 22'9"
101	3	Bedroom 1	3.4m x 3.7m	11'1" x 12'1"
122	4	Bedroom 2	3.3m x 3.6m	10'8" x 11'8"
		GIA	70.9 m ²	763ft ²

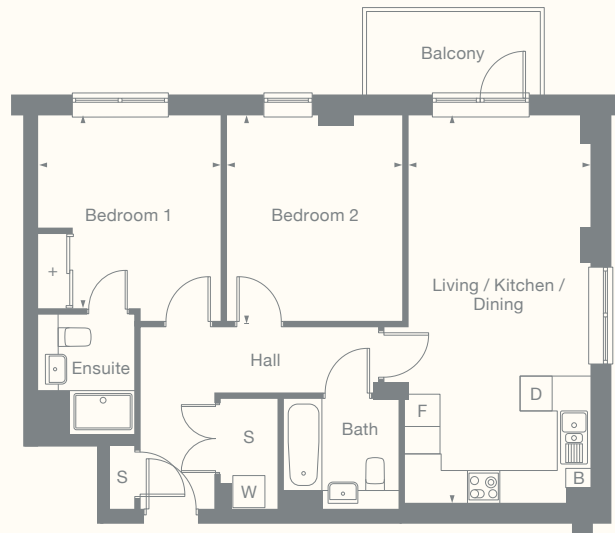
- S Storage
- F Fridge freezer
- D Dishwasher
- W Washer dryer
- + Wardrobe
- B Boiler

Boiler area not included in GIA. Boiler area 0.5m².



Type 2W

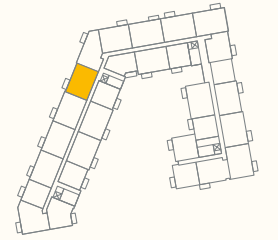
2 Bedroom Apartment



Plots	Floor	Room	Metric	Imperial
78	2	Living / Dining / Kitchen	3.3m x 7.2m	10'8" x 23'6"
99	3	Bedroom 1	3.4m x 3.6m	11'1" x 11'8"
120	4	Bedroom 2	3.3m x 3.8m	10'8" x 12'4"
		GIA	73.5 m ²	791ft ²

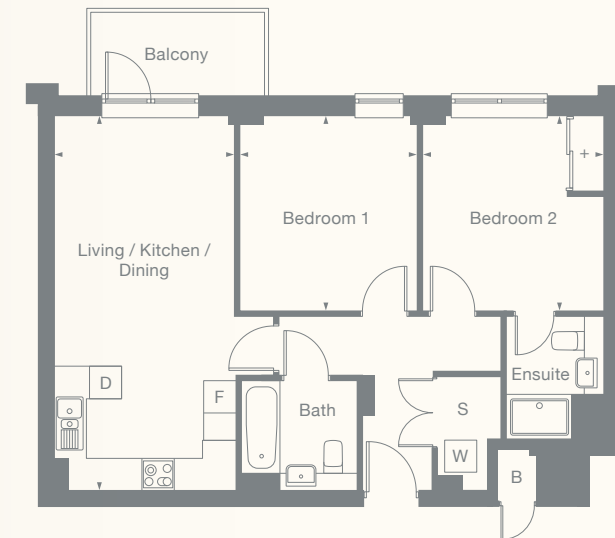
- S Storage
- F Fridge freezer
- D Dishwasher
- W Washer dryer
- + Wardrobe
- B Boiler

All floor plans in this brochure are for general guidance only. All room dimensions are subject to a plus/minus 5% tolerance. Measures are from plans and "as built" dimensions may vary. Any dimensions shown are not intended to be used for carpet sizes, appliances, spaces or items of furniture. These particulars do not constitute any part of an offer or contract. Boiler area not included in GIA. Boiler area 0.6m².



Type 2X

2 Bedroom Apartment



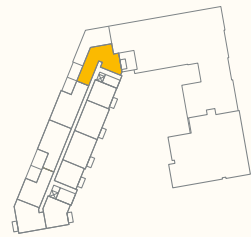
Plots	Floor	Room	Metric	Imperial
62	1	Living / Dining / Kitchen	3.3m x 6.9m	10'8" x 22'6"
83	2	Bedroom 1	3.3m x 3.6m	10'8" x 11'8"
104	3	Bedroom 2	3.3m x 3.6m	10'8" x 11'8"
125	4	GIA	69.7 m ²	750ft ²

- S Storage
- F Fridge freezer
- D Dishwasher
- W Washer dryer
- + Wardrobe
- B Boiler

Boiler area not included in GIA. Boiler area 0.5m².

Type 2Y

2 Bedroom
Penthouse



Plot 182*
Floor 8

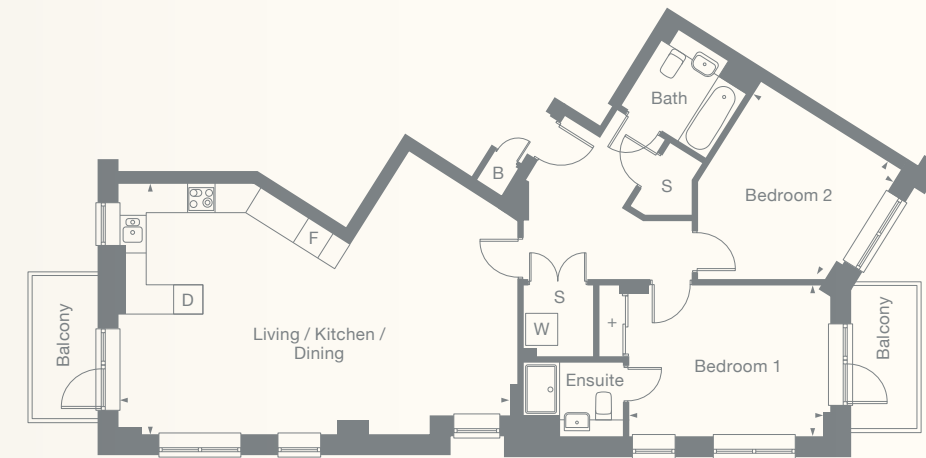
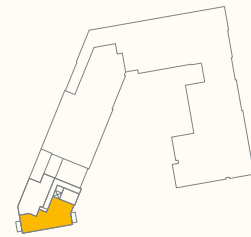
Room	Metric	Imperial
Living / Dining / Kitchen	4.2m x 5.6m	13'6" x 18'3"
Bedroom 1	4.7m x 3.6m	15'4" x 11'8"
Bedroom 2	3.2m x 3.0m	10'5" x 9'8"
GIA	84.5 m ²	909ft ²

- S Storage
- F Fridge freezer
- D Dishwasher
- W Washer dryer
- + Wardrobe
- B Boiler

*This plot has a 220mm step out onto the terrace. All floor plans in this brochure are for general guidance only. All room dimensions are subject to a plus/minus 5% tolerance. Measures are from plans and "as built" dimensions may vary. Any dimensions shown are not intended to be used for carpet sizes, appliances, spaces or items of furniture. These particulars do not constitute any part of an offer or contract. Boiler area not included in GIA. Boiler area 0.7m².

Type 2Z

2 Bedroom
Penthouse



Plots 193
Floor 9

Room	Metric	Imperial
Living / Dining / Kitchen	6.4m x 7.2m	21'0" x 23'6"
Bedroom 1	3.2m x 3.7m	10'5" x 12'1"
Bedroom 2	3.7m x 3.7m	12'1" x 12'1"
GIA	103.7 m ²	1116ft ²

- S Storage
- F Fridge freezer
- D Dishwasher
- W Washer dryer
- + Wardrobe
- B Boiler



With SO Resi, you buy your own home in your own way. You start with a share that's right for you, then you can buy extra shares over time, so it's all manageable and suits your income.

You start by buying between 25% and 75% of your SO Resi home. That means your monthly mortgage payments and deposit are smaller than they would be if you bought your home outright. There are two other monthly payments for your SO Resi home. One is the SO Resi payment for the share of your home that Metropolitan Thames Valley owns. The other is the service charge, which pays to look after the building you live in. There are also the usual other costs, like household utility bills. You can choose to buy a bigger share of your SO Resi home in the future, and even own 100%. The bigger the share you own, the lower your SO Resi payment will be.

You can sell your share at any time if you decide to move on.

We're here to help

Whatever your needs, we're on hand to help at every stage. First we'll help you understand all the costs and work out what's affordable for you. If you decide to go ahead, we'll be there to answer your questions. And in the future, we can help you with buying a bigger share of your home, or with selling up if it's time for a change.

Tel: 0208 607 0550

Email sales@soresi.co.uk

or visit sharedownership.co.uk

MTVH has taken all reasonable care in the preparation of the information given in this brochure. However, this information is subject to change and has been prepared solely for the purpose of providing general guidance. MTVH does not warrant the accuracy or completeness of this information. Particulars are given for illustrative purposes only. MTVH undertakes continuous product development and any information given relating to our products may vary from time to time. The information and particulars set out within this brochure do not constitute part of a formal offer invitation or contract to acquire the relevant property. For the reasons mentioned above, no information contained in this brochure is to be relied upon. In particular, all plans prospectus, descriptions, dimensions and measurements are approximate and provided for guidance only. Such information is given without responsibility on the part of MTVH.

March 2024