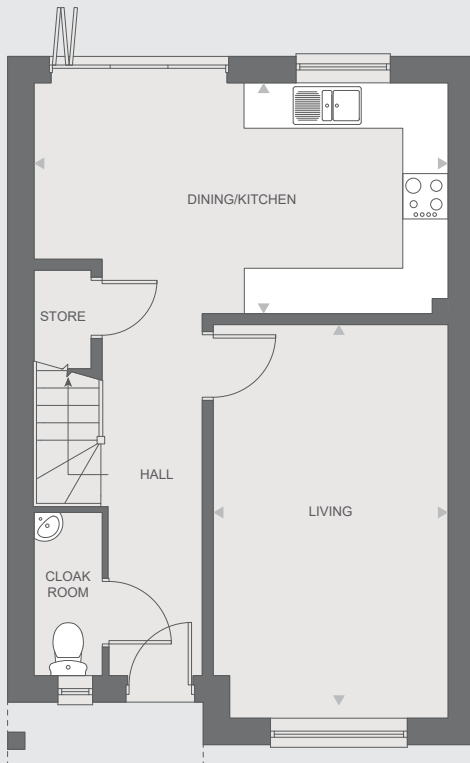
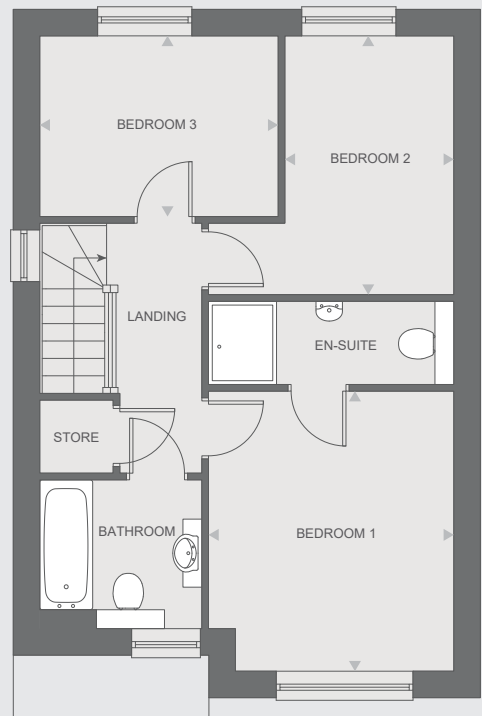


# 3-bedroom house

Kitchen/dining room	5.48m x 3.05m
Living room	5.03m x 3.11m
Main bedroom	3.23m x 3.07m
Main bedroom en-suite	3.24m x 1.51m
Bedroom 2	3.42m x 3.23m
Bedroom 3	3.15m x 2.39m
Bathroom	2.18m x 2m
<b>Total Area</b>	<b>89 sq m</b>



GROUND FLOOR



FIRST FLOOR



Any floor plans are a general outline of the layout of the property for guidance only. All measurements are approximate and may vary and any intending purchasers should not rely on them as statements of fact or representations of fact but must satisfy themselves by inspection or otherwise as to their accuracy. Dimensions shown are not intended to be relied upon for installation of appliances or items of furniture or otherwise. Cgi's and images are for illustrative purposes only and do not constitute nor constitute part of an offer or contract.