

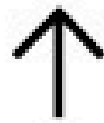


# Willowbrook Park

**2 bedroom  
apartments**

# Willowbrook Park Site plan

North



 **Apartment block**  
2 bedroom apartment

 **Parking spaces**

Site layout and landscaping is indicative only and subject to change.



# Willowbrook Park

## The Culham

2 bedroom ground floor apartment  
Plot 477

2  1  1 



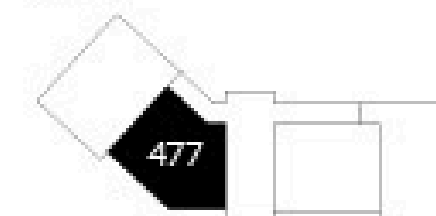
### Room

Kitchen/living/dining	5.2m x 7.3m
Bedroom 1	3.1m x 3.4m
Bedroom 2	3.0m x 3.4m

L Laundry cupboard S Storage W Wardrobe

Dimensions provided are for general guidance and are not intended to be used for carpet sizes, appliances, spaces or items of furniture. All dimensions are maximum.

Ground  
Floor



# Willowbrook Park The Fraser

2 bedroom ground floor apartment  
Plot 478

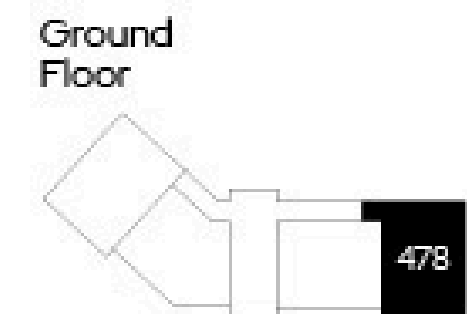
2  1  1 

## Room

Kitchen/living/dining	7.3m x 4.6m
Bedroom 1	4.0m x 3.1m
Bedroom 2	4.0m x 3.0m



L Laundry cupboard S Storage W Wardrobe



Dimensions provided are for general guidance and are not intended to be used for carpet sizes, appliances, spaces or items of furniture. All dimensions are maximum.

# Willowbrook Park The Bradford

2 bedroom apartment with balcony  
Plot 479, 483, 487

2 🏠 1 🚿 1 🚗

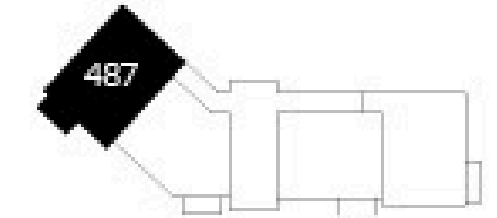
## Room

Kitchen/living/dining	7.3m x 4.8m
Bedroom 1	3.9m x 3.1m
Bedroom 2	3.9m x 3.0m

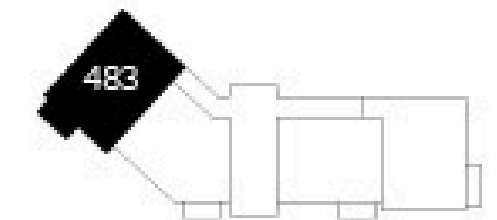
L Laundry cupboard S Storage W Wardrobe



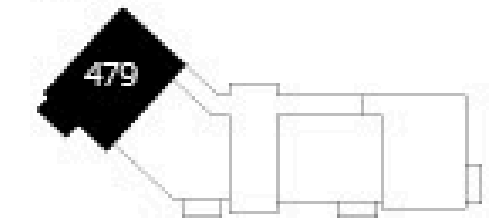
Third  
Floor



Second  
Floor



First  
Floor



Dimensions provided are for general guidance and are not intended to be used for carpet sizes, appliances, spaces or items of furniture. All dimensions are maximum. Typical floor plan.

# Willowbrook Park The Culham

2 bedroom apartment with balcony  
Plot 480, 484, 488

2 🏠 1 🚿 1 🚗



## Room

Kitchen/living/dining	5.2m x 7.3m
Bedroom 1	3.1m x 3.4m
Bedroom 2	3.0m x 3.4m

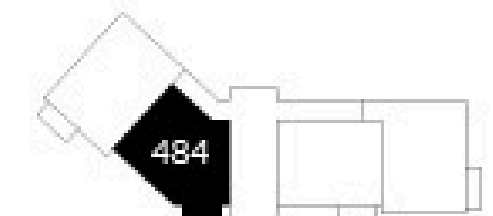
L Laundry cupboard S Storage W Wardrobe

Dimensions provided are for general guidance and are not intended to be used for carpet sizes, appliances, spaces or items of furniture. All dimensions are maximum.

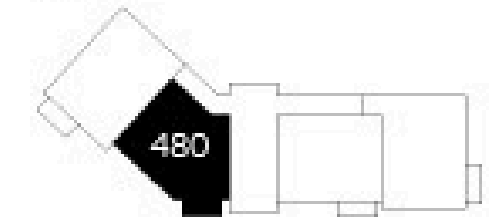
Third  
Floor



Second  
Floor



First  
Floor



# Willowbrook Park The Harwell

2 bedroom apartment with balcony  
Plot 481, 485, 489

2  1  1 

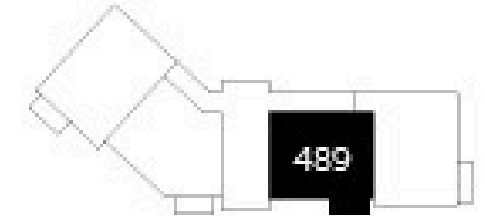
## Room

Kitchen/living/dining	4.5m x 7.3m
Bedroom 1	3.1m x 3.9m
Bedroom 2	3.0m x 3.9m

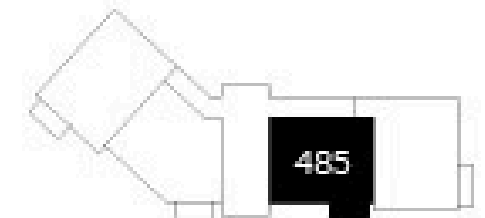


L Laundry cupboard S Storage W Wardrobe

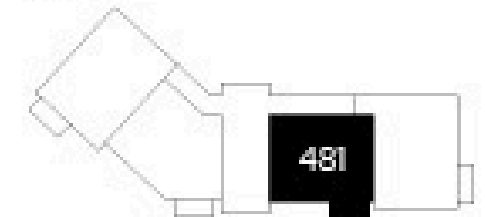
Third  
Floor



Second  
Floor



First  
Floor



Dimensions provided are for general guidance and are not intended to be used for carpet sizes, appliances, spaces or items of furniture. All dimensions are maximum. Typical floor plan.

# Willowbrook Park The Fraser

2 bedroom apartment with balcony  
Plot 482, 486, 490

2 🏠 1 🚿 1 🚗

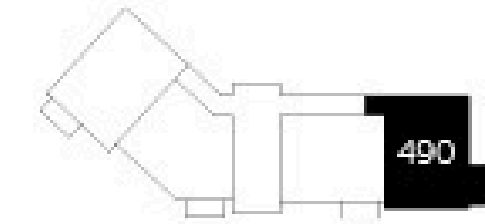
## Room

Kitchen/living/dining	7.3m x 4.6m
Bedroom 1	4.0m x 3.1m
Bedroom 2	4.0m x 3.0m

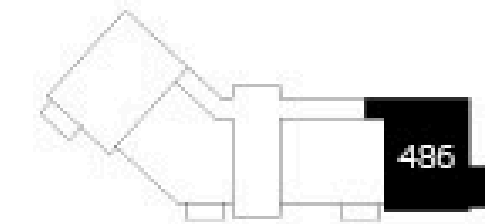


L Laundry cupboard S Storage W Wardrobe

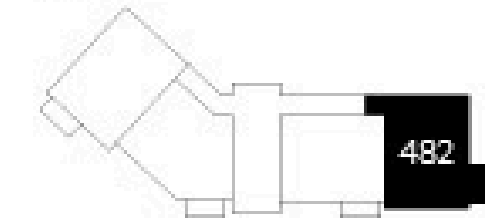
Third  
Floor



Second  
Floor



First  
Floor



Dimensions provided are for general guidance and are not intended to be used for carpet sizes, appliances, spaces or items of furniture. All dimensions are maximum. Typical floor plan.



Plot No.	Property details	Price	% Share	Share price	Monthly rent	Est. monthly service charge	Est Handover date
<b>2 Bedroom Apartments</b>							
476	Ground floor 2 bed apartment	£240,000	40%	£96,000	£300.00	£125	October 2024
477	Ground Floor 2 bed apartment	£242,500	40%	£97,000	£303.13	£125	October 2024
478	Ground Floor 2 bed apartment	£247,500	40%	£99,000	£309.38	£125	October 2024
479	First Floor 2 bed apartment with balcony	£245,000	40%	£98,000	£306.25	£125	October 2024
480	First Floor 2 bed apartment with balcony	£250,000	40%	£100,000	£312.50	£125	October 2024
481	First Floor 2 bed apartment with balcony	£245,000	40%	£98,000	£306.25	£125	October 2024
482	First Floor 2 bed apartment with balcony	£252,500	40%	£101,000	£315.63	£125	October 2024
483	Second Floor 2 bed apartment with balcony	£245,000	40%	£98,000	£306.25	£125	October 2024
484	Second Floor 2 bed apartment with balcony	£250,000	40%	£100,000	£312.50	£125	October 2024
485	Second Floor 2 bed apartment with balcony	£245,000	40%	£98,000	306.25	£125	October 2024
486	Second Floor 2 bed apartment with balcony	£252,500	40%	£101,000	£315.63	£125	October 2024
487	Third Floor 2 bed apartment with balcony	£245,000	40%	£98,000	£306.25	£125	October 2024
488	Third Floor 2 bed apartment with balcony	£247,500	40%	£99,000	£309.38	£125	October 2024
489	Third Floor 2 bed apartment with balcony	£245,000	40%	£98,000	£306.25	£125	October 2024
490	Third Floor 2 bed apartment with balcony	£252,500	40%	£101,000	£315.63	£125	October 2024

Prices, monthly rental charge, and services charge are correct at time of print and subject to annual review. Management fee under review. Eligibility conditions apply and can be found at [www.sovereign.org.uk](http://www.sovereign.org.uk). **July 2024.**

Sovereign Housing Association and Network Homes came together as SNG (Sovereign Network Group) in October 2023. Sovereign Network Group is the trading name of Sovereign Housing Association Limited, which is charitable: <https://www.sovereign.org.uk/legal-and-charitable-statement>