



## THE REDGRAVE

The Redgrave is a thoughtfully designed two-storey, three-bedroom home which features a spacious kitchen-dining area in addition to a living room, ample built-in storage and both an en suite and family bathroom. Carefully selected products and materials throughout give this home a distinct mark of quality.

3 BEDROOM HOME



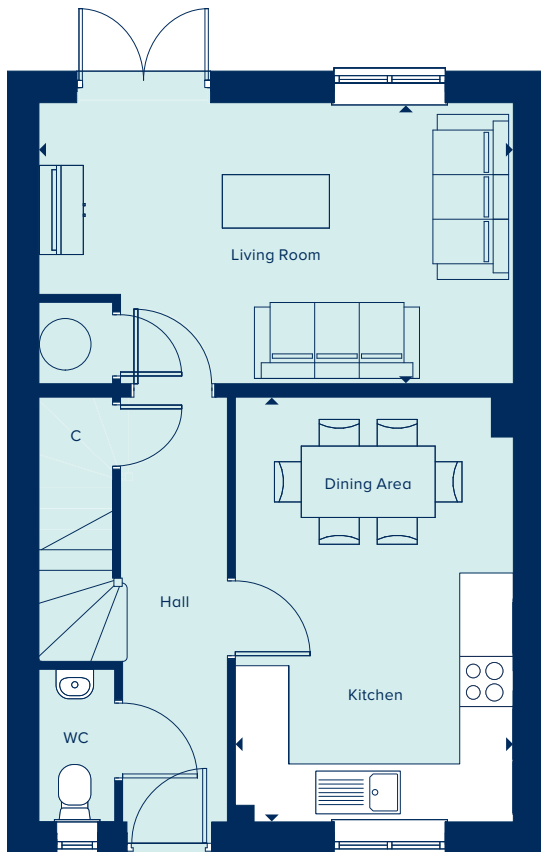


**CREST  
NICHOLSON**

## THE REDGRAVE

3 Bedroom Home

[crestnicholson.com](http://crestnicholson.com)



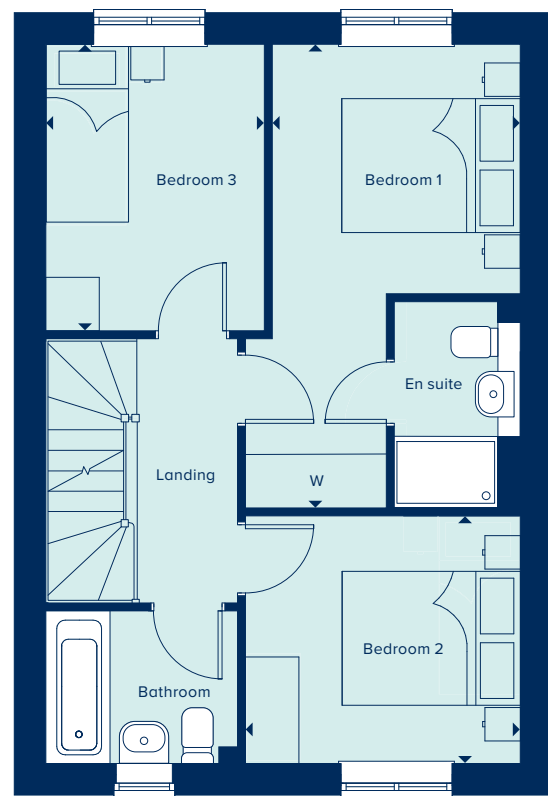
### GROUND FLOOR

#### KITCHEN / DINING AREA

4.75m x 3.11m      15'7" x 10'2"

#### LIVING ROOM

5.31m x 3.15m      17'5" x 10'4"



### FIRST FLOOR

#### BEDROOM 1

5.19m x 2.77m      17'0" x 9'1"

#### BEDROOM 2

3.07m x 2.77m      10'1" x 9'1"

#### BEDROOM 3

3.21m x 2.45m      10'6" x 8'0"

C Cupboard    W Wardrobe

Please note, the digital illustrations are for illustration purposes only and any may not accurately depict elevation materials, gradients, landscaping or street furniture and may be subject to change. Whilst every effort has been made to ensure that the measurements and dimensions referred to in this brochure are an accurate reflection of the dimensions and measurements of the plots when built, the dimensions may vary from the measurements shown in the brochure save that any such variation shall be no greater than +/- 50mm of the measurements referred to in the brochure. You are strongly advised, therefore, not to order any carpets, appliances or any other goods which depend on precise dimensions before carrying out an actual measurement within your reserved plot. Whilst every reasonable effort has been made to ensure that the information contained in this brochure is correct, it is designed specifically as a guide only and does not constitute or form any part of a contract of sale transfer or lease unless any point that you specifically want to rely on is confirmed in writing by Crest Nicholson and is referred to in the contract. Please ask a sales executive for further details. Crest Nicholson is a registered developer with the New Homes Quality Code. Please speak to a sales executive if you need further help with any marketing material including provision in another format. 1011365/December 2023.

