

# The Aster

## Orbit Homes at Beaumont Park

### Two Bedroom Home

Plots 67, 68, 69, 146, 147, 148 & 149

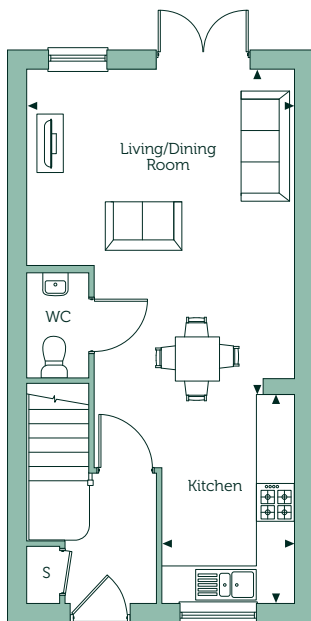


Your place  
to thrive

[orbithomes.org.uk](https://orbithomes.org.uk)  
✉ [homes@orbit.org.uk](mailto:homes@orbit.org.uk)

# The Aster

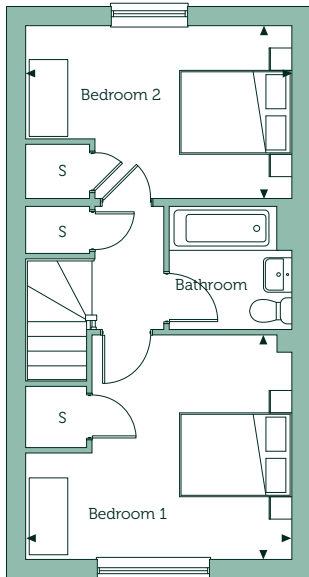
Orbit Homes at Beaumont Park



## Ground Floor

<b>Kitchen</b>	
6'9" x 11'7"	2.07m x 3.55m

<b>Living/Dining Room</b>	
13'9" x 16'3"	4.19m x 4.97m



## First Floor

<b>Bedroom 1</b>	
13'9" x 9'0"	4.19m x 2.76m

<b>Bedroom 2</b>	
13'9" x 11'8"	4.19m x 3.56m

<b>Gross internal area</b>	
764 sq ft	71.03 sq m

### Key

S Store Cupboard

Floorplans are not drawn to scale. Measurements are taken from areas marked with an arrow. They are maximum approximate dimensions and given as a guide only. These should not be used as a basis for purchasing flooring or furniture. Orbit reserve the right to alter plans, specifications, position of doors and windows and change tenure subject to demand without prior notice. External elevations vary from plot to plot. Please ask your Sales Consultant for current information when reserving your new home. Information correct at time of going to print. Computer generated image overleaf.

# The Iris

## Orbit Homes at Beaumont Park

Three Bedroom Home

Plots 105, 106, 150, 151, 163 & 191

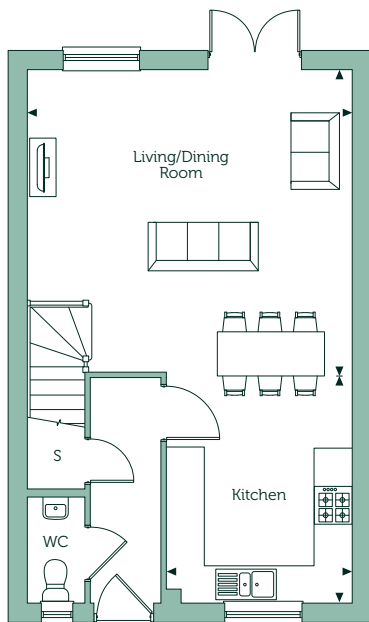


Your place  
to thrive

[orbithomes.org.uk](https://orbithomes.org.uk)  
✉ [homes@orbit.org.uk](mailto:homes@orbit.org.uk)

# The Iris

Orbit Homes at Beaumont Park



## Ground Floor

### Kitchen

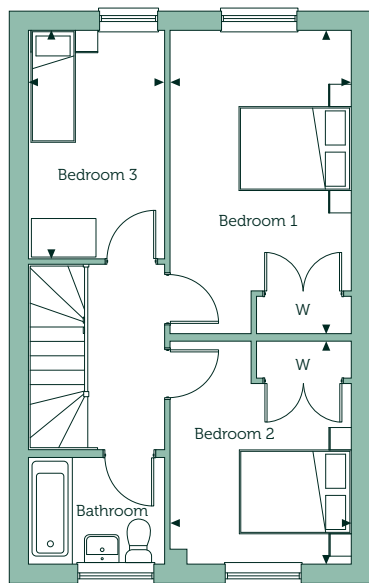
9'7" x 12'1"

2.92m x 3.69m

### Living/Dining Room

16'10" x 15'11"

5.12m x 4.84m



## First Floor

### Bedroom 1

9'3" x 15'10"

2.84m x 4.84m

### Bedroom 2

9'3" x 11'8"

2.84m x 3.56m

### Bedroom 3

6'11" x 11'10"

2.13m x 3.63m

### Gross internal area

926 sq ft

86.06 sq m

## Key

S Store Cupboard W Fitted Wardrobe

Floorplans are not drawn to scale. Measurements are taken from areas marked with an arrow. They are maximum approximate dimensions and given as a guide only. These should not be used as a basis for purchasing flooring or furniture. Orbit reserve the right to alter plans, specifications, position of doors and windows and change tenure subject to demand without prior notice. External elevations vary from plot to plot. Please ask your Sales Consultant for current information when reserving your new home. Information correct at time of going to print. Computer generated image overleaf.