

STAY
CONNECTED



PECKHAM SE15



ONE & TWO BEDROOM APARTMENTS
FOR SHARED OWNERSHIP



YOUR HOME IN THE HEART OF SE15

These brand new one and two bedroom apartments at The Bridge offer urban luxury and convenience in vibrant Peckham. Apartments on the upper floors boast breathtaking city views, providing you with a daily dose of the iconic London skyline.

The development features a shared landscaped courtyard*, creating a serene oasis amidst the urban hustle and bustle, perfect for relaxation and community gatherings. Each apartment boasts a generous private balcony or terrace, perfect for enjoying your morning coffee or hosting gatherings with friends and family. Inside, the apartments are built to a high specification, with stylish finishes that cater to all your modern living needs.

Welcome to The Bridge – a world of comfort, style, and iconic urban vistas in the heart of Peckham SE15.

*Please note the shared courtyard is not gated and is a communal neighbourhood space





THE CLF ART LOUNGE AND ROOF GARDEN

PECKHAM HOUSE ROOF

Peckham. Recently rated one of the best places to live in London by The Sunday Times. Considered to be the 11th coolest neighbourhood in the world (yes the world!) in a 2019 Time Out survey. Close to the City and West End, with the perfect balance of vibrant, urban energy and cool, laid-back charm, Peckham is the real deal. In the past 20 years it has benefitted from a massive rejuvenation programme and seen its culture and amenities revitalised. No wonder more and more people are choosing to move here.

You could join them. The stunning new development, The Bridge puts you right at the heart of Peckham, in a stylish new apartment equipped with contemporary, streamlined kitchen, light and open living areas and well proportioned bedrooms. All made more affordable to buy with Shared Ownership.

URBAN OASIS



BURGESS PARK

Considering how near Peckham is to the centre of town, it's easy to find a green space to enjoy a sunny afternoon chilling with friends. The Surrey Canal Linear Path runs close by, following the route of the former waterway. Burgess Park is one of London's biggest parklands and easy to get to from your new front door. Its lake is well stocked with carp, roach and bream – just head for the designated angling area.

Then there's Peckham Rye Park and Common with its meadows and woodlands, Japanese Garden, formal flower beds, quiet areas, river and lake. No wonder it's considered the jewel in Peckham's crown. The Sexby Garden is a big favourite with locals, offering the perfect oasis of calm, away from the bustle of the urban streets.



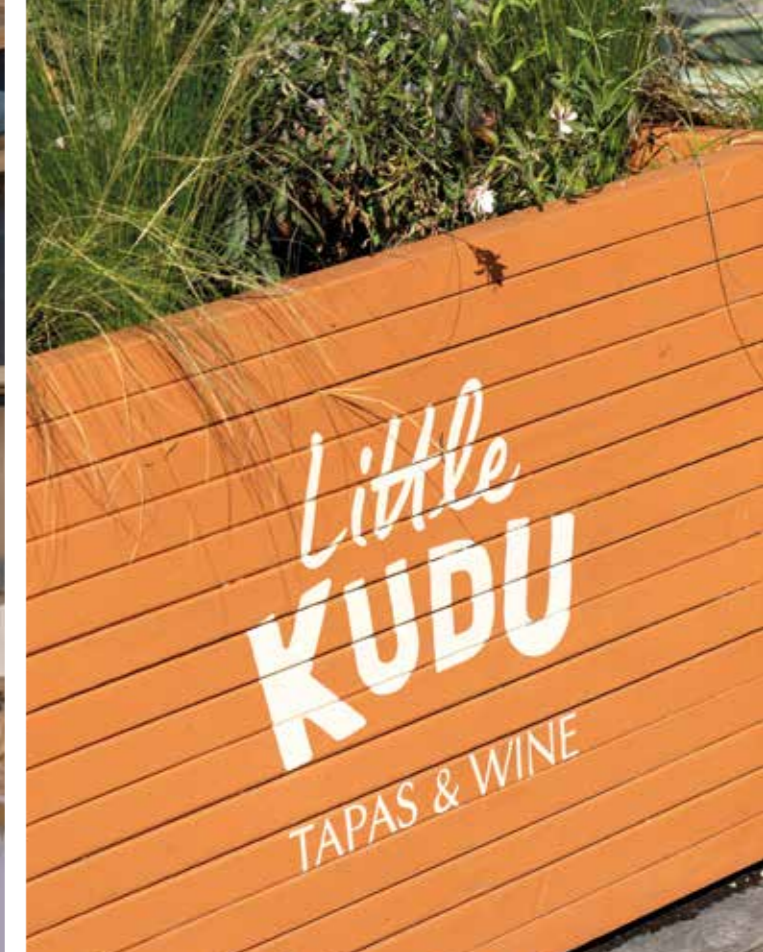
PECKHAM RYE PARK & COMMON



PECKHAM CELLARS



BLACKBIRD BAKERY



SCRUMPTIOUS NEIGHBOURS



GANAPATI SOUTH INDIAN KITCHEN



MAMMA DOUGH



FLOCK
HERD
Butchery

ROOFTOP VIBES WITH VIEWS

Peckham has become famous for its rooftop bars and you only need take one look at the panoramic skyline to see why. There are great views to be had in all directions and the silhouettes of the city skyscrapers make a dramatic backdrop to an after work drink.

Perched in Peckham, the Skylight bar offers an enchanting sunset experience. Sip on cocktails, unwind, and relish the urban beauty as day transitions into twilight.

The Bussey Rooftop Bar is the highest in the neighbourhood and you sit under a canopy of flowers as you sip your cocktail – the perfect Instagram moment. Make sure you check out the local cinema club there.

Frank's Café, with its bubble-gum pink staircase, is another local rooftop favourite. It's a bar that also plays host to art exhibitions and live music, a great way to party on a hot summer's night.



SKYLIGHT PECKHAM ROOFTOP BAR



WIND DOWN
AT SUNSET





OR RISE AND SHINE WITH THE SUNRISE

YOU'RE ON THE RIGHT TRACK

Whether you're jogging the footpaths, using one of the open air gyms or having a game of tennis, the local parks are your playground. Peckham Park Leisure Centre boasts a 25 metre, six lane pool, hydrotherapy and sauna, large gym laid out over two floors and a choice of fitness studios offering everything from HIIT and Zumba to Yoga and Pilates. There are local football, cricket and rugby clubs, an organised park run in Burgess Park and even a local boxing club.

Of course, living so close to the centre of London, the whole of this great sporting city is at your disposal, from football, cricket and tennis to BMX and skateboarding.

GO EXPLORE

Rye Lane is one of London's great shopping streets – with a thriving market and independent stores offering eye-catching treasures from around the world. The Aylesham is the local shopping centre and, in addition to the large supermarkets, there's a Farmer's Market every Sunday.

This is a great part of town for foodies with an inspiring choice of local bakeries and delis. You can sample dishes from round the world without leaving Peckham. The Begging Bowl is a favourite for fabulous Thai cuisine while Made of Dough is famous for its pizzas. Be sure to visit the Coal Rooms in Peckham Rye train station. This innovative restaurant serves a seasonal menu prepared on its bespoke, coal-fired grill.



GENERAL STORE



PECKHAM CELLARS



REVIEW BOOKSHOP



MARKET PECKHAM



PECKHAMPLEX CINEMA



BLACKBIRD BAKERY

LOCAL GENERAL STORE



FSC

PECKHAM SOUL

RISE WITH



PECKHAM LIBRARY



COPELAND PARK & BUSSEY BUILDING

FREE YOUR IMAGINATION

Peckham has a creative energy so strong you can almost touch it. You feel its power while you're browsing the local bookshops or gazing up at the vibrant street murals. The library won a major architectural prize, the local stage school is famous and even the Peckhamplex cinema has a style of its own – not to mention remarkably low seat prices.

From Grime to Grand Opera there's music everywhere. Keep an ear out for the live performances at the CLF Art Café – one day it might be classical, the next electronic dance.



THE KILN ROOMS



THE SOUTH LONDON GALLERY



VICTORIA INN, BELLENDEN ROAD



LEVELS
 PECKHAM
 PLATFORM



Peckham Platform encourages local artists and the Copeland and South London Galleries are also handy places for contemporary art. Then, when you want to express yourself in a different kind of way, head to Four Quarters and get stuck into some retro gaming.

The Peckham Festival is firmly established on the cultural calendar. An annual exhibition of what's happening and a great opportunity for local talent to showcase new work. The Music festival also has a focus on home-grown creativity and takes place across several Peckham venues.

PECKHAM PASSION



BRIDGE
THE GEF
PECKHAM LEVELS



The BMX Track London



Burgess Park



Tuke School



PureGym London Camberwell

Cronin Street

Commercial Way

TO ELEPHANT AND CASTLE

Camberwell Road

B217

B214

B215

B216

Old Kent Road

Peckham Park Road

A2

Bridgehouse Meadows

New Cross Road

Hong Kong City

A2

Lit Shisha Bar & Restaurant

The Rosemary Organic Hungarian

NEW CROSS GATE

TO NEW CROSS, DEPTFORD & BLACKHEATH

CAMBERWELL

South London Gallery

Southampton Way

Mountview

Peckham Pulse Leisure Centre

Peckham Hill Street

Naifs

Peckham High Street

Peckham Cellars

QUEENS ROAD PECKHAM

Blackbird Bakery

A202

The Rosemary Organic Hungarian

TO BRIXTON

A2217

King's College Hospital

A215

Maudsley Hospital

DENMARK HILL

A215

Ruskin Park

A2216

Green Dale Fields

JAGS Sports Club

Warwick Gardens

Rye Lane Market

PECKHAM RYE

Hannah Barry Gallery

Rye Lane

Copeland Park & Bussey Building

Peckham Library

Peckham Bazaar

The Montpelier

Artusi

Mr Bao

The Angel Oak

Old Nun's Head

Kudu Grill

The Gowlett Arms

Bellenden Road

Peckham Rye

Peckham Rye Park & Common

A2214

A2216

A2214

A2216

A2214

A2216

A2214

A2216

A2214

A2216

PECKHAM

St Thomas the Apostle School and Sixth Form College

Golden Anchor

Skehans

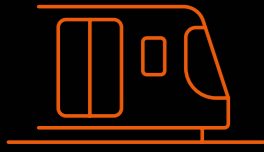
Telegraph Hill Park

Nunhead Cemetery

BROCKLEY

TO DULWICH

Map not to scale



OVERGROUND

BIKE

THAMESLINK

BUS

FROM
PECKHAM RYE

FROM
THE BRIDGE

FROM
PECKHAM RYE

FROM
EAST SURREY GROVE

Denmark Hill
3 mins

Peckham Rye Station
5 mins

Elephant & Castle
10 mins

Elephant & Castle
24 mins (nos. 63/363/136)

Canada Water
10 mins

Burgess Park
7 mins

London Bridge
10 mins

Tower Bridge
32 mins (nos. 78/343/63/636)

Shadwell
15 mins

London Bridge
10 mins

Blackfriars
15 mins

South Bank
35 mins (nos. 172/63/363)

Clapham Junction
16 mins

Elephant & Castle
14 mins

Farringdon
19 mins

Camberwell Green
15 mins (nos. 36/12/345/171)

Whitechapel
18 mins

Dulwich Village
16 mins

King's Cross St Pancras*
24 mins

East Dulwich
Picturehouse and Café
32 mins (nos. 197, 12, 37)

Canary Wharf
30 mins

Sevenoaks
54 mins

Horniman Museum
35 mins (nos. 363/197)

Brockwell Lido
40 mins (nos. 37/345)

GO

GO

GO

Whether you work in the City, Docklands or West End, it's an easy commute from Peckham Rye. You can be in London Bridge in 10 minutes by train and connect with the tube network for destinations right across London.

Being so close to the centre, Peckham is a great place to live if you cycle to work and the network of cycle routes is improving all the time. There are great bus services too, with routes into the centre and across South London.

When you feel the urge to escape the city for a bit, Peckham is close to the A2, linking you to the Kent countryside and resorts of the south coast, as well as the national motorway network. Heading further afield? Then simply take the Eurostar from St Pancras International or fly from London City Airport. The Bridge puts you in the heart of London.

Overground times from TFL journey planner

Cycle times from google maps

Train times from national rail journey planner

* Changing at Blackfriars

Journey times are approximate and may vary depending on bus routes and times of day. Source: Citymapper



CLEAN LINES





GENERAL

- White internal doors
- Wool mix carpet: in all bedrooms
- Wardrobes to master bedroom
- White skirtings and architraves
- Engineered wood flooring to kitchen, living and dining area and hallways
- Door entry system in apartments

KITCHEN

- Contemporary Dove Grey kitchen units with under unit lighting
- Grey Oak block effect worktop with matching upstands and stainless steel splashback
- Stainless steel sink
- Contemporary chrome mixer tap
- Integrated fridge/freezer
- Electrolux electric oven
- Electrolux ceramic hob
- Electrolux chimney extractor hood
- Electrolux integrated dishwasher

BATHROOM

- Ceramic wall tiles
- Ceramic floor tiles to all bath/shower rooms
- Thermostatic mixer, low-flow shower head
- Frameless Toughened glass shower screen
- Contemporary white sanitaryware
- Grohe chrome fittings
- Chrome ladder style heated towel rail
- Ventilation system

HEATING & ELECTRICAL

- Beko washer/dryer located in hallway cupboard*
- Radiators
- Multimedia Plate to living area
- Communal aerials/dishes on the roof, so residents can sign up to Sky or utilise Freeview for terrestrial channels
- Low energy downlights in kitchen, bathrooms and living room
- Mains powered wired doorbell
- Smoke alarm

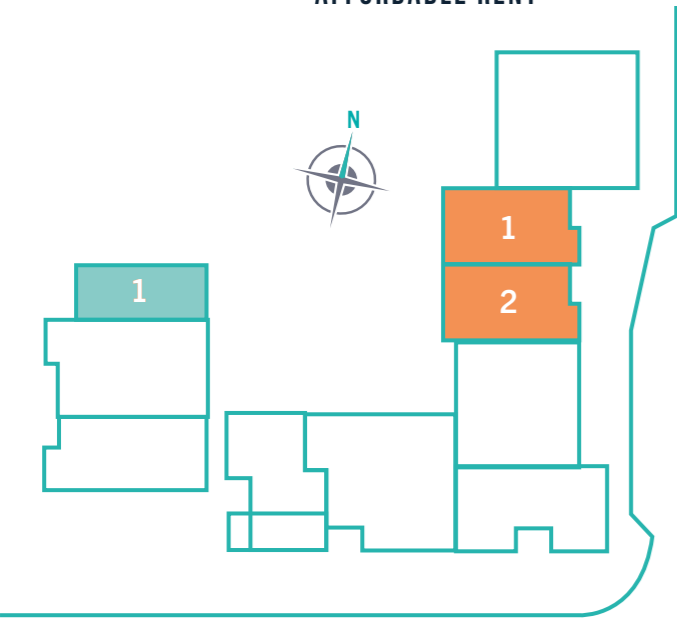


SITE PLAN

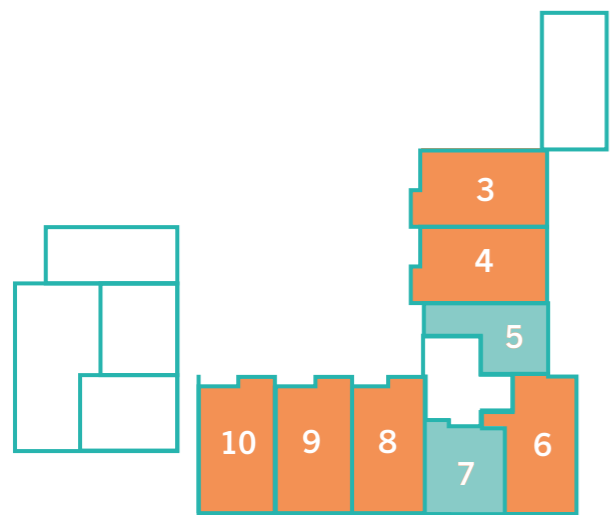


KEY

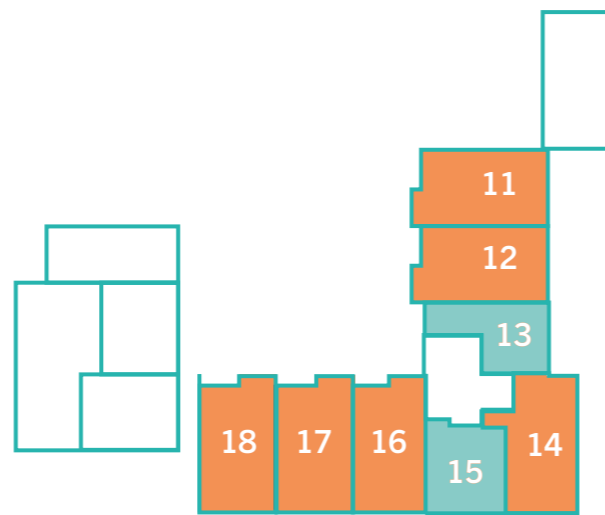
- ONE BEDROOM APARTMENTS
- TWO BEDROOM APARTMENTS
- SHARED OWNERSHIP
- AFFORDABLE RENT
- SHARED OWNERSHIP & AFFORDABLE RENT



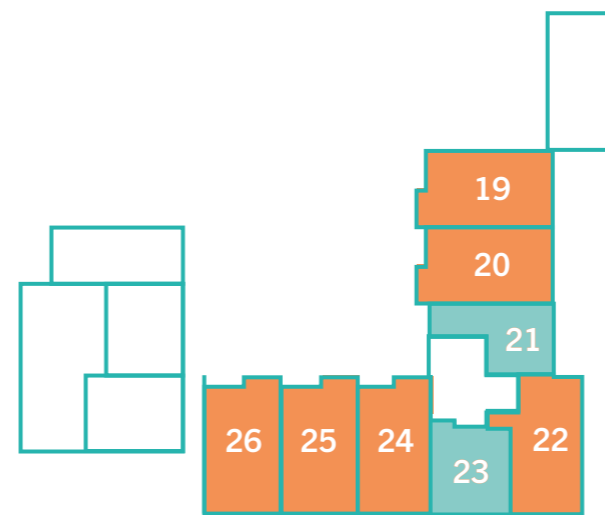
GROUND FLOOR



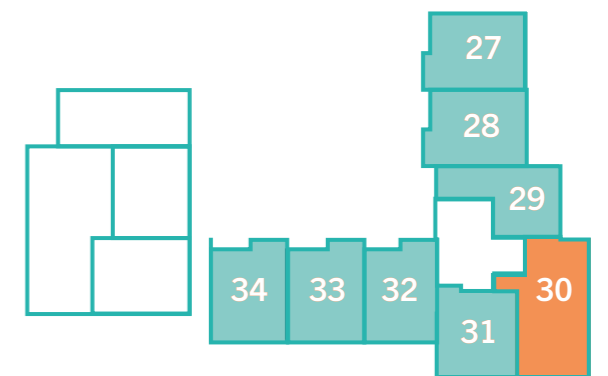
FIRST FLOOR



SECOND FLOOR

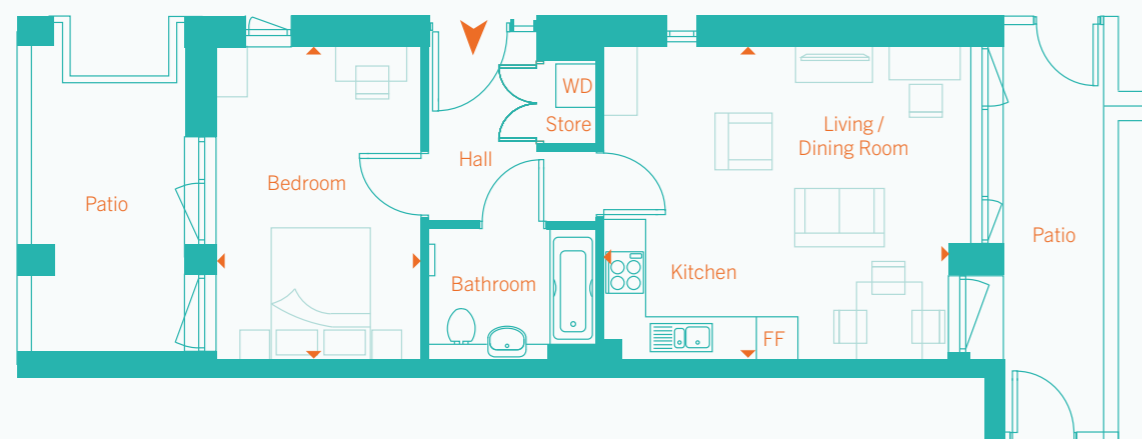


THIRD FLOOR

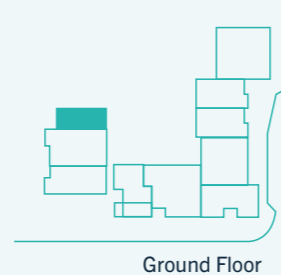


FOURTH FLOOR

TYPE F ONE BEDROOM APARTMENT RIDGEWAY HOUSE APARTMENT 1



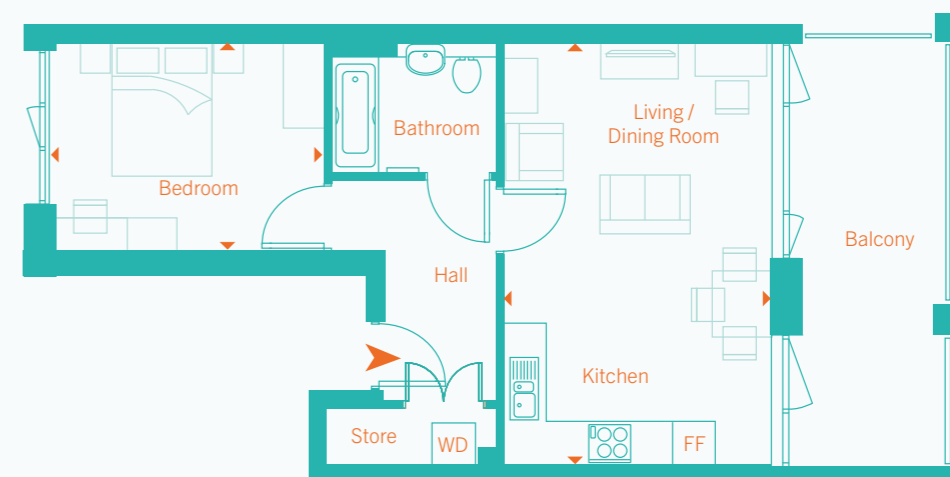
Living / Kitchen / Dining area	
5.1m x 4.6m	16.6ft x 15.1ft
Bedroom	
3.0m x 4.6m	9.8ft x 15.1ft
Total Area	
50.3 sq.m.	541.4 sq.ft



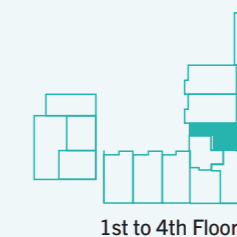
KEY
FF - Fridge/Freezer
WD - Washer/Dryer

Floor plans represent typical layouts of the design of the apartments and are not shown to scale. Plot specification, internal and external finishes, dimensions and differences to plots should be checked with the Sales Team before reservation. Southwark Council terms and conditions apply. All content within this document is indicative only. Southwark Council reserves the right to make any changes at any time. Please speak to a member of our Sales Team for up-to-date information when reserving your new home. Information is correct at the time of time of publication.

TYPE L ONE BEDROOM APARTMENT BRIDGETOWER HOUSE APARTMENTS 5 / 13 / 21 / 29



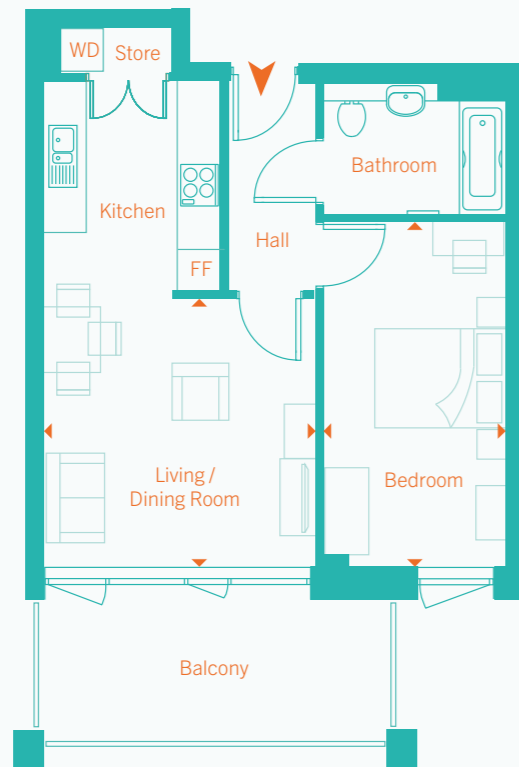
Living / Kitchen / Dining area	
3.9m x 6.2m	12.8ft x 20.3ft
Bedroom	
3.9m x 3.00m	12.9ft x 9.9ft
Total Area	
50.0 sq.m.	538.2 sq.ft



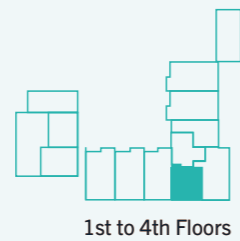
KEY
FF - Fridge/Freezer
WD - Washer/Dryer

Floor plans represent typical layouts of the design of the apartments and are not shown to scale. Plot specification, internal and external finishes, dimensions and differences to plots should be checked with the Sales Team before reservation. Southwark Council terms and conditions apply. All content within this document is indicative only. Southwark Council reserves the right to make any changes at any time. Please speak to a member of our Sales Team for up-to-date information when reserving your new home. Information is correct at the time of time of publication.

TYPE N ONE BEDROOM APARTMENT BRIDGETOWER HOUSE APARTMENTS 7 / 15 / 23 / 31



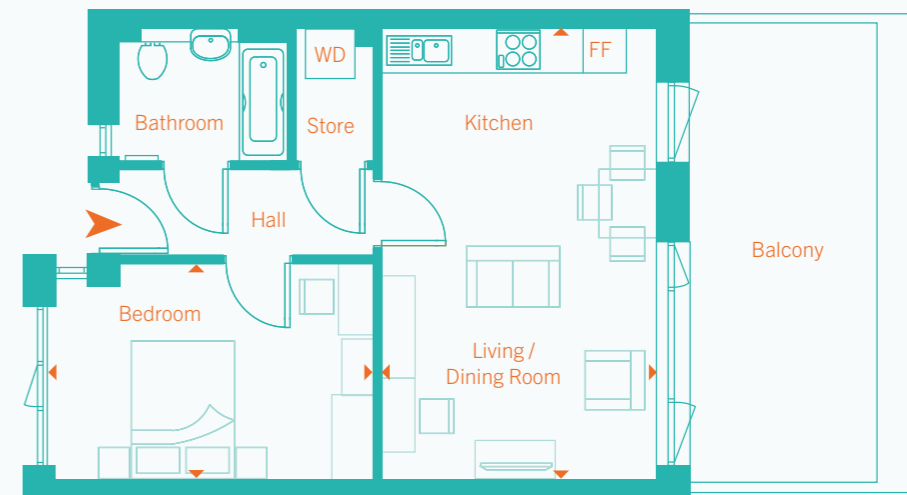
Living / Dining area	4.0m x 4.1m	13.2ft x 13.4ft
Bedroom	2.7m x 5.1m	8.8ft x 16.6ft
Total Area	50.2 sq.m.	540.3 sq.ft



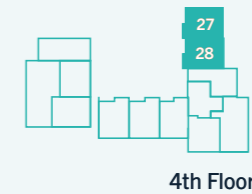
KEY
FF - Fridge/Freezer
WD - Washer/Dryer

Floor plans represent typical layouts of the design of the apartments and are not shown to scale. Plot specification, internal and external finishes, dimensions and differences to plots should be checked with the Sales Team before reservation. Southwark Council terms and conditions apply. All content within this document is indicative only. Southwark Council reserves the right to make any changes at any time. Please speak to a member of our Sales Team for up-to-date information when reserving your new home. Information is correct at the time of time of publication.

TYPE X ONE BEDROOM APARTMENT BRIDGETOWER HOUSE APARTMENTS 27 / 28



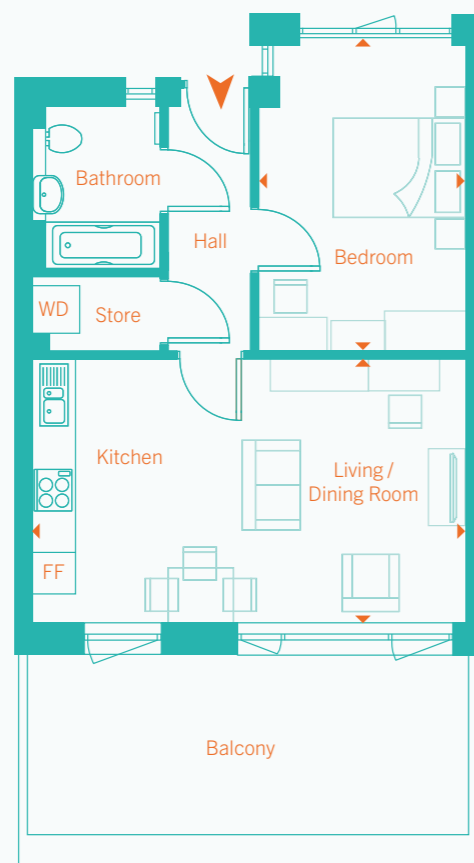
Living / Kitchen / Dining area	6.4m x 3.9m	21.0ft x 12.7ft
Bedroom	4.6m x 3.1m	15.0ft x 10.0ft
Total Area	50.7 sq.m.	545.7 sq.ft



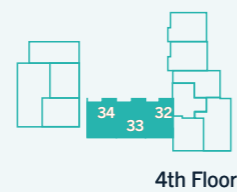
KEY
FF - Fridge/Freezer
WD - Washer/Dryer

Floor plans represent typical layouts of the design of the apartments and are not shown to scale. Plot specification, internal and external finishes, dimensions and differences to plots should be checked with the Sales Team before reservation. Southwark Council terms and conditions apply. All content within this document is indicative only. Southwark Council reserves the right to make any changes at any time. Please speak to a member of our Sales Team for up-to-date information when reserving your new home. Information is correct at the time of time of publication.

TYPE X(H) ONE BEDROOM APARTMENT BRIDGETOWER HOUSE APARTMENTS 32 / 33 / 34



Living / Kitchen / Dining area	
6.4m x 3.9m	21.0ft x 12.7ft
Bedroom	
4.6m x 3.1m	15.0ft x 10.0ft
Total Area	
50.7 sq.m.	545.7 sq.ft



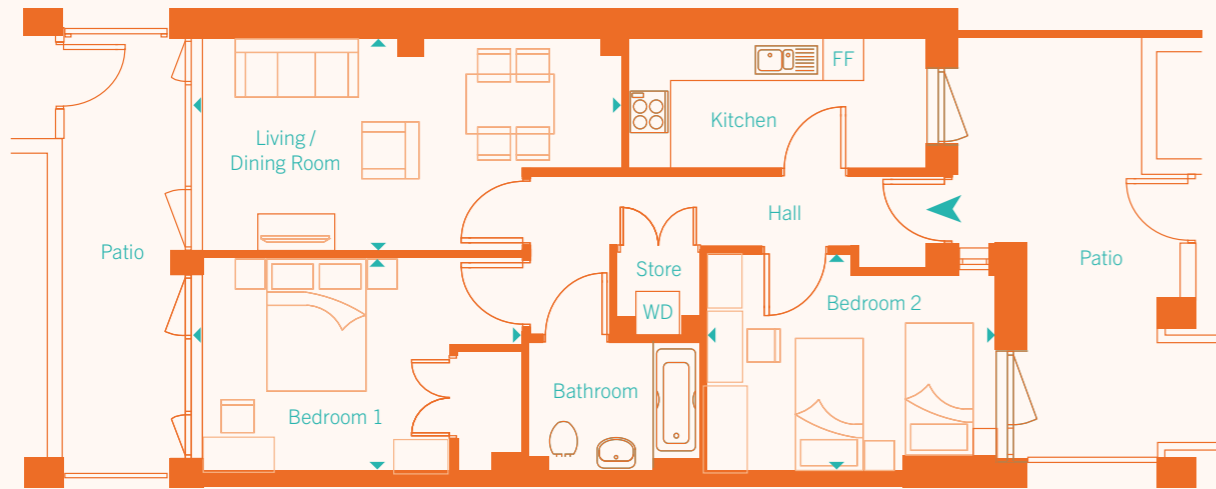
KEY
FF - Fridge/Freezer
WD - Washer/Dryer



TYPE A TWO BEDROOM APARTMENT

BRIDGETOWER HOUSE

APARTMENTS 1 / 2



Living / Dining Room

6.3m x 3.1m 20.6ft x 10.2ft

Bedroom 1

4.8m x 3.1m 15.8ft x 10.2ft

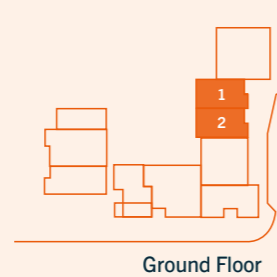
Bedroom 2

4.2m x 3.2m 13.9ft x 10.5ft

Total Area

Apt 1 70.4 sq.m. 757.8 sq.ft

Apt 2 70.2 sq.m. 755.6 sq.ft



KEY

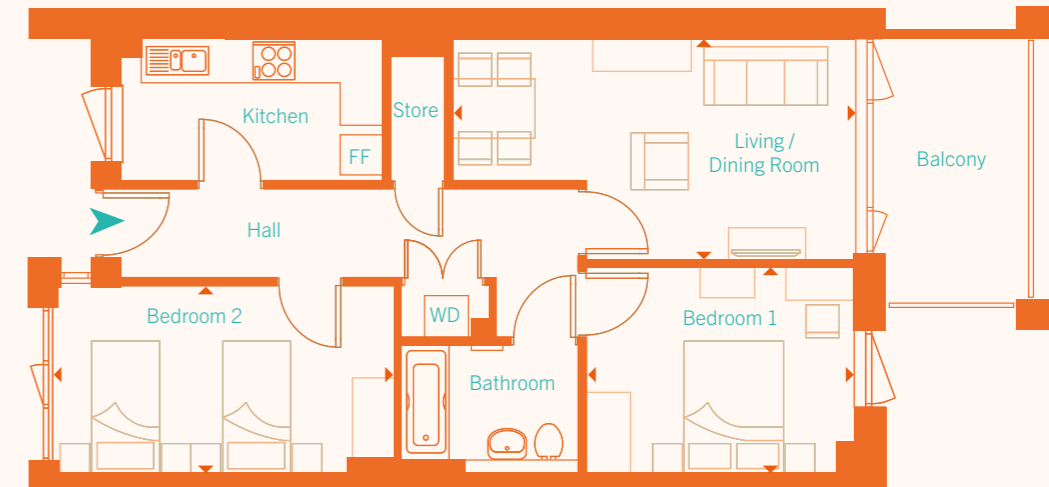
FF - Fridge/Freezer
WD - Washer/Dryer



TYPE K TWO BEDROOM APARTMENT

BRIDGETOWER HOUSE

APARTMENTS 3 / 4 / 11 / 12 / 19 / 20



Living / Dining Room

6.92m x 3.23m 22.7ft x 10.6ft

Bedroom 1

3.9m x 3.0m 12.7ft x 9.8ft

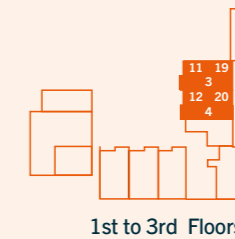
Bedroom 2

4.9m x 2.75m 16.1ft x 9.0ft

Total Area

Apts 3, 4, 11 70.9 sq.m. 763 sq.ft

Apts 12, 19, 20 70.6 sq.m. 759.9 sq.ft



KEY

FF - Fridge/Freezer
WD - Washer/Dryer



TYPE K(H) TWO BEDROOM APARTMENT

BRIDGETOWER HOUSE

APARTMENTS 8 / 9 / 10 / 16 / 17 / 18 / 24 / 25 / 26



Living / Dining Room

6.92m x 3.23m 22.7ft x 10.6ft

Bedroom 1

3.9m x 3.0m 12.7ft x 9.8ft

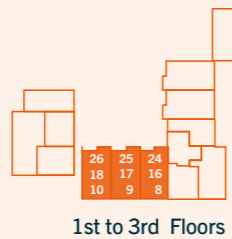
Bedroom 2

4.9m x 2.75m 16.1ft x 9.0ft

Total Area

Apts 8,9,16,17,24, 70.6 sq.m. 759.9 sq.ft

Apts 10,18,26 70.8 sq.m. 762 sq.ft



KEY

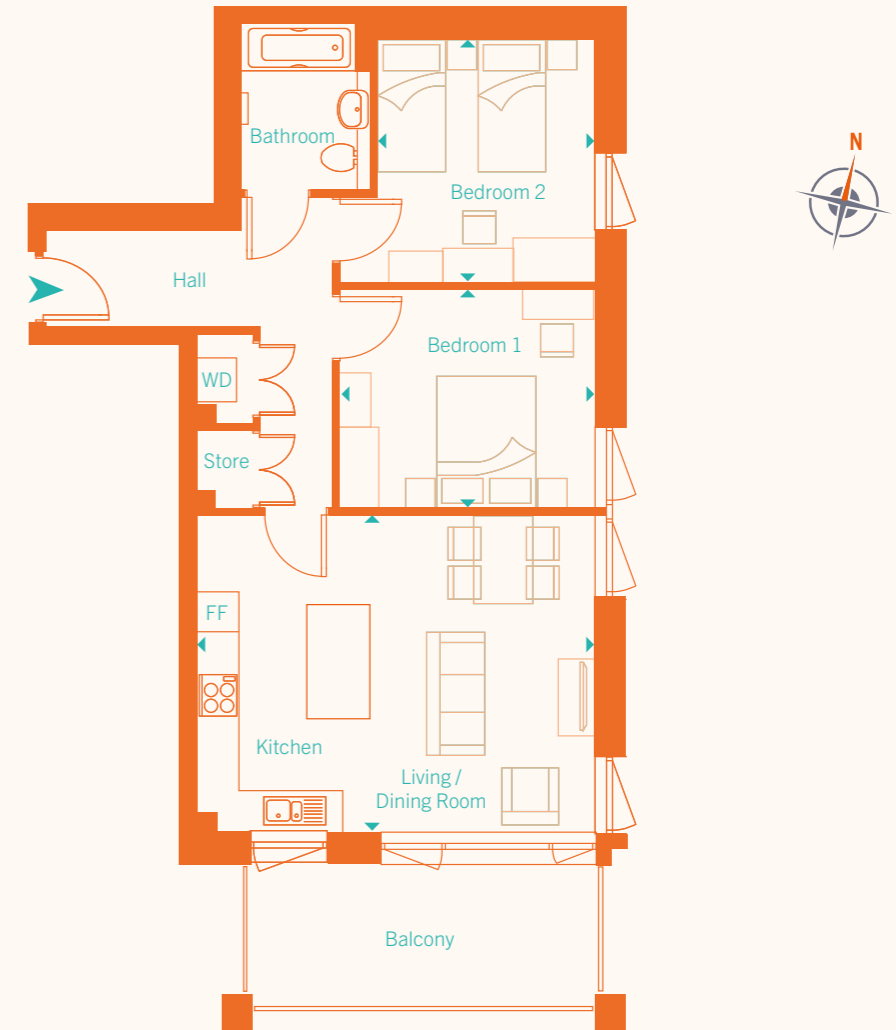
FF - Fridge/Freezer
WD - Washer/Dryer



TYPE M TWO BEDROOM APARTMENT

BRIDGETOWER HOUSE

APARTMENTS 6 / 14 / 22 / 30



Living / Kitchen / Dining area

5.9m x 4.7m 19.2ft x 15.3ft

Bedroom 1

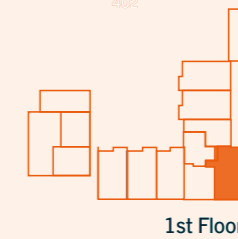
3.7m x 3.2m 12.3ft x 10.6ft

Bedroom 2

3.2m x 3.6m 10.5ft x 11.7ft

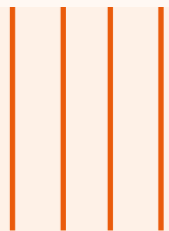
Total Area

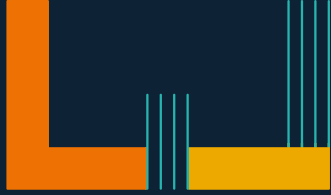
70.1 sq.m. 754.6 sq.ft



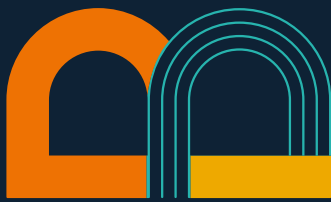
KEY

FF - Fridge/Freezer
WD - Washer/Dryer





PECKHAM SE15



ABOUT *Southwark* Council

At Southark Council we put residents at the heart of everything we do – and nowhere more so than when we build new homes. Thoughtful, contemporary designs, sustainable, energy efficient buildings and an abundance of green spaces ensure that we create desirable homes in one of London’s most vibrant, diverse and exciting boroughs. Our commitment to high design standards, executed by our experienced and capable project teams, provide assurance of quality, long-lasting homes that are economical to live in and reflect and enhance the character of our local neighbourhoods. We are proud to be one of the largest local authority homebuilders in the country, and we are proud of each and every one of these homes which are vital foundations of our communities.

THE BRIDGE
COMMERCIAL WAY
PECKHAM
LONDON SE15 6PX

020 7539 3745
REDLOFTPROPERTY.CO.UK/SOUTHWARK

