

Prices
from
£135,625

Hazel End, Bishops Stortford

Apple Rise, Bishops Stortford, Hertfordshire, CM23 1GD

A brand new development of 2, 3 & 4 bedroom houses

 **ParadigmLiving**

£ Prices from £135,625 (35% share)

% Share available 35%-75%

🏠 2, 3 & 4 bedroom houses



A brand new development with a collection of 2, 3 & 4 bedroom homes. Located on the doorstep is a 16 Acre country park with green open space. A new primary school and nursery located on the outskirts of the Development.



Hazel End KEY FEATURES

Bathroom suite and
thermostatic shower

Carpet throughout living areas &
Bedrooms

Tiled flooring in kitchen, vinyl
flooring in the bathroom
hallway & downstairs toilet

Gas central heating

Allocated parking

Fitted kitchen with integrated
oven and hob

Integrated washing machine and
fridge freezer

These particulars do not constitute any part of an offer or contract. Any intended purchasers must satisfy themselves as to the correctness of each of the statements contained in these particulars. All floor layouts may be subject to changes. The dimensions given on the plan are subject to minor variations intended for guidance only and are not to be used for carpets, appliances or items of furniture.



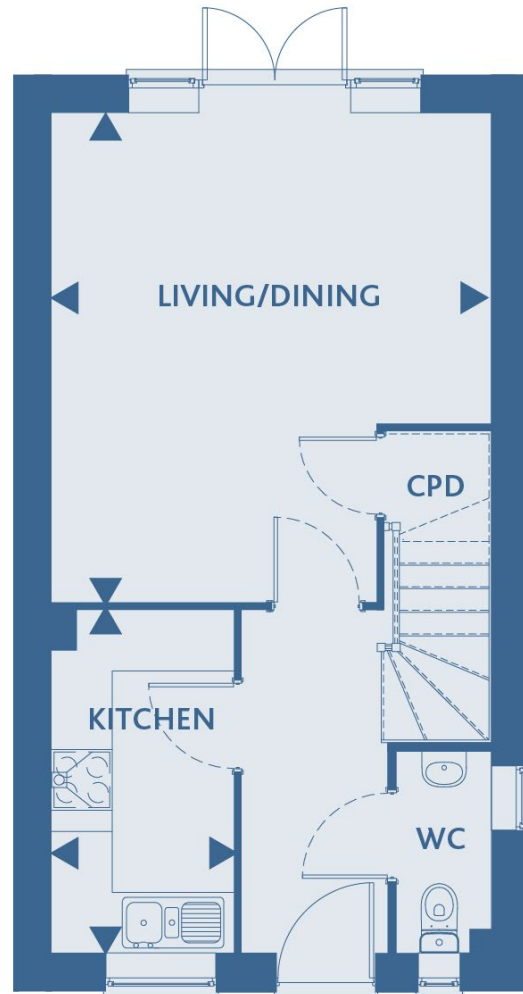
2 Bedroom House Plot 342

KITCHEN
11'2" x 6'0" 3.42m x 1.84m

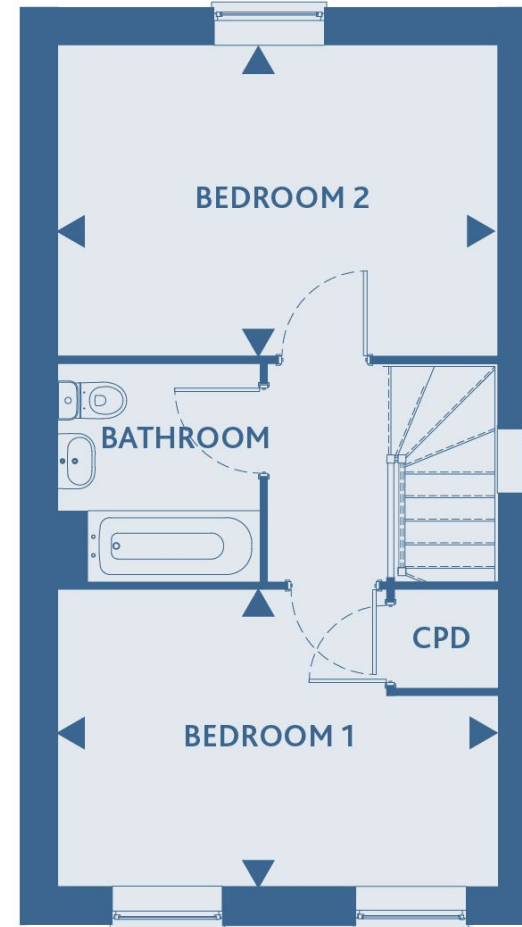
LIVING/DINING
15'11" x 14'4" 4.87m x 4.39m

BEDROOM 1
14'4" x 9'8" 4.39m x 2.96m

BEDROOM 2
14'4" x 10'2" 4.39m x 3.11m



GROUND FLOOR



FIRST FLOOR

These particulars do not constitute any part of an offer or contract. Any intended purchasers must satisfy themselves as to the correctness of each of the statements contained in these particulars. All floor layouts may be subject to changes. The dimensions given on the plan are subject to minor variations intended for guidance only and are not to be used for carpets, appliances or items of furniture.





3 Bedroom House Plots 343

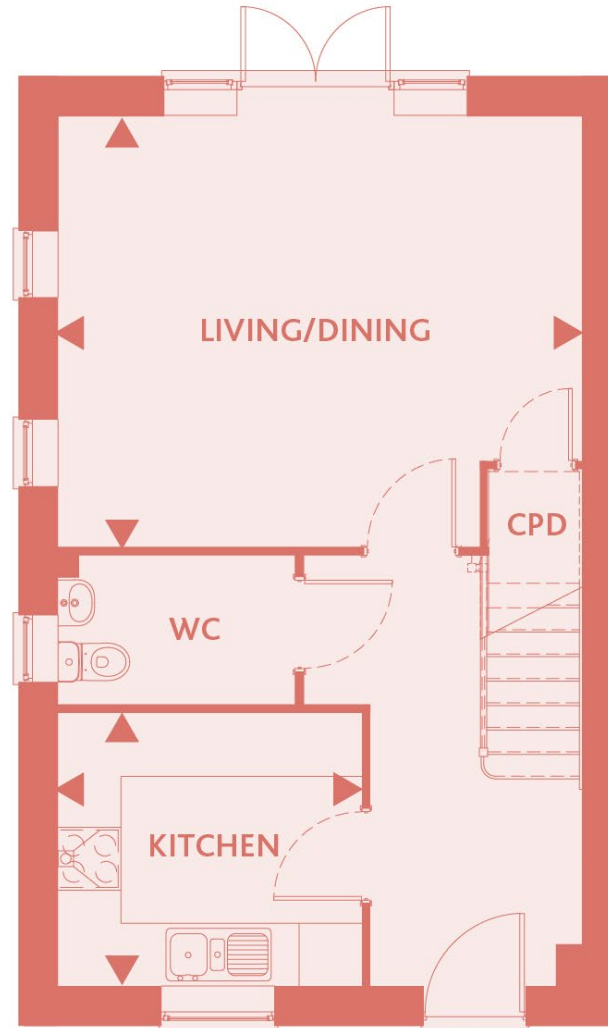
KITCHEN
9'7" x 8'8" 2.94m x 2.64m

LIVING/DINING
16'6" x 13'8" 5.05m x 4.17m

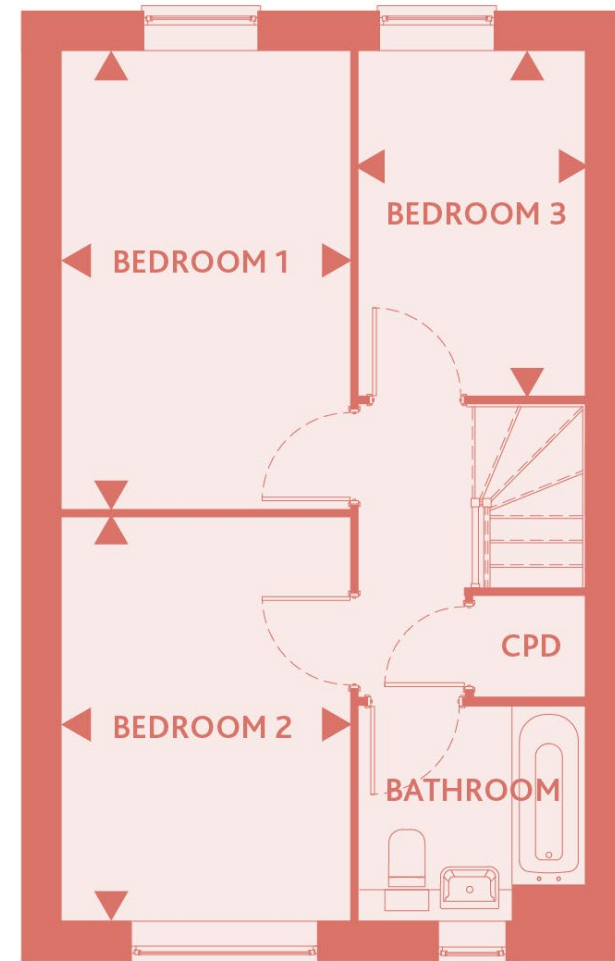
BEDROOM 1
14'3" x 9'1" 4.35m x 2.79m

BEDROOM 2
12'9" x 9'1" 3.89m x 2.79m

BEDROOM 3
10'11" x 7'2" 3.33m x 2.20m



GROUND FLOOR



FIRST FLOOR

These particulars do not constitute any part of an offer or contract. Any intended purchasers must satisfy themselves as to the correctness of each of the statements contained in these particulars. All floor layouts maybe subject to changes. The dimensions given on the plan are subject to minor variations intended for guidance only and are not be used for carpets, appliances or items of furniture.





3 Bedroom House Plots 346, 347 & 348

KITCHEN
9'7" x 8'7" 2.94m x 2.64m

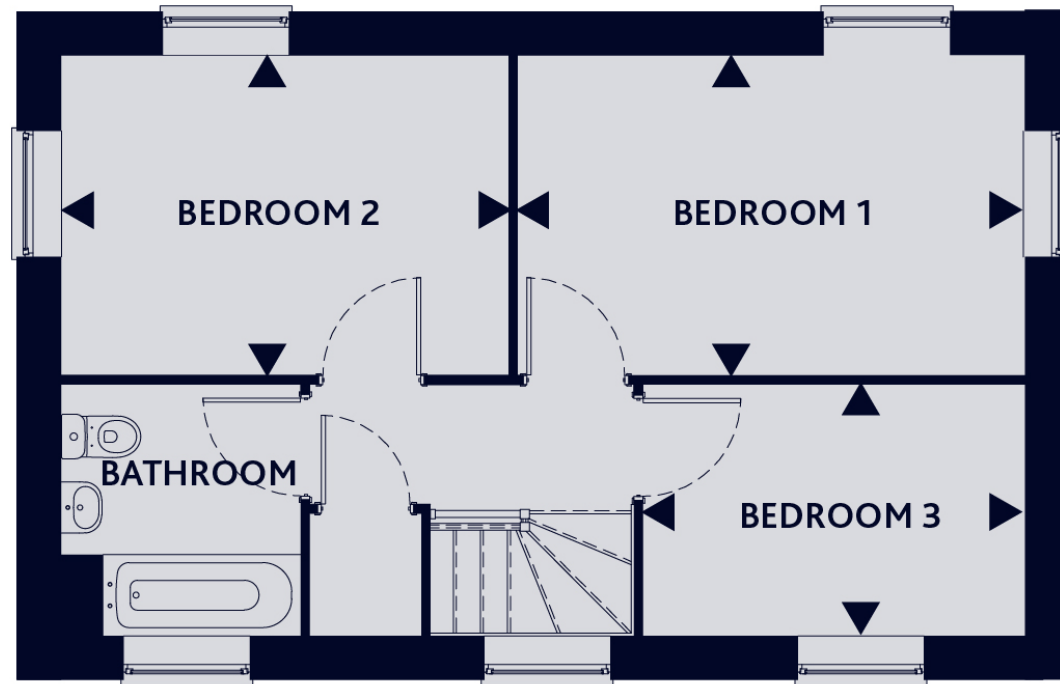
LIVING/DINING
16'6" x 13'6" 5.05m x 4.13m

BEDROOM 1
14'5" x 9'1" 4.41m x 2.79m

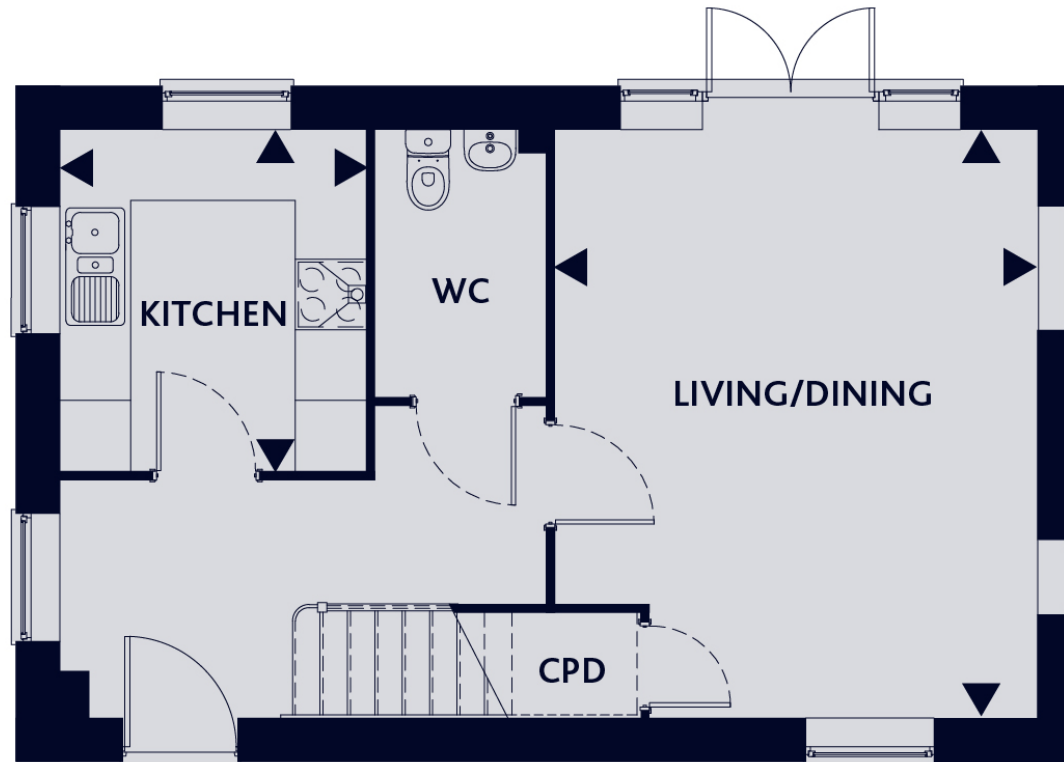
BEDROOM 2
12'9" x 9'1" 3.89m x 2.79m

BEDROOM 3
7'2" x 10'11" 2.20m x 3.33m

These particulars do not constitute any part of an offer or contract. Any intended purchasers must satisfy themselves as to the correctness of each of the statements contained in these particulars. All floor layouts may be subject to changes. The dimensions given on the plan are subject to minor variations intended for guidance only and are not used for carpets, appliances or items of furniture.



FIRST FLOOR



No window to plots
347 & 348

GROUND FLOOR



4 Bedroom House

Plots 344, 345* & 349

(* handed)

KITCHEN
8'9" x 11'2" 2.68m x 3.42m

LIVING/DINING
22'0" x 18'7" 6.73m x 5.68m

BEDROOM 1
12'6" x 10'7" 3.83m x 3.24m

BEDROOM 2
13'6" x 10'0" 4.12m x 3.05m

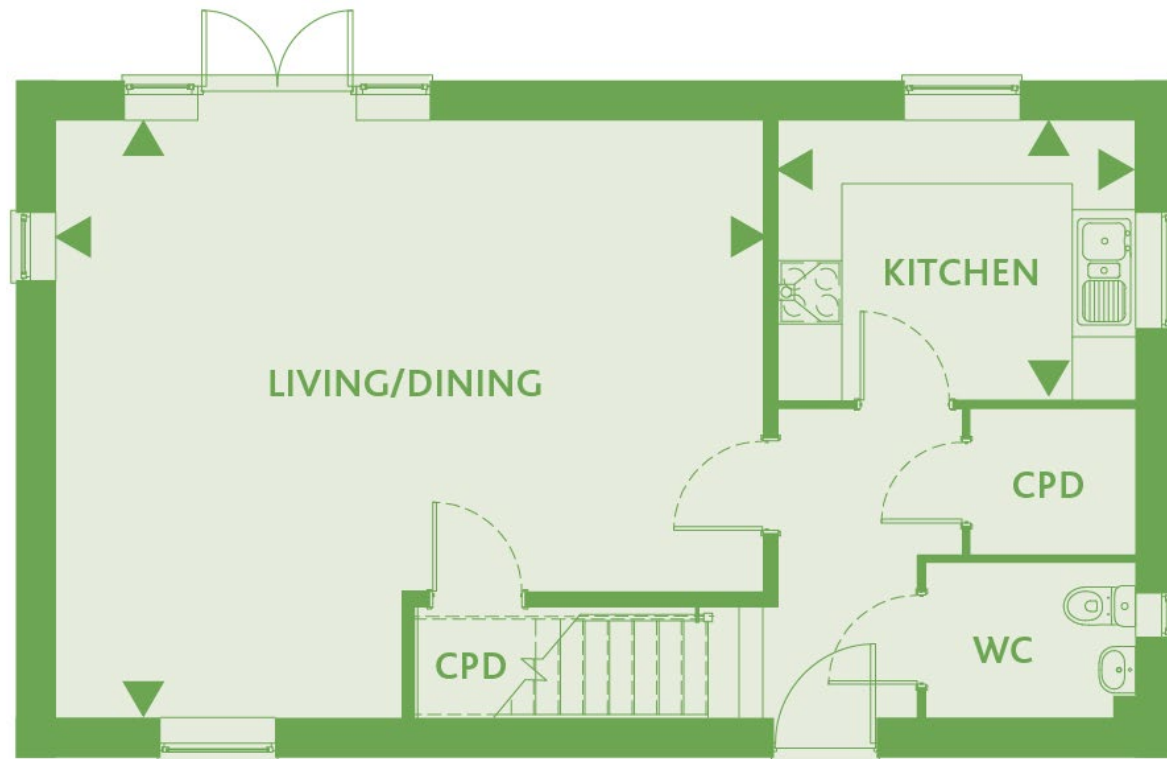
BEDROOM 3
13'6" x 8'5" 4.12m x 2.58m

BEDROOM 4
8'7" x 7'6" 2.63m x 2.29m

These particulars do not constitute any part of an offer or contract. Any intended purchasers must satisfy themselves as to the correctness of each of the statements contained in these particulars. All floor layouts may be subject to changes. The dimensions given on the plan are subject to minor variations intended for guidance only and are not used for carpets, appliances or items of furniture.



FIRST FLOOR



GROUND FLOOR



SITE PLAN



These particulars do not constitute any part of an offer or contract. Any intended purchasers must satisfy themselves as to the correctness of each of the statements contained in these particulars. All floor layouts may be subject to changes. The dimensions given on the plan are subject to minor variations intended for guidance only and are not to be used for carpets, appliances or items of furniture.

////// ParadigmLiving

For more information

0300 303 8046

www.paradigmliving.co.uk

These particulars do not constitute any part of an offer or contract. Any intended purchasers must satisfy themselves as to the correctness of each of the statements contained in these particulars. All floor layouts maybe subject to changes. The dimensions given on the plan are subject to minor variations intended for guidance only and are not be used for carpets, appliances or items of furniture.

