



homemade
homes by accent



Computer generated image is illustrative only

Whittlesey Green

WHITTLESEY

A stylish collection of shared ownership homes for sale



Your place at Whittlesey Green

Enjoy the best of town, city and countryside

Whittlesey Green is your chance to have it all. These brand-new, spacious homes sit on the fringes of Whittlesey. In just a 3-minute drive, you can be in the centre of this picturesque market town or out in the open countryside. And in 20 minutes, you can be in Peterborough's vibrant city centre. With excellent transport links, you're also within easy reach of several other towns and cities, including London, Cambridge, King's Lynn, Ely and Spalding.

We have 65 thoughtfully designed homes available to buy on a more affordable, shared ownership basis at Whittlesey Green (see page 33 for details). With 13 two-bed, 33 three-bed and 19 four-bed houses for sale, there are plenty of options – whether you're buying as a small or growing family or a couple. The architecture blends with traditional local properties, and the layouts are modern and flexible, with neutral finishes ready for you to make your home your own.


Whittlesey Green is a convenient stroll from the town's excellent amenities, including independent bars, restaurants, cafés and stores, as well as health, leisure and educational facilities. It's set just off the A605, which whisks you out of town or straight through it and on to Peterborough. Major roads such as the A1 and A47 are also close by. And Whittlesea train station is only a mile away, with trains taking 9 minutes to Peterborough, where you can get connecting trains to Cambridge, London and more.

Ashline Lock, Whittlesey



Ely Cathedral





A beautiful home,
shaped around you



Get settled with shared ownership at Whittlesey Green

The affordable way to buy the home you've dreamed of

Everyone should have the opportunity to find a home they love, and shared ownership could be the answer for you. It's a great way to get on the property ladder and offers a real alternative to renting.

Homes at Ravensden Park are available to buy using the government's shared ownership scheme. It's another way to buy your home where you buy a percentage and pay rent on the rest. Homemade Homes own part of it - but you're living there, you decorate it, and you decide when to sell. Buying a percentage means you'll need a smaller deposit and a smaller mortgage. You can start by buying a share of between 25% to 75%. Once you've moved in, you can carry on buying more shares - if you choose to and can afford it - until you own your home 100%.

We offer an extensive range of shared ownership homes across the country, and have helped families, couples and people buying alone to find the right home for them. From apartments to detached houses, from Surrey to Yorkshire, we can help you find what you're looking for.

Visit homemadehomes.com/information/ or speak to our sales team to find out more about shared ownership.



Perfectly positioned in the Cambridgeshire countryside

Whittlesey puts everything you need within a walk, a cycle or a quick drive



Thoughtfully designed, energy-efficient homes with high-quality finishes



A historic town centre with a butcher, bakeries, post office, weekly market and more



Private gardens and car parking for every home



A 2-minute drive to Aldi and a 4-minute drive to Co-op and the post office



Three primary schools and one secondary school – all with good Ofsted ratings



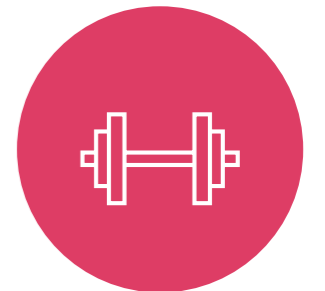
Countryside walks meandering by the river and through meadows and nature reserves



Several good quality, independent restaurants, cafés and pubs



A 20-minute drive to Peterborough and March and a 27-minute drive to Wisbech



Lots of sports and leisure facilities in town and within easy reach in Peterborough

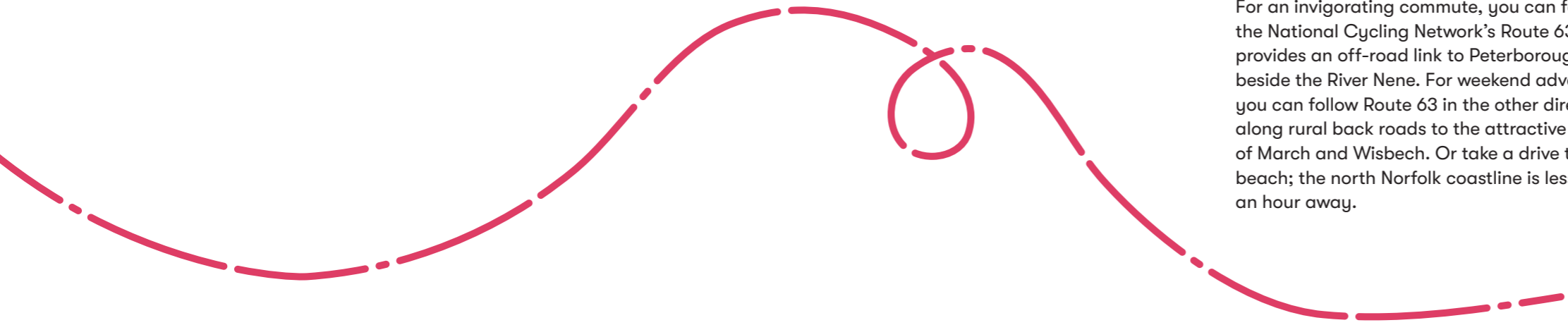
Travel times are approximate. Source, nationalrail.co.uk and google.com/maps

Welcome to charming to Whittlesey

Traditional architecture sets the scene for modern living

A pretty market town, Whittlesey sits at the gateway to the sweeping Fens. Its winding streets feature architecture spanning several centuries. From timber-framed houses with thatched roofs to majestic Georgian properties in the marketplace, which still hosts a weekly market selling local produce.

For an invigorating commute, you can follow the National Cycling Network's Route 63, which provides an off-road link to Peterborough beside the River Nene. For weekend adventures, you can follow Route 63 in the other direction, along rural back roads to the attractive towns of March and Wisbech. Or take a drive to the beach; the north Norfolk coastline is less than an hour away.



Images from left to right:
Flag Fen Archaeology Park
Peterborough Cathedral
River Nene at March
Wisbech



Nearby Peterborough combines a strong heritage with a cosmopolitan feel. It boasts all manner of entertainments, from underground nightclubs to upscale boutiques and from quirky theatres to fine-dining restaurants. You can swim outdoors at the lido, see hidden treasures at Flag Fen Archaeology Park and enjoy events ranging from comedy to motorsport at The East of England Arena.

March, a 20-minute drive away, is a lovely place to watch boats cruising the Fenland waterways from a riverside inn. You can be in Wisbech, capital of the Fens and renowned for its Georgian architecture, in 27 minutes and iconic Cambridge is just an hour's drive away.

Everything you need within easy reach



Sports

Manor Leisure Centre boasts a gym, a swimming pool and a soft play centre to keep all the family active. It also offers a variety of classes, including indoor cycling, body combat, aqua aerobics, yoga and pilates. And it's home to Whittlesey Table Tennis Club.

Manor Leisure Centre – 1.2 miles



Great outdoors

It's easy to enjoy an outdoor life with nature reserves, parks, open countryside and the River Nene so nearby. You can hunt fossils at Kings Dyke Nature Reserve, fish at Decoy Lakes and go open water swimming at Ferry Meadows.

Lattersey Nature Reserve – 1.1 miles

Culture

Whittlesey Museum holds a children's club focusing on a different topic each month. It also has close associations with the Whittlesey Mud Walls Group, which work to protect the unique mud walls found in Whittlesey and Eastrea.

Whittlesey Museum – 1.2 miles



Shopping

With an Aldi a 2-minute drive from Whittlesey Green, the weekly shop is easy. Whittlesey also boasts independent shops, convenience stores and a post office. And Peterborough's city centre is just a 20-minute drive away, including Queensgate Shopping Centre – home to more than 100 stores.

Aldi – 0.4 miles



Eat & drink

Whether you're seeking a spot for a quiet coffee, somewhere to celebrate or a child-friendly lunch venue, there are lots of options in Whittlesey. Including the nearby Straw Bear pub with a welcoming atmosphere and a large, south-facing garden.

The Straw Bear – 0.5 miles



Family

Alderman Jacobs Primary School is just a 12-minute walk from Whittlesey Green, and Sir Harry Smith Community College (a secondary school) is a 15-minute walk. Both have good Ofsted ratings. The town also offers lots for kids to do – from Fenland Aqua Park to junior football.

Fenland Aqua Park – 0.7 miles

Travel times are approximate. Source, nationalrail.co.uk and google.com/maps

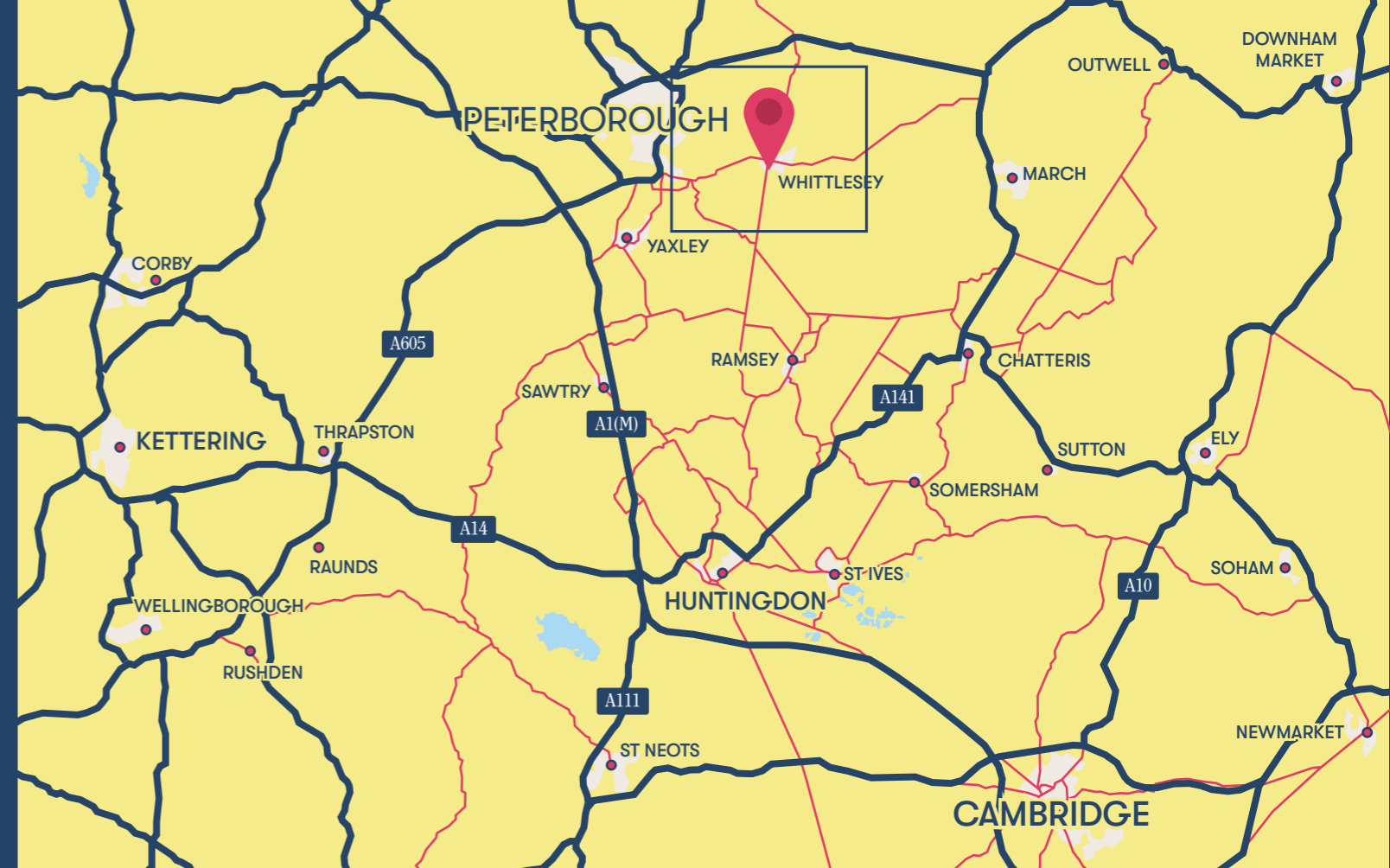


Where travel is easy

Live on the edge of town with fast links to the city and countryside

Whittlesey Green has great connections. Its close proximity to the A605, A1 and A47 makes for speedy commuting to Peterborough, many of the region's other towns and cities and out to rural areas. There's a bus stop a 12-minute walk away, with routes to Peterborough, Estrea, March and more. Whittlesea train station is just a mile away with fast routes to Peterborough and beyond. And when you want to jet abroad, London Luton and Stansted airports are both around an 80-minute drive away.

- | | |
|--------------------------------|--|
| 1. Aldi | 13. Kings Dyke Nature Reserve |
| 2. Co-op | 14. Decoy Lakes |
| 3. Whittlesey Post Office | 15. Crown Lakes Country Park |
| 4. Ivy Leaf | 16. Lattersey Nature Reserve |
| 5. Sonaragon Tandoori | 17. RSPB Nene Washes |
| 6. The Boat Inn | 18. Ferry Meadows |
| 7. The Straw Bear | 19. Alderman Jacobs Primary School |
| 8. Manor Leisure Centre | 20. Sir Harry Smith Community College |
| 9. Whittlesey Athletic FC | 21. New Road Primary & Nursery School |
| 10. Whittlesey Town Bowls Club | 22. Park Lane Primary & Nursery School |
| 11. Whittlesey Museum | 23. Roman Close playground |
| 12. Fenland Aqua Park | 24. New Queen Street Surgery |



By car from Whittlesey Green

Peterborough	20 minutes
March	20 minutes
Chatteris	26 minutes
Wisbech	27 minutes
Spalding	37 minutes
Huntingdon	37 minutes
Ely	42 minutes
Kings Lynn	46 minutes
Cambridge	1hr
Snettisham	1hr
Newmarket	1hr 3 mins
Northampton	1hr 8 mins
London Luton Airport	1hr 20 mins



By train from Wittlesea

Peterborough	9 minutes
March	11 minutes
Ely	32 minutes
Cambridge	1hr 7 minutes (1 Change)
London Kings Cross	1hr 9 mins (1 Change)
Leeds	1hr 46 mins (1 Change)

[Sources: *google.com/maps. Times shown are approximate and subject to traffic. **thetrainline.com. Times shown are for one of the fastest travel times – average journeys may be longer.]



Whittlesey Green Development Layout



Shared Ownership 2 Bed Houses

 Coot

Shared Ownership 3 Bed Houses

-  Dunlin
-  Mandarin
-  Turnstone
-  Kittiwake

Shared Ownership 4 Bed Houses

-  Lapwing
-  Sandpiper
-  Moorhen
-  Heron
-  Avocet
-  Knot

Other homes for sale or rent

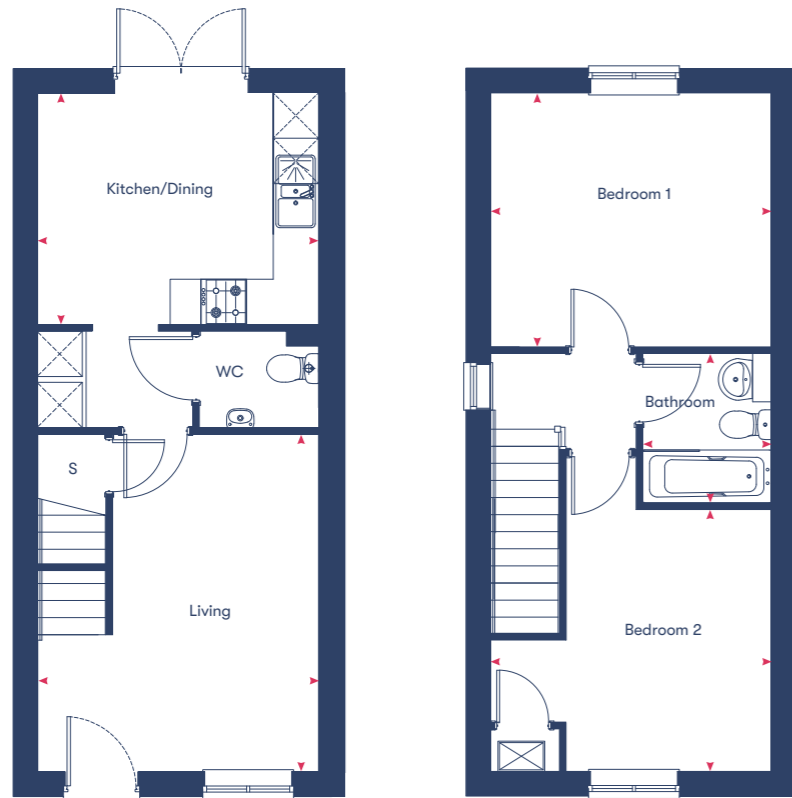




Coot

2 bedroom houses

Plots 615, 616*, 617*, 618, 619*



Ground Floor

First Floor

Kitchen/Dining	3.09m x 3.76m
Living	4.50m x 3.76m
Bedroom 1	3.39m x 3.76m
Bedroom 2	3.49m x 3.76m
Bathroom	2m x 1.72m
68.0m²	

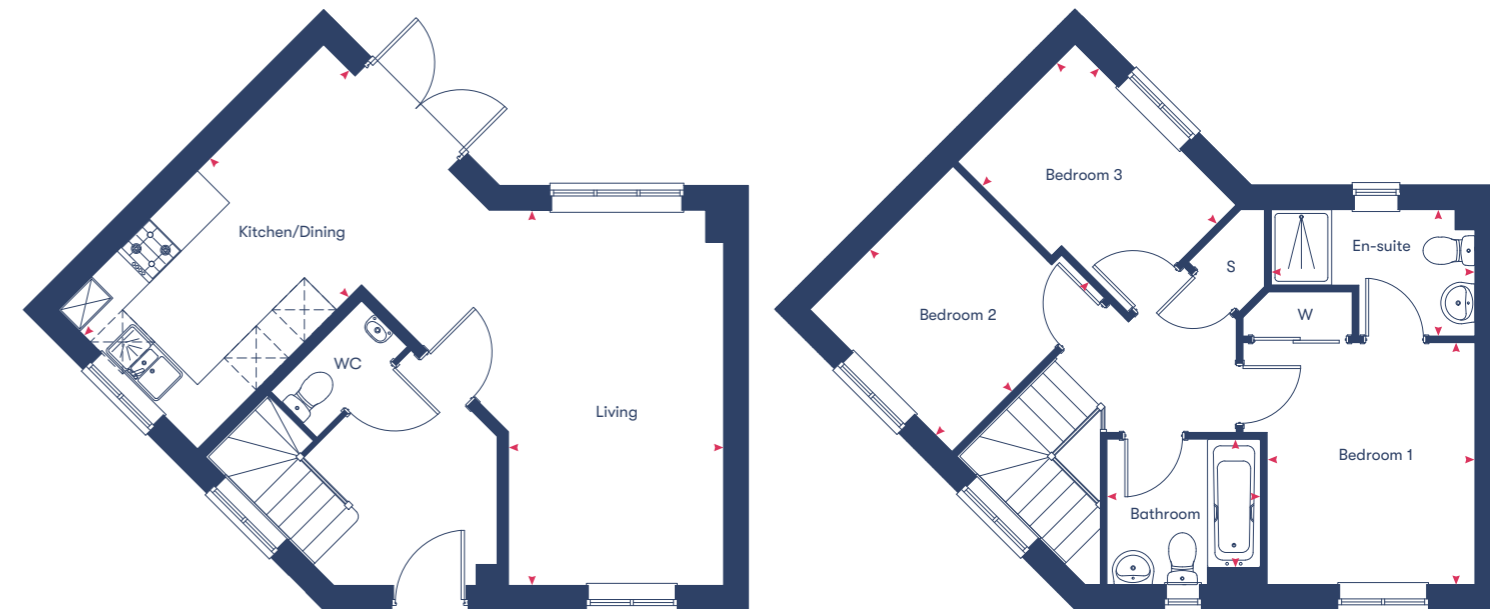
*Plots marked with an asterisk are mirrored versions of the floor plan shown.

Disclaimer: Room dimensions if shown are subject to change and are for guidance only. Whilst we endeavour to make our property details accurate and reliable these particulars are set out as a general outline only for the guidance of intended purchasers or lessees and do not constitute as a full or part offer or contract. Other details are given without responsibility and intending purchasers or tenants should not rely on them as statements or representations of fact but must satisfy themselves by inspection or otherwise as to the correctness of them. The purchaser is advised to obtain verification from their Solicitor or Surveyor to their own satisfaction.

Dunlin

3 bedroom houses

Plots 611*, 622



Ground Floor

First Floor

Kitchen/Dining	5.01m x 2.98m
Living	5.01m x 2.98m
Bedroom 1	3.23m x 2.73m
En-suite	1.71m x 2.73m
Bedroom 2	2.71m x 2.69m
Bedroom 3	2.23m x 2.98m
Bathroom	2.02m x 2.05m
83.1m²	

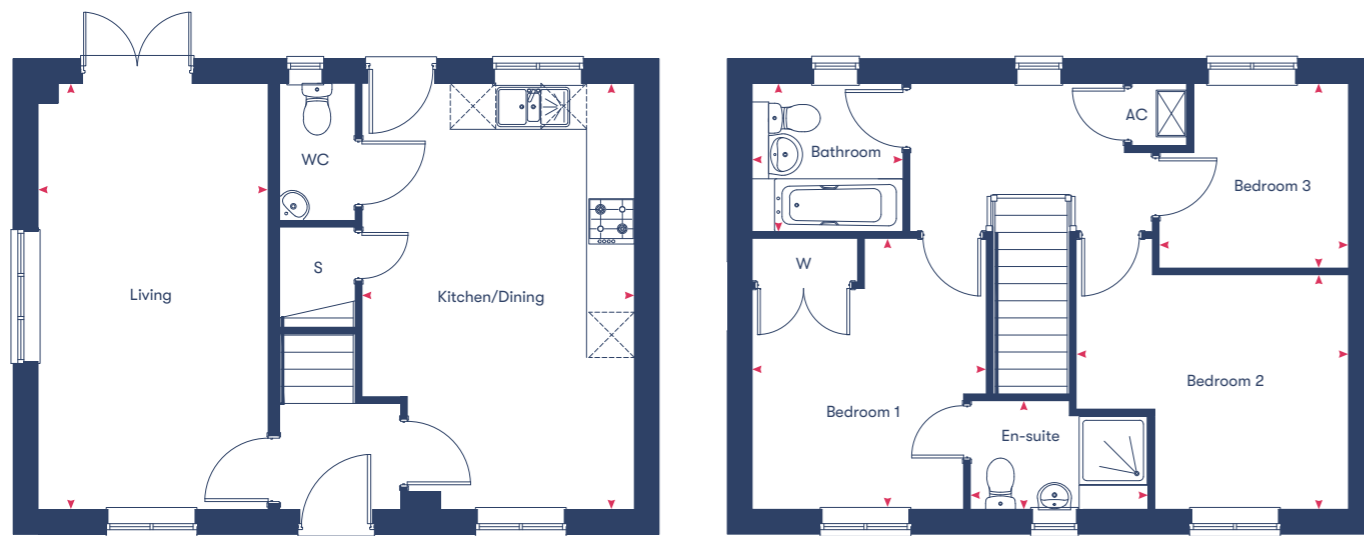
*Plots marked with an asterisk are mirrored versions of the floor plan shown.

Disclaimer: Room dimensions if shown are subject to change and are for guidance only. Whilst we endeavour to make our property details accurate and reliable these particulars are set out as a general outline only for the guidance of intended purchasers or lessees and do not constitute as a full or part offer or contract. Other details are given without responsibility and intending purchasers or tenants should not rely on them as statements or representations of fact but must satisfy themselves by inspection or otherwise as to the correctness of them. The purchaser is advised to obtain verification from their Solicitor or Surveyor to their own satisfaction.

Mandarin

3 bedroom houses

Plots 526, 527*, 554, 555*, 604*, 607, 609*, 610, 613*, 621*



Ground Floor

First Floor

Kitchen/Dining	5.68m x 3.64m
Living	5.98m x 3.09m
Bedroom 1	3.62m x 2.83m
En-suite	1.47m x 2.37m
Bedroom 2	3.14m x 3.64m
Bedroom 3	2.48m x 2.91m
Bathroom	2m x 2.03m
90.2m²	

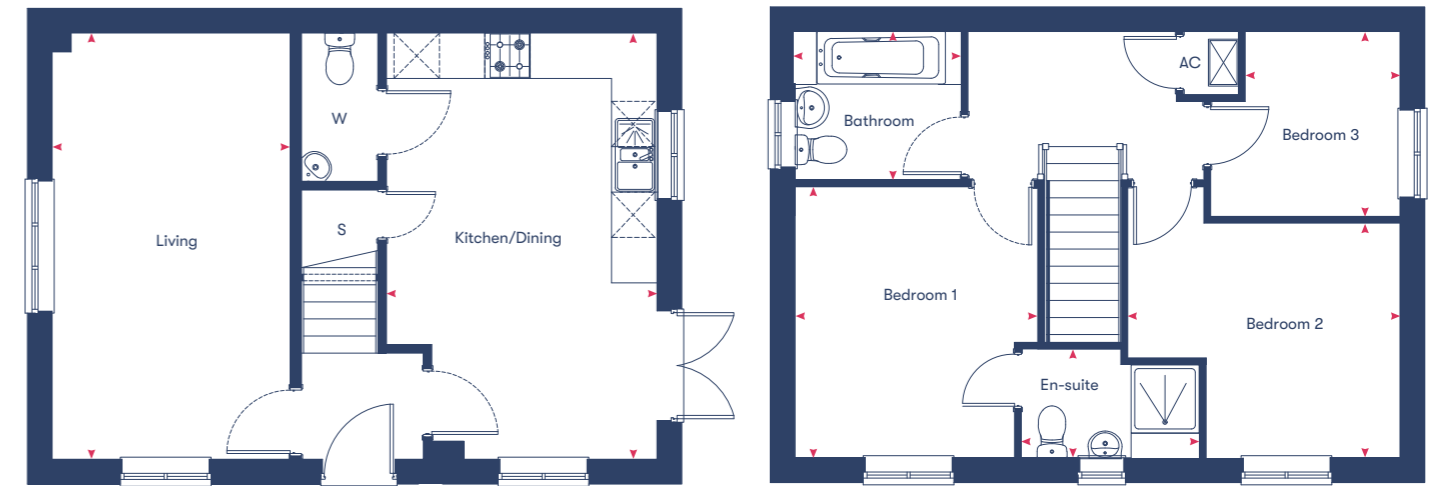
*Plots marked with an asterisk are mirrored versions of the floor plan shown.

Disclaimer: Room dimensions if shown are subject to change and are for guidance only. Whilst we endeavour to make our property details accurate and reliable these particulars are set out as a general outline only for the guidance of intended purchasers or lessees and do not constitute as a full or part offer or contract. Other details are given without responsibility and intending purchasers or tenants should not rely on them as statements or representations of fact but must satisfy themselves by inspection or otherwise as to the correctness of them. The purchaser is advised to obtain verification from their Solicitor or Surveyor to their own satisfaction.

Turnstone

3 bedroom houses

Plots 505, 528*, 533, 539* 543, 564, 570*, 578, 584, 585*, 589* 592, 593*, 599, 601, 612 ,620*



Ground Floor

First Floor

Kitchen/Dining	5.68m x 3.62m
Living	5.68m x 3.19m
Bedroom 1	2.94m x 3.62m
En-suite	1.47m x 2.24m
Bedroom 2	3.14m x 3.63m
Bedroom 3	2.48m x 2.08m
Bathroom	2m x 2.21m
91.1m²	

*Plots marked with an asterisk are mirrored versions of the floor plan shown.

Disclaimer: Room dimensions if shown are subject to change and are for guidance only. Whilst we endeavour to make our property details accurate and reliable these particulars are set out as a general outline only for the guidance of intended purchasers or lessees and do not constitute as a full or part offer or contract. Other details are given without responsibility and intending purchasers or tenants should not rely on them as statements or representations of fact but must satisfy themselves by inspection or otherwise as to the correctness of them. The purchaser is advised to obtain verification from their Solicitor or Surveyor to their own satisfaction.

Kittiwake

3 bedroom houses

Plots 573, 574*, 587, 588*



Ground Floor

First Floor

Kitchen	3.08m x 4.63m
Living/Dining	4.14m x 4.63m
Bedroom 1	3.36m x 2.82m
En-suite	1.74m x 2.47m
Bedroom 2	3.19m x 2.48m
Bedroom 3	3.19m x 2.08m
Bathroom	2.72m x 1.73m

86.8m²

*Plots marked with an asterisk are mirrored versions of the floor plan shown.

Disclaimer: Room dimensions if shown are subject to change and are for guidance only. Whilst we endeavour to make our property details accurate and reliable these particulars are set out as a general outline only for the guidance of intended purchasers or lessees and do not constitute as a full or part offer or contract. Other details are given without responsibility and intending purchasers or tenants should not rely on them as statements or representations of fact but must satisfy themselves by inspection or otherwise as to the correctness of them. The purchaser is advised to obtain verification from their Solicitor or Surveyor to their own satisfaction.

Lapwing

4 bedroom houses

Plots 501, 508*, 509, 510*, 579



Ground Floor

First Floor

Kitchen/Dining	6.06m x 3.04m
Living	3.45m x 5.02m
Bathroom	2.41m x 2.11m
Bedroom 1	3.73m x 2.98m
En-suite	3.01m x 2.36m
Bedroom 2	3.47m x 3.35m
Bedroom 3	4.75m x 2.68m
Bedroom 4	3.11m x 2.56m

114.2m²

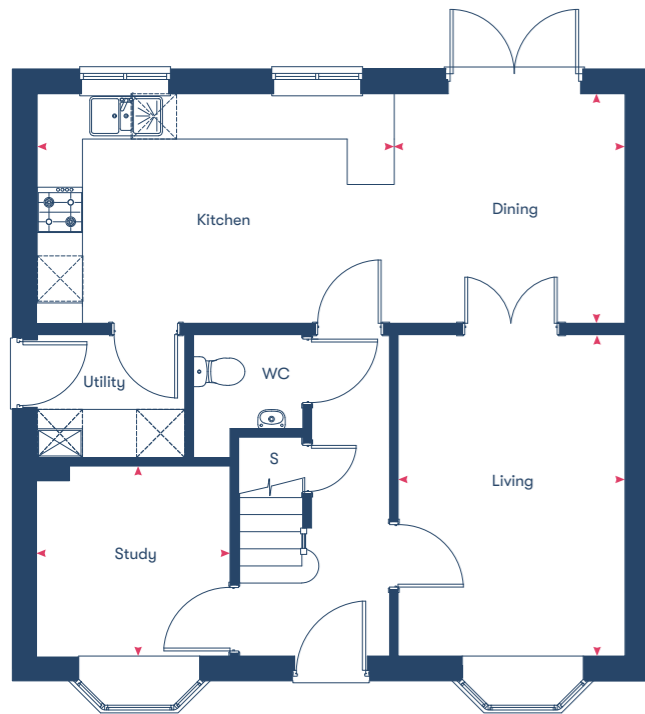
*Plots marked with an asterisk are mirrored versions of the floor plan shown.

Disclaimer: Room dimensions if shown are subject to change and are for guidance only. Whilst we endeavour to make our property details accurate and reliable these particulars are set out as a general outline only for the guidance of intended purchasers or lessees and do not constitute as a full or part offer or contract. Other details are given without responsibility and intending purchasers or tenants should not rely on them as statements or representations of fact but must satisfy themselves by inspection or otherwise as to the correctness of them. The purchaser is advised to obtain verification from their Solicitor or Surveyor to their own satisfaction.

Sandpiper

4 bedroom houses

Plots 511*, 512, 516*, 529, 542, 623



Ground Floor



First Floor

Kitchen/Dining	7.81m x 3.08m
Study	3.59m x 1.61m
Living Room	4.30m x 3.05m
Bedroom 1	3.71m x 5.16m
En-suite	1.89m x 2.60m
Bedroom 2	3.70m x 2.74m
Bedroom 3	2.70m x 2.72m
Bedroom 4	3.58m x 2.22m
Bathroom	2.76m x 1.75m
117.1m²	

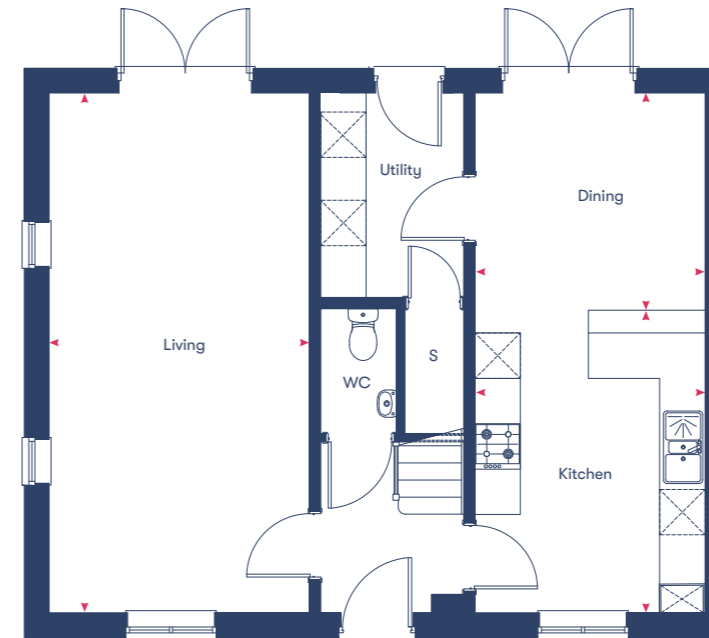
*Plots marked with an asterisk are mirrored versions of the floor plan shown.

Disclaimer: Room dimensions if shown are subject to change and are for guidance only. Whilst we endeavour to make our property details accurate and reliable these particulars are set out as a general outline only for the guidance of intended purchasers or lessees and do not constitute as a full or part offer or contract. Other details are given without responsibility and intending purchasers or tenants should not rely on them as statements or representations of fact but must satisfy themselves by inspection or otherwise as to the correctness of them. The purchaser is advised to obtain verification from their Solicitor or Surveyor to their own satisfaction.

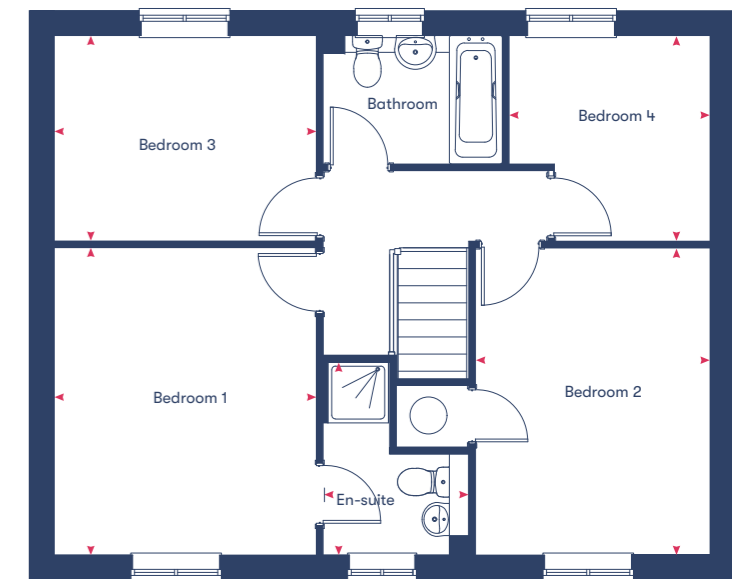
Moorhen

4 bedroom houses

Plots 504, 582*, 586*



Ground Floor



First Floor

Kitchen/ Dining	6.92m x 3.09m
Living Room	6.92m x 3.49m
Bedroom 1	4.10m x 3.50m
En-suite	2.58m x 1.95m
Bedroom 2	4.10m x 3.14m
Bedroom 3	2.75m x 3.50m
Bedroom 4	2.75m x 2.69m
Bathroom	1.73m x 2.39m
120.7m²	

*Plots marked with an asterisk are mirrored versions of the floor plan shown.

Disclaimer: Room dimensions if shown are subject to change and are for guidance only. Whilst we endeavour to make our property details accurate and reliable these particulars are set out as a general outline only for the guidance of intended purchasers or lessees and do not constitute as a full or part offer or contract. Other details are given without responsibility and intending purchasers or tenants should not rely on them as statements or representations of fact but must satisfy themselves by inspection or otherwise as to the correctness of them. The purchaser is advised to obtain verification from their Solicitor or Surveyor to their own satisfaction.

Heron

4 bedroom houses

Plots 514*, 515*, 560*, 581*, 583*



Kitchen/Dining/Family Room	4.05m x 7.28m
Living	5.47m x 3.80m
Bedroom 1	3.31m x 3.70m
En-suite	2.36m x 3.07m
Bedroom 2	3.01m x 3.70m
Bedroom 3	3.38m x 3.50m
Bedroom 4	2.69m x 2.94m
Bathroom	1.83m x 3.14m
133.4m²	

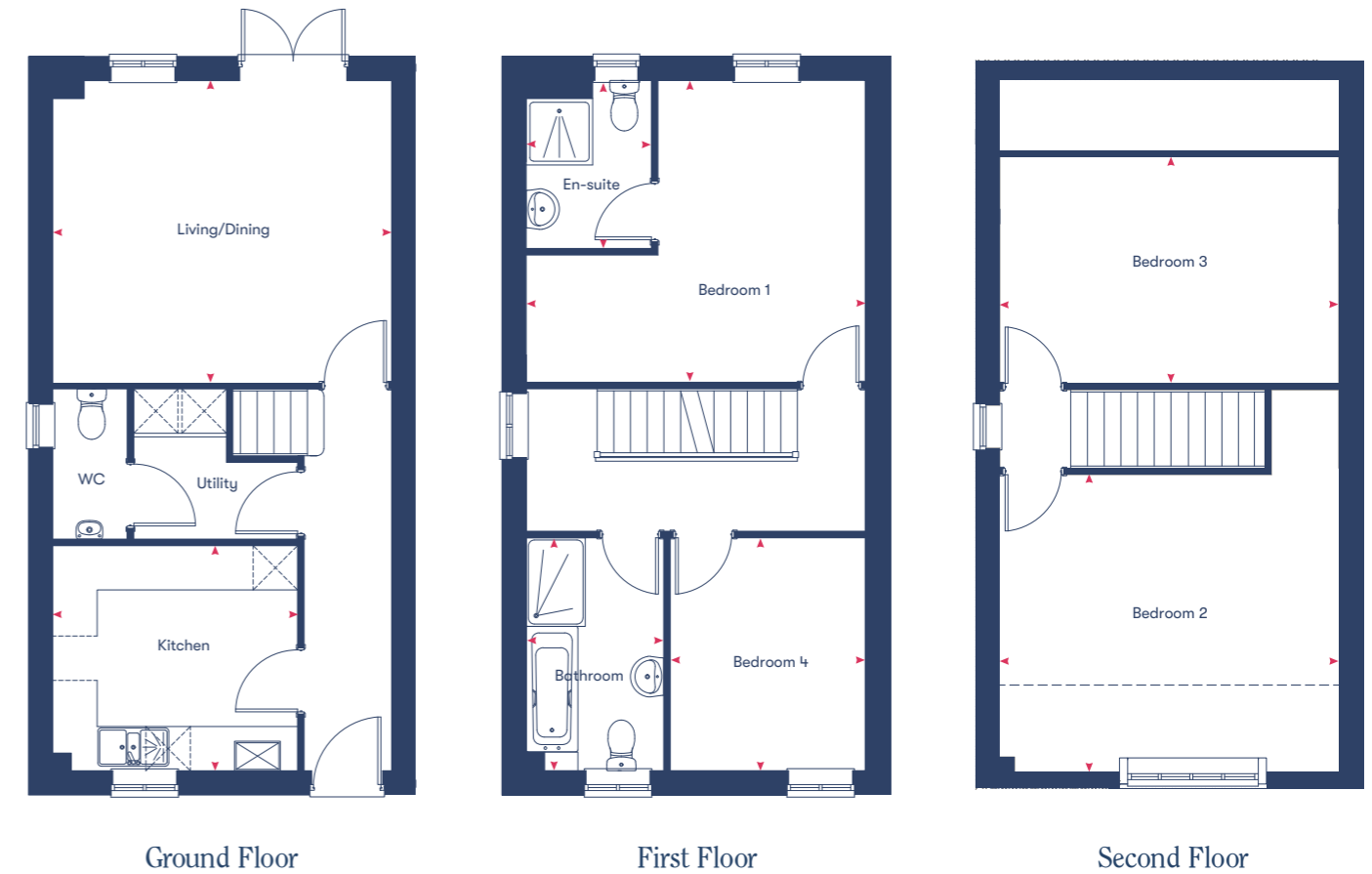
*Plots marked with an asterisk are mirrored versions of the floor plan shown.

Disclaimer: Room dimensions if shown are subject to change and are for guidance only. Whilst we endeavour to make our property details accurate and reliable these particulars are set out as a general outline only for the guidance of intended purchasers or lessees and do not constitute as a full or part offer or contract. Other details are given without responsibility and intending purchasers or tenants should not rely on them as statements or representations of fact but must satisfy themselves by inspection or otherwise as to the correctness of them. The purchaser is advised to obtain verification from their Solicitor or Surveyor to their own satisfaction.

Avocet

4 bedroom houses

Plots 627, 628*



Kitchen	3.08m x 3.35m
Living/Dining	4.12m x 4.63m
Bedroom 1	4.12m x 4.63m
En-suite	2.31m x 1.73m
Bedroom 2	5.20m x 4.58m
Bedroom 3	3.07m x 4.58m
Bedroom 4	3.19m x 2.67m
Bathroom	3.19m x 1.90m
118.5m²	

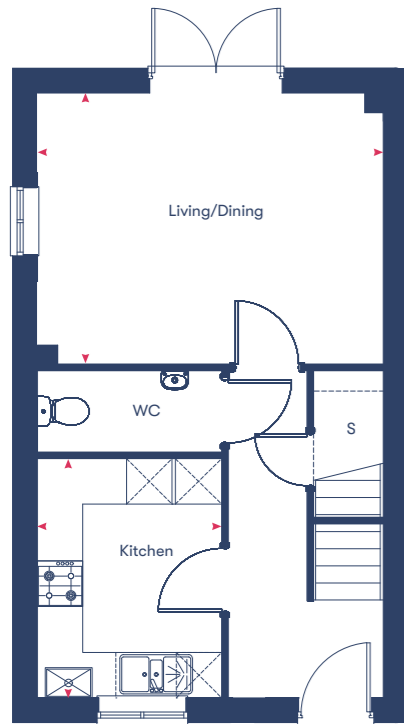
*Plots marked with an asterisk are mirrored versions of the floor plan shown.

Disclaimer: Room dimensions if shown are subject to change and are for guidance only. Whilst we endeavour to make our property details accurate and reliable these particulars are set out as a general outline only for the guidance of intended purchasers or lessees and do not constitute as a full or part offer or contract. Other details are given without responsibility and intending purchasers or tenants should not rely on them as statements or representations of fact but must satisfy themselves by inspection or otherwise as to the correctness of them. The purchaser is advised to obtain verification from their Solicitor or Surveyor to their own satisfaction.

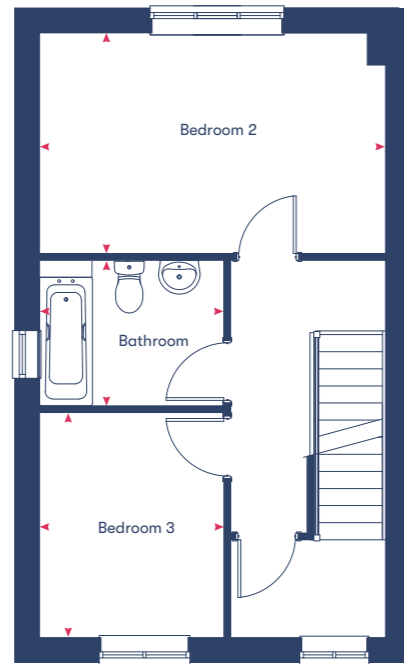
Knot

4 bedroom houses

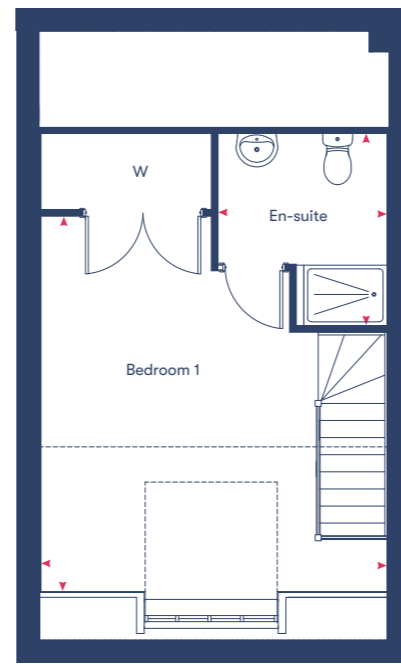
Plots 571, 572*, 576, 577*, 629, 630*



Ground Floor



First Floor



Second Floor

Kitchen	3.20m x 2.47m
Living/Dining	3.62m x 4.62m
Bedroom 1	6.09m x 4.62m
En-suite	2.57m x 2.27m
Bedroom 2	2.95m x 4.62m
Bedroom 3	3.75m x 2.47m
Bathroom	1.95m x 2.47m
92.3m²	

*Plots marked with an asterisk are mirrored versions of the floor plan shown.

Disclaimer: Room dimensions if shown are subject to change and are for guidance only. Whilst we endeavour to make our property details accurate and reliable these particulars are set out as a general outline only for the guidance of intended purchasers or lessees and do not constitute as a full or part offer or contract. Other details are given without responsibility and intending purchasers or tenants should not rely on them as statements or representations of fact but must satisfy themselves by inspection or otherwise as to the correctness of them. The purchaser is advised to obtain verification from their Solicitor or Surveyor to their own satisfaction.

Shared Ownership Specialists

Dedicated to finding you your next home or helping you take the first step onto the property ladder.

Welcome to Homemade Homes by Accent, the experienced property sales team within Accent Housing.

Accent Housing Limited provides over 20,000 homes in the North, South and East of the UK. We want to be with you for your journey. Whether that's helping you to take the first step onto the housing ladder or helping you search for a new home, we'll be right there with you.

We have Shared Ownership homes across the country, from Surrey to Yorkshire and have helped hundreds of people to fulfil their home ownership ambitions. We offer new and resale shared ownership homes, and also help our current customers to buy more of their home or sell it when they want to move on.

Visit our website dedicated to all things Shared Ownership
www.homemadehomes.com

A selection of developments from **homemade**
homes by accent



Brooklands,
Milton Keynes



Great Denham,
Bedfordshire



Willow Grove,
Wixams



homemade

homes by accent

All information supplied is correct when published (April 2024) and is not intended to form part of any contract or warranty. Computer-generated images are an artist's impression and features such as landscaping, windows, brick, and other materials may vary, as may heating and electrical layouts. Any furniture and landscaping are shown for illustrative purposes only. Floor plans are intended to give a general indication of the proposed floor layout. You should not use dimensions for carpet sizes, appliance spaces, or furniture items. Information regarding schools, transport, and amenities should be considered general guidance only; we make every effort to ensure this information is current; however, you should not rely solely on the information presented. Journey times are representative of journeys made by car unless stated otherwise and may vary according to travel conditions and time of day. Any site plan is drawn to show the relative position of individual properties, not to scale. This two-dimensional drawing will not show land contours, gradients, boundary treatments, landscaping, or local authority street lighting. Footpaths are subject to change. For a shared ownership home, you need to pay rent to us for the share you do not own. The monthly rent payment will be listed in each advert on our website. We will review your rent at times set out in your lease. Your rent is reviewed, usually once a year. Your rent will go up when it is reviewed. It will not go down. The monthly payment for service charges will be listed in each advert on our website and reviewed annually. We support the development of mixed-tenure communities and are proud to provide homes for Shared Ownership and affordable rent. The tenure of these homes may change subject to demand.

YOUR HOME MAY BE REPOSSESSED IF YOU DO NOT KEEP UP REPAYMENTS ON YOUR MORTGAGE OR RENT.

Homemade Homes by Accent is a brand used by Accent Housing Ltd, a Charitable Registered Society under the Co-operative and Community Benefit Societies Act 2014, registered no: 19229R. Authorised and regulated by the Financial Conduct Authority. Registered Office: 3rd Floor, Scorex House, 1 Bolton Road, Bradford, BD1 4AS

T 0345 678 0552

W [homemadehomes.com](https://www.homemadehomes.com)

E info@homemadehomes.com