



Apartment Living

at Bournleigh

Banbury, OX16 1UA



  #mysanctuaryhome

Sanctuary



➤ Discover Apartment Living at Bournleigh...

We are proud to present our brand-new collection of 2 bedroom apartments at Bournleigh, our stunning new development in Banbury, Oxfordshire.

Available to buy via flexible shared ownership, these modern properties are perfect for anyone looking to take the first step onto the property ladder or downsize to an apartment lifestyle. Each property is finished to a high quality standard and modern style, ready for you to add your own unique touches and make it a home. Bournleigh features a blend of new homes, including houses and apartments. For details on the full selection of properties that are available please speak to one of our Sales Advisors or visit our website.

Banbury has **something for everyone**, and Bournleigh is the **perfect location** for apartment living in this **popular town**.





➤ Ground floor plan

➤➤ **The Heron**
Plots 72

➤➤ **The Harrier**
Plot 73

➤➤ **The Kite**
Plot 74



► First floor plan

►► **The Heron**
Plots 75, 76

►► **The Harrier**
Plot 77

►► **The Kite**
Plot 78



► Second floor plan

►► **The Heron**
Plots 79, 80

►► **The Harrier**
Plot 81

►► **The Kite**
Plot 82





The Heron



Plots 72, 75, 76, 79, 80

Available on the ground, first or second floors, The Heron is a modern 2-bedroom apartment perfect for those looking to purchase their first home.

The apartment includes a spacious open-plan living/dining/kitchen area (with ground floor apartments also including two sets of doors out to the patio area and shared garden), two bedrooms, a family bathroom and ample storage space.

	Width (m) x Length (m)	Width (feet and inches) x Length (feet and inches)
Living / Kitchen / Dining	6.94 x 5.02	22'9" x 16'6"
Bedroom 1	4.87 x 2.97	16'0" x 9'9"
Bedroom 2	3.63 x 3.39	11'11" x 11'1"
Bathroom	2.1 x 2.3	6'11" x 7'7"
Total Area: 70.20sqm / 755.63sqft		



Images are purely for illustrative purposes and are not representative of specification. Sizes are based on maximum measurements and are for indication only. Any intending purchaser should satisfy themselves by inspection or otherwise as to their accuracy. Floorplans have been increased in size for legibility and are not to scale to all other plans within this brochure. Also some plots may be handed. Please consult the sales team for more information.

The Harrier



Plots 73, 77, 81

Available on the ground, first or second floors, The Harrier is perfect for downsizers or those looking to make their first step on the property ladder.

The apartment includes a spacious open-plan living/dining/kitchen area, two bedrooms, a family bathroom and ample storage space. The ground floor apartment also benefits from double-doors leading into the patio area and shared garden from the living room and both bedrooms.



	Width (m) x Length (m)	Width (feet and inches) x Length (feet and inches)
Living / Kitchen / Dining	3.95 x 6.2	13'0" x 20'4"
Bedroom 1	3.55 x 5.1	11'8" x 16'9"
Bedroom 2	3.14 x 3.98	10'4" x 13'0"
Bathroom	2.1 x 2.15	6'11" x 7'1"

Total Area: 70.60sqm / 759.93sqft

Images are purely for illustrative purposes and are not representative of specification. Sizes are based on maximum measurements and are for indication only. Any intending purchaser should satisfy themselves by inspection or otherwise as to their accuracy. Floorplans have been increased in size for legibility and are not to scale to all other plans within this brochure. Also some plots may be handed. Please consult the sales team for more information.

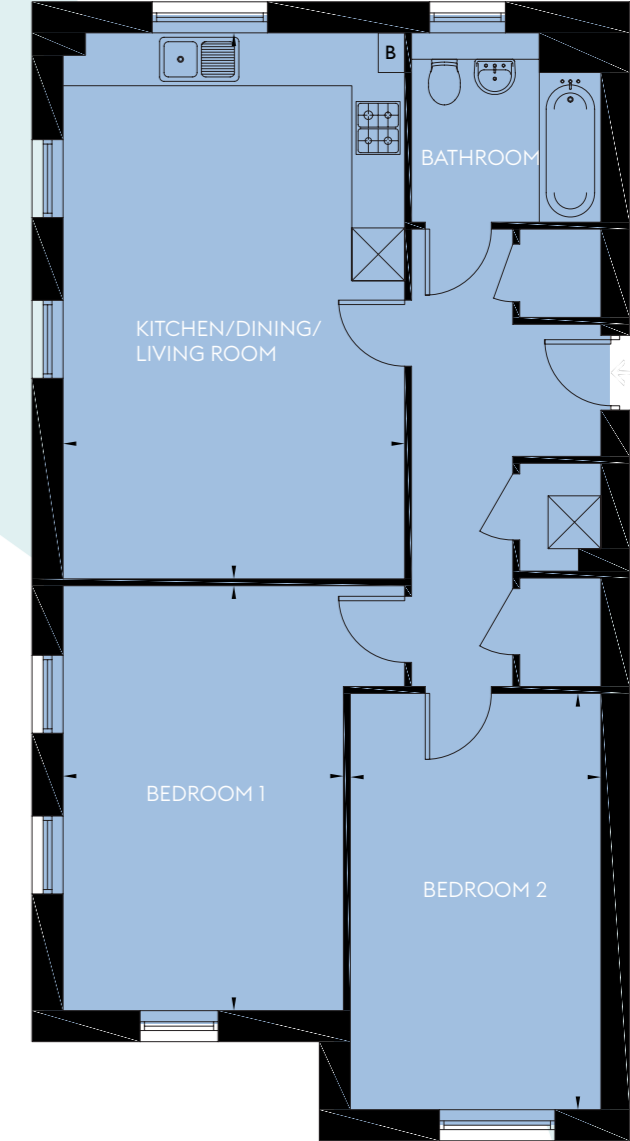
The Kite



Plots 74, 78, 82

Available on the ground, first or second floors, The Kite is a stylish 2 bedroom apartment perfect for first-time buyers or downsizers alike.

The apartment includes a spacious open-plan living/dining/kitchen area, a master bedroom (with the ground floor apartments also including access to the patio area and shared garden) plus an additional bedroom and a family bathroom.



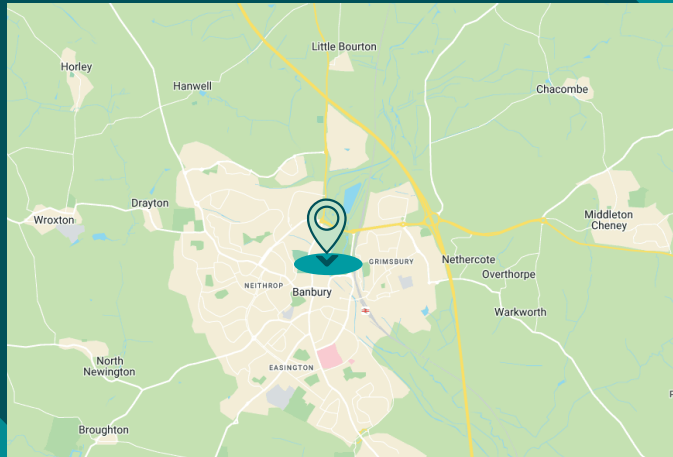
	Width (m) x Length (m)	Width (feet and inches) x Length (feet and inches)
Living / Kitchen / Dining	3.88 x 6.2	12'9" x 20'4"
Bedroom 1	3.88 x 4.82	12'9" x 15'10"
Bedroom 2	2.85 x 4.73	9'4" x 15'6"
Bathroom	2.15 x 2.15	7'1" x 7'1"

Total Area: 71.00sqm / 764.24sqft

Images are purely for illustrative purposes and are not representative of specification. Sizes are based on maximum measurements and are for indication only. Any intending purchaser should satisfy themselves by inspection or otherwise as to their accuracy. Floorplans have been increased in size for legibility and are not to scale to all other plans within this brochure. Also some plots may be handed. Please consult the sales team for more information.

To find out more please contact our sales agents on **07554 777 110**
bourleigh@sanctuary.co.uk

www.sanctuary-homes.co.uk



Sanctuary

Sanctuary House, Chamber Court, Castle Street, Worcester, Worcestershire, WR1 3ZQ
01905 334000 info@sanctuary-group.co.uk



Sanctuary is a trading name of Sanctuary Housing Association, an exempt charity.
Registered office: Sanctuary House, Chamber Court, Castle Street, Worcester, WR1 3ZQ
Registered as a provider of social housing with the Regulator of Social Housing No. L0247
Registered Society No. 19059R

The particulars within this brochure have been prepared for prospective purchasers for guidance only. They are not part of an offer or contract. Whilst some descriptions are inevitably subjective and information is given in good faith, they should not be relied upon as statements or representations of fact. All measurements are taken from plans and must therefore, be treated as approximate. Some variation in the finished construction and landscaping should be expected.

The site plan and photographs are for illustrative purposes only, not to scale and for general guidance only. Sanctuary reserves the right to amend the specifications without prior notice.

Buyers will be informed of any substantial changes to the specification after reservation. Any substitution of materials will be to an equal or higher standard.