



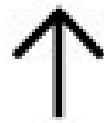
Computer generated image for illustration purposes only. Finishes and materials used may be subject to change.

Willowbrook Park

2 bedroom apartments

Willowbrook Park Site plan

North



 **Apartment block**
2 bedroom apartment

 **Parking spaces**

Site layout and landscaping is indicative only and subject to change.



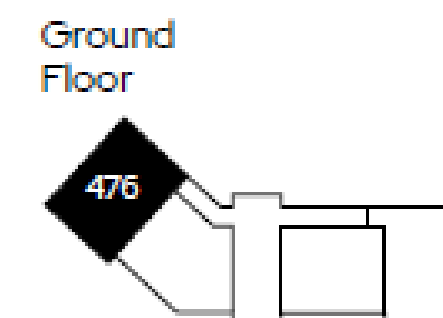
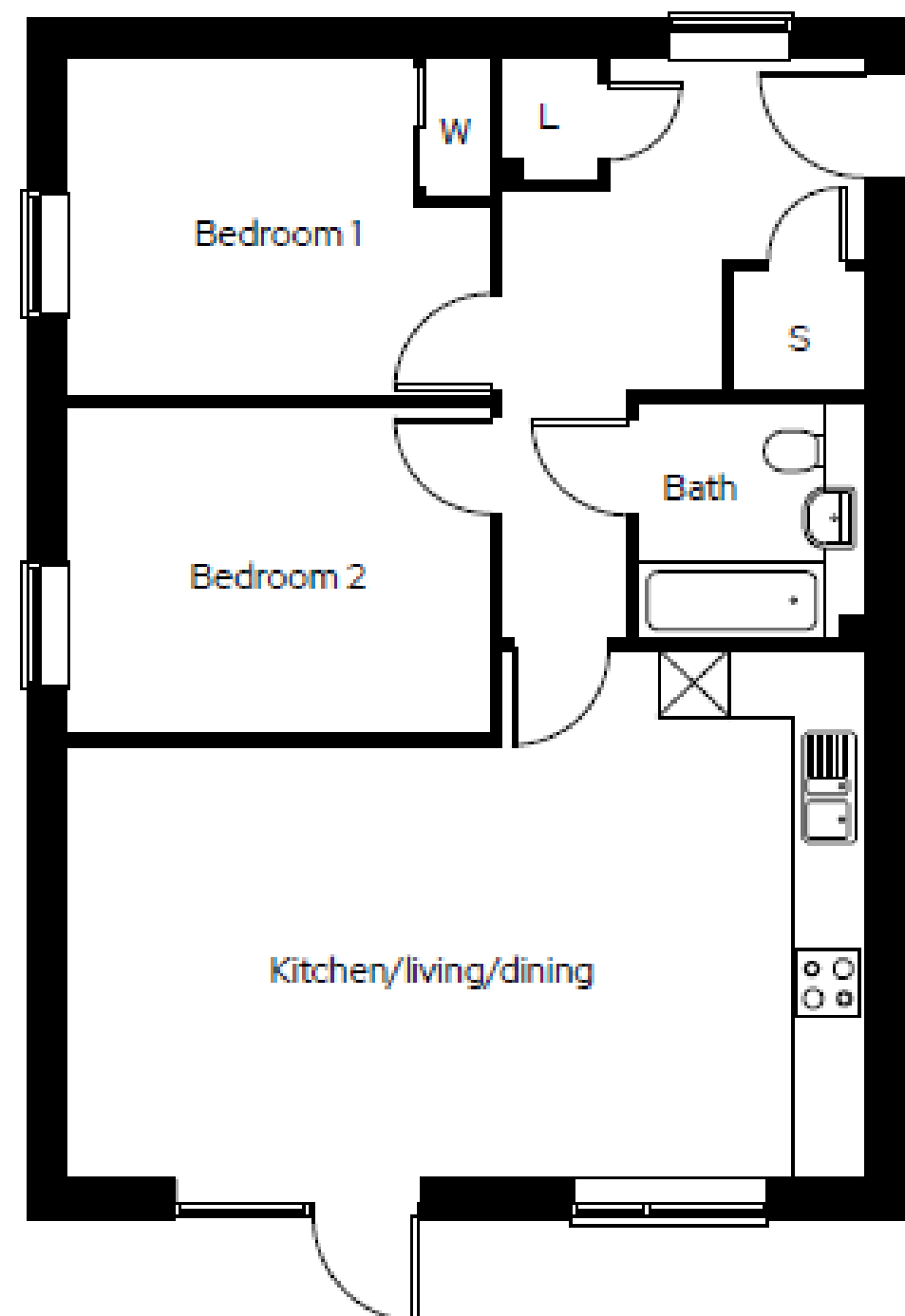
Willowbrook Park The Bradford

2 bedroom ground floor apartment
Plot 476

2  1  1 

Room	
Kitchen/living/dining	7.3m x 4.8m
Bedroom 1	3.9m x 3.1m
Bedroom 2	3.9m x 3.0m

L Laundry cupboard S Storage W Wardrobe



Dimensions provided are for general guidance and are not intended to be used for carpet sizes, appliances, spaces or items of furniture. All dimensions are maximum.

Willowbrook Park

The Culham

2 bedroom ground floor apartment
Plot 477

2  1  1 

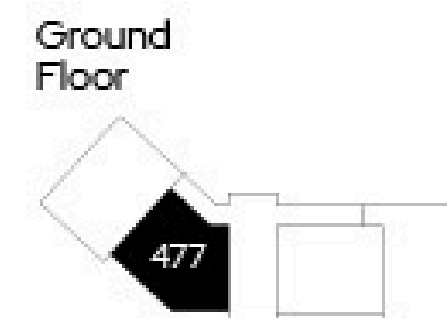


Room

Kitchen/living/dining	5.2m x 7.3m
Bedroom 1	3.1m x 3.4m
Bedroom 2	3.0m x 3.4m

L Laundry cupboard S Storage W Wardrobe

Dimensions provided are for general guidance and are not intended to be used for carpet sizes, appliances, spaces or items of furniture. All dimensions are maximum.



Willowbrook Park The Fraser

2 bedroom ground floor apartment
Plot 478

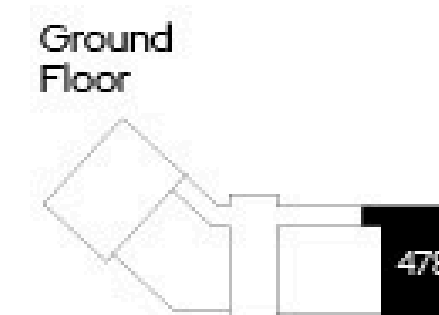
2  1  1 

Room

Kitchen/living/dining	7.3m x 4.6m
Bedroom 1	4.0m x 3.1m
Bedroom 2	4.0m x 3.0m



L Laundry cupboard S Storage W Wardrobe



Dimensions provided are for general guidance and are not intended to be used for carpet sizes, appliances, spaces or items of furniture. All dimensions are maximum.

Willowbrook Park The Bradford

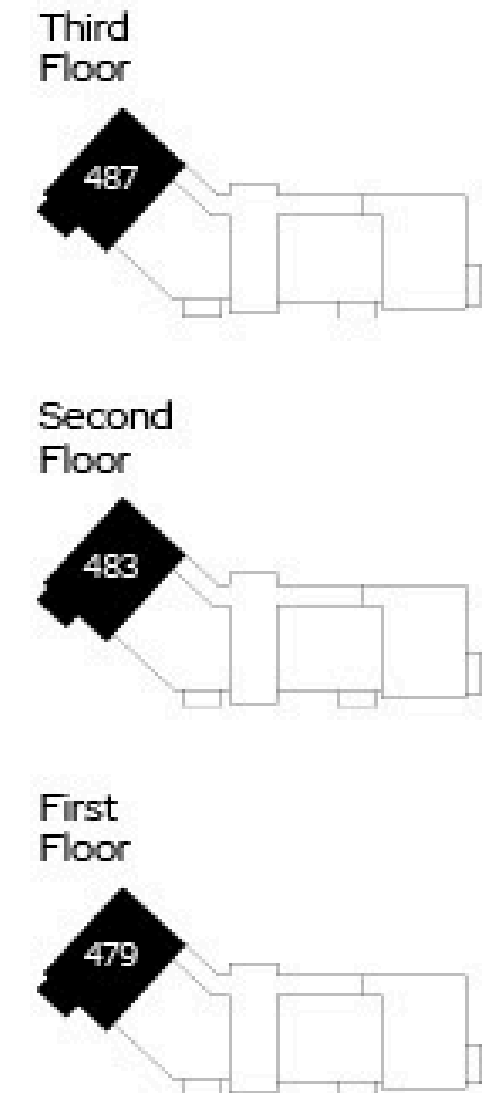
2 bedroom apartment with balcony
Plot 479, 483, 487

2 🏠 1 🚿 1 🚗

Room

Kitchen/living/dining	7.3m x 4.8m
Bedroom 1	3.9m x 3.1m
Bedroom 2	3.9m x 3.0m

L Laundry cupboard S Storage W Wardrobe



Dimensions provided are for general guidance and are not intended to be used for carpet sizes, appliances, spaces or items of furniture. All dimensions are maximum. Typical floor plan.

Willowbrook Park The Culham

2 bedroom apartment with balcony
Plot 480, 484, 488

2  1  1 



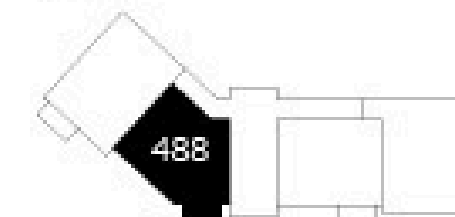
Room

Kitchen/living/dining	5.2m x 7.3m
Bedroom 1	3.1m x 3.4m
Bedroom 2	3.0m x 3.4m

L Laundry cupboard S Storage W Wardrobe

Dimensions provided are for general guidance and are not intended to be used for carpet sizes, appliances, spaces or items of furniture. All dimensions are maximum.

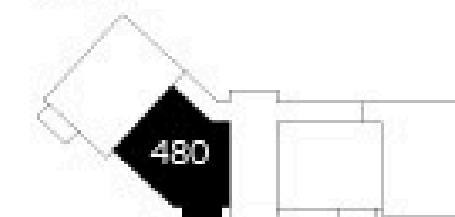
Third Floor



Second Floor



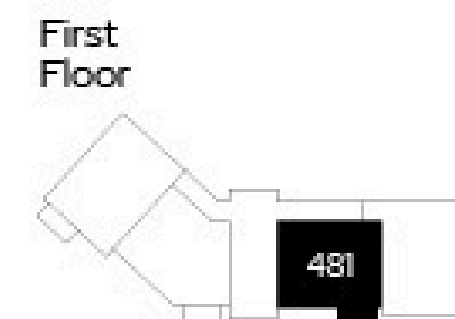
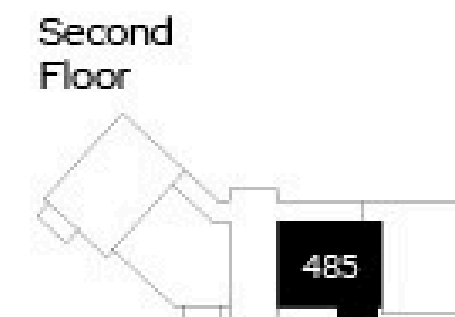
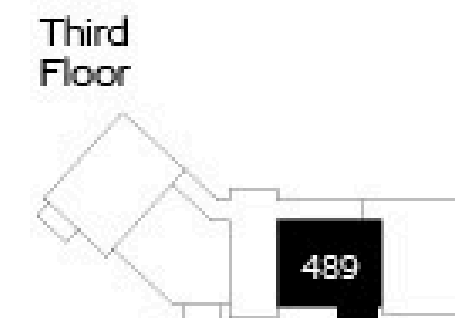
First Floor



Willowbrook Park The Harwell

2 bedroom apartment with balcony
Plot 481, 485, 489

2  1  1 



Room

Kitchen/living/dining	4.5m x 7.3m
Bedroom 1	3.1m x 3.9m
Bedroom 2	3.0m x 3.9m

L Laundry cupboard S Storage W Wardrobe

Dimensions provided are for general guidance and are not intended to be used for carpet sizes, appliances, spaces or items of furniture. All dimensions are maximum. Typical floor plan.

Willowbrook Park The Fraser

2 bedroom apartment with balcony
Plot 482, 486, 490

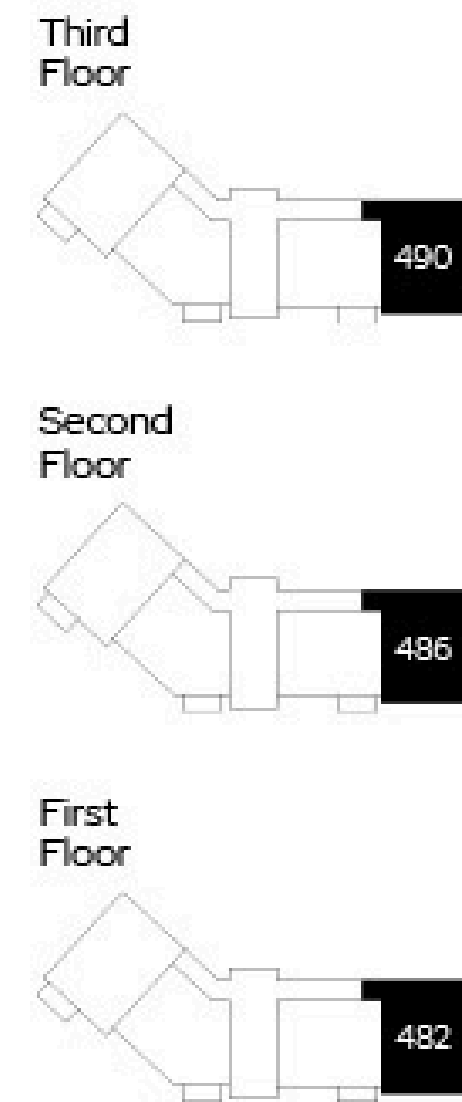
2  1  1 

Room

Kitchen/living/dining	7.3m x 4.6m
Bedroom 1	4.0m x 3.1m
Bedroom 2	4.0m x 3.0m



L Laundry cupboard S Storage W Wardrobe



Dimensions provided are for general guidance and are not intended to be used for carpet sizes, appliances, spaces or items of furniture. All dimensions are maximum. Typical floor plan.