

## THE FOLD

Calverley Lane, Horsforth, Leeds, West Yorkshire LS18 4DZ

---

2 bedroom houses with parking and private gardens for **Rent to Buy**

AVAILABLE TO RESERVE OFF PLAN



# THE FOLD

Calverley Lane, Horsforth, Leeds, West Yorkshire LS18 4DZ

---

Stonewater is pleased to present this collection of **two, three and four bedroom homes for rent to buy** at its new development off Calverley Lane in desirable Horsforth, five-and-a-half miles north west of Leeds City Centre.

Each of the homes features a contemporary interior specification including a modern fitted kitchen with integrated appliances and a clean, contemporary style family bathroom.

Outside there is off-road parking for two vehicles together with a pre-turfed rear garden.

The new homes are all gas-free, with environmentally sustainable air-source heat pumps being used for their heating. The site's green credentials extend to the outside as well.

Built on the former site of Leeds City College, Horsforth Campus, all are set amongst ample green space, which includes a nature area designed to protect and enhance the local ecology.

Horsforth has one of the most desirable postcodes in Yorkshire. Along the High Street are a range of popular pubs, restaurants and family-run stores, each with their own character and charm. Larger stores and high street brands can be found in nearby Leeds and Harrogate. For families, Horsforth offers a number of good schools, four of which are rated 'Outstanding' by Ofsted.

Lovers of the great outdoors are spoilt for choice by Horsforth's surrounding nature reserves, woodlands, parks and attractions. Horsforth Hall Park for example, on the outskirts of Horsforth, has a cricket pitch, bowling green, an adventure playground, a skate park and a Japanese formal garden. Nearby Kirkstall Abbey is one of the best-preserved Cistercian monasteries in England and is set in a public park on the north bank of the river Aire.

Hunger Hill Woods and Rodley Nature Reserve, both in the local area, also offer days out for all the family.

Transport links from Horsforth are convenient and reliable, with trains to Leeds City Centre from Horsforth station taking just 11 minutes, Harrogate 24 minutes and Leeds Bradford Airport less than 10 minutes. From Kirkstall Forge Station Leeds can be reached in six minutes and Bradford Forster Square in 15 minutes. Horsforth is well connected by bus services to nearby towns; its close proximity to several motorway networks including the M1 and M62 makes Horsforth a prime spot for easy commuting by car into Leeds and Bradford.

- Horsforth Hall Park 0.5 miles
- Hunger Hill Woods 1.1 miles
- Kirkstall Forge Railway Station 1.6 miles
- Horsforth Railway Station 1.7 miles
- Kirkstall Abbey 2.2 miles
- Rodley Nature Reserve 2.6 miles
- Leeds Bradford Airport 3.5 miles
- Leeds 5.5 miles
- Bradford 6.3 miles
- Harrogate 15.7 miles
- York 30.3 miles



# INTERIOR FLOOR PLANS

---



Ground floor

---



First floor

---

# SITE PLAN



# PLOT 78

8 Stone View, Horsforth, Leeds LS18 4RT



## 2 bedroom mid-terrace house

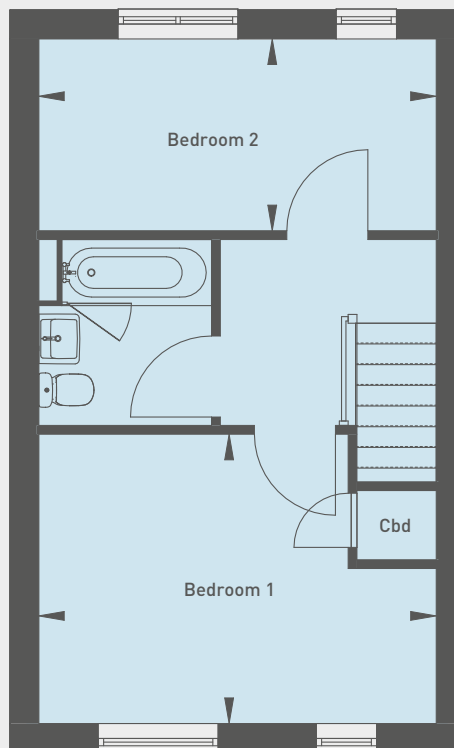
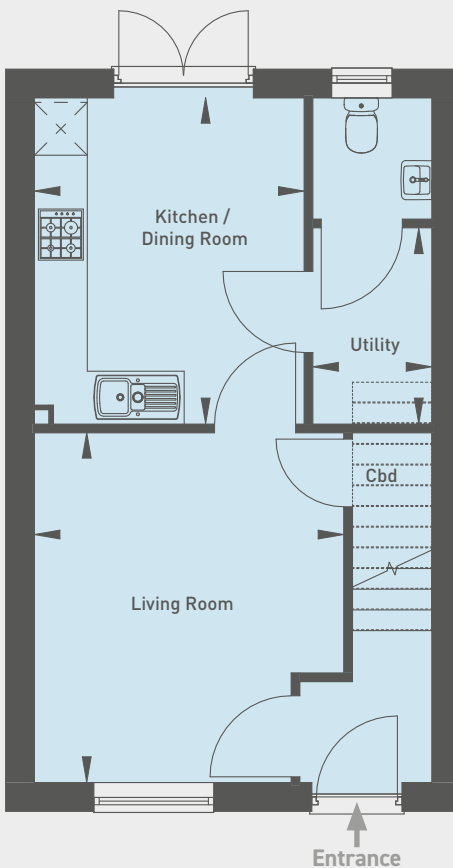
Off-road parking space  
Turfed rear garden  
Downstairs WC

Open Market Value: **£267,500**

Monthly Rent: **£807.57**  
inclusive of service charge

Ground floor

First floor



### Ground floor

Living Room  
3.97m x 3.51m (13'0" x 11'6")

Kitchen / Dining Room  
3.70m x 3.06m (12'2" x 10'0")

Utility Room  
2.22m x 1.35m (7'4" x 4'5")

### First floor

Bedroom 1  
4.51m x 3.28m (14'10" x 10'9")

Bedroom 2  
4.51m x 2.18m (14'10" x 7'2")

Please note that all sales particulars and images are for marketing and illustrative purposes only. Computer generated images are representative of the house type and not necessarily the specified plot as some details may vary. Plans may contain elements which are not present upon the final completion of the property. All room dimensions are approximate and are for general guidance only.

# PLOT 79

7 Stone View, Horsforth, Leeds LS18 4RT



## 2 bedroom end-of-terrace house

Off-road parking space  
Turfed rear garden  
Downstairs WC

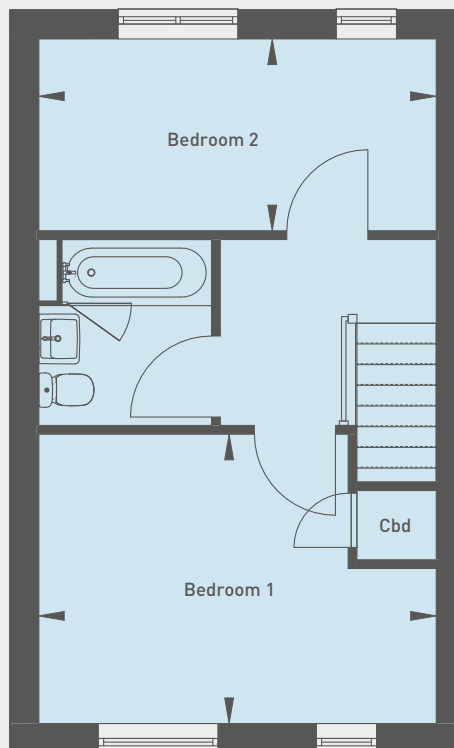
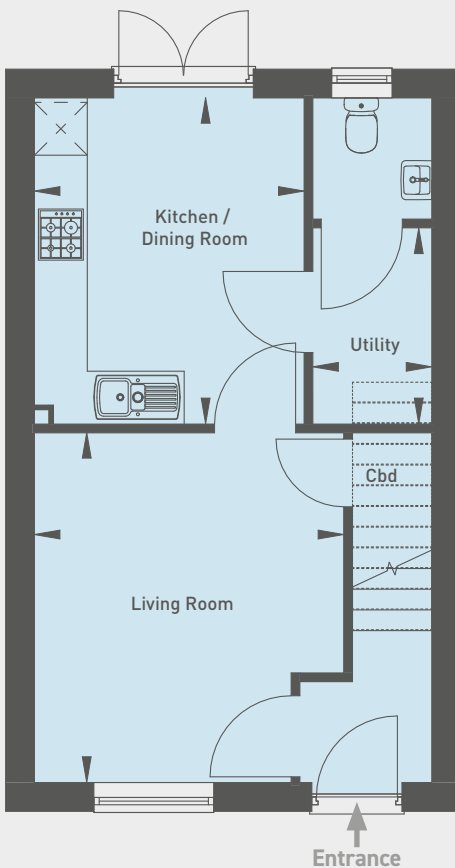
Open Market Value: **£270,000**

Monthly Rent: **£807.57**

inclusive of service charge

Ground floor

First floor



### Ground floor

Living Room  
3.97m x 3.51m (13'0" x 11'6")

Kitchen / Dining Room  
3.70m x 3.06m (12'2" x 10'0")

Utility Room  
2.22m x 1.35m (7'4" x 4'5")

### First floor

Bedroom 1  
4.51m x 3.28m (14'10" x 10'9")

Bedroom 2  
4.51m x 2.18m (14'10" x 7'2")

Please note that all sales particulars and images are for marketing and illustrative purposes only. Computer generated images are representative of the house type and not necessarily the specified plot as some details may vary. Plans may contain elements which are not present upon the final completion of the property. All room dimensions are approximate and are for general guidance only.

# PLOT 81

3 Stone View, Horsforth, Leeds LS18 4RT



## 2 bedroom semi-detached house

Off-road parking space  
Turfed rear garden  
Downstairs WC

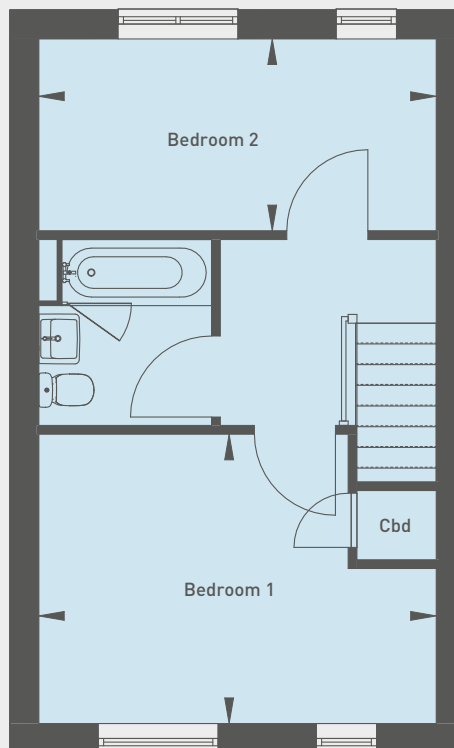
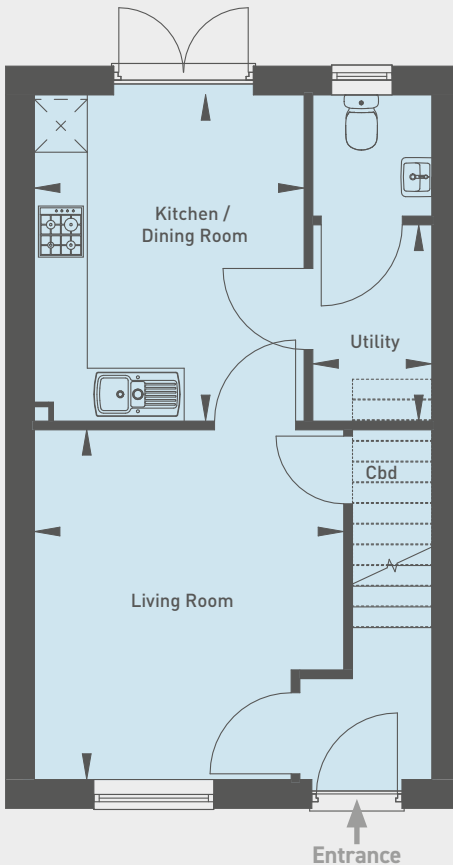
Open Market Value: **£270,000**

Monthly Rent: **£827.57**

inclusive of service charge

Ground floor

First floor



### Ground floor

Living Room  
3.97m x 3.51m (13'0" x 11'6")

Kitchen / Dining Room  
3.70m x 3.06m (12'2" x 10'0")

Utility Room  
2.22m x 1.35m (7'4" x 4'5")

### First floor

Bedroom 1  
4.51m x 3.28m (14'10" x 10'9")

Bedroom 2  
4.51m x 2.18m (14'10" x 7'2")

# PLOT 89

12 Kirk Drive, Horsforth, Leeds LS18 4WE



## 2 bedroom semi-detached house

Off-road parking space  
Turfed rear garden  
Downstairs WC

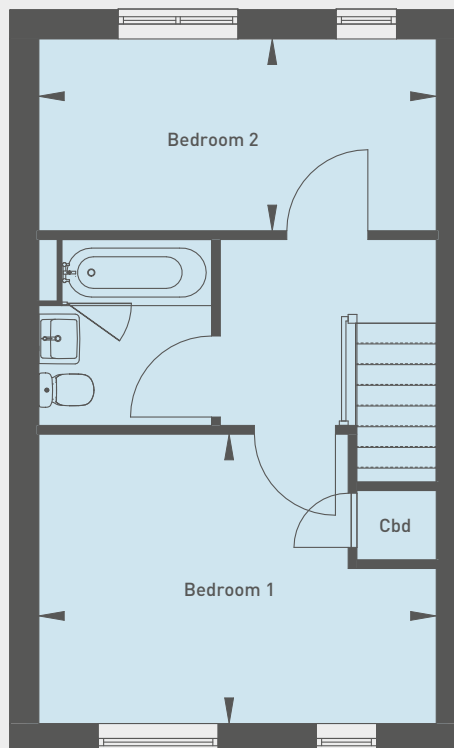
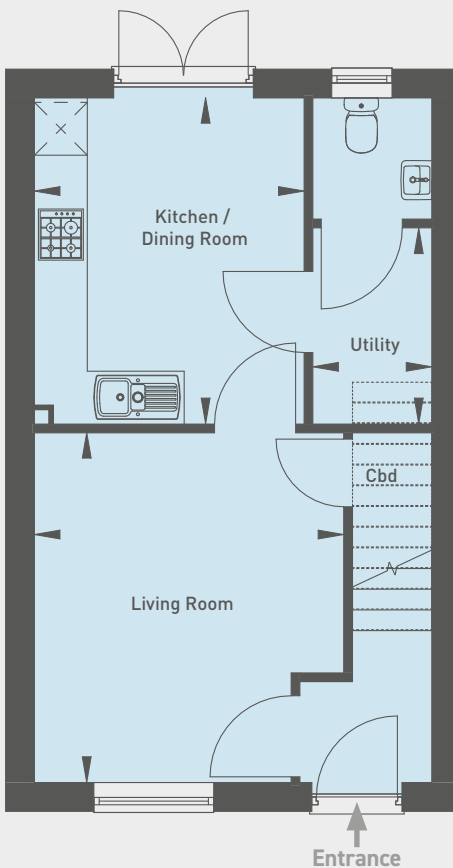
Open Market Value: **£270,000**

Monthly Rent: **£827.57**

inclusive of service charge

Ground floor

First floor



### Ground floor

Living Room  
3.97m x 3.51m (13'0" x 11'6")

Kitchen / Dining Room  
3.70m x 3.06m (12'2" x 10'0")

Utility Room  
2.22m x 1.35m (7'4" x 4'5")

### First floor

Bedroom 1  
4.51m x 3.28m (14'10" x 10'9")

Bedroom 2  
4.51m x 2.18m (14'10" x 7'2")

Please note that all sales particulars and images are for marketing and illustrative purposes only. Computer generated images are representative of the house type and not necessarily the specified plot as some details may vary. Plans may contain elements which are not present upon the final completion of the property. All room dimensions are approximate and are for general guidance only.



# PLOT 90

14 Kirk Drive, Horsforth, Leeds LS18 4WE



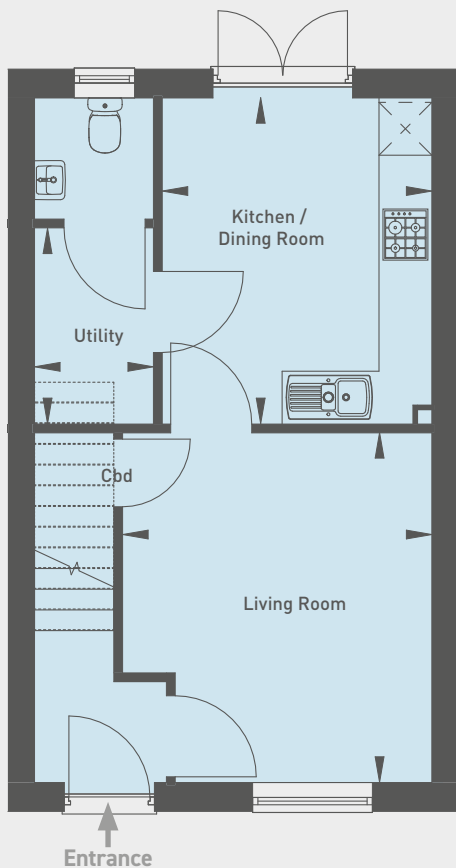
## 2 bedroom semi-detached house

Off-road parking space  
Turfed rear garden  
Downstairs WC

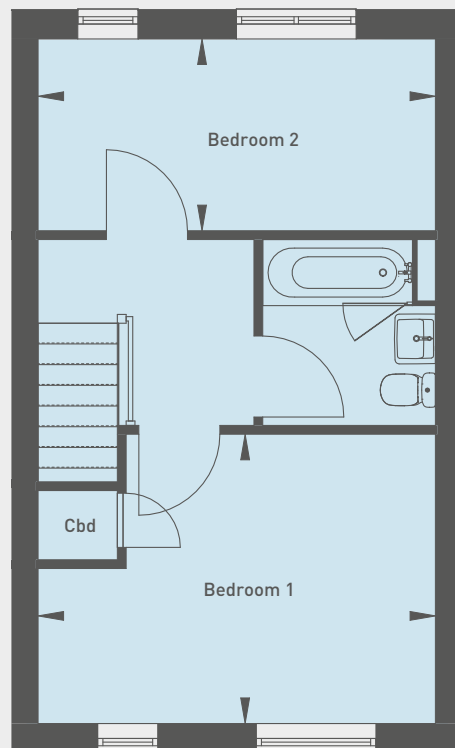
Open Market Value: **£270,000**

Monthly Rent: **£827.57**  
inclusive of service charge

Ground floor



First floor



### Ground floor

Living Room  
3.97m x 3.51m (13'0" x 11'6")

Kitchen / Dining Room  
3.70m x 3.06m (12'2" x 10'0")

Utility Room  
2.22m x 1.35m (7'4" x 4'5")

### First floor

Bedroom 1  
4.51m x 3.28m (14'10" x 10'9")

Bedroom 2  
4.51m x 2.18m (14'10" x 7'2")

Please note that all sales particulars and images are for marketing and illustrative purposes only. Computer generated images are representative of the house type and not necessarily the specified plot as some details may vary. Plans may contain elements which are not present upon the final completion of the property. All room dimensions are approximate and are for general guidance only.

# PLOT 93

29 Kirk Drive, Horsforth, Leeds LS18 4WE

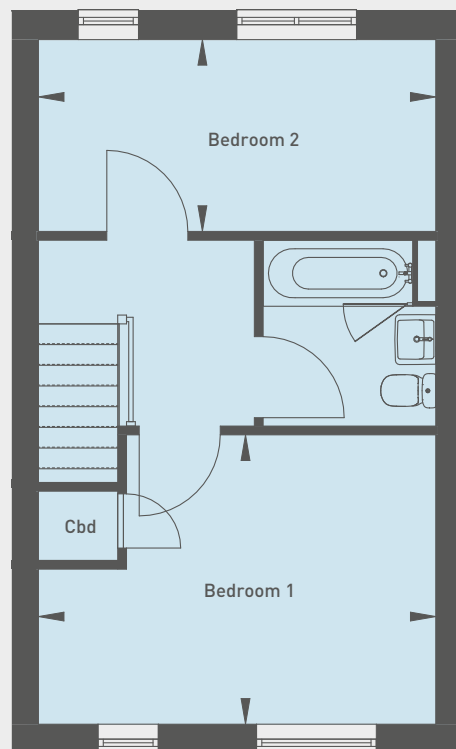
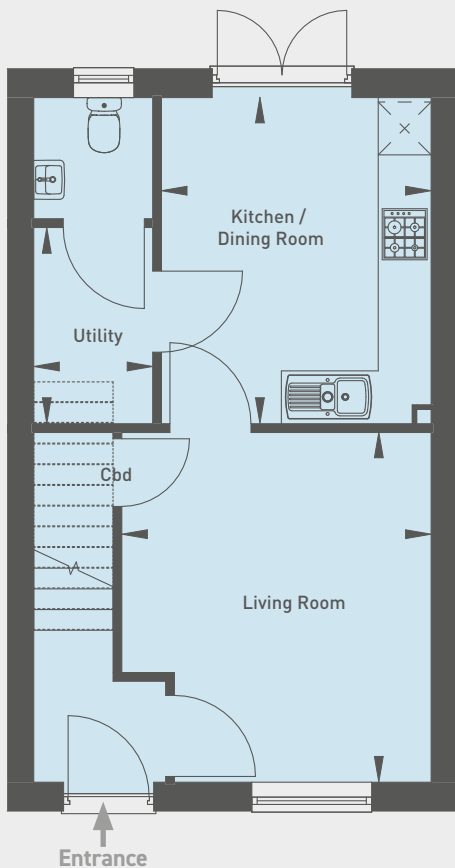


## 2 bedroom semi-detached house

Off-road parking space  
Turfed rear garden  
Downstairs WC

Open Market Value: **£270,000**

Monthly Rent: **£827.57**  
inclusive of service charge



### Ground floor

Living Room  
3.97m x 3.51m (13'0" x 11'6")  
Kitchen / Dining Room  
3.70m x 3.06m (12'2" x 10'0")  
Utility Room  
2.22m x 1.35m (7'4" x 4'5")

### First floor

Bedroom 1  
4.51m x 3.28m (14'10" x 10'9")  
Bedroom 2  
4.51m x 2.18m (14'10" x 7'2")

# PLOT 102

9 Trinity Hill, Horsforth, Leeds LS18 4UB



## 2 bedroom semi-detached house

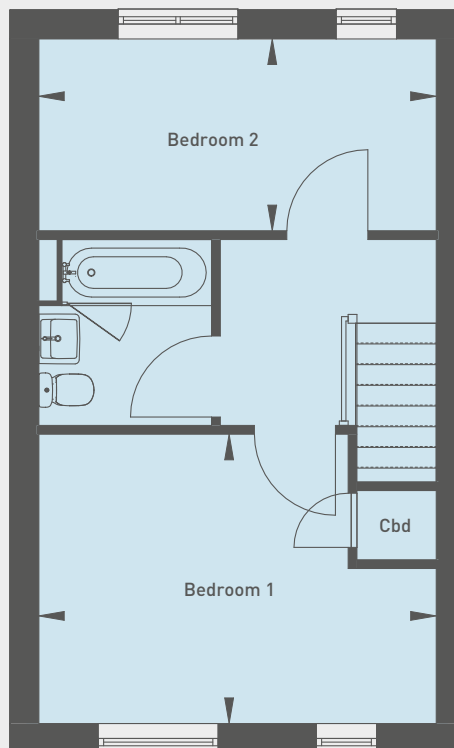
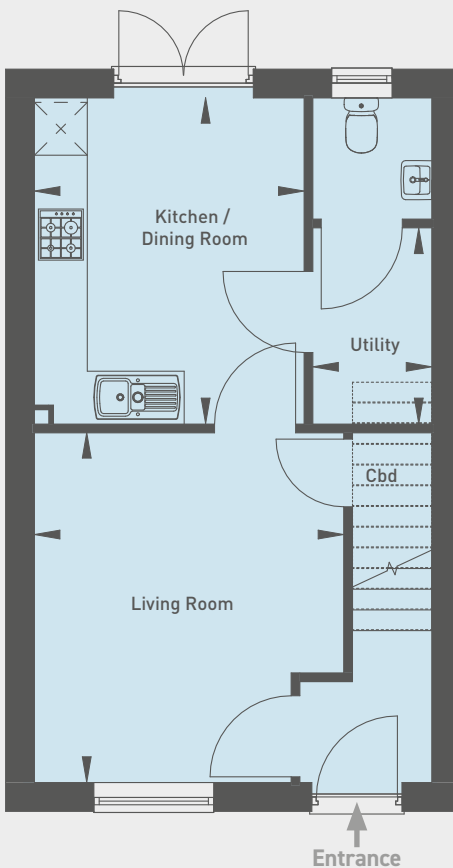
Off-road parking space  
Turfed rear garden  
Downstairs WC

Open Market Value: **£270,000**

Monthly Rent: **£827.57**  
inclusive of service charge

Ground floor

First floor



### Ground floor

Living Room  
3.97m x 3.51m (13'0" x 11'6")  
Kitchen / Dining Room  
3.70m x 3.06m (12'2" x 10'0")  
Utility Room  
2.22m x 1.35m (7'4" x 4'5")

### First floor

Bedroom 1  
4.51m x 3.28m (14'10" x 10'9")  
Bedroom 2  
4.51m x 2.18m (14'10" x 7'2")

Please note that all sales particulars and images are for marketing and illustrative purposes only. Computer generated images are representative of the house type and not necessarily the specified plot as some details may vary. Plans may contain elements which are not present upon the final completion of the property. All room dimensions are approximate and are for general guidance only.

# PLOT 148

34 Kirk Drive, Horsforth, Leeds LS18 4WE



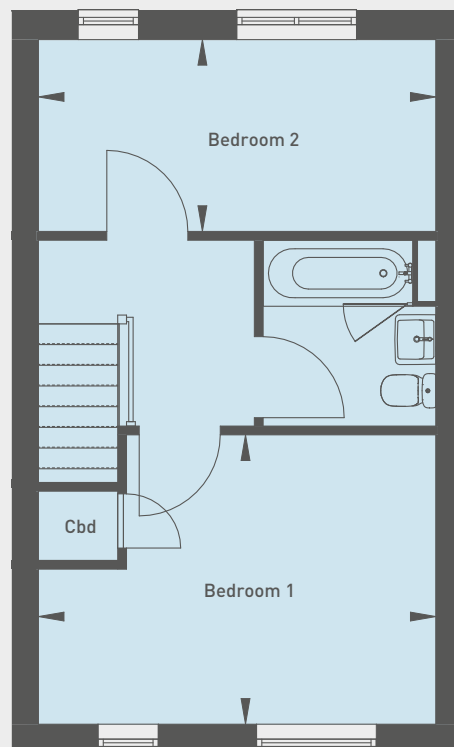
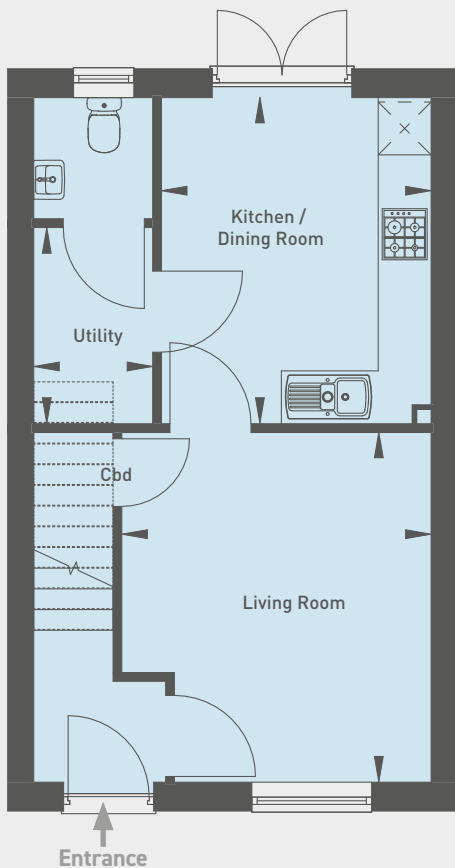
## 2 bedroom semi-detached house

Off-road parking space  
Turfed rear garden  
Downstairs WC

Open Market Value: **£270,000**

Monthly Rent: **£827.57**

inclusive of service charge



### Ground floor

Living Room  
3.97m x 3.51m (13'0" x 11'6")

Kitchen / Dining Room  
3.70m x 3.06m (12'2" x 10'0")

Utility Room  
2.22m x 1.35m (7'4" x 4'5")

### First floor

Bedroom 1  
4.51m x 3.28m (14'10" x 10'9")

Bedroom 2  
4.51m x 2.18m (14'10" x 7'2")

# THE FOLD

Calverley Lane, Horsforth, Leeds, West Yorkshire LS18 4DZ

---

Please note the most up-to-date availability can be found on our website [www.stonewaterhomes.co.uk](http://www.stonewaterhomes.co.uk).

**Rent to Buy** is a scheme which allows you to rent a home at 80% of the market rent, providing you with the opportunity to save towards a deposit to then go on and buy your own home. Our homes will be let on an Assured Shorthold Tenancy for 5 years giving you plenty of time to build up a deposit, after which Stonewater will provide you with an opportunity to buy 100% of the home you know and love.

FIND OUT ABOUT RENT TO BUY

Please note that all sales particulars and images are for marketing and illustrative purposes only. Plans, computer generated images and photos may contain elements which are not present upon the final completion of the property.

