



Persona Homes

by Home Group

Viridian Meadows

NORTHAMPTON

HELMSDALE

2-bedroom house

A great starter home that comes with more than you would expect.

The open plan living space opens out to the garden giving you many options when it comes to relaxing or entertaining. There are two double bedrooms and ample storage. With driveway parking and a turfed and fenced rear garden the Helmsdale has lots to offer.



Contact us:

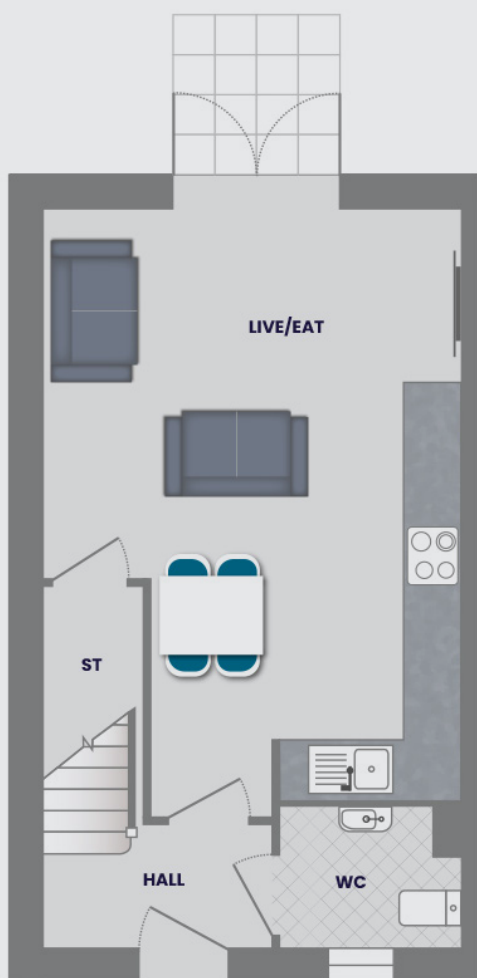
T: 0800 030 8888

E: contactus@yourpersonahome.com

W: yourpersonahome.com

Eyam Close, Desborough, NN14 2FF

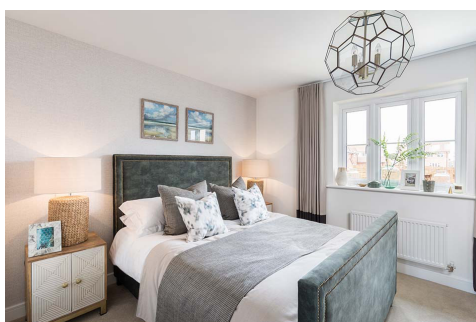
Kitchen/living/dining	6.27m x 4.47m
Bedroom 1	4.47m x 2.91m
Bedroom 2	4.47m x 2.90m
Total area	69m ²



Ground floor



First floor



Any floor plans are a general outline of the layout of the property for guidance only. All measurements are approximate and may vary and any intending purchasers should not rely on them as statements of fact or representations of fact but must satisfy themselves by inspection or otherwise as to their accuracy. Dimensions shown are not intended to be relied upon for installation of appliances or items of furniture or otherwise. CGI's and images are for illustrative purposes only. Specifications are subject to change. Images are indicative only and may be of previous developments.*Journey times and distances taken from google.com/ maps and are correct before going to print. All times and distances listed are approximate and may vary depending on time of travel.